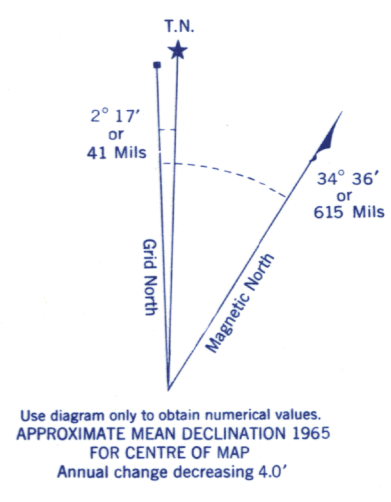
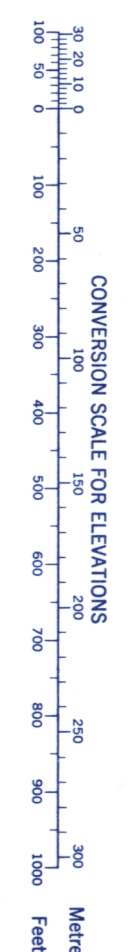
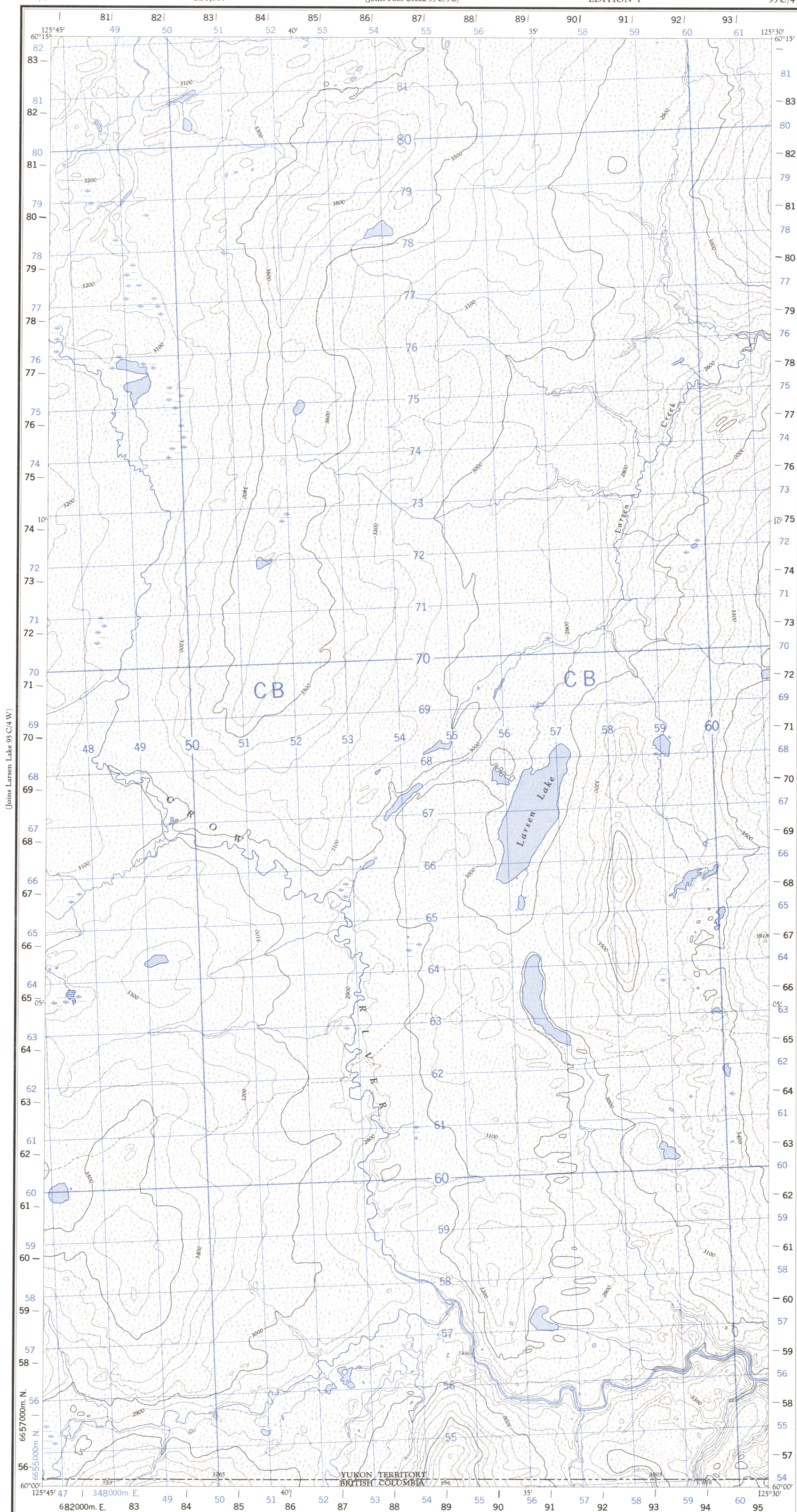


Refer to this map as: 95 C/4 E EDITION 1 ASE SERIES A 722



Grid zone identification table for 10V and CB, including easting and northing coordinates.

ONE THOUSAND METRE UNIVERSAL TRANSVERSE MERCATOR GRID ZONE 10

BLACK NUMBERED TICKS INDICATE THE 1000 METRE U.T.M. GRID ZONE 9

Compiled, 1963, by the SURVEYS AND MAPPING BRANCH, DEPARTMENT OF MINES AND TECHNICAL SURVEYS...

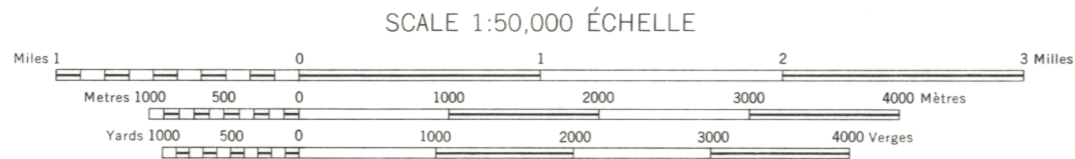
Copies may be obtained from the Map Distribution Office, Department of Mines and Technical Surveys, Ottawa.

LARSEN LAKE YUKON TERRITORY - BRITISH COLUMBIA

Rédigée en 1963, par la DIRECTION DES LEVÉS ET DE LA CARTOGRAPHIE, MINISTÈRE DES MINES ET DES RELEVÉS TECHNIQUES...

Ces cartes sont en vente au Bureau de distribution des cartes, ministère des Mines et des Relevés techniques, Ottawa.

- List of symbols for roads, trails, railways, power lines, and control points.



CONTOUR INTERVAL 100 FEET Elevations in Feet above Mean Sea Level North American Datum 1927

- List of symbols for buildings, schools, churches, lighthouses, rivers, streams, lakes, marshes, and depressions.