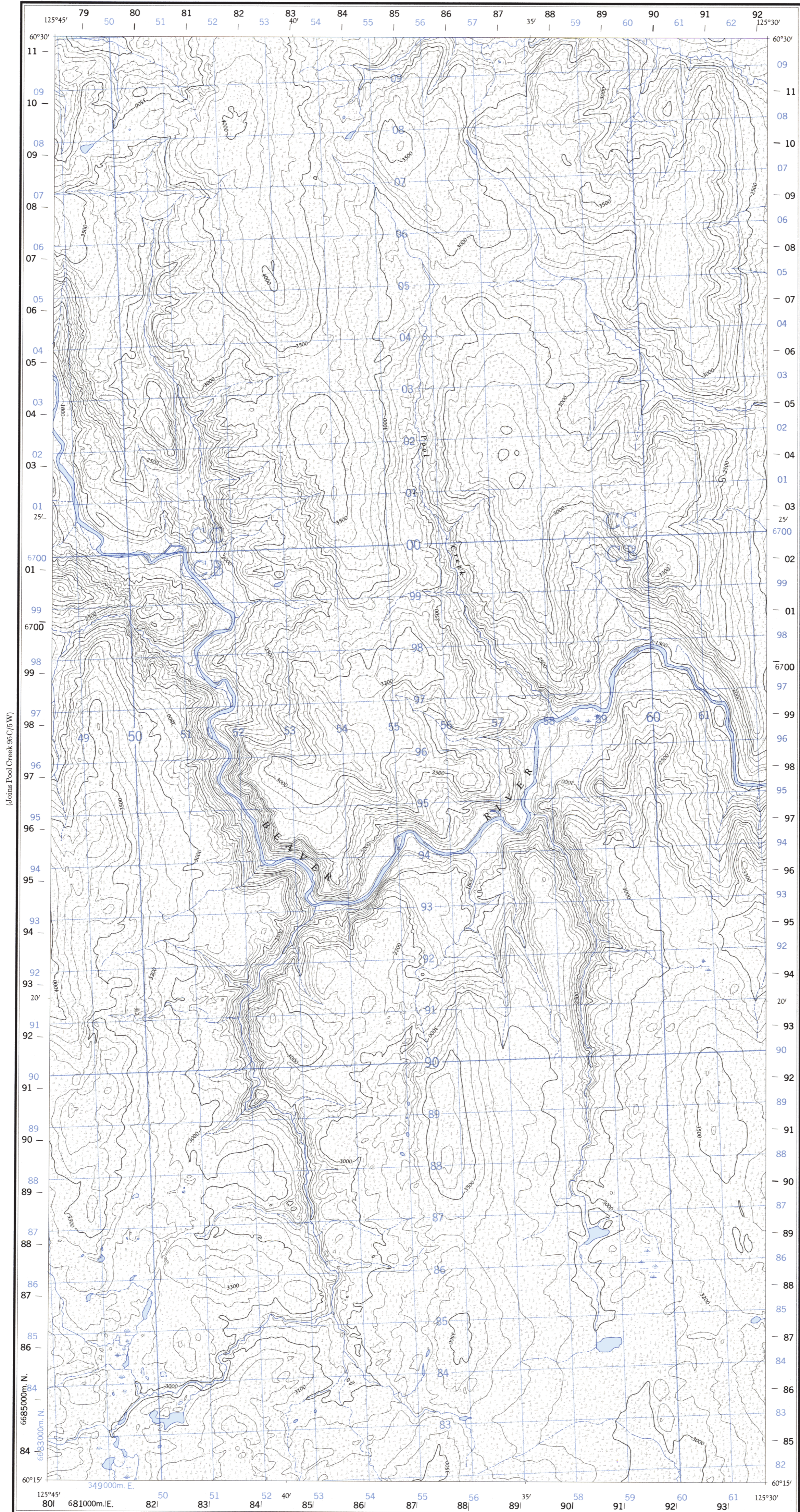
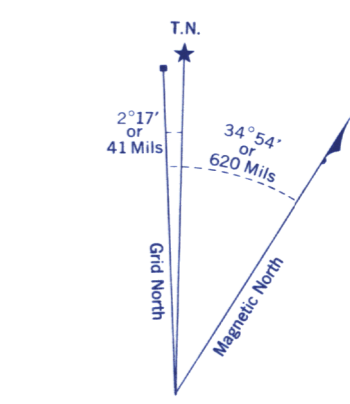
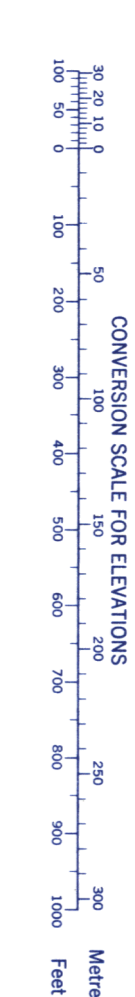


Refer to this map as: 95 C/5 E EDITION 1 ASE SERIES A 722



(Joins Pool Creek 95C/5 W)

(Joins Gold Peg Creek 95C/6 W)



Use diagram only to obtain numerical values. APPROXIMATE MEAN DECLINATION 1965 FOR CENTRE OF MAP. Annual change decreasing 4.0'

100,000 M. SQUARE IDENTIFICATION table showing grid zone designation 10V and square identification CC CB 67. Includes instructions for giving a reference to the nearest 100 metres and an example for a stream junction.

ONE THOUSAND METRE UNIVERSAL TRANSVERSE MERCATOR GRID ZONE 10

BLACK NUMBERED TICKS INDICATE THE 1000 METRE U.T.M. GRID ZONE 9

Compiled 1964, by the SURVEYS AND MAPPING BRANCH, DEPARTMENT OF MINES AND TECHNICAL SURVEYS, from aerial photographs taken in 1961. Field surveys 1960. Printed 1966.

Copies may be obtained from the Map Distribution Office, Department of Mines and Technical Surveys, Ottawa.

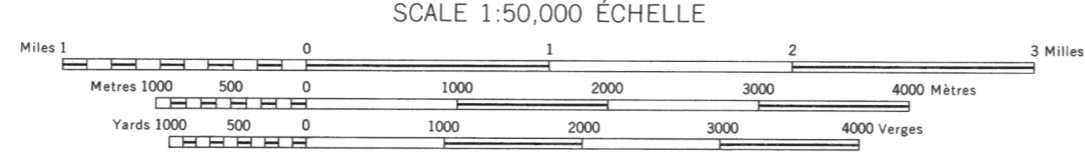
(Joins Larsen Lake 95C/4E)

POOL CREEK YUKON TERRITORY

Révisé en 1964, par la DIRECTION DES LEVÉS ET DE LA CARTOGRAPHIE, MINISTÈRE DES MINES ET DES RELEVÉS TECHNIQUES, d'après des photographies aériennes prises en 1961. Levés sur le terrain en 1960. Imprimé en 1966.

Ces cartes sont en vente au Bureau de distribution des cartes, ministère des Mines et des Relevés techniques, Ottawa.

- Legend for roads, routes, weather, cart tracks, railways, power transmission lines, mines, and bench marks.



CONTOUR INTERVAL 100 FEET Elevations in Feet above Mean Sea Level North American Datum 1927 Transverse Mercator Projection

- Legend for buildings, schools, churches, lighthouses, rivers, streams, lakes, marshes, and depression contours.