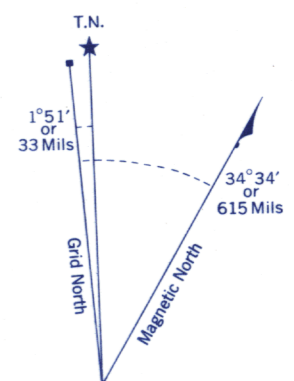
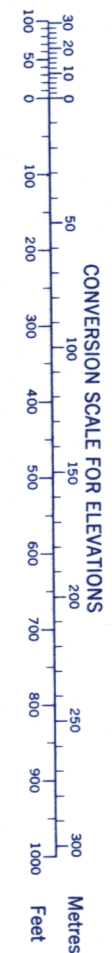
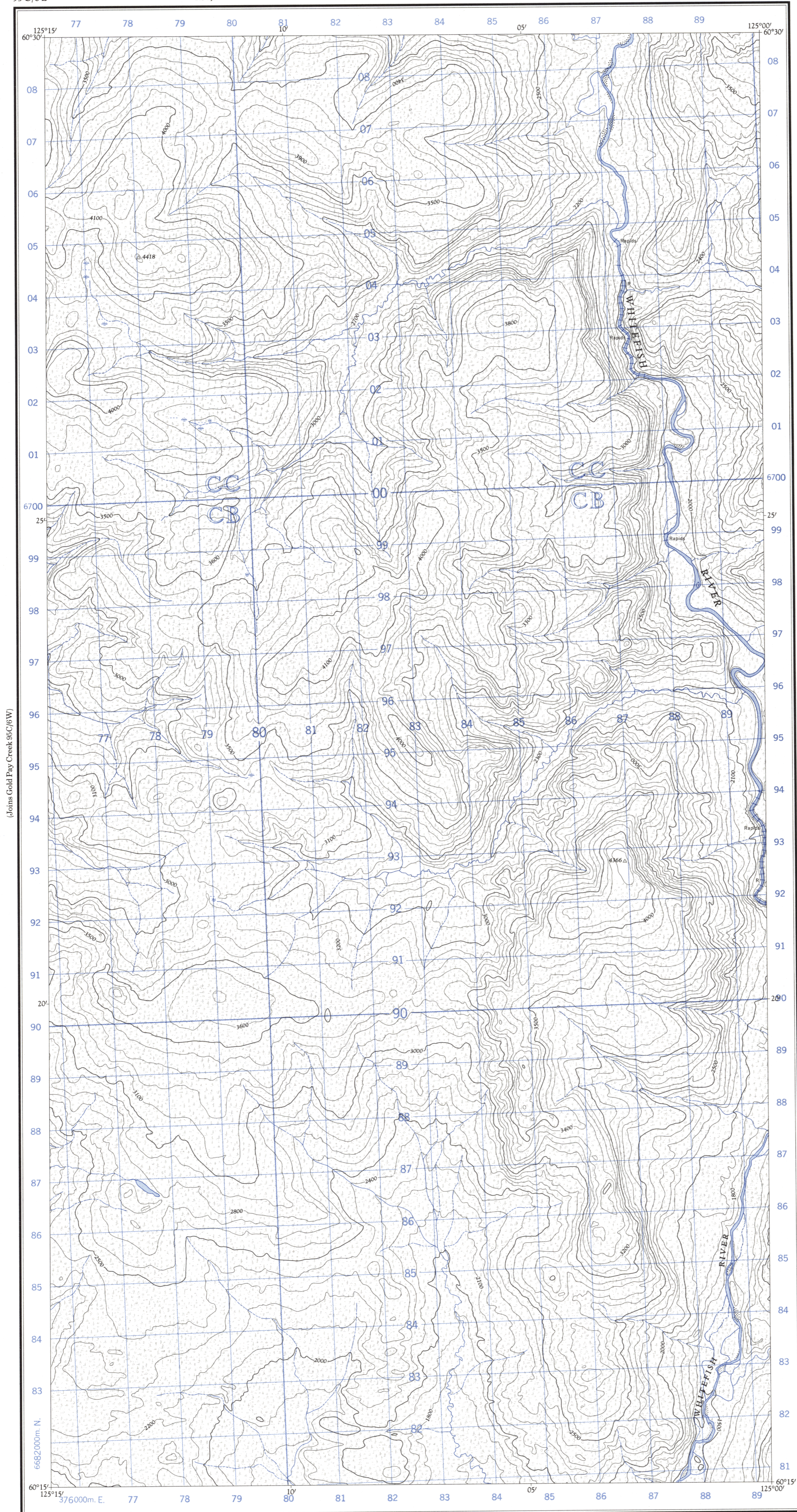


Refer to this map as: 95 C/6 E EDITION 1 ASE SERIES A 722



Use diagram only to obtain numerical values. APPROXIMATE MEAN DECLINATION 1965 FOR CENTRE OF MAP. Annual change decreasing 4.0'

Table with grid zone designation (10V) and 100,000 M. SQUARE IDENTIFICATION (CC, CB). Includes a table for giving a reference to nearest 100 metres with an example for a stream junction.

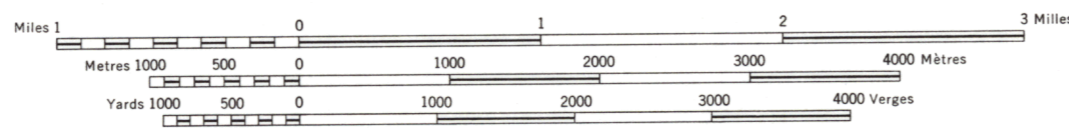
ONE THOUSAND METRE UNIVERSAL TRANSVERSE MERCATOR GRID ZONE 10

Compiled, 1964, by the SURVEYS AND MAPPING BRANCH, DEPARTMENT OF MINES AND TECHNICAL SURVEYS, from aerial photographs taken in 1961. Field surveys 1960. Printed 1966.

Copies may be obtained from the Map Distribution Office, Department of Mines and Technical Surveys, Ottawa.

GOLD PAY CREEK YUKON TERRITORY

SCALE 1:50,000 ÉCHELLE



CONTOUR INTERVAL 100 FEET Elevations in Feet above Mean Sea Level North American Datum 1927 Transverse Mercator Projection

Rédigée en 1964, par la DIRECTION DES LEVÉS ET DE LA CARTOGRAPHIE, MINISTÈRE DES MINES ET DES RELEVÉS TECHNIQUES, à partir des photographies aériennes prises en 1961. Levés sur le terrain en 1960. Imprimée en 1966.

Ces cartes sont en vente au Bureau de distribution des cartes, ministère des Mines et des Relevés techniques, Ottawa.

- Legend for roads, routes, and other features: all weather, dry weather, cart track, trail or portage, railway, power transmission line, mine, horizontal control point, bench mark.

- Legend for buildings, schools, churches, lighthouses, rivers, streams, lakes, marshes, and depressions.