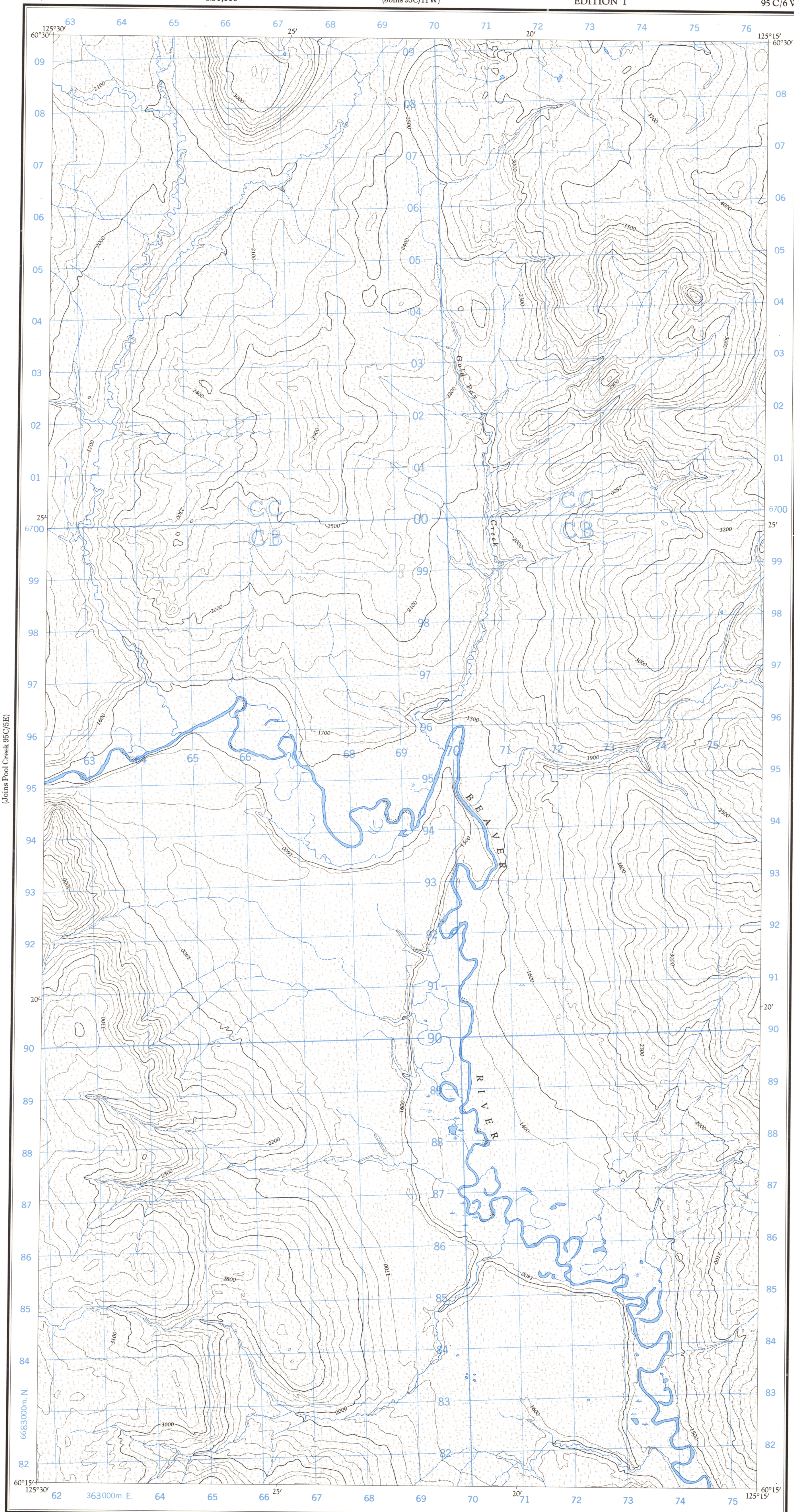
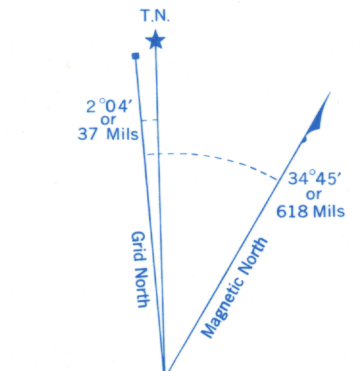


Refer to this map as: 95 C/6 W EDITION 1 ASE SERIES A 722



(Joins Pool Creek 95C/5E)

(Joins Gold Pay Creek 95C/8E)



Use diagram only to obtain numerical values. APPROXIMATE MEAN DECLINATION 1965 FOR CENTRE OF MAP Annual change decreasing 4.0'

Table with grid zone designation (10V) and 100,000 M. SQUARE IDENTIFICATION (CC CB 67). Includes instructions for giving a reference to nearest 100 metres.

ONE THOUSAND METRE UNIVERSAL TRANSVERSE MERCATOR GRID ZONE 10

Compiled, 1964, by the SURVEYS AND MAPPING BRANCH, DEPARTMENT OF MINES AND TECHNICAL SURVEYS, from aerial photographs taken in 1961. Field surveys 1960. Printed 1966.

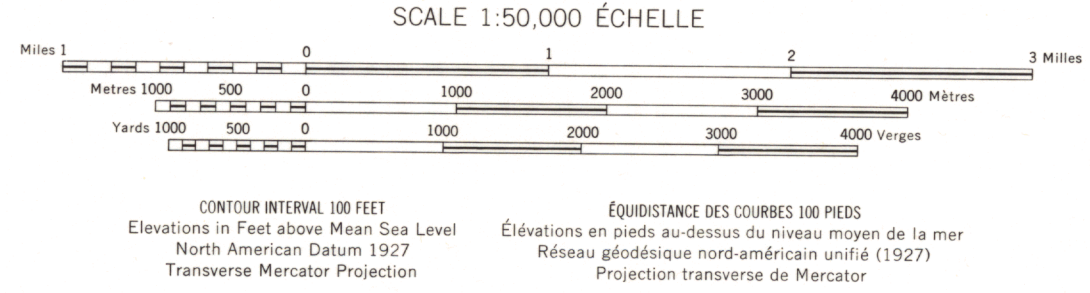
GOLD PAY CREEK YUKON TERRITORY

Rédigée en 1964, par la DIRECTION DES LEVÉS ET DE LA CARTOGRAPHIE, MINISTÈRE DES MINES ET DES RELEVÉS TECHNIQUES, d'après des photographies aériennes prises en 1961. Levés sur le terrain en 1960. Imprimée en 1966.

Copies may be obtained from the Map Distribution Office, Department of Mines and Technical Surveys, Ottawa.

Ces cartes sont en vente au Bureau de distribution des cartes, ministère des Mines et des Relevés techniques, Ottawa.

- Legend for roads, railways, power lines, and other features. Includes symbols for all-weather roads, dry weather roads, cart tracks, trails, railways, power lines, and mines.



- Legend for buildings, schools, churches, lighthouses, rivers, streams, lakes, marshes, and depressions. Includes symbols for buildings, schools, churches, lighthouses, rivers, streams, lakes, marshes, and depressions.