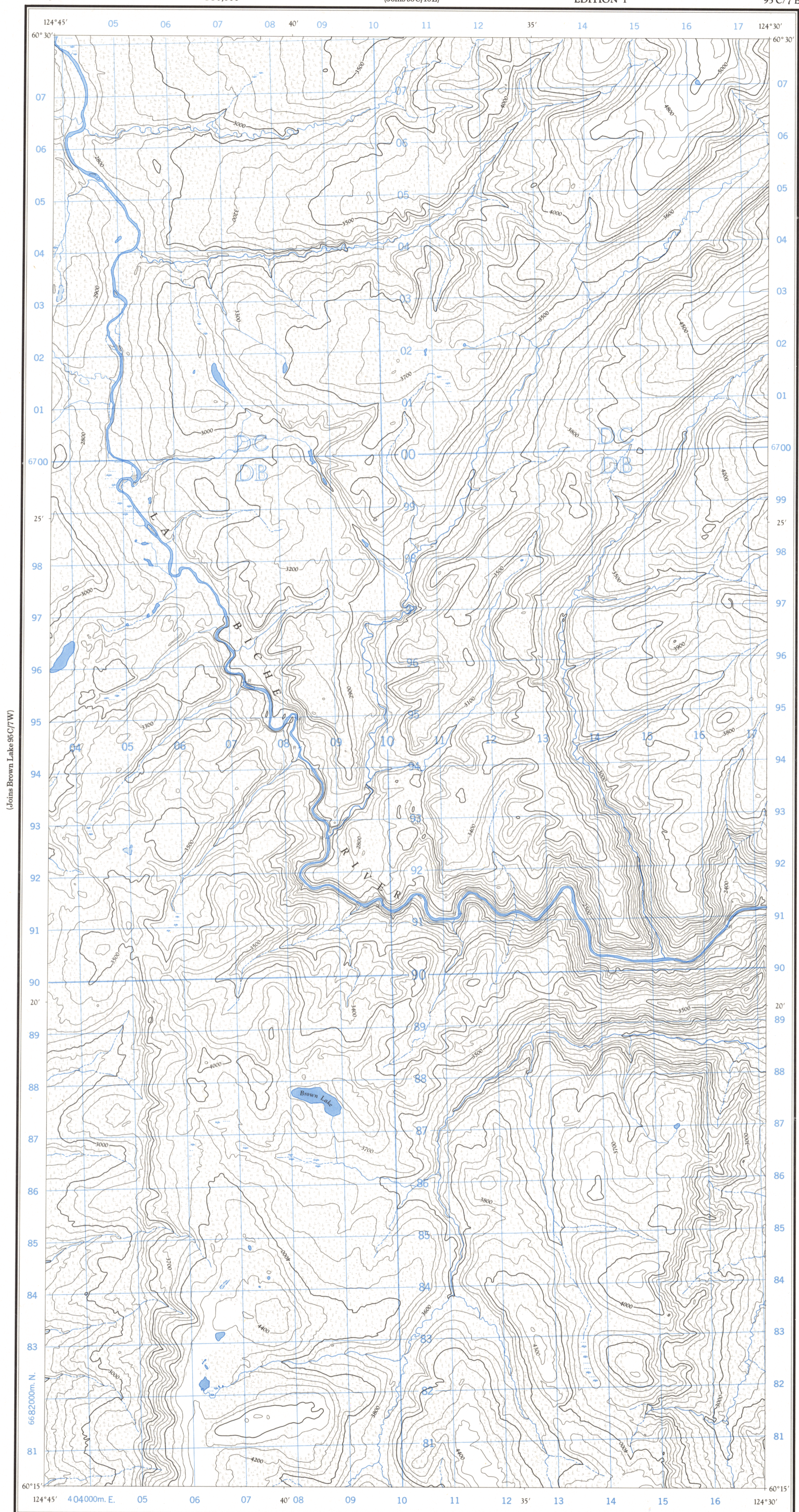
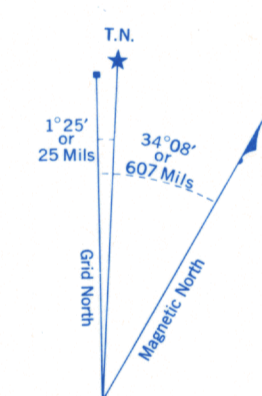
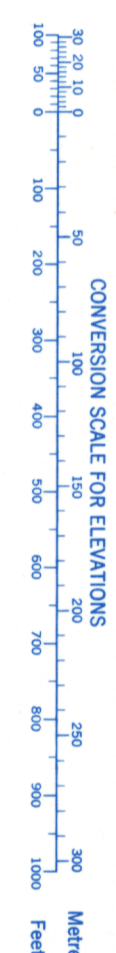


Refer to this map as: 95 C/7 E EDITION 1 ASE SERIES A 722



(Joins Brown Lake 95 C/7 W)

(Joins Bahiche Mountain 95 C/8 W)



Use diagram only to obtain numerical values. APPROXIMATE MEAN DECLINATION 1965 FOR CENTRE OF MAP. Annual change decreasing 4.1'

GRID ZONE DESIGNATION	10 V	100,000 M. SQUARE IDENTIFICATION	DC DB 67
TO GIVE A REFERENCE TO NEAREST 100 METRES			
EXAMPLE: FALLS			
EASTING: Read number on grid line immediately to left of point. Estimate tenths of a square from this line eastward to point.	09 6 096		
NORTHING: Read number on grid line immediately below point. Estimate tenths of a square from this line northward to point.	93 6 936		
MILITARY GRID REFERENCE	096936		
Nearest similar grid reference 100,000 metres (about 63 miles)			

ONE THOUSAND METRE UNIVERSAL TRANSVERSE MERCATOR GRID ZONE 10

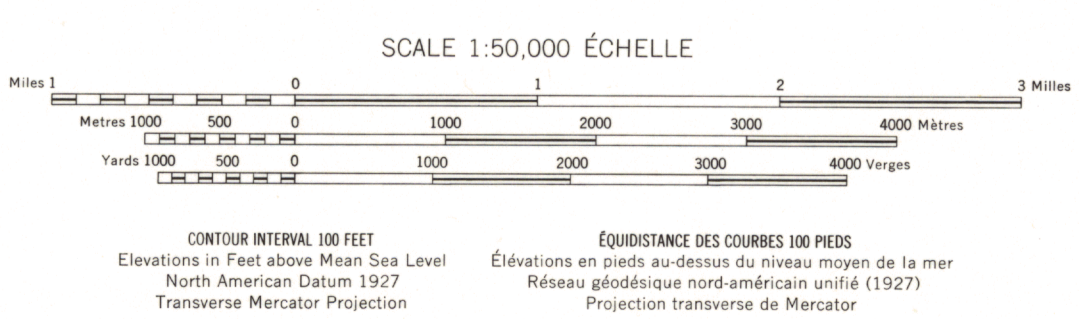
Compiled, 1963, by the SURVEYS AND MAPPING BRANCH, DEPARTMENT OF MINES AND TECHNICAL SURVEYS, from aerial photographs taken in 1961. Field surveys 1960. Printed 1966.

(Joins Mount Merrill 95 C/2 E) BROWN LAKE YUKON TERRITORY

Rédigée en 1963, par la DIRECTION DES LEVÉS ET DE LA CARTOGRAPHIE, MINISTÈRE DES MINES ET DES RELEVÉS TECHNIQUES, d'après des photographies aériennes prises en 1961. Levés sur le terrain en 1960. Imprimée en 1966.

Copies may be obtained from the Map Distribution Office, Department of Mines and Technical Surveys, Ottawa.

Ces cartes sont en vente au Bureau de distribution des cartes, ministère des Mines et des Relevés techniques, Ottawa.



- Roads: all weather, dry weather, cart track, trail or portage, Railway, normal gauge, single track, Power transmission line, Mine or Open cut, Horizontal control point, with elevation, Bench mark, with elevation.
- Routes: toute saison, période sèche, de terre, sentier ou portage, Chemin de fer voie unique (écartement normal), Mine ou fosse à ciel ouvert, Point géodésique avec cote, Repère de nivellement avec cote.

- Building, School, Church, Lighthouse, River with bridge, Stream, intermittent or dry, Lake intermittent, indefinite, Marsh or Swamp, Depression contours, Barn, Post Office, Cemetery, Phare, Rivière avec pont, Cours d'eau intermittent, ou à sec, Lac intermittent, rive imprécise, Marais ou marécage, Courbes de cuvette.