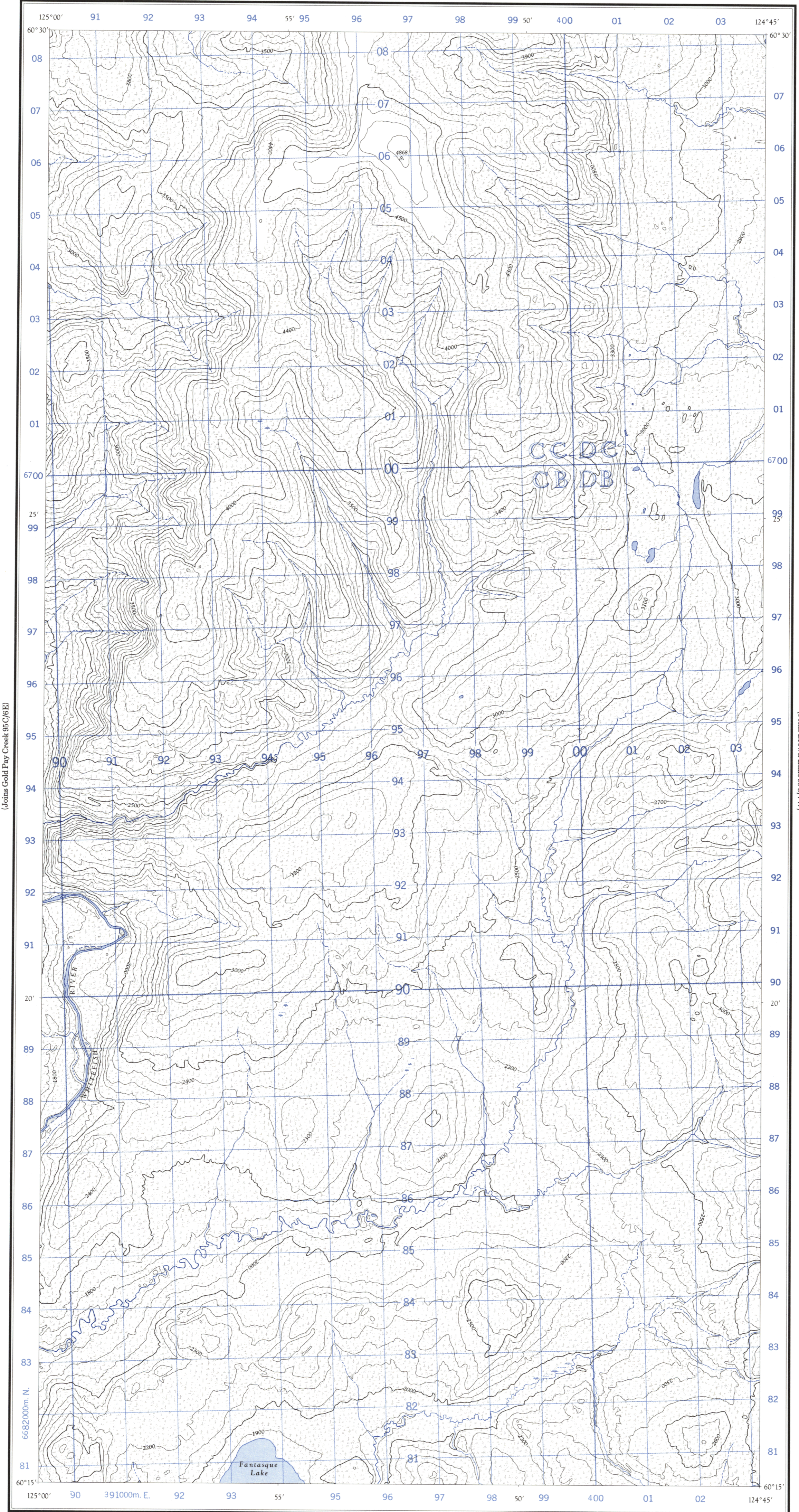
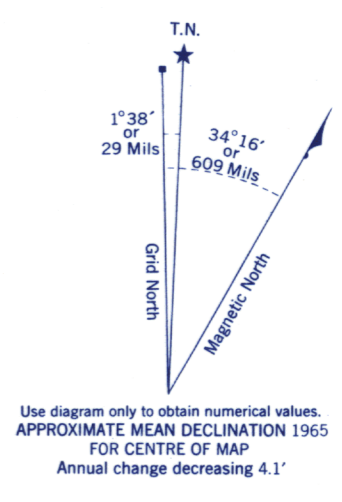
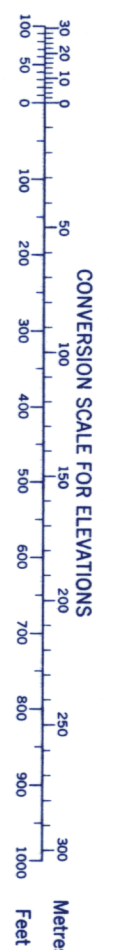


Refer to this map as: 95 C/7 W EDITION 1 ASE SERIES A 722



(Joins Gold Pay Creek 95C/6E)

(Joins Brown Lake 95C/7W)



Use diagram only to obtain numerical values. APPROXIMATE MEAN DECLINATION 1965 FOR CENTRE OF MAP. Annual change decreasing 4.1'

GRID ZONE DESIGNATION 10 V

100,000 M. SQUARE IDENTIFICATION

CC DC	67
CB DB	4

TO GIVE A REFERENCE TO NEAREST 100 METRES

EXAMPLE: STREAM JUNCTION

EASTING: Read number on grid line immediately to left of point	95
Estimate tenths of a square from this line eastward to point	5
NORTHING: Read number on grid line immediately below point	955
Estimate tenths of a square from this line northward to point	4
MILITARY GRID REFERENCE	954954

Nearest similar grid reference 100,000 metres (about 63 miles)

ONE THOUSAND METRE UNIVERSAL TRANSVERSE MERCATOR GRID ZONE 10

Compiled, 1963, by the SURVEYS AND MAPPING BRANCH, DEPARTMENT OF MINES AND TECHNICAL SURVEYS, from aerial photographs taken in 1961. Field surveys 1960. Printed 1966.

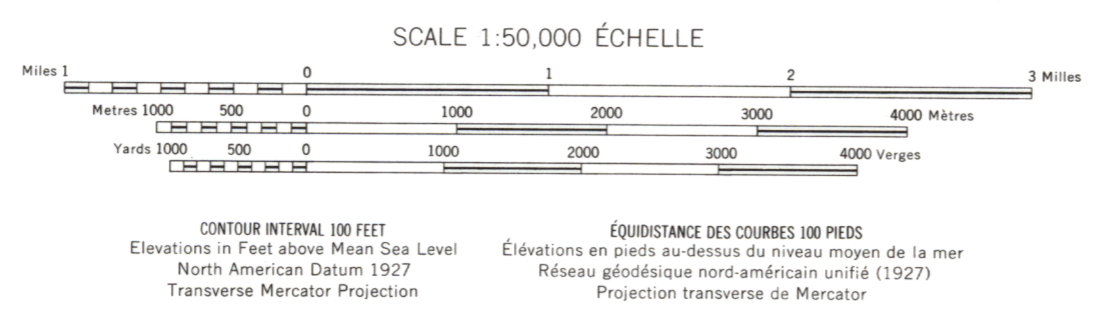
(Joins Mount Merrill 95C/2W) BROWN LAKE YUKON TERRITORY

Rédigée en 1963, par la DIRECTION DES LEVÉS ET DE LA CARTOGRAPHIE, MINISTÈRE DES MINES ET DES RELEVÉS TECHNIQUES, d'après des photographies aériennes prises en 1961. Levés sur le terrain en 1960. Imprimé en 1966.

Copies may be obtained from the Map Distribution Office, Department of Mines and Technical Surveys, Ottawa.

Ces cartes sont en vente au Bureau de distribution des cartes, ministère des Mines et des Relevés techniques, Ottawa.

- |  |  |
|--|--|
| Roads: all weather                       | Routes: toute saison                           |
| dry weather                              | période sèche                                  |
| cart track                               | de terre                                       |
| trail or portage                         | sentier ou portage                             |
| Railway, normal gauge, single track      | Chemin de fer, voie unique (écartement normal) |
| Power transmission line                  | Ligne de transport d'énergie                   |
| Mine or Open cut                         | Mine ou fosse à ciel ouvert                    |
| Horizontal control point, with elevation | Point géodésique avec cote                     |
| Bench mark, with elevation               | Repère de nivellement avec cote                |



- |                               |                                    |
|-------------------------------|------------------------------------|
| Building                      | Bâtiment                           |
| School                        | École                              |
| Church                        | Eglise                             |
| Lighthouse                    | Phare                              |
| River with bridge             | Rivière avec pont                  |
| Stream, intermittent or dry   | Cours d'eau intermittent, ou à sec |
| Lake intermittent, indefinite | Lac intermittent, rive imprécise   |
| Marsh or Swam                 | Marais ou marécage                 |
| Depression contours           | Courbes de cuvette                 |
| Barn                          | Grange                             |
| Post Office                   | Bureau de poste                    |
| Cemetery                      | Cimetière                          |