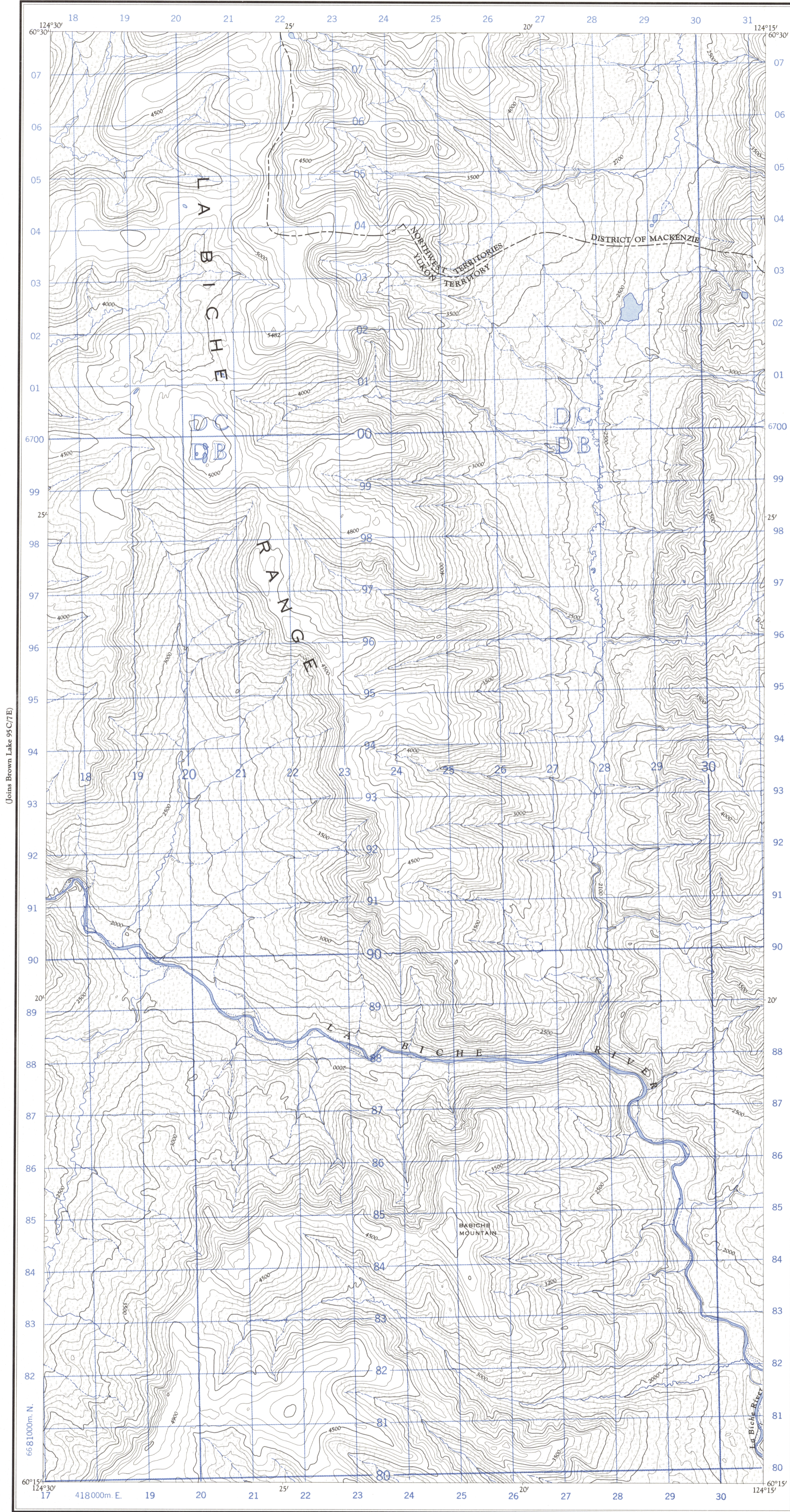
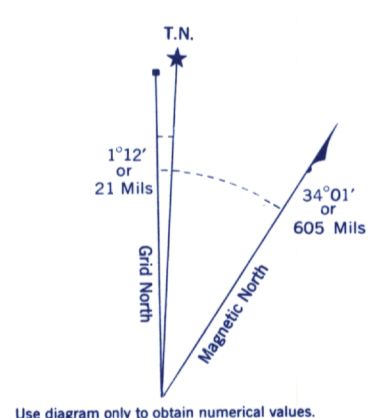


Refer to this map as: 95 C / 8 W EDITION 1 ASE SERIES A 722



(Joins Brown Lake 95C/7E)

(Joins Babiche Mountain 95C/8E)



Use diagram only to obtain numerical values. APPROXIMATE MEAN DECLINATION 1965 FOR CENTRE OF MAP. Annual change decreasing 4.2'

Table with grid zone designation (10 V), 100,000 M. square identification (DC DB 67), and an example for a stream junction showing Easting (228) and Northing (921) coordinates.

ONE THOUSAND METRE UNIVERSAL TRANSVERSE MERCATOR GRID ZONE 10

Compiled 1963, by the SURVEYS AND MAPPING BRANCH, DEPARTMENT OF MINES AND TECHNICAL SURVEYS, from aerial photographs taken in 1961. Field surveys 1960. Printed 1965.

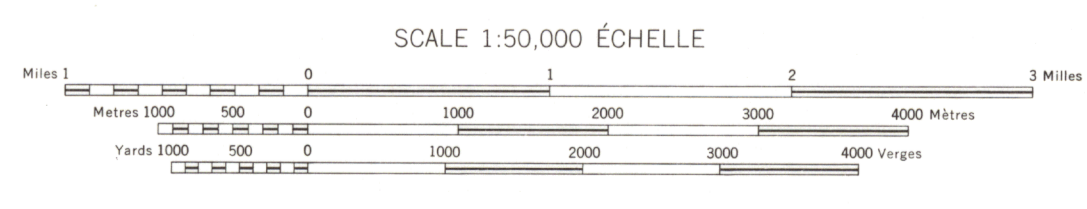
BABICHE MOUNTAIN YUKON TERRITORY - NORTHWEST TERRITORIES

Rédigée en 1963, par la DIRECTION DES LEVÉS ET DE LA CARTOGRAPHIE, MINISTÈRE DES MINES ET DES RELEVÉS TECHNIQUES, d'après des photographies aériennes prises en 1961. Levés sur le terrain en 1960. Imprimée en 1965.

Copies may be obtained from the Map Distribution Office, Department of Mines and Technical Surveys, Ottawa.

Ces cartes sont en vente au Bureau de distribution des cartes, ministère des Mines et des Relevés techniques, Ottawa.

- List of symbols for roads, trails, railways, power lines, and other features in both English and French.



- List of symbols for buildings, schools, churches, lighthouses, rivers, streams, marshes, and depressions in both English and French.

PROVISIONAL PRINT IMPRESSION PROVISOIRE