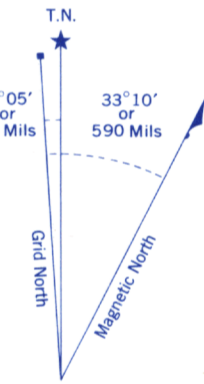
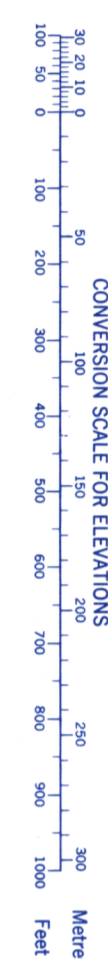
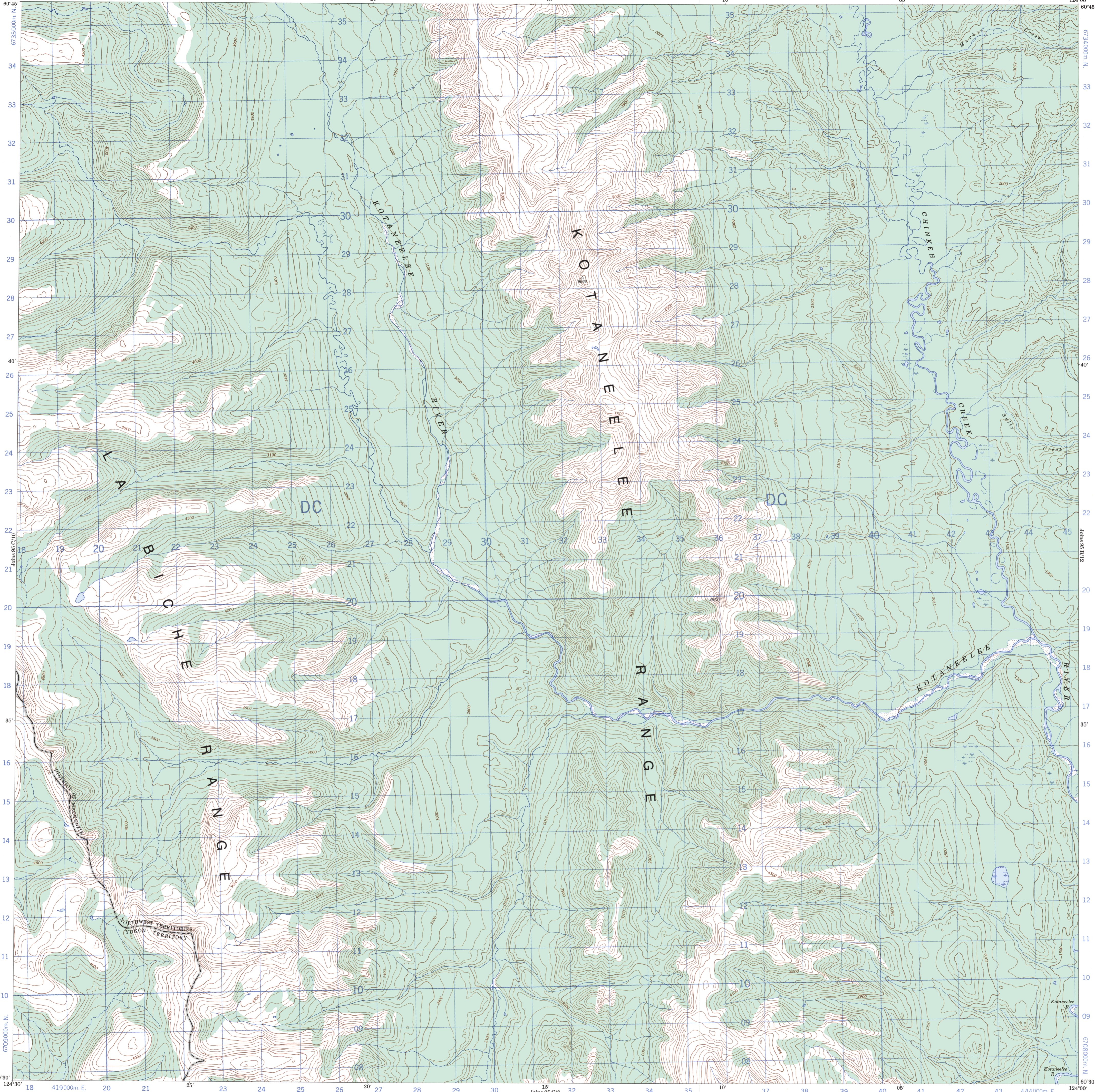
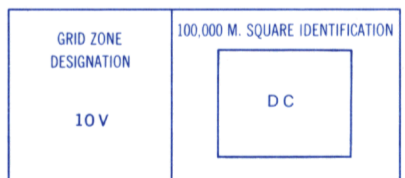


Refer to this map as: 95 C/9 EDITION 1 MCE SERIES A 733



Use diagram only to obtain numerical values. APPROXIMATE MEAN DECLINATION 1970 FOR CENTRE OF MAP. Annual change decreasing 5.8"

ONE THOUSAND METRE UNIVERSAL TRANSVERSE MERCATOR GRID ZONE 10



EXAMPLE OF METHOD USED TO GIVE A REFERENCE TO NEAREST 100 METRES. THE FOLLOWING GRID REFERENCE IS A SIMPLE ONE AND DOES NOT REFER TO A POINT ON THIS MAP

99				
98				
97				
	95	96	97	98

REFERENCE POINT CHURCH (as above)

EASTING	Read number on grid line immediately to left of point	Estimate tenths of a square from this line eastward to point	97	5
NORTHING	Read number on grid line immediately below point	Estimate tenths of a square from this line northward to point	98	4

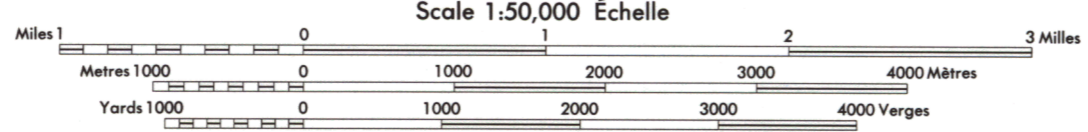
EXAMPLE MILITARY GRID REFERENCE 97584  
Nearest similar grid reference 100,000 metres (about 63 miles)

Produced, 1969, by the SURVEYS and MAPPING BRANCH, DEPARTMENT OF ENERGY, MINES AND RESOURCES, from aerial photographs taken in 1961 and 1964. Field surveys 1963. Printed 1971.

This Provisional Map is equivalent to a standard map in accuracy of content.

Some names on this map are not yet official. Corrections or additions are invited by the Surveys and Mapping Branch.

CHINKEH CREEK NORTHWEST TERRITORIES - YUKON TERRITORY



Cette carte provisoire équivaut à une carte régulière au point de vue précision de l'information.

Certains noms inscrits sur cette carte ne sont pas encore officiels. La Direction des levés et de la cartographie saurait gré au public de lui signaler corrections et additions.

Établie en 1969, par la DIRECTION DES LEVÉS ET DE LA CARTOGRAPHIE, MINISTÈRE DE L'ÉNERGIE, DES MINES ET DES RESSOURCES, à partir des photographies aériennes prises en 1961 et 1964. Levés sur le terrain en 1963. Imprimée en 1971.

Ces cartes sont en vente au Bureau de distribution des cartes, ministère de l'Énergie, des Mines et des Ressources, Ottawa.

PROVISIONAL PRINT IMPRESSION PROVISOIRE