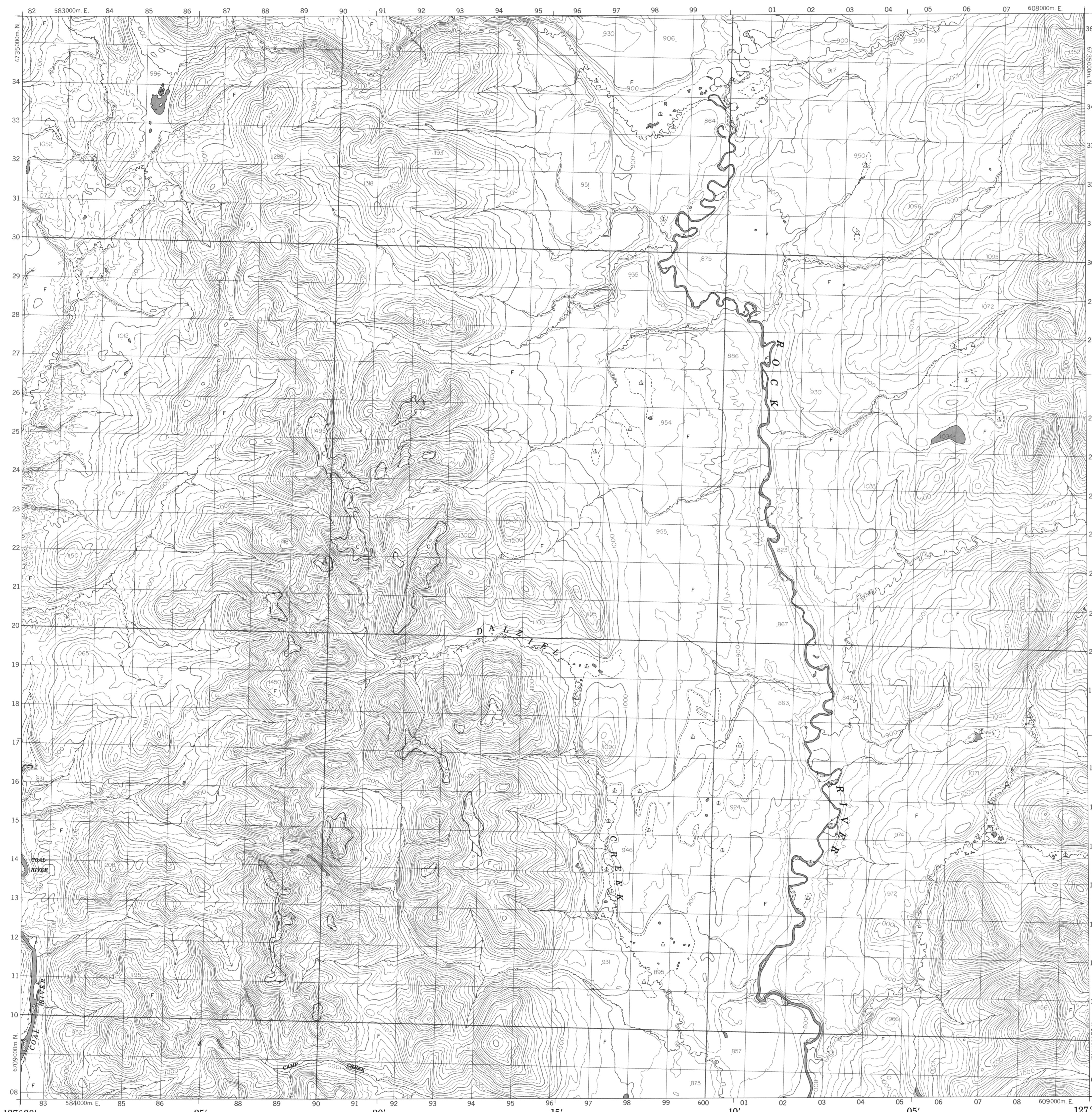


Military users refer to this map as: Référence de cette carte pour usage militaire: ÉDITION 1 MCE ÉDITION

SERIE A 701 MAP 95 D/11 CARTE

95 D/11 ÉDITION 1 ÉDITION

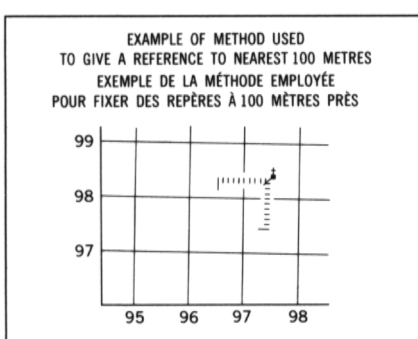
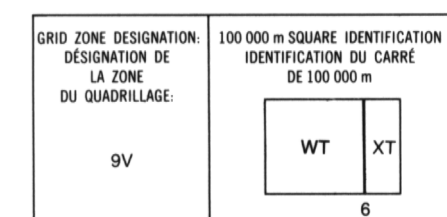


LEGEND - LÉGENDE

Legend table with two columns: English and French descriptions of symbols for roads, railways, water features, and boundaries.

PHOTOGRAPHY PHOTOGRAPHIE

Table showing grid zone designations (A-24795, A-25558, A-25589, A-25515) and their corresponding grid coordinates.



REVISION

Table with two columns for 'REVISION' and 'REVISION' (likely a typo for 'REVISION' and 'REVISION'), showing grid coordinates and values.

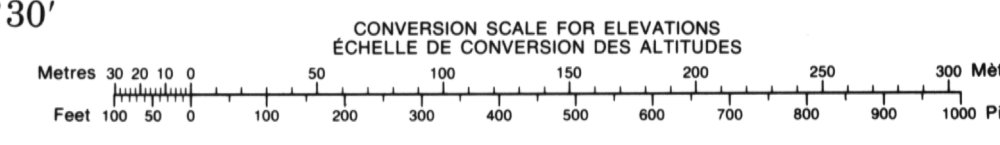
REFERENCE POINT POINT DE REPÈRE: CHURCH - ÉGLISE (see above) (ci-dessus)

Index to adjoining Maps of the National Topographic System

Index table showing map grid coordinates: 95 D/13, 95 D/14, 95 D/15, 95 D/12, 95 D/11, 95 D/10, 95 D/5, 95 D/6, 95 D/7.

ONE THOUSAND METRE UNIVERSAL TRANSVERSE MERCATOR GRID ZONE 9

Technical details about the magnetic bearing, annual change, and grid north for the map.



Produced by the Surveys and Mapping Branch, Department of Energy, Mines and Resources, Ottawa. Published in 1985. Includes information on obtaining copies and the North American Datum 1927.

Elevations in metres above mean sea level. Contour interval: 20 metres. YUKON TERRITORY TERRITOIRE DU YUKON. Scale 1:50 000 Échelle.

Altitudes in metres. Équidistance des courbes: 20 mètres. Système de référence géodésique Nord-Américain 1927. Projection Transverse de Mercator.

Établi par la Direction des Levés et de la Cartographie, Ministère de l'Énergie, des Mines et des Ressources, Ottawa, publiée en 1985. Ces cartes sont en vente au Bureau des Cartes du Canada.