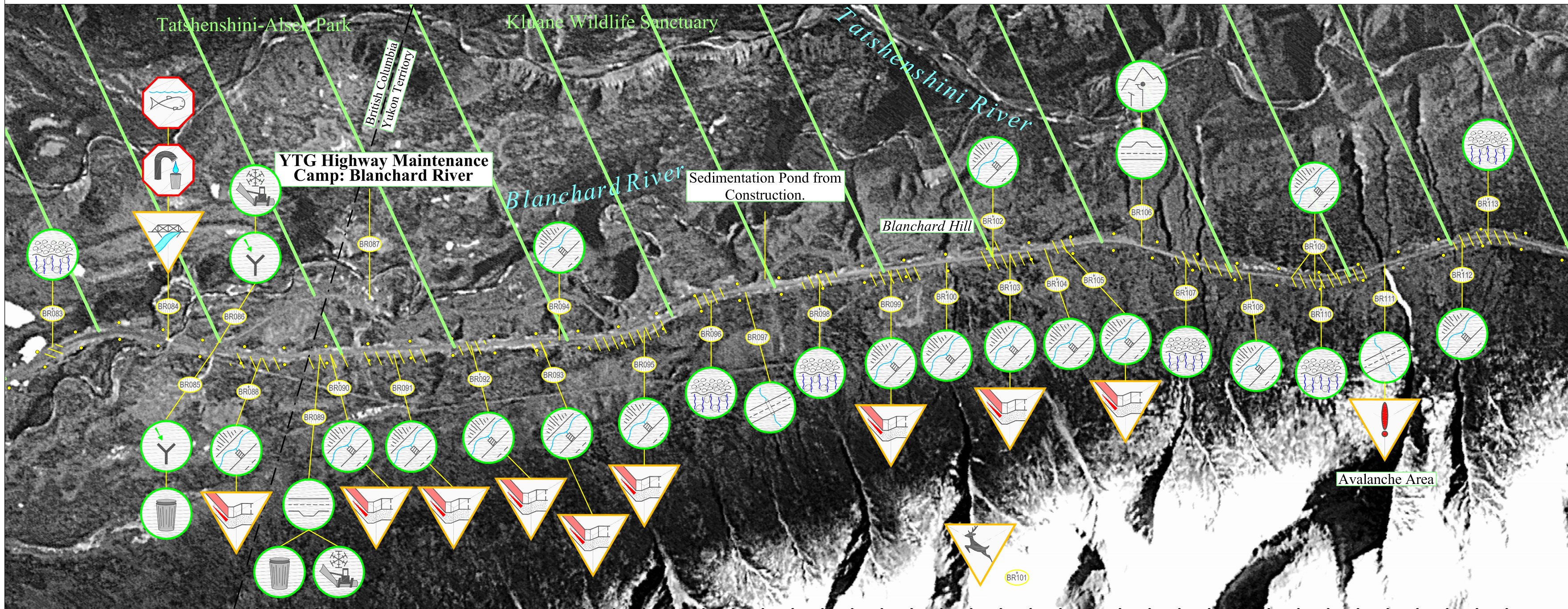


Blanchard River Highway Maintenance Section: Sheet 10 (km 144 to km 153)



Highway Feature		Engineering Component		Environmental Component		Maintenance Advisory System		Section Specific Features	
AC = Access Points	RC = Rock Cuts/ Slide Areas	UC = Utility encroachment /Crossing	US = User Safety (eg. Avalanche / Wildlife Area)	EC = Erosion Control	CU = Cultural Use	WQ = Water Quality	Notification	Soil Remediation Advisory	Snow Poles *
BP = Borrow Pits	PO = Pull Out	IS = Insulated Structure	IC = Icing Control	ECP = Erosion Control Protected by Geotextile	HTG = Heritage	REC = Recreation	Caution *	Revegetation Advisory	Champagne and Aishihik FN Settlement Lands
DNG = Drainage (Roadside Ditch, Run-off Control Structures, etc.)	CV = Culvert	RS = Road Surface	RV = Revegetation (Existing Material, Revegetating & Reclaimed Areas)	WM = Waste Management	BL = Boat Launch	WH = Wildlife and/or Wildlife Habitat	Alert *	Road Surface Advisory	Avalanche Area
Q = Quarries	MP = Multiplate	GS = Granular Source / Stockpile	SF = Snow Fence (drifting control structure)	OH = Outhouse	FH = Fish and/or Fish Habitat	SV = Scenic Viewing		Caution Bar	
RA = Rest Area	BR = Bridge	WX = Wildlife Crossing	SR = Snow Removal	GT = Geotextile / Granular Filters	RCP = Residential / Commercial Property				

Notes:
 BR101: Wildlife crossing from Blanchard River Camp to granular source 115-A-07.
 Geotextile under embankment at: BR083, 113, 110, 107, 105, 098, 096, 092.
 Perforated pipes at: BR112, 109, 108, 105, 104, 103, 102, 100, 094, 092, 090, 088.