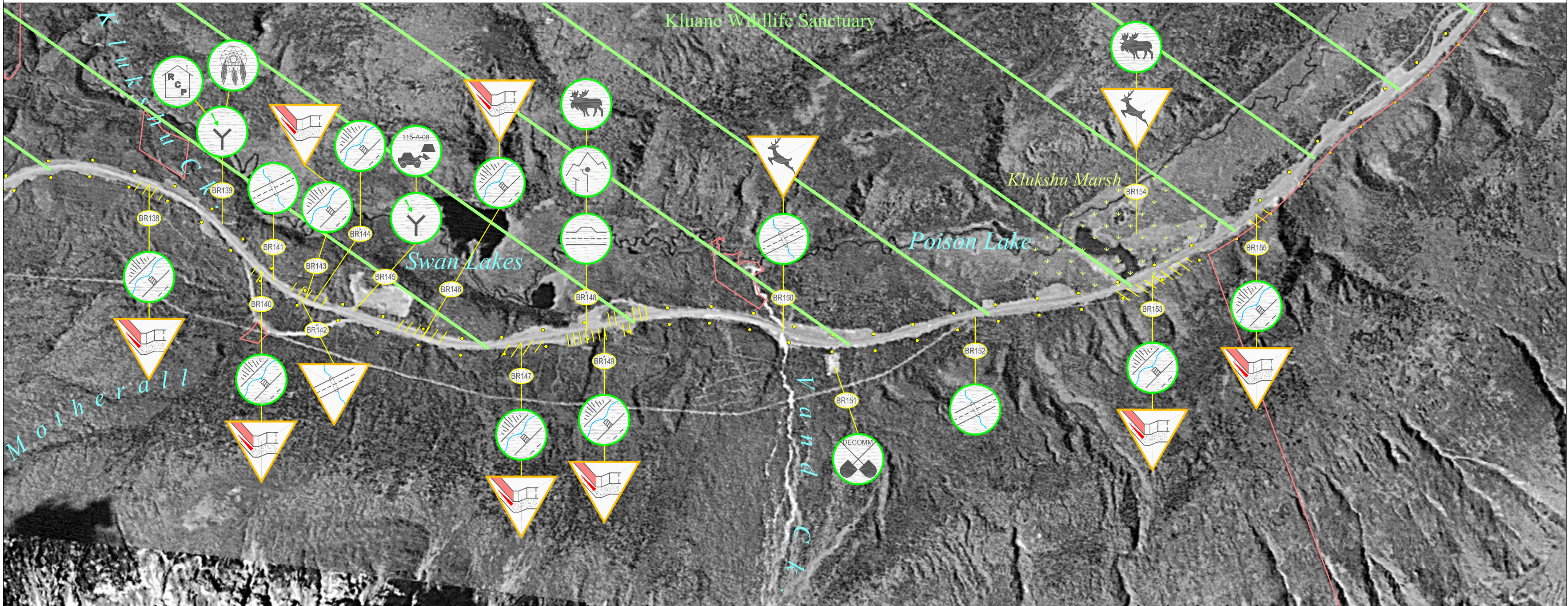


Blanchard River Highway Maintenance Section: Sheet 13 (km 169 to km 179)



Highway Feature		Engineering Component		Environmental Component		Maintenance Advisory System		Section Specific Features	
AC = Access Points	RC = Rock Cuts/ Slide Areas	UC = Utility encroachment /Crossing	US = User Safety (eg. Avalanche / Wildlife Area)	EC = Erosion Control	CU = Cultural Use	WQ = Water Quality	Notification	Snow Poles *	Notes: BR142: Headwall on culvert inlet. BR144: Perforated pipes. BR148: Viewpoint for swans nesting at Swan Lakes. BR149: Geotextile on both sides.
BP = Borrow Pits	PO = Pull Out	IS = Insulated Structure	IC = Icing Control	ECP = Erosion Control Protected by Geotextile	HTG = Heritage	REC = Recreation	Caution *	Soil Remediation Advisory	
DNG = Drainage (Roadside Ditch, Run-off Control Structures, etc.)	CV = Culvert	RS = Road Surface	RV = Revegetation (Existing Material, Revegetating & Reclaimed Areas)	WM = Waste Management	BL = Boat Launch	WH = Wildlife and/or Wildlife Habitat	Alert *	Revegetation Advisory	
Q = Quarries	MP = Multiplate	GS = Granular Source / Stockpile	SF = Snow Fence (drifting control structure)	OH = Outhouse	FH = Fish and/or Fish Habitat	SV = Scenic Viewing	Road Surface Advisory	Champagne and Aishihik FN Settlement Lands	
RA = Rest Area	BR = Bridge	WX = Wildlife Crossing	SR = Snow Removal	GT = Geotextile / Granular Filters	RCP = Residential / Commercial Property		Caution Bar		



Scale 1:20 000