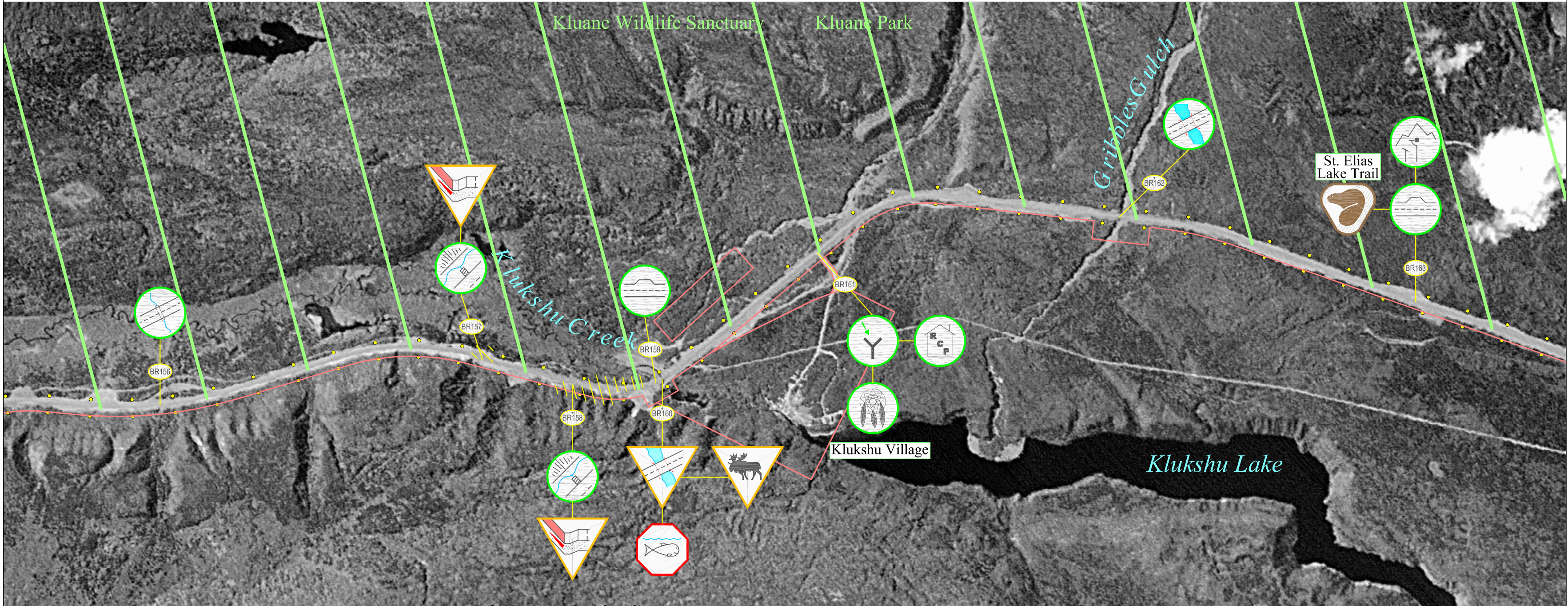


# Blanchard River Highway Maintenance Section: Sheet 14 (km 178 to km 188)



Highway Feature		Engineering Component		Environmental Component		Maintenance Advisory System		Section Specific Features	Notes:
<ul style="list-style-type: none"> <li>AC = Access Points</li> <li>BP = Borrow Pits</li> <li>DNG = Drainage (Roadside Ditch, Run-off Control Structures, etc.)</li> <li>Q = Quarries</li> <li>RA = Rest Area</li> </ul>	<ul style="list-style-type: none"> <li>RC = Rock Cuts/ Slide Areas</li> <li>PO = Pull Out</li> <li>CV = Culvert</li> <li>MP = Multiplate</li> <li>BR = Bridge</li> </ul>	<ul style="list-style-type: none"> <li>UC = Utility encroachment /Crossing</li> <li>IS = Insulated Structure</li> <li>RS = Road Surface</li> <li>GS = Granular Source / Stockpile</li> <li>WX = Wildlife Crossing</li> </ul>	<ul style="list-style-type: none"> <li>US = User Safety (eg. Avalanche / Wildlife Area)</li> <li>IC = Icing Control</li> <li>RV = Revegetation (Existing Material, Revegetating &amp; Reclaimed Areas)</li> <li>SF = Snow Fence (drifting control structure)</li> <li>SR = Snow Removal</li> </ul>	<ul style="list-style-type: none"> <li>EC = Erosion Control</li> <li>ECP = Erosion Control Protected by Geotextile</li> <li>WM = Waste Management</li> <li>OH = Outhouse</li> <li>GT = Geotextile / Granular Filters</li> </ul>	<ul style="list-style-type: none"> <li>CU = Cultural Use</li> <li>HTG = Heritage</li> <li>BL = Boat Launch</li> <li>FH = Fish and/or Fish Habitat</li> <li>RCP = Residential / Commercial Property</li> </ul>	<ul style="list-style-type: none"> <li>WQ = Water Quality</li> <li>REC = Recreation</li> <li>WH = Wildlife and/or Wildlife Habitat</li> <li>SV = Scenic Viewing</li> </ul>	<ul style="list-style-type: none"> <li>Notification</li> <li>Caution *</li> <li>Alert *</li> </ul>	<ul style="list-style-type: none"> <li>Soil Remediation Advisory</li> <li>Revegetation Advisory</li> <li>Road Surface Advisory</li> <li>Caution Bar</li> </ul>	

Notes:  
 BR158: Perforated pipes.  
 BR160: Geotextile under plunge pond, bed, inlet & outlet channel rip-rap; WH, Bears frequent area when salmon spawning.  
 BR162: Geotextile under rip-rap.