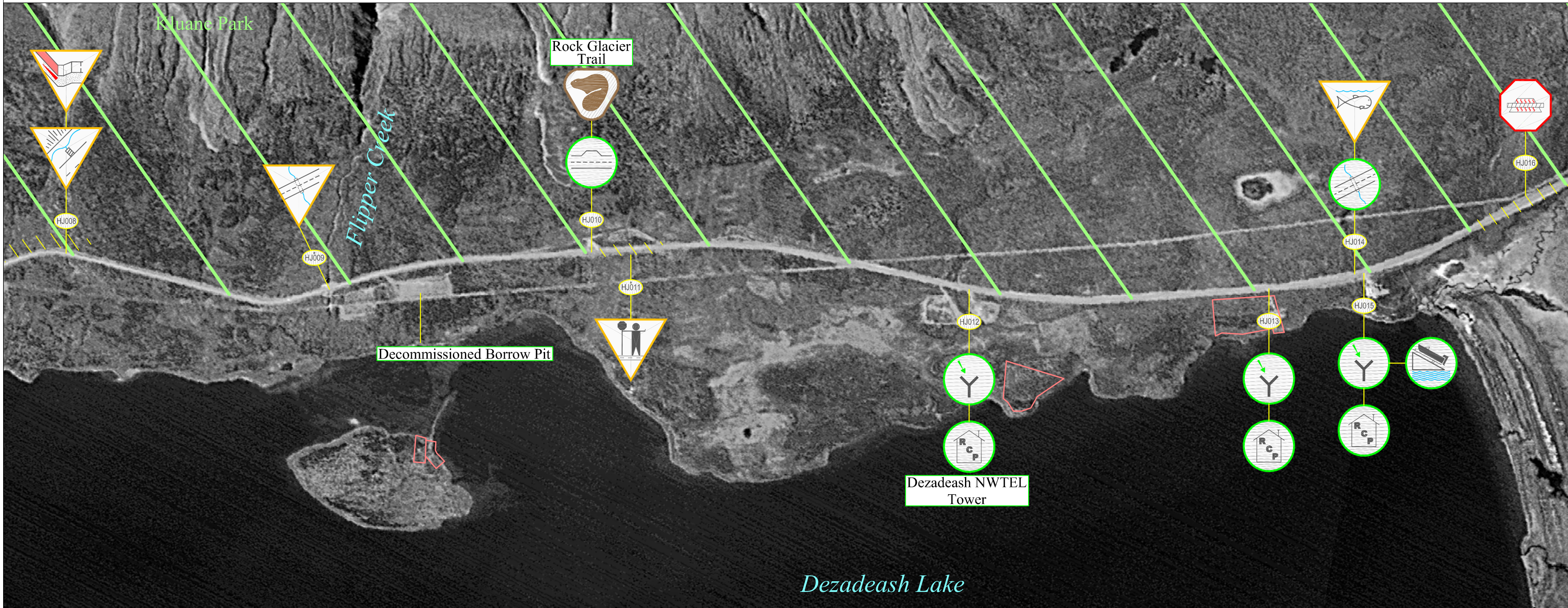


Haines Junction Highway Maintenance Section: Sheet 17 (km 199 to km 208)



Highway Feature		Engineering Component		Environmental Component		Maintenance Advisory System		Section Specific Features
AC = Access Points	RC = Rock Cuts/ Slide Areas	UC = Utility encroachment /Crossing	US = User Safety (eg. Avalanche / Wildlife Area)	EC = Erosion Control	CU = Cultural Use	WQ = Water Quality	Notification	Soil Remediation Advisory
BP = Borrow Pits	PO = Pull Out	IS = Insulated Structure	IC = Icing Control	ECP = Erosion Control Protected by Geotextile	HTG = Heritage	REC = Recreation	Caution *	Revegetation Advisory
DNG = Drainage (Roadside Ditch, Run-off Control Structures, etc.)	CV = Culvert	RS = Road Surface	RV = Revegetation (Existing Material, Revegetating & Reclaimed Areas)	WM = Waste Management	BL = Boat Launch	WH = Wildlife and/or Wildlife Habitat	Alert *	Road Surface Advisory
Q = Quarries	MP = Multiplate	GS = Granular Source / Stockpile	SF = Snow Fence (drifting control structure)	OH = Outhouse	FH = Fish and/or Fish Habitat	SV = Scenic Viewing	Caution Bar	
RA = Rest Area	BR = Bridge	WX = Wildlife Crossing	SR = Snow Removal	GT = Geotextile / Granular Filters	RCP = Residential / Commercial Property			

Notes:
 HJ009: Material removed from Flipper Creek to be deposited in Decommissioned Borrow Pit across highway.
 HJ011: Surface undulations