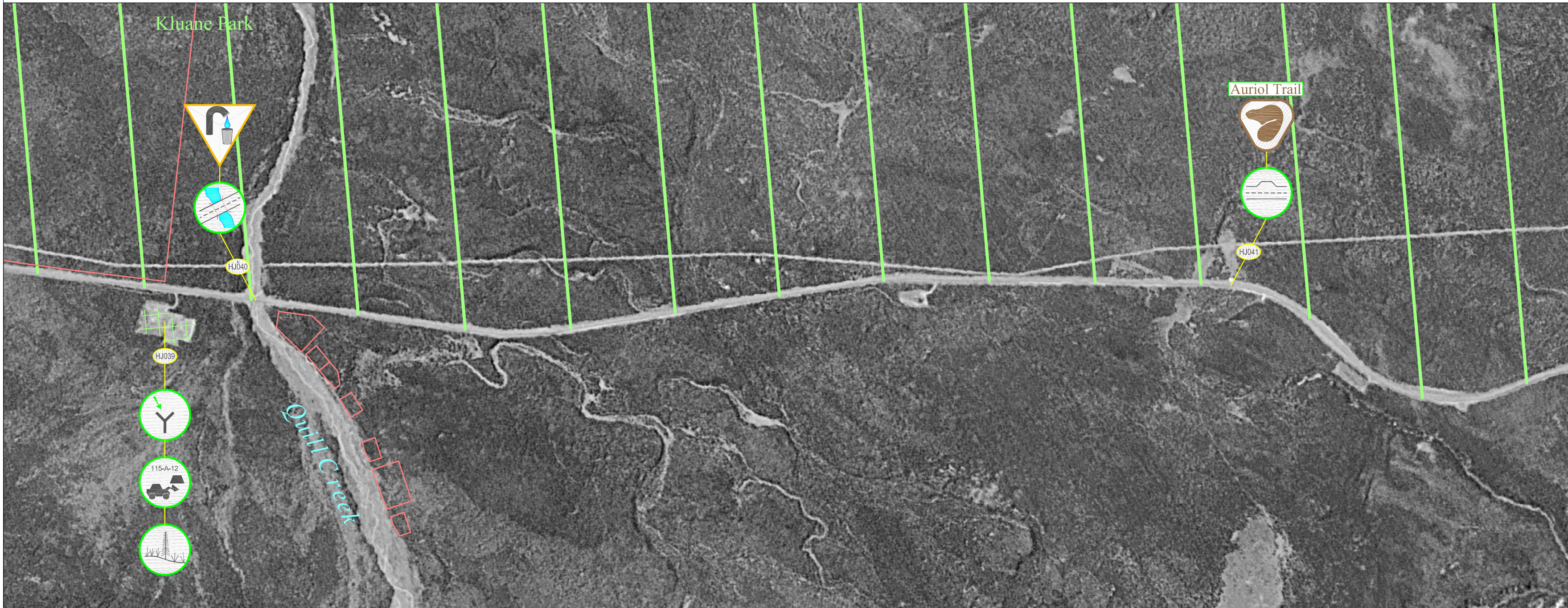


# Haines Junction Highway Maintenance Section: Sheet 21 (km 232 to km 241)



Highway Feature		Engineering Component		Environmental Component		Maintenance Advisory System		Section Specific Features	Notes: HJ040: Twin multiplate; Land use downstream.
AC = Access Points BP = Borrow Pits DNG = Drainage (Roadside Ditch, Run-off Control Structures, etc.) Q = Quarries RA = Rest Area	RC = Rock Cuts/ Slide Areas PO = Pull Out CV = Culvert MP = Multiplate BR = Bridge	UC = Utility encroachment /Crossing IS = Insulated Structure RS = Road Surface GS = Granular Source / Stockpile WX = Wildlife Crossing	US = User Safety (eg. Avalanche / Wildlife Area) IC = Icing Control RV = Revegetation (Existing Material, Revegetating & Reclaimed Areas) SF = Snow Fence (drifting control structure) SR = Snow Removal	EC = Erosion Control ECP = Erosion Control Protected by Geotextile WM = Waste Management OH = Outhouse GT = Geotextile / Granular Filters	CU = Cultural Use HTG = Heritage BL = Boat Launch FH = Fish and/or Fish Habitat RCP = Residential / Commercial Property	WQ = Water Quality REC = Recreation WH = Wildlife and/or Wildlife Habitat SV = Scenic Viewing	Notification Caution * Alert *	Soil Remediation Advisory Revegetation Advisory Road Surface Advisory Caution Bar	



Scale 1:20 000