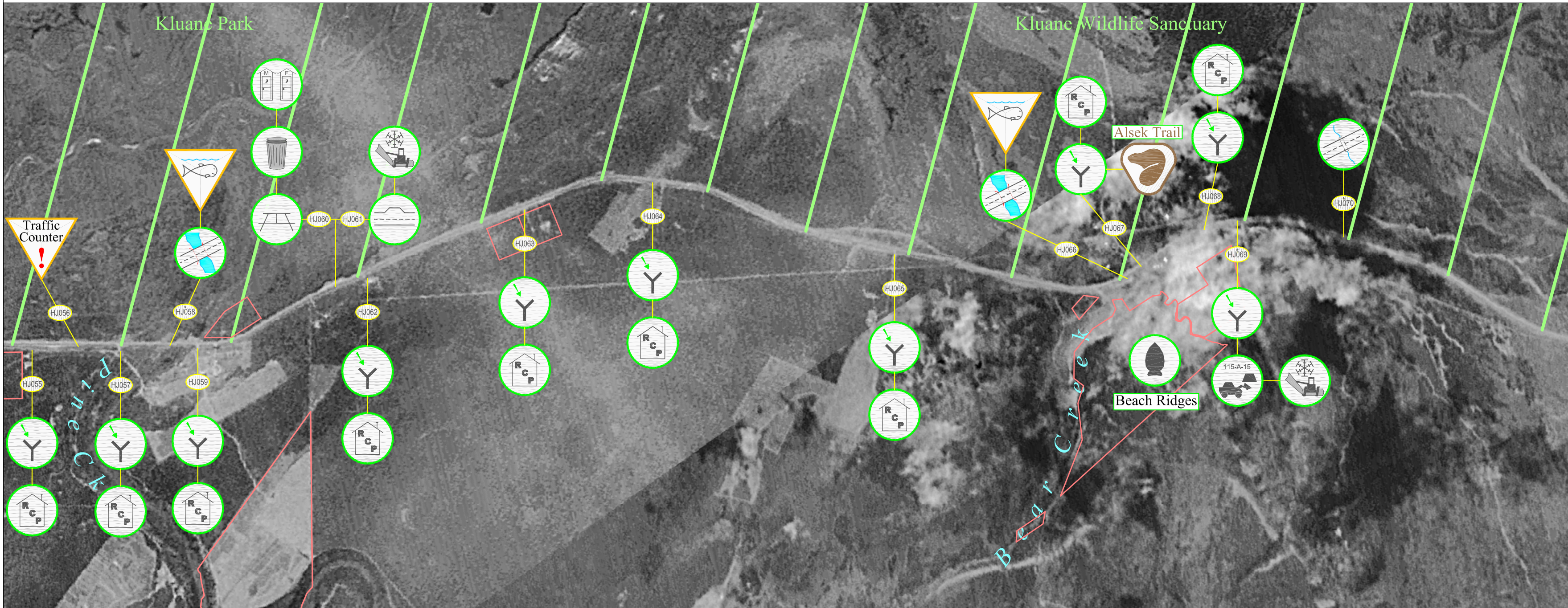


# Haines Junction Highway Maintenance Section: Sheet 23 (km 1639 to km 1649)



| Highway Feature   |  | Engineering Component  |  | Environmental Component   |   | Maintenance Advisory System  |                                      | Section Specific Features  | Notes:<br>HJ058: Fish resting pool in outlet.<br>HJ069: McIntosh Pit.<br>HJ070: Twin pipe culvert. |
|---|--|--|--|---|---|--|--------------------------------------|--|--|
| AC = Access Points<br>BP = Borrow Pits<br>DNG = Drainage (Roadside Ditch, Run-off Control Structures, etc.)<br>Q = Quarries<br>RA = Rest Area | RC = Rock Cuts/ Slide Areas<br>PO = Pull Out<br>CV = Culvert<br>MP = Multiplate<br>BR = Bridge | UC = Utility encroachment /Crossing<br>IS = Insulated Structure<br>RS = Road Surface<br>GS = Granular Source / Stockpile<br>WX = Wildlife Crossing | US = User Safety (eg. Avalanche / Wildlife Area)<br>IC = Icing Control<br>RV = Revegetation (Existing Material, Revegetating & Reclaimed Areas)<br>SF = Snow Fence (drifting control structure)<br>SR = Snow Removal | EC = Erosion Control<br>ECP = Erosion Control Protected by Geotextile<br>WM = Waste Management<br>OH = Outhouse<br>GT = Geotextile / Granular Filters | CU = Cultural Use<br>HTG = Heritage<br>BL = Boat Launch<br>FH = Fish and/or Fish Habitat<br>RCP = Residential / Commercial Property | WQ = Water Quality<br>REC = Recreation<br>WH = Wildlife and/or Wildlife Habitat<br>SV = Scenic Viewing | Notification<br>Caution *<br>Alert * | Soil Remediation Advisory<br>Revegetation Advisory<br>Road Surface Advisory<br>Caution Bar |  |