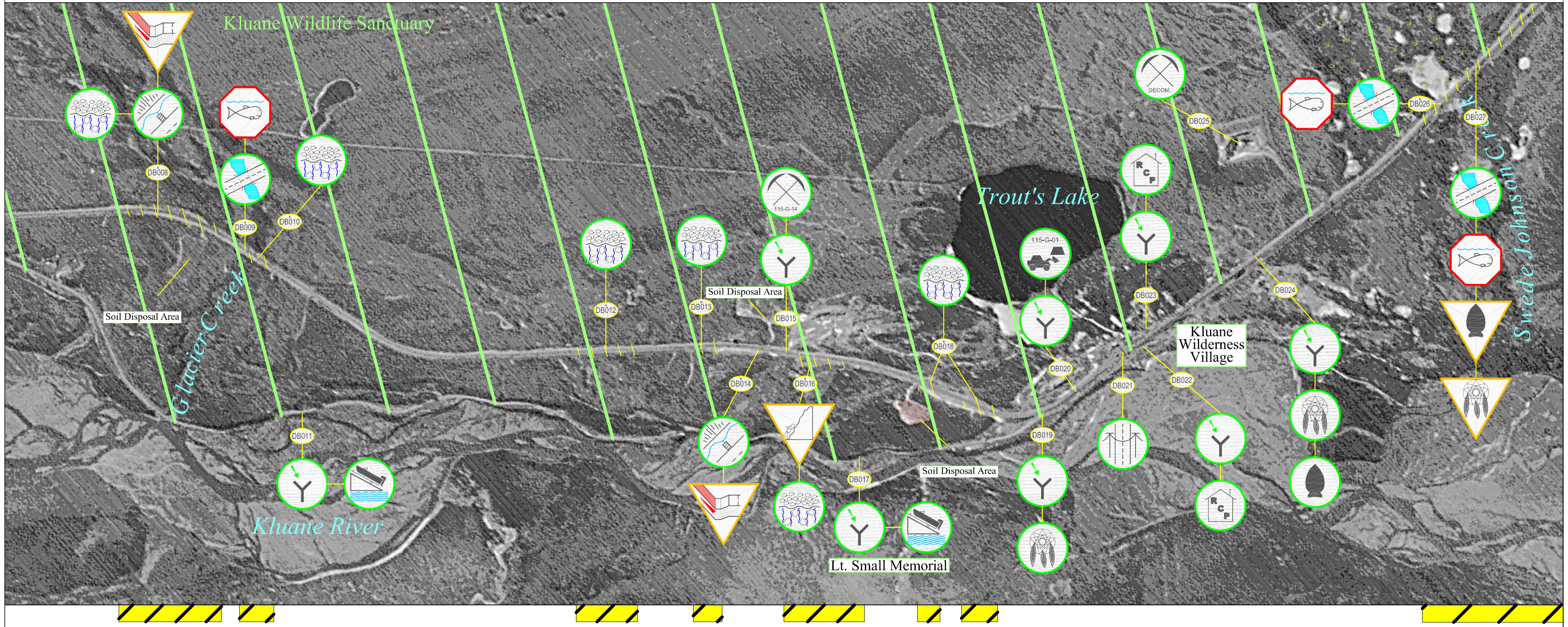


Destruction Bay Highway Maintenance Section: Sheet 42 (km 1790 to km 1802)



Highway Feature	Engineering Component	Environmental Component	Maintenance Advisory System
AC = Access Points BP = Borrow Pits DNG = Drainage (Roadside Ditch, Run-off Control Structures, etc.) Q = Quarries RA = Rest Area RC = Rock Cuts/ Slide Areas PO = Pull Out CV = Culvert MP = Multiplate BR = Bridge UC = Utility encroachment /Crossing IS = Insulated Structure RS = Road Surface GS = Granular Source / Stockpile WX = Wildlife Crossing	US = User Safety (eg. Avalanche / Wildlife Area) IC = Icing Control RV = Revegetation (Existing Material, Revegetating & Reclaimed Areas) SF = Snow Fence (drifting control structure) SR = Snow Removal EC = Erosion Control ECP = Erosion Control Protected by Geotextile WM = Waste Management OH = Outhouse GT = Geotextile / Granular Filters	CU = Cultural Use HTG = Heritage BL = Boat Launch FH = Fish and/or Fish Habitat RCP = Residential / Commercial Property WQ = Water Quality REC = Recreation WH = Wildlife and/or Wildlife Habitat SV = Scenic Viewing	Notification Caution * Alert * Soil Remediation Advisory Revegetation Advisory Road Surface Advisory Caution Bar <p style="font-size: small;">* Confirm if special maintenance required (Vol. 2., Sec. 1.)</p>

Notes:
 Geotextile under embankment at: DB008, 010, 012, 013, 018.
 Geotextile under bed, inlet & outlet channels at: DB009, 026, 027.
 DB014: Geotextile both sides.
 DB016: Geotextile under embankment.
 -Soil disposal area west of Lt. Small Memorial contains treated hydrocarbon contaminated soil.
 -Surface distortions due to differential settling.