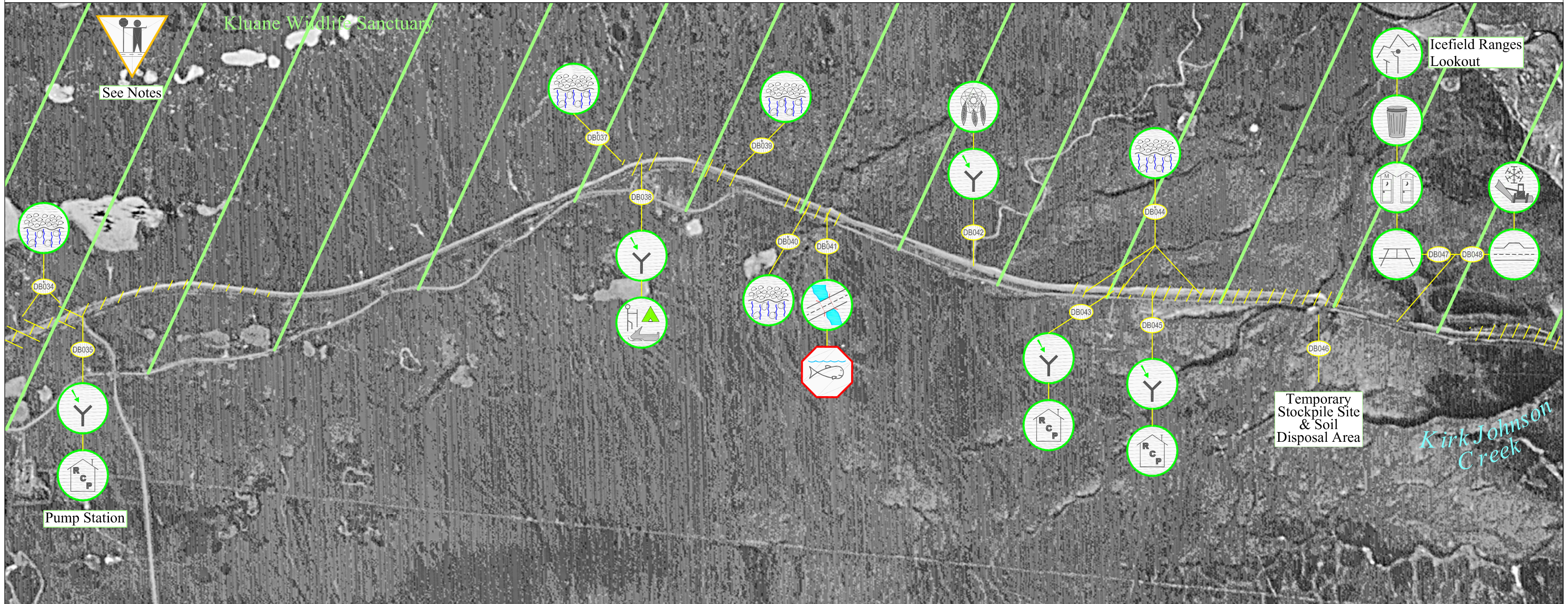


Destruction Bay Highway Maintenance Section: Sheet 44 (km 1808 to km 1817)



Highway Feature	Engineering Component	Environmental Component	Maintenance Advisory System
<ul style="list-style-type: none"> AC = Access Points BP = Borrow Pits DNG = Drainage (Roadside Ditch, Run-off Control Structures, etc.) Q = Quarries RA = Rest Area RC = Rock Cuts/ Slide Areas PO = Pull Out CV = Culvert MP = Multiplate BR = Bridge IS = Insulated Structure RS = Road Surface GS = Granular Source / Stockpile WX = Wildlife Crossing UC = Utility encroachment / Crossing SF = Snow Fence (drifting control structure) SR = Snow Removal 	<ul style="list-style-type: none"> US = User Safety (eg. Avalanche / Wildlife Area) IC = Icing Control RV = Revegetation (Existing Material, Revegetating & Reclaimed Areas) SF = Snow Fence (drifting control structure) SR = Snow Removal EC = Erosion Control ECP = Erosion Control Protected by Geotextile WM = Waste Management OH = Outhouse GT = Geotextile / Granular Filters 	<ul style="list-style-type: none"> CU = Cultural Use HTG = Heritage BL = Boat Launch FH = Fish and/or Fish Habitat RCP = Residential / Commercial Property WQ = Water Quality REC = Recreation WH = Wildlife and/or Wildlife Habitat SV = Scenic Viewing 	<ul style="list-style-type: none"> Notification Caution * Alert * Soil Remediation Advisory Revegetation Advisory Road Surface Advisory Caution Bar <p style="font-size: small;">* Confirm if special maintenance required (Vol. 2., Sec. 1.)</p>

Notes:
 Geotextile under embankment at: DB034, 037, 039, 040, 044.
 DB041: Geotextile under intake & outlet rip-rap.
 -Surface distortions due to differential settling.