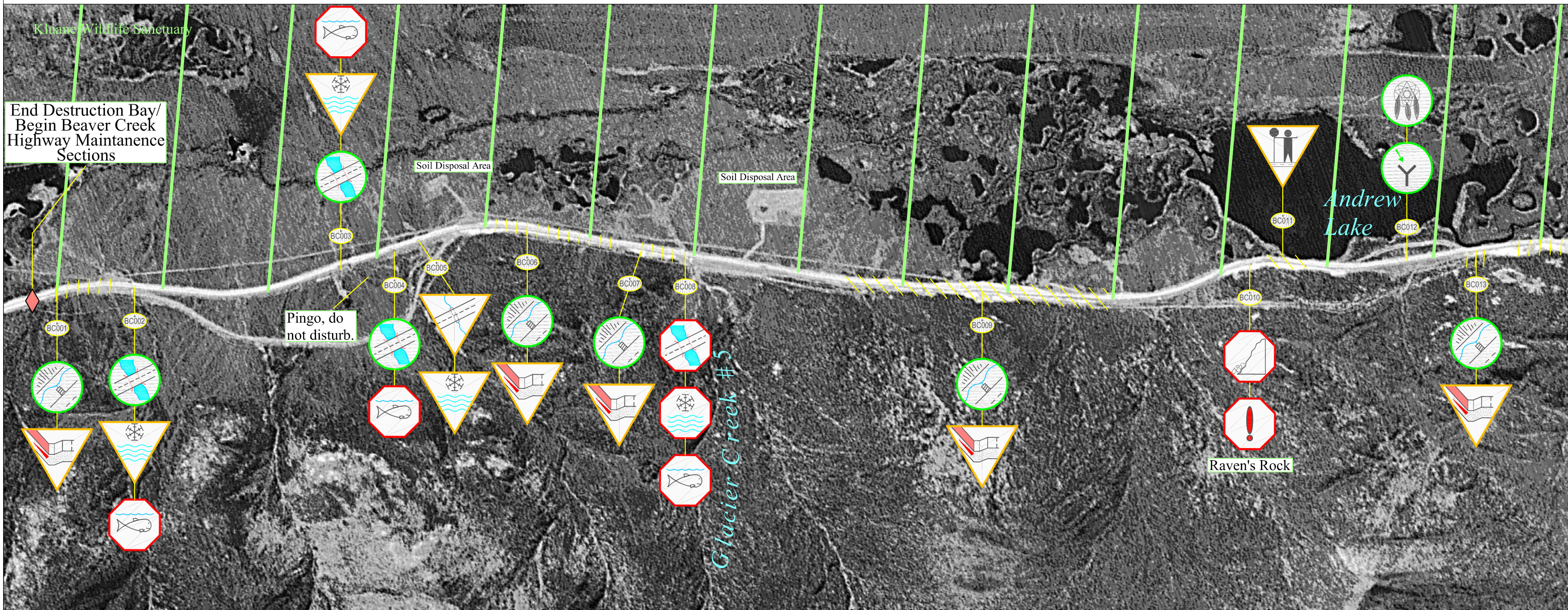


Beaver Creek Highway Maintenance Section: Sheet 47 (km 1834 to km 1841)



Highway Feature		Engineering Component		Environmental Component		Maintenance Advisory System		Section Specific Features	Notes:	
<ul style="list-style-type: none"> AC = Access Points BP = Borrow Pits DNG = Drainage (Roadside Ditch, Run-off Control Structures, etc.) Q = Quarries RA = Rest Area 	<ul style="list-style-type: none"> RC = Rock Cuts/ Slide Areas PO = Pull Out CV = Culvert MP = Multiplate BR = Bridge 	<ul style="list-style-type: none"> UC = Utility encroachment /Crossing IS = Insulated Structure RS = Road Surface GS = Granular Source / Stockpile WX = Wildlife Crossing 	<ul style="list-style-type: none"> US = User Safety (eg. Avalanche / Wildlife Area) IC = Icing Control RV = Revegetation (Existing Material, Revegetating & Reclaimed Areas) SF = Snow Fence (drifting control structure) SR = Snow Removal 	<ul style="list-style-type: none"> EC = Erosion Control ECP = Erosion Control Protected by Geotextile WM = Waste Management OH = Outhouse GT = Geotextile / Granular Filters 	<ul style="list-style-type: none"> CU = Cultural Use HTG = Heritage BL = Boat Launch FH = Fish and/or Fish Habitat RCP = Residential / Commercial Property 	<ul style="list-style-type: none"> WQ = Water Quality REC = Recreation WH = Wildlife and/or Wildlife Habitat SV = Scenic Viewing 	<ul style="list-style-type: none"> Notification Caution * Alert * 	<ul style="list-style-type: none"> Soil Remediation Advisory Revegetation Advisory Road Surface Advisory Caution Bar 		<ul style="list-style-type: none"> Mineral Claims

Notes:
 Geotextile under bed, channel inlet & outlets at: BC002, 003, 004, 008.
 Geotextile under embankment at: BC001, 006, 007, 009.
 BC002: Possible Flooding.
 BC005: Clean out sediment pond with education truck.
 BC009; 011: Surface distortions due to differential settling.
 BC010: Monitor rock bolts on Raven's Rock.