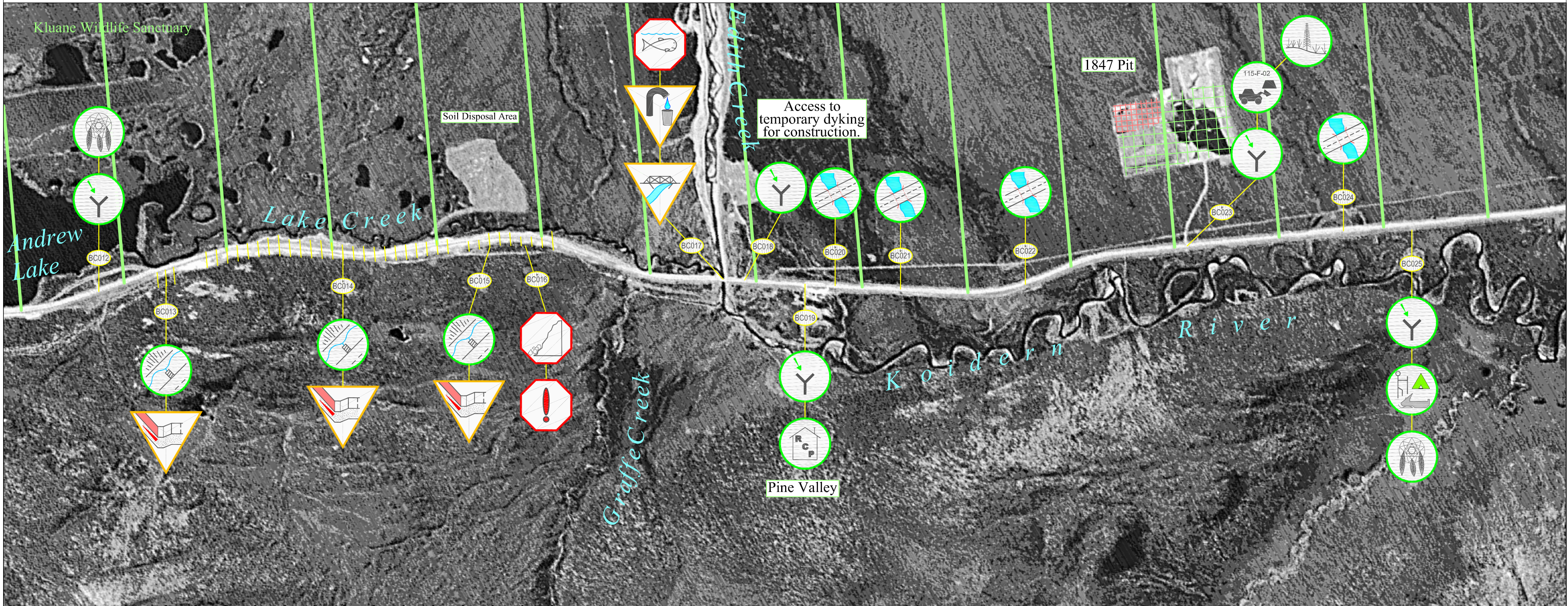


# Beaver Creek Highway Maintenance Section: Sheet 48 (km 1840 to km 1850)



Highway Feature		Engineering Component		Environmental Component		Maintenance Advisory System		Section Specific Features	Notes:
AC = Access Points	RC = Rock Cuts/ Slide Areas	UC = Utility encroachment /Crossing	US = User Safety (eg. Avalanche / Wildlife Area)	EC = Erosion Control	CU = Cultural Use	WQ = Water Quality	Notification	Mineral Claims	<p>Geotextile under embankment at: BC014, 015.                      BC014: Discontinuous geotextile on both sides.                      BC016: Remove fallen rock to Edith Creek bank when cleaning out ditch.                      Geotextile under bed, inlet rip-rap, and outlet channels at: BC020, 021, 022, 024.                      BC023: Contains treated hydrocarbon contaminated soil.</p>
BP = Borrow Pits	PO = Pull Out	IS = Insulated Structure	IC = Icing Control	ECP = Erosion Control Protected by Geotextile	HTG = Heritage	REC = Recreation	Caution *	Soil Remediation Advisory	
DNG = Drainage (Roadside Ditch, Run-off Control Structures, etc.)	CV = Culvert	RS = Road Surface	RV = Revegetation (Existing Material, Revegetating & Reclaimed Areas)	WM = Waste Management	BL = Boat Launch	WH = Wildlife and/or Wildlife Habitat	Alert *	Revegetation Advisory	
Q = Quarries	MP = Multiplate	GS = Granular Source / Stockpile	SF = Snow Fence (drifting control structure)	OH = Outhouse	FH = Fish and/or Fish Habitat	SV = Scenic Viewing	Road Surface Advisory	Caution Bar	
RA = Rest Area	BR = Bridge	WX = Wildlife Crossing	SR = Snow Removal	GT = Geotextile / Granular Filters	RCP = Residential / Commercial Property				

