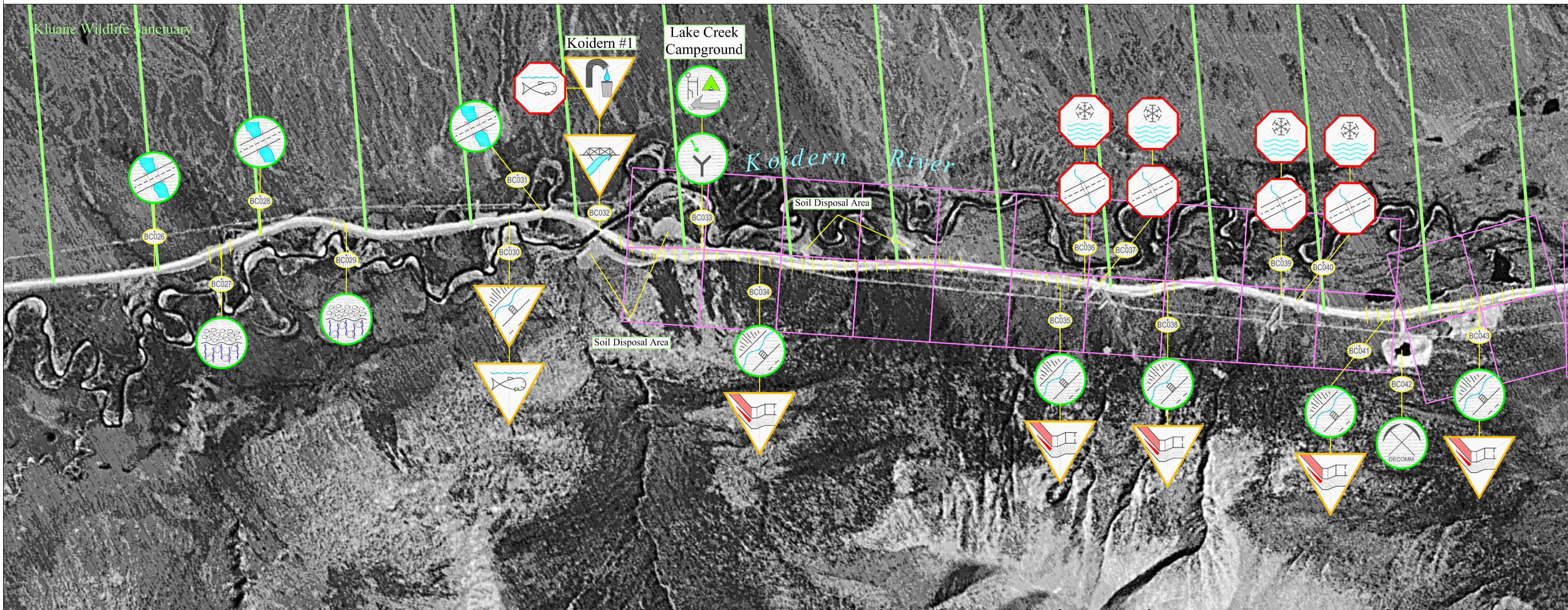


Beaver Creek Highway Maintenance Section: Sheet 49 (km 1849 to km 1858)



| Highway Feature | | Engineering Component | | Environmental Component | | Maintenance Advisory System | | Section Specific Features | Notes: | |
|---|--|--|--|---|---|--|--|--|--------|--|
| <ul style="list-style-type: none"> AC = Access Points BP = Borrow Pits DNG = Drainage (Roadside Ditch, Run-off Control Structures, etc.) Q = Quarries RA = Rest Area | <ul style="list-style-type: none"> RC = Rock Cuts/ Slide Areas PO = Pull Out CV = Culvert MP = Multiplate BR = Bridge | <ul style="list-style-type: none"> UC = Utility encroachment /Crossing IS = Insulated Structure RS = Road Surface GS = Granular Source / Stockpile WX = Wildlife Crossing | <ul style="list-style-type: none"> US = User Safety (eg. Avalanche / Wildlife Area) IC = Icing Control RV = Revegetation (Existing Material, Revegetating & Reclaimed Areas) SF = Snow Fence (drifting control structure) SR = Snow Removal | <ul style="list-style-type: none"> EC = Erosion Control ECP = Erosion Control Protected by Geotextile WM = Waste Management OH = Outhouse GT = Geotextile / Granular Filters | <ul style="list-style-type: none"> CU = Cultural Use HTG = Heritage BL = Boat Launch FH = Fish and/or Fish Habitat RCP = Residential / Commercial Property | <ul style="list-style-type: none"> WQ = Water Quality REC = Recreation WH = Wildlife and/or Wildlife Habitat SV = Scenic Viewing | <ul style="list-style-type: none"> Notification Caution * Alert * | <ul style="list-style-type: none"> Soil Remediation Advisory Revegetation Advisory Road Surface Advisory Caution Bar | | <ul style="list-style-type: none"> Mineral Claims |