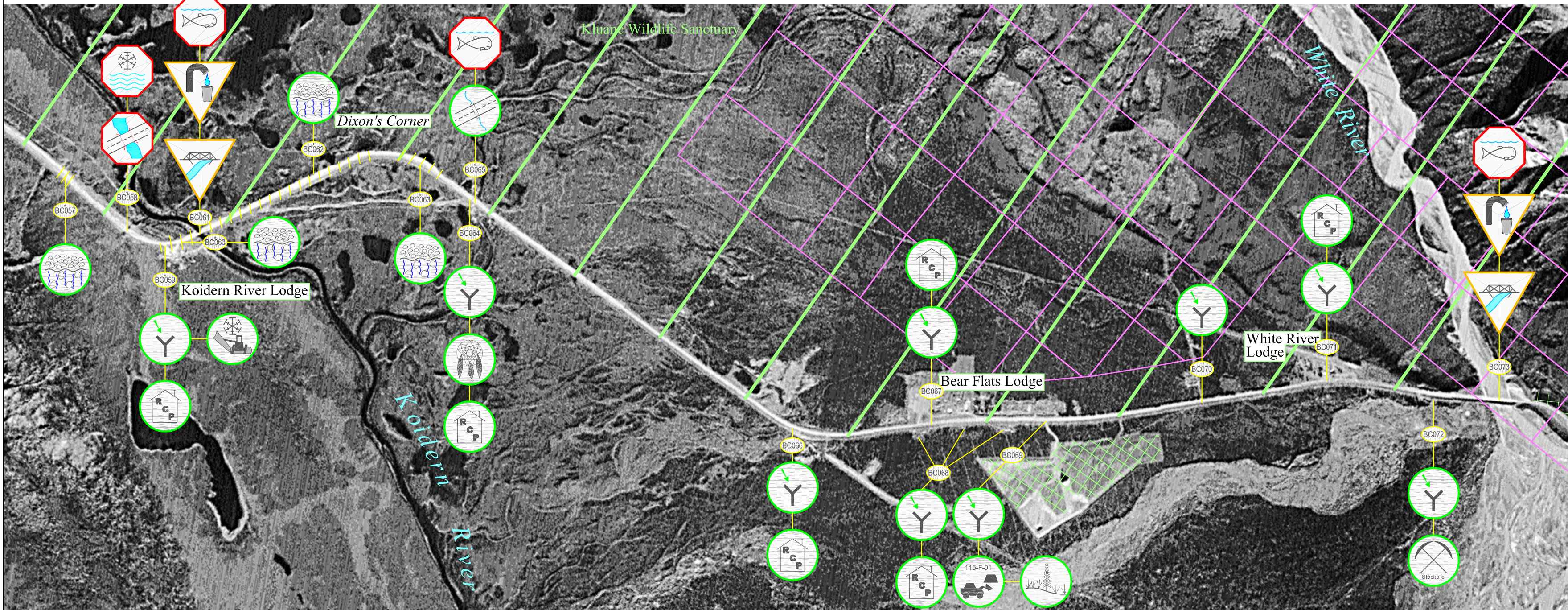


# Beaver Creek Highway Maintenance Section: Sheet 52 (km 1871 to km 1881)



Highway Feature		Engineering Component		Environmental Component		Maintenance Advisory System		Section Specific Features	Notes: BC057, 060, 062, 063: Geotextile under embankment. BC058: Engineered icing control design feature constructed, do not disturb; geotextile under bed, inlet & outlet channels. BC059: Auxilliary lane taper. BC061: North end of Koidern bridge structure subject to movement due to permafrost. BC062, 063: Surface distortions due to differential settling. BC065: Window for instream work 06/30 - 03/30 annually. BC073: Monitor cut slope North of White River bridge for erosion.
<ul style="list-style-type: none"> <li>AC = Access Points</li> <li>BP = Borrow Pits</li> <li>DNG = Drainage (Roadside Ditch, Run-off Control Structures, etc.)</li> <li>Q = Quarries</li> <li>RA = Rest Area</li> </ul>	<ul style="list-style-type: none"> <li>RC = Rock Cuts/ Slide Areas</li> <li>PO = Pull Out</li> <li>CV = Culvert</li> <li>MP = Multiplate</li> <li>BR = Bridge</li> </ul>	<ul style="list-style-type: none"> <li>UC = Utility encroachment /Crossing</li> <li>IS = Insulated Structure</li> <li>RS = Road Surface</li> <li>GS = Granular Source / Stockpile</li> <li>WX = Wildlife Crossing</li> </ul>	<ul style="list-style-type: none"> <li>US = User Safety (eg. Avalanche / Wildlife Area)</li> <li>IC = Icing Control</li> <li>RV = Revegetation (Existing Material, Revegetating &amp; Reclaimed Areas)</li> <li>SF = Snow Fence (drifting control structure)</li> <li>SR = Snow Removal</li> </ul>	<ul style="list-style-type: none"> <li>EC = Erosion Control</li> <li>ECP = Erosion Control Protected by Geotextile</li> <li>WM = Waste Management</li> <li>OH = Outhouse</li> <li>GT = Geotextile / Granular Filters</li> </ul>	<ul style="list-style-type: none"> <li>CU = Cultural Use</li> <li>HTG = Heritage</li> <li>BL = Boat Launch</li> <li>FH = Fish and/or Fish Habitat</li> <li>RCP = Residential / Commercial Property</li> </ul>	<ul style="list-style-type: none"> <li>WQ = Water Quality</li> <li>REC = Recreation</li> <li>WH = Wildlife and/or Wildlife Habitat</li> <li>SV = Scenic Viewing</li> </ul>	<ul style="list-style-type: none"> <li>Notification</li> <li>Caution *</li> <li>Alert *</li> <li>Soil Remediation Advisory</li> <li>Revegetation Advisory</li> <li>Road Surface Advisory</li> <li>Caution Bar</li> </ul>	<ul style="list-style-type: none"> <li>Mineral Claims</li> </ul>	



Scale 1:20 000