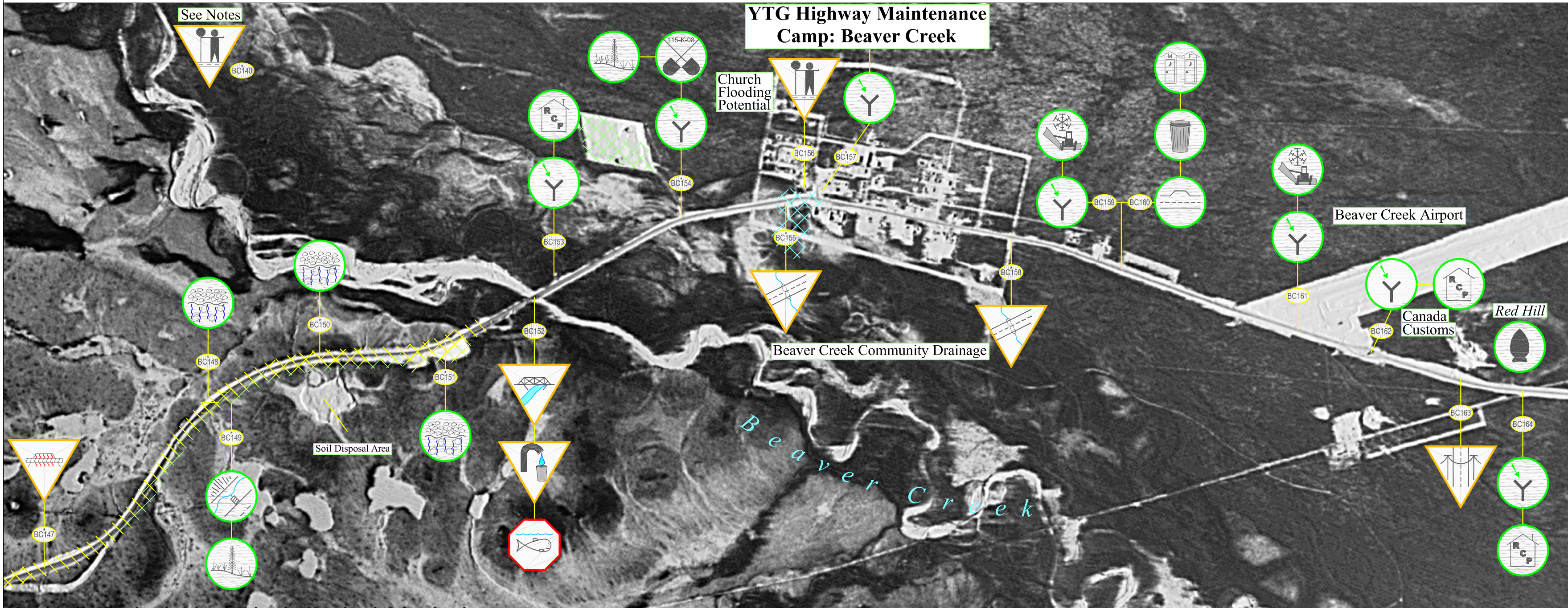


Beaver Creek Highway Maintenance Section: Sheet 59 (km 1928 to km 1939)



Highway Feature		Engineering Component		Environmental Component		Maintenance Advisory System		Section Specific Features	Notes:
AC = Access Points	RC = Rock Cuts/ Slide Areas	UC = Utility encroachment /Crossing	US = User Safety (eg. Avalanche / Wildlife Area)	EC = Erosion Control	CU = Cultural Use	WQ = Water Quality	Notification	Mineral Claims	<p>BC140: Surface distortions due to differential settling.</p> <p>BC147: Permafrost monitoring, thermistors installed.</p> <p>BC149: Revegetate, no clover between White River and Beaver Creek, will attract caribou.</p> <p>BC154: Access provides flood protection.</p> <p>BC157: Thermistor string, manual reading.</p> <p>BC155,158: Maintain culverts' integrity for Beaver Creek drainage.</p> <p>Geotextile under embankment at: BC148, 150, 151.</p> <p>-Maintain community access.</p> <p>-Maintain community trail.</p>
BP = Borrow Pits	PO = Pull Out	IS = Insulated Structure	IC = Icing Control	ECP = Erosion Control Protected by Geotextile	HTG = Heritage	REC = Recreation	Caution *	Soil Remediation Advisory	
DNG = Drainage (Roadside Ditch, Run-off Control Structures, etc.)	CV = Culvert	RS = Road Surface	RV = Revegetation (Existing Material, Revegetating & Reclaimed Areas)	WM = Waste Management	BL = Boat Launch	WH = Wildlife and/or Wildlife Habitat	Alert *	Revegetation Advisory	
Q = Quarries	MP = Multiplate	GS = Granular Source / Stockpile	SF = Snow Fence (drifting control structure)	OH = Outhouse	FH = Fish and/or Fish Habitat	SV = Scenic Viewing	Road Surface Advisory	Caution Bar	
RA = Rest Area	BR = Bridge	WX = Wildlife Crossing	SR = Snow Removal	GT = Geotextile / Granular Filters	RCP = Residential / Commercial Property				