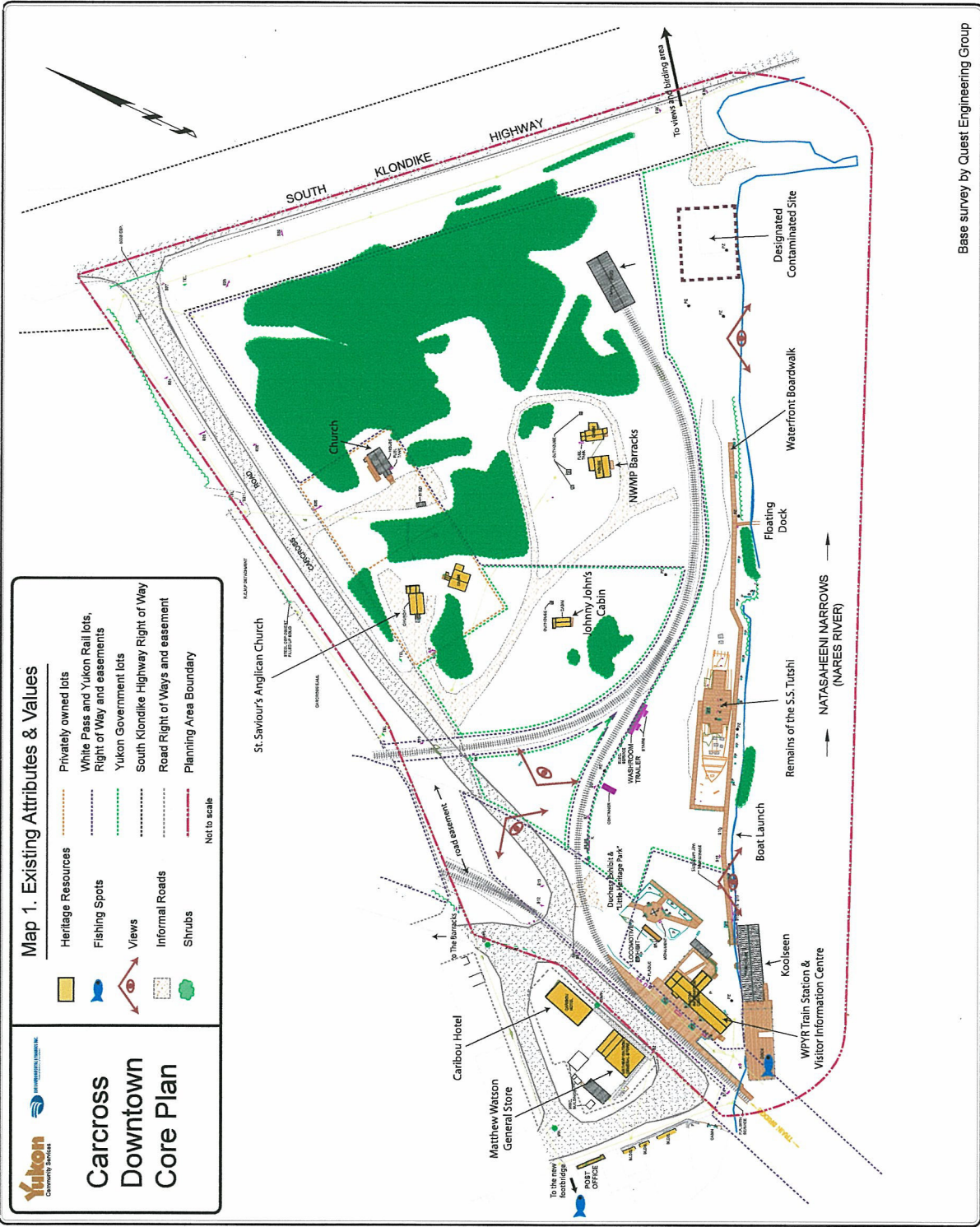




# Carcross Downtown Core Plan

## Map 1. Existing Attributes & Values

- |                    |  |
|--------------------|--|
| Heritage Resources | Privately owned lots                                       |
| Fishing Spots      | White Pass and Yukon Rail lots, Right of Way and easements |
| Views              | Yukon Government lots                                      |
| Informal Roads     | South Klondike Highway Right of Way                        |
| Shrubs             | Road Right of Ways and easement                            |
|                    | Planning Area Boundary                                     |
- Not to scale

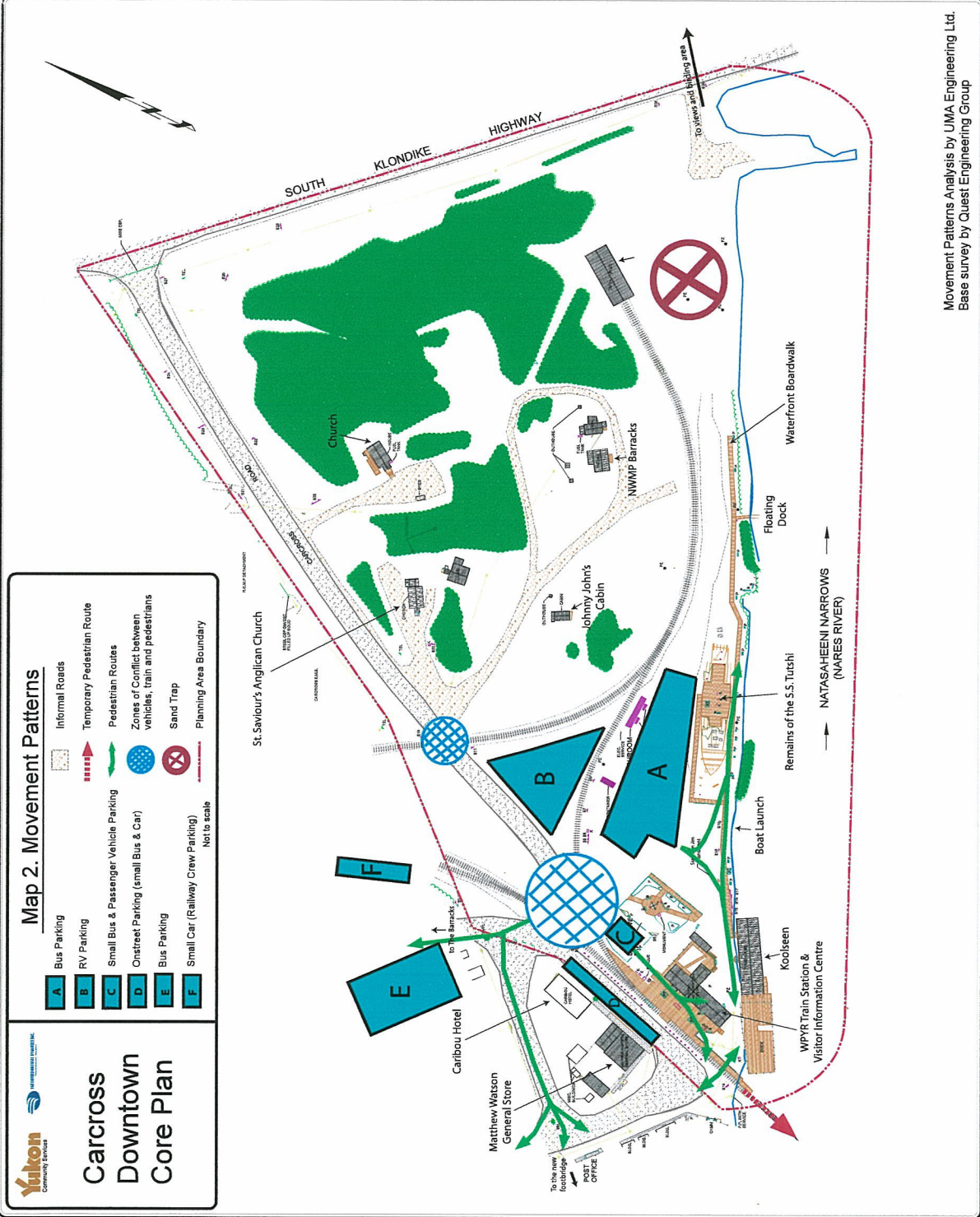


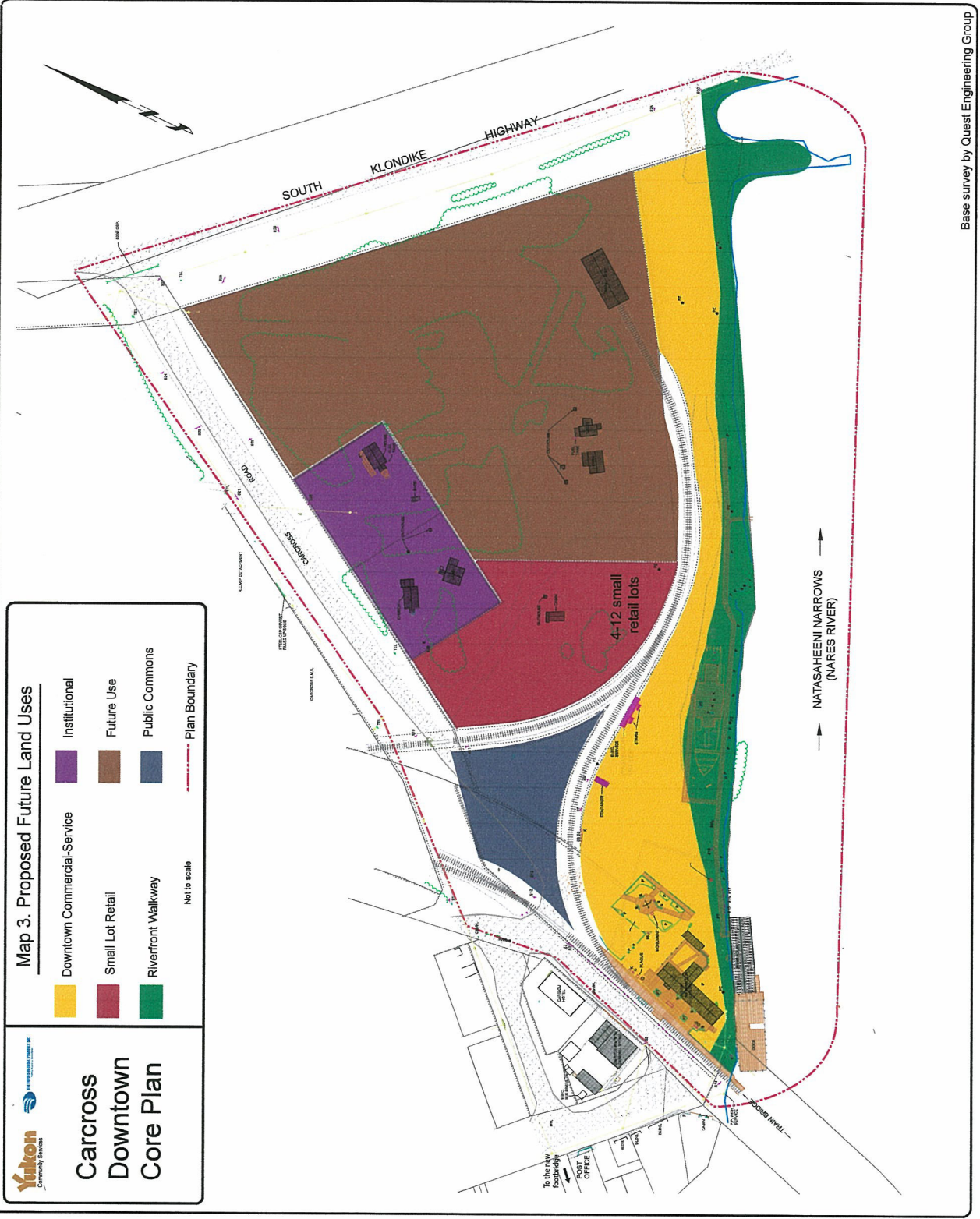


# Carcross Downtown Core Plan

## Map 2. Movement Patterns

- A** Bus Parking
  - B** RV Parking
  - C** Small Bus & Passenger Vehicle Parking
  - D** Onstreet Parking (small Bus & Car)
  - E** Bus Parking
  - F** Small Car (Railway Crew Parking) Not to scale
- Informal Roads
  - Temporary Pedestrian Route
  - Pedestrian Routes
  - Zones of Conflict between Vehicles, train and pedestrians
  - Sand Trap
  - Planning Area Boundary





**Map 3. Proposed Future Land Uses**

**Yukon**  
Community Services








**Carcross  
Downtown  
Core Plan**

- Downtown Commercial-Service
  - Institutional
  - Future Use
  - Riverfront Walkway
  - Public Commons
  - Plan Boundary
- Not to scale

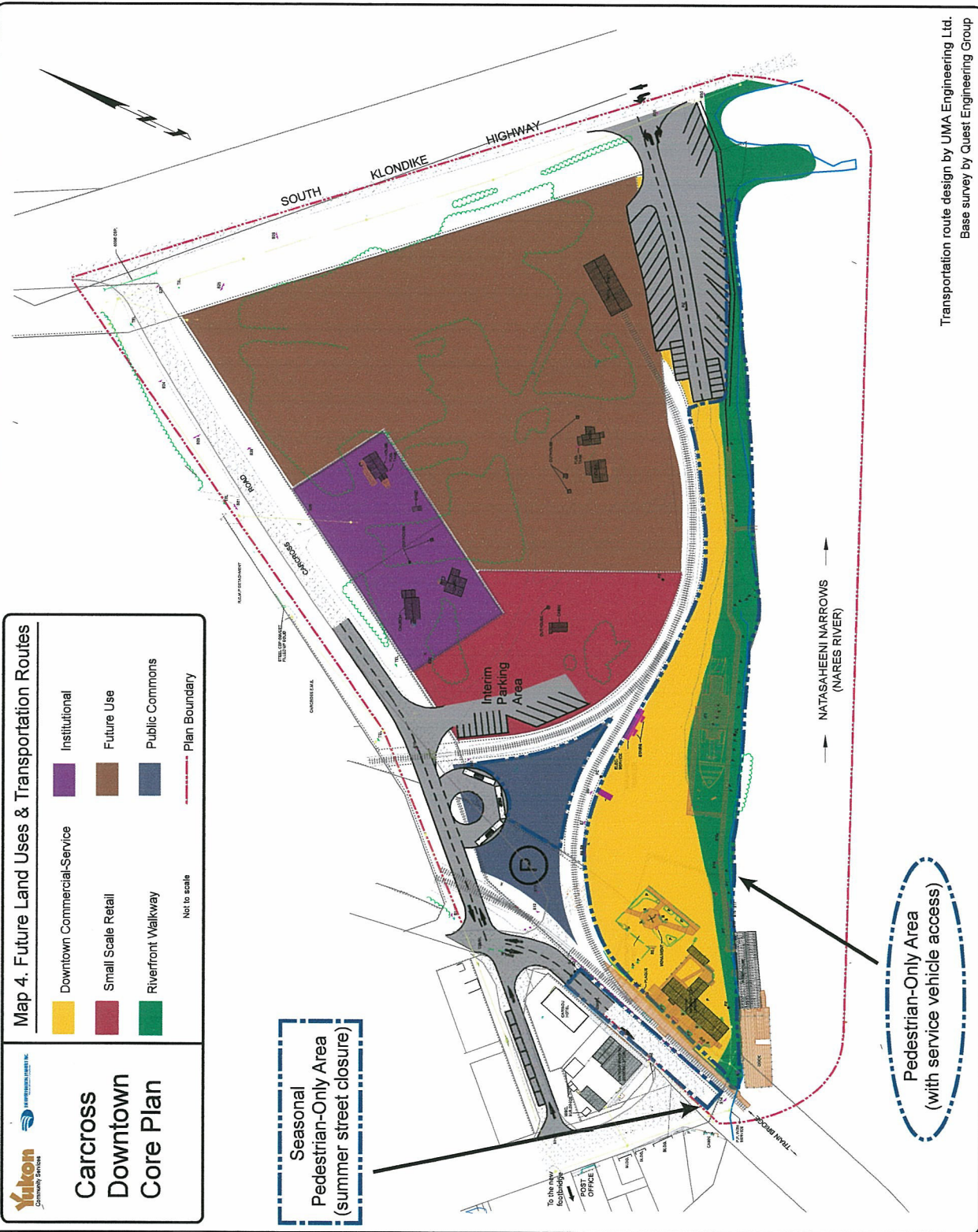
**Yukon**  
Community Services

**Carcross  
Downtown  
Core Plan**

**Map 4. Future Land Uses & Transportation Routes**

	Downtown Commercial-Service		Institutional
	Small Scale Retail		Future Use
	Riverfront Walkway		Public Commons
			Plan Boundary

Not to scale



Transportation route design by UMA Engineering Ltd.  
Base survey by Quest Engineering Group

