



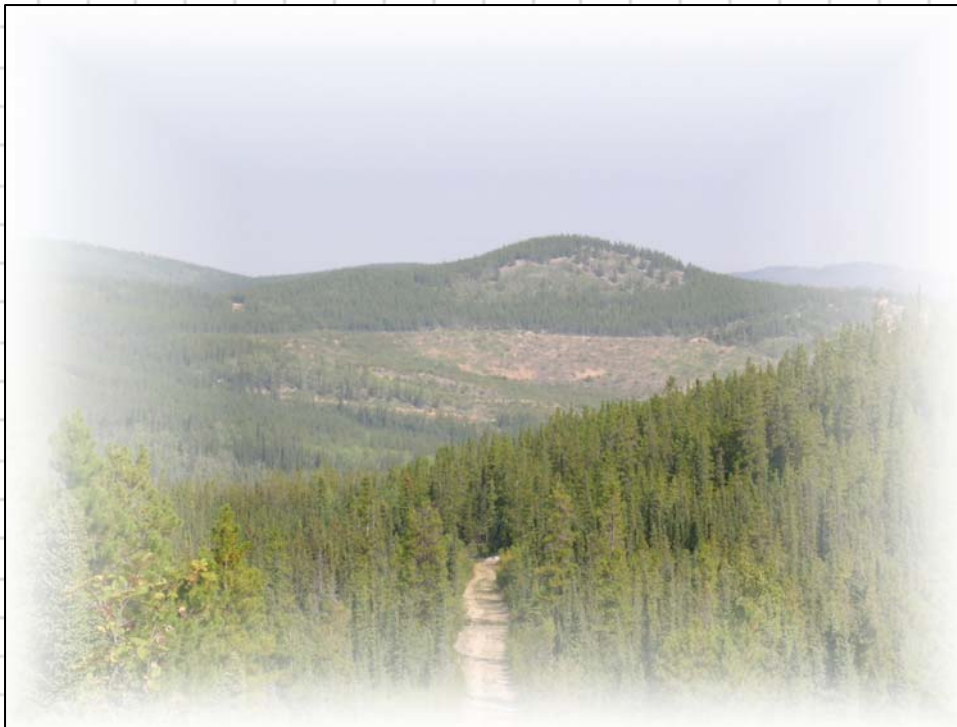
Western Copper Corporation

Project Proposal – Revision No. 2

Carmacks Copper Project

Yukon Territory

**Volume III
Supporting Appendices F - Q**



February 2007

Prepared by





Western Copper Corporation

PROJECT PROPOSAL

CARMACKS COPPER PROJECT YUKON TERRITORY

Volume III – Supporting Appendices

- Appendix F Conceptual Closure and Reclamation Plan (Updated 2006)*
- Appendix F1 Operational Treatment System (August 2006)*
- Appendix G Summary of Results from the Waste Rock Characterization Program
(Hallam Knight Piesold, IEE Addendum No.1, June 1995)
- Appendix G1 Waste Rock Storage Area Evaluation and Detailed Design Report (1997)*
- Appendix G2 EBA Engineering Consultants Ltd., Preliminary Review of Existing
Information – Waste Rock Dump (April 2006)*
- Appendix G3 EBA Engineering Consultants Ltd., Response to Review Questions –
Waste Rock Storage Area (May 2006)*
- Appendix G4 – Provisional Assessment of ARD Potential of Selected Rock Samples,
Carmacks Copper Project (2006)*
- Appendix H1 Summary of Flow Measurements Recorded in June and July 2006*
- Appendix H2 Baseline Water and Sediment Quality Data 1989 - 2006*
- Appendix H3 Environmental Monitoring Program Update and Data Summary –
Revision #1 (January 2006)*
- Appendix H4 Williams and Nancy Lee Creek Sample Station Photographs*

Volume III – Supporting Appendices (Cont'd)

- Appendix H5 Wildlife Update (August 2006)*
- Appendix H6 Vegetation Information Update (July 2006)*
- Appendix H7 Land Tenure Adjacent to Freegold Road*
- Appendix I Summary Consultation Tables (May – October 2006)*
- Appendix J Western Copper Newsletter and Posters for Consultation (2006)*
- Appendix K Updated Summary of the Assessment of Potential Environmental Effects, Proposed Mitigation Measures and Significance Assessment (2006)*
- Appendix L Spill Contingencies and Emergency Response Plan
- Appendix M Qualitative Risk Assessment Worksheets
- Appendix N Information Sheet for Quartz Mining Undertakings
- Appendix O Navigable Waters Letters on Navigability of Merrice & Williams Creek Crossings*
- Appendix P Carmacks Copper Project Socio-economic Effects Assessment (February 2007)*
- Appendix Q Williams Creek Geochemistry (September 2006)*