



**Western Copper  
Corporation**

**Project Proposal**  
**Carmacks Copper Project**  
**Yukon Territory**

---

---

**Appendix A**

**Detailed Project Design Drawings**

---

---

## Appendix A – Detailed Project Design Drawings

The original drawings in Appendix A are from Kilborn, and Knight Piésold, and have been modified/revised slightly from their original format. The original engineering design content for the most part has not been modified.

Modifications to the original drawings include:

- Removing grid lines;
- Removing the water storage area which is no longer included in this project;
- Removing old trails;
- Removing mineral claims;
- Changing the original AutoCAD pen settings;
- Replacing the original title block with the Access Consulting Group title block;
- and
- All drawings are marked “not for construction”.

### List of Drawings

ACG-WS-01.000	Aerial Photo of Carmacks Copper Project Area
100-13-05	Roads Sections and Details Sheet 1 of 2
100-13-06	Sections and Details Sheet 2 of 2
100-13-08	Overall Site Plan Ultimate
100-13-09	Plantsite Layout Plan
100-13-14	Camp Layout Plan
100-13-20	Fresh Water Booster Pumphouse Plan and Sections
100-13-21	Water Distribution Pumphouse Plan, Sections & Details
100-13-23	Fuel Storage, Diesel Generators Plantsite Plan, Sections, Details
100-13-24	Fuel Storage Service Complex Plan, Sections & Details
100-13-27	Water Supply Diagram
100-13-28	Water Distribution Diagram
100-13-29	Water Supply Pipeline Plan and Profile
100-13-45	Overall Site Plan Year 2
100-13-46	Project Site Plan Earthworks Sheet 1
100-13-60	Overall Site Conceptual Reclamation/Closure Plan
200-03-01	Crushing and Screening Flowsheet #1
400-03-03	Solvent Extraction & Stripping Flowsheet #3

400-03-04	Flotation & Organic Treatment Flowsheet #4
400-03-05	Electrowinning Flowsheet #5
400-03-06	Reagents Flowsheet #6
400-03-07	Ancillary Facilities Flowsheet #7
400-03-08	Water and Air Flowsheet #8
400-03-12	Sulphuric Acid Plant Flowsheet #10
400-03-13	Sulphuric Acid Plant Stream Distribution Diagram
400-10-06	Recovery Overall General Arrangement Plan
400-10-07	Solvent Extraction General Arrangement Plan
400-10-09	Solvent Extraction General Arrangement Sections
400-10-11	Electrowinning Building Plan
400-10-16	Sulphuric Acid Plant Site Layout
700-03-02	Leaching Flowsheet #2
800-05-13	Open Pit Plan Pre-Production Stripping
800-05-14	Open Pit Plan End of Year 2
800-05-15	Open Pit Plan End of Year 4
800-05-16	Open Pit Plan End of Year 6
800-05-17	Open Pit Plan End of Year 8 Ultimate Pit
1784_000	General Arrangement
1784_100	Site Investigations Plan
1784_101	Heap Leach Pad Geologic Sections Sheet 1 of 2
1784_102	Heap Leach Pad Geologic Sections Sheet 2 of 2
1784_103	Waste Rock Storage Geologic Sections
1784.301	Waste Rock Storage Area Foundation Preparation Plan
1784.302	Waste Rock Storage Area Sections and Details
1785.202	Heap Leach Facility Overall Rough Grading Plan
1785.215	Events Pond Foundation Drainage and Grading Plan
1785.216	Events Pond Sections and Details Sheet 1 of 2
1785.217	Events Pond Sections and Details Sheet 2 of 2
1785.218	Sediment Control Pond Plan, Sections and Details
ACG-WS-01.001	Conceptual Heap Leach Facility Closure



**Project Description  
& Environmental  
Assessment Report**

**Carmacks Copper  
Project  
Yukon Territory**



**Aerial Photo of Carmacks  
Copper Project Area**

Drawing Number:  
**ACG-WS-01.000**

Scale (units Meters):  
1:30 000 (Appx)



Drawn by: HD      Checked by: DC  
Date: Feb. 1, 2005

# Project Description & Environmental Assessment Report

## Carmacks Copper Project Yukon Territory



Note: Drawing is for illustrative purposes only, NOT FOR CONSTRUCTION

Original drawing from Kilborn, The engineering data on this drawing is solely for the purpose and project for which this drawing is issued. "Roads Sections and Details Sheet 1 of 2", Drawing #100-13-05

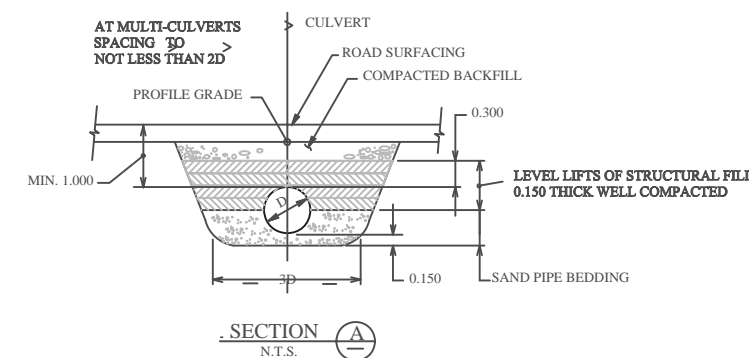
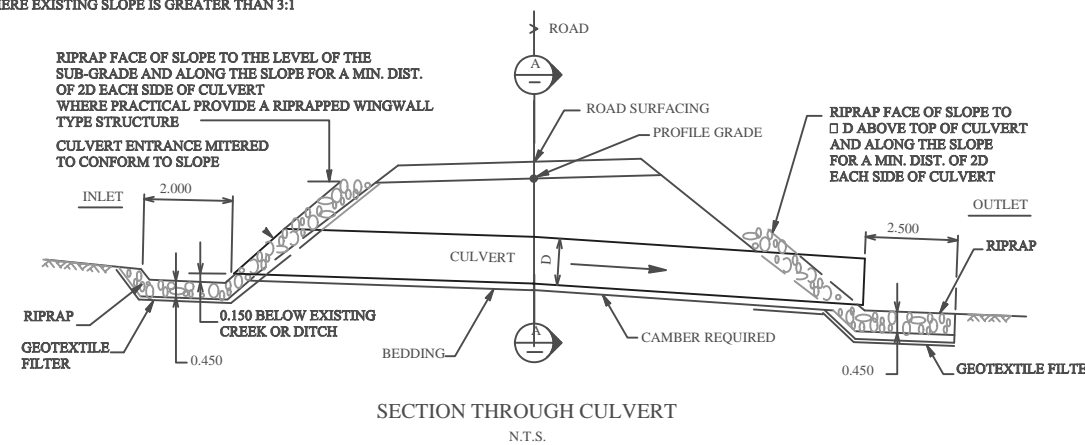
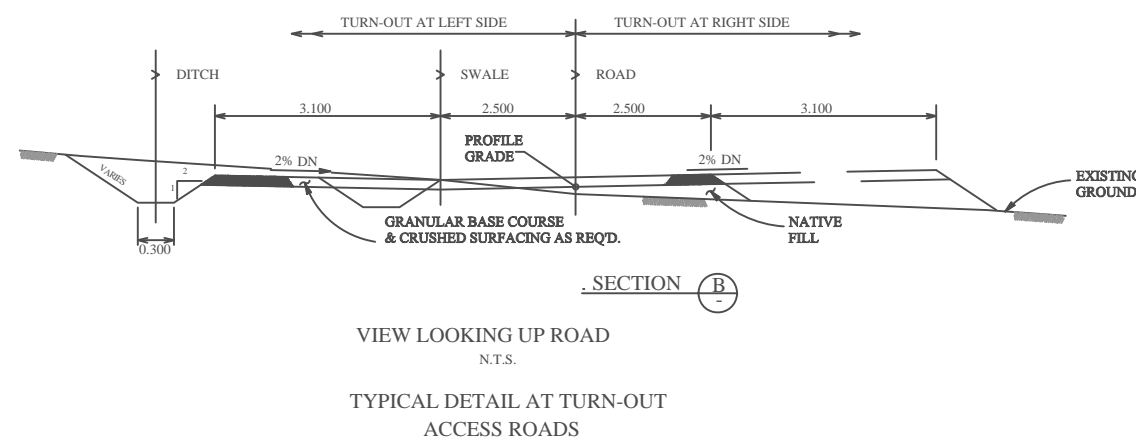
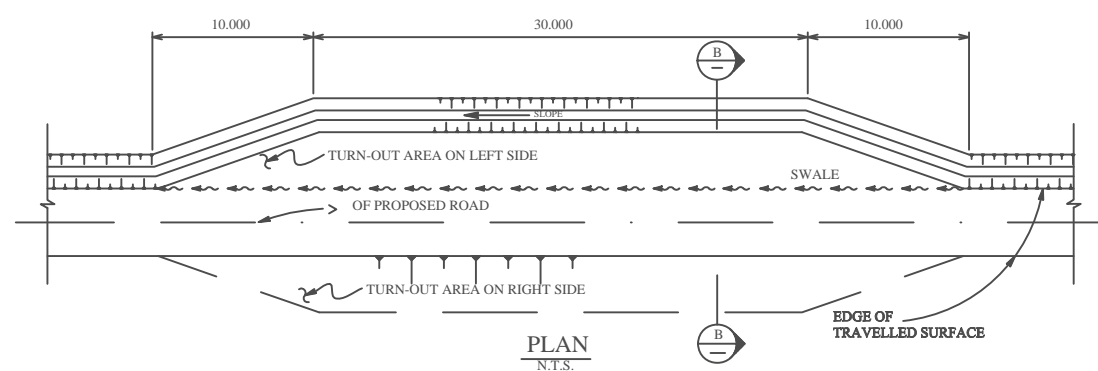
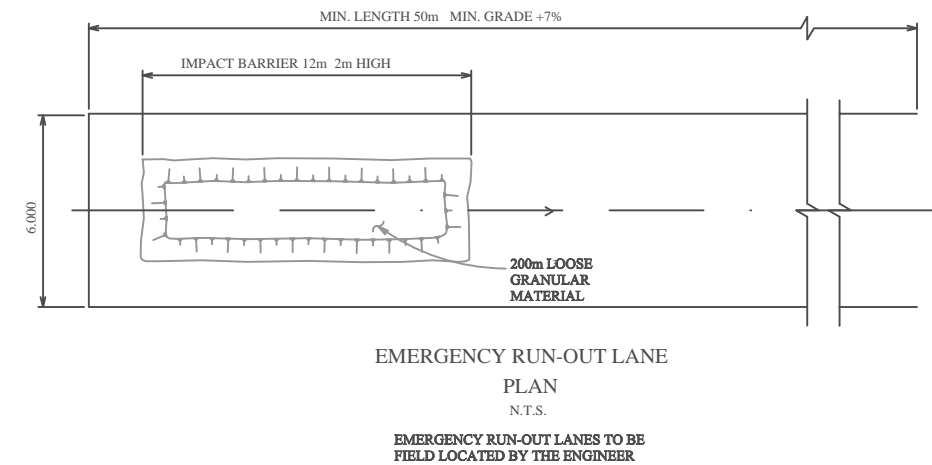
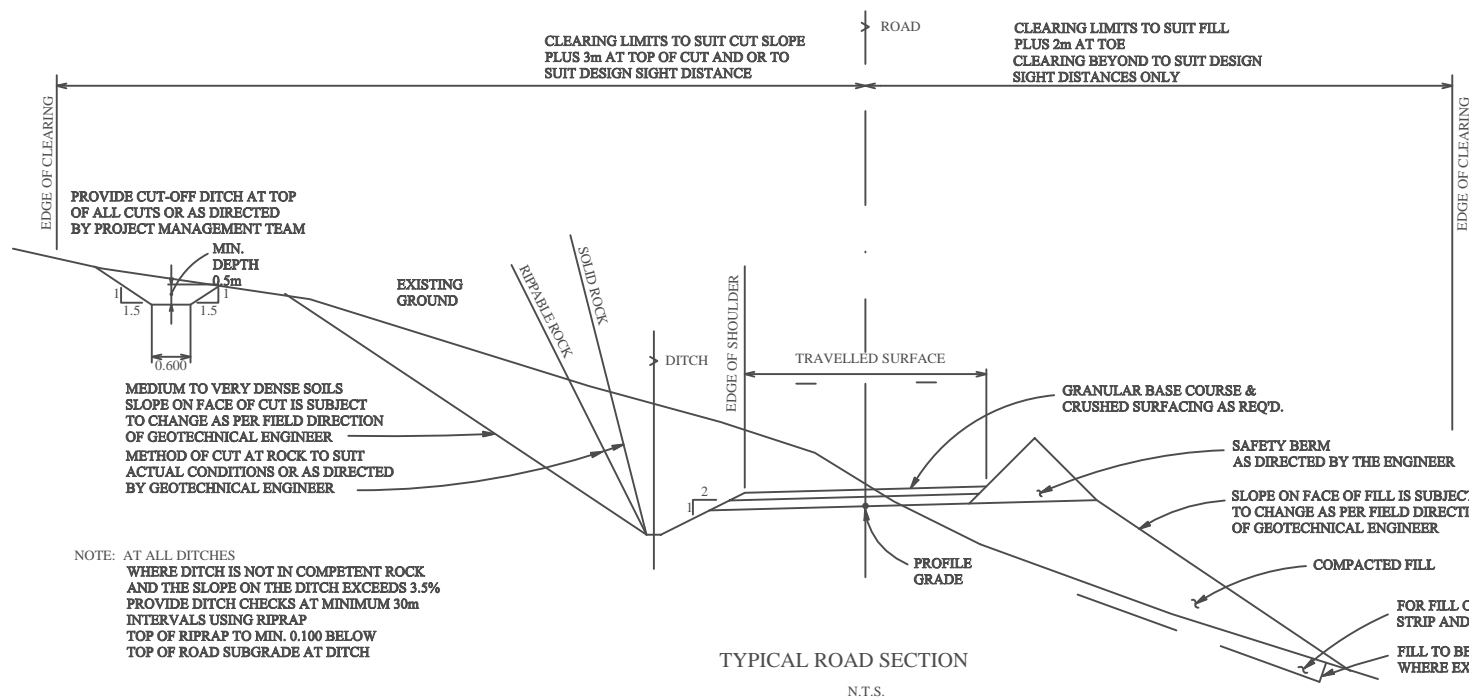
### Roads Sections and Details Sheet 1 of 2

Drawing Number:  
100-13-05



Revised by: HD      Checked by: DDC

Date: Feb. 1, 2005



NOTES:  
1. DIMENSIONS ARE IN METRES

**Project Description  
& Environmental  
Assessment Report**

**Carmacks Copper  
Project  
Yukon Territory**



Note: Drawing is for illustrative purposes only, NOT FOR CONSTRUCTION

Original drawing from Kilborn, The engineering data on this drawing is solely for the purpose and project for which this drawing is issued. "Roads Sections and Details Sheet 2 of 2", Drawing #100-13-06

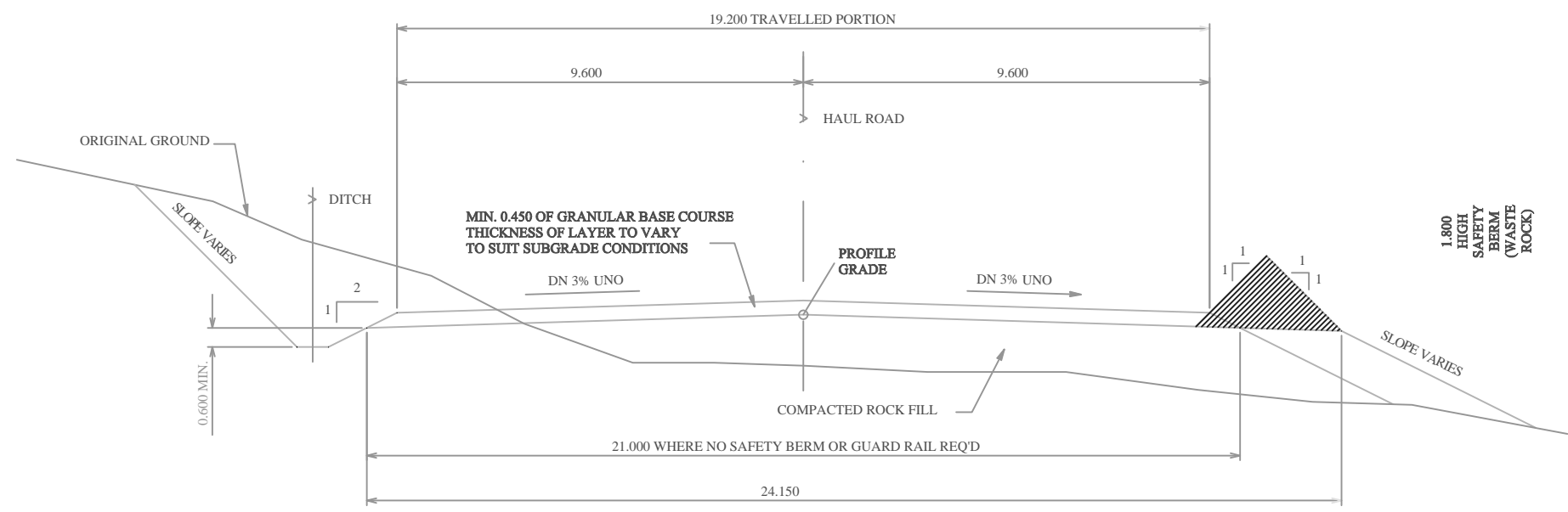
**Roads Sections and  
Details Sheet 2 of 2**

Drawing Number:  
**100-13-06**

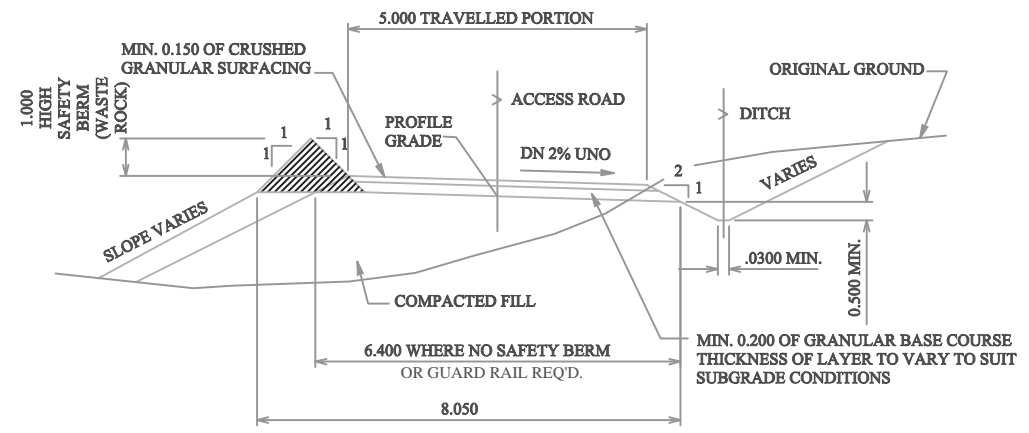


Revised by: HD      Checked by: DDC

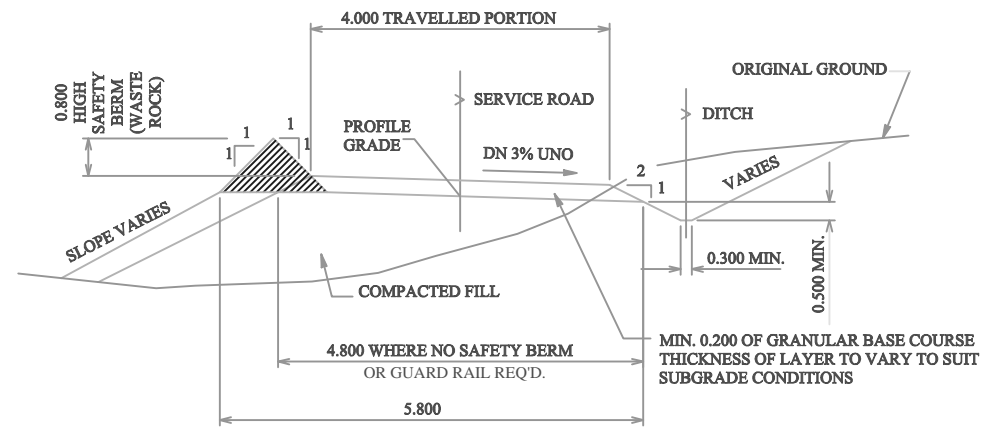
Date: Feb. 1, 2005



**HAUL ROAD SECTION**  
N.T.S.



**ACCESS ROAD SECTION**  
N.T.S.



**SERVICE ROAD SECTION**  
N.T.S.

NOTES:  
1. DIMENSIONS ARE IN METRES

**Project Description  
& Environmental  
Assessment Report**

**Carmacks Copper  
Project  
Yukon Territory**



Note: Drawing is for illustrative purposes only,  
NOT FOR CONSTRUCTION

Original drawing from Kilborn,  
The engineering data on this drawing is solely for the  
purpose and project for which this drawing is issued.  
"Overall Site Plan Ultimate",  
Drawing #100-13-08 Rev A

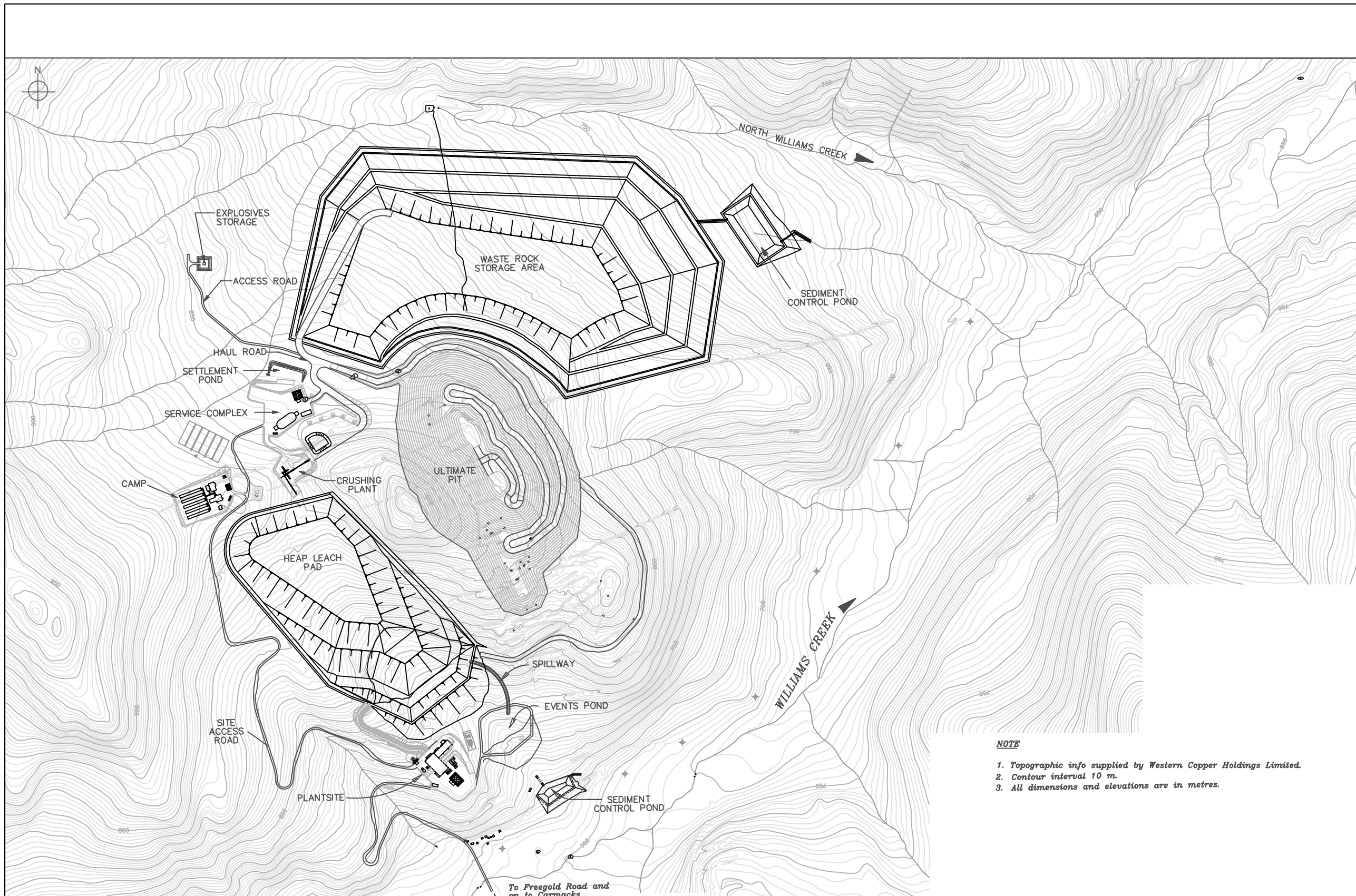
**Overall Site Plan  
Ultimate**

Drawing Number:  
**100-13-08**

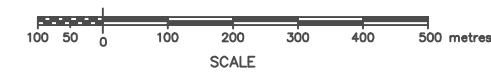


Revised by: HD      Checked by: DDC

Date: Feb. 1, 2005



**NOTE**  
 1. Topographic info supplied by Western Copper Holdings Limited.  
 2. Contour interval 10 m.  
 3. All dimensions and elevations are in metres.



WELL (Typ)

**Project Description  
& Environmental  
Assessment Report**

**Carmacks Copper  
Project  
Yukon Territory**



Note: Drawing is for illustrative purposes only,  
NOT FOR CONSTRUCTION

Original drawing from Kilborn,  
The engineering data on this drawing is solely for the  
purpose and project for which this drawing is issued.  
"Plantsite Layout Plan",  
Drawing #100-13-09 Rev B

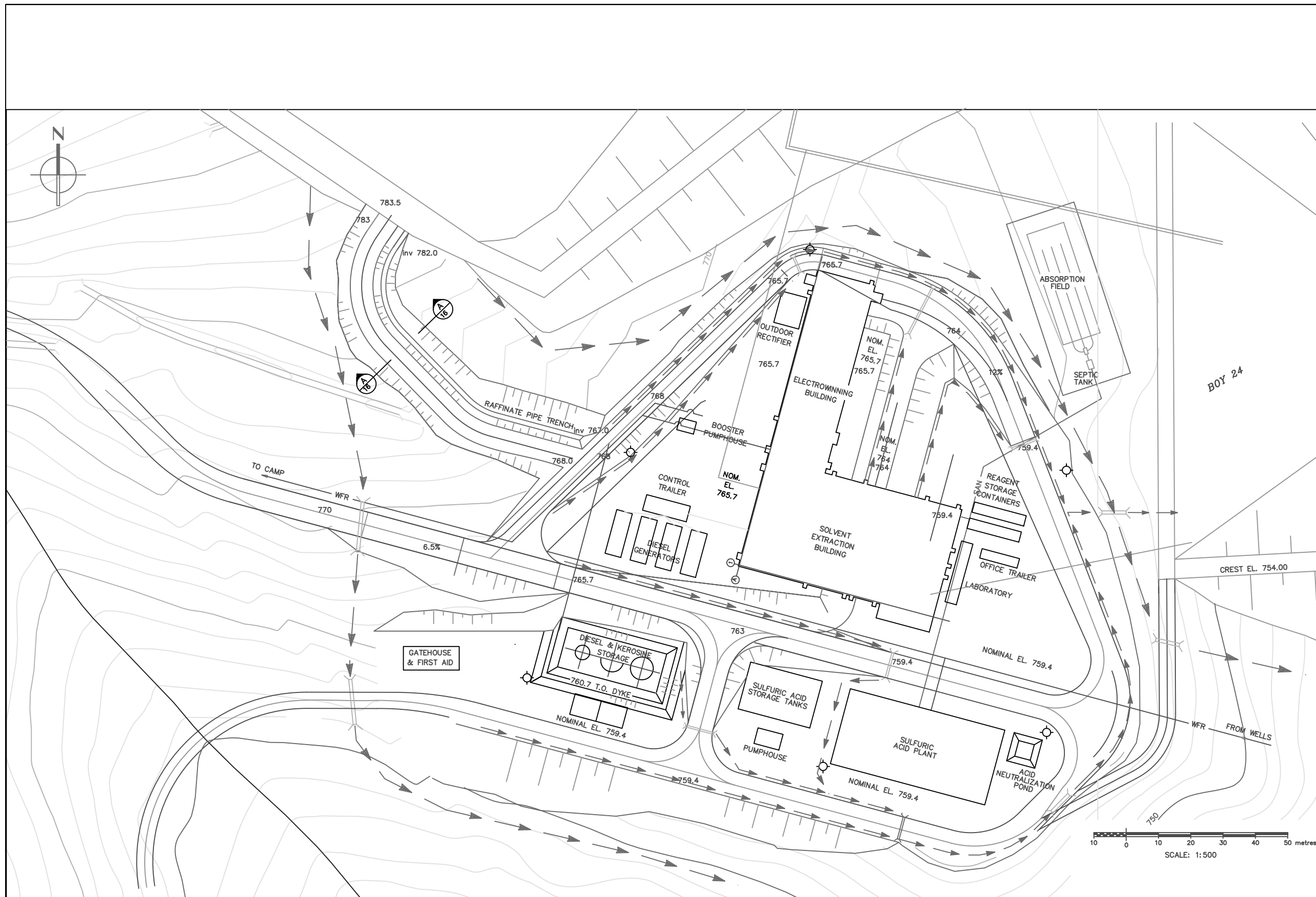
**Plantsite Layout Plan**

Drawing Number:  
**100-13-09**



Revised by: HD      Checked by: DDC

Date: Feb. 1, 2005





**Project Description  
& Environmental  
Assessment Report**

**Carmacks Copper  
Project  
Yukon Territory**



Note: Drawing is for illustrative purposes only, NOT FOR CONSTRUCTION

Original drawing from Kilborn, The engineering data on this drawing is solely for the purpose and project for which this drawing is issued. "Camp Layout Plan", Drawing #100-13-14 Rev B

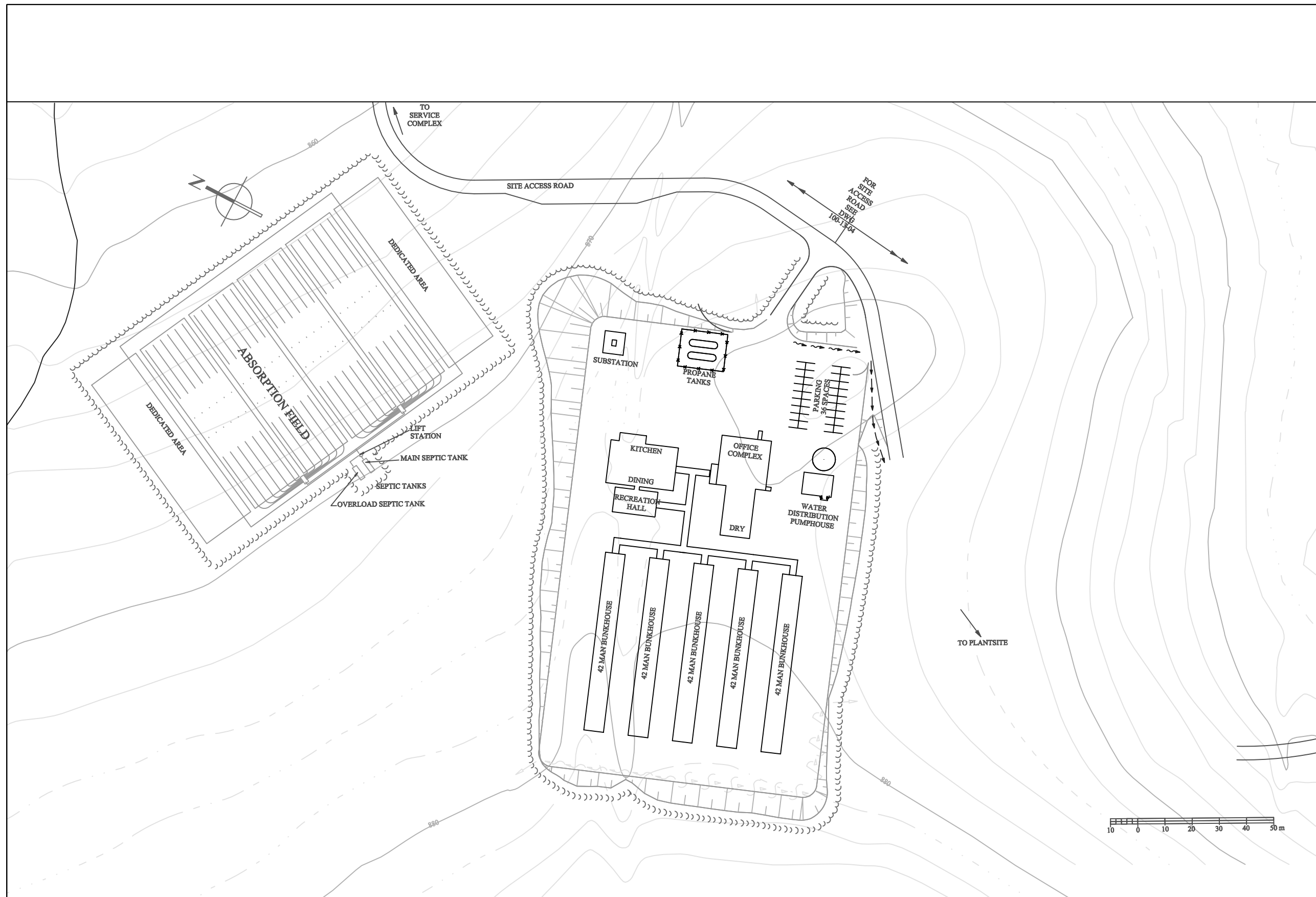
**Camp Layout Plan**

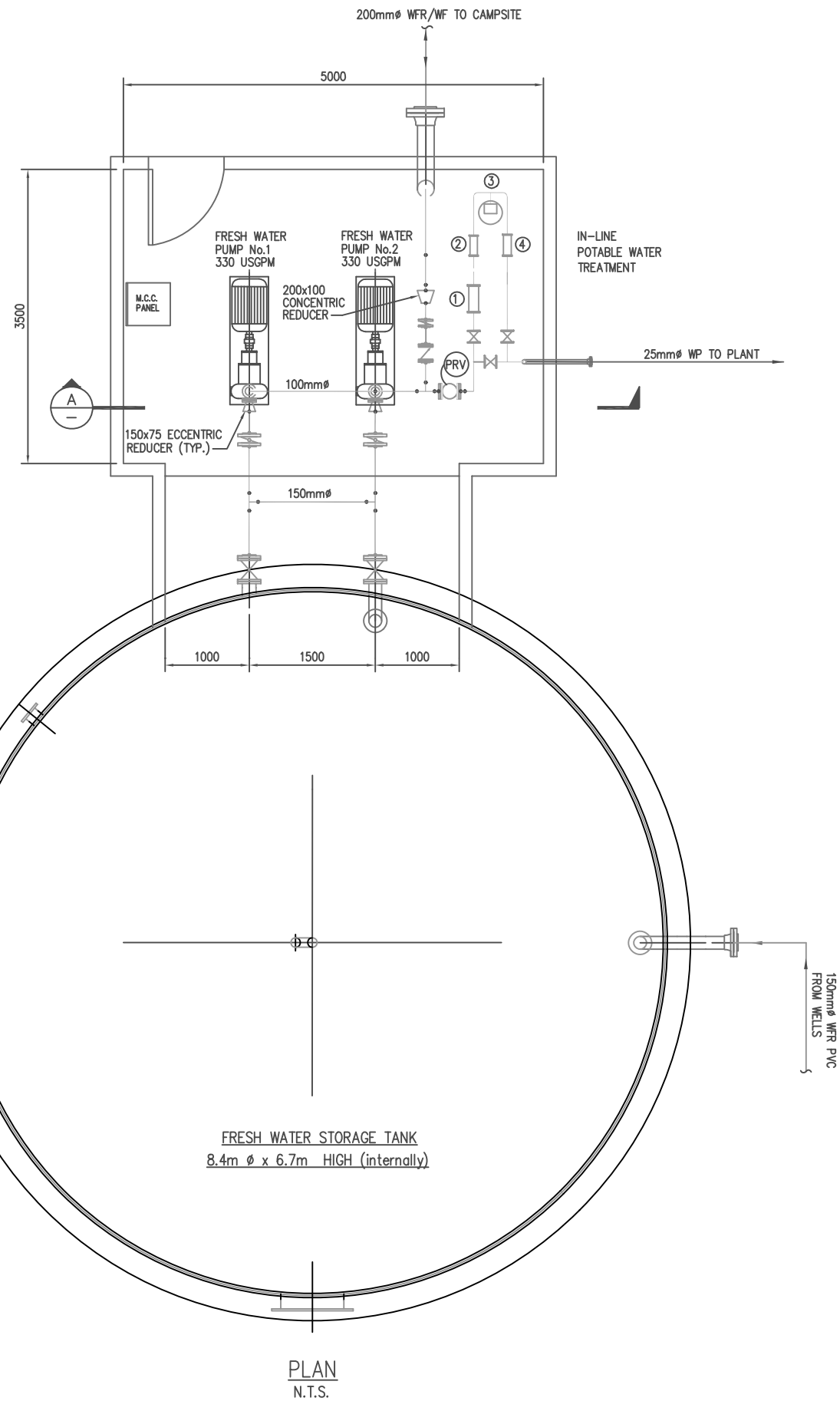
Drawing Number:  
**100-13-14**



Revised by: HD      Checked by: DDC

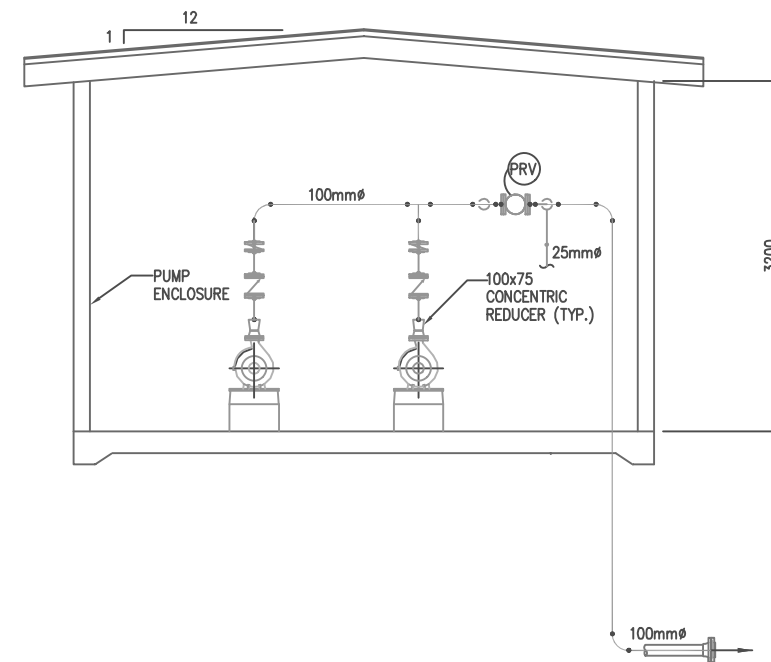
Date: Feb. 1, 2005





**NOTES:**

- 1.) FOR PUMPHOUSE LOCATION SEE DWG. 100-13-17.
- 2.) APPURTENANCES SHOWN ARE AS FOLLOWS:
  - ① - IN-LINE FILTER
  - ② - FLOW METER
  - ③ - HYFLOCHLORINATOR
  - ④ - IN-LINE MIXER



# Project Description & Environmental Assessment Report

## Carmacks Copper Project Yukon Territory



Note: Drawing is for illustrative purposes only, NOT FOR CONSTRUCTION

Original drawing from Kilborn. The engineering data on this drawing is solely for the purpose and project for which this drawing is issued. "Fresh Water Booster Pumphouse Plan and Sections", Drawing #100-13-20 Rev B

### Fresh Water Booster Pumphouse Plan and Sections

Drawing Number:  
100-13-20



Revised by: HD      Checked by: DDC

Date: Feb. 1, 2005

**Project Description  
& Environmental  
Assessment Report**

**Carmacks Copper  
Project  
Yukon Territory**



Note: Drawing is for illustrative purposes only,  
NOT FOR CONSTRUCTION

Original drawing from Kilborn,  
The engineering data on this drawing is solely for the  
purpose and project for which this drawing is issued.  
"Water Distribution Pumphouse Plan, Sections & Details",  
Drawing #100-13-21 Rev B

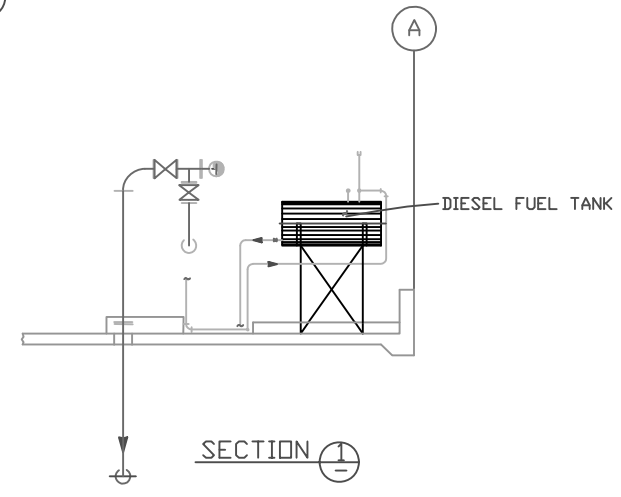
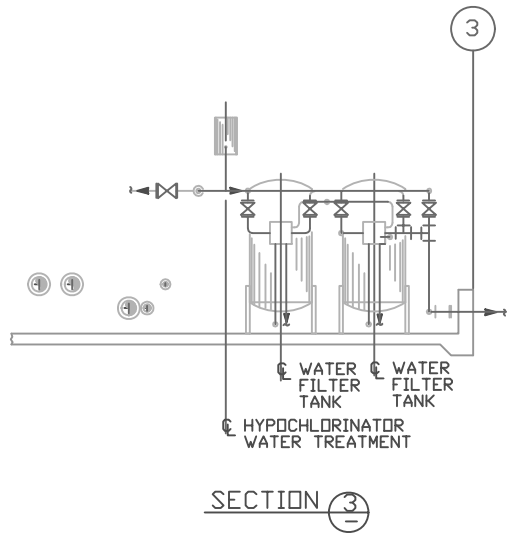
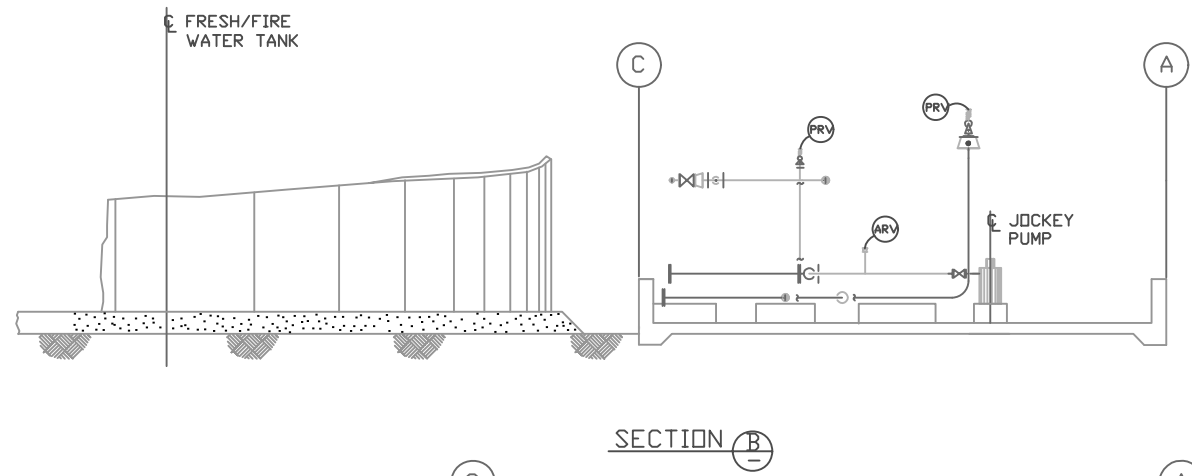
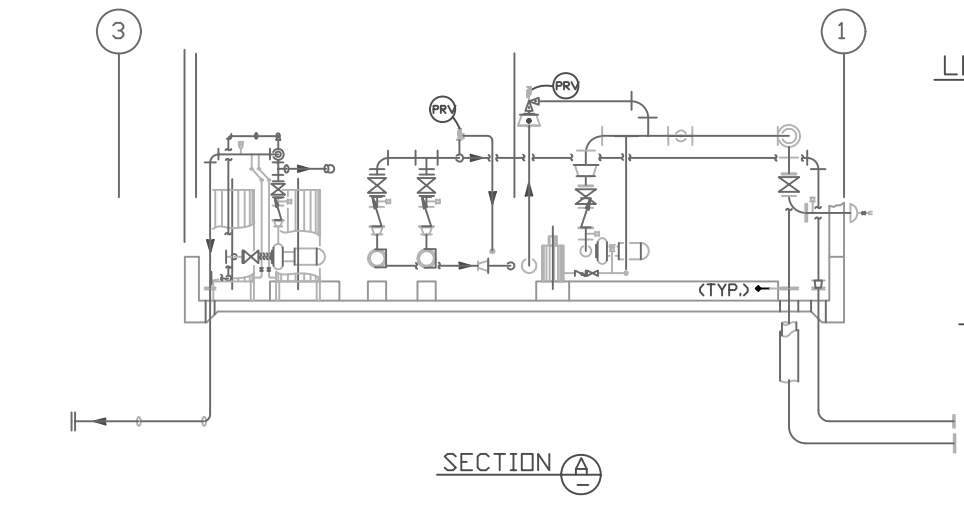
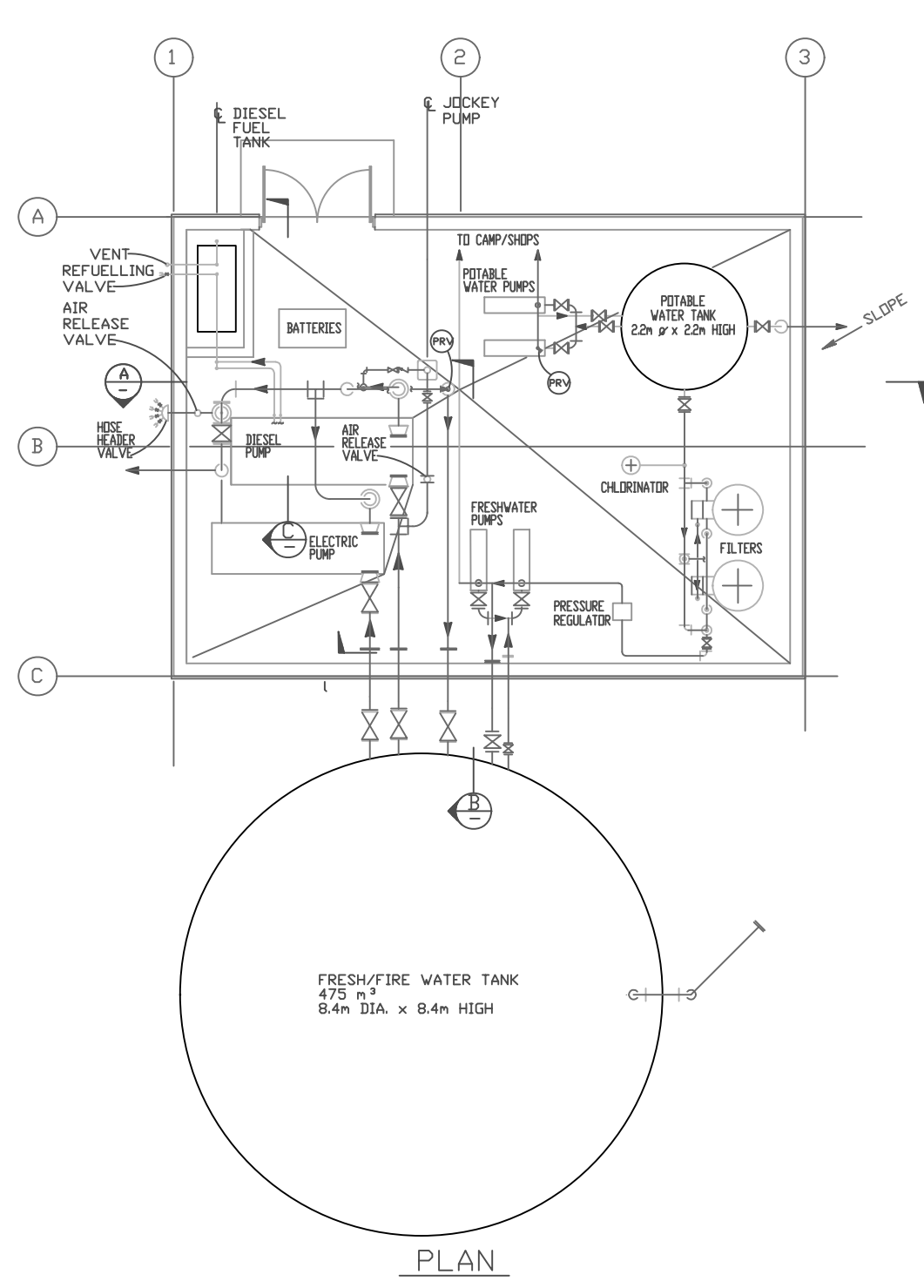
**Water Distribution  
Pumphouse Plan,  
Sections & Details**

Drawing Number:  
**100-13-21**



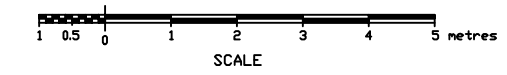
Revised by: HD      Checked by: DDC

Date: Feb. 1, 2005



**LEGEND:**

- WF - FIRE WATER
- WFR - FRESH WATER
- WP - POTABLE WATER
- FO - FUEL OIL
- PRV - PRESSURE RELIEF VALVE
- ARV - AIR RELEASE VALVE
- - CHANGE OF PIPE MATERIAL OR CONTRACT NUMBER



**Project Description  
& Environmental  
Assessment Report**

**Carmacks Copper  
Project  
Yukon Territory**



Note: Drawing is for illustrative purposes only,  
NOT FOR CONSTRUCTION

Original drawing from Kilborn,  
The engineering data on this drawing is solely for the  
purpose and project for which this drawing is issued.  
"Fuel Storage, Diesel Generators Plantsite Plan,  
Sections, Details",  
Drawing #100-13-23 Rev B

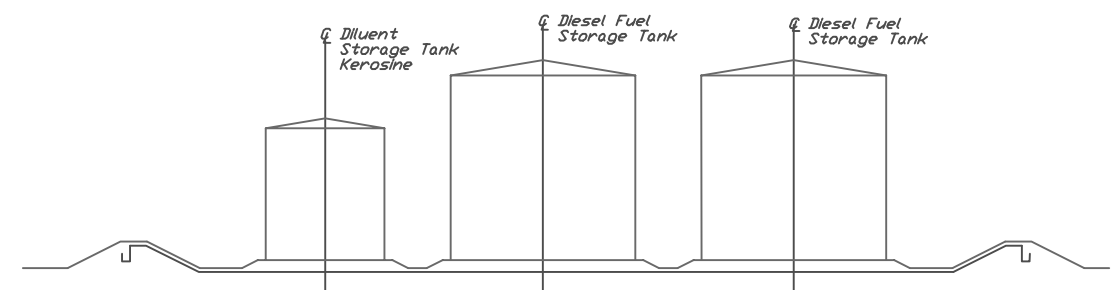
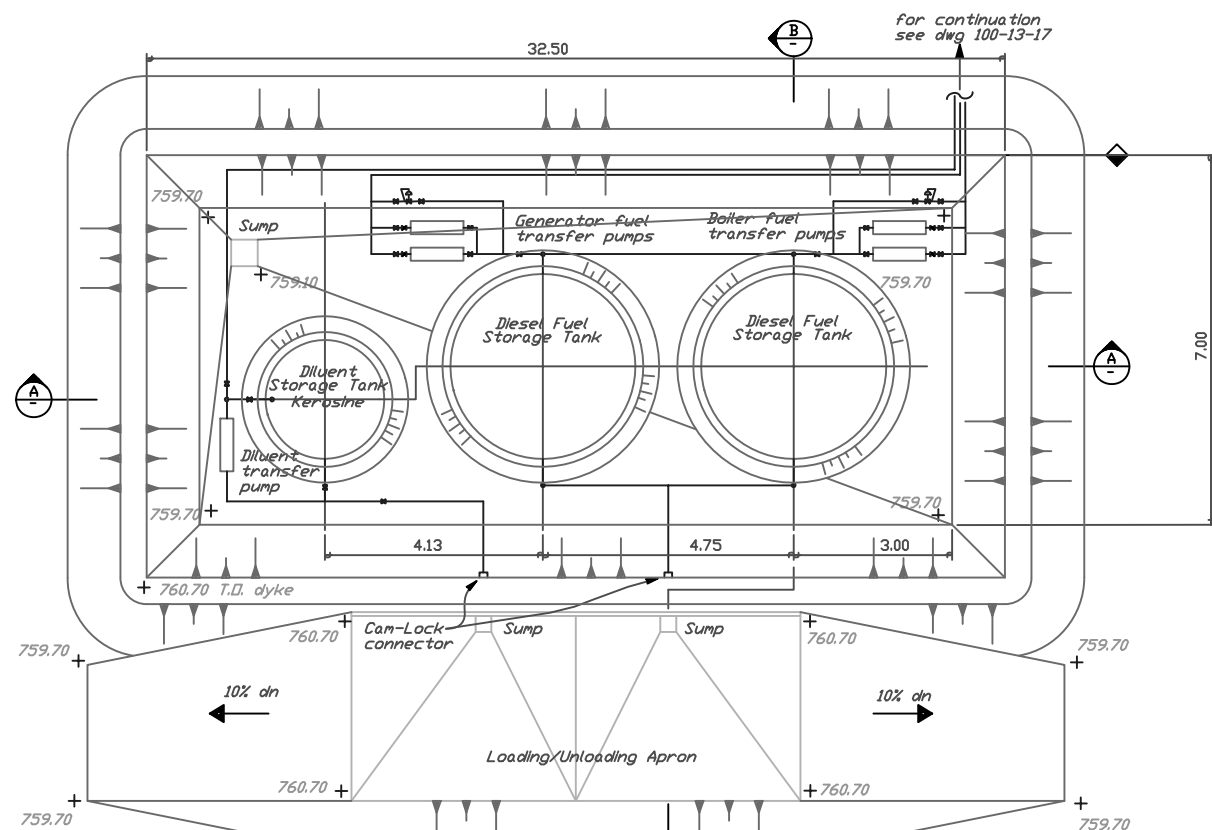
**Fuel Storage, Diesel  
Generators Plantsite  
Plan, Sections, Details**

Drawing Number:  
**100-13-23**

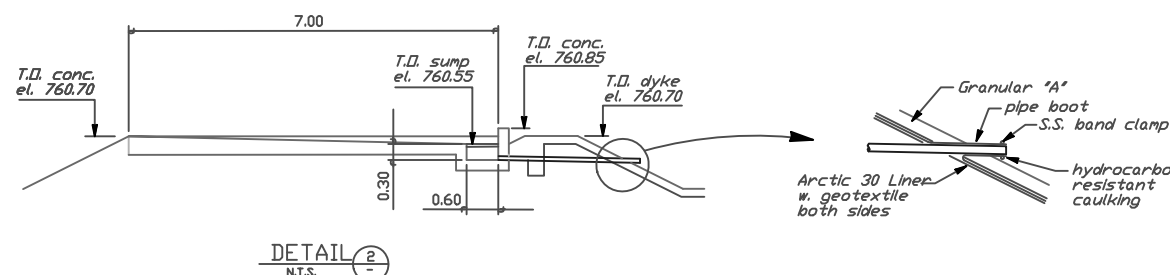
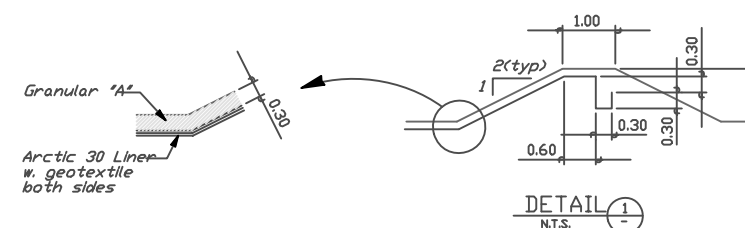
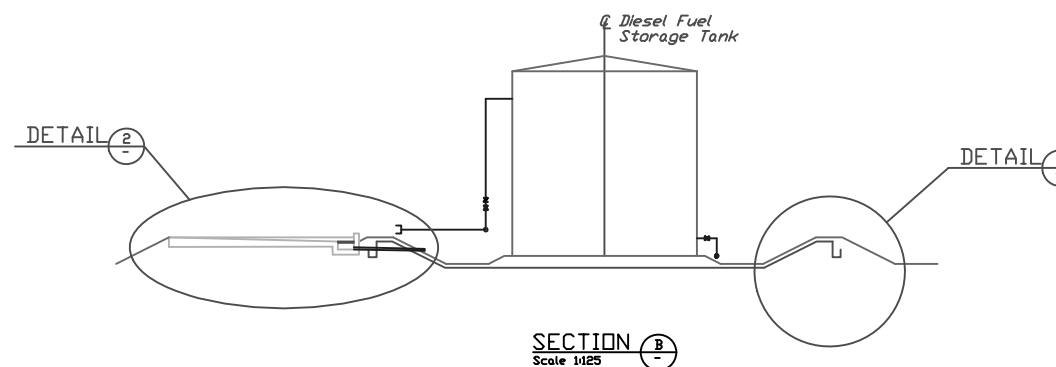


Revised by: HD      Checked by: DDC

Date: Feb. 1, 2005

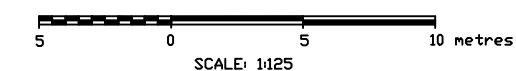


**SECTION A**  
Scale 1:125



**Notes:**

1. All dimensions and elevations in metres U.N.D.
2. Elevations shown are final grade.



**Project Description  
& Environmental  
Assessment Report**

**Carmacks Copper  
Project  
Yukon Territory**



Note: Drawing is for illustrative purposes only,  
NOT FOR CONSTRUCTION

Original drawing from Kilborn,  
The engineering data on this drawing is solely for the  
purpose and project for which this drawing is issued.  
"Fuel Storage Service Complex Plan, Sections & Details",  
Drawing #100-13-24 Rev B

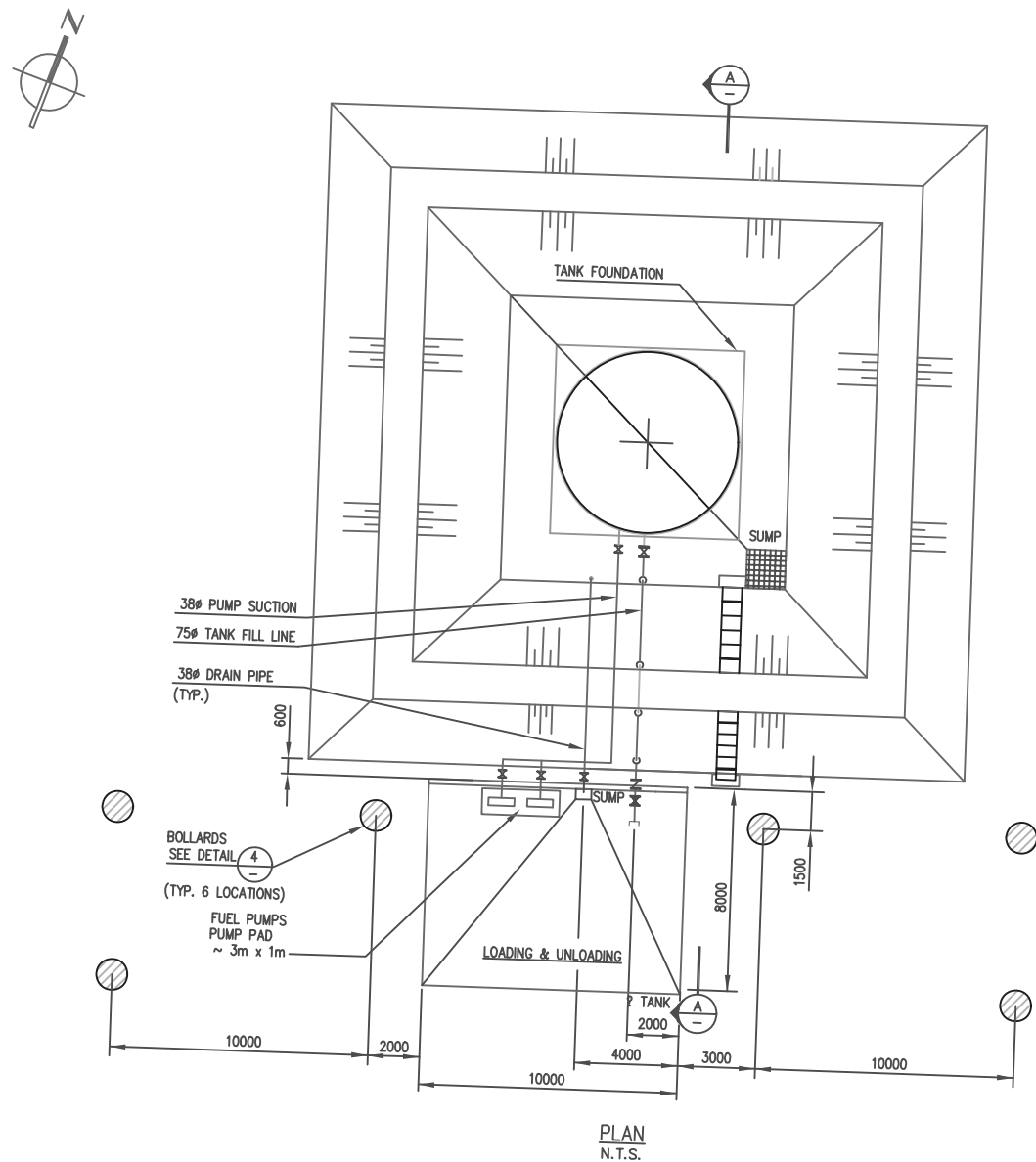
**Fuel Storage Service  
Complex Plan, Sections &  
Details**

Drawing Number:  
**100-13-24**

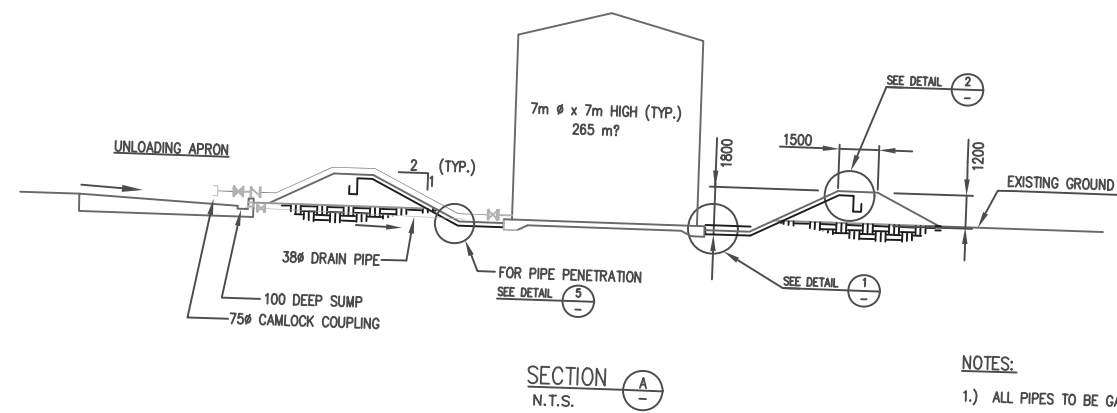


Revised by: HD      Checked by: DDC

Date: Feb. 1, 2005



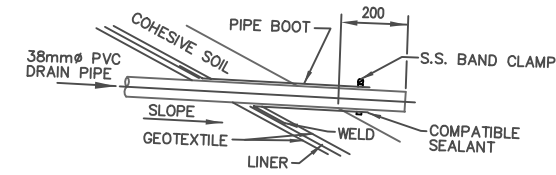
PLAN  
N.T.S.



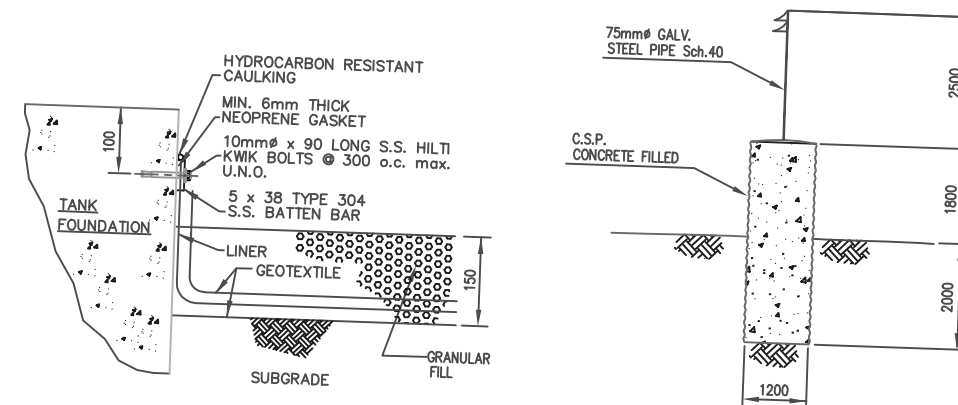
SECTION A-A  
N.T.S.

**NOTES:**

- 1.) ALL PIPES TO BE GALV. C.S. Sch.40.
- 2.) FOR LOCATION SEE DWG. 100-13-11.

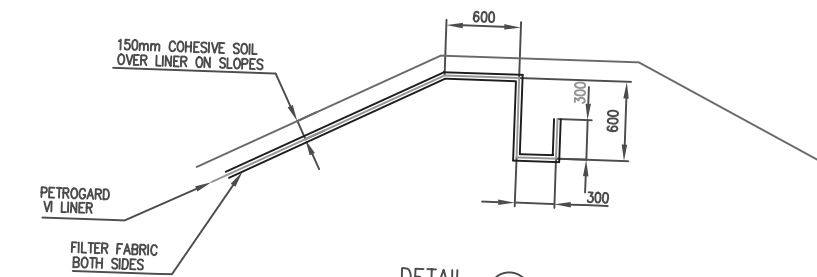


TYPICAL PIPE PENETRATION  
DETAIL 5  
N.T.S.

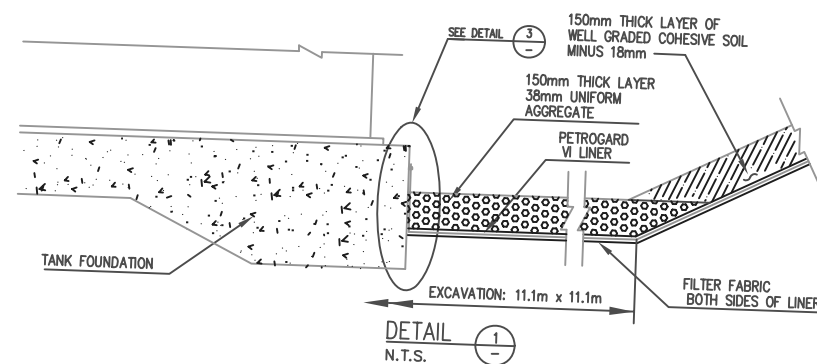


LINER ANCHORAGE AT FOUNDATION WALL  
DETAIL 3  
N.T.S.

TYPICAL BOLLARD  
DETAIL 4  
N.T.S.



DETAIL 2  
N.T.S.



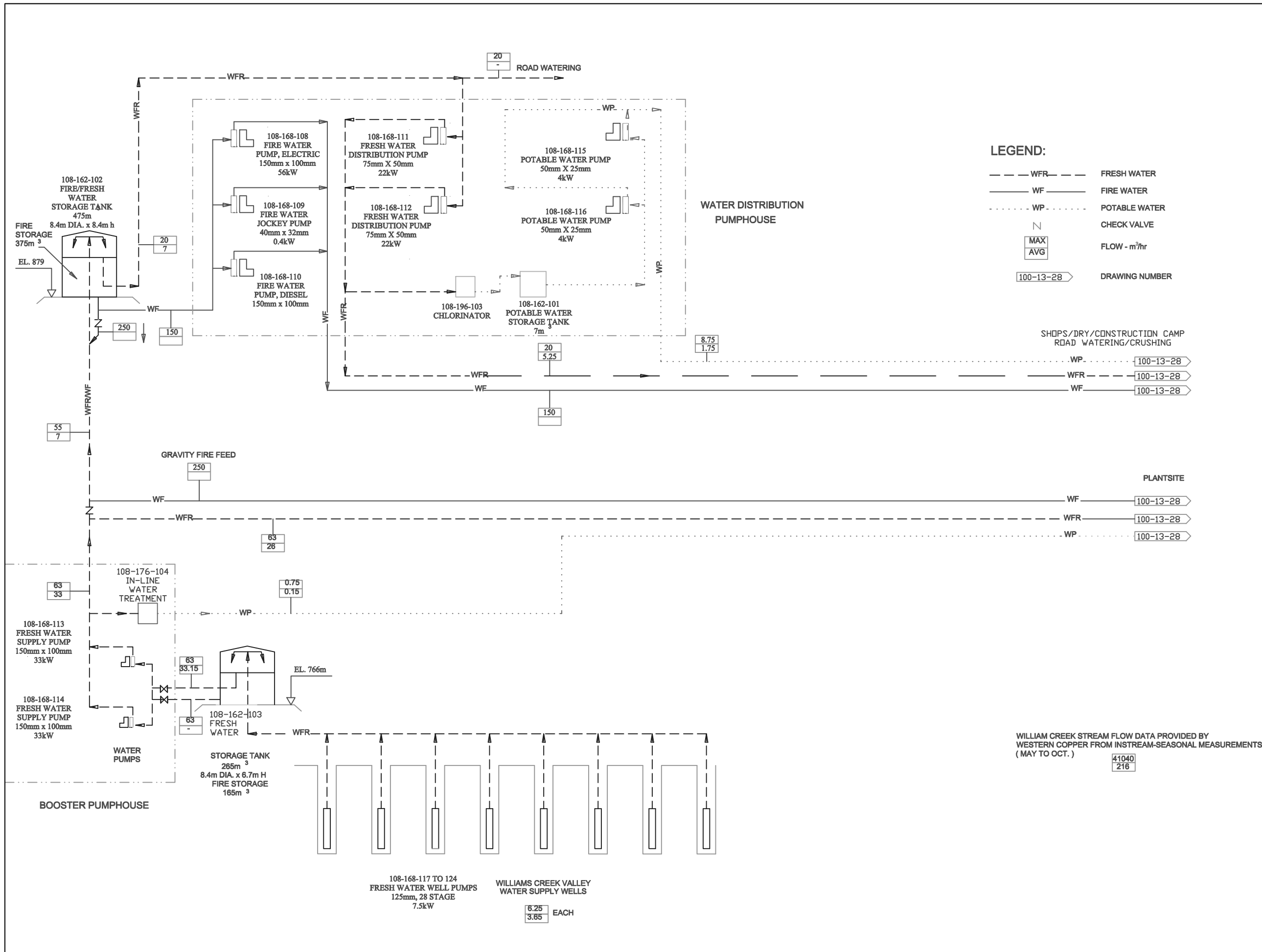
DETAIL 1  
N.T.S.

# Project Description & Environmental Assessment Report

## Carmacks Copper Project Yukon Territory



Note: Drawing is for illustrative purposes only,  
NOT FOR CONSTRUCTION



### Water Supply Diagram

Drawing Number:  
**100-13-27**



Revised by: HD      Checked by: DDC

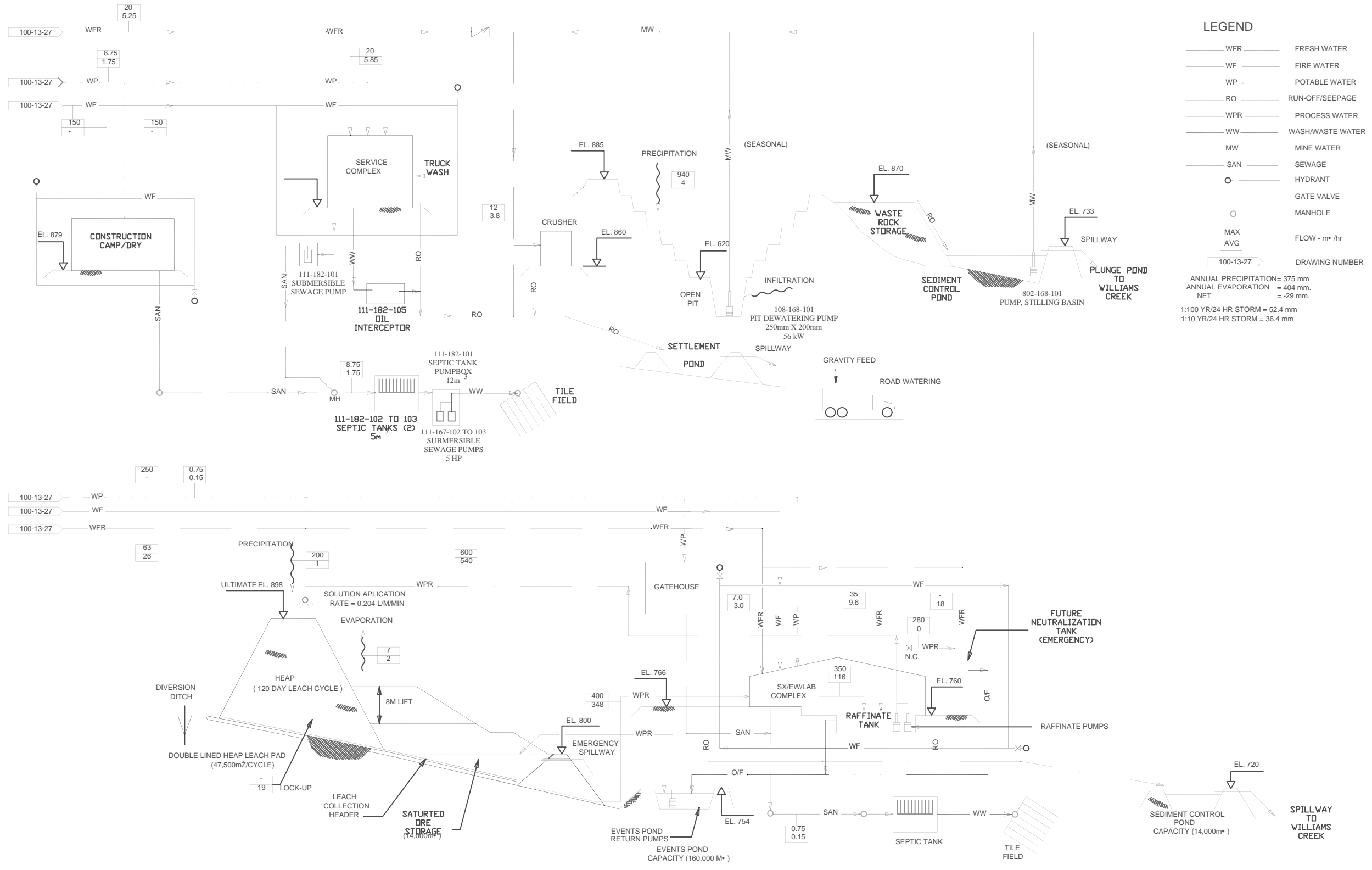
Date: Feb. 1, 2005

# Project Description & Environmental Assessment Report

## Carmacks Copper Project Yukon Territory



Note: Drawing is for illustrative purposes only,  
NOT FOR CONSTRUCTION



Original drawing from Kilborn,  
The engineering data on this drawing is solely for the  
purpose and project for which this drawing is issued.  
"Water Distribution Diagram",  
Drawing #100-13-28 Rev B

### Water Distribution Diagram

Drawing Number:  
**100-13-28**



Revised by: HD      Checked by: DDC

Date: Feb. 1, 2005

**Project Description  
& Environmental  
Assessment Report**

**Carmacks Copper  
Project  
Yukon Territory**



Note: Drawing is for illustrative purposes only, NOT FOR CONSTRUCTION

Original drawing from Kilborn,  
The engineering data on this drawing is solely for the purpose and project for which this drawing is issued.  
"Water Supply Pipeline Plan and Profile",  
Drawing #100-13-29 Rev A

**Water Supply Pipeline  
Plan and Profile**

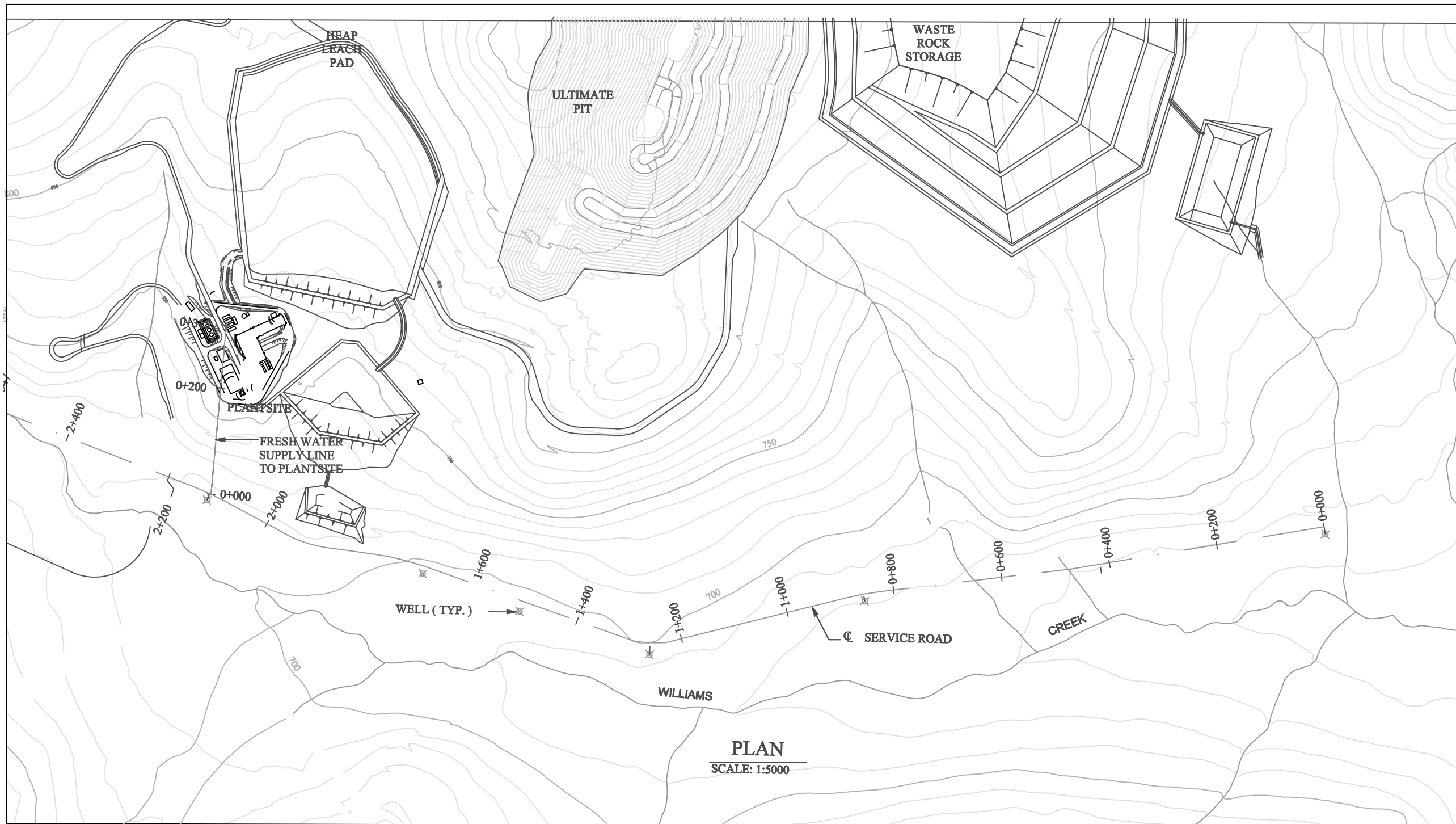
Drawing Number:  
**100-13-29**



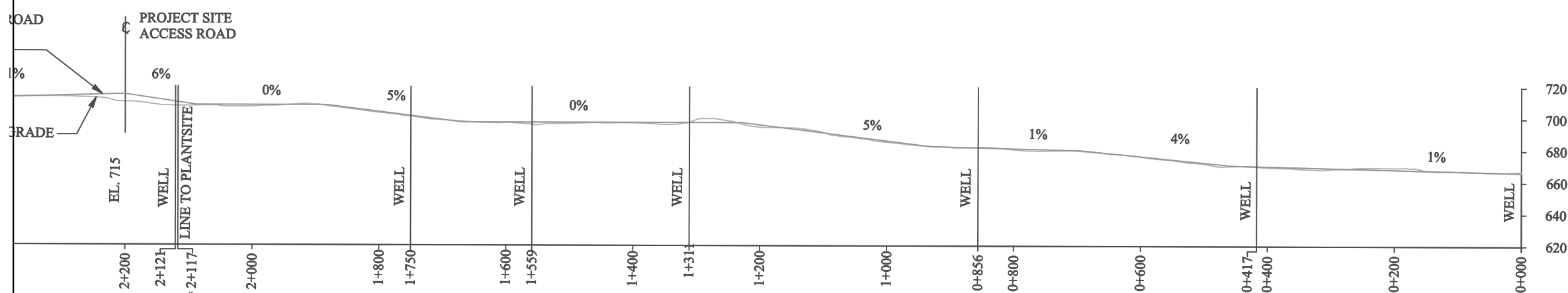
Revised by: HD

Checked by: DDC

Date: Feb. 1, 2005



**PLAN**  
SCALE: 1:5000





**Project Description  
& Environmental  
Assessment Report**

**Carmacks Copper  
Project  
Yukon Territory**



Note: Drawing is for illustrative purposes only,  
NOT FOR CONSTRUCTION

Original drawing from Kilborn,  
The engineering data on this drawing is solely for the  
purpose and project for which this drawing is issued.  
"Overall Site Plan Year 2",  
Drawing #100-13-45 Rev B

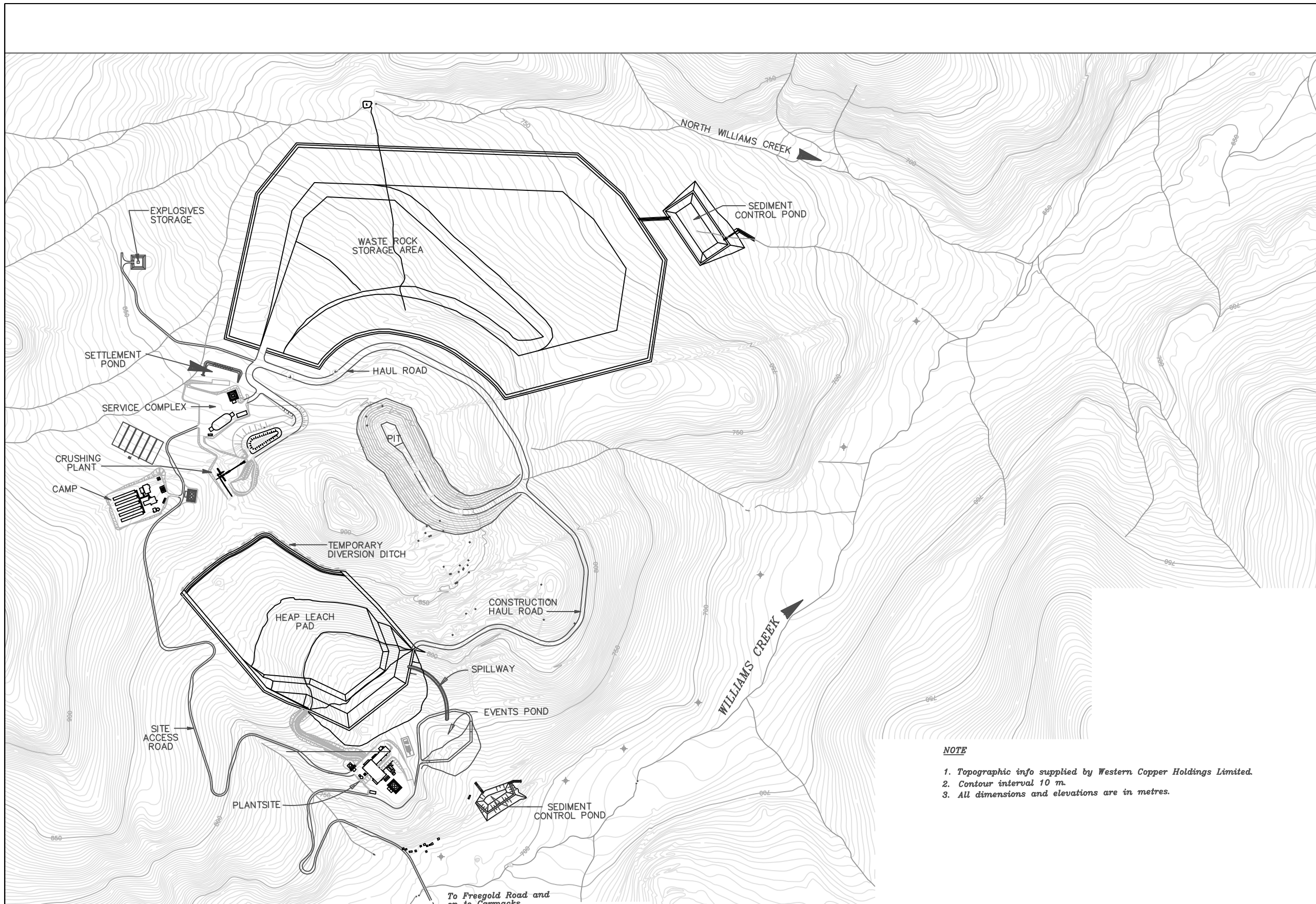
**Overall Site Plan  
Year 2**

Drawing Number:  
**100-13-45**



Revised by: HD      Checked by: DDC

Date: Feb. 1, 2005



**Project Description  
& Environmental  
Assessment Report**

**Carmacks Copper  
Project  
Yukon Territory**



Note: Drawing is for illustrative purposes only,  
NOT FOR CONSTRUCTION

Original drawing from Kilborn,  
The engineering data on this drawing is solely for the  
purpose and project for which this drawing is issued.  
"Project Site Plan Earthworks Sheet 1",  
Drawing #100-13-46

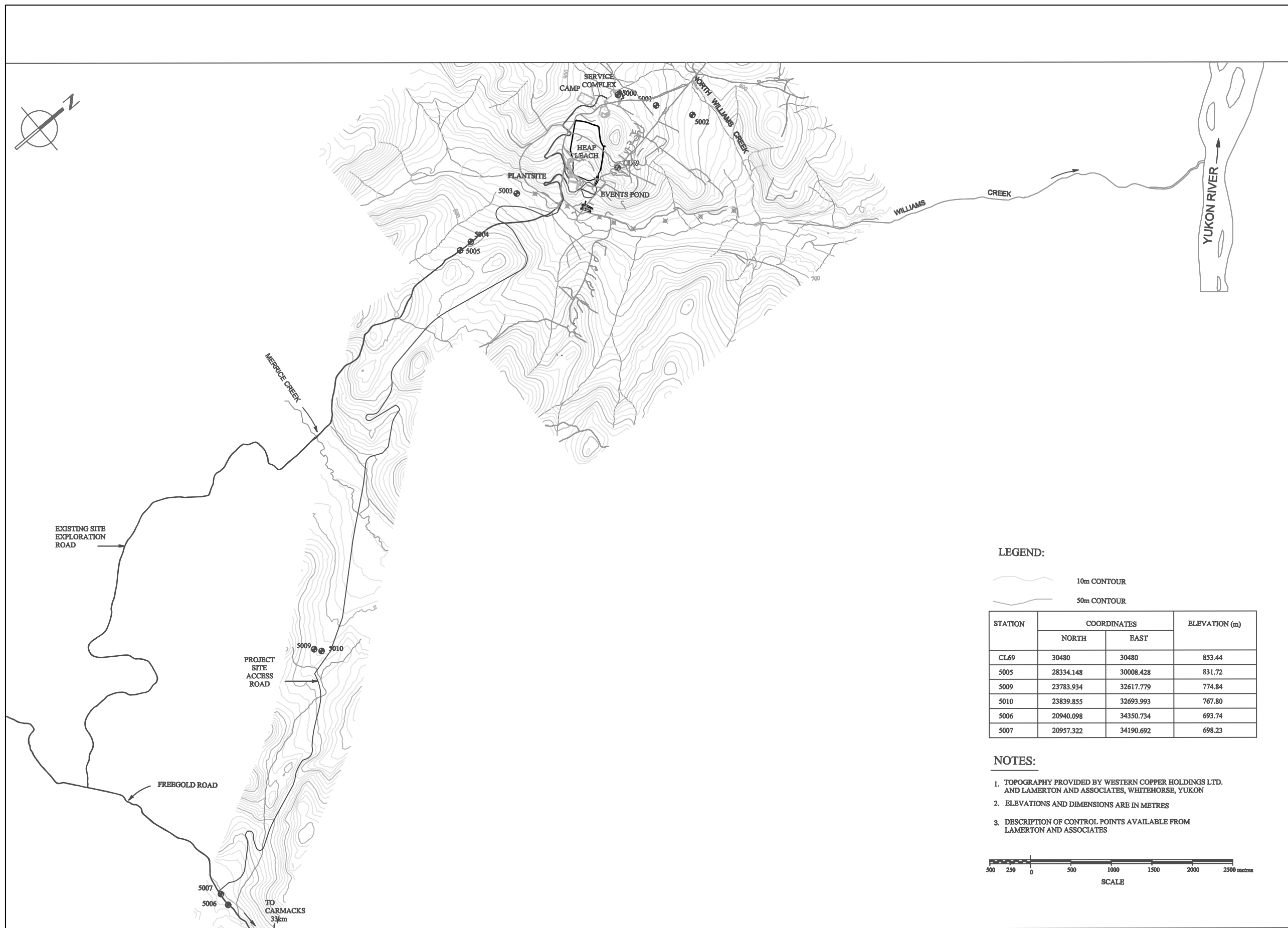
**Project Site Plan  
Earthworks Sheet 1**

Drawing Number:  
**100-13-46**



Revised by: HD      Checked by: DDC

Date: Feb. 1, 2005



**LEGEND:**

- 10m CONTOUR
- 50m CONTOUR

STATION	COORDINATES		ELEVATION (m)
	NORTH	EAST	
CL69	30480	30480	853.44
5005	28334.148	30008.428	831.72
5009	23783.934	32617.779	774.84
5010	23839.855	32693.993	767.80
5006	20940.098	34350.734	693.74
5007	20957.322	34190.692	698.23

**NOTES:**

1. TOPOGRAPHY PROVIDED BY WESTERN COPPER HOLDINGS LTD. AND LAMERTON AND ASSOCIATES, WHITEHORSE, YUKON
2. ELEVATIONS AND DIMENSIONS ARE IN METRES
3. DESCRIPTION OF CONTROL POINTS AVAILABLE FROM LAMERTON AND ASSOCIATES



**Project Description  
& Environmental  
Assessment Report**

**Carmacks Copper  
Project  
Yukon Territory**



Note: Drawing is for illustrative purposes only,  
NOT FOR CONSTRUCTION

Original drawing from Kilborn,  
The engineering data on this drawing is solely for the  
purpose and project for which this drawing is issued.  
"Overall Site Conceptual Reclamation/Closure Plan",  
Drawing #100-13-60 Rev B

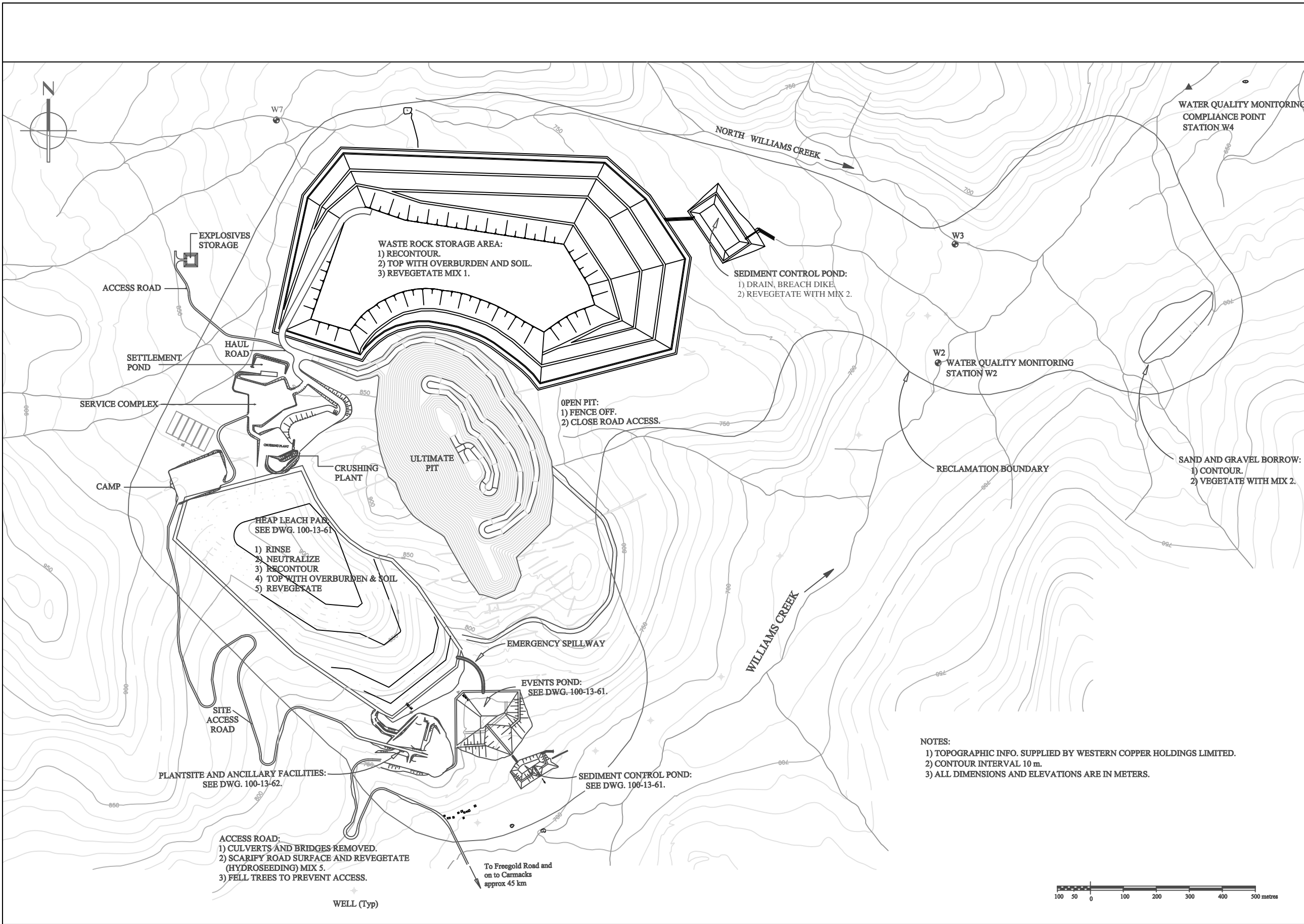
**Overall Site Conceptual  
Reclamation/Closure Plan**

Drawing Number:  
**100-13-60**



Revised by: HD      Checked by: DDC

Date: Feb. 1, 2005



# Project Description & Environmental Assessment Report

## Carmacks Copper Project Yukon Territory



Note: Drawing is for illustrative purposes only, NOT FOR CONSTRUCTION

Original drawing from Kilborn. The engineering data on this drawing is solely for the purpose and project for which this drawing is issued. "Crushing and Screening Flowsheet #1", Drawing #200-03-01 Rev G

### Crushing and Screening Flowsheet #1

Drawing Number:  
200-03-01



Revised by: HD      Checked by: DDC

Date: Feb. 1, 2005

