



**Western Copper
Corporation**

Project Proposal
Carmacks Copper Project
Yukon Territory

Appendix H4

Williams and Nancy Lee Creek
Sample Station Photographs



W1 – Tributary to Williams Creek, looking upstream (June 2006)



W1 – Tributary to Williams Creek, looking downstream (June 2006)



W2 – Williams Creek Downstream of W1 Tributary, looking downstream (August 2006)



W2 – Williams Creek Downstream of W1 Tributary, looking upstream (August 2006)



W3 – North Williams Creek, looking upstream (August 2006)



W3 – North Williams Creek, looking downstream (August 2006)



W4 – Williams Creek Downstream of Confluence with North Williams Creek, looking upstream
(August 2006)



W4 – Williams Creek Downstream of Confluence with North Williams Creek, looking
downstream (August 2006)



W5 – South East Tributary to Williams Creek, looking upstream (August 2006)



W5 – South East Tributary to Williams Creek, looking downstream (August 2006)



W6 – Williams Creek Downstream of South East Tributary, looking downstream (August 2006)



W6-Williams Creek Downstream of South East Tributary, looking upstream (August 2006)



W7 – North Williams Creek Culvert at Haul Road, upstream (June 2006)



W7 – North Williams Creek Culvert at Haul Road, upstream (June 2006)



Pond Upstream of W7 – North Williams Creek Culvert at Haul Road (August 2006)



W7- New North Williams Creek Culvert at Haul Road (August 2006)



W9 – Williams Creek Upstream of Access Road, looking upstream (August 2006)



W9 – Williams Creek Upstream of Access Road, looking downstream (August 2006)



W10 – Williams Creek Upstream of Yukon River, looking upstream (August 2006)



W10 – Williams Creek Upstream of Yukon River, looking downstream (August 2006)



W11 – Nancy Lee Creek (Tributary of Williams Creek), looking upstream (August 2006)



W11 – Nancy Lee Creek (Tributary of Williams Creek), looking downstream (August 2006)



W12 – Williams Creek Downstream of Confluence with Nancy Lee Creek, looking upstream
(August 2006)



W12 – Williams Creek Downstream of Confluence with Nancy Lee Creek, looking downstream
(August 2006)



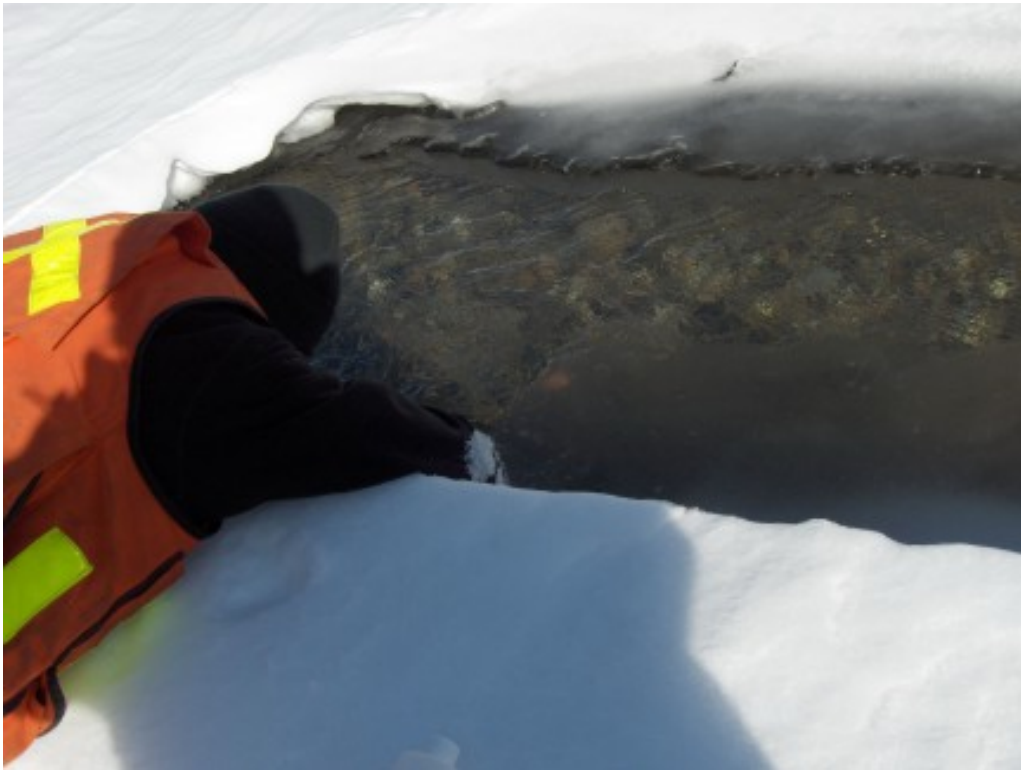
W13 – Williams Creek Upstream of Confluence with Nancy Lee Creek, looking upstream
(August 2006)



W13 – Williams Creek Upstream of Confluence with Nancy Lee Creek, looking downstream
(August 2006)



Y1 – Upstream of Williams Creek Confluence (April 2006)



Y2 – Downstream of Williams Creek Confluence (April 2006)