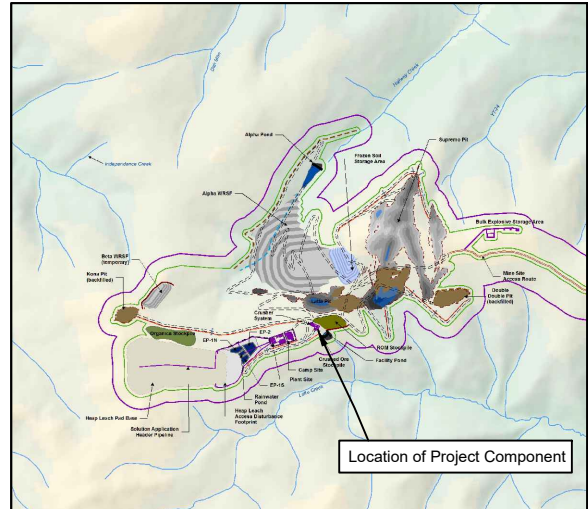


APPENDIX 2-A
Project Description
Detailed Figures

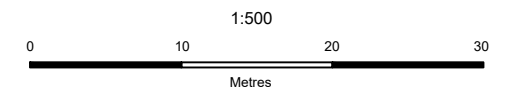
Crusher Layout



Legend

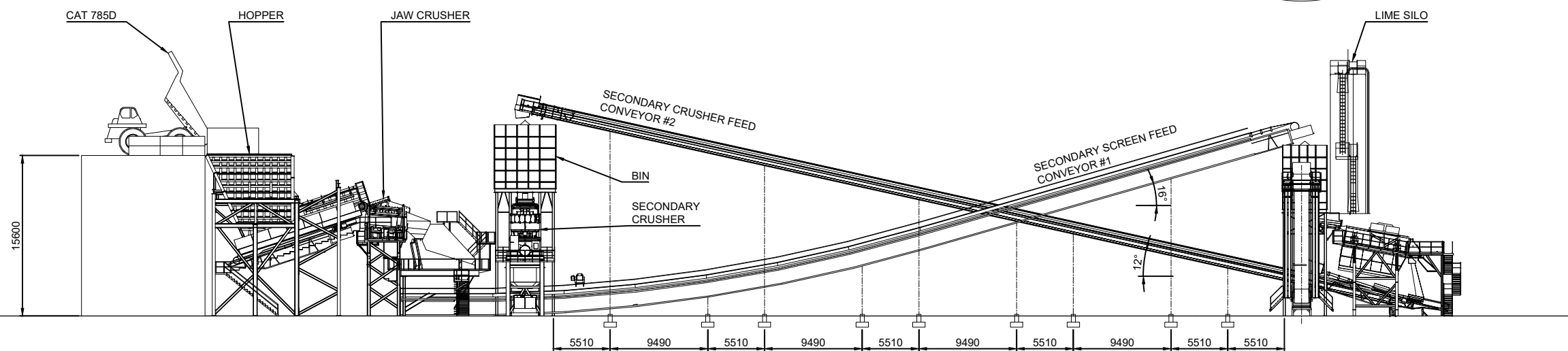
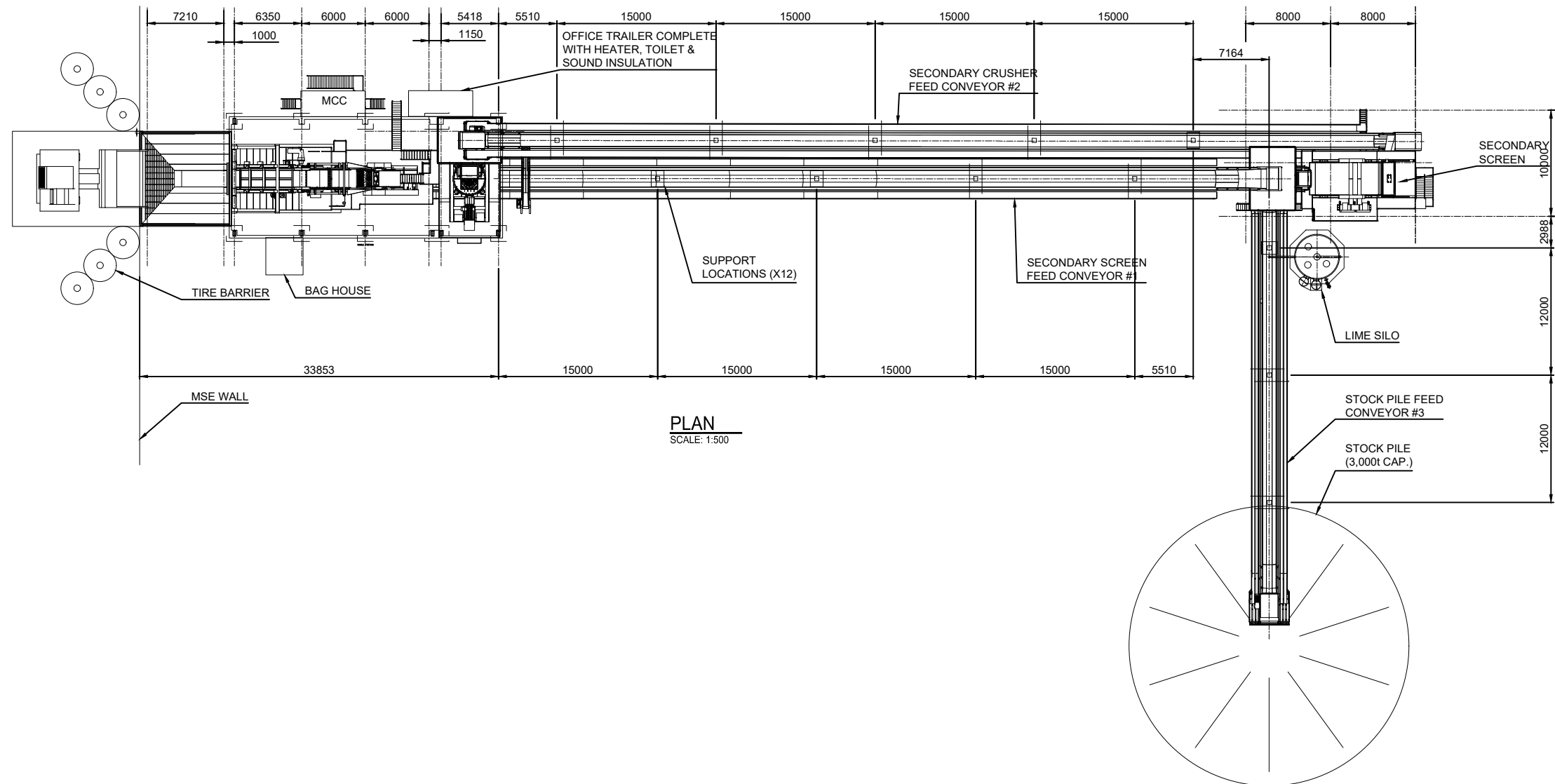
Notes

1. This figure is not intended to be a stand-alone document, but a visual aid to the information contained within the referenced Report. It is intended to be used in conjunction with the scope of services and limitations described therein.
2. This is a re-creation of JDS drawing number 15VA0067-100-1400-001, Rev. B, project number 15VA0067.

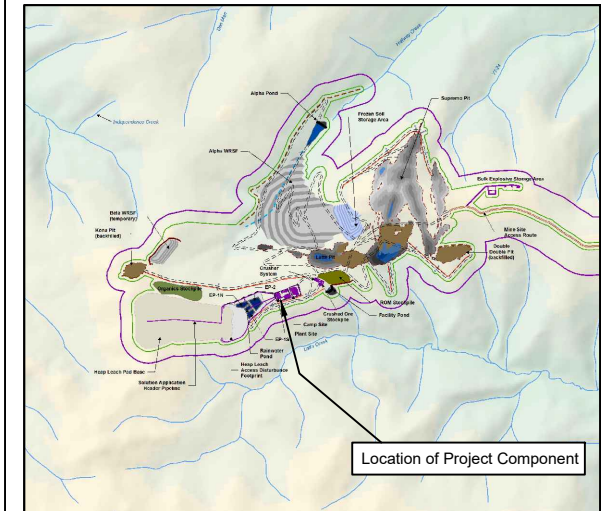


Page Size: 11" x 17"

Figure 2A-1	Date: Mar 27, 2017	Drawn by: JS	Reviewed: CPK
-------------	-----------------------	-----------------	------------------



Path: C:\116501659\00301\mxd\Project_Description\Fig2A-1_1555_00_01_Crushing_471337.dwg

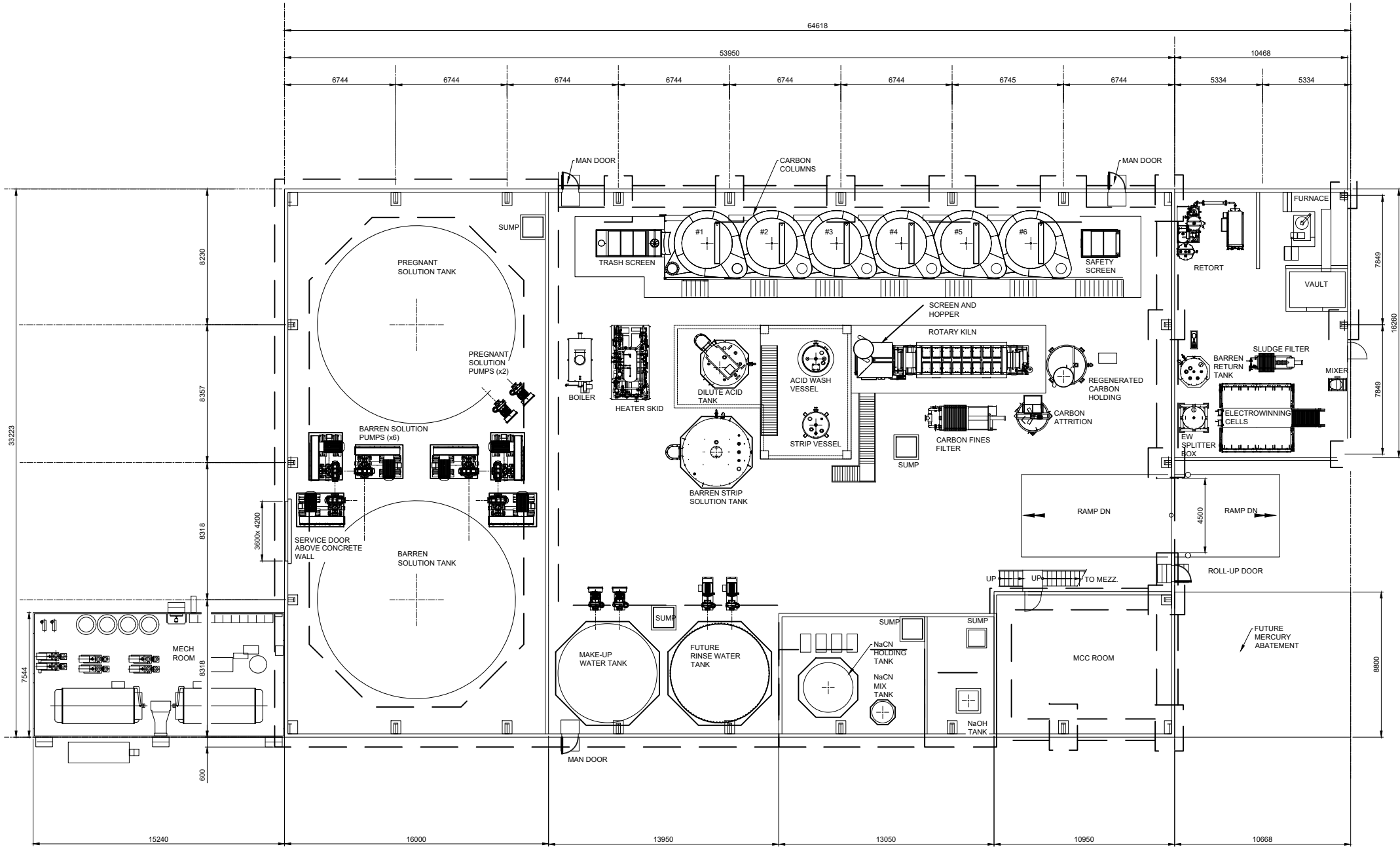


Location of Project Component

Legend

Notes

1. This figure is not intended to be a stand-alone document, but a visual aid to the information contained within the referenced Report. It is intended to be used in conjunction with the scope of services and limitations described therein.
2. This is a re-creation of JDS drawing number 15VA0067-100-1400-005, project number 15VA0067.



PLAN
SCALE: 1:300

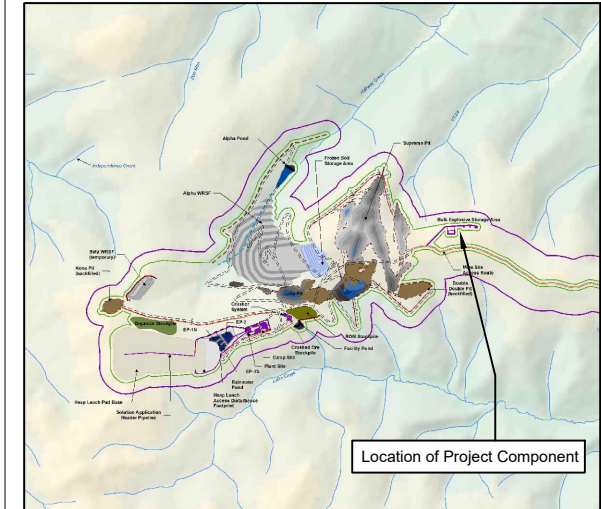


Page Size: 11" x 17"

Figure 2A-2	Date: Mar 27, 2017	Drawn by: JS	Reviewed: CPK
-------------	-----------------------	-----------------	------------------

Path: C:\116500\1659\003\01\mxd\Project_Description\Fig2A-2_1659_003_01_processPlant_170377.dwg

**Bulk Explosive Storage Area
Layout and Sections**



Legend

Notes

1. This figure is not intended to be a stand-alone document, but a visual aid to the information contained within the referenced Report. It is intended to be used in conjunction with the scope of services and limitations described therein.
2. This is a re-creation of JDS drawing number 100-20-001, designed December 9, 2015.

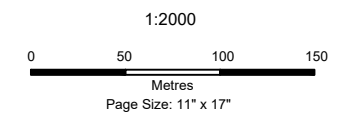
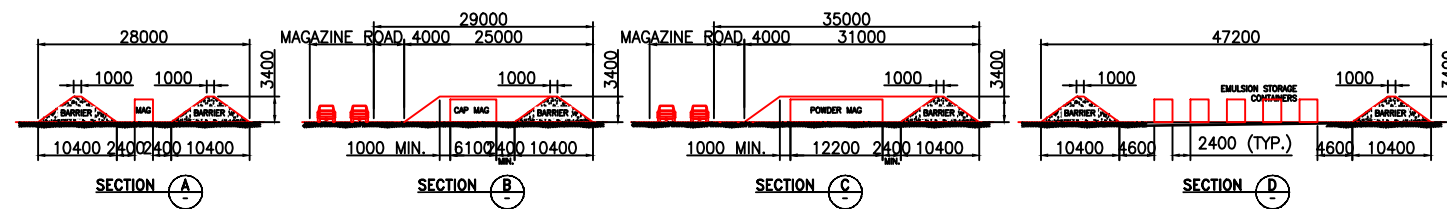
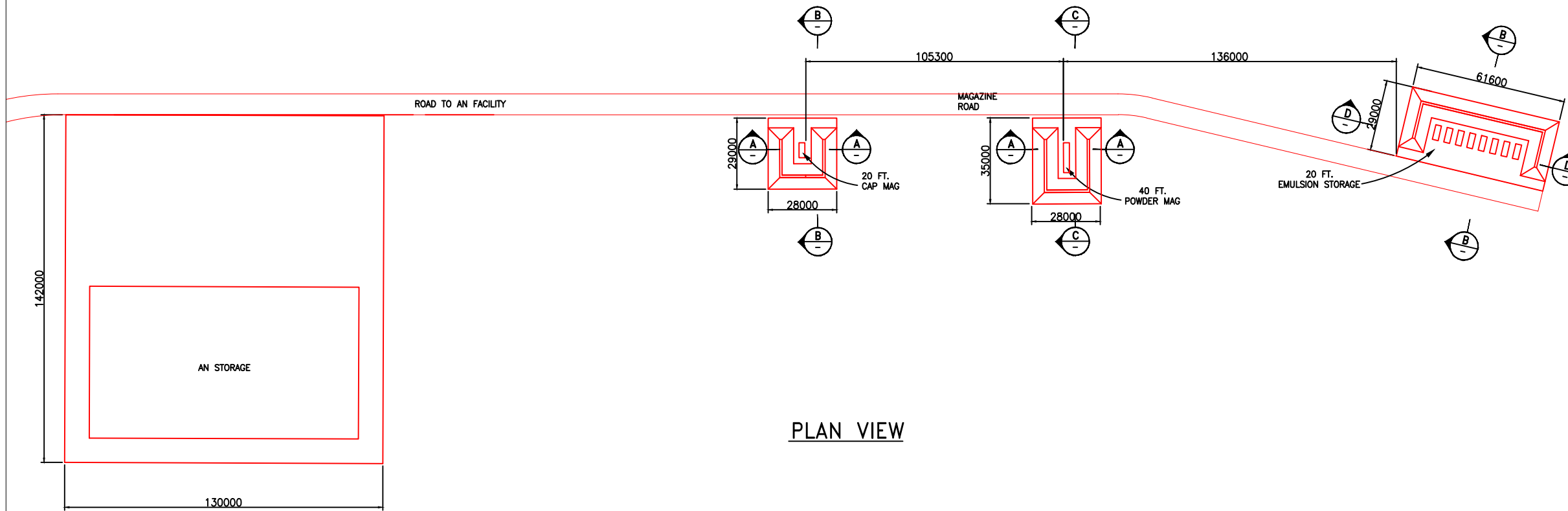


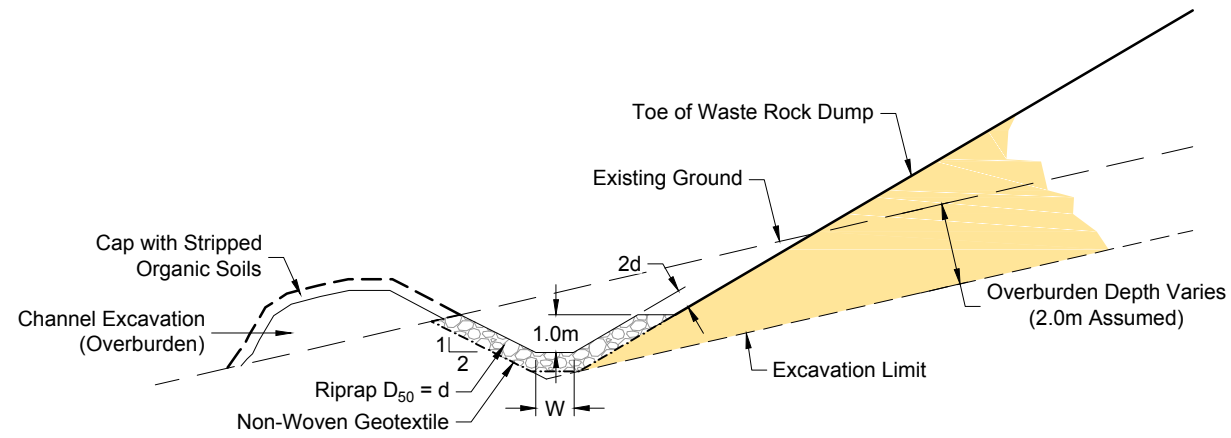
Figure 2A-3

Date:
Mar 27, 2017

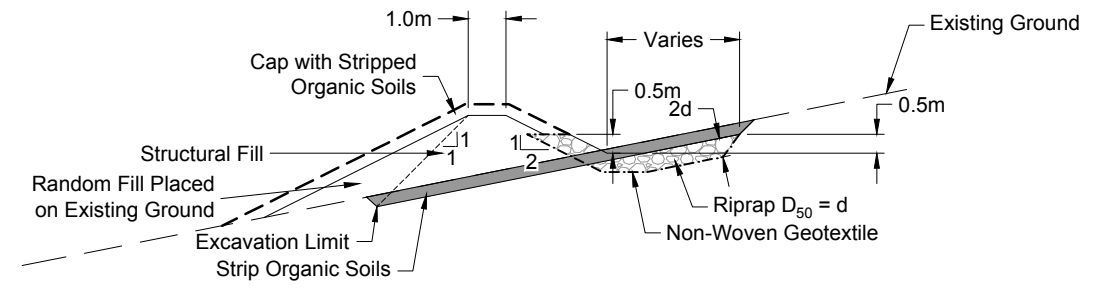
Drawn by:
JS

Reviewed:
CPK

Typical Cross-sections for Water Management Infrastructure



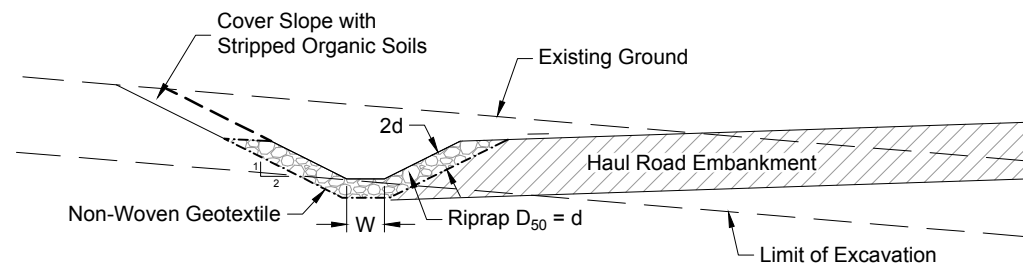
**Detail 1 - Typical Section
Waste Rock Perimeter Collection Channel**



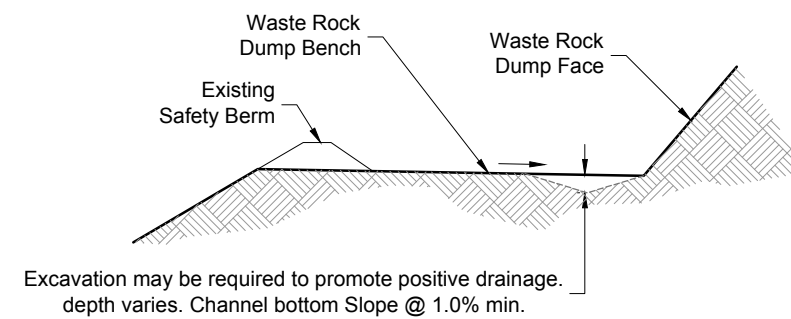
**Detail 2
Typical Section - Diversion Berm**

Legend

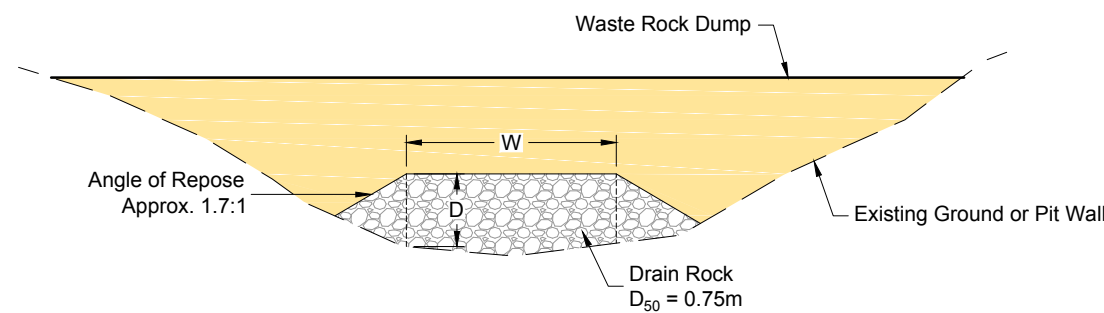
- Waste Rock Dump
- Rip Rap
- Haul Road Embankment
- Existing Ground
- Impervious Liner
- Non-Woven Geotextile



**Detail 3 - Typical Section
Haul Road Drainage Ditch**



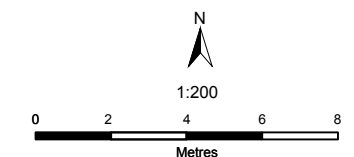
**Detail 4 - Typical Section
Waste Rock Bench Diversion Ditch**



**Detail 5 - Typical Section
Waste Rock Dump Rock Drain**

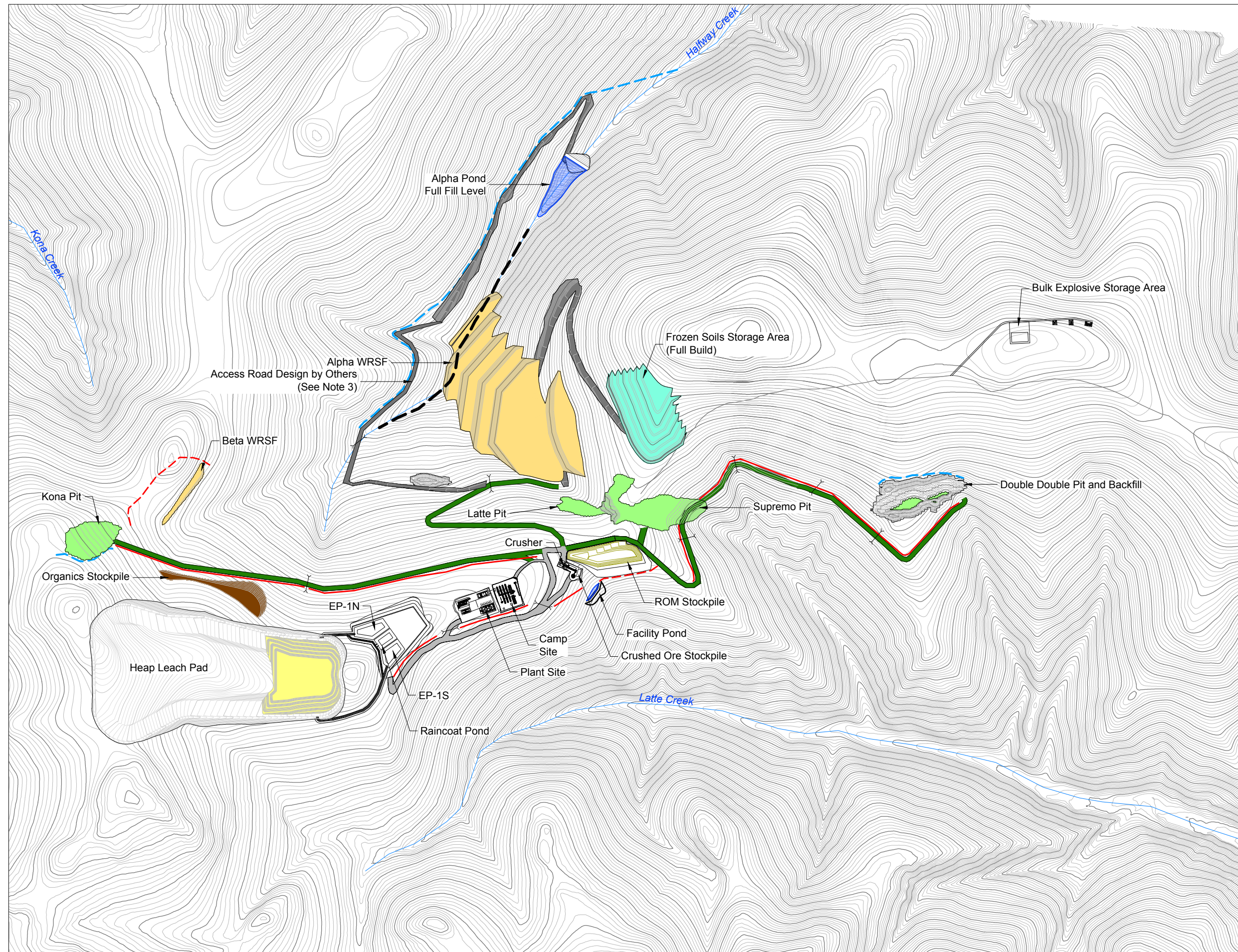
Notes

1. This figure is not intended to be a "stand-alone" document, but a visual aid to the information contained within the referenced Report. It is intended to be used in conjunction with the scope of services and limitations described therein.



COFFEE GOLD MINE

Mine Site General Arrangement
at End of Year 1

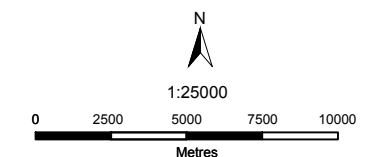


Legend

- Diversion Berm
- Rock Drain
- Road Drainage Ditch
- - - Waste Rock Collection Channel
- Active Pit
- Frozen Soils Storage Area
- Pit Backfill
- Pit Footprint
- Sedimentation Pond
- Waste Rock Storage Facility
- Heap Stack
- Access Road
- Haul Road
- Culvert

Notes

1. This figure is not intended to be a "stand-alone" document, but a visual aid to the information contained within the referenced Report. It is intended to be used in conjunction with the scope of services and limitations described therein.
2. Contours shown at a 5 meter contour interval.
3. Access road design to be finalized in next phase.



NAD 1983 UTM Zone 7N

Page Size: 11" x 17"

Figure 2A-5

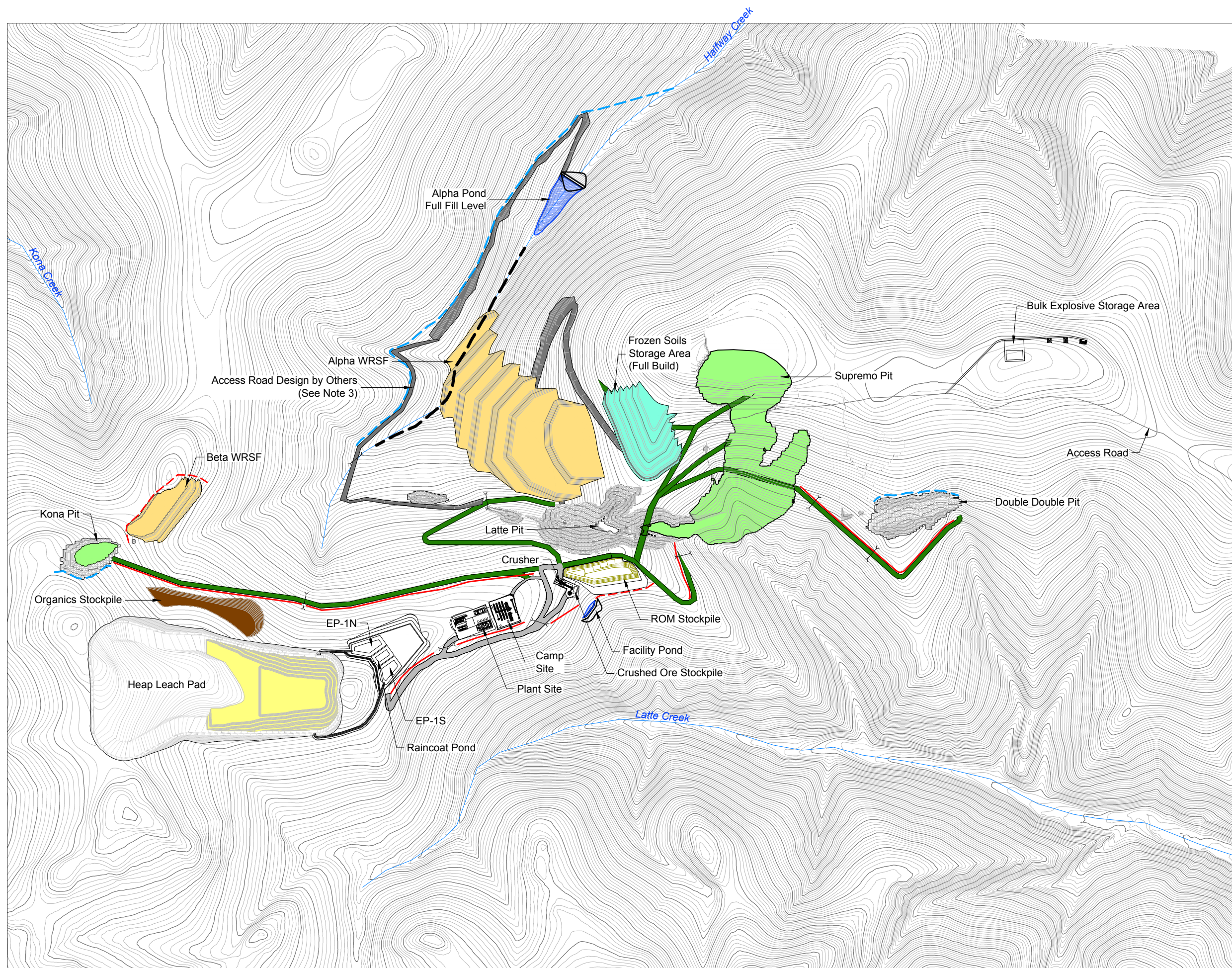
Date:
Mar 30, 2017

Drawn by:
TAH

Reviewed:
DP/TS

COFFEE GOLD MINE

Mine Site General Arrangement
at End of Year 2

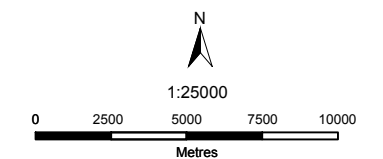


Legend

- Diversion Berm
- Rock Drain
- Road Drainage Ditch
- Waste Rock Collection Channel
- Active Pit
- Frozen Soils Storage Area
- Pit Backfill
- Pit Footprint
- Sedimentation Pond
- Waste Rock Storage Facility
- Heap Stack
- Access Road
- Haul Road
- Culvert

Notes

1. This figure is not intended to be a "stand-alone" document, but a visual aid to the information contained within the referenced Report. It is intended to be used in conjunction with the scope of services and limitations described therein.
2. Contours shown at a 5 meter contour interval.
3. Access road design to be finalized in next phase.



NAD 1983 UTM Zone 7N

Page Size: 11" x 17"

Figure 2A-6

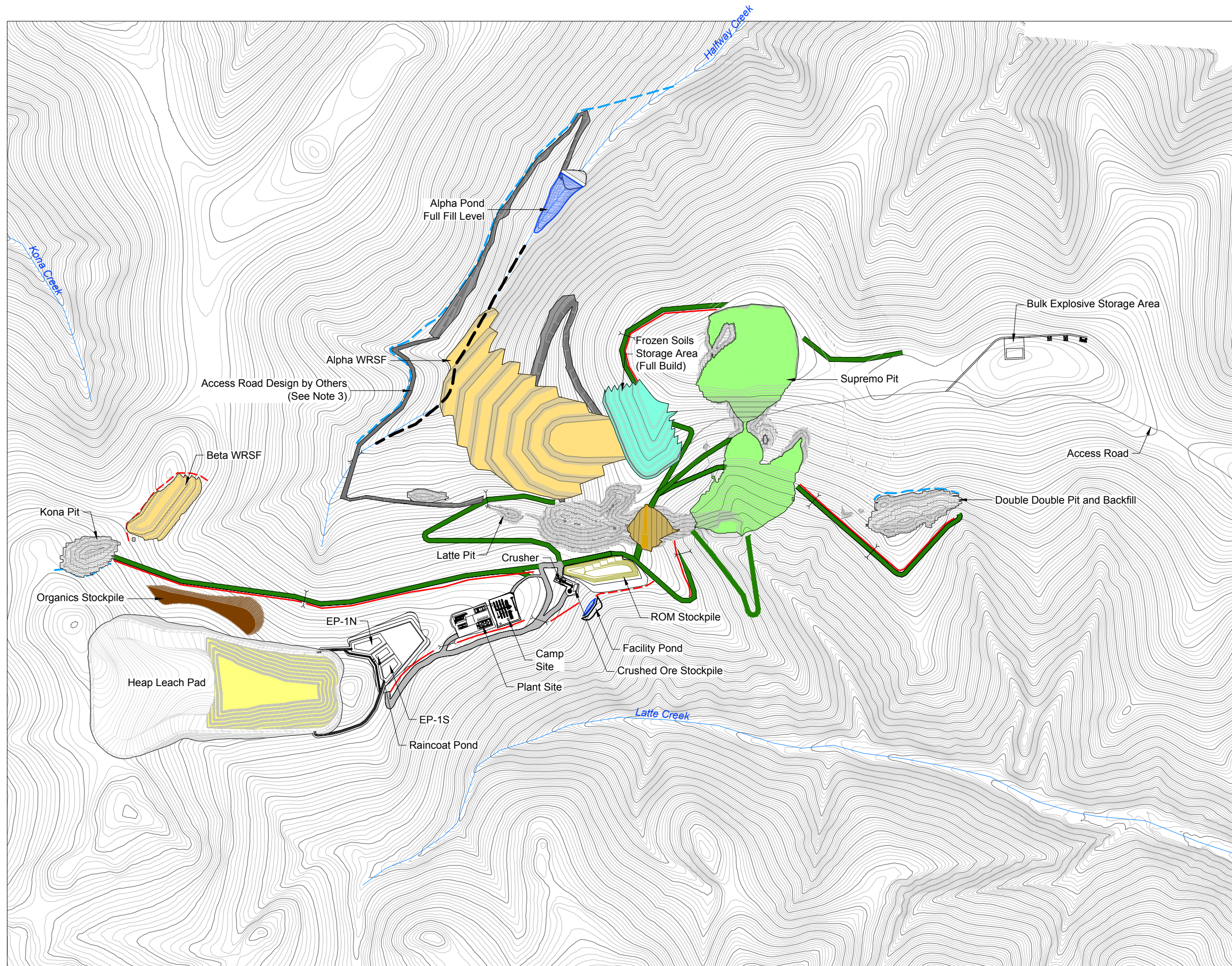
Date:
Mar 30, 2017

Drawn by:
TAH

Reviewed:
DP/TS

COFFEE GOLD MINE

Mine Site general Arrangement
at End of Year 3

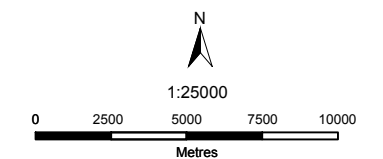


Legend

- Diversion Berm
- Rock Drain
- Road Drainage Ditch
- - - Waste Rock Collection Channel
- Active Pit
- Frozen Soils Storage Area
- Pit Backfill
- Pit Footprint
- Sedimentation Pond
- Waste Rock Storage Facility
- Heap Stack
- Access Road
- Haul Road
- Culvert

Notes

1. This figure is not intended to be a "stand-alone" document, but a visual aid to the information contained within the referenced Report. It is intended to be used in conjunction with the scope of services and limitations described therein.
2. Contours shown at a 5 meter contour interval



NAD 1983 UTM Zone 7N

Page Size: 11" x 17"

Figure 2A-7

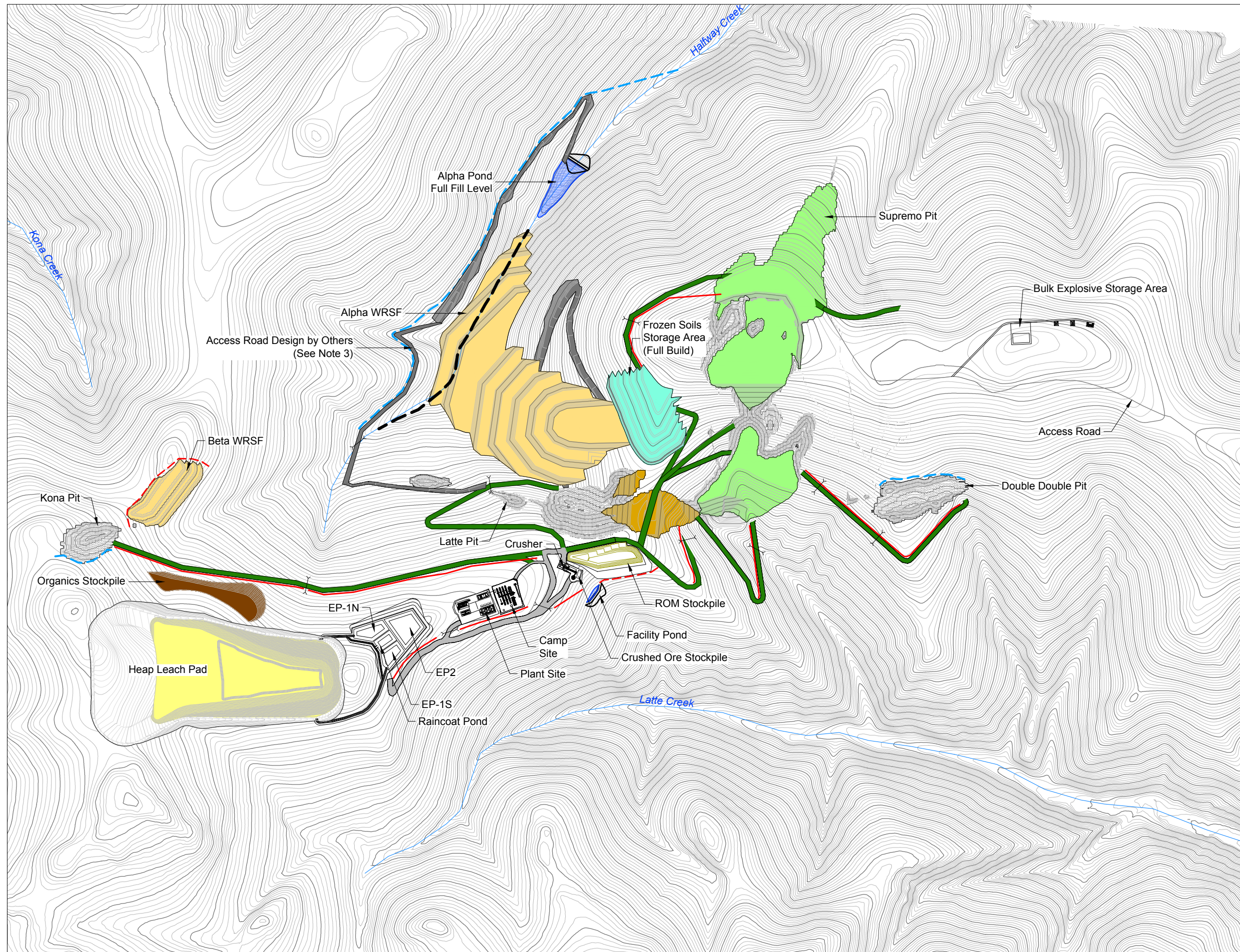
Date:
Mar 30, 2017

Drawn by:
TAH

Reviewed:
DP/TS

COFFEE GOLD MINE

Mine Site General Arrangement
at End of Year 4

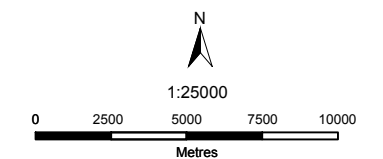


Legend

- Diversion Berm
- Rock Drain
- Road Drainage Ditch
- - - Waste Rock Collection Channel
- Active Pit
- Frozen Soils Storage Area
- Pit Backfill
- Pit Footprint
- Sedimentation Pond
- Waste Rock Storage Facility
- Heap Stack
- Access Road
- Haul Road
- Culvert

Notes

1. This figure is not intended to be a "stand-alone" document, but a visual aid to the information contained within the referenced Report. It is intended to be used in conjunction with the scope of services and limitations described therein.
2. Contours shown at a 5 meter contour interval.
3. Access road design to be finalized in next phase.



NAD 1983 UTM Zone 7N

Page Size: 11" x 17"

Figure 2A-8

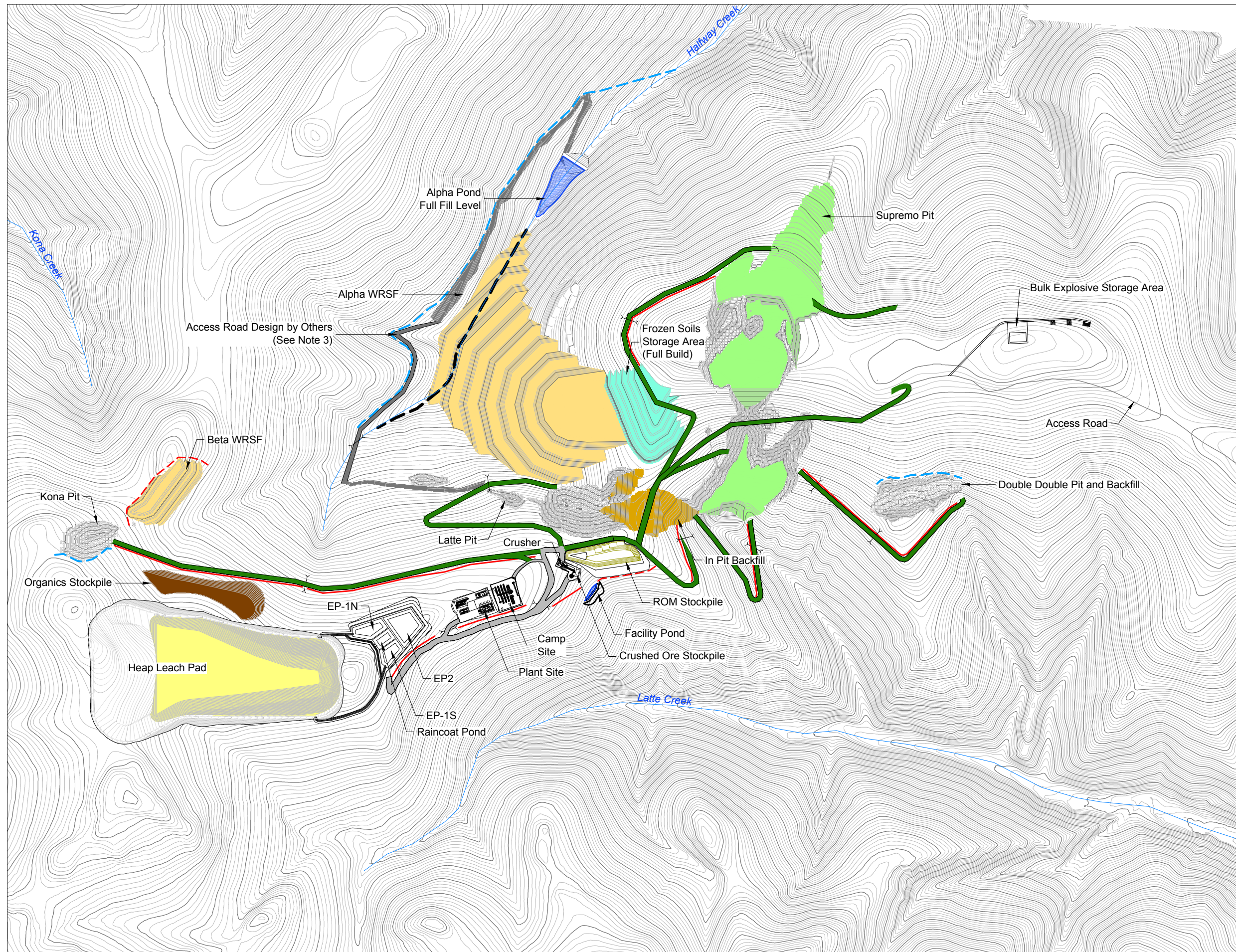
Date:
Mar 30, 2017

Drawn by:
TAH

Reviewed:
DP/TS

COFFEE GOLD MINE

Mine Site General Arrangement
at End of Year 5

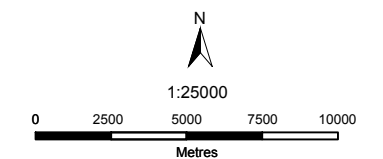


Legend

- Diversion Berm
- Rock Drain
- Road Drainage Ditch
- - - Waste Rock Collection Channel
- Active Pit
- Frozen Soils Storage Area
- Pit Backfill
- Pit Footprint
- Sedimentation Pond
- Waste Rock Storage Facility
- Heap Stack
- Access Road
- Haul Road
- Culvert

Notes

1. This figure is not intended to be a "stand-alone" document, but a visual aid to the information contained within the referenced Report. It is intended to be used in conjunction with the scope of services and limitations described therein.
2. Contours shown at a 5 meter contour interval.
3. Access road design to be finalized in next phase.



NAD 1983 UTM Zone 7N

Page Size: 11" x 17"

Figure 2A-9

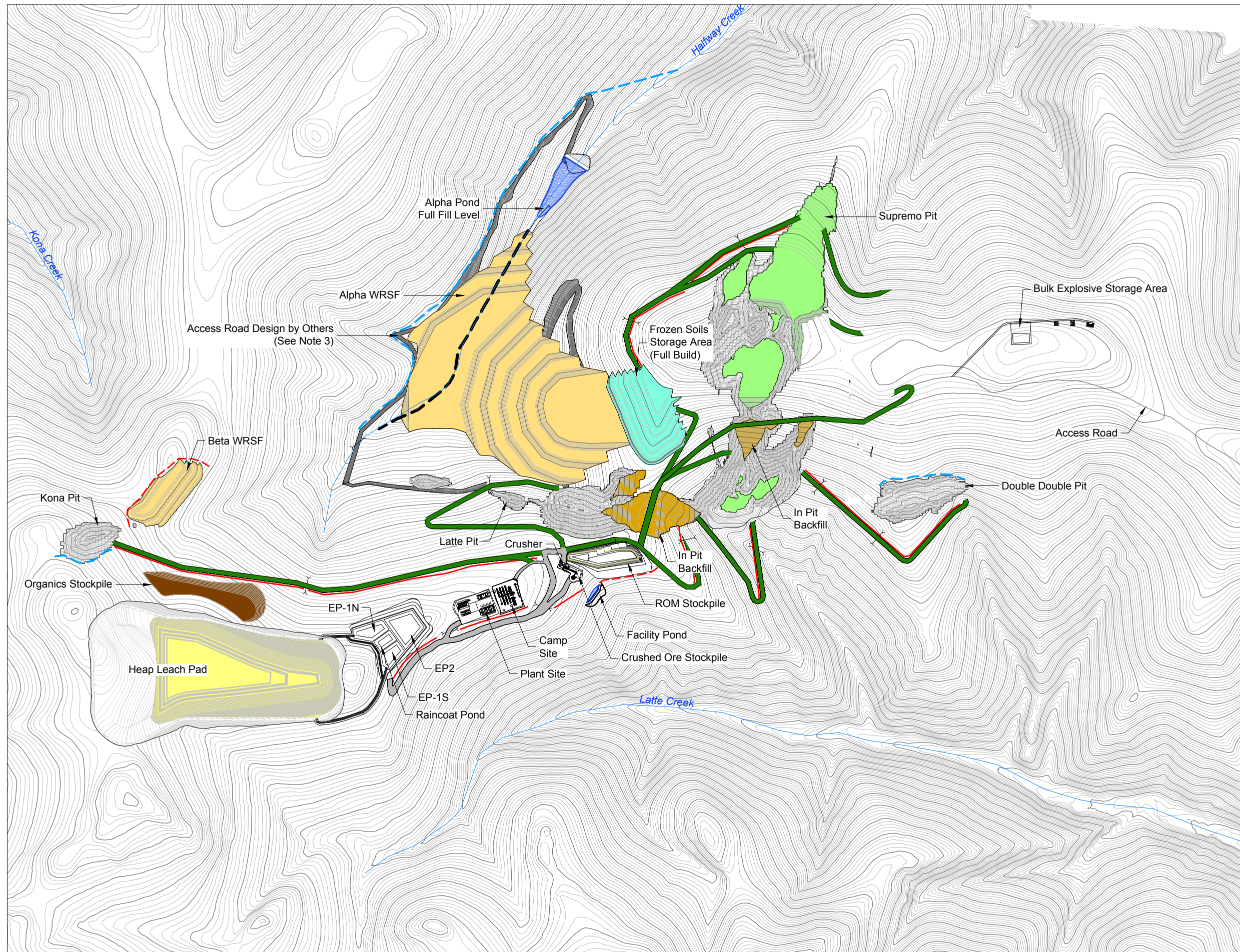
Date:
Mar 30, 2017

Drawn by:
TAH

Reviewed:
DP/TS

COFFEE GOLD MINE

Mine Site General Arrangement
at End of Year 6

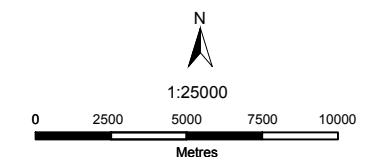


Legend

- Diversion Berm
- Rock Drain
- Road Drainage Ditch
- - - Waste Rock Collection Channel
- Active Pit
- Frozen Soils Storage Area
- Pit Backfill
- Pit Footprint
- Sedimentation Pond
- Waste Rock Storage Facility
- Heap Stack
- Access Road
- Haul Road
- Culvert

Notes

1. This figure is not intended to be a "stand-alone" document, but a visual aid to the information contained within the referenced Report. It is intended to be used in conjunction with the scope of services and limitations described therein.
2. Contours shown at a 5 meter contour interval.
3. Access road design to be finalized in next phase.



NAD 1983 UTM Zone 7N

Page Size: 11" x 17"

Figure 2A-10

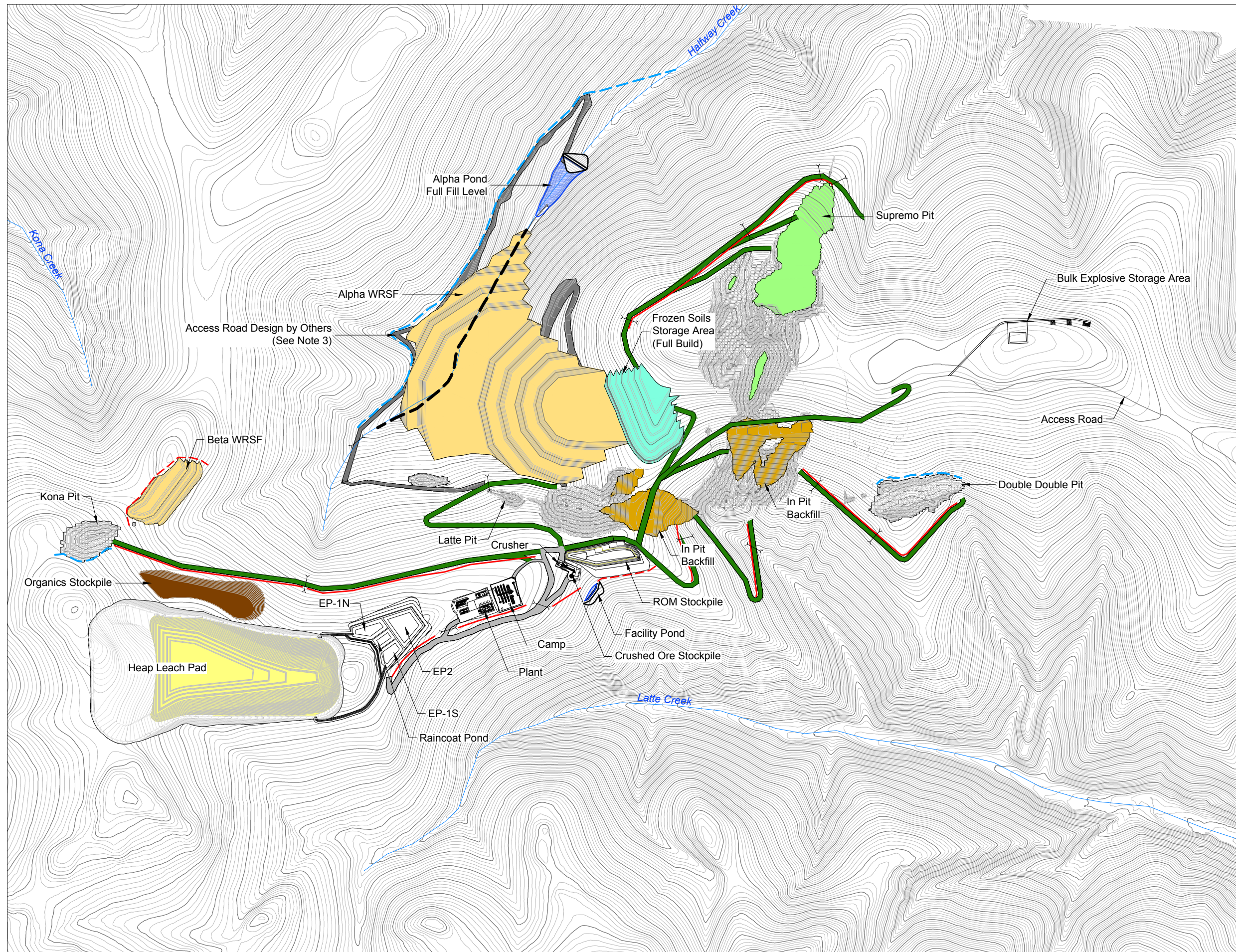
Date:
Mar 30, 2017

Drawn by:
TAH

Reviewed:
DP/TS

COFFEE GOLD MINE

Mine Site General Arrangement
at End of Year 7

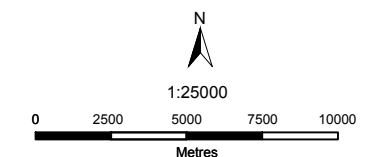


Legend

- Diversion Berm
- Rock Drain
- Road Drainage Ditch
- - - Waste Rock Collection Channel
- Active Pit
- Frozen Soils Storage Area
- Pit Backfill
- Pit Footprint
- Sedimentation Pond
- Waste Rock Storage Facility
- Heap Stack
- Access Road
- Haul Road
- Culvert

Notes

1. This figure is not intended to be a "stand-alone" document, but a visual aid to the information contained within the referenced Report. It is intended to be used in conjunction with the scope of services and limitations described therein.
2. Contours shown at a 5 meter contour interval.
3. Access road design to be finalized in next phase.



NAD 1983 UTM Zone 7N

Page Size: 11" x 17"

Figure 2A-11

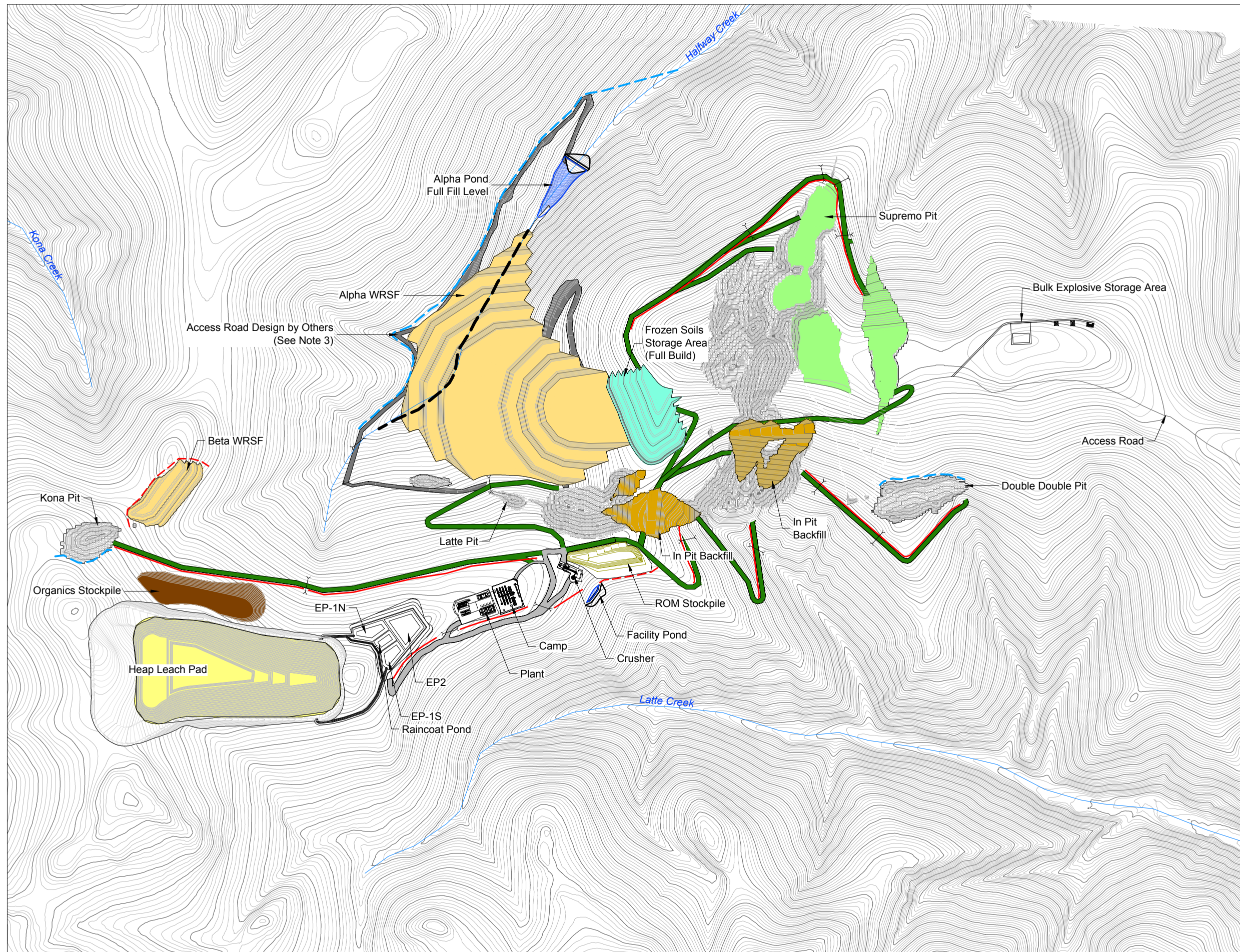
Date:
Mar 30, 2017

Drawn by:
TAH

Reviewed:
DP/TS

COFFEE GOLD MINE

Mine Site General Arrangement
at End of Year 8

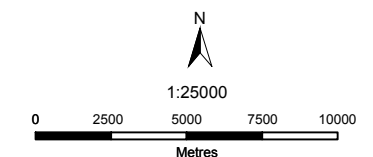


Legend

- Diversion Berm
- Rock Drain
- Road Drainage Ditch
- - - Waste Rock Collection Channel
- Active Pit
- Frozen Soils Storage Area
- Pit Backfill
- Pit Footprint
- Sedimentation Pond
- Waste Rock Storage Facility
- Heap Stack
- Access Road
- Haul Road
- Culvert

Notes

1. This figure is not intended to be a "stand-alone" document, but a visual aid to the information contained within the referenced Report. It is intended to be used in conjunction with the scope of services and limitations described therein.
2. Contours shown at a 5 meter contour interval.
3. Access Road design to be finalized in next phase.



NAD 1983 UTM Zone 7N

Page Size: 11" x 17"

Figure 2A-12

Date:
Mar 30, 2017

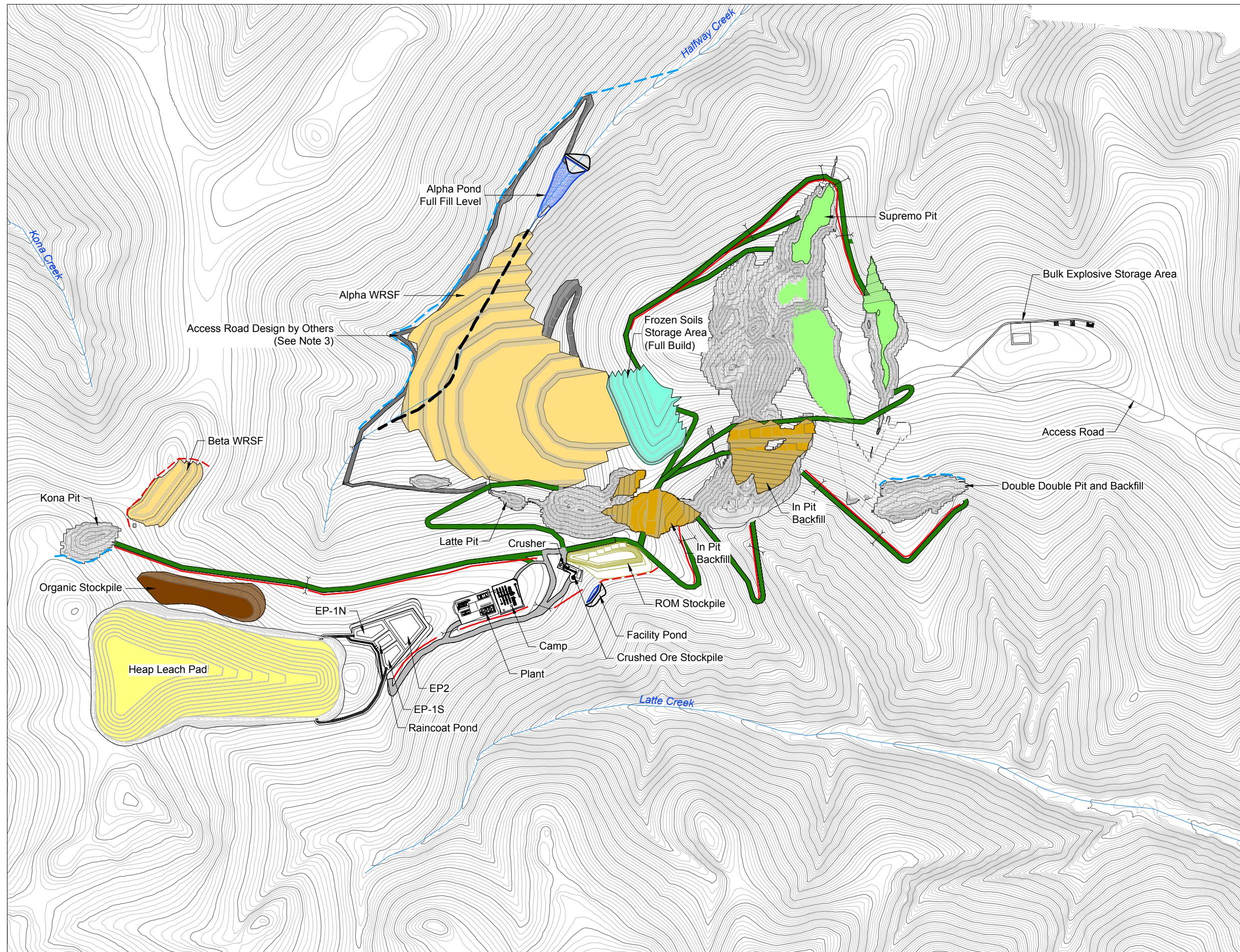
Drawn by:
T. Hays

Reviewed:
DP/TS

Mine Site General Arrangement
at End of Year 9

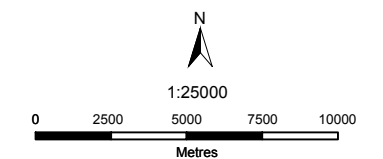
Legend

- Diversion Berm
- Rock Drain
- Road Drainage Ditch
- Waste Rock Collection Channel
- Active Pit
- Frozen Soils Storage Area
- Pit Backfill
- Pit Footprint
- Sedimentation Pond
- Waste Rock Storage Facility
- Heap Stack
- Access Road
- Haul Road
- Culvert



Notes

1. This figure is not intended to be a "stand-alone" document, but a visual aid to the information contained within the referenced Report. It is intended to be used in conjunction with the scope of services and limitations described therein.
2. Contours shown at a 5 meter contour interval.
3. Access road design to be finalized in next phase.

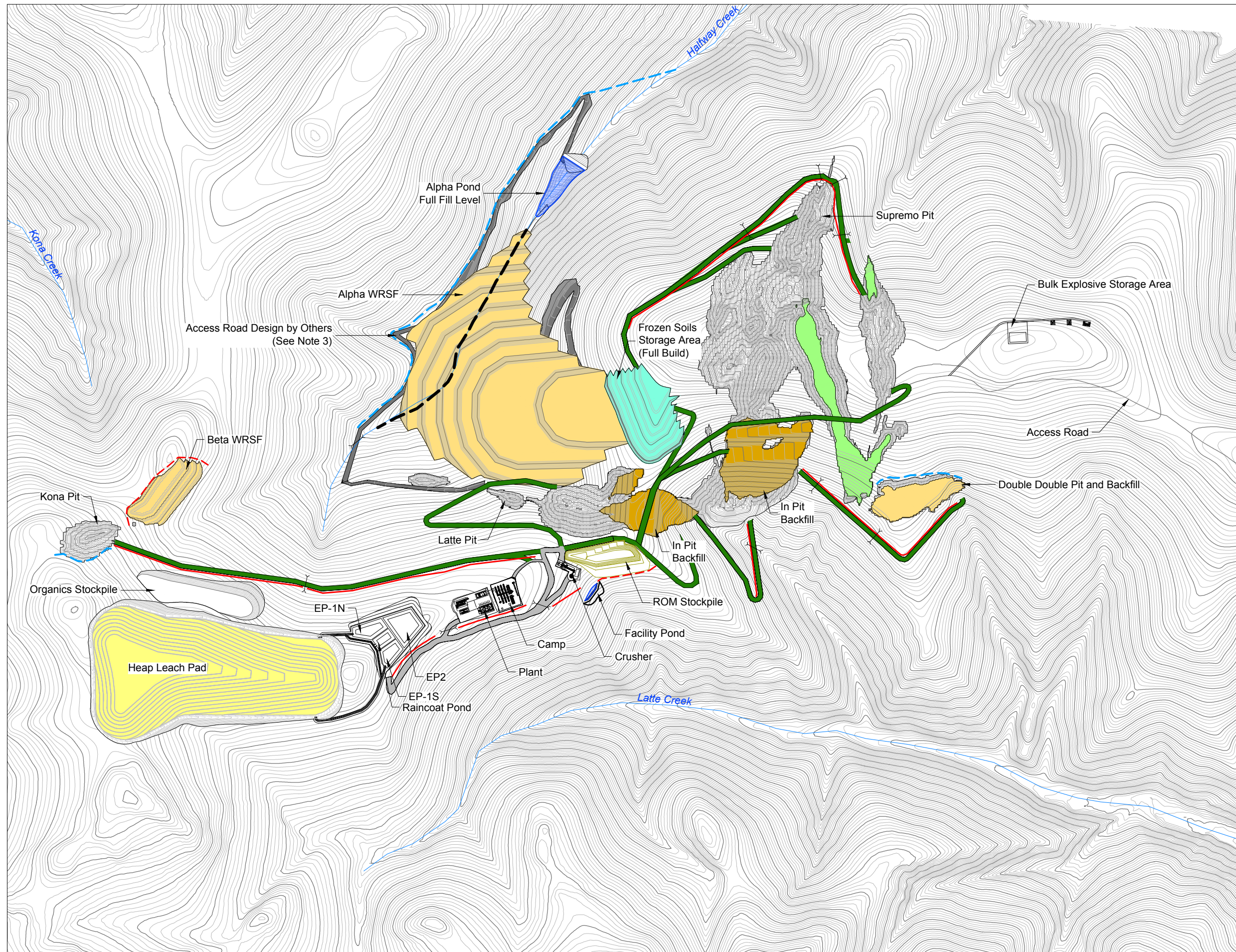


Page Size: 11" x 17"

Figure 2A-13	Date: Mar 30, 2017	Drawn by: TAH	Reviewed: DP/TS
--------------	-----------------------	------------------	--------------------

COFFEE GOLD MINE

Mine Site General Arrangement
at End of Year 10

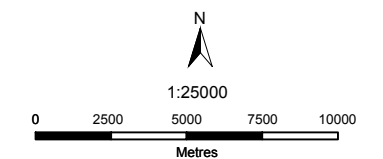


Legend

- Diversion Berm
- Rock Drain
- Road Drainage Ditch
- - - Waste Rock Collection Channel
- Active Pit
- Frozen Soils Storage Area
- Pit Backfill
- Pit Footprint
- Sedimentation Pond
- Waste Rock Storage Facility
- Heap Stack
- Access Road
- Haul Road
- Culvert

Notes

1. This figure is not intended to be a "stand-alone" document, but a visual aid to the information contained within the referenced Report. It is intended to be used in conjunction with the scope of services and limitations described therein.
2. Contours shown at a 5 meter contour interval
3. Access road design to be finalized in next phase.



NAD 1983 UTM Zone 7N

Page Size: 11" x 17"

Figure 2A-14

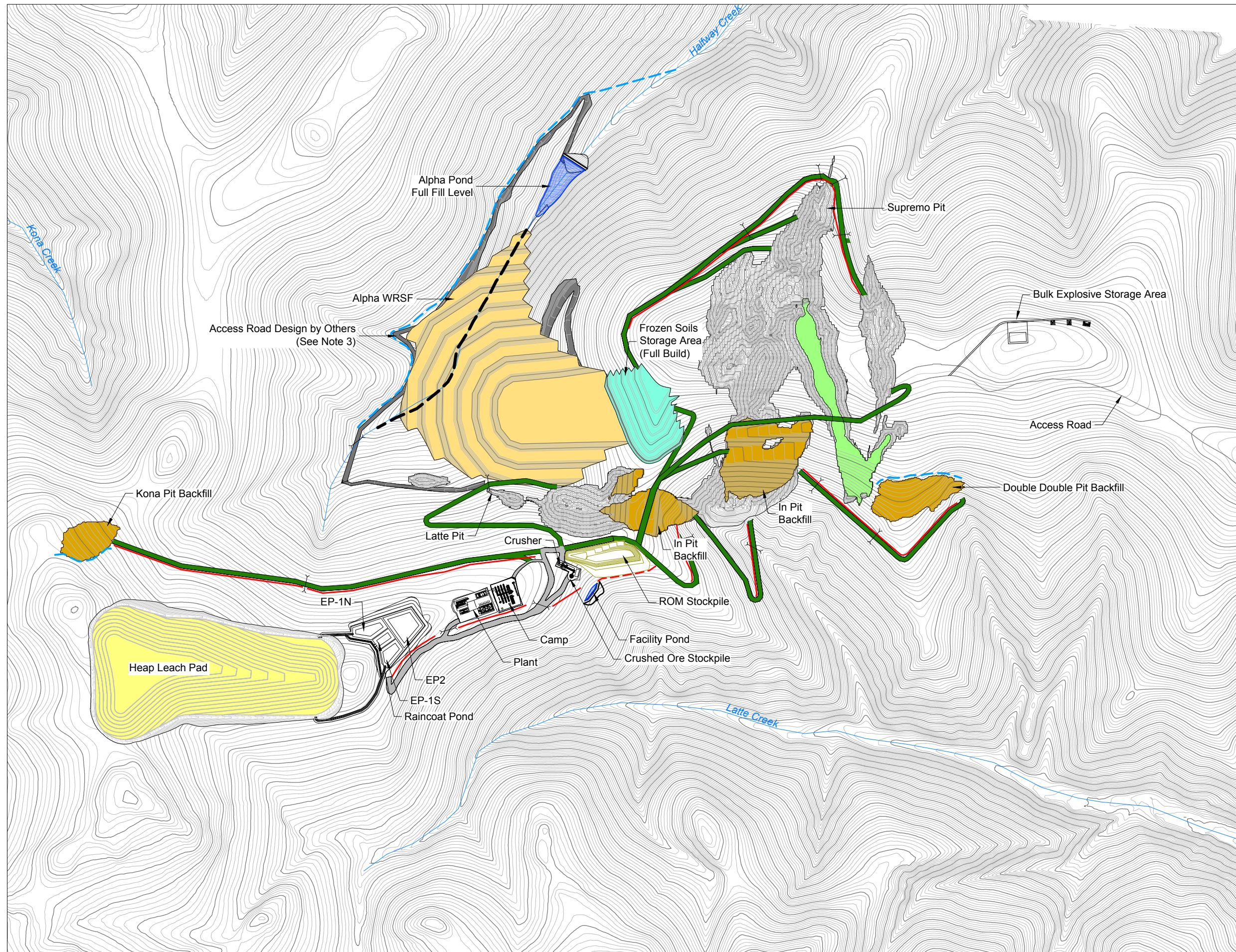
Date:
Mar 30, 2017

Drawn by:
T. Hays

Reviewed:
DP/TS

COFFEE GOLD MINE

Mine Site General Arrangement
at End of Year 11

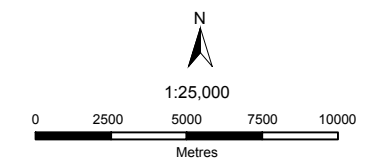


Legend

- Diversion Berm
- Rock Drain
- Road Drainage Ditch
- - - Waste Rock Collection Channel
- Active Pit
- Frozen Soils Storage Area
- Pit Backfill
- Pit Footprint
- Sedimentation Pond
- Waste Rock Storage Facility
- Heap Stack
- Access Road
- Haul Road
- Culvert

Notes

1. This figure is not intended to be a "stand-alone" document, but a visual aid to the information contained within the referenced Report. It is intended to be used in conjunction with the scope of services and limitations described therein.
2. Contours shown at a 5 meter contour interval.
3. Access Road design to be finalized in next phase.



NAD 1983 UTM Zone 7N

Page Size: 11" x 17"

Figure 2A-15

Date:
Mar 30, 2017

Drawn by:
T. Hays

Reviewed:
DP/TS