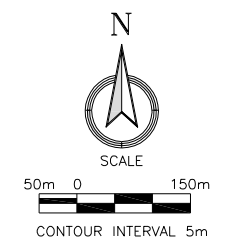
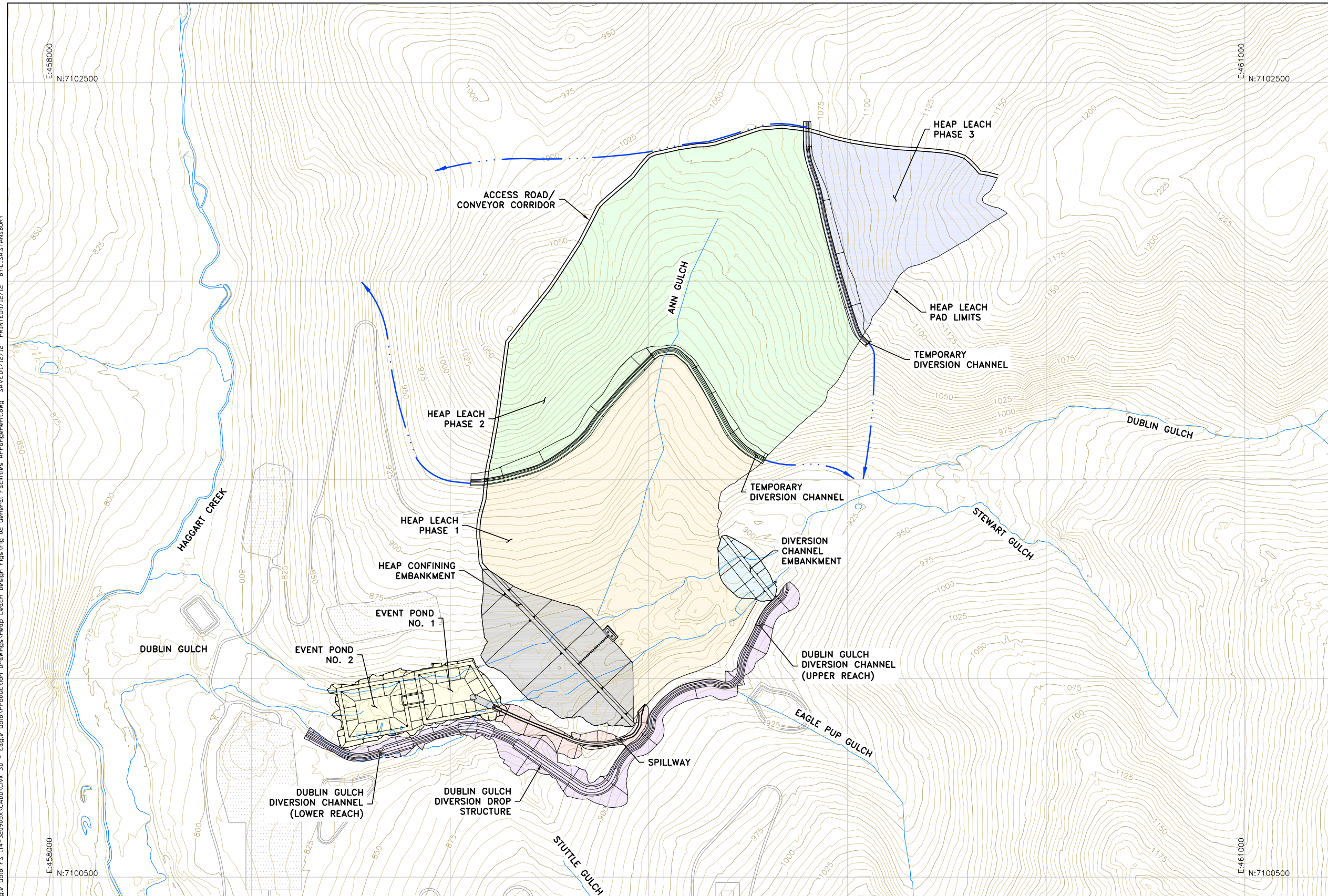


X:\Clients\Victoria Gold Corp\Eagle Gold FS 114-320905X\CADD\Civil 3D - Eagle Gold\Production Drawings\Heap Leach Design Figs\Fig 02 General Facilities Arrangement.dwg - Saved/12/12/12 BY:LSASTANSBURY



GENERAL LEGEND

- ☉ - CENTERLINE
- DIA. - DIAMETER
- EL. - ELEVATION
- GCL - GEOSYNTHETIC CLAY LINER
- HDPE - HIGH DENSITY POLYETHYLENE
- LCRS - LEAK COLLECTION AND REMOVAL SYSTEM
- LLDPE - LINEAR LOW DENSITY POLYETHYLENE
- MAX. - MAXIMUM
- MIN. - MINIMUM
- NOM. - NOMINAL
- ODF - OVERLINER DRAIN FILL
- PE - POLYETHYLENE
- ROM - RUN-OF-MINE
- TYP. - TYPICAL
- 50m - DIMENSION IN METERS
- 2.5:1 - 2.5 HORIZONTAL TO 1 VERTICAL SLOPE
- ~ - APPROXIMATELY
- 1020— EXISTING CONTOURS (m)
- 1020— PROPOSED GRADING CONTOURS (m)
- — — EXISTING ROAD
- — — EXISTING TELEPHONE LINE (OVERHEAD)
- — — EXISTING ELECTRIC LINE (OVERHEAD)
- — — EXISTING DRAINAGE
- CP-5 CONTROL POINT
- — — CHANNEL
- — — DRAINAGE CHANNEL
- HEAP EMBANKMENT
- DIVERSION CHANNEL EMBANKMENT
- EVENT PONDS
- DIVERSION CHANNEL
- SPILLWAY
- PHASE 1 PAD
- PHASE 2 PAD
- PHASE 3 PAD

Rev	Description	BY	Date

Rev	Description	BY	Date

Scale: As Shown On 22x34
 Designed by: RRC
 Drawn by: JCP/LMS
 Checked by: TLM
 Approved by: TLM

Issued for:

Issued by:

3031 West Ina Road
 Tucson, Arizona 85741
 (520) 297-7723 (520) 297-7724 fax

Title: **EAGLE GOLD PROJECT
 HEAP LEACH FACILITY
 GENERAL FACILITIES ARRANGEMENT**

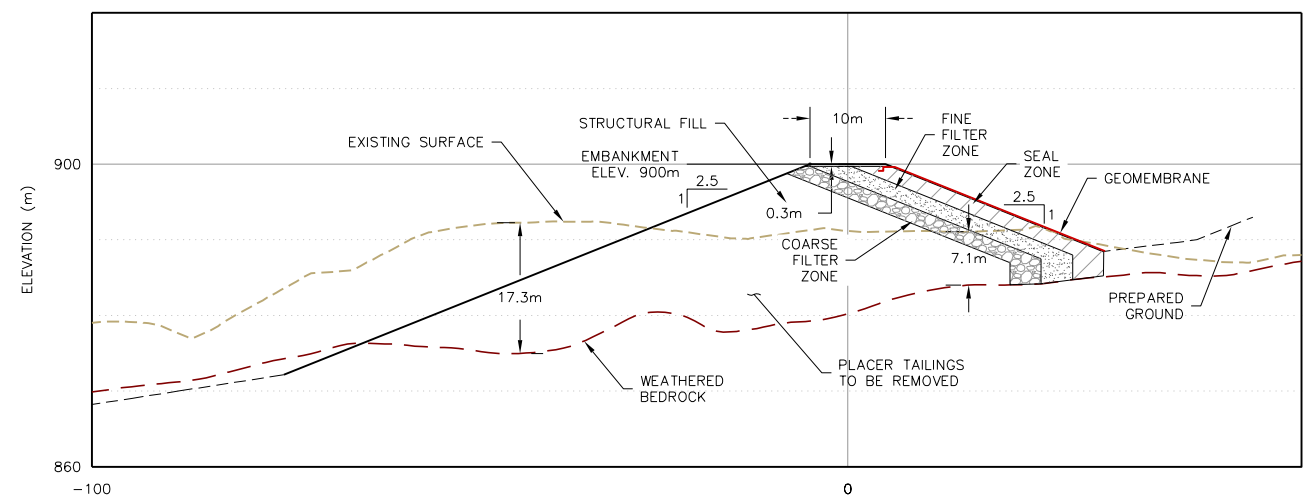
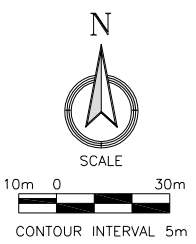
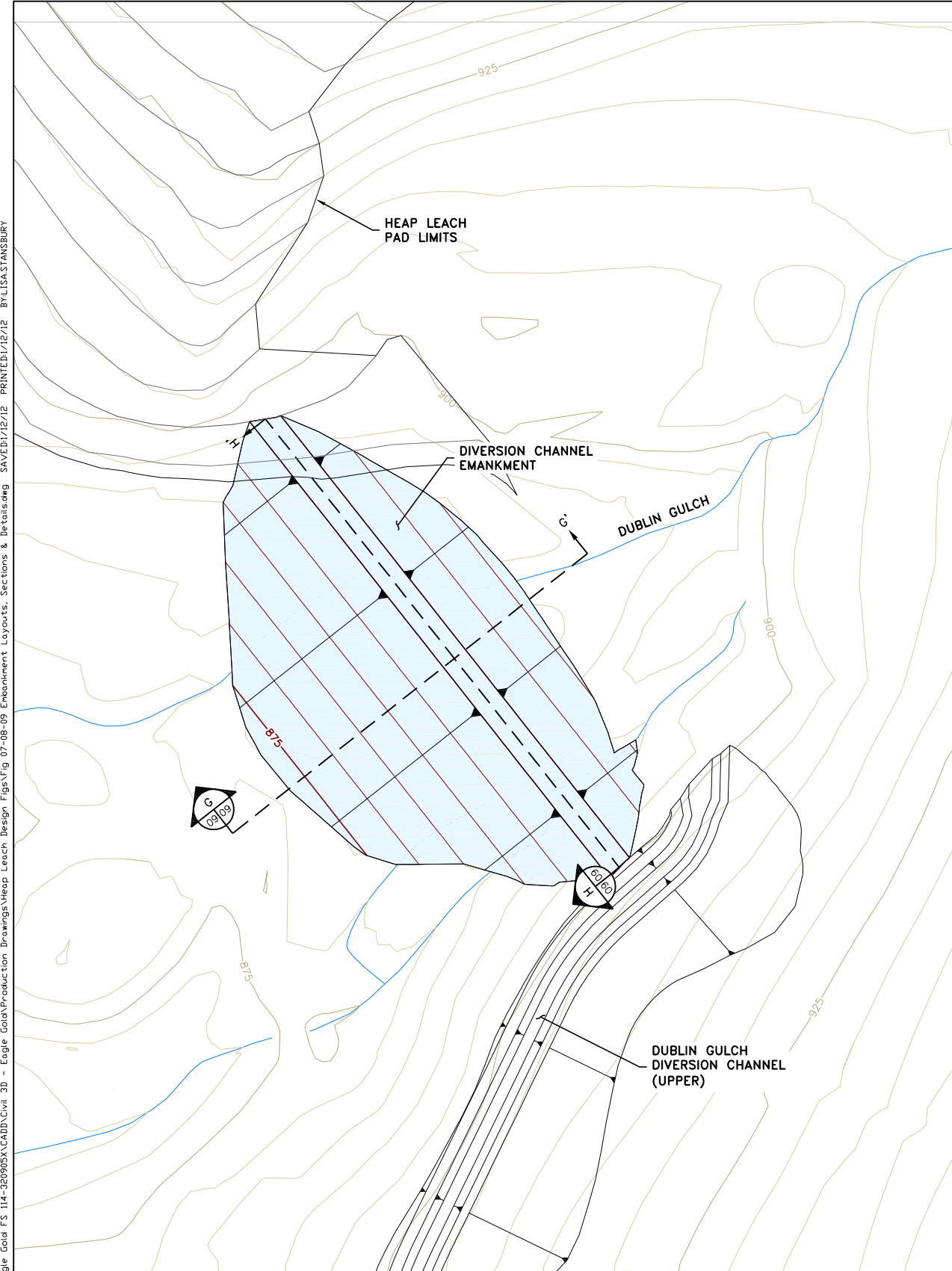
Project: EAGLE GOLD PROJECT HEAP LEACH FACILITY
 Project no.: 320905X
 Figure no.: **02**

Location: DUBLIN GULCH, YUKON, CANADA
 Date: 01/12
 SHEET 02 OF 22

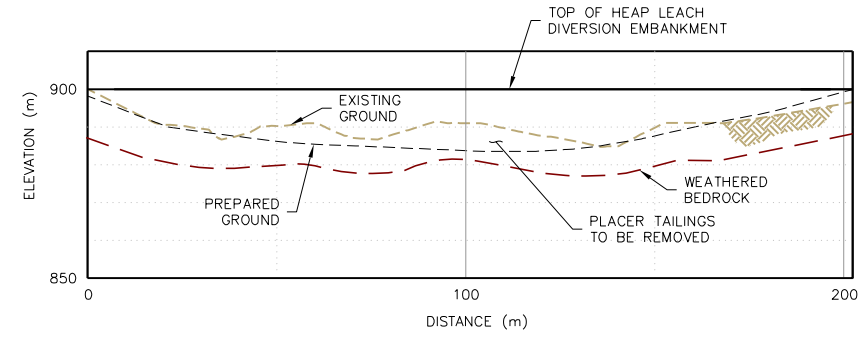
DRAFT

REVISION

X:\Clients\Victoria Gold Corp\Eagle Gold FS 114-320905\VCADD\Civil 3D - Eagle Gold\Production Drawings\Heap Leach Design Figs\Fig 07-08-09 Embankment Layouts, Sections & Details.dwg SAVEDI/12/12 PRINTED/12/12 BY:LISA STANSBURY



G
09/09 **DIVERSION CHANNEL EMBANKMENT TYPICAL SECTION**
SCALE: 1cm=5m (22x34 FORMAT)



H
09/09 **HEAP EMBANKMENT TYPICAL SECTION**
SCALE: 1cm=10m (22x34 FORMAT)

Rev	Description	BY	Date

Rev	Description	BY	Date

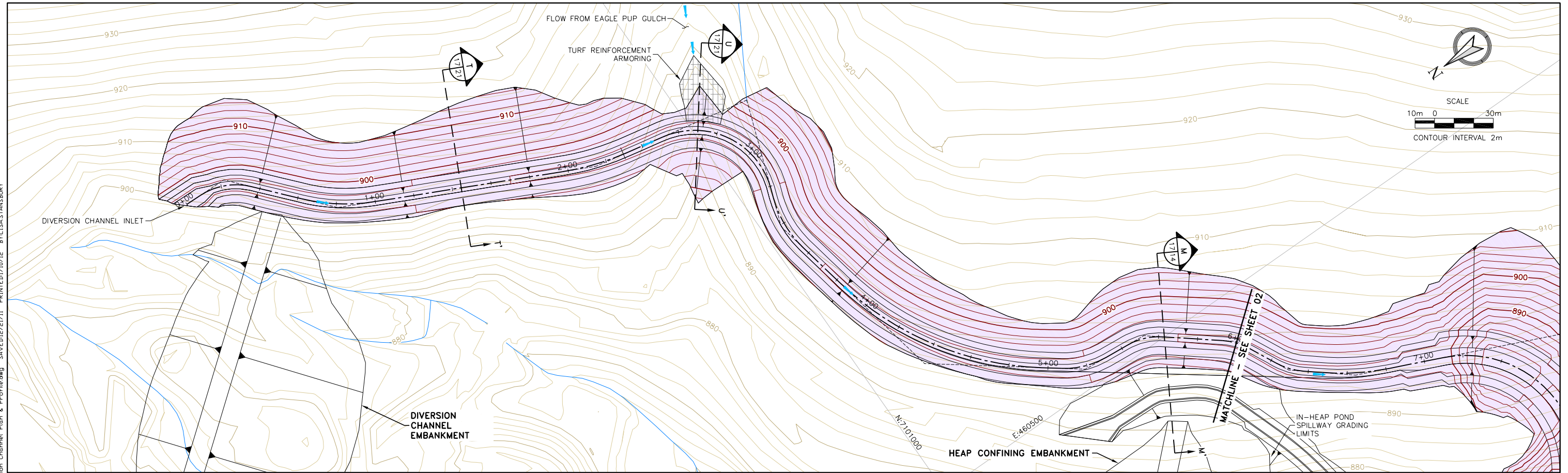
Scale: As Shown On 22x34
 Designed by: RRC
 Drawn by: JCP/LMS
 Checked by: TLM
 Approved by: TLM



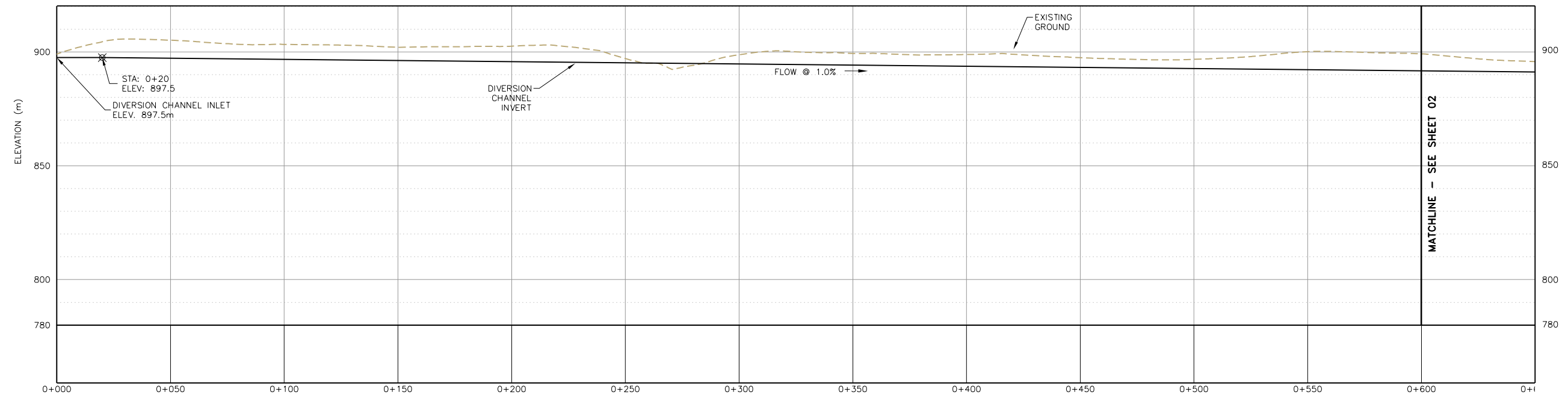
EAGLE GOLD PROJECT HEAP LEACH FACILITY DIVERSION CHANNEL EMBANKMENT PLAN & SECTION		
Project: EAGLE GOLD PROJECT HEAP LEACH FACILITY	Project no.: 320905X	Figure no.: 09
Location: DUBLIN GULCH, YUKON, CANADA	Date: 01/12	SHEET 9 OF 22



X:\Clients\Victoria Gold Corp\Eagle Gold FS 114-320905X\CADD\Civil 3D - Eagle Gold\Production Drawings\Heap Leach Design Figs\Fig 17-18-19 Diversion Channel Plan & Profile.dwg - SAVED:12/21/11 - PRINTED:10/12 BY: LISASTANSBURY



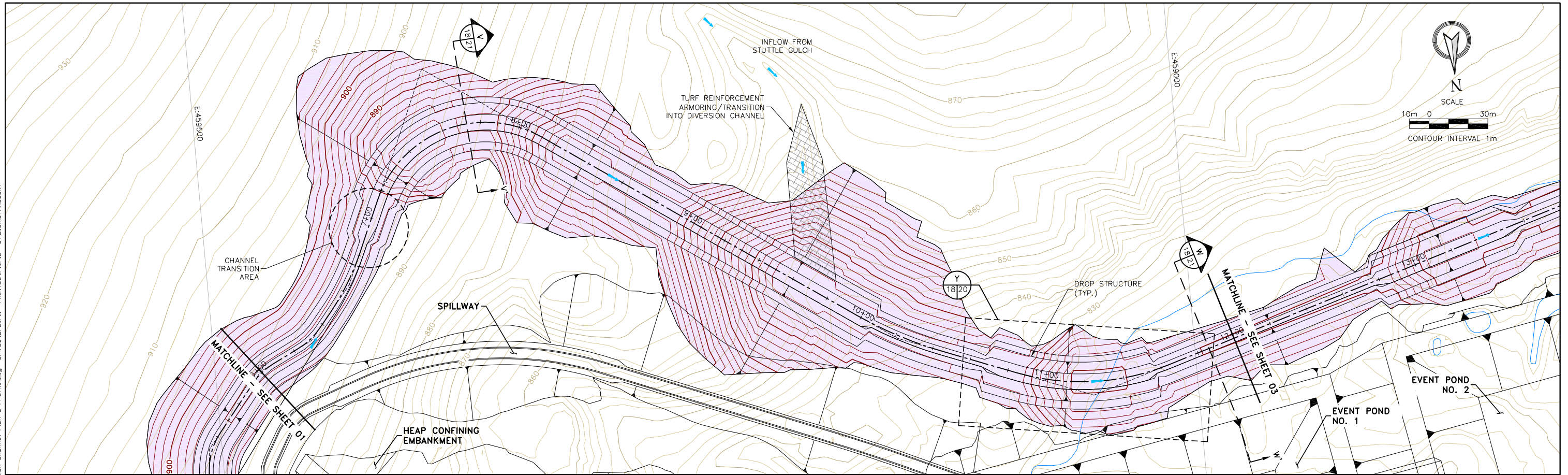
STA. 0+00-6+00 DUBLIN GULCH DIVERSION CHANNEL PLAN
SCALE: 1cm=10m (22x34 FORMAT)



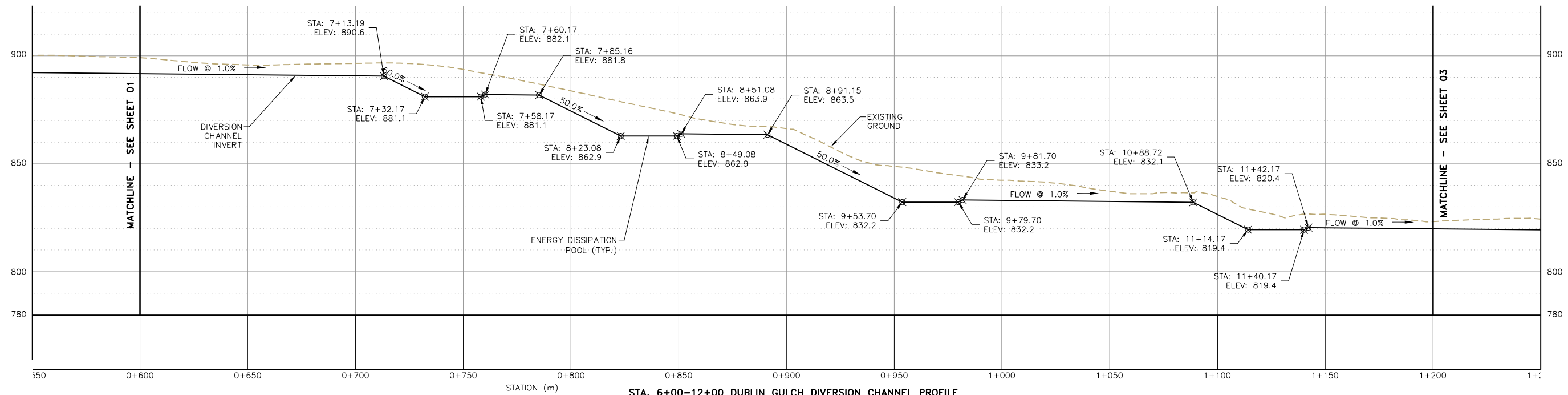
STA. 0+00-6+00 DUBLIN GULCH DIVERSION CHANNEL PROFILE
SCALE: 1cm=10m (22x34 FORMAT)

		EAGLE GOLD PROJECT DUBLIN GULCH DIVERSION CHANNEL PLAN & PROFILE		
		Project: EAGLE GOLD PROJECT HEAP LEACH FACILITY Location: DUBLIN GULCH, YUKON, CANADA	Project no.: 320905X Date: 01/12	

X:\Clients\Victoria Gold Corp\Eagle Gold FS 114-320905X\CADD\Civil 3D - Eagle Gold\Production Drawings\Heap Leach Design Figs\Fig 17-18-19 Diversion Channel Plan & Profile.dwg - SAVED:12/21/11 - PRINTED:10/12 BY: LISASTANSBURY



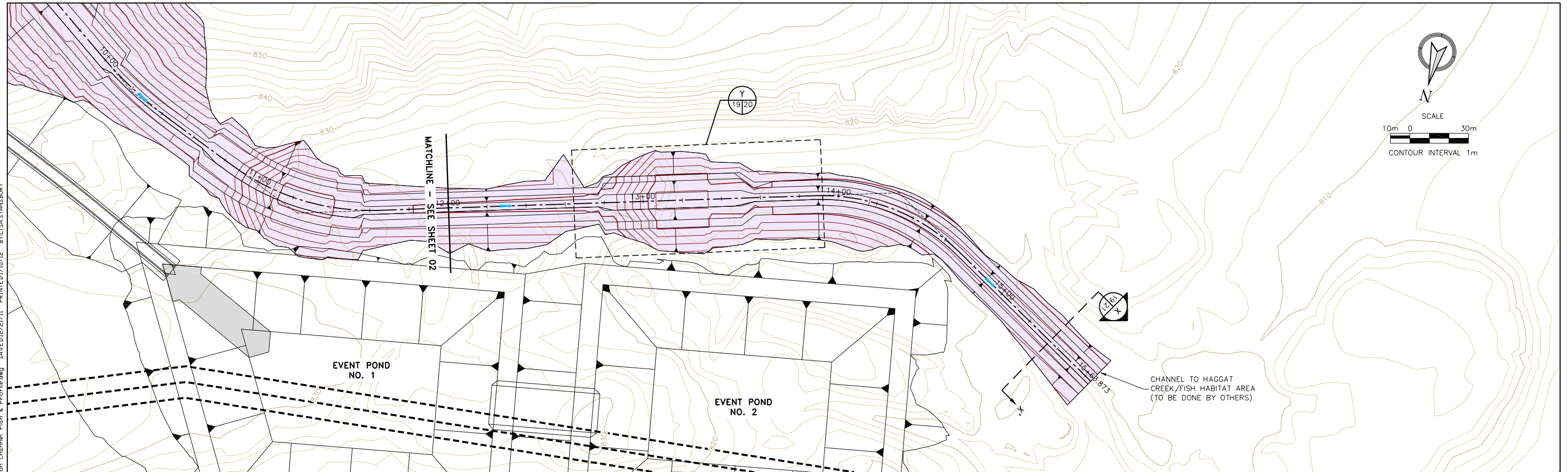
STA. 6+00-12+00 DUBLIN GULCH DIVERSION CHANNEL PLAN
SCALE: 1cm=10m (22x34 FORMAT)



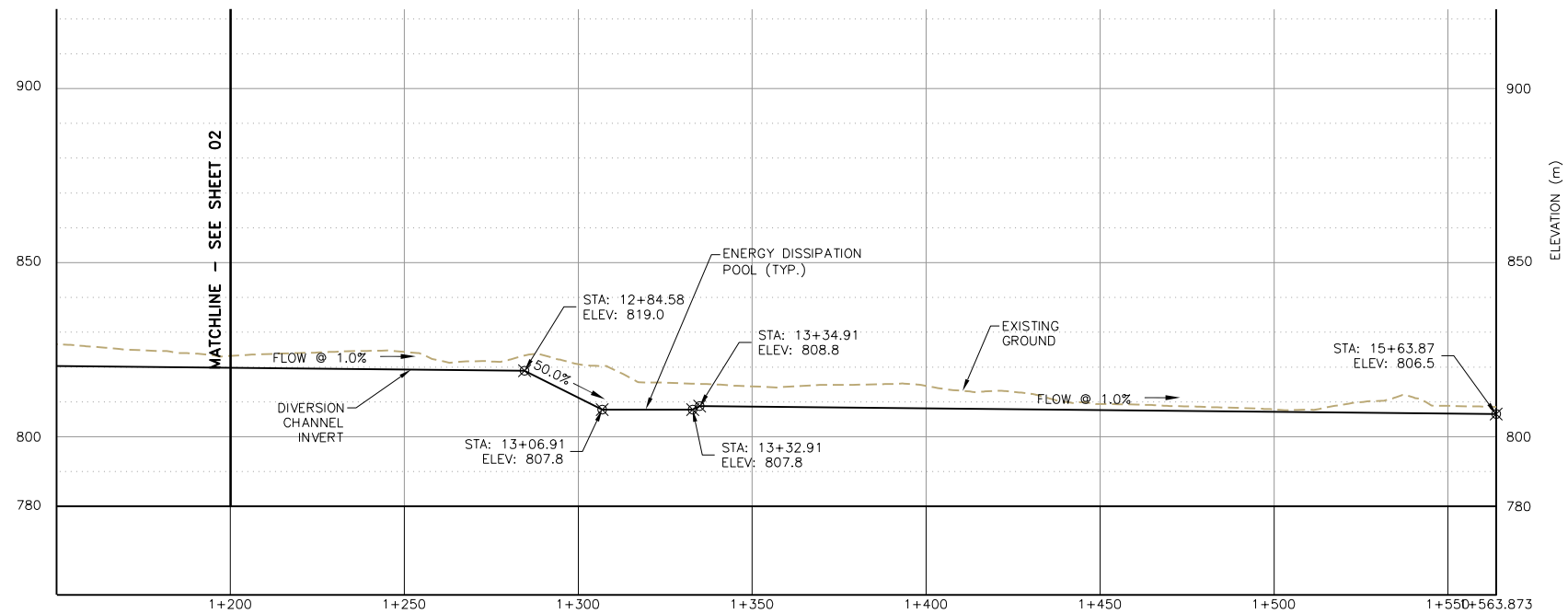
STA. 6+00-12+00 DUBLIN GULCH DIVERSION CHANNEL PROFILE
SCALE: 1cm=20m (22x34 FORMAT)

Issued for: 	Issued by: 	Title: EAGLE GOLD PROJECT HEAP LEACH FACILITY DUBLIN GULCH DIVERSION CHANNEL PLAN & PROFILE		 REVISION
		Project: EAGLE GOLD PROJECT HEAP LEACH FACILITY	Project no.: 320905X	
Location: DUBLIN GULCH, YUKON, CANADA		Date: 01/12	SHEET 18 OF 22	

X:\Clients\Victoria Gold Corp\Eagle Gold FS 114-320905X\CADD\Civil 3D - Eagle Gold\Production Drawings\Heap Leach Design Figs\Fig 17-18-19 Diversion Channel Plan & Profile.dwg - Saved: 12/21/11 - PRINTED: 10/12 BY: LISASTANSBURY



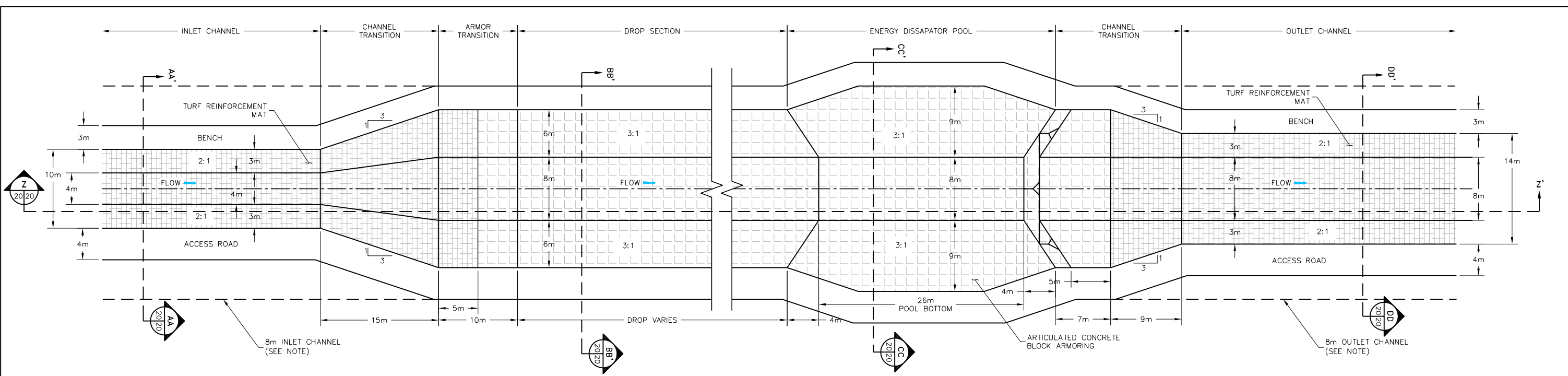
STA. 12+00-15+56.97 DUBLIN GULCH DIVERSION CHANNEL PLAN
SCALE: 1cm=10m (22x34 FORMAT)



STA. 12+00-15+56.97 DUBLIN GULCH DIVERSION CHANNEL PROFILE
SCALE: 1cm=20m (22x34 FORMAT)

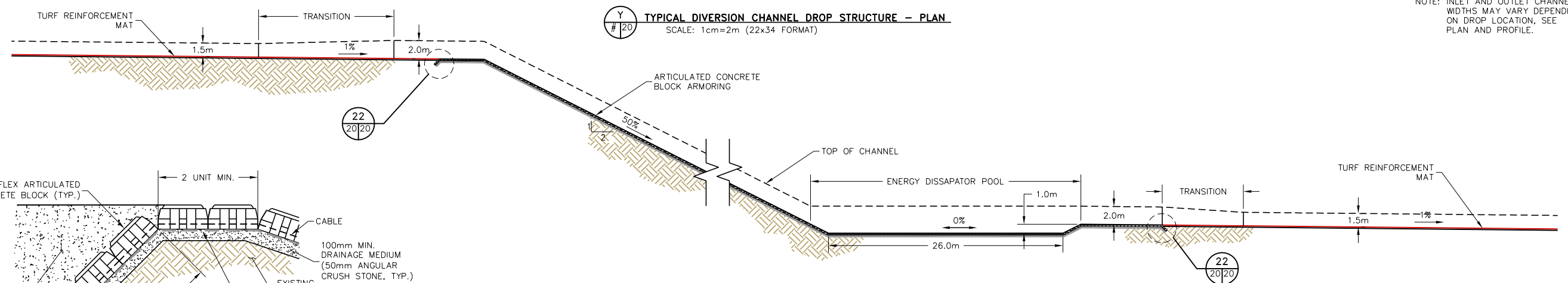
		EAGLE GOLD PROJECT HEAP LEACH FACILITY DUBLIN GULCH DIVERSION CHANNEL PLAN & PROFILE		
		Project: EAGLE GOLD PROJECT HEAP LEACH FACILITY	Project no.: 320905X	
Location: DUBLIN GULCH, YUKON, CANADA		Date: 01/12	SHEET 19 OF 22	

X:\Clients\Victoria Gold Corp\Eagle Gold FS 114-320905X\CADD\Civil 3D - Eagle Gold\Production Drawings\Heap Leach Design Figs\Fig 20-21 Diversion Channel Sections & Details.dwg SAVED:12/21/11 PRINTED:17/01/12 BY:LSA-STANBURY

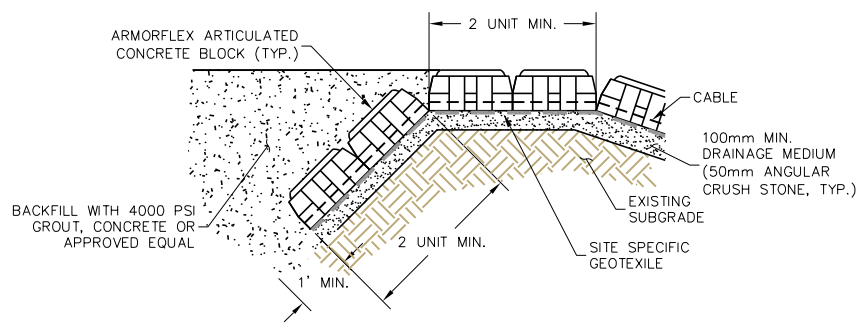


Y
20
TYPICAL DIVERSION CHANNEL DROP STRUCTURE - PLAN
SCALE: 1cm=2m (22x34 FORMAT)

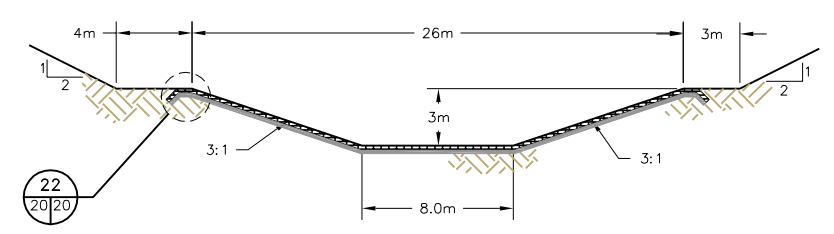
NOTE: INLET AND OUTLET CHANNEL WIDTHS MAY VARY DEPENDING ON DROP LOCATION. SEE PLAN AND PROFILE.



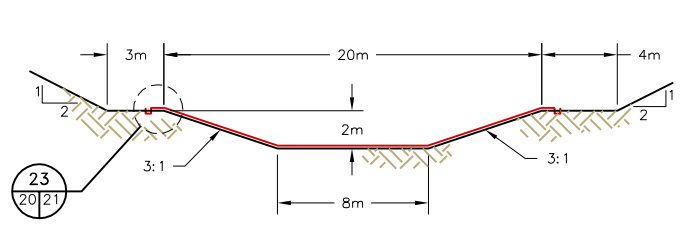
Z
20/20
TYPICAL DIVERSION CHANNEL DROP STRUCTURE - PROFILE
SCALE: 1cm=2m (22x34 FORMAT)



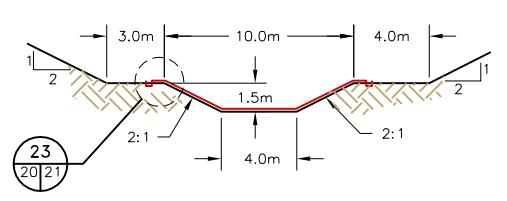
22
20/20
ARMORFLEX TOP OF SLOPE - ANCHOR DETAIL
SCALE: 1cm=5m (22x34 FORMAT)



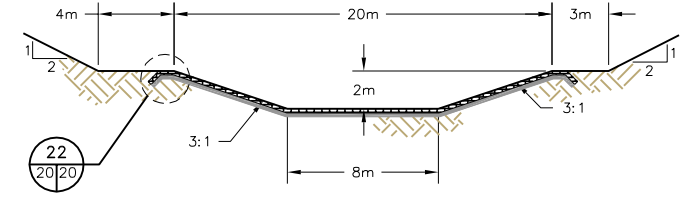
CC
20/20
TYPICAL POOL SECTION
SCALE: 1cm=2m (22x34 FORMAT)



DD
20/21
TYPICAL DIVERSION CHANNEL SECTION
SCALE: 1cm=2m (22x34 FORMAT)



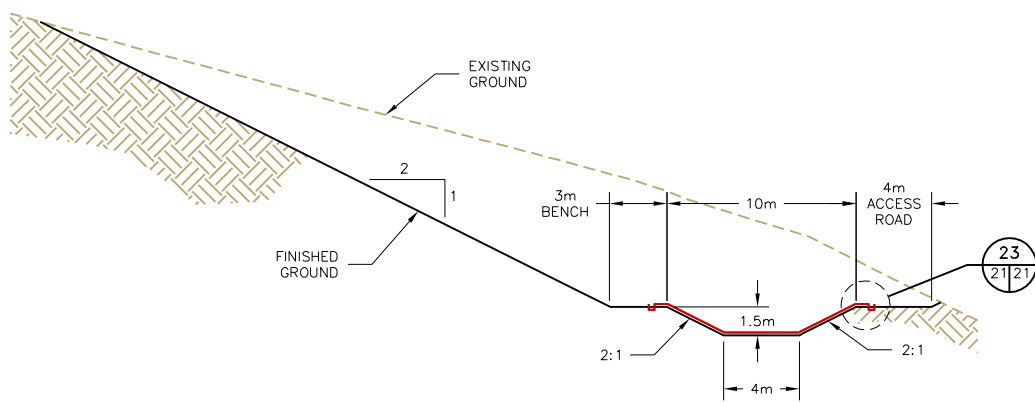
AA
20/20
TYPICAL DIVERSION CHANNEL SECTION
SCALE: 1cm=2m (22x34 FORMAT)



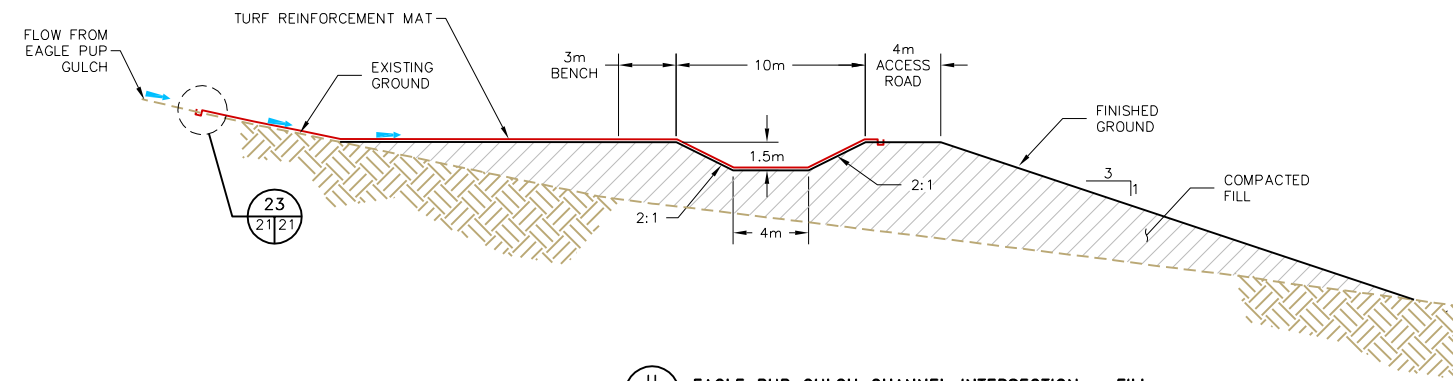
BB
20/20
TYPICAL DROP SECTION
SCALE: 1cm=2m (22x34 FORMAT)

<p>Issued for:</p>	<p>Issued by:</p> <p>3031 West Ina Road Tucson, Arizona 85741 (520) 297-7723 (520) 297-7724 fax</p>	<p>Title:</p> <p>EAGLE GOLD PROJECT HEAP LEACH FACILITY DUBLIN GULCH DIVERSION CHANNEL SECTIONS & DETAILS</p>	
<p>Project: EAGLE GOLD PROJECT HEAP LEACH FACILITY</p>		<p>Project no.: 320905X</p>	<p>Figure no.: 20</p>
<p>Location: DUBLIN GULCH, YUKON, CANADA</p>		<p>Date: 01/12</p>	<p>SHEET 20 OF 22</p>

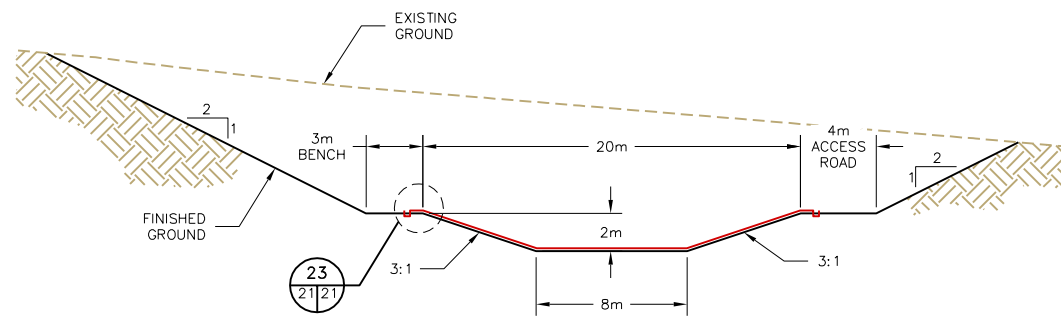
X:\Clients\Victoria Gold Corp\Eagle Gold FS 114-320905X\CADD\Civil 3D - Eagle Gold\Production Drawings\Heap Leach Design Figs\Fig 20-21 Diversion Channel Sections & Details.dwg - Saved/21/11 PRINTED/10/12 BY:LSA-STANSBURY



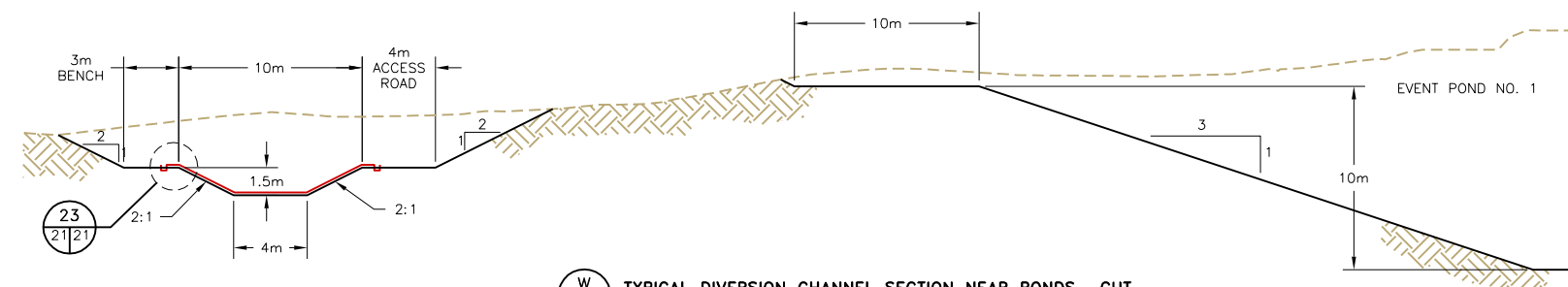
T TYPICAL DIVERSION CHANNEL SECTION - CUT
SCALE: 1cm=5m (22x34 FORMAT)



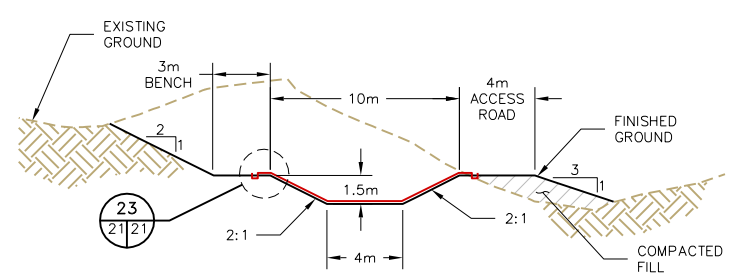
U EAGLE PUP GULCH CHANNEL INTERSECTION - FILL
SCALE: 1cm=5m (22x34 FORMAT)



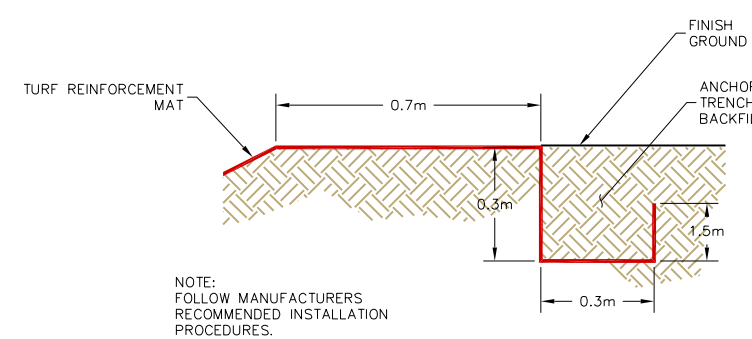
V TYPICAL DIVERSION CHANNEL SECTION - CUT
SCALE: 1cm=5m (22x34 FORMAT)



W TYPICAL DIVERSION CHANNEL SECTION NEAR PONDS - CUT
SCALE: 1cm=5m (22x34 FORMAT)



X TYPICAL DIVERSION CHANNEL SECTION - CUT & FILL
SCALE: 1cm=5m (22x34 FORMAT)



Z CHANNEL ARMOR ANCHOR TRENCH DETAIL
SCALE: 1cm=5m (22x34 FORMAT)

Issued for: 	Issued by: 	Title: EAGLE GOLD PROJECT HEAP LEACH FACILITY DUBLIN GULCH DIVERSION CHANNEL SECTIONS & DETAILS		
		Project: EAGLE GOLD PROJECT HEAP LEACH FACILITY	Project no.: 320905X	
Location: DUBLIN GULCH, YUKON, CANADA		Date: 01/12	SHEET 21 OF 22	

