

**LEGEND**

- Site Infrastructure & Facilities
- Haggart Creek Access Road
- Watercourses
- - - Watercourses (to be diverted or infilled)
- ▨ Fish Habitat Compensation Area
- ▭ Reclamation Materials Stockpile Areas
- Concrete Foundations

SCALE 1:12,500

**NOTES**

- All elevations are in meters.
- Contour data received from Underhill (February 2011) UTM NAD 83.
- 25 m Contour intervals Shown.

**STATUS**  
ISSUED FOR REVIEW

**CLIENT**

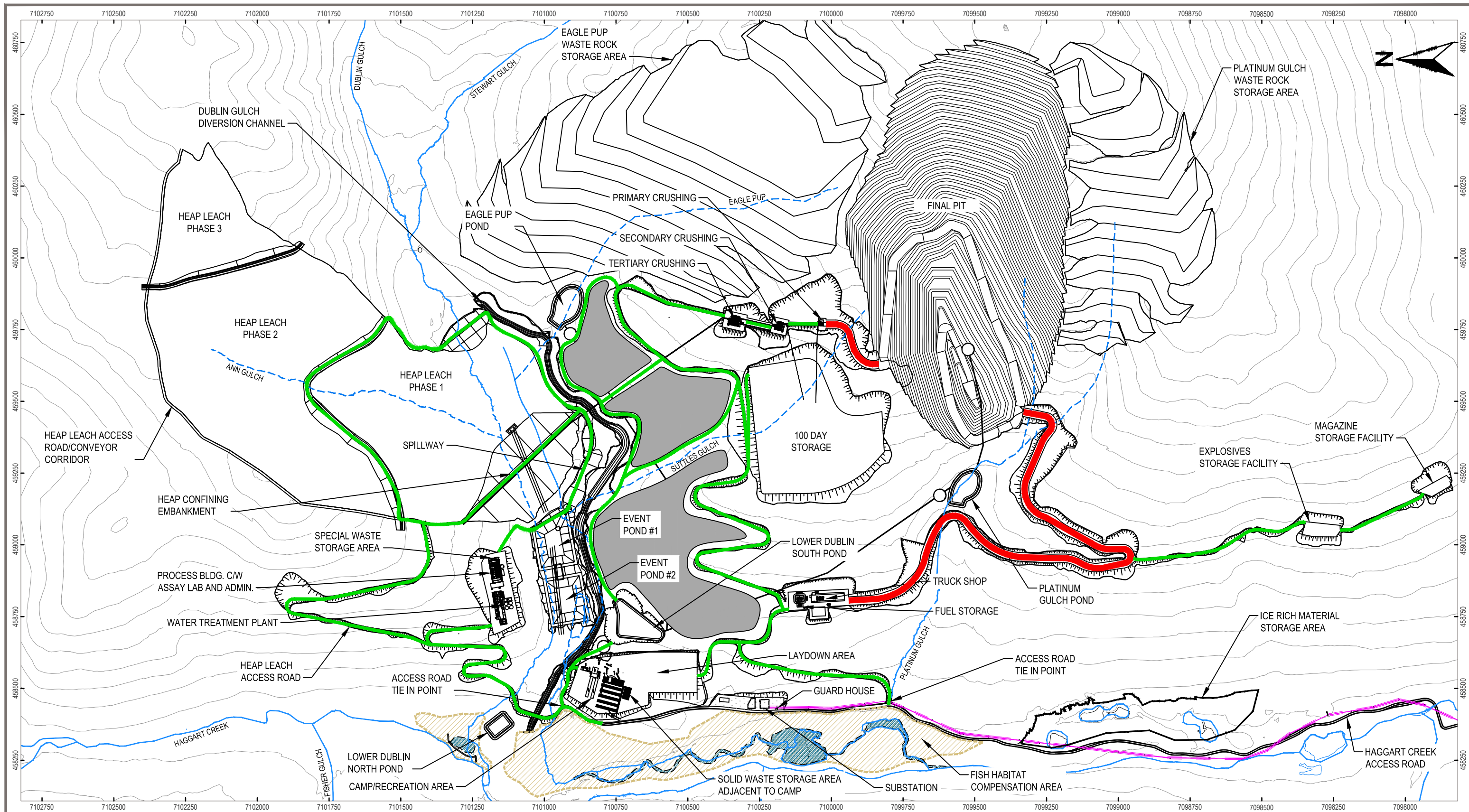
**PROJECTION** UTM Zone 8    **DATUM** NAD 83

**EAGLE GOLD PROJECT  
YUKON TERRITORY**

Stage 1 Construction - Concrete Foundations

<b>FILE NO.</b> V23201707	<b>DWN</b> SF	<b>CKD</b> TG	<b>REV</b> 0
<b>OFFICE</b> EBA-VANC	<b>DATE</b> May 7, 2013		

**Figure 5.5-1**



**LEGEND**

- Site Infrastructure & Facilities
- Haggart Creek Access Road
- Main Haul Roads (31 m width gravel surface)
- Secondary Roads (6-8 m width gravel surface)
- Watercourses
- Watercourses (to be diverted or infilled)
- Fish Habitat Compensation Area
- Reclamation Materials Stockpile Areas
- Transmission Line

SCALE 1:12,500

**NOTES**

- All elevations are in meters.
- Contour data received from Underhill (February 2011) UTM NAD 83.
- 25 m Contour intervals Shown.

**STATUS**  
ISSUED FOR REVIEW

**CLIENT**

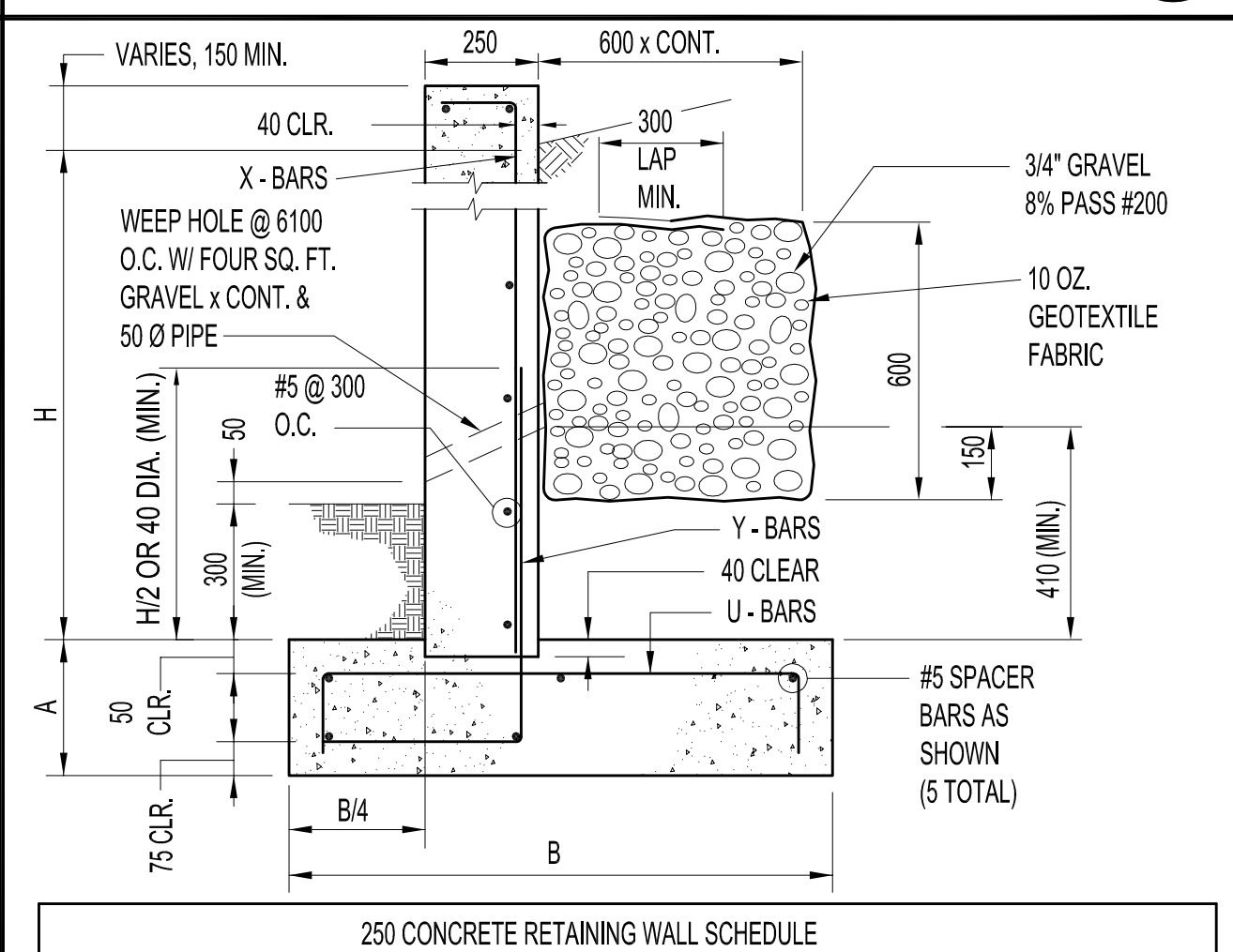
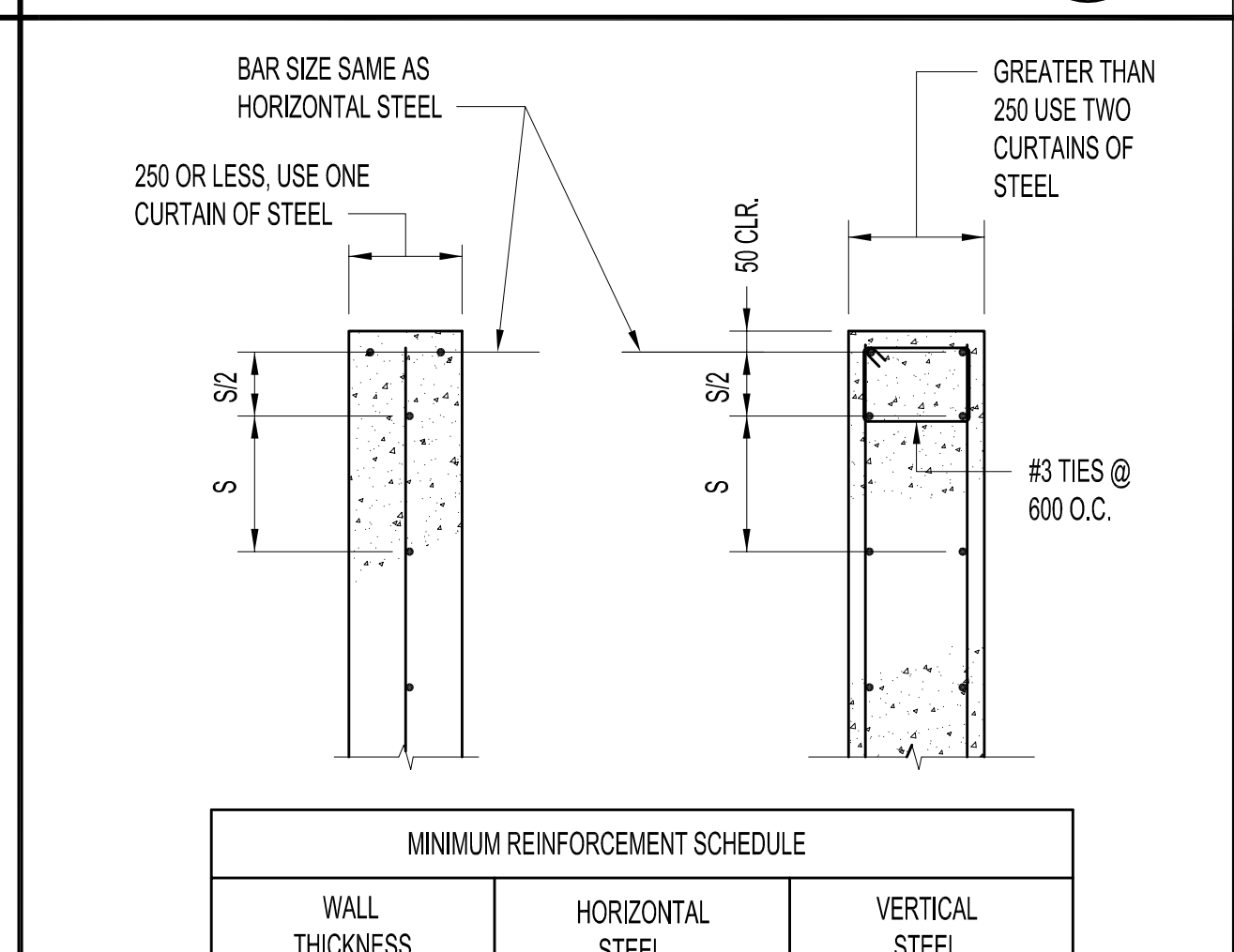
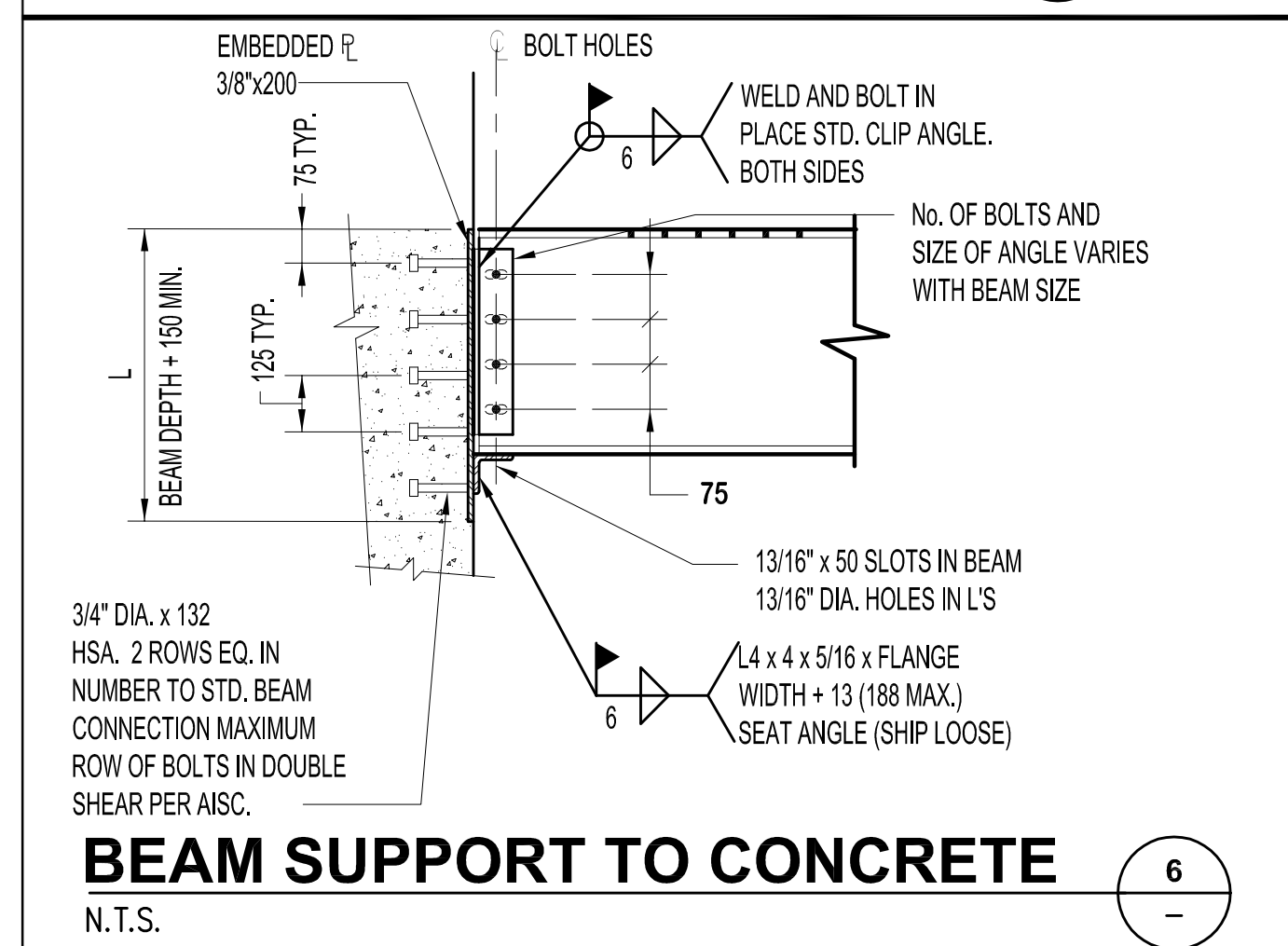
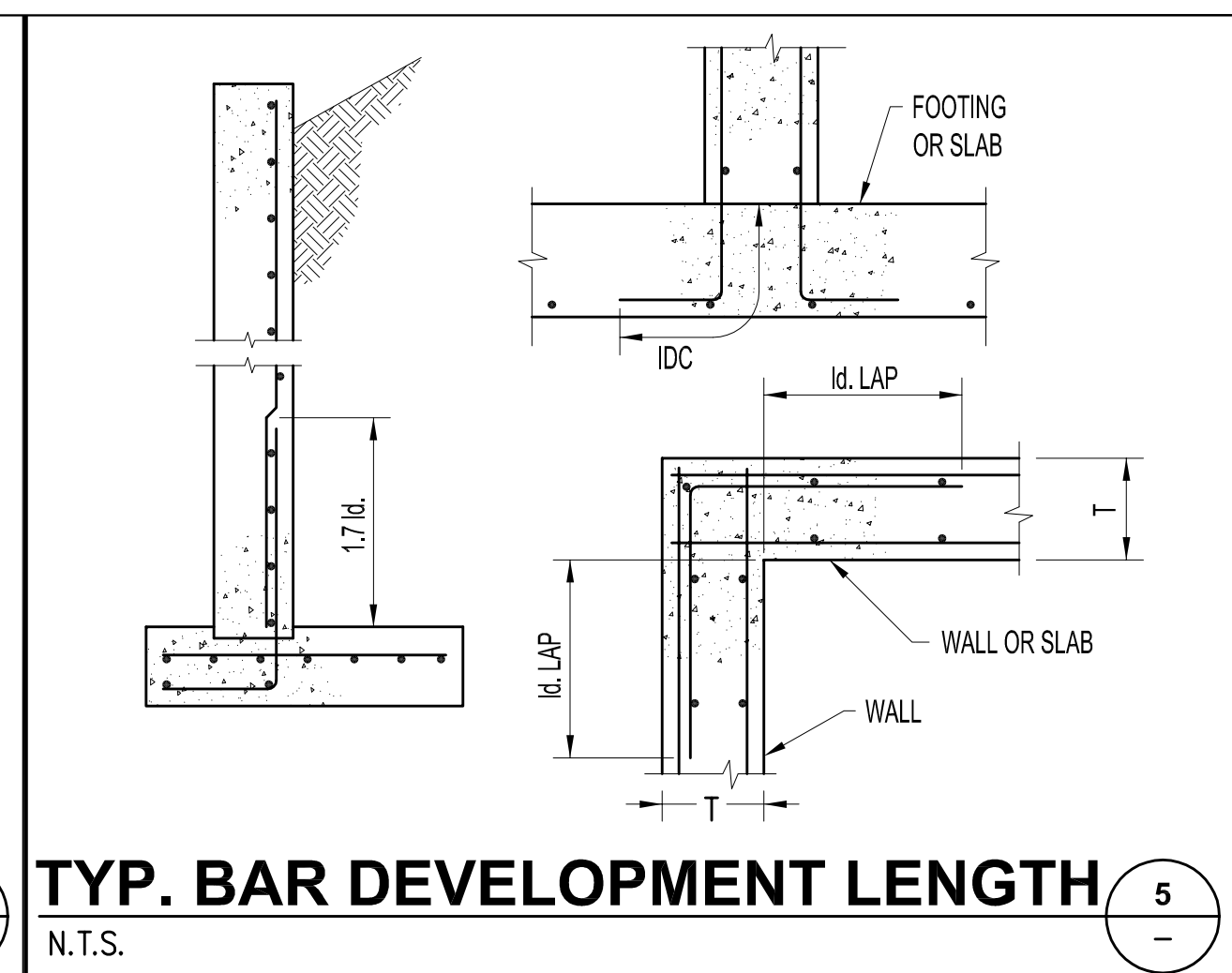
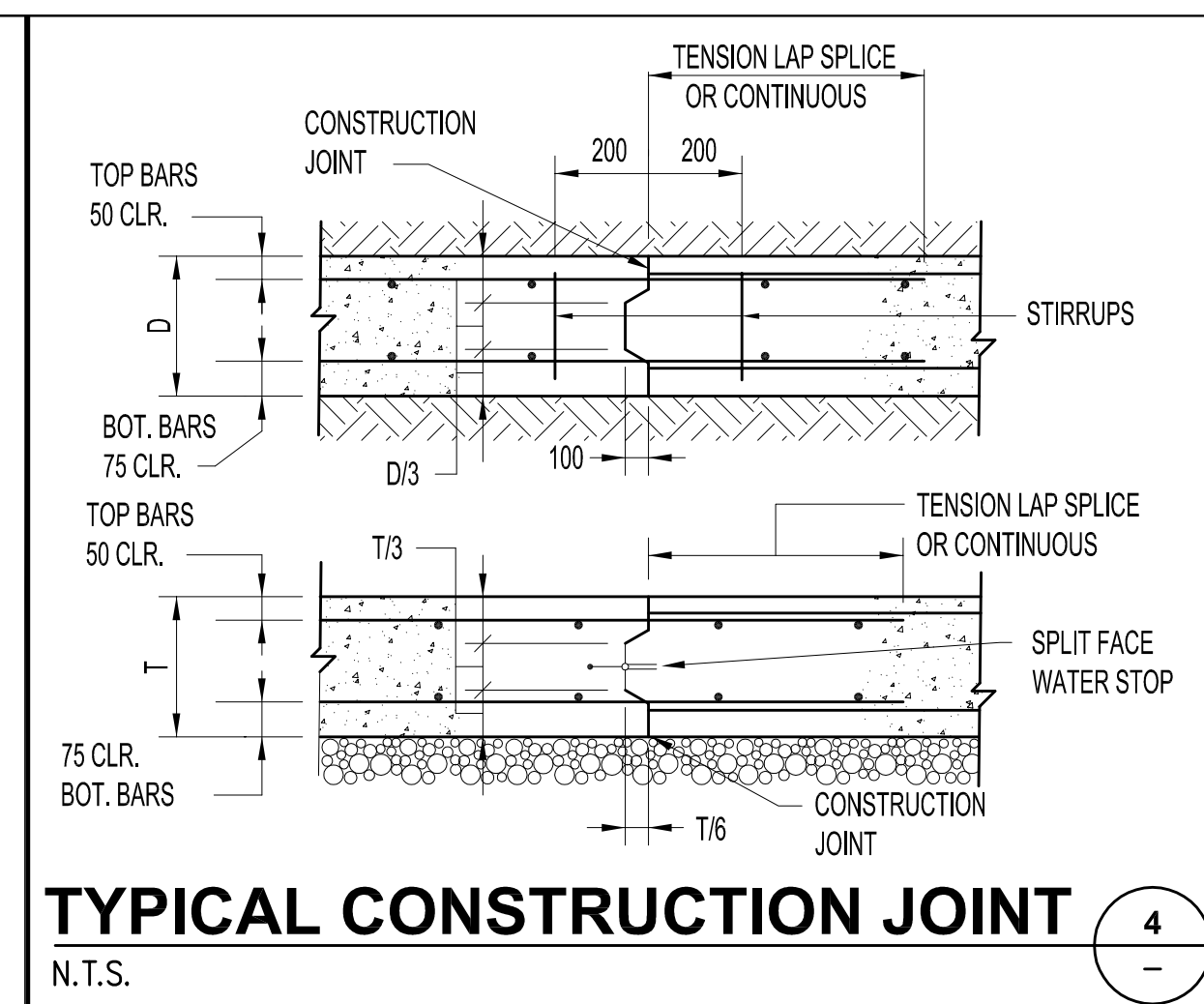
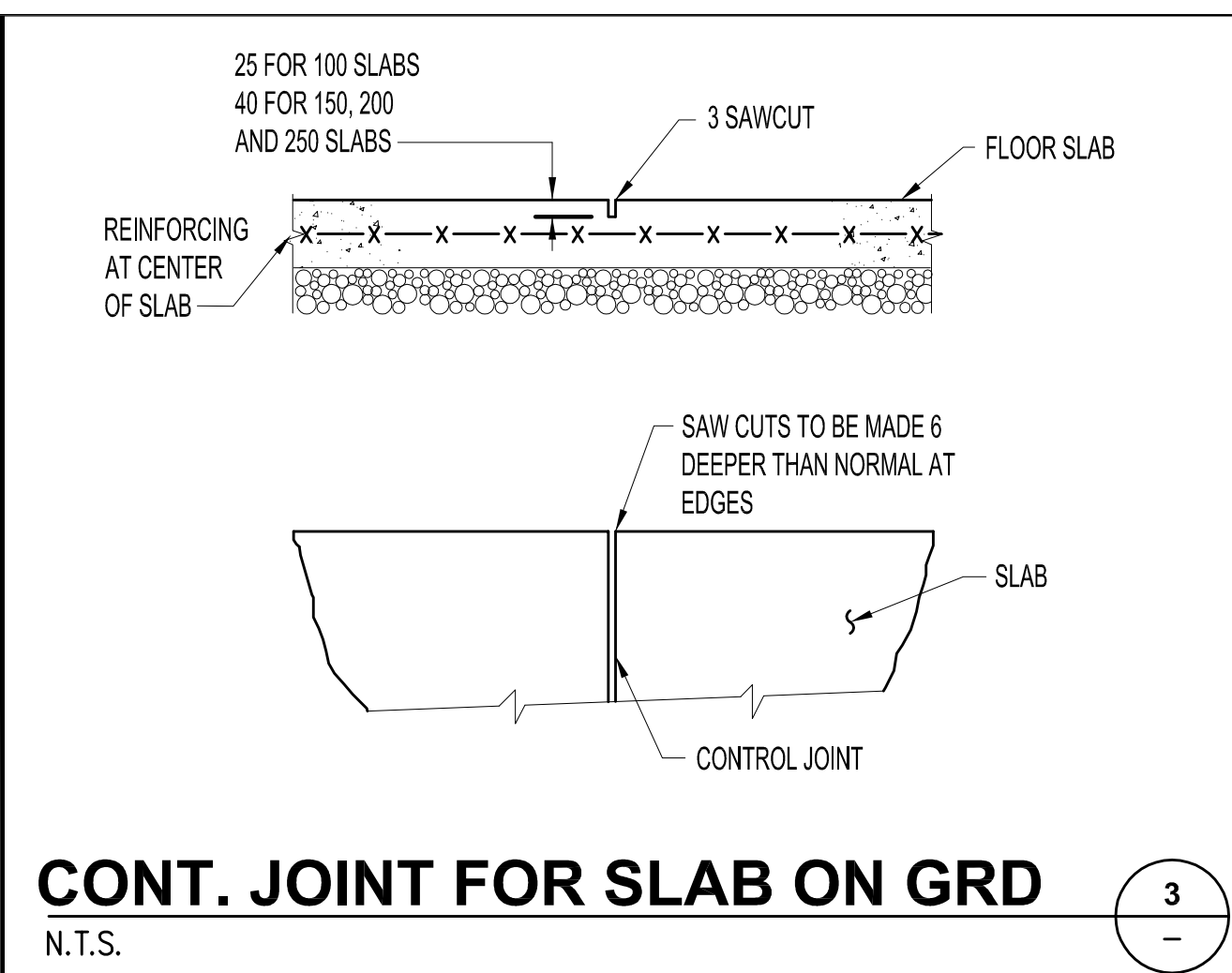
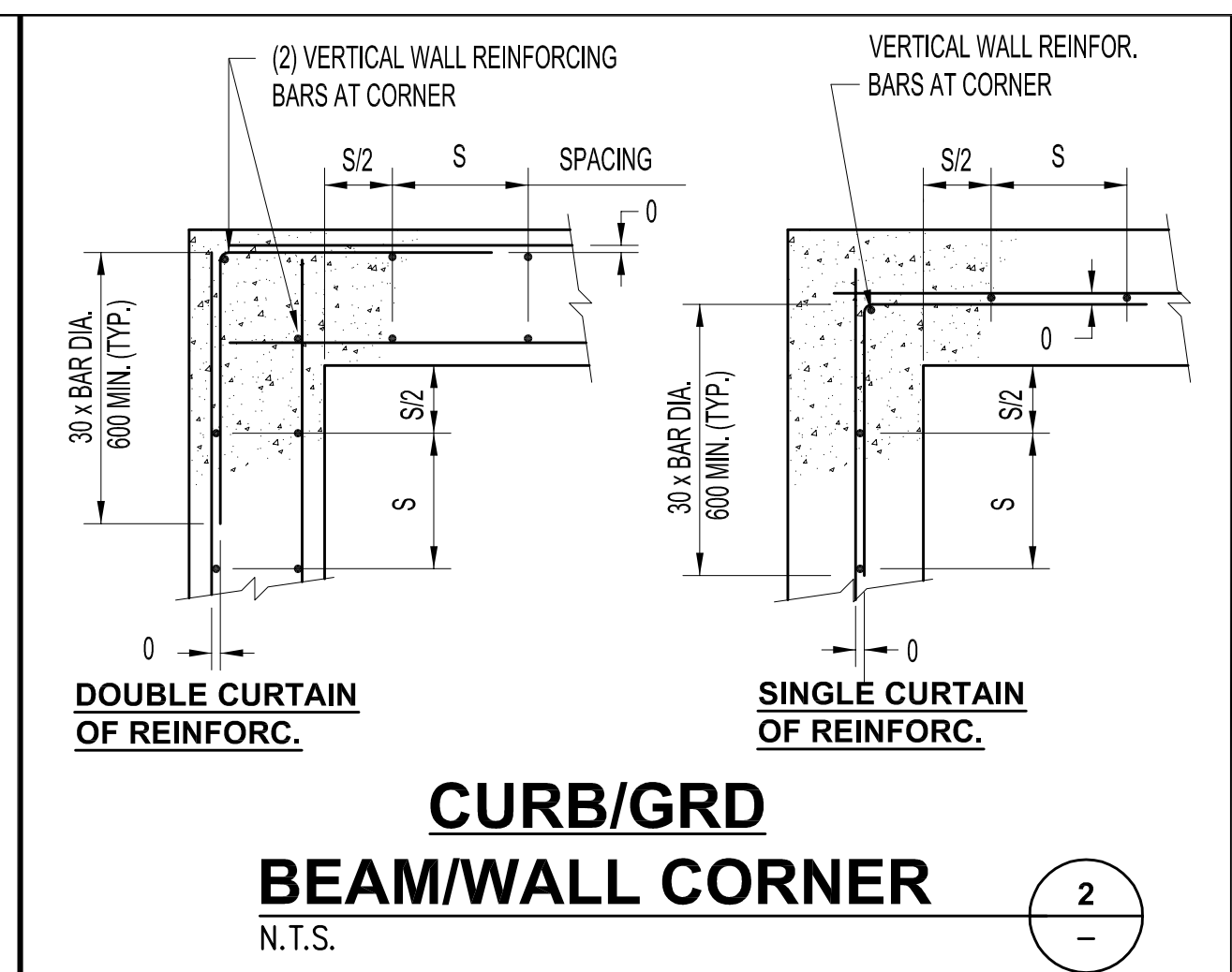
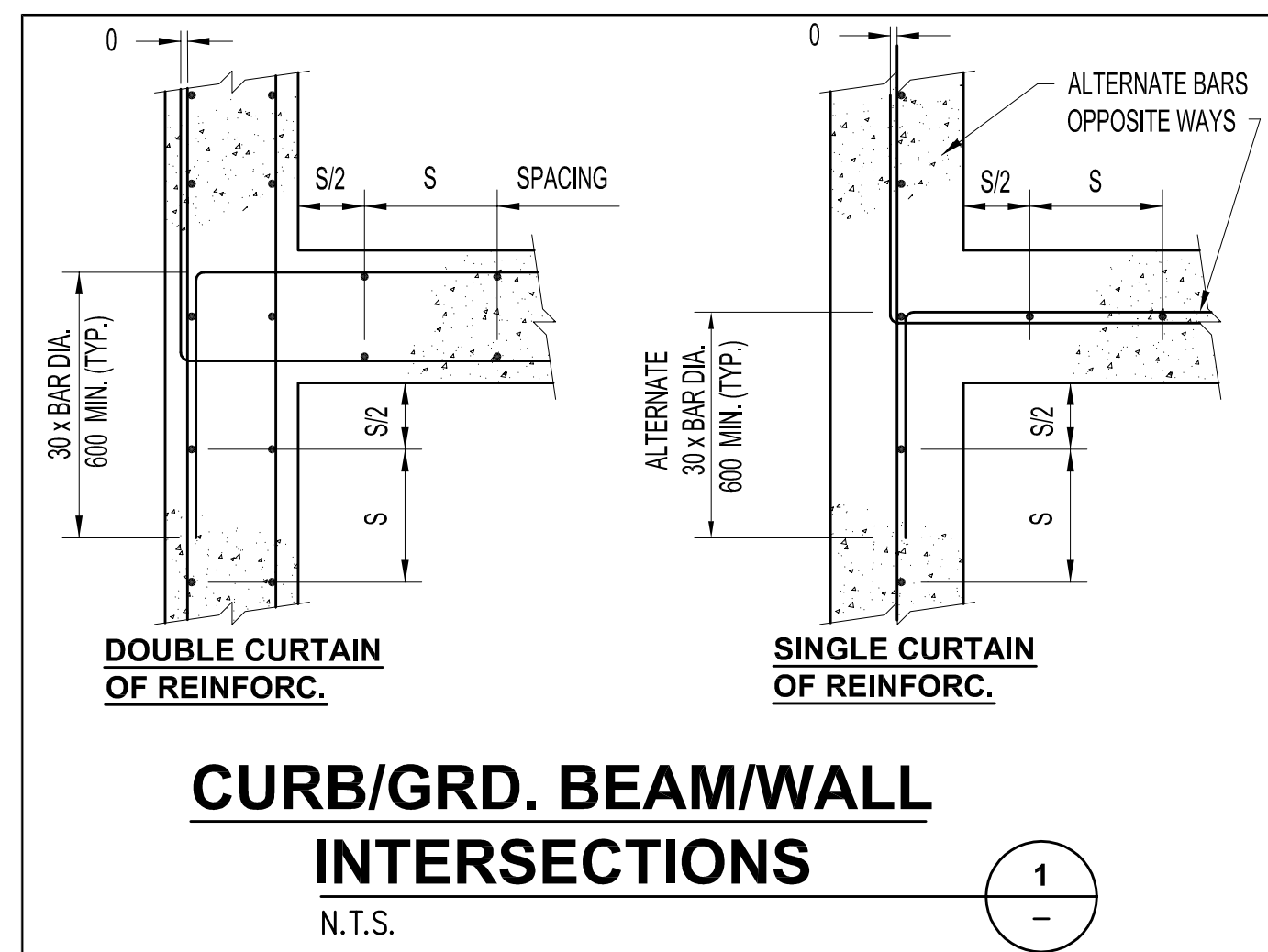
**PROJECTION** UTM Zone 8 **DATUM** NAD 83

**EAGLE GOLD PROJECT YUKON TERRITORY**

Stage 1 Construction - Road Construction

<b>FILE NO.</b> V23201707	<b>DWN</b> SF	<b>CKD</b> TG	<b>REV</b> 0
<b>OFFICE</b> EBA-VANC	<b>DATE</b> May 7, 2013		

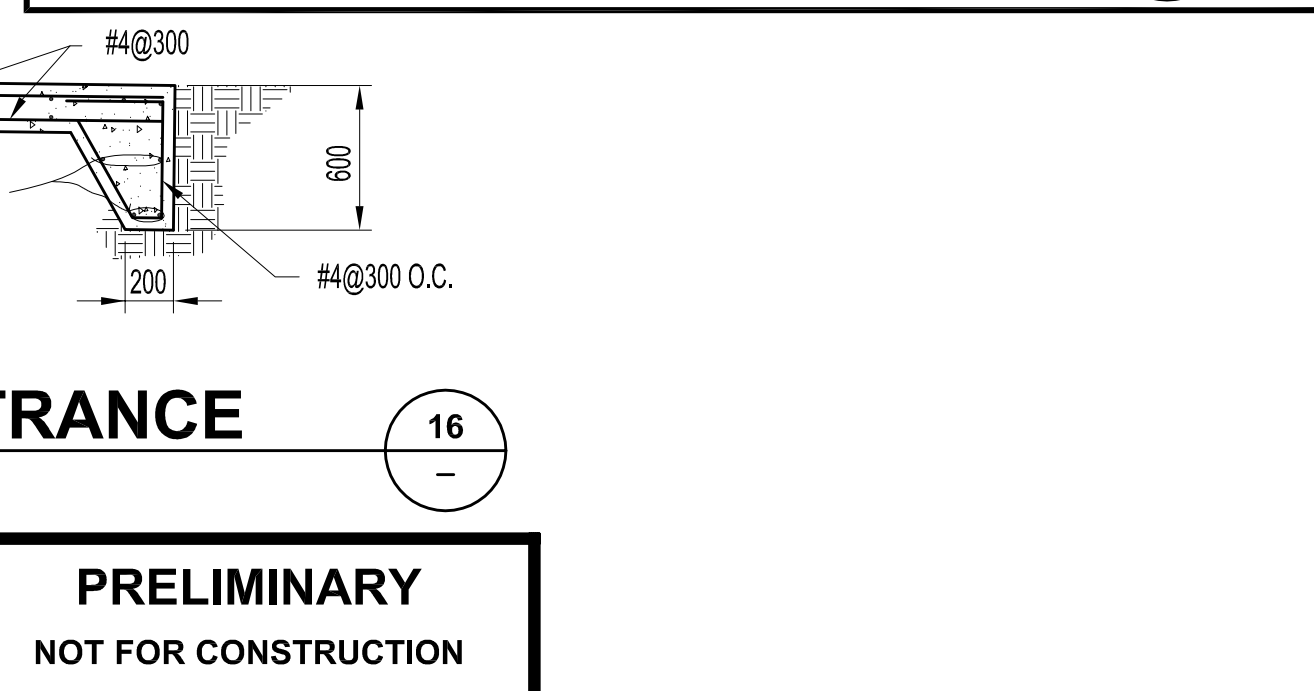
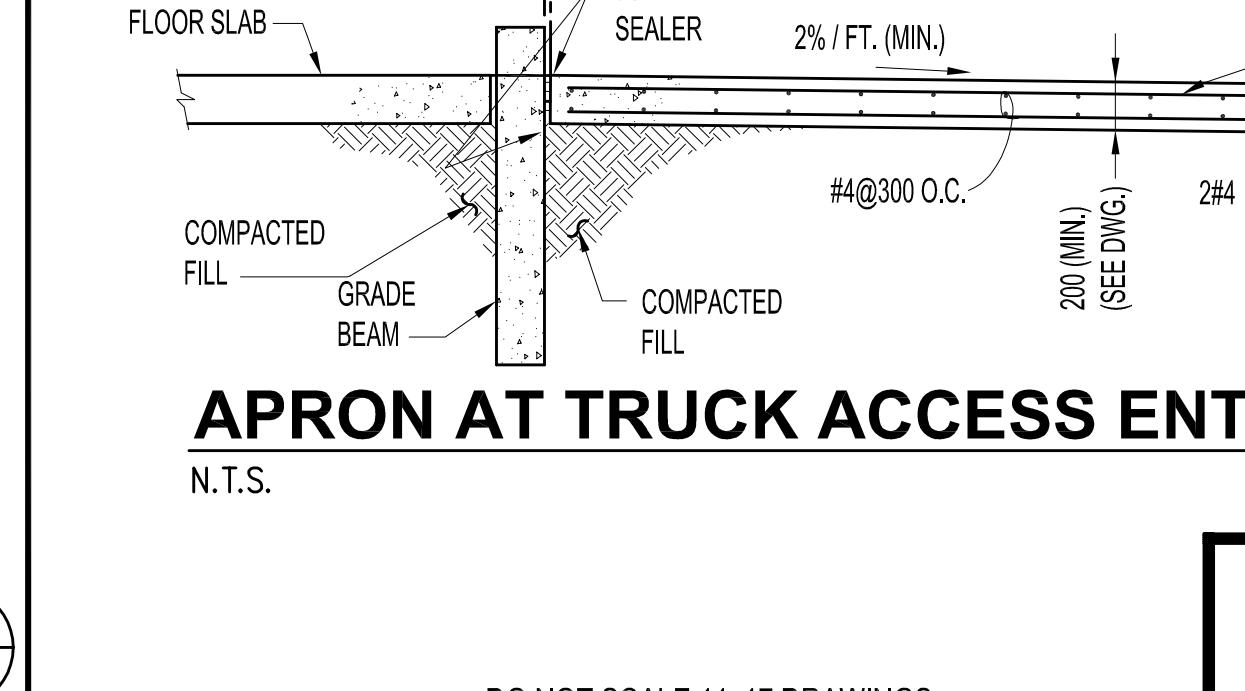
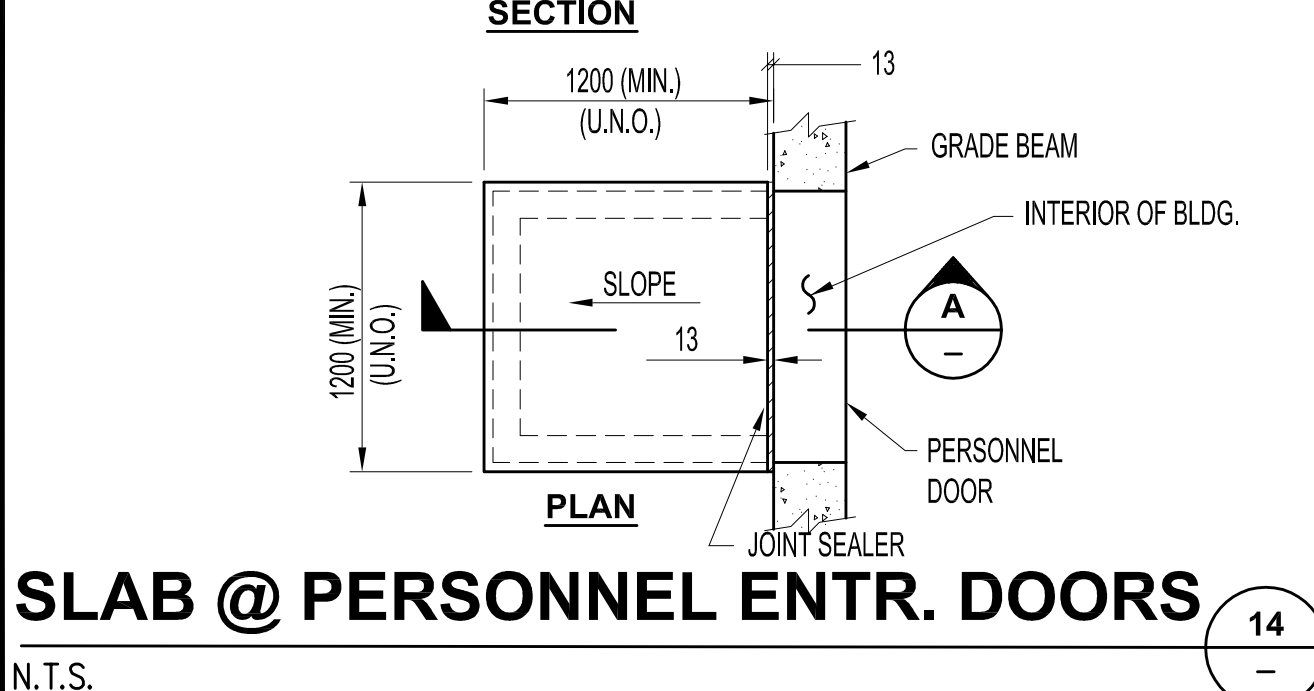
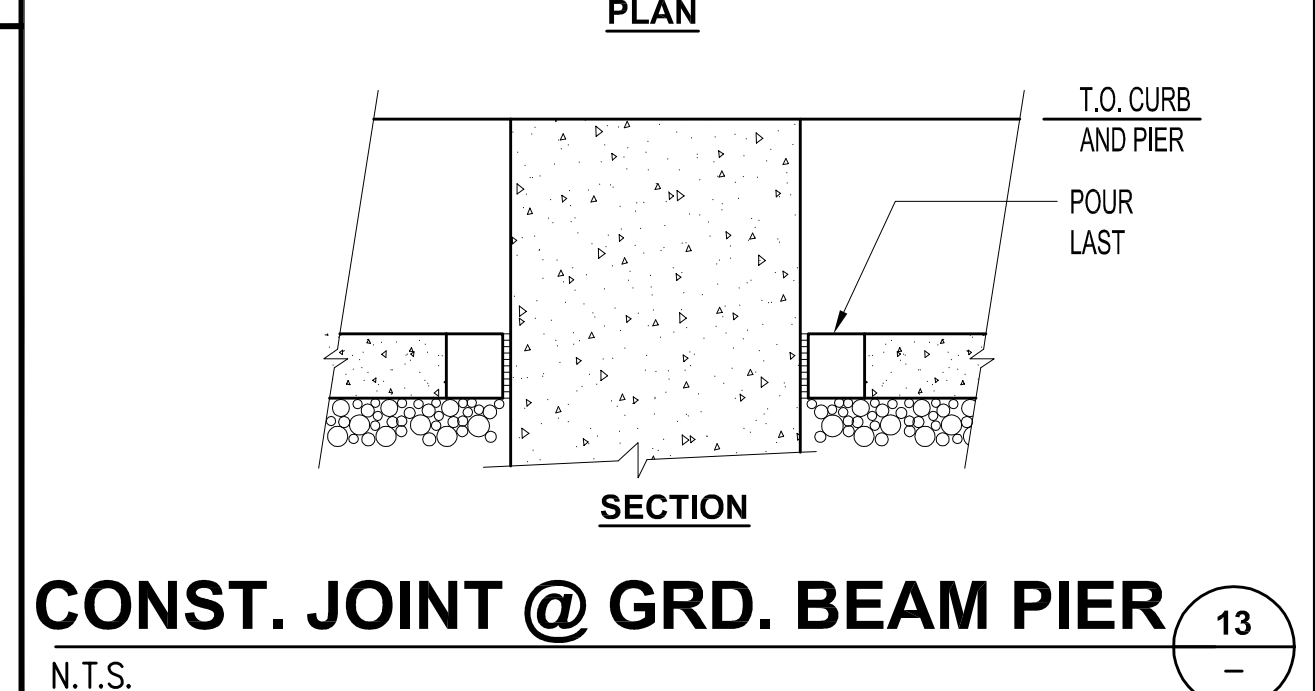
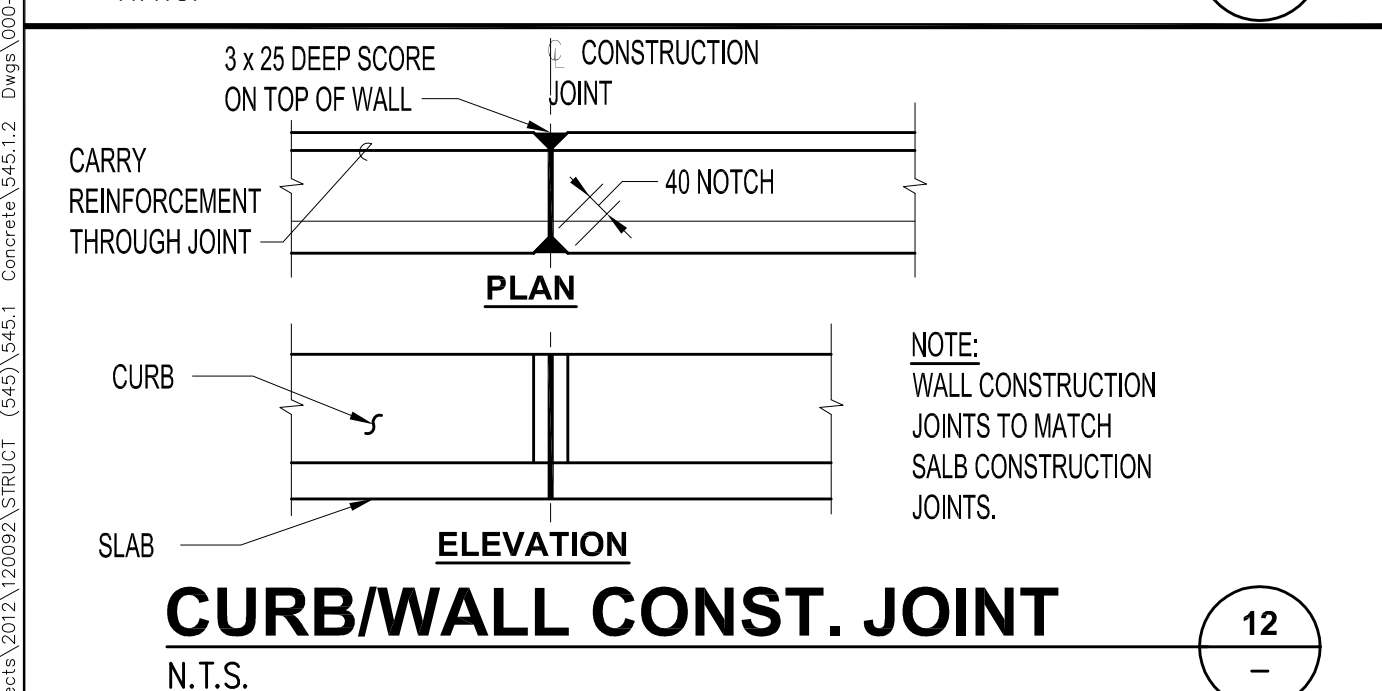
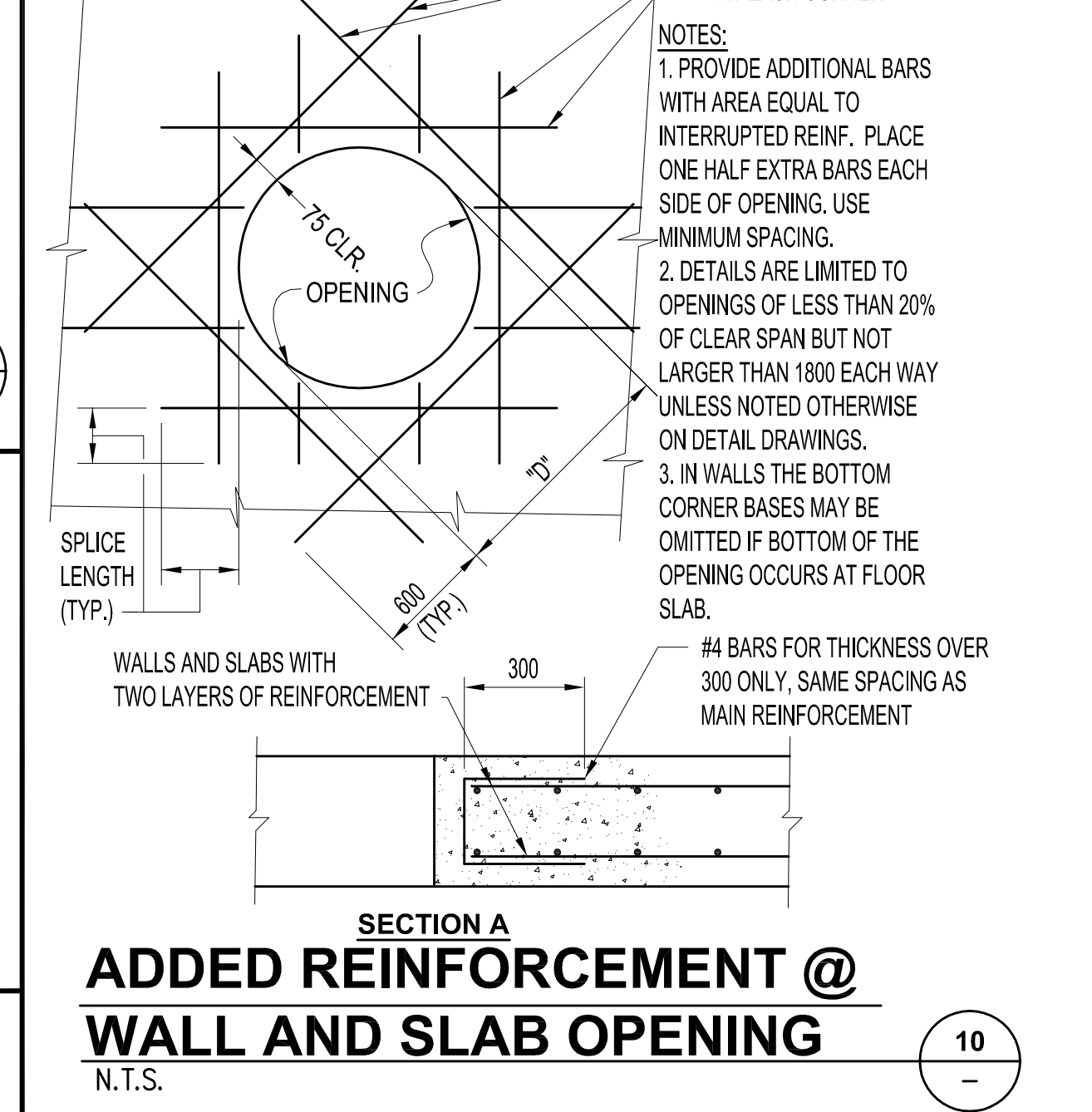
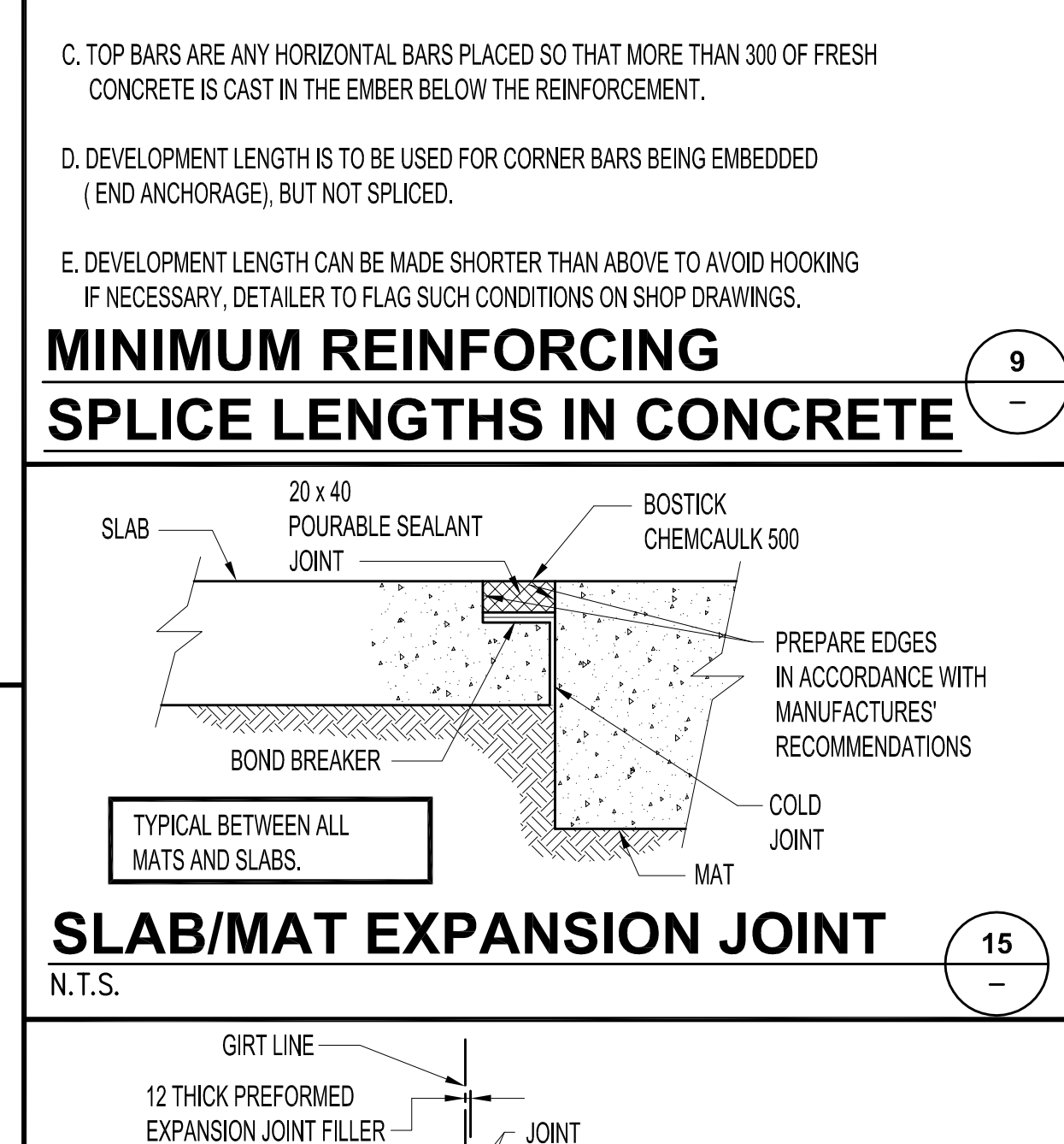
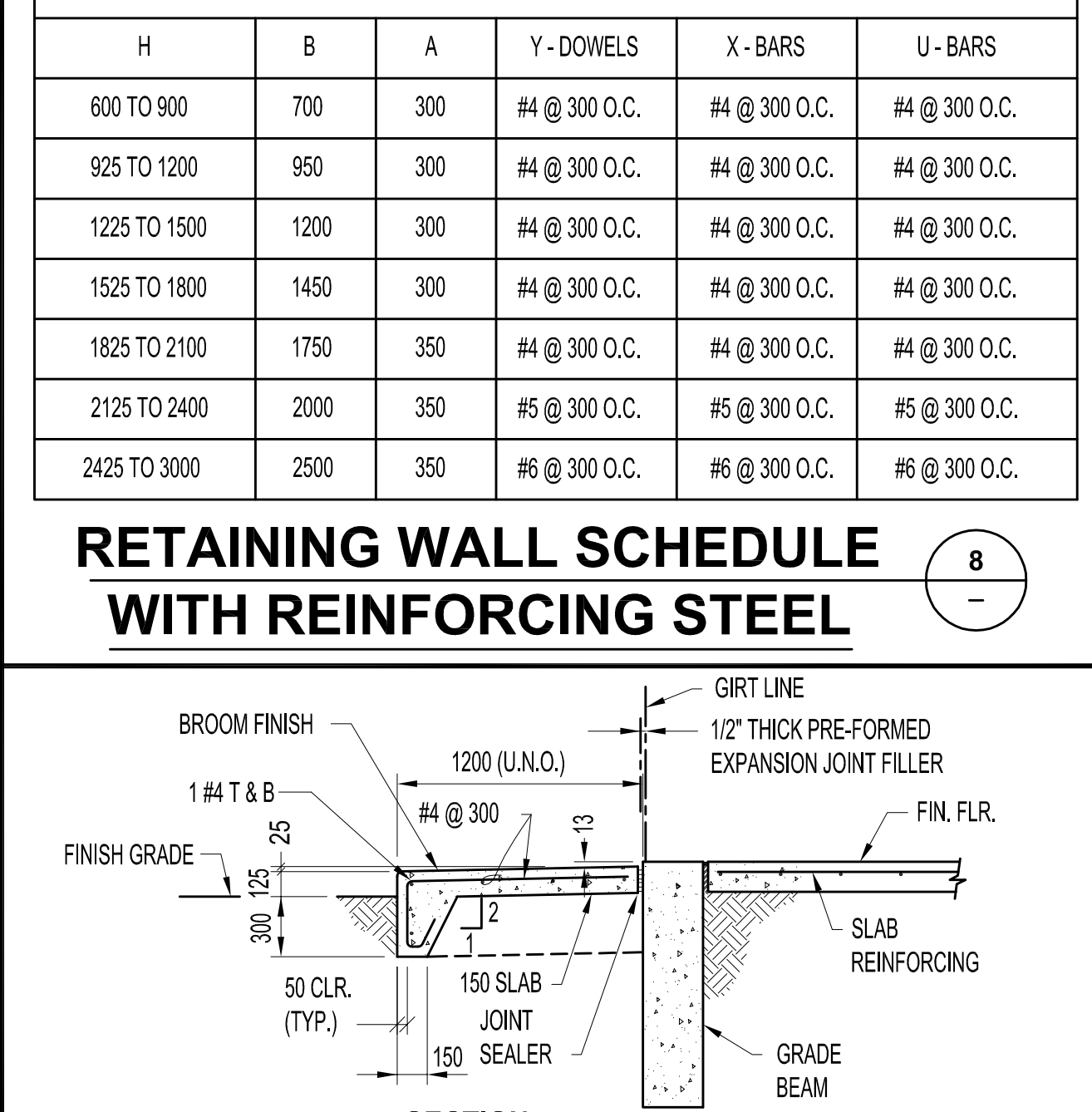
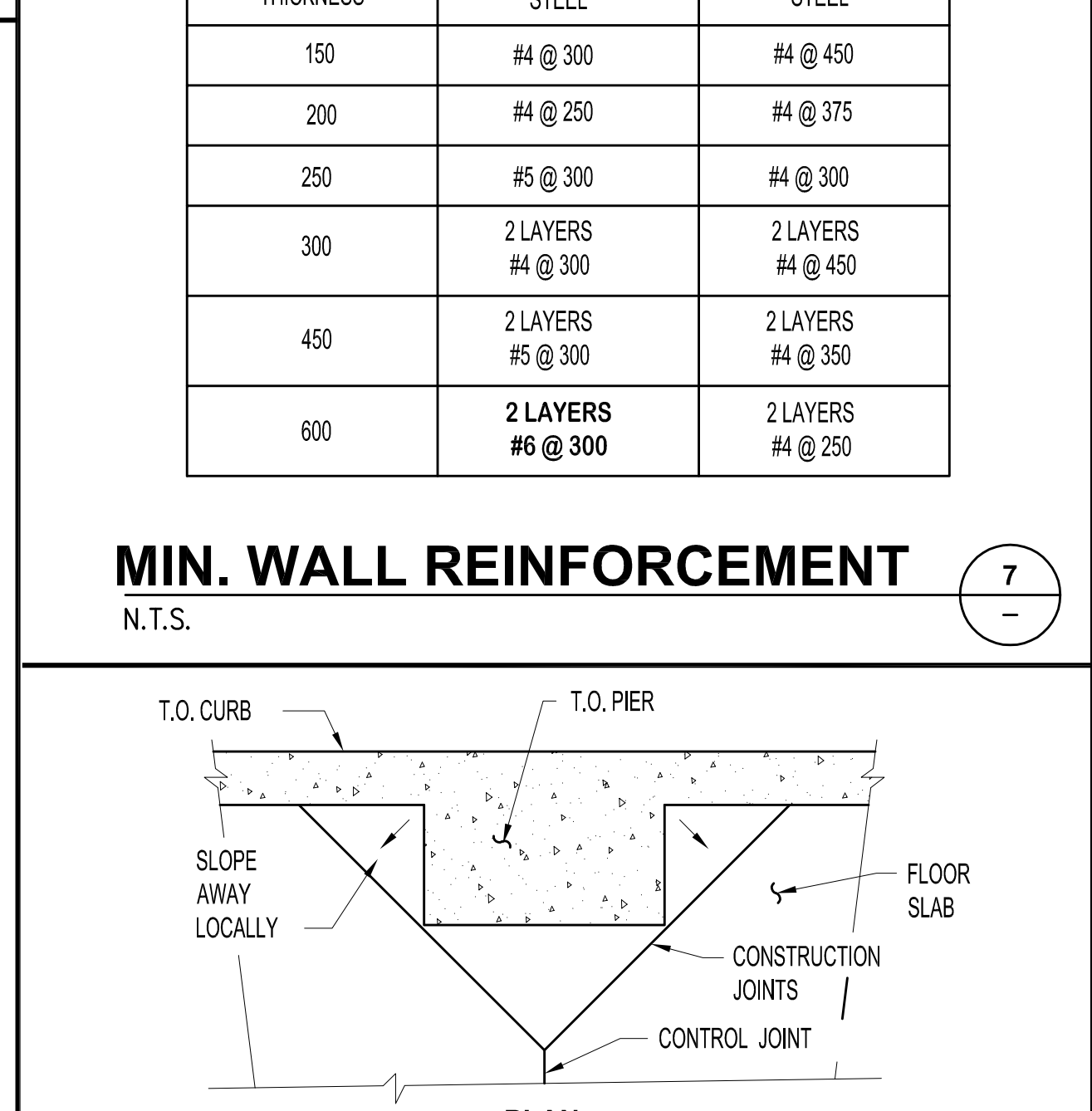
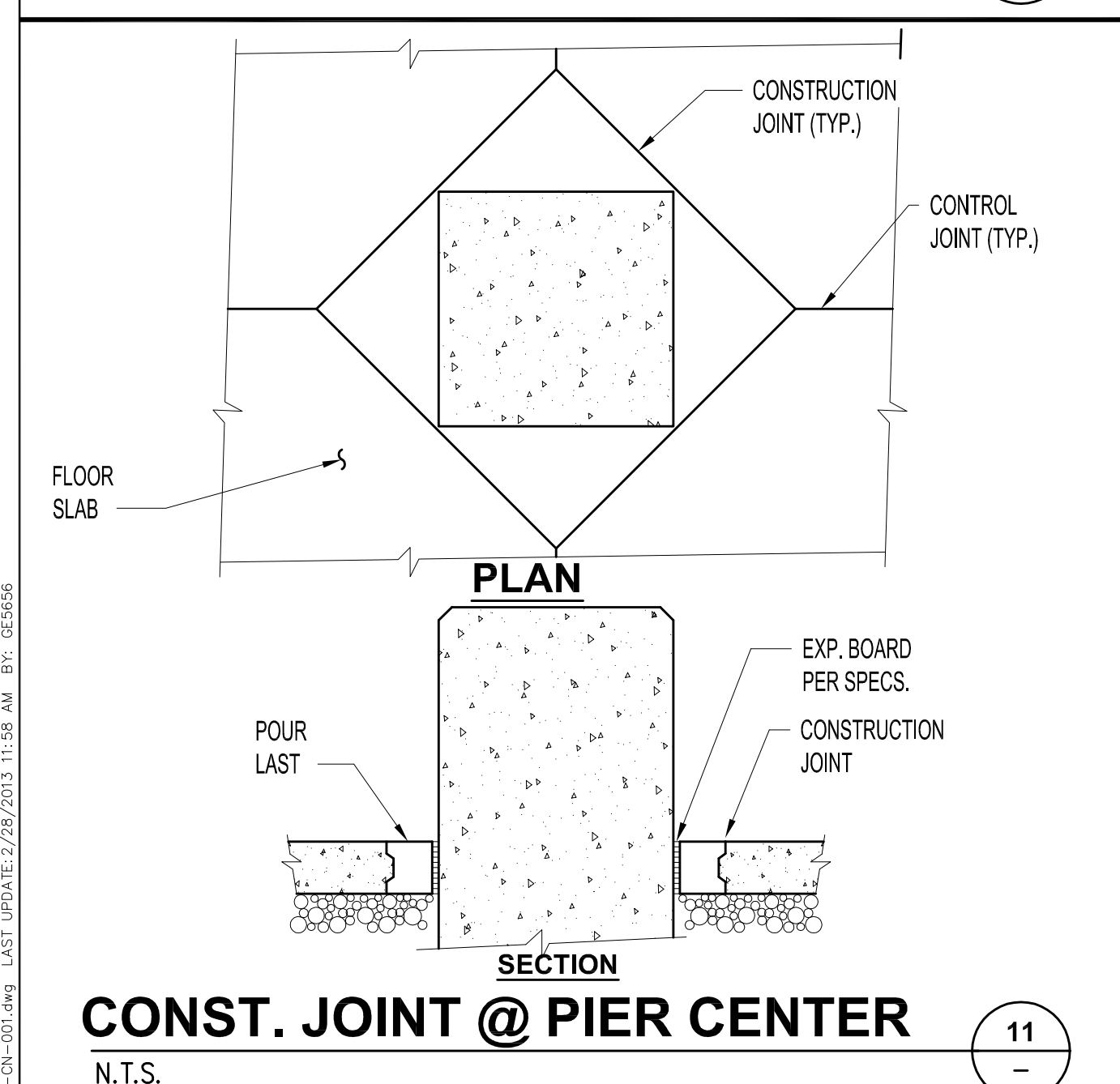
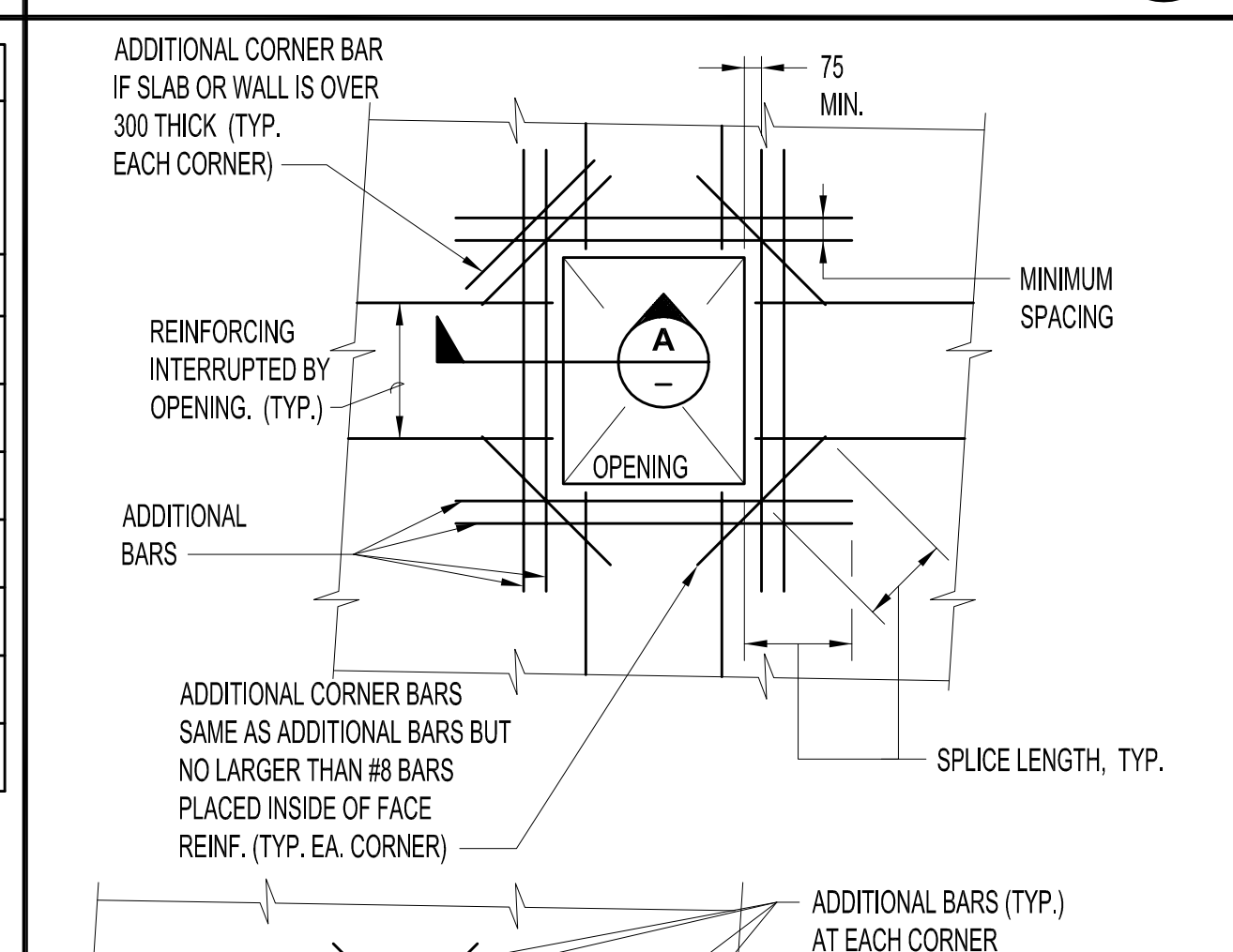
**Figure 6.8-1**



**REINFORCING BAR SPLICE LENGTHS SCHEDULE**

BAR SIZE	TENSION SPLICE LENGTH = 1.7 l.d.		COMPRESSION SPLICE LENGTH	DEVELOPMENT LENGTH = 1.7 l.d.		COMPRESSION DEVELOPMENT LENGTH = l.d.c
	TOP BARS	OTHER BARS		TOP BARS	OTHER BARS	
#4	1250	950	375	725	550	375
#5	1575	1200	475	925	700	475
#6	1850	1425	575	1075	825	575
#7	2700	2050	650	1575	1200	650
#8	3075	2350	750	1800	1375	750
#9	3450	2650	850	2025	1550	850
#10	3875	2975	950	2275	1750	950
#11	4325	3300	1050	2550	1950	1050

A. FOR REINFORCEMENT SPACED 150 OR MORE, REDUCE LAP SPLICE LENGTHS TO 80% OF TENSION SPLICE LENGTH, BUT NOT LESS THAN 300.  
 B. ALL LAPS ARE TENSION SPLICES, UNLESS OTHERWISE NOTED ON THE DRAWINGS.  
 C. TOP BARS ARE ANY HORIZONTAL BARS PLACED SO THAT MORE THAN 300 OF FRESH CONCRETE IS CAST IN THE EMBER BELOW THE REINFORCEMENT.  
 D. DEVELOPMENT LENGTH IS TO BE USED FOR CORNER BARS BEING EMBEDDED (END ANCHORAGE), BUT NOT SPLICED.  
 E. DEVELOPMENT LENGTH CAN BE MADE SHORTER THAN ABOVE TO AVOID HOOKING IF NECESSARY, DETAILER TO FLAG SUCH CONDITIONS ON SHOP DRAWINGS.



**REFERENCES**

DWG. NO.	TITLE

**REFERENCES**

DWG. NO.	TITLE

**REVISIONS**

NO.	DESCRIPTION	BY	APPD	DATE	CLIENT

**REVISIONS**

NO.	DESCRIPTION	BY	APPD	DATE	CLIENT

SCALE: NONE  
 DESIGNED BY: MJD  
 DRAWN BY: LE  
 CHECKED BY:  
 PROJECT MGR:  
 CLIENT APPR:

DATE: MAR 13  
 DATE: MAR 13

**PRELIMINARY NOT FOR CONSTRUCTION**

**EAGLE GOLD PROJECT**

**GENERAL STANDARDS CONCRETE SECTIONS & DETAILS SHT. 1**

PROJECT NO. M3-PN120092  
 DWG NO. 000-CN-001  
 REV NO. DATE  
 P1 01 MAR 13

StrataGold Corporation  
 A wholly owned subsidiary of Victoria Gold Corp.  
 ARCHITECTURE  
 ENGINEERING  
 CONSTRUCTION MANAGEMENT  
 www.m3eng.com

File: \\p02\c:\p02\c\p02\120092\STRUC1 - (645) Sht.1 - Concrete\5451.1 - Dwg\005-CN-001.dwg LAST UPDATED: 2/28/2013 11:58 AM BY: G5656

