

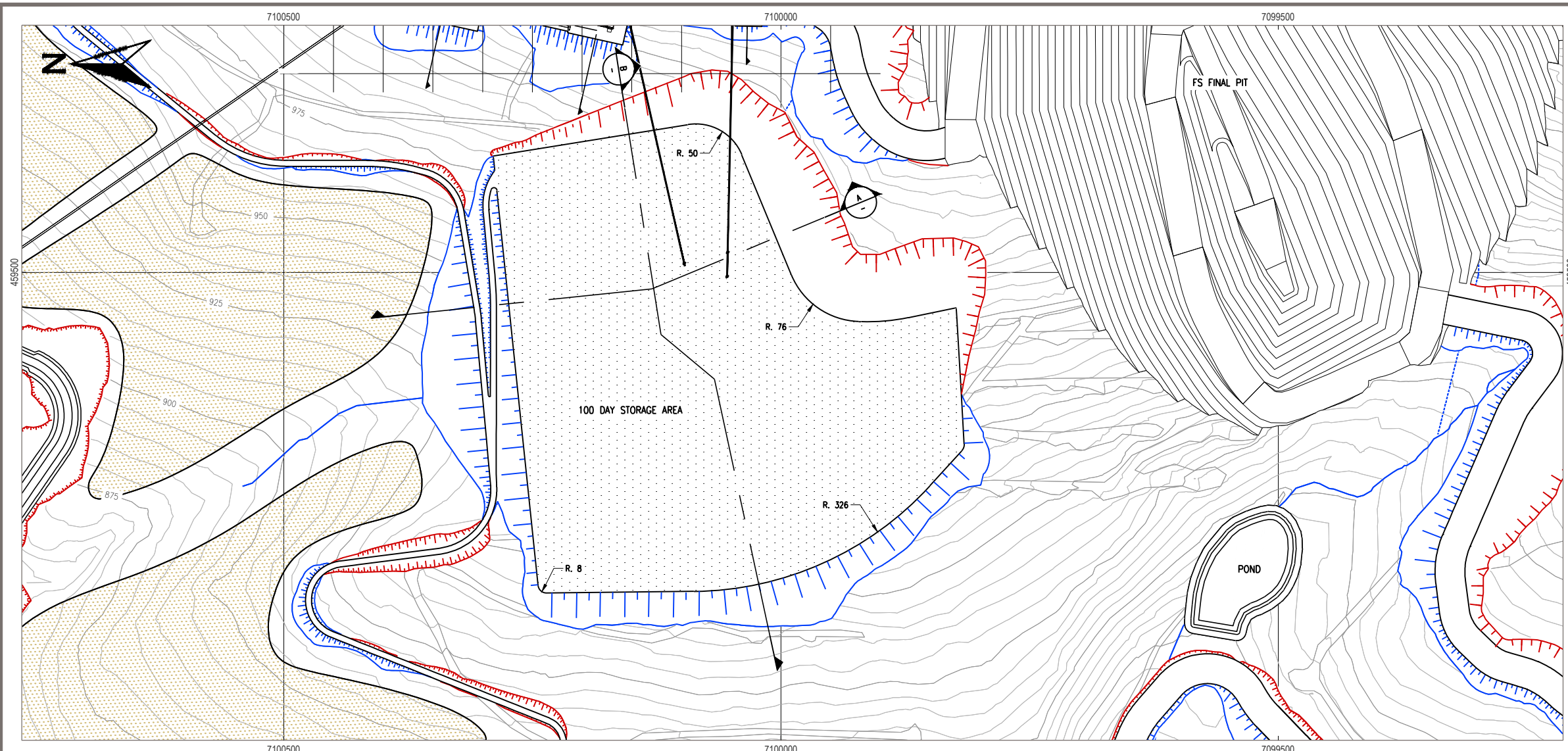
- NOTES**
- All elevations are in meters.
 - Contour data received from Underhill (February 2011) UTM NAD 83.
 - 25 m Contour intervals Shown.

STATUS
ISSUED FOR REVIEW

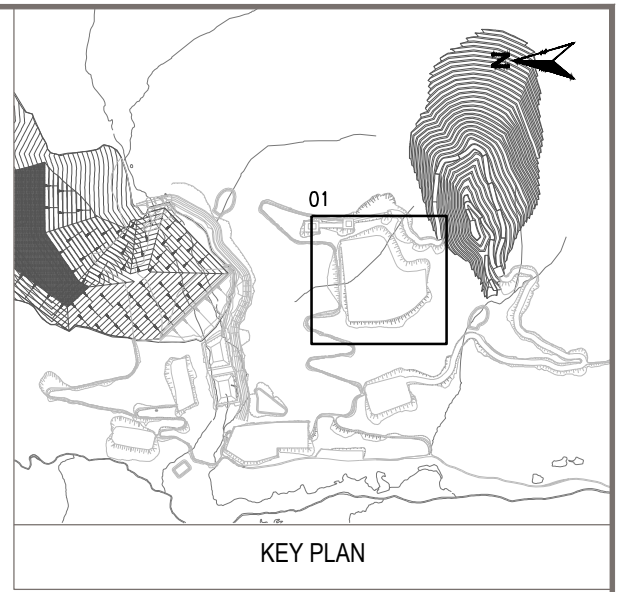
CLIENT

PROJECTION UTM Zone 8 **DATUM** NAD 83

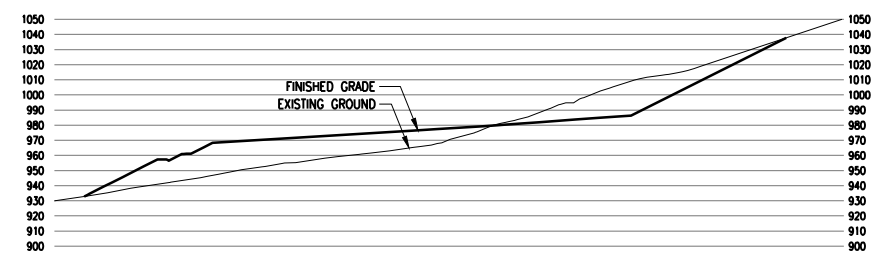
EAGLE GOLD PROJECT YUKON TERRITORY			
Overall Site General Arrangement Plan			
FILE NO. V23201707	DWN SF	CKD TG	REV 0
OFFICE EBA-VANC	DATE May 1, 2013		10130-20-002



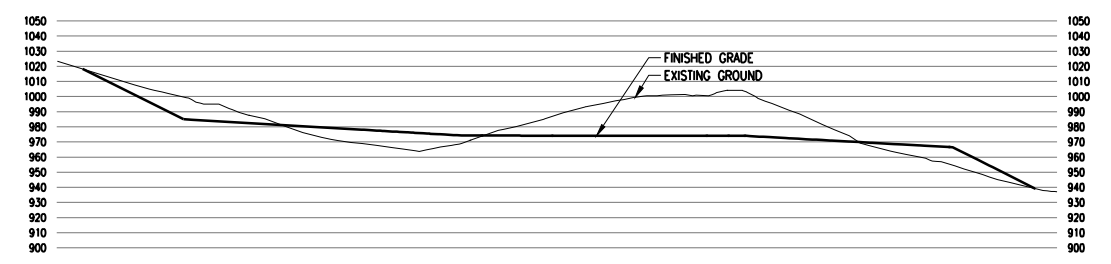
PLAN
1:5000



KEY PLAN



SECTION A
1:5000



SECTION B
1:5000

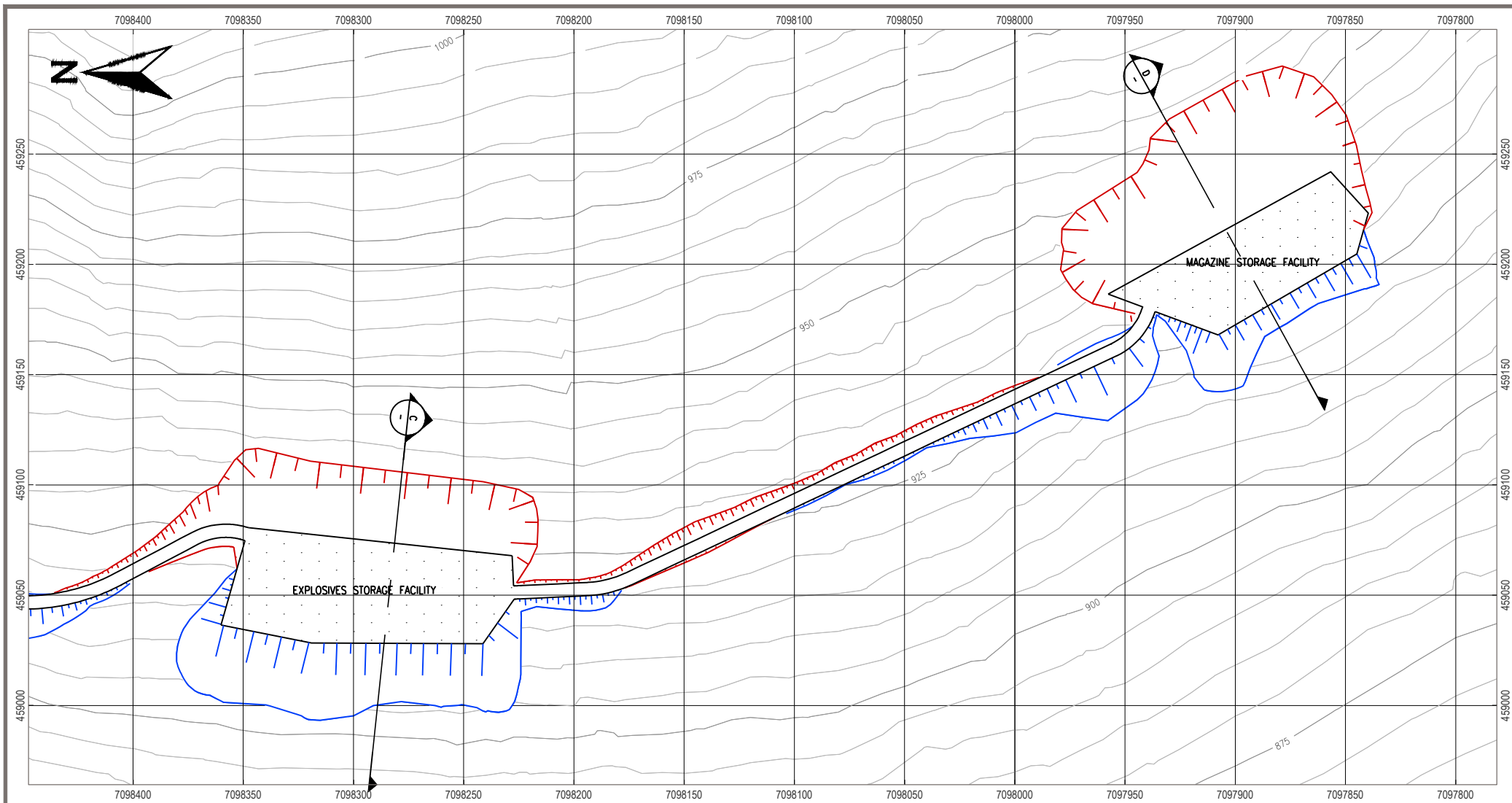
- NOTES
- All elevations are in meters.
 - Contour data received from Underhill (February 2011) UTM NAD 83.
 - 5 m Contour intervals Shown.
 - Culvert locations and sizes shall be designed by others.
 - Cut slopes are 1.5H:1V. Fill slopes are 2H:1V.
 - Potential rock fall and avalanche protection to be determined in the field by geotechnical engineer.

STATUS
ISSUED FOR REVIEW

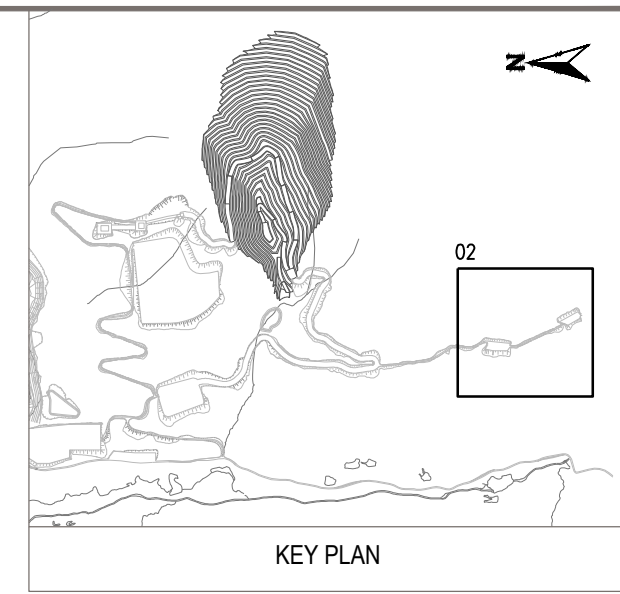
CLIENT

PROJECTION UTM Zone 8 DATUM NAD 83

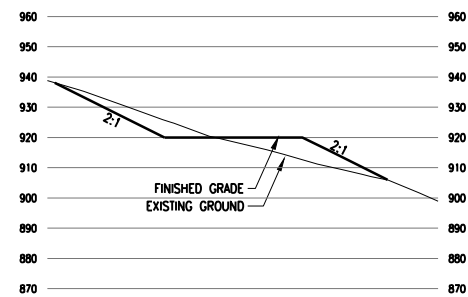
EAGLE GOLD PROJECT YUKON TERRITORY				
Civil 100 Day Storage Plan and Typical Sections				
FILE NO. V23201707	DWN SF	CKD TG	REV 0	10130-20-301
OFFICE EBA-VANC	DATE May 1, 2013			



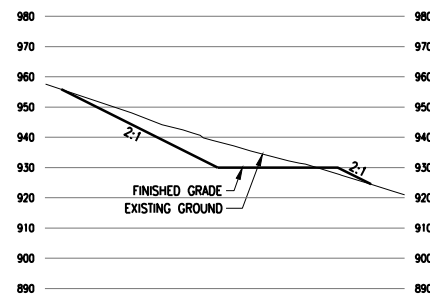
PLAN
1:2500



KEY PLAN



SECTION C
1:2500



SECTION D
1:2500

- NOTES
- All elevations are in meters.
 - Contour data received from Underhill (February 2011) UTM NAD 83.
 - 5 m Contour intervals Shown.
 - Culvert locations and sizes shall be designed by others.
 - Cut slopes are 1.5H:1V. Fill slopes are 2H:1V.
 - Potential rock fall and avalanche protection to be determined in the field by geotechnical engineer.

STATUS
ISSUED FOR REVIEW

CLIENT



EAGLE GOLD PROJECT
YUKON TERRITORY

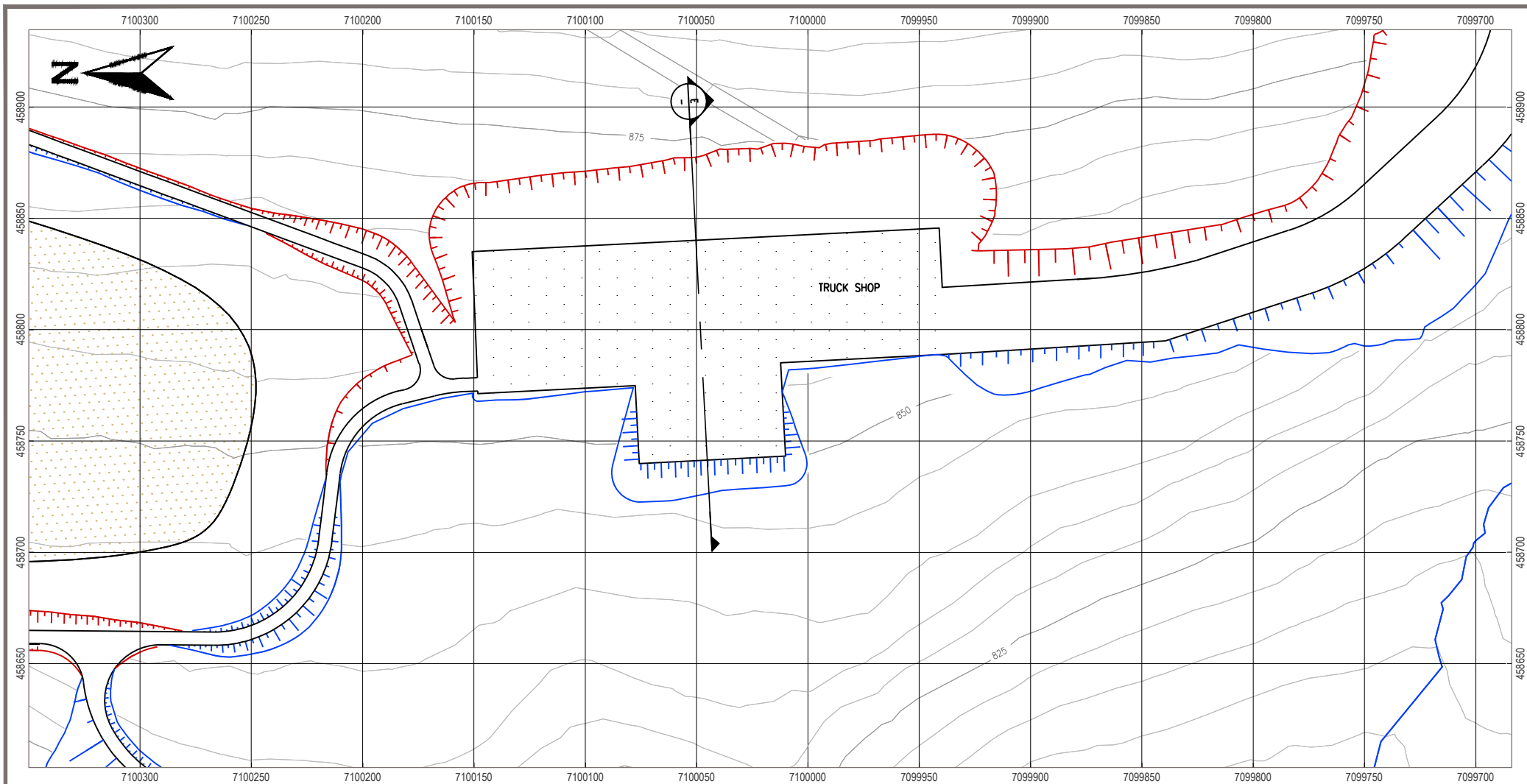
Civil Explosives Facilities Plan and Typical Sections

PROJECTION UTM Zone 8 DATUM NAD 83

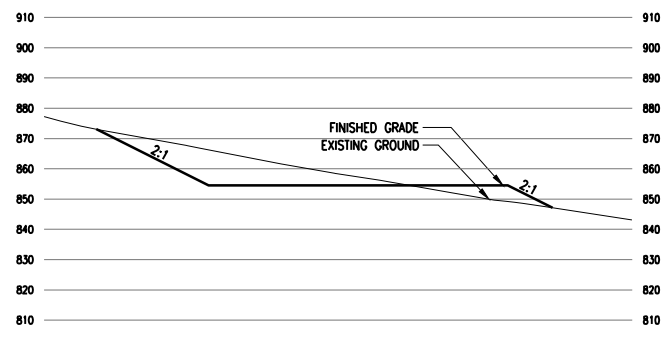


FILE NO. V23201707	DWN SF	CKD TG	REV 0
OFFICE EBA-VANC	DATE May 1, 2013		

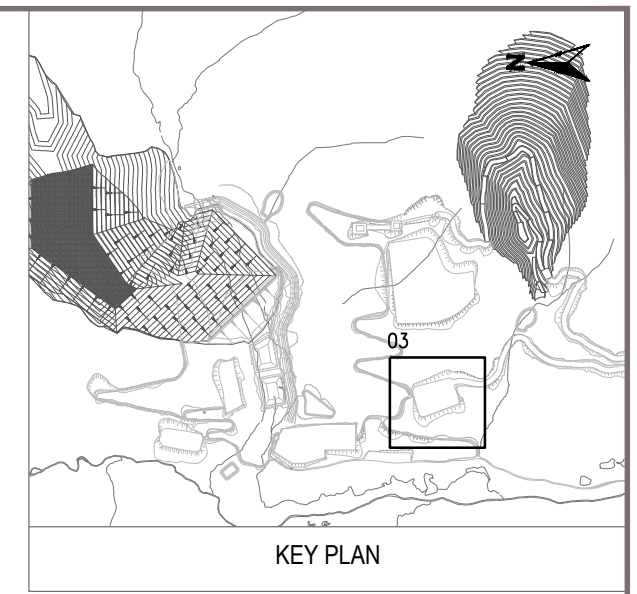
10130-20-302



PLAN
1:2500



SECTION E
1:2500



KEY PLAN

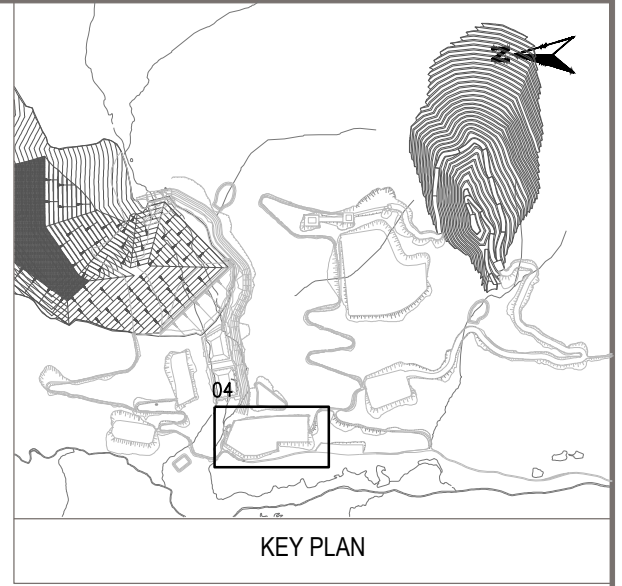
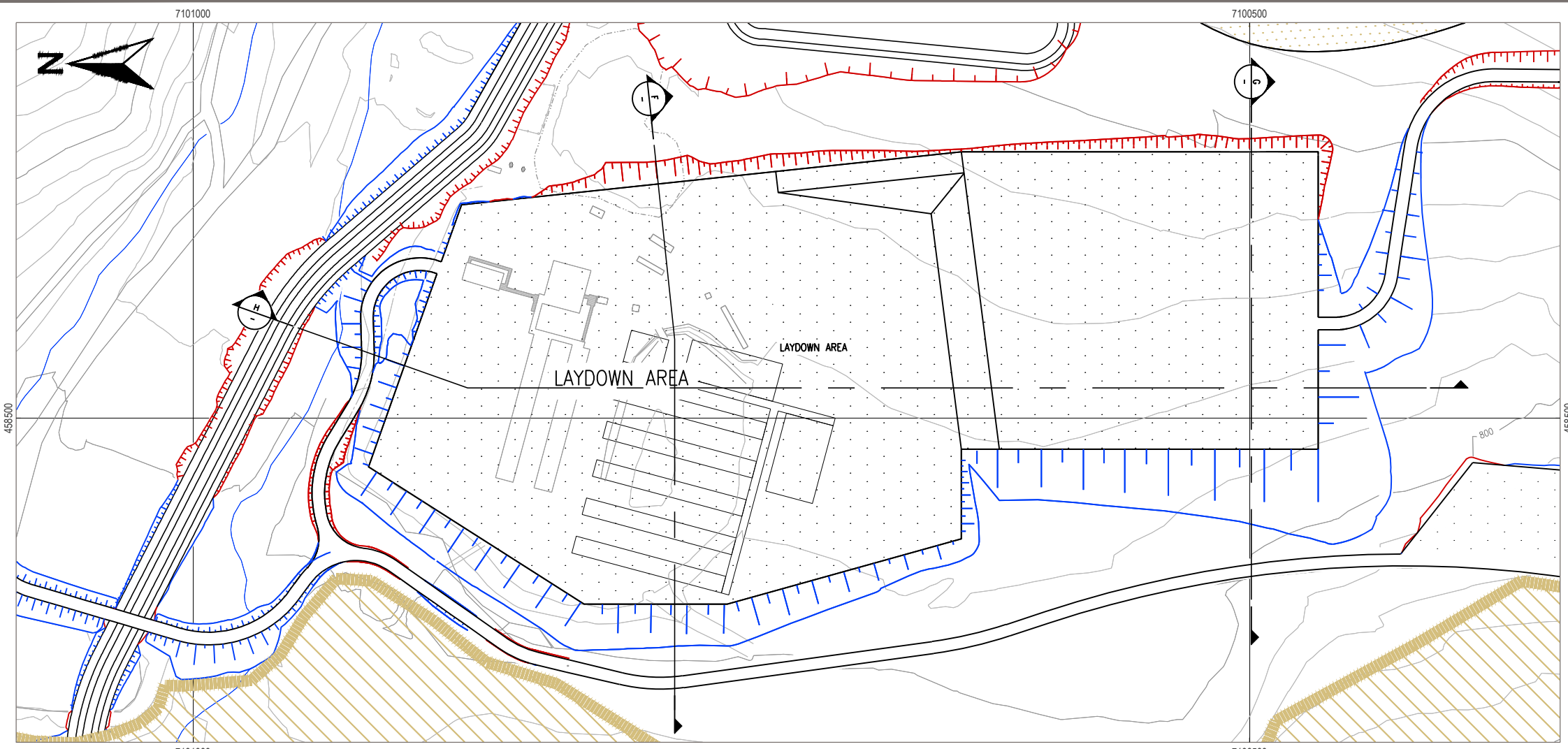
- NOTES
- All elevations are in meters.
 - Contour data received from Underhill (February 2011) UTM NAD 83.
 - 5 m Contour intervals Shown.
 - Culvert locations and sizes shall be designed by others.
 - Cut slopes are 1.5H:1V. Fill slopes are 2H:1V.
 - Potential rock fall and avalanche protection to be determined in the field by geotechnical engineer.

STATUS
ISSUED FOR REVIEW

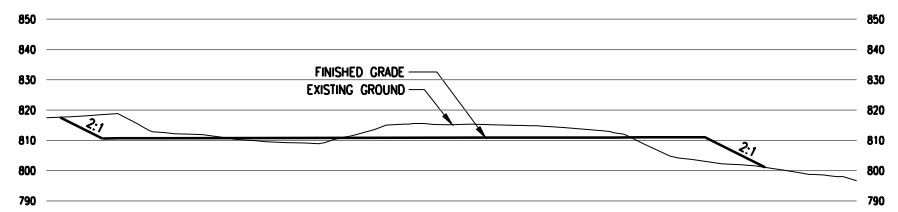
CLIENT

PROJECTION UTM Zone 8 DATUM NAD 83

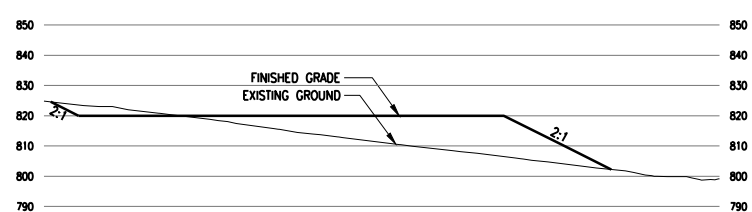
EAGLE GOLD PROJECT YUKON TERRITORY				
Civil Truck Shop Plan and Typical Sections				
FILE NO. V23201707	DWN SF	CKD TG	REV 0	10130-20-303
OFFICE EBA-VANC	DATE May 1, 2013			



PLAN
1:2500



SECTION F
1:2500



SECTION G
1:2500



SECTION H
1:2500

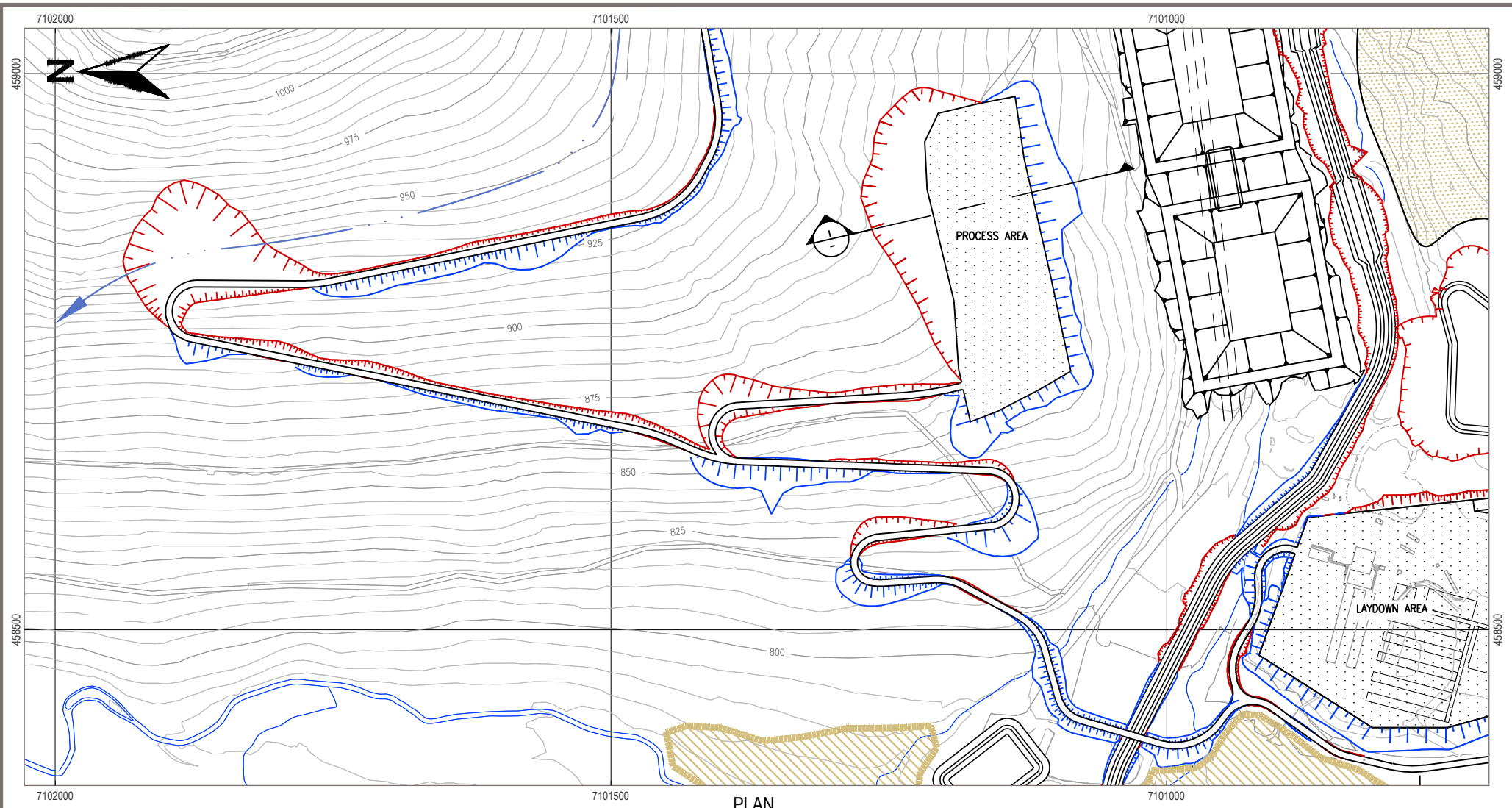
- NOTES
- All elevations are in meters.
 - Contour data received from Underhill (February 2011) UTM NAD 83.
 - 5 m Contour intervals Shown.
 - Culvert locations and sizes shall be designed by others.
 - Cut slopes are 1.5H:1V. Fill slopes are 2H:1V.
 - Potential rock fall and avalanche protection to be determined in the field by geotechnical engineer.

STATUS
ISSUED FOR REVIEW

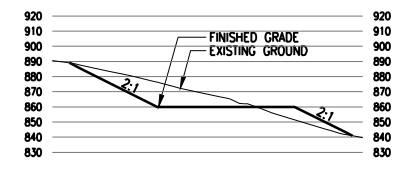
CLIENT

PROJECTION UTM Zone 8 DATUM NAD 83

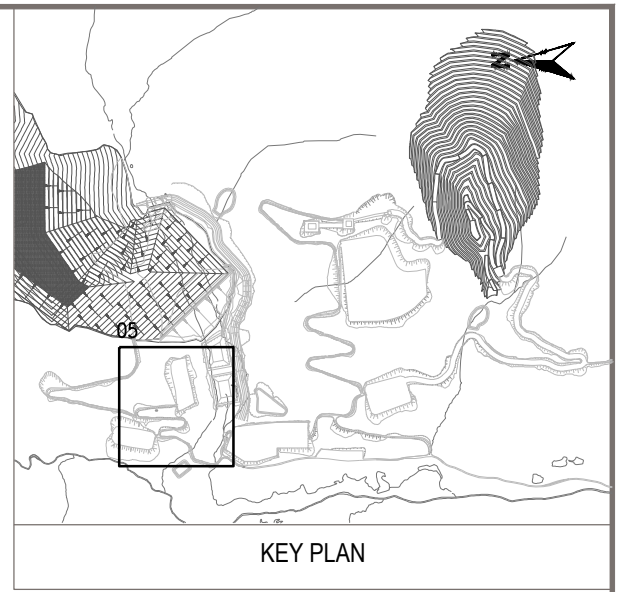
EAGLE GOLD PROJECT YUKON TERRITORY			
Civil Camp and Laydown Plan and Typical Sections			
FILE NO. V23201707	DWN SF	CKD TG	REV 0
OFFICE EBA-VANC	DATE May 1, 2013	10130-20-304	



PLAN
1:5000



SECTION I
1:5000



KEY PLAN

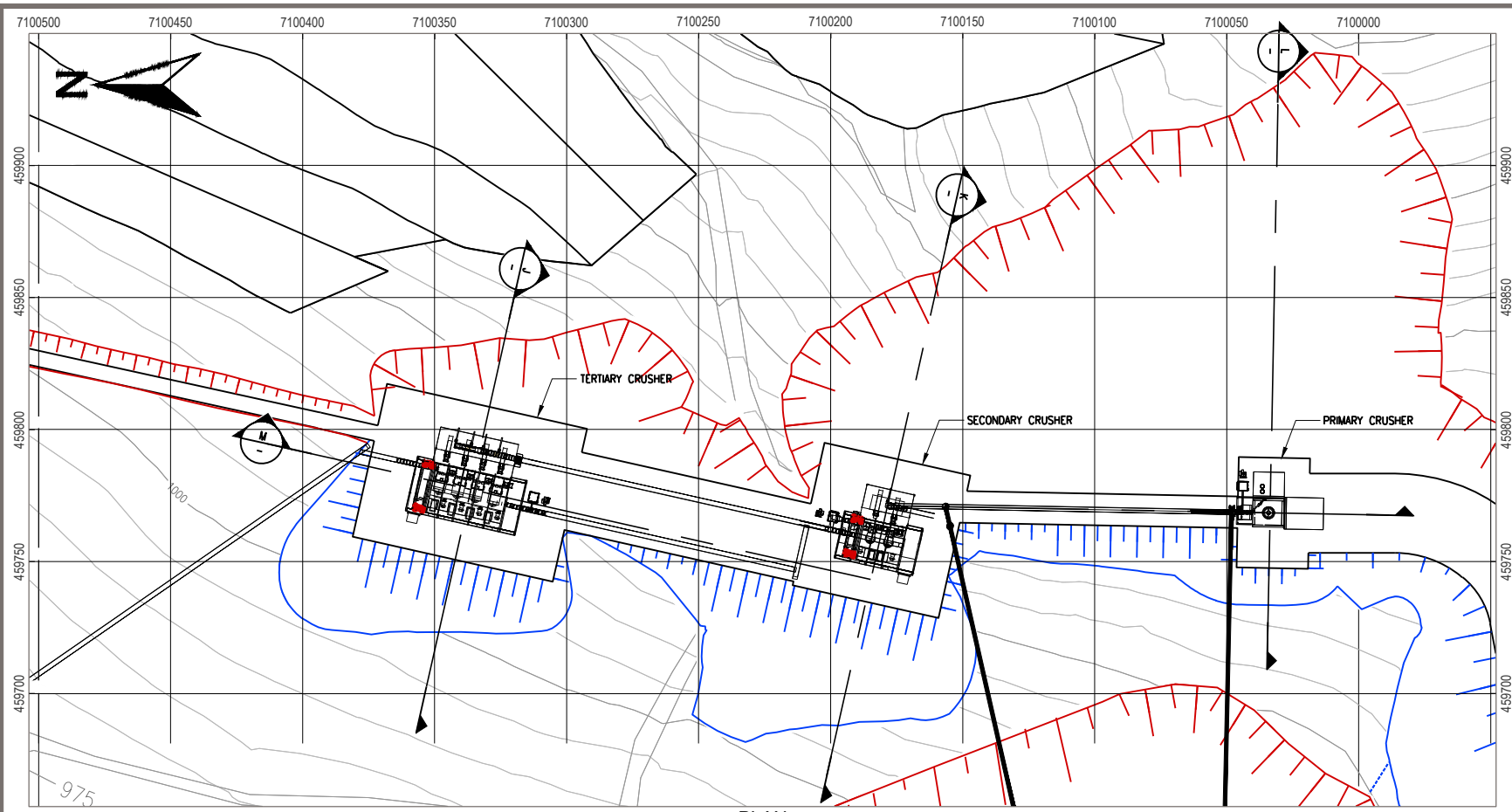
- NOTES
- All elevations are in meters.
 - Contour data received from Underhill (February 2011) UTM NAD 83.
 - 5 m Contour intervals Shown.
 - Culvert locations and sizes shall be designed by others.
 - Cut slopes are 1.5H:1V. Fill slopes are 2H:1V.
 - Potential rock fall and avalanche protection to be determined in the field by geotechnical engineer.

STATUS
ISSUED FOR REVIEW

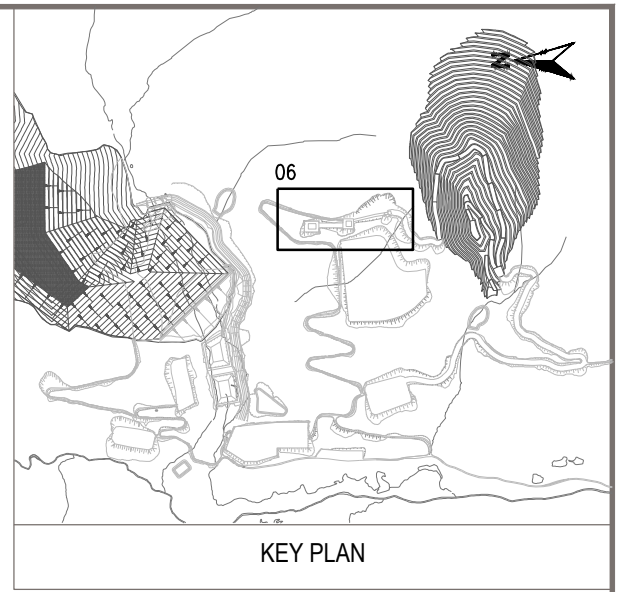
CLIENT

PROJECTION UTM Zone 8 DATUM NAD 83

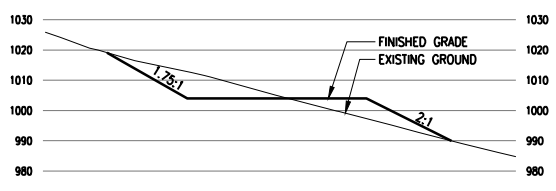
EAGLE GOLD PROJECT YUKON TERRITORY				
Civil Process Plant Plan and Typical Sections				
FILE NO. V23201707	DWN SF	CKD TG	REV 0	10130-20-305
OFFICE EBA-VANC	DATE May 1, 2013			



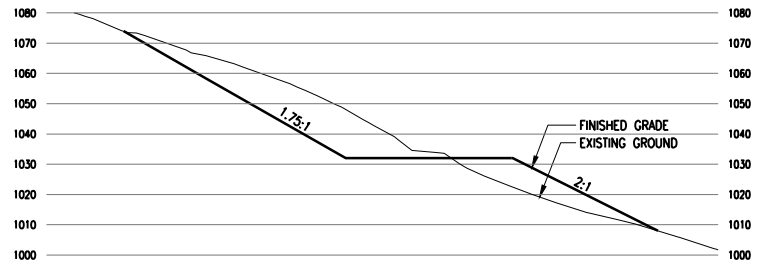
PLAN
1:2500



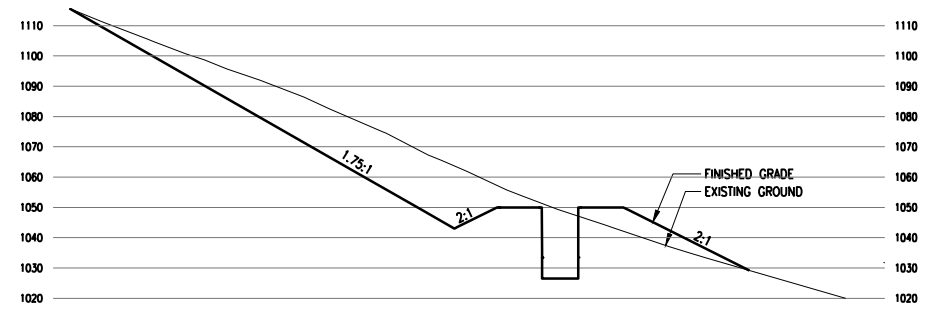
KEY PLAN



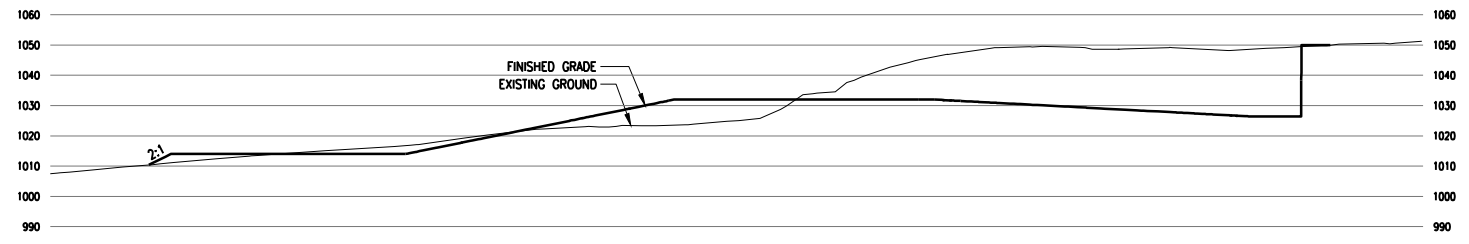
SECTION J
1:2500



SECTION K
1:2500



SECTION L
1:2500



SECTION M
1:2500

- NOTES
- All elevations are in meters.
 - Contour data received from Underhill (February 2011) UTM NAD 83.
 - 5 m Contour intervals Shown.
 - Culvert locations and sizes shall be designed by others.
 - Cut slopes are 1.5H:1V. Fill slopes are 2H:1V.
 - Potential rock fall and avalanche protection to be determined in the field by geotechnical engineer.

STATUS
ISSUED FOR REVIEW

CLIENT

EAGLE GOLD PROJECT YUKON TERRITORY			
Civil Primary, Secondary and Tertiary Crushers Plan and Typical Sections			
PROJECTION UTM Zone 8	DATUM NAD 83	FILE NO. V23201707	DWN SF
		OFFICE EBA-VANC	REV 0
		DATE May 1, 2013	
			10130-20-306