

GENERAL LEGEND

- CL - CENTERLINE
 - DIA. - DIAMETER
 - EL. - ELEVATION
 - GCL - GEOSYNTHETIC CLAY LINER
 - HDPE - HIGH DENSITY POLYETHYLENE
 - LCRS - LEAK COLLECTION AND REMOVAL SYSTEM
 - LLDPE - LINEAR LOW DENSITY POLYETHYLENE
 - MAX. - MAXIMUM
 - MIN. - MINIMUM
 - NOM. - NOMINAL
 - ODF - OVERLINER DRAIN FILL
 - PE - POLYETHYLENE
 - ROM - RUN-OF-MINE
 - TYP. - TYPICAL
 - 50m - DIMENSION IN METERS
 - 2.5:1 - 2.5 HORIZONTAL TO 1 VERTICAL SLOPE
 - ~ - APPROXIMATELY
-
- 1020 EXISTING CONTOURS (m)
 - 1020 PROPOSED GRADING CONTOURS (m)
 - EXISTING ROAD
 - EXISTING TELEPHONE LINE (OVERHEAD)
 - EXISTING ELECTRIC LINE (OVERHEAD)
 - EXISTING DRAINAGE
 - CP-5 CONTROL POINT
 - CHANNEL
 - DRAINAGE CHANNEL
 - HEAP EMBANKMENT
 - DIVERSION CHANNEL EMBANKMENT
 - EVENT PONDS
 - DIVERSION CHANNEL
 - SPILLWAY
 - PHASE 1 PAD
 - PHASE 2 PAD
 - PHASE 3 PAD

NOTES

- All elevations are in meters.
- Contour data received from Underhill (February 2011) UTM NAD 83.
- 25 m Contour intervals Shown.

STATUS
ISSUED FOR REVIEW

CLIENT

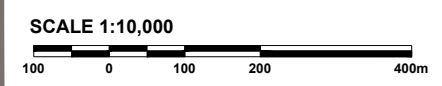
PROJECTION UTM Zone 8 | **DATUM** NAD 83

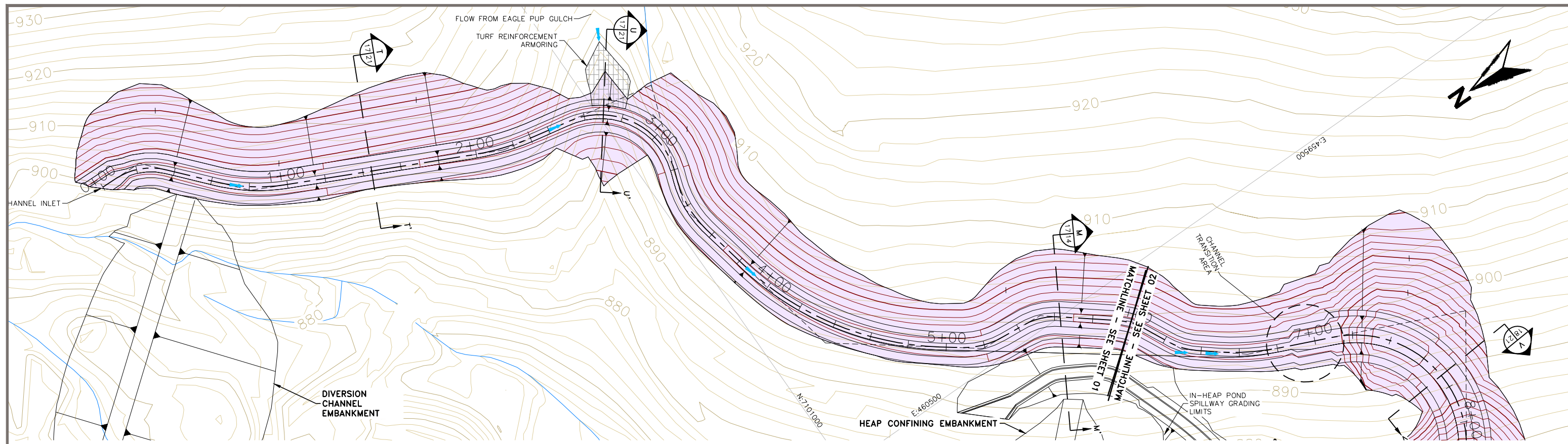
EAGLE GOLD PROJECT
YUKON TERRITORY

Heap Leach Facility
General Facilities Arrangement

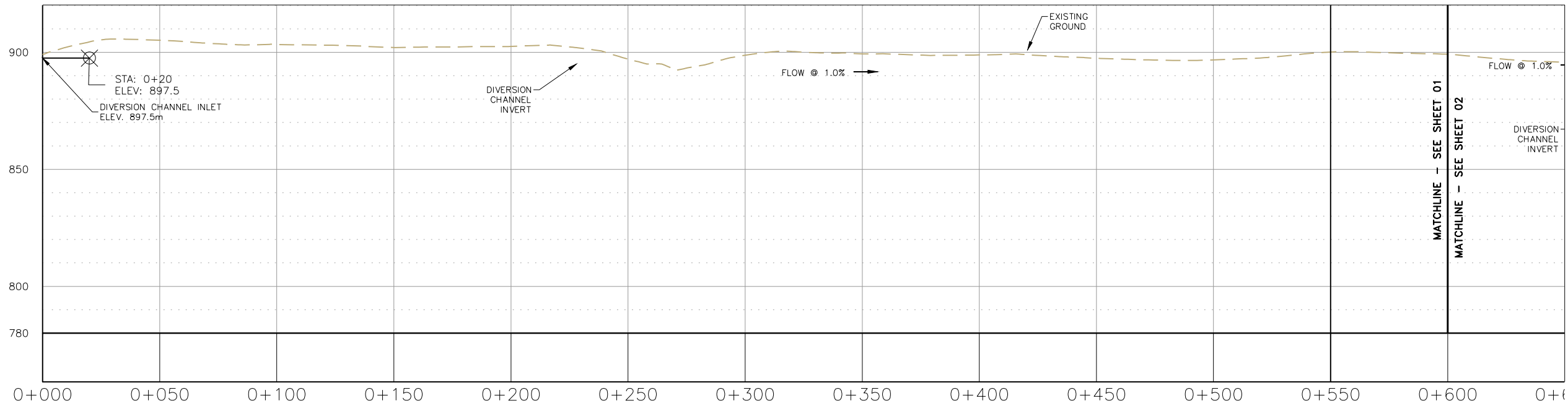
FILE NO. V23201707	DWN SF	CKD TG	REV 0
OFFICE EBA-VANC	DATE May 7, 2013		

Figure 2

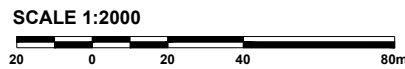




STA. 0+00-6+00 DUBLIN GULCH DIVERSION CHANNEL PLAN

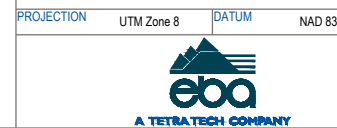


STA. 0+00-6+00 DUBLIN GULCH DIVERSION CHANNEL PROFILE



- NOTES
- All elevations are in meters.
 - Contour data received from Underhill (February 2011) UTM NAD 83.
 - 25 m Contour intervals Shown.

STATUS
ISSUED FOR REVIEW

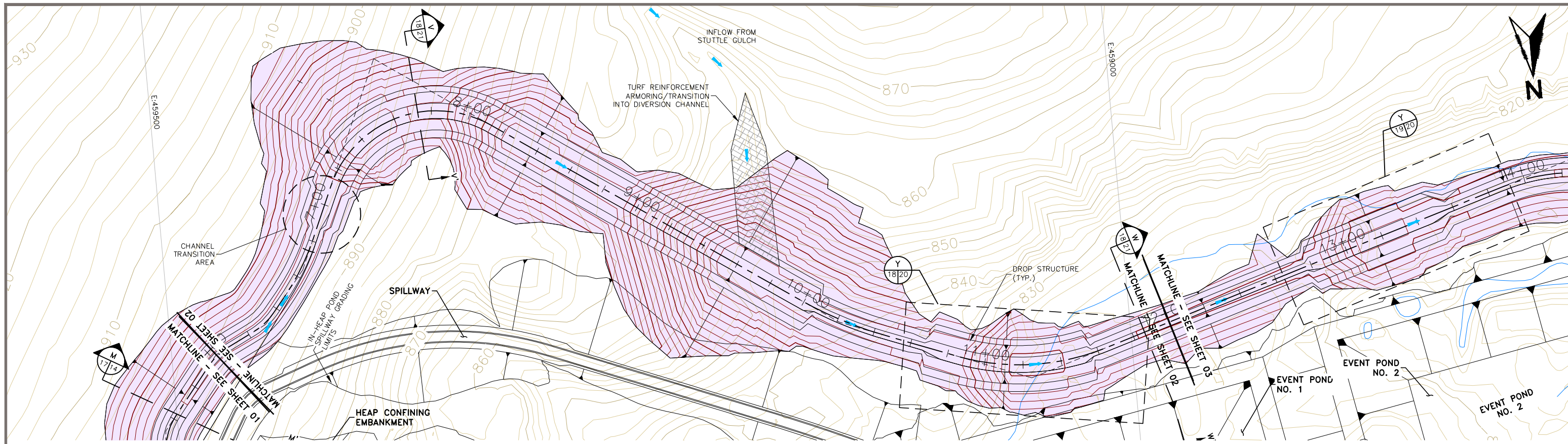


EAGLE GOLD PROJECT
YUKON TERRITORY

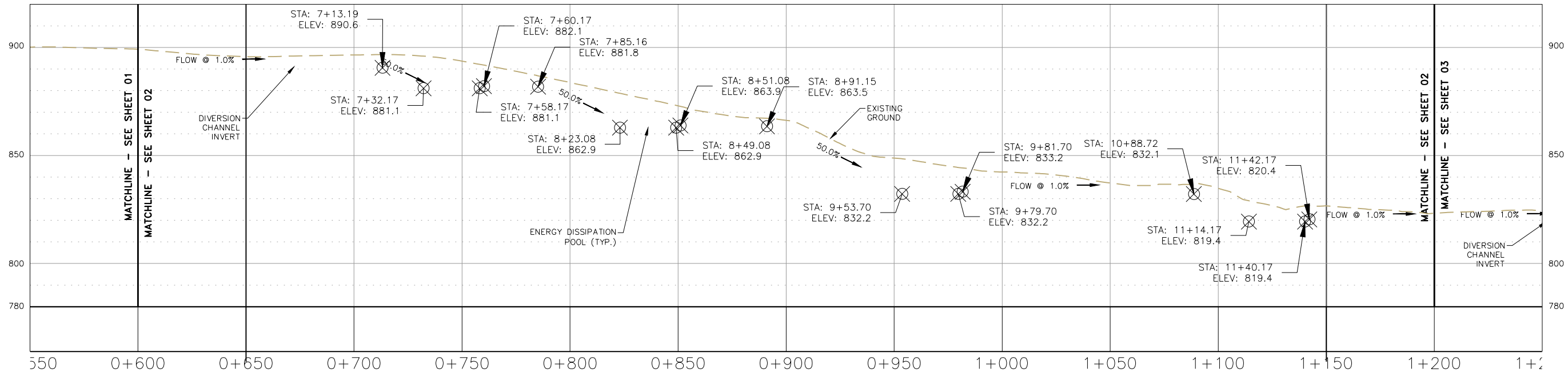
Dublin Gulch Diversion Channel
Plan and Profile Sheet 1 of 3

FILE NO. V23201707	DWN SF	CKD TG	REV 0
OFFICE EBA-VANC	DATE May 1, 2013		

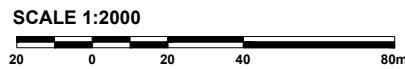
Figure 17



STA. 6+00-12+00 DUBLIN GULCH DIVERSION CHANNEL PLAN

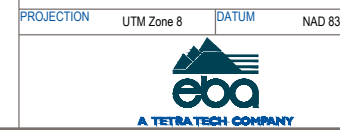


STA. 6+00-12+00 DUBLIN GULCH DIVERSION CHANNEL PROFILE



- NOTES
- All elevations are in meters.
 - Contour data received from Underhill (February 2011) UTM NAD 83.
 - 25 m Contour intervals Shown.

STATUS
ISSUED FOR REVIEW

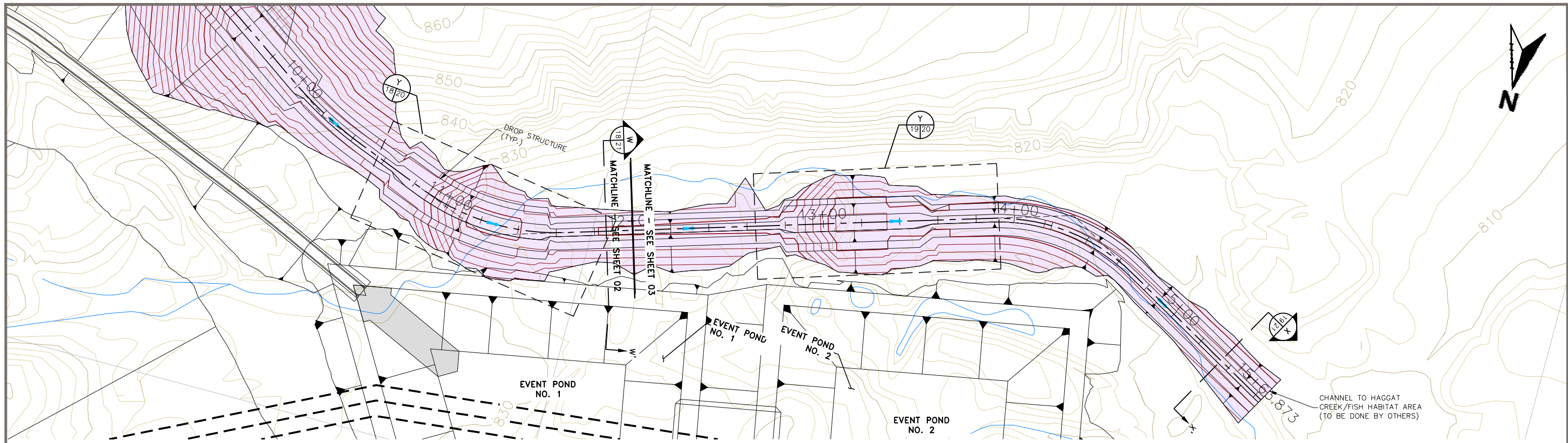


EAGLE GOLD PROJECT
YUKON TERRITORY

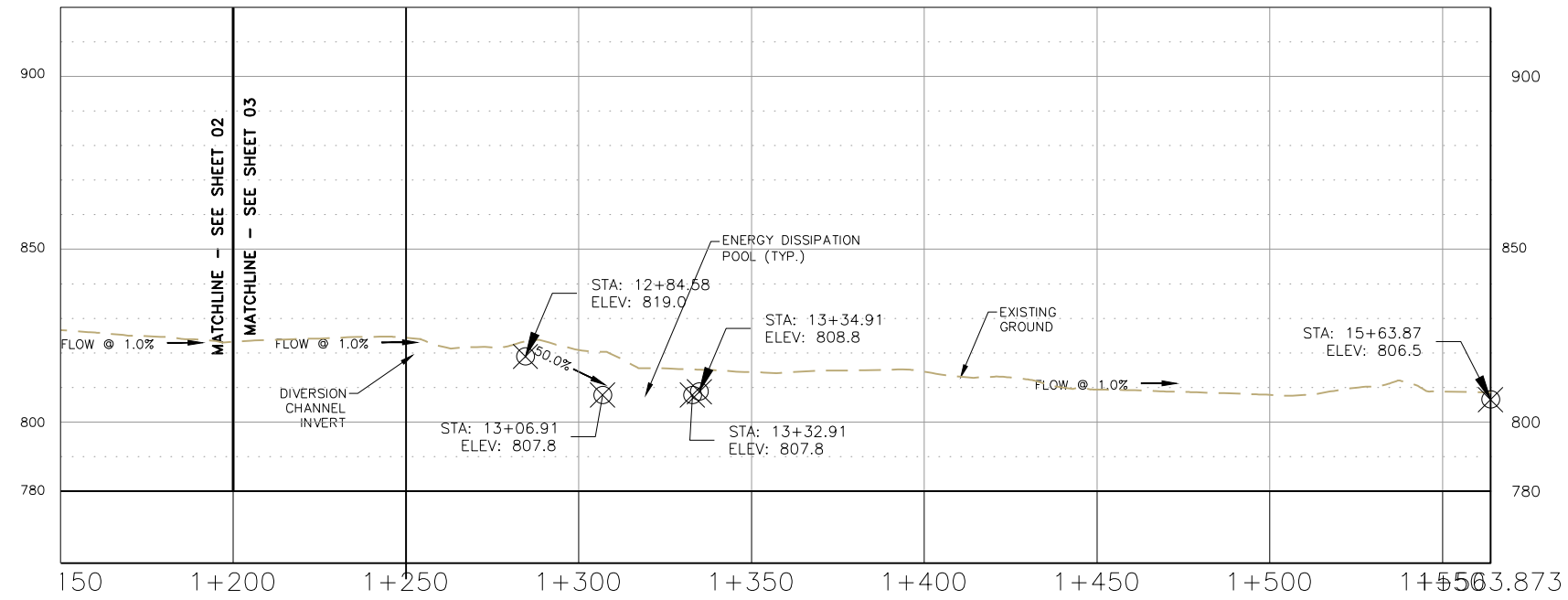
Dublin Gulch Diversion Channel
Plan and Profile Sheet 2 of 3

FILE NO. V23201707	DWN SF	CKD TG	REV 0
OFFICE EBA-VANC	DATE May 1, 2013		

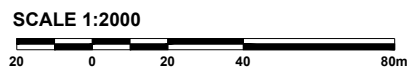
Figure 18



STA. 12+00-15+56.97 DUBLIN GULCH DIVERSION CHANNEL PLAN



STA. 12+00-15+56.97 DUBLIN GULCH DIVERSION CHANNEL PROFILE



- NOTES**
- All elevations are in meters.
 - Contour data received from Underhill (February 2011) UTM NAD 83.
 - 25 m Contour intervals Shown.

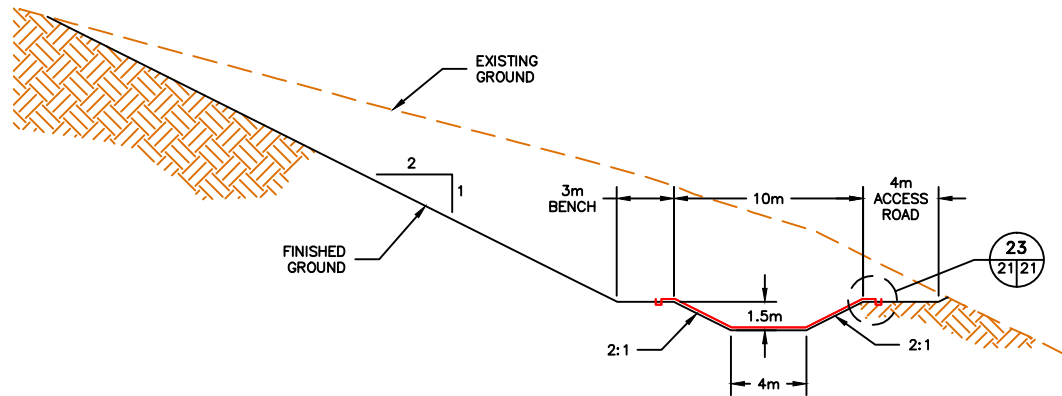
STATUS
ISSUED FOR REVIEW

CLIENT

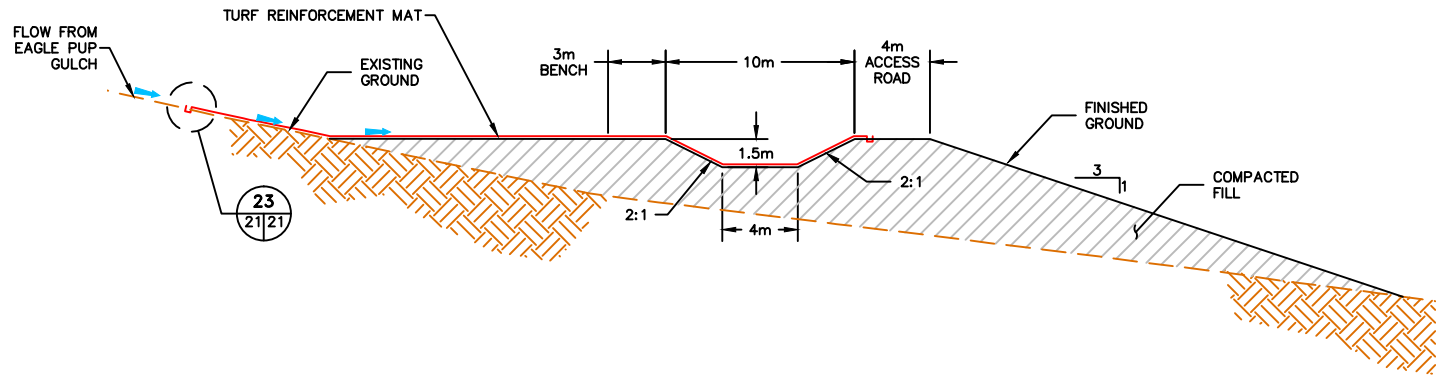
PROJECTION UTM Zone 8 **DATUM** NAD 83

EAGLE GOLD PROJECT YUKON TERRITORY			
Dublin Gulch Diversion Channel Plan and Profile Sheet 3 of 3			
FILE NO. V23201707	DWN SF	CKD TG	REV 0
OFFICE EBA-VANC	DATE May 1, 2013		

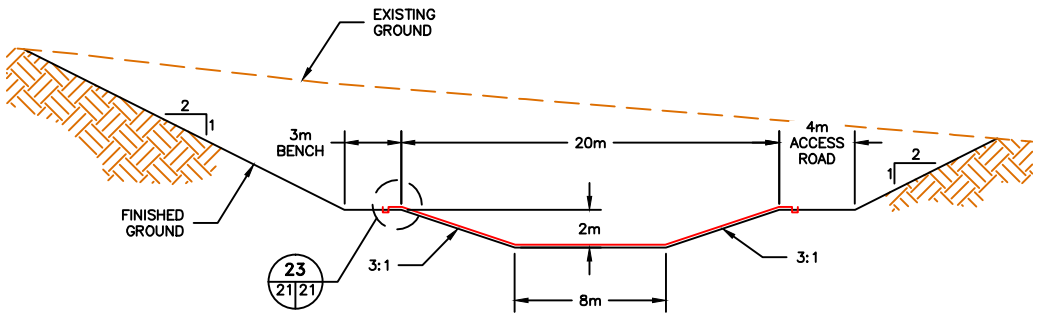
Figure 19



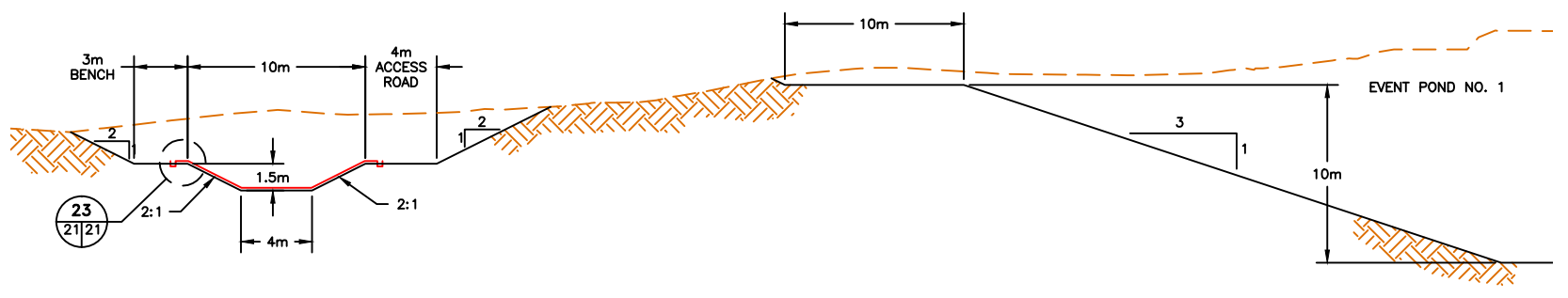
T TYPICAL DIVERSION CHANNEL SECTION - CUT
 SCALE 1:400



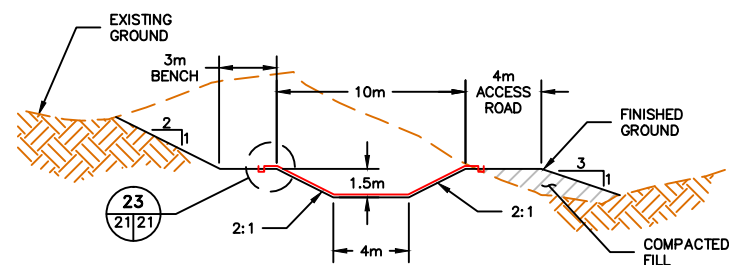
U EAGLE PUP GULCH CHANNEL INTERSECTION - FILL
 SCALE 1:400



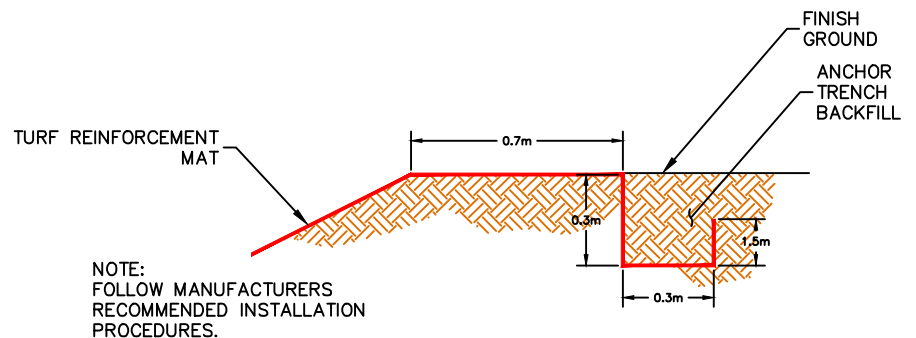
V TYPICAL DIVERSION CHANNEL SECTION - CUT
 SCALE 1:400



W TYPICAL DIVERSION CHANNEL SECTION NEAR PONDS - CUT
 SCALE 1:400



X TYPICAL DIVERSION CHANNEL SECTION - CUT & FILL
 SCALE 1:400



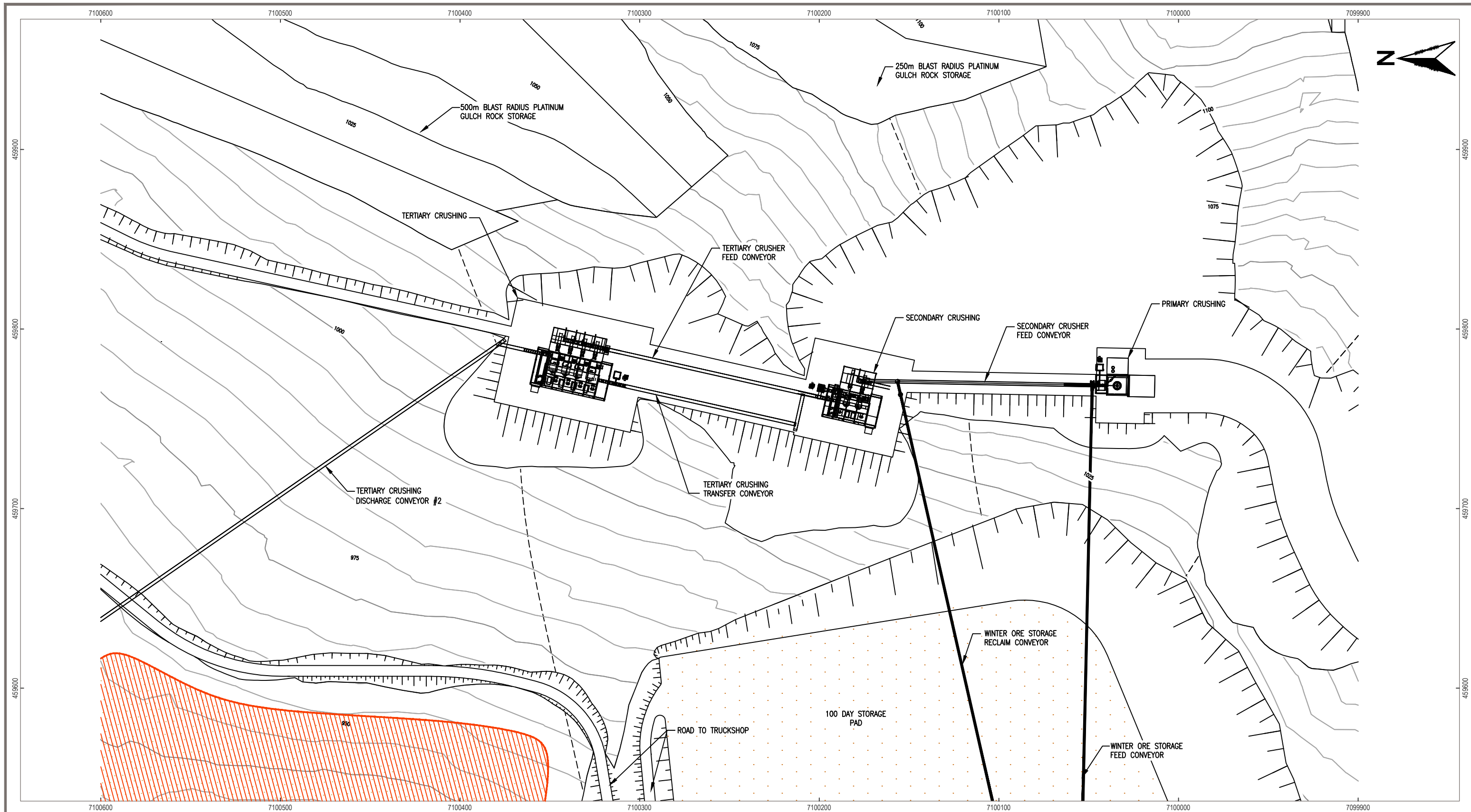
23 CHANNEL ARMOR ANCHOR TRENCH DETAIL
 SCALE 1:25

STATUS
ISSUED FOR REVIEW

CLIENT

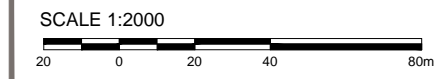
 PROJECTION

EAGLE GOLD PROJECT YUKON TERRITORY				
Dublin Gulch Diversion Channel Sections and Details				
FILE NO. V23201707	DWN SF	CKD TG	REV 0	Figure 21
OFFICE EBA-VANC	DATE May 1, 2013			



LEGEND

- Upper Haggart Creek Basin Boundary (Environmental Data Summary Report Prepared by Stantec, June 2011)
- Project Footprint Submitted in Project Proposal
- Earthwork Fill
- Earthwork Cut
- Pump
- Fish Habitat Compensation Area (Preliminary Fish Habitat Compensation Plan Prepared by Stantec, December 2010)
- Stockpile Area Topsoil



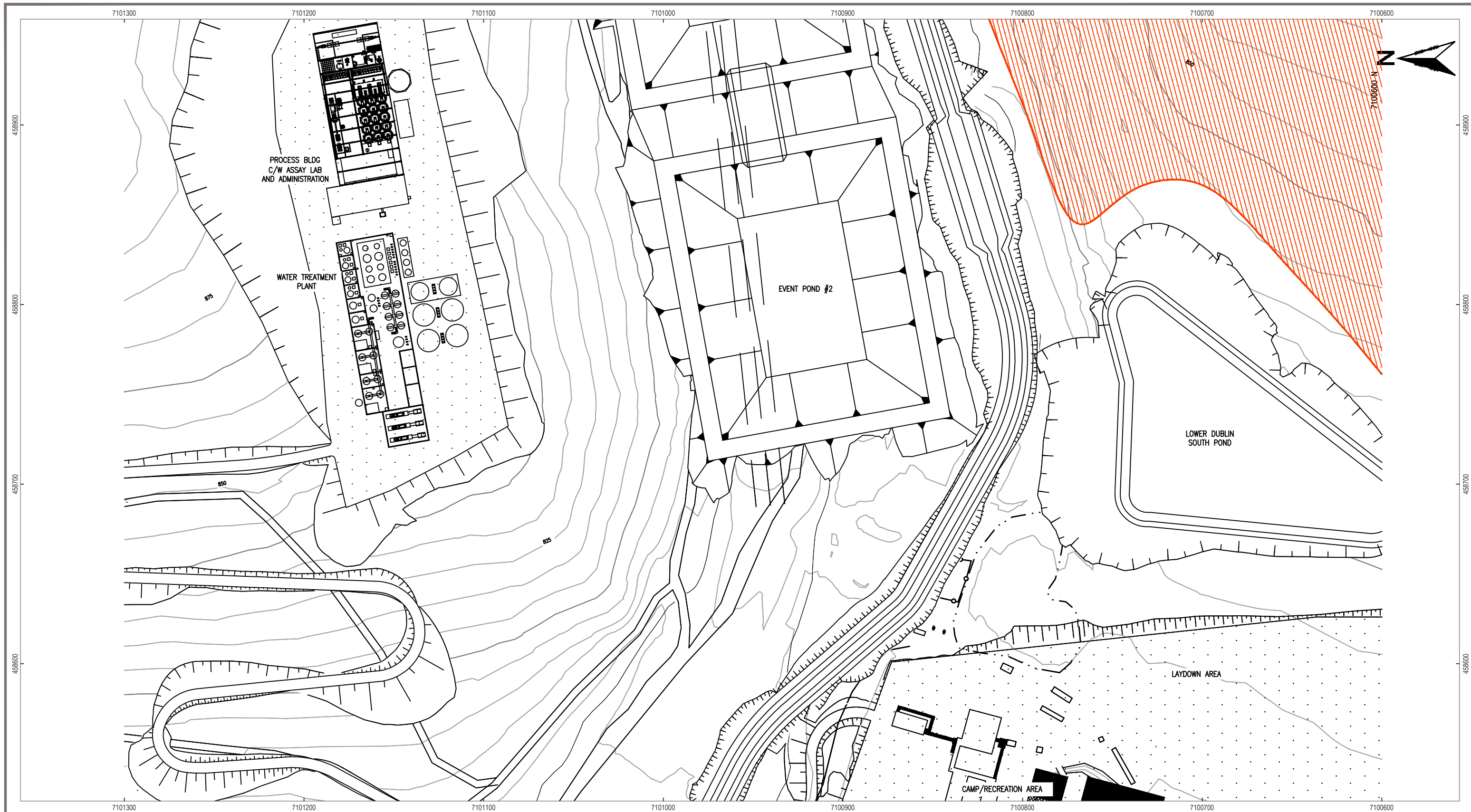
- NOTES**
- All elevations are in meters.
 - Contour data received from Underhill (February 2011) UTM NAD 83.
 - 25 m Contour intervals Shown.

STATUS
ISSUED FOR REVIEW

CLIENT

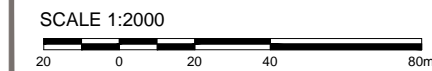
PROJECTION UTM Zone 8 DATUM NAD 83

EAGLE GOLD PROJECT YUKON TERRITORY			
Crushing Plant General Arrangement			
FILE NO. V23201707	DWN SF	CKD TG	REV 0
OFFICE EBA-VANC	DATE May 1, 2013	10100-10-003	



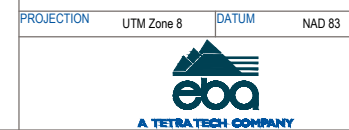
LEGEND

- Upper Haggart Creek Basin Boundary (Environmental Data Summary Report Prepared by Stantec, June 2011)
- Project Footprint Submitted in Project Proposal
- Earthwork Fill
- Earthwork Cut
- Pump
- Fish Habitat Compensation Area (Preliminary Fish Habitat Compensation Plan Prepared by Stantec, December 2010)
- Stockpile Area Topsoil



- NOTES**
- All elevations are in meters.
 - Contour data received from Underhill (February 2011) UTM NAD 83.
 - 25 m Contour intervals Shown.

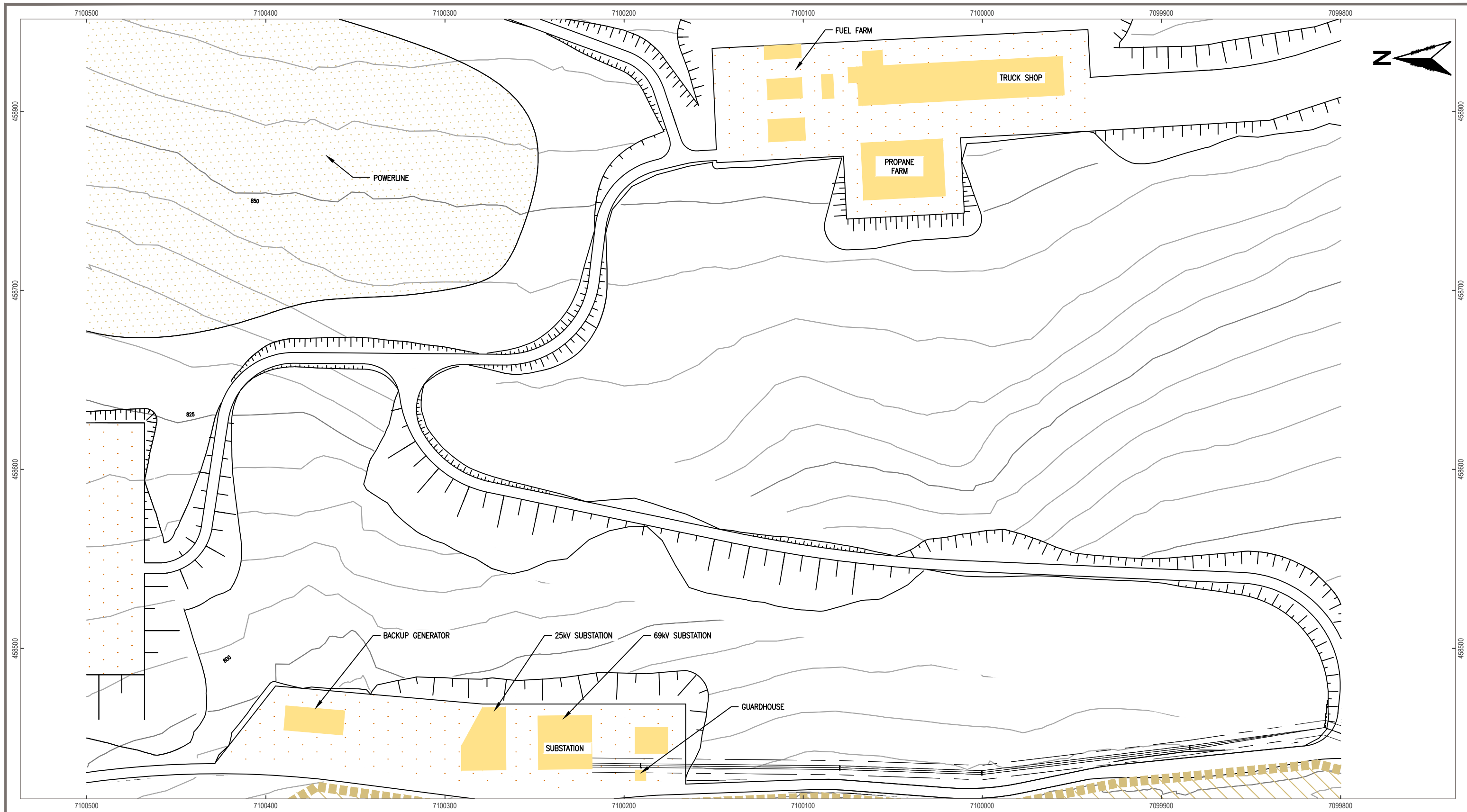
STATUS
ISSUED FOR REVIEW



**EAGLE GOLD PROJECT
YUKON TERRITORY**

Process Plant General Arrangement

PROJECTION	UTM Zone 8	DATUM	NAD 83	FILE NO.	DWN	CKD	REV	10100-10-004
				V23201707	SF	TG	0	
				OFFICE EBA-VANC	DATE May 1, 2013			



LEGEND

- Upper Haggart Creek Basin Boundary (Environmental Data Summary Report Prepared by Stantec, June 2011)
- Project Footprint Submitted in Project Proposal
- Earthwork Fill
- Earthwork Cut
- Pump (P)
- Fish Habitat Compensation Area (Preliminary Fish Habitat Compensation Plan Prepared by Stantec, December 2010)
- Stockpile Area Topsoil

SCALE 1:2000

NOTES

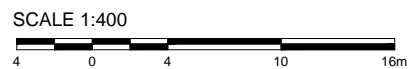
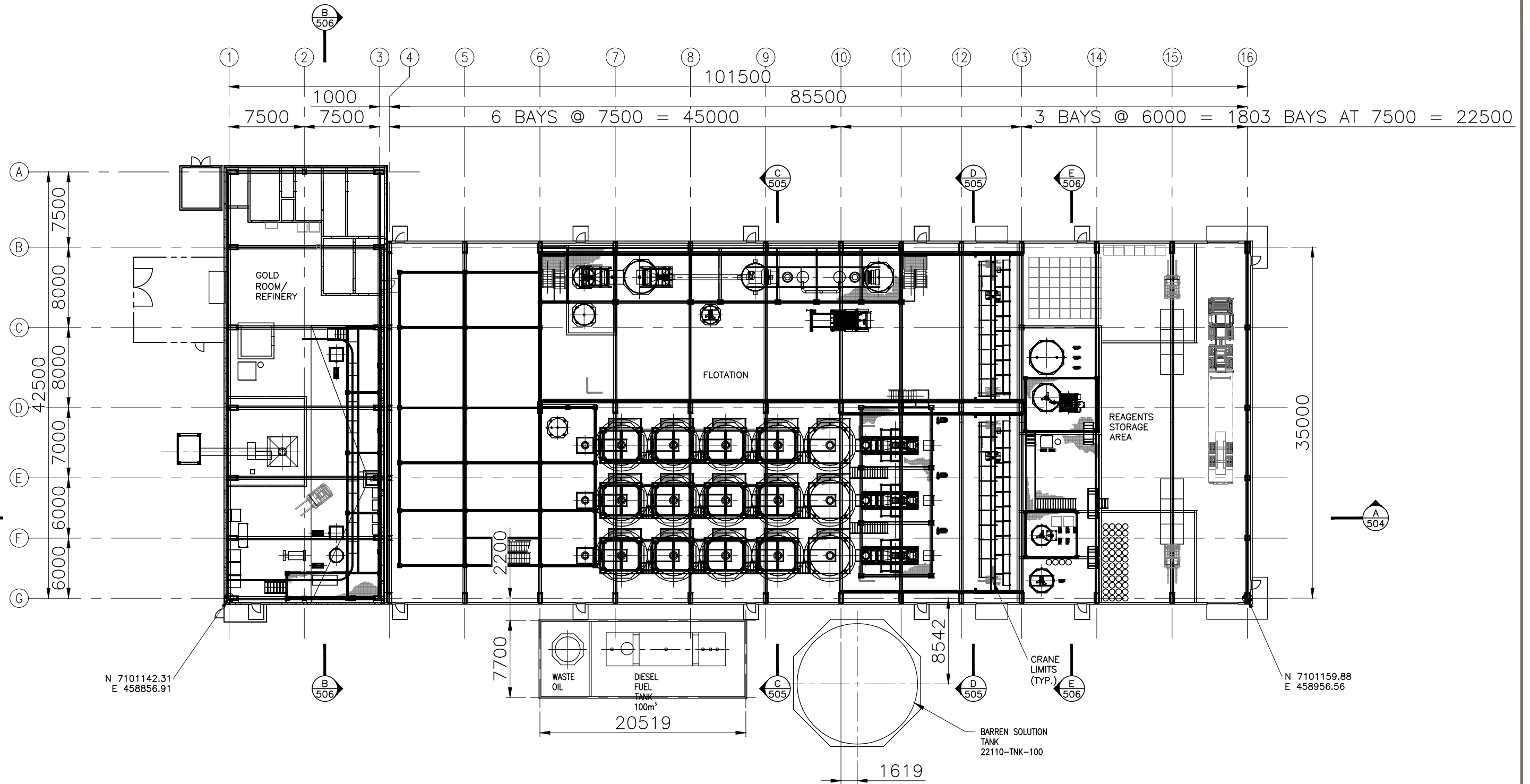
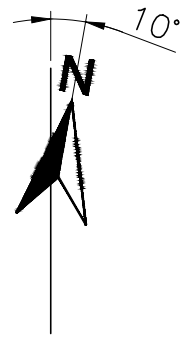
- All elevations are in meters.
- Contour data received from Underhill (February 2011) UTM NAD 83.
- 25 m Contour intervals Shown.

STATUS
ISSUED FOR REVIEW

CLIENT

PROJECTION UTM Zone 8 **DATUM** NAD 83

EAGLE GOLD PROJECT YUKON TERRITORY				
Ancillary Buildings General Arrangement				
FILE NO. V23201707	DWN SF	CKD TG	REV 0	10100-10-005
OFFICE EBA-VANC	DATE May 1, 2013			



STATUS
ISSUED FOR REVIEW



PROJECTION

DATUM



CLIENT
EAGLE GOLD PROJECT
YUKON TERRITORY

Recovery Plant General Arrangement

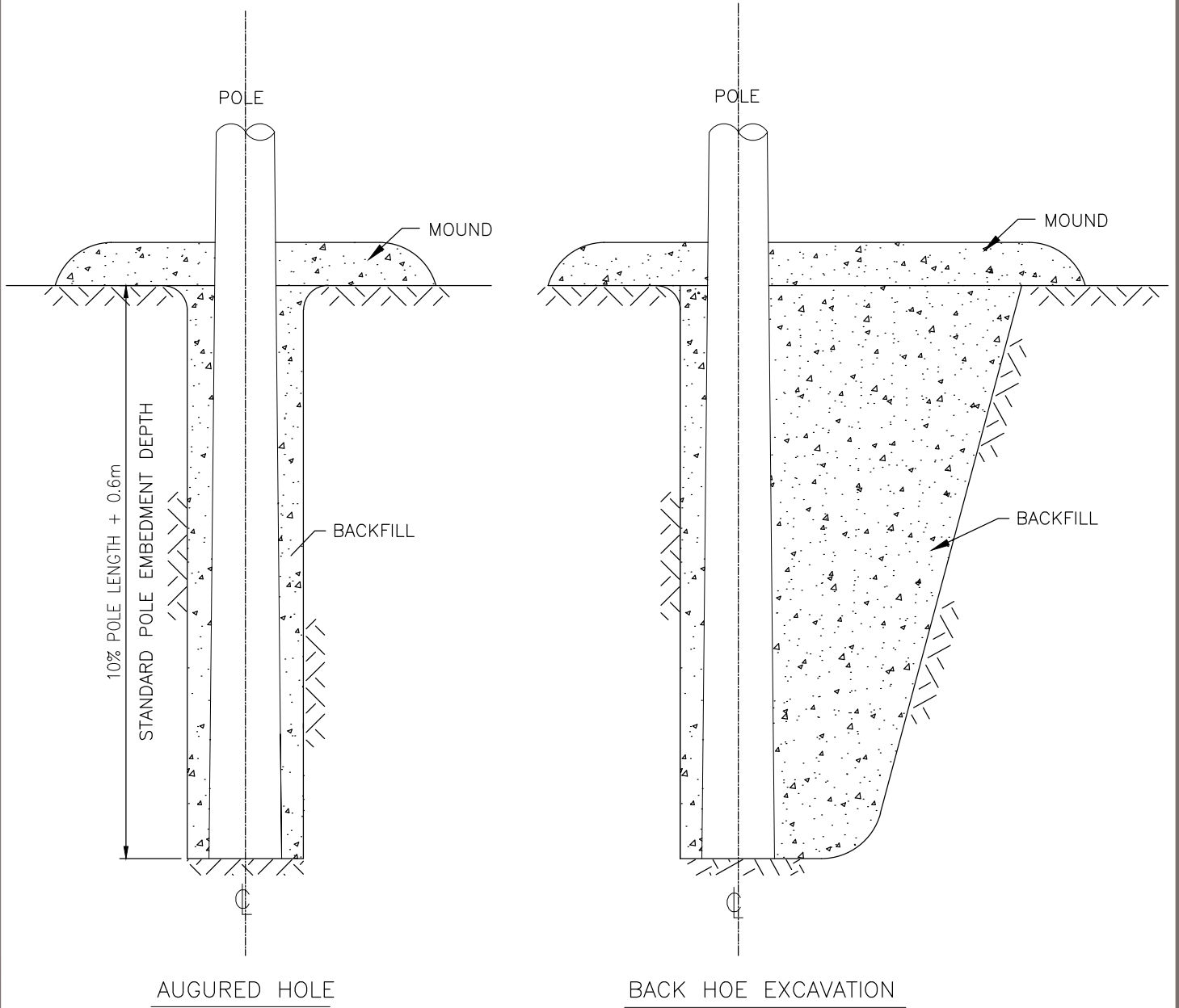
FILE NO.
V23201707

DWN	CKD	REV
SF	TG	0

OFFICE
EBA-VANC

DATE
May 1, 2013

Figure 1



STATUS
ISSUED FOR REVIEW

CLIENT



EAGLE GOLD PROJECT
YUKON TERRITORY

Wood Pole Foundations, Standard Embedment Method



FILE NO.
V23201707

DWN
SF

CKD
TG

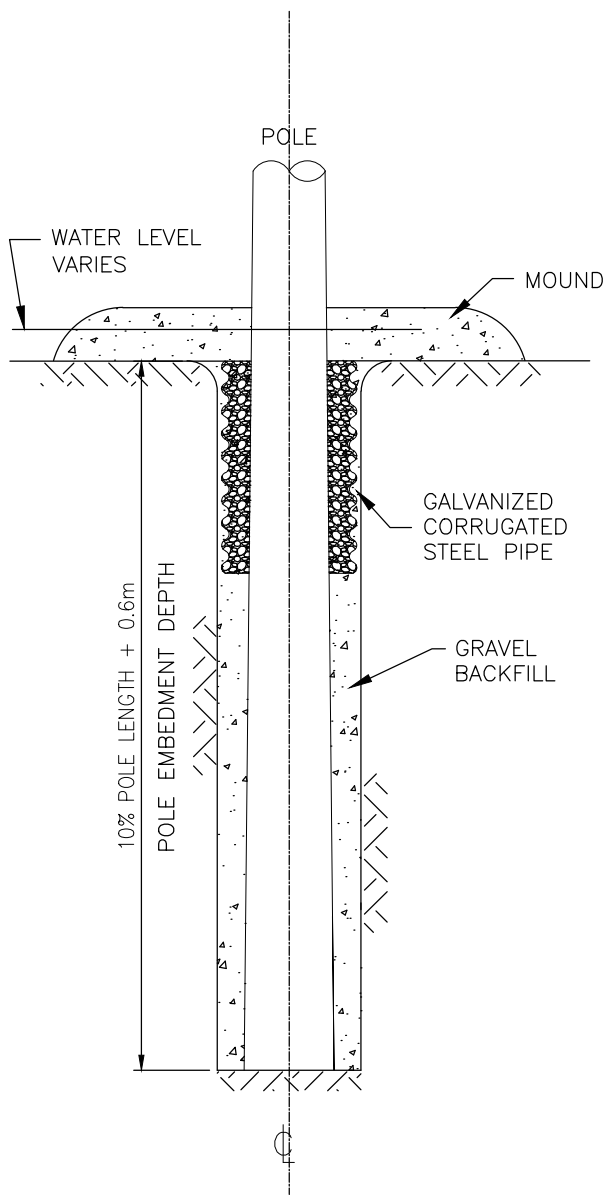
REV
0

OFFICE
EBA-VANC

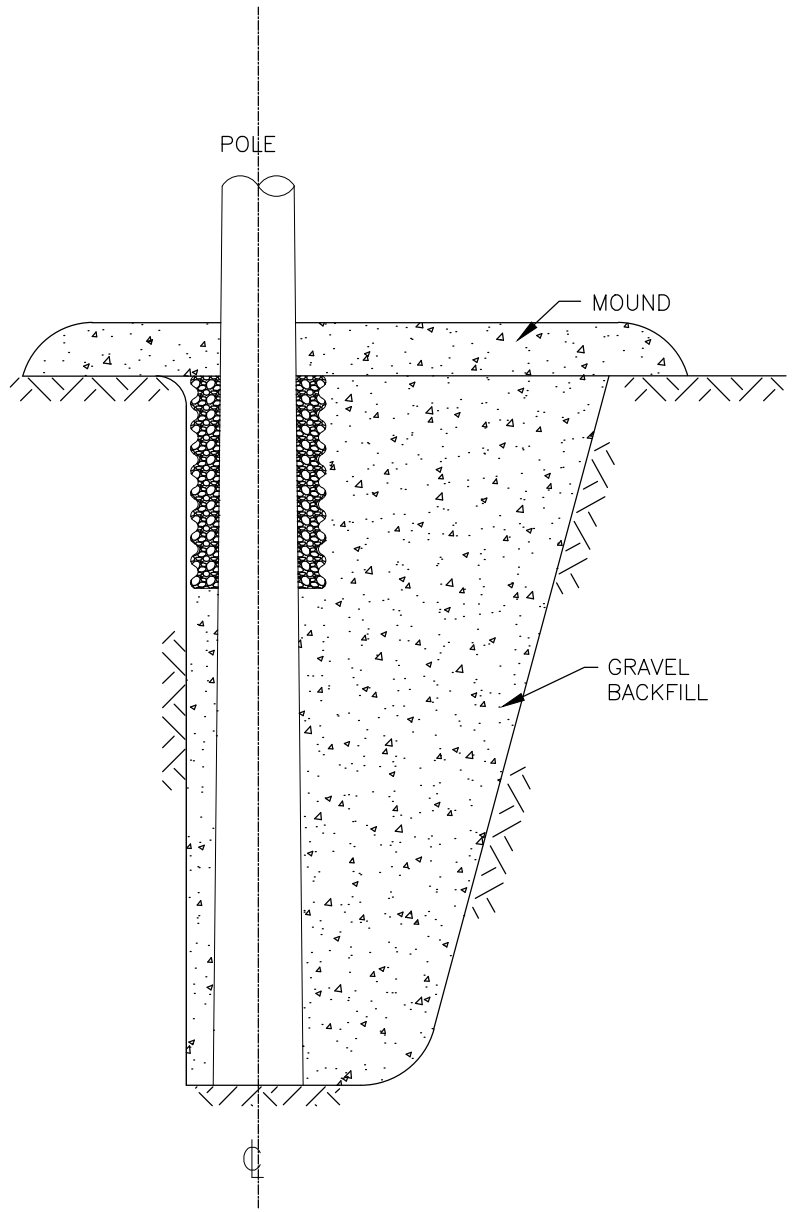
DATE
May 7, 2013

149-T-DD-SK1 Sht 5

PROFESSIONAL SEAL



AUGURED HOLE



BACK HOE EXCAVATION

STATUS
ISSUED FOR REVIEW

CLIENT



EAGLE GOLD PROJECT
YUKON TERRITORY

Wood Pole Foundations, Embedment in Poor Soil



FILE NO.
V23201707

DWN
SF

CKD
TG

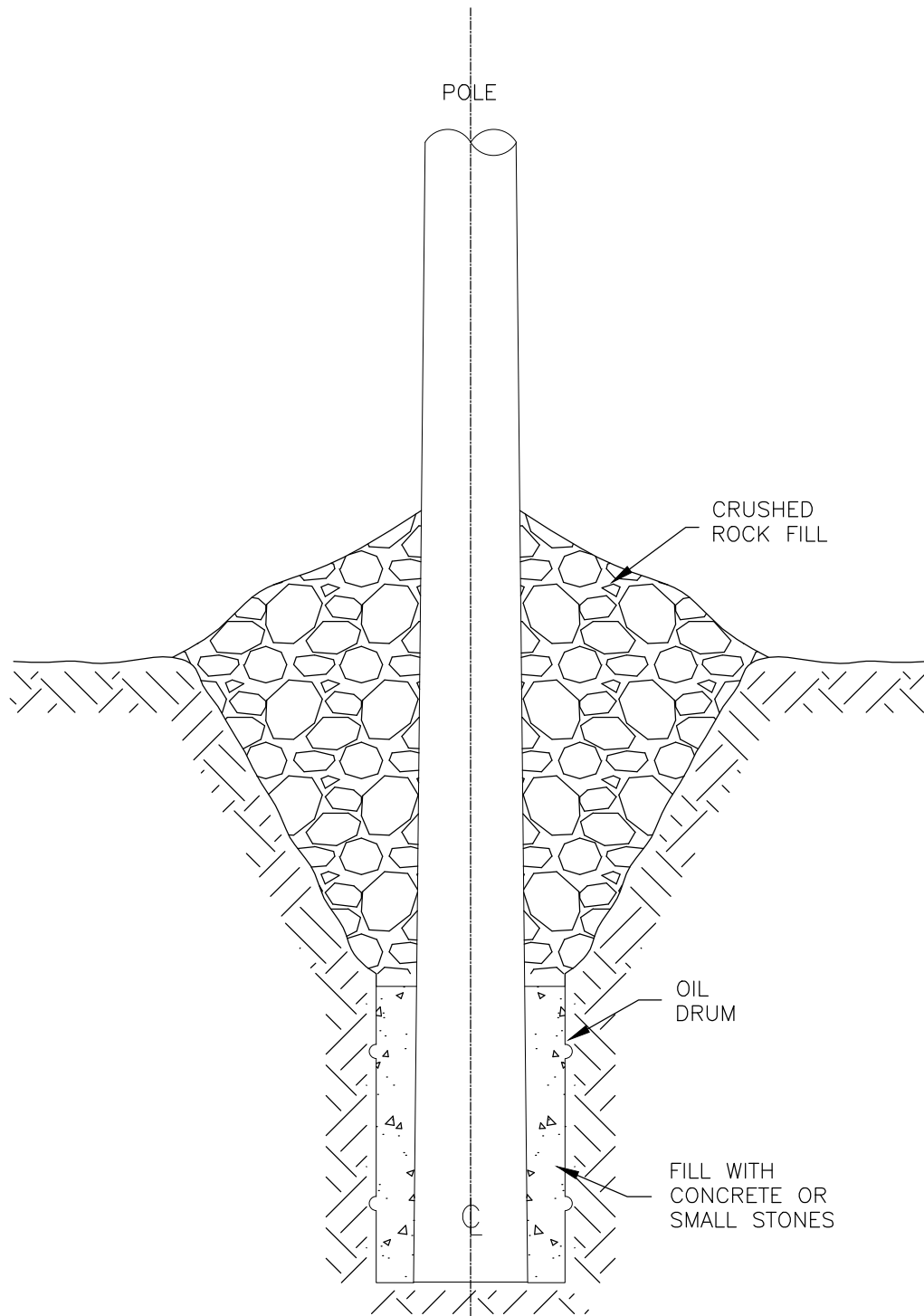
REV
0

OFFICE
EBA-VANC

DATE
May 7, 2013

149-T-DD-SK1 Sht 6

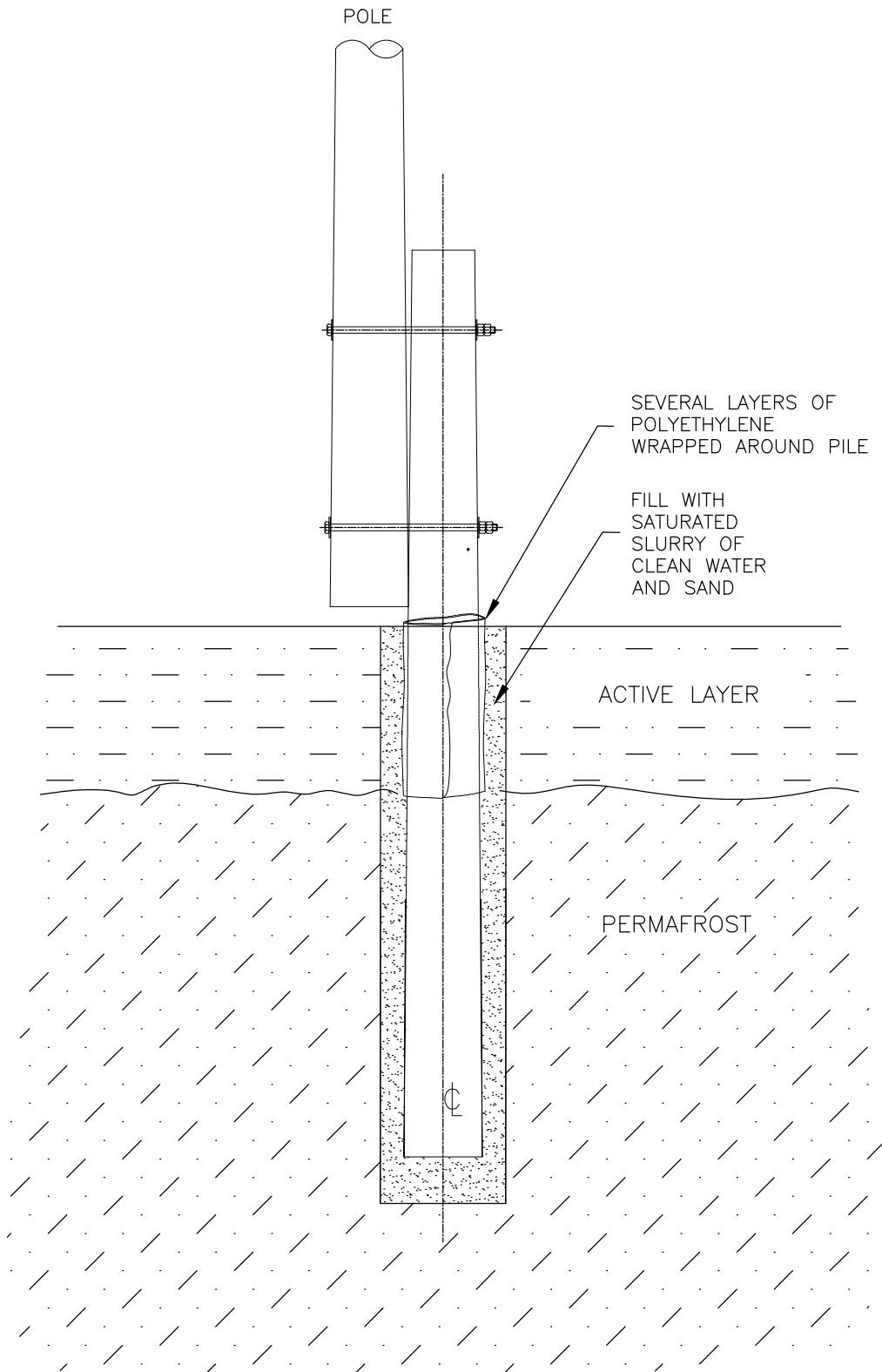
PROFESSIONAL SEAL



POLE FOUNDATION
IN MARSHY GROUND

STATUS
ISSUED FOR REVIEW

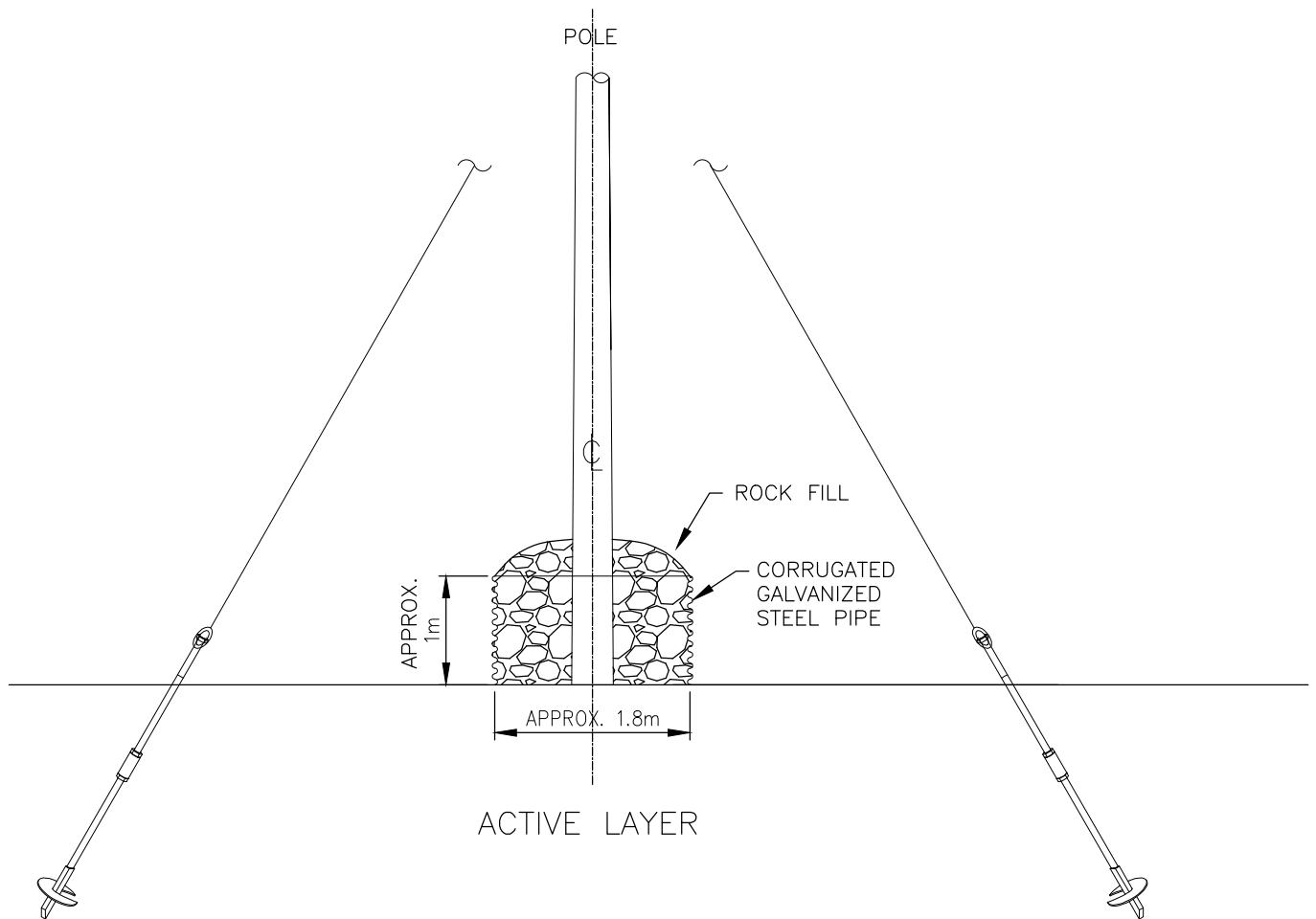
		<p>CLIENT</p> 	<p>EAGLE GOLD PROJECT YUKON TERRITORY</p>				
		 <p>A TETRA TECH COMPANY</p>	<p>FILE NO. V23201707</p>	<p>DWN SF</p>	<p>CKD TG</p>	<p>REV 0</p>	<p>149-T-DD-SK1 Sht 7</p>
	<p>PROFESSIONAL SEAL</p>		<p>OFFICE EBA-VANC</p>	<p>DATE May 7, 2013</p>			



SLURRIED PILE FOUNDATION

STATUS
ISSUED FOR REVIEW

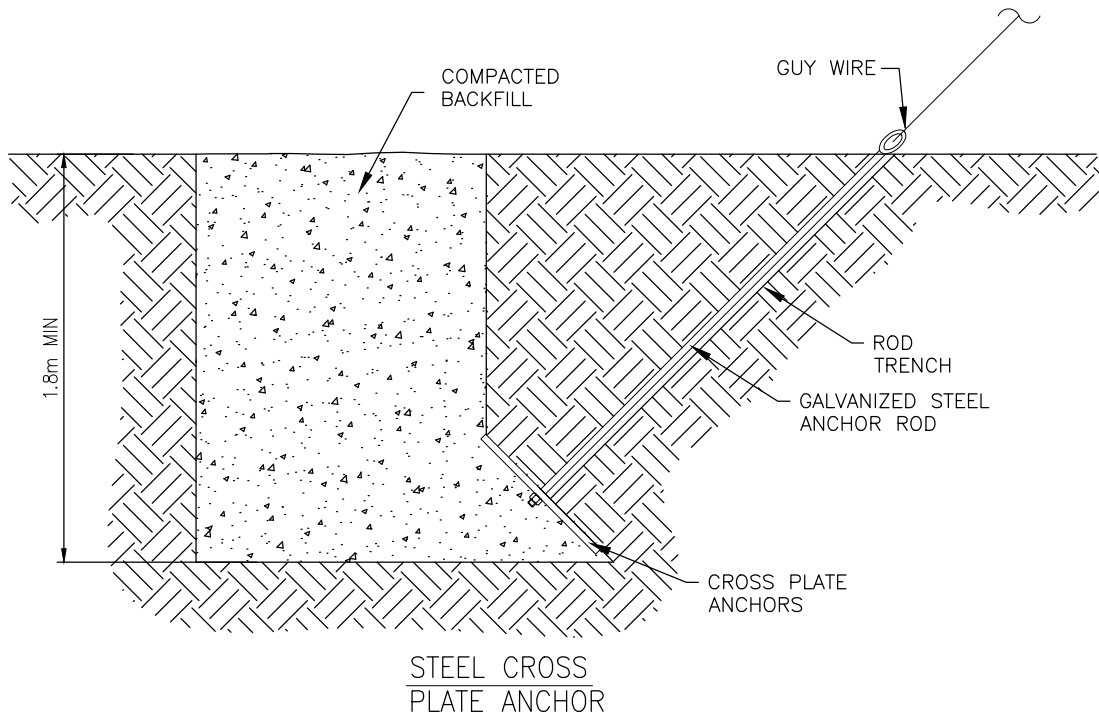
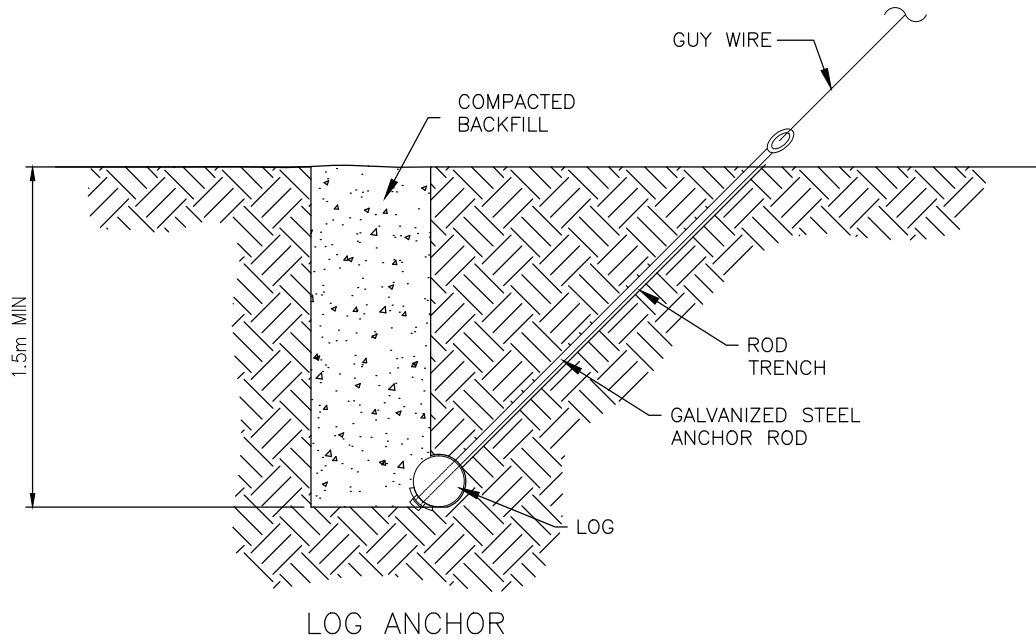
		CLIENT		EAGLE GOLD PROJECT YUKON TERRITORY			
				Wood Pole Foundations in Permafrost with Shallow Active Layer			
				FILE NO. V23201707	DWN SF	CKD TG	REV 0
PROFESSIONAL SEAL		OFFICE EBA-VANC	DATE May 7, 2013				



POLE CRIB FOUNDATION

STATUS
ISSUED FOR REVIEW

		CLIENT	EAGLE GOLD PROJECT YUKON TERRITORY			
			Wood Pole Foundations on Permafrost			
			FILE NO. V23201707	DWN SF	CKD TG	REV 0
PROFESSIONAL SEAL	OFFICE EBA-VANC	DATE May 7, 2013				



STATUS
ISSUED FOR REVIEW

CLIENT



EAGLE GOLD PROJECT
YUKON TERRITORY

Wood Pole Foundations in Swampy Area



FILE NO.
V23201707

DWN
SF

CKD
TG

REV
0

OFFICE
EBA-VANC

DATE
May 7, 2013

149-T-DD-SK1 Sht 10

PROFESSIONAL SEAL