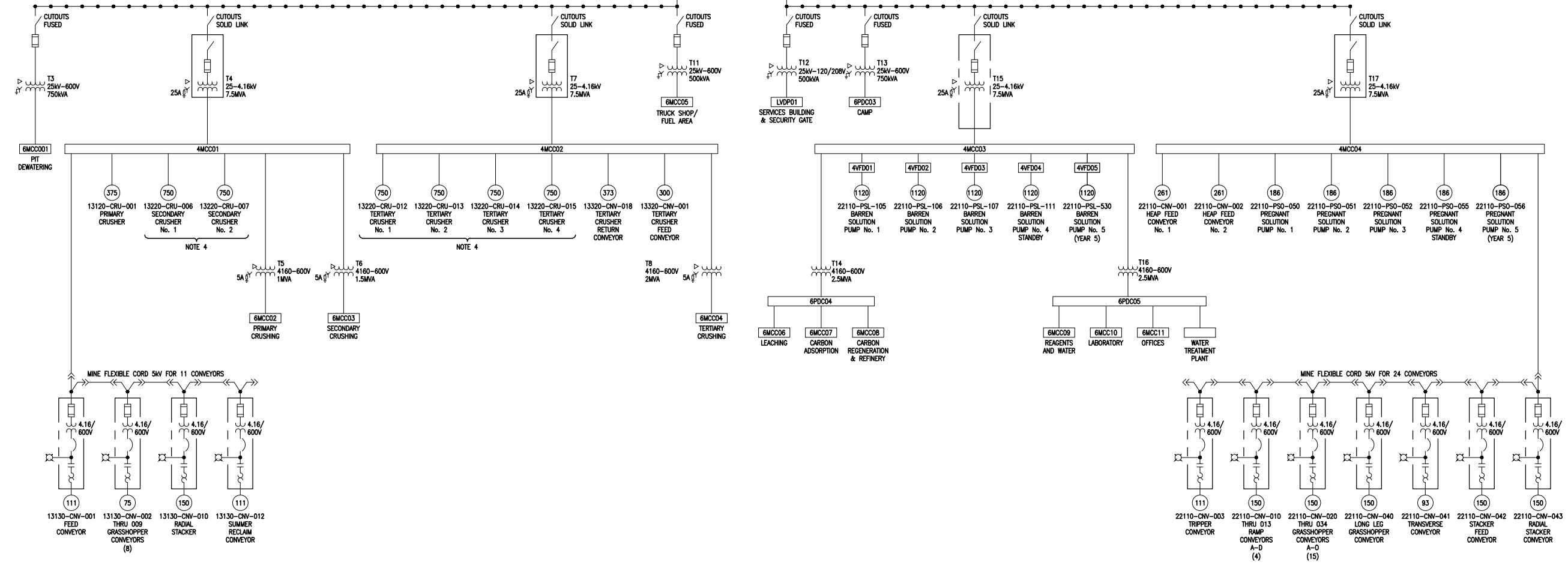


**LEGEND**

- SS SOFT START
- VFD VARIABLE FREQUENCY DRIVE
- (XXX) MOTOR SIZE IN KW

**NOTES:**

1. HIGH SIDE TRANSFORMER CONNECTION TO BE CONFIRMED. YEC TO ADVISE.
2. 25KV SYSTEM GROUND WILL BE ISOLATED FROM 69KV SUBSTATION GROUND TO AVOID TRANSFER OF POTENTIAL INTO MINE SITE.
3. GENERATOR PACKAGES SHALL INCLUDE PARALLELING SWITCHGEAR AND PROTECTION & CONTROLS (WHERE APPLICABLE).
4. YEC TO CONFIRM WHETHER GENERATORS CAN OPERATE IN PARALLEL WITH UTILITY FOR MOTOR STARTING. SOFT STARTERS MAY BE REQUIRED.
5. MOTOR RATINGS SHOWN AT ULTIMATE BUILDOUT. VFD'S SIZED FOR 1120KW MOTORS. MOTORS FOR PHASE 1 & 2 MAY HAVE LOWER RATING.



NOT TO SCALE

STATUS  
ISSUED FOR REVIEW

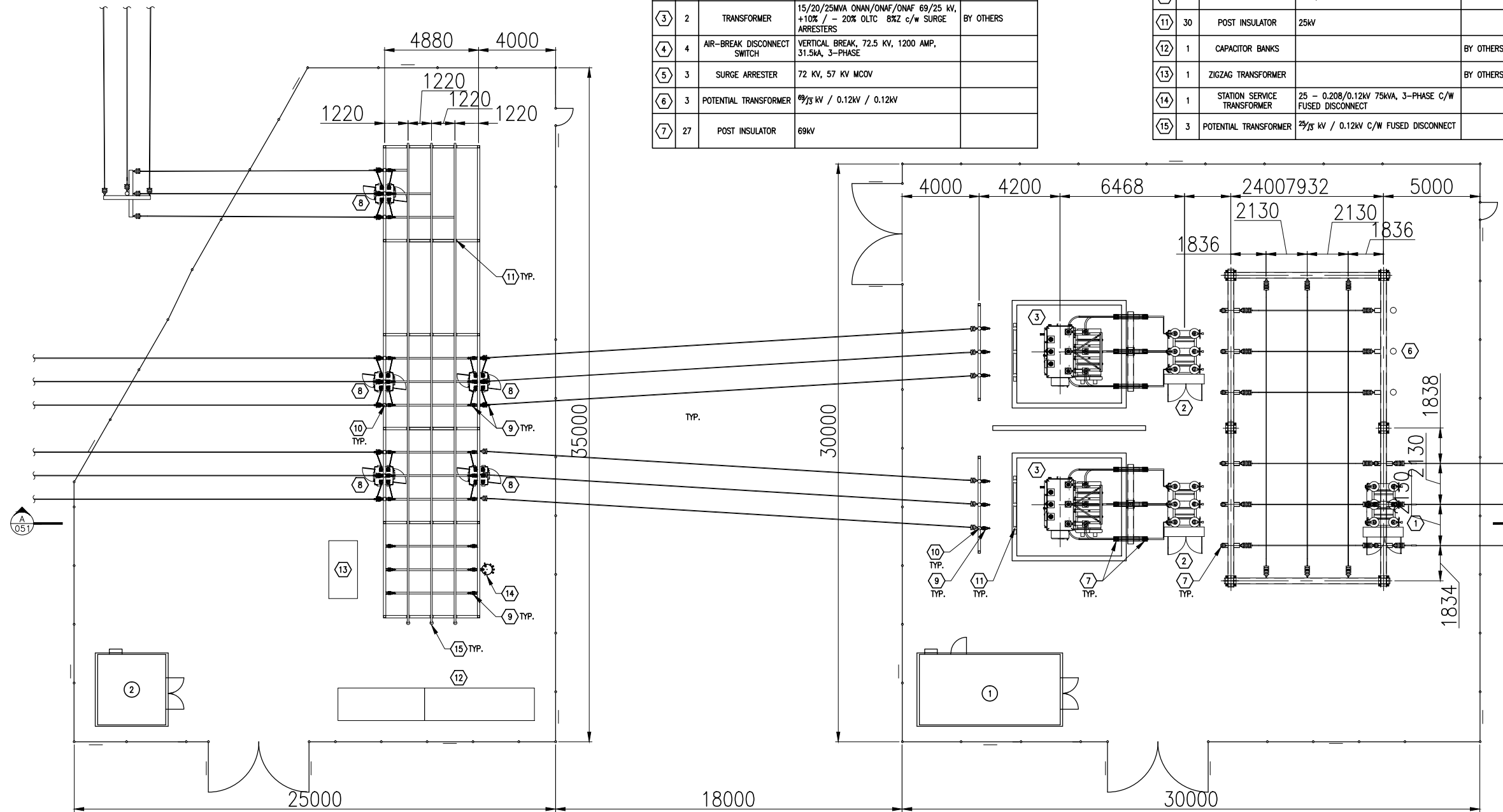
		<b>EAGLE GOLD PROJECT</b> <b>YUKON TERRITORY</b>	
<b>Power Site Distribution Single Line Diagram Baseline</b>			
CLIENT 	PROJECTION 	DATUM 	FILE NO. V23201707
STATUS ISSUED FOR REVIEW		DWN SF	CKD TG
OFFICE EBA-VANC		DATE May 7, 2013	REV 0
			<b>10100-18-001</b>



E-HOUSE ROOM SCHEDULE			
ITEM	DESCRIPTION	DIMENSIONS	SPECIFICATION
①	69KV SUBSTATION PROTECTION BUILDING	3648 x 7296	BY OTHERS
②	25KV SUBSTATION PROTECTION BUILDING	3648 x 3648	BY OTHERS

BILL OF MATERIALS				
ITEM	QTY	NAME	DESCRIPTION	SPECIFICATION
①	1	CIRCUIT BREAKER	69 KV, 1200 A, 31.5 kA DEAD TANK c/w RELAYING AND UTILITY METERING CTS ON BOTH PRIMARY AND SECONDARY BUSHINGS	
②	2	CIRCUIT BREAKER	69 KV, 1200 A, 31.5 kA DEAD TANK c/w RELAYING CTS	
③	2	TRANSFORMER	15/20/25MVA ONAN/ONAF/ONAF 69/25 KV, +10% / - 20% OLTC 8X2 c/w SURGE ARRESTERS	BY OTHERS
④	4	AIR-BREAK DISCONNECT SWITCH	VERTICAL BREAK, 72.5 KV, 1200 AMP, 31.5kA, 3-PHASE	
⑤	3	SURGE ARRESTER	72 KV, 57 KV MCOV	
⑥	3	POTENTIAL TRANSFORMER	69/15 KV / 0.12KV / 0.12KV	
⑦	27	POT INSULATOR	69KV	

BILL OF MATERIALS				
ITEM	QTY	NAME	DESCRIPTION	SPECIFICATION
⑧	5	CIRCUIT BREAKER	25KV, 1200A, 25kA	
⑨	18	DISCONNECT SWITCH	VERTICAL BREAK, 25KV 1200A, 25kA, 3-PHASE	
⑩	15	SURGE ARRESTER	27KV, 22KV MCOV	
⑪	30	POT INSULATOR	25KV	
⑫	1	CAPACITOR BANKS		BY OTHERS
⑬	1	ZIGZAG TRANSFORMER		BY OTHERS
⑭	1	STATION SERVICE TRANSFORMER	25 - 0.208/0.12KV 75kVA, 3-PHASE C/W FUSED DISCONNECT	
⑮	3	POTENTIAL TRANSFORMER	25/15 KV / 0.12KV C/W FUSED DISCONNECT	



NOTE  
All dimensions are approximate and to be verified during detailed design

CLIENT



EAGLE GOLD PROJECT  
YUKON TERRITORY

Power Site Distribution 69KV Substation Layout



STATUS  
ISSUED FOR REVIEW

PROJECTION

DATUM



FILE NO.  
V23201707

DWN SF  
CKD TG  
REV 0

OFFICE  
EBA-VANC

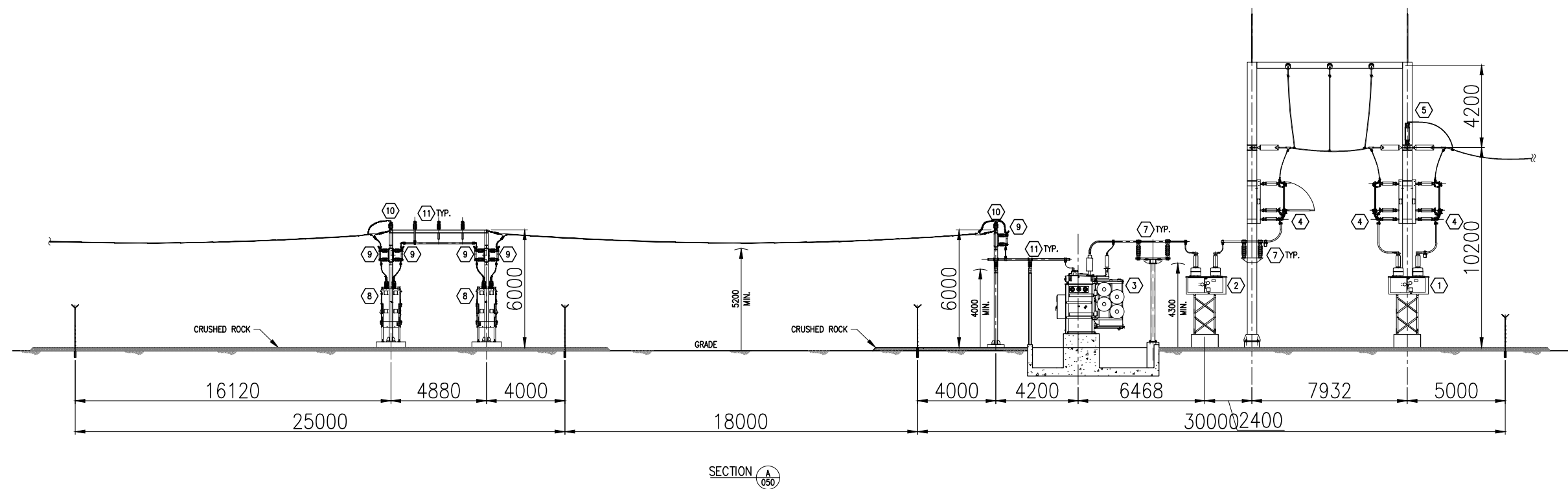
DATE  
May 7, 2013

10100-18-050

E-HOUSE ROOM SCHEDULE			
ITEM	DESCRIPTION	DIMENSIONS	SPECIFICATION
①	69KV SUBSTATION PROTECTION BUILDING	3648 x 7296	BY OTHERS
②	25KV SUBSTATION PROTECTION BUILDING	3648 x 3648	BY OTHERS

BILL OF MATERIALS				
ITEM	QTY	NAME	DESCRIPTION	SPECIFICATION
①	1	CIRCUIT BREAKER	69 KV, 1200 A, 31.5 kA DEAD TANK c/w RELAYING AND UTILITY METERING CTS ON BOTH PRIMARY AND SECONDARY BUSHINGS	
②	2	CIRCUIT BREAKER	69 KV, 1200 A, 31.5 kA DEAD TANK c/w RELAYING CTS	
③	2	TRANSFORMER	15/20/25MVA ONAN/ONAF/ONAF 69/25 KV, +10% / - 20% OLTC 8%Z c/w SURGE ARRESTERS	BY OTHERS
④	4	AIR-BREAK DISCONNECT SWITCH	VERTICAL BREAK, 72.5 KV, 1200 AMP, 31.5kA, 3-PHASE	
⑤	3	SURGE ARRESTER	72 KV, 57 KV MCOV	
⑥	3	POTENTIAL TRANSFORMER	69/3 KV / 0.12KV / 0.12KV	
⑦	27	POST INSULATOR	69KV	

BILL OF MATERIALS				
ITEM	QTY	NAME	DESCRIPTION	SPECIFICATION
⑧	5	CIRCUIT BREAKER	25KV, 1200A, 25kA	
⑨	18	DISCONNECT SWITCH	VERTICAL BREAK, 25KV 1200A, 25kA, 3-PHASE	
⑩	15	SURGE ARRESTER	27KV, 22KV MCOV	
⑪	30	POST INSULATOR	25KV	
⑫	1	CAPACITOR BANKS		BY OTHERS
⑬	1	ZIGZAG TRANSFORMER		BY OTHERS
⑭	1	STATION SERVICE TRANSFORMER	25 - 0.208/0.12 KV 75kVA, 3-PHASE C/W FUSED DISCONNECT	
⑮	3	POTENTIAL TRANSFORMER	25/3 KV / 0.12KV C/W FUSED DISCONNECT	



NOTE  
All dimensions are approximate and to be verified during detailed design



EAGLE GOLD PROJECT  
YUKON TERRITORY

Power Site Distribution 69kV Substation Section



STATUS  
ISSUED FOR REVIEW

PROJECTION

DATUM



FILE NO.  
V23201707

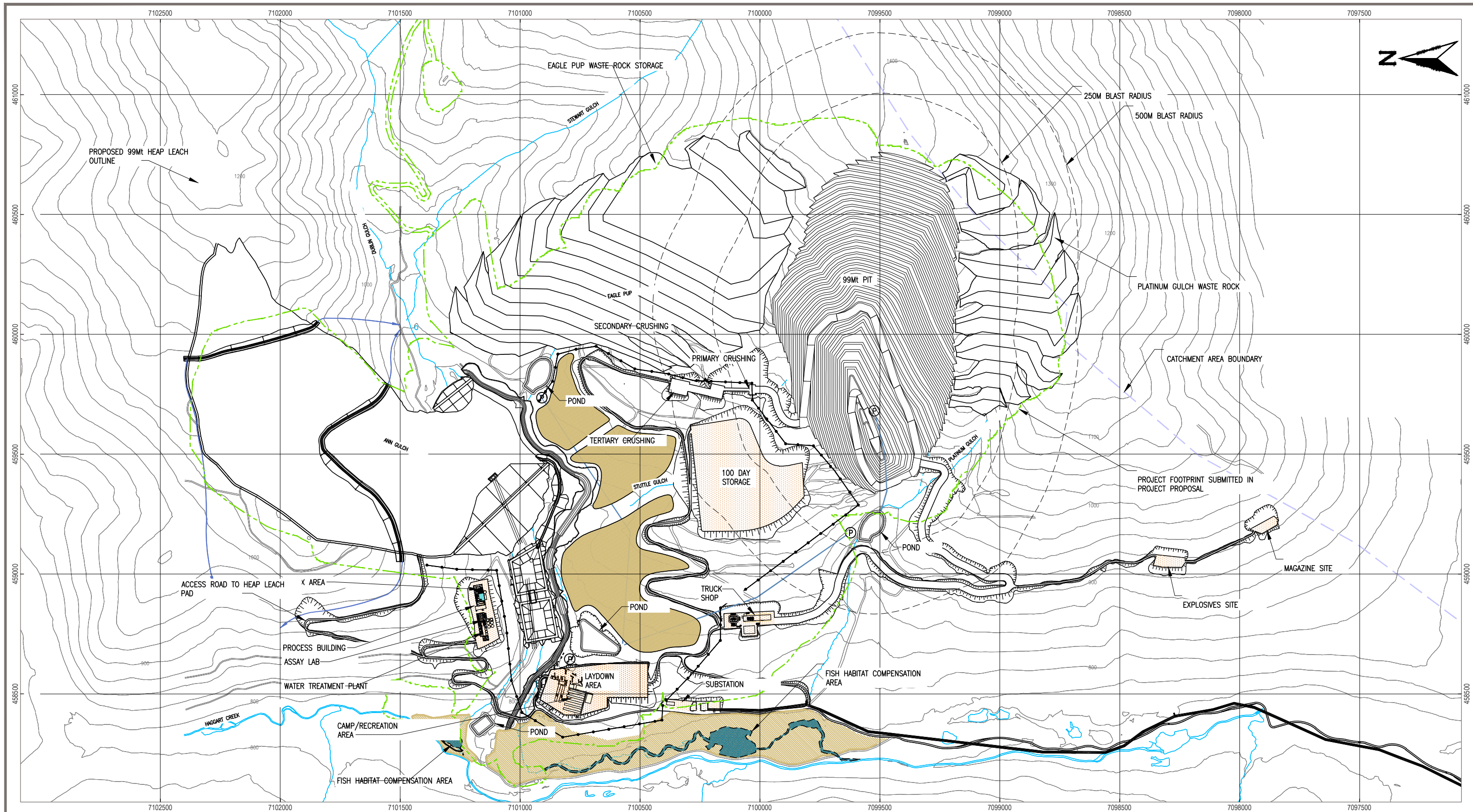
DWN SF  
CKD TG  
REV 0

OFFICE  
EBA-VANC

DATE  
May 7, 2013

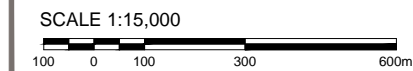
10100-18-051





**LEGEND**

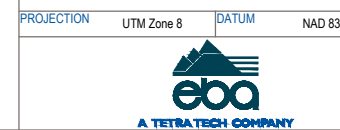
- |   |   |                  |
|---|---|------------------|
| — Site Infrastructure & Facilities            | ■ Reclamation Materials Stockpile Areas             | ▬ Earthwork Fill |
| — Haggart Creek Access Road                   | — Transmission Line                                 | ▬ Earthwork Cut  |
| — Watercourses                                | — 25 kV Overhead Line                               | ○ Contour        |
| --- Watercourses (to be diverted or infilled) | — Catchment Area Boundary                           | Ⓟ Pump           |
| ▨ Fish Habitat Compensation Area              | --- Project Footprint Submitted in Project Proposal |                  |



**NOTES**

- All elevations are in meters.
- Contour data received from Underhill (February 2011) UTM NAD 83.
- 25 m Contour intervals Shown.

**STATUS**  
ISSUED FOR REVIEW



**EAGLE GOLD PROJECT  
YUKON TERRITORY**

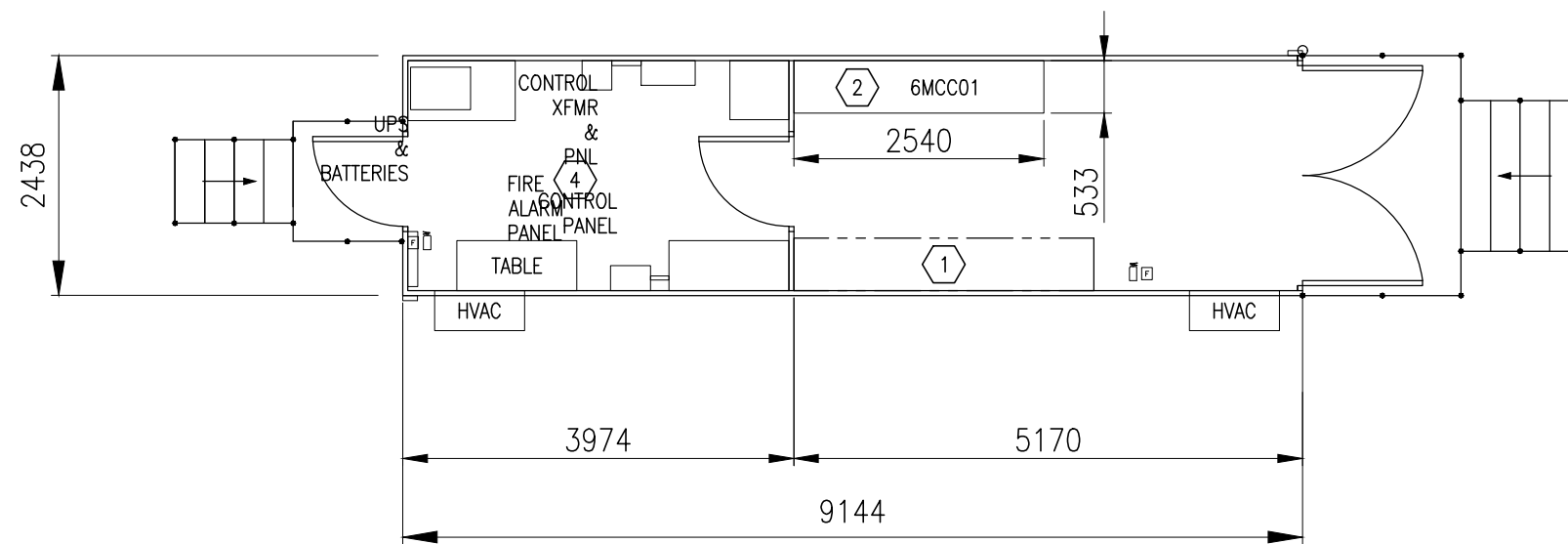
**Power Site Distribution 25 kV Overhead Line**

PROJECTION UTM Zone 8 DATUM NAD 83

FILE NO. V23201707	DWN SF	CKD TG	REV 0
OFFICE EBA-VANC	DATE May 7, 2013		

**10100-18-060**

BILL OF MATERIALS		
ITEM	QTY	DESCRIPTION
①	1	SPACE RESERVED FOR LOW VOLTAGE / CONTROL EQUIPMENT
②	1	LV MCC
③		RESERVED
④	1	INSTRUMENTATION & COMMUNICATION ROOM



- NOTES**
- REFER TO Q2 10 00-TS SITE CONDITIONS & EQUIPMENT STANDARDS FOR SEISMIC AND ENVIRONMENTAL REQUIREMENTS.
  - EQUIPMENT DIMENSIONS PROVIDED ARE APPROXIMATED TO RESERVE SPACE. VERIFY WITH ACTUAL EQUIPMENT DIMENSIONS.
  - PROVIDE ADEQUATE SPACE ABOVE AND AROUND HEAT PRODUCING EQUIPMENT. VERIFY SPACING RECOMMENDATIONS WITH EQUIPMENT MANUFACTURER.
  - HVAC AND OTHER BUILDING SERVICES EQUIPMENT MAY BE INSTALLED IN THE AREA MARKED SPACE RESERVED FOR LOW VOLTAGE/CONTROL EQUIPMENT.
  - PROVIDE DOUBLE DOORS WITH REMOVABLE TRANSOM SIZED TO ALLOW REMOVAL OF LARGEST PIECE OF EQUIPMENT.
  - HVAC SHALL BE PROVIDED WITH FILTERS AND BUILDING SHALL BE PRESSURIZED TO KEEP DUST OUT.

STATUS  
ISSUED FOR REVIEW

CLIENT



EAGLE GOLD PROJECT  
YUKON TERRITORY

Pit E-House & Transformer Yard Layout Mine

PROJECTION

DATUM



FILE NO.  
V23201707

DWN	CKD	REV
SF	TG	0

OFFICE  
EBA-VANC

DATE  
May 7, 2013

11000-18-050

SCALE 1:75

