

BILL OF MATERIALS FOR ONE STRUCTURE					
ITEM	QTY	UNIT	DESCRIPTION	MANUFACTURER	PART NUMBER
1	1	EA	POLE, WOOD (CONFIRM REQUIRED LENGTH AT SITE), TREATED		
2	1	EA	CROSSARM, TREATED TIMBER, 4" x 8" x 10'-0"		
11	1	EA	LINE POST INSULATOR, 69KV, PORCELAIN, CLAMP TOP, VERTICAL MOUNTING		
12	8	EA	SUSPENSION INSULATOR, GLASS, BALL SOCKET TYPE, 146 x 255 MM, 70kN, LEAKAGE DISTANCE 320 MM	SEDIVER	NN070CB146
21	6	M	GROUNDING WIRE, BARE, #6 SOLID		
22	1	PKG	STAPLES, GALVANIZED, 38 x 9.5 MM (50 PER PKG)		
31	1	EA	CLAMP, FOR 69KV LINE POST INSULATOR, ACSR #266.8 (PARTRIDGE)		
32	1	EA	STUD, 3/4", SHORT, FOR 69KV LINE POST INSULATOR		
33	1	EA	BRACKET, POLE TOP, FOR 69KV LINE POST INSULATOR, 5/8" Ø BOLT		
34	1	EA	POLE CAP, RAIN PROTECTIVE ALUMINUM		
35	8	EA	NAILS, COMMON, WIRE, GALVANIZED, 3" LONG		
36	4	EA	MACHINE BOLT, 5/8" Ø x 12" LONG, MIN. THREAD 6", C/W NUT		
37	5	EA	WASHER, CURVED, 3" x 3", FOR 5/8" Ø BOLT		
38	4	EA	NUT, PAL, FOR 5/8" Ø BOLT		
39	2	EA	MACHINE BOLT, 1/2" Ø x 6" LONG, MIN. THREAD 3", C/W NUT		
40	6	EA	WASHER, FLAT, 2" x 2", FOR 1/2" Ø BOLT		
41	4	EA	NUT, PAL, FOR 1/2" Ø BOLT		
42	2	EA	MACHINE BOLT, 1/2" Ø x 10" LONG, MIN. THREAD 4", C/W NUT		
43	1	EA	MACHINE BOLT, 3/4" Ø x 16" LONG, MIN. THREAD 6", C/W NUT		
44	3	EA	WASHER, FLAT, 4" x 5", FOR 3/4" Ø BOLT		
45	1	EA	GAIN, GRID, 3" x 6" FOR 3/4" BOLT, ONE SIDE CURVED, BOTH SPIKED		
46	1	EA	WASHER, CURVED, 4" x 5", FOR 3/4" Ø BOLT		
47	3	EA	NUT, PAL, FOR 3/4" Ø BOLT		
48	1	EA	CROSS ARM BRACE, COMPRESSION ANGLE TYPE, 1525 MM SPACING		
49	2	EA	BOLT, SHOULDER EYE, 3/4" Ø x 10", C/W NUT		
50	2	EA	CLEVIS, BALL, Y-TYPE, 90 LG, 3/4" Ø BOLT, 120kN		
51	2	EA	SOCKET EYE		
52	2	EA	CLAMP, SUSPENSION, UP TO 30°		
53	2	EA	ROD, ARMORED, PREFORMED		

GUY ASSEMBLY FOR ONE STRUCTURE (OPTIONAL)					
ITEM	QTY	UNIT	DESCRIPTION	MANUFACTURER	SPECIFICATION
81	1	EA	GUY HOOK, THIMBLE TYPE, HEAVY DUTY, 230 KN		
82	1	EA	MACHINE BOLT, 7/8" Ø x 16", GRADE 5 MIN. THREAD 6" C/W NUT		
83	1	EA	NUT, PAL, FOR 7/8" Ø BOLT		
84	1	EA	WASHER, CURVED, 5" x 5", FOR 7/8" Ø BOLT		
85	6	EA	GUY GRIP, SIZE 10		
86	AS REQ'D		GUY WIRE, SIZE 10, GRADE 1100		
87	2	EA	GUY STRAIN INSULATOR, GREY		
88	1	LOT	GUY GUARD, POLYETHYLENE TUBING		
89	1	EA	GUY ANCHOR		

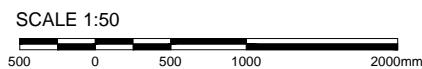
- NOTES
- ALL DIMENSIONS ARE IN MILLIMETERS UNLESS OTHERWISE NOTED.
 - GUY ASSEMBLY IS ONLY REQUIRED FOR LINE ANGLE RANGE FROM 1.5° TO 4° EXCEPT OTHERWISE NOTED.



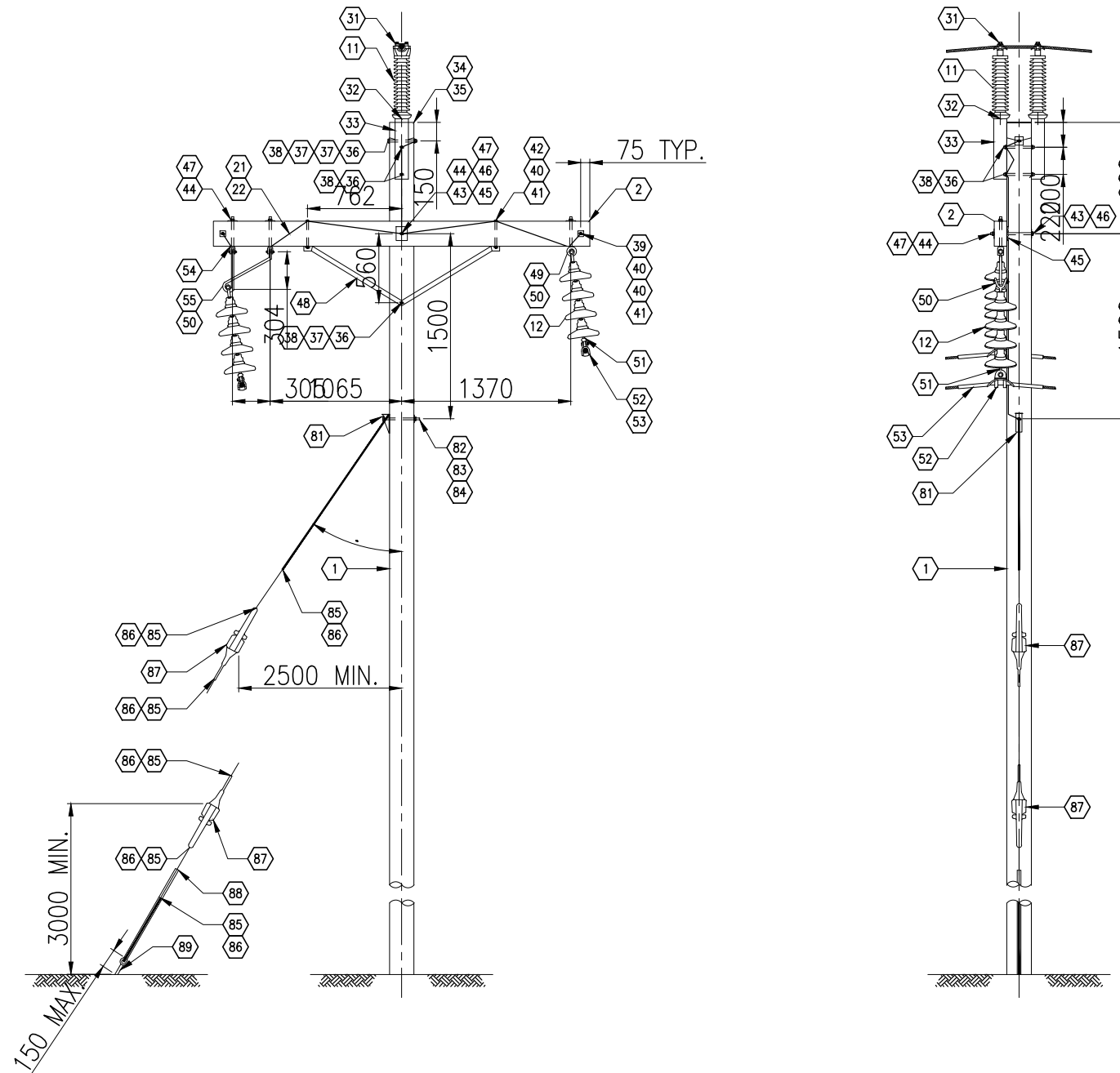
EAGLE GOLD PROJECT
YUKON TERRITORY

69kV Overhead Line Pole Type FSS4 Flat 0° ~4° Semi Suspension Structure

FILE NO. V23201707	DWN SF	CKD TG	REV 0	11080-18-001
OFFICE EBA-VANC	DATE May 7, 2013			



STATUS
ISSUED FOR REVIEW



BILL OF MATERIALS FOR ONE STRUCTURE					
ITEM	QTY	UNIT	DESCRIPTION	MANUFACTURER	SPECIFICATION
1	1	EA	POLE, WOOD (CONFIRM REQUIRED LENGTH AT SITE), TREATED		
2	1	EA	CROSSARM, TREATED TIMBER, 4" X 8" X 10'-0"		
11	2	EA	LINE POST INSULATOR, 69KV, PORCELAIN, CLAMP TOP, VERTICAL MOUNTING		
12	8	EA	SUSPENSION INSULATOR, GLASS, BALL SOCKET TYPE, 146 x 255 MM, 70kN, LEAKAGE DISTANCE 320 MM	SEDIVER	NN070CB146
21	6	M	GROUNDING WIRE, BARE, #6 SOLID		
22	1	PKG	STAPLES, GALVANIZED, 38 x 9.5 MM (50 PER PKG)		
31	2	EA	CLAMP, FOR 69KV LINE POST INSULATOR, ACSR #266.8 (PARTRIDGE)		
32	2	EA	STUD, 3/4", SHORT, FOR 69KV LINE POST INSULATOR		
33	2	EA	BRACKET, POLE TOP, FOR 69KV LINE POST INSULATOR, 5/8" Ø BOLT		
34	1	EA	POLE CAP, RAIN PROTECTIVE ALUMINUM		
35	8	EA	NAILS, COMMON, WIRE, GALVANIZED, 3" LONG		
36	4	EA	MACHINE BOLT, 5/8" Ø x 12" LONG, MIN. THREAD 6", C/W NUT		
37	3	EA	WASHER, CURVED, 3" x 3", FOR 5/8" Ø BOLT		
38	4	EA	NUT, PAL, FOR 5/8" Ø BOLT		
39	2	EA	MACHINE BOLT, 1/2" Ø x 6" LONG, MIN. THREAD 3", C/W NUT		
40	6	EA	WASHER, FLAT, 2" x 2", FOR 1/2" Ø BOLT		
41	4	EA	NUT, PAL, FOR 1/2" Ø BOLT		
42	2	EA	MACHINE BOLT, 1/2" Ø x 10" LONG, MIN. THREAD 4", C/W NUT		
43	1	EA	MACHINE BOLT, 3/4" Ø x 16" LONG, MIN. THREAD 6", C/W NUT		
44	4	EA	WASHER, FLAT, 4" x 5", FOR 3/4" Ø BOLT		
45	1	EA	GAIN, GRID, 3" X 6" FOR 3/4" BOLT, ONE SIDE CURVED, BOTH SPIKED		
46	1	EA	WASHER, CURVED, 4" x 5", FOR 3/4" Ø BOLT		
47	4	EA	NUT, PAL, FOR 3/4" Ø BOLT		
48	1	EA	CROSS ARM BRACE, COMPRESSION ANGLE TYPE, 1525 MM SPACING		
49	1	EA	BOLT, SHOULDER EYE, 3/4" Ø x 10", C/W NUT		
50	2	EA	CLEVIS, BALL, Y-TYPE, 90 LG, 3/4" Ø BOLT, 120kN		
51	2	EA	SOCKET EYE		
52	2	EA	CLAMP, SUSPENSION, UP TO 30'		
53	2	EA	ROD, ARMORED, PREFORMED		
54	2	EA	BOLT, CLEVIS, 3/4" Ø x 10", C/W NUT		
55	1	EA	SWINGING ANGLE BRACKET, Ø 3/4" BAR		

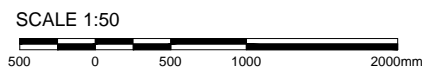
GUY ASSEMBLY FOR ONE STRUCTURE					
ITEM	QTY	UNIT	DESCRIPTION	MANUFACTURER	SPECIFICATION
81	1	EA	GUY HOOK, THIMBLE TYPE, HEAVY DUTY, 230 KN		
82	1	EA	MACHINE BOLT, 7/8" Ø x 16", GRADE 5 MIN. THREAD 6" C/W NUT		
83	1	EA	NUT, PAL, FOR 7/8" Ø BOLT		
84	1	EA	WASHER, CURVED, 5" x 5", FOR 7/8" Ø BOLT		
85	6	EA	GUY GRIP, SIZE 10		
86	AS REQ'D		GUY WIRE, SIZE 10, GRADE 1100		
87	2	EA	GUY STRAIN INSULATOR, GREY		
88	1	LOT	GUY GUARD, POLYETHYLENE TUBING		
89	1	EA	GUY ANCHOR		

NOTES
1. ALL DIMENSIONS ARE IN MILLIMETERS UNLESS OTHERWISE NOTED.



EAGLE GOLD PROJECT
YUKON TERRITORY

69kV Overhead Line Pole Type FSS8 Flat 4° ~8° Semi Suspension Structure



STATUS
ISSUED FOR REVIEW

PROJECTION

DATUM



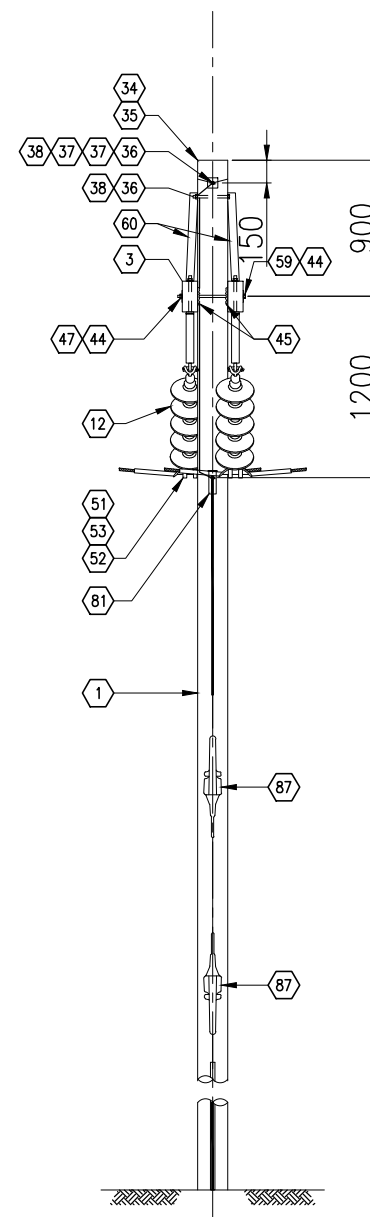
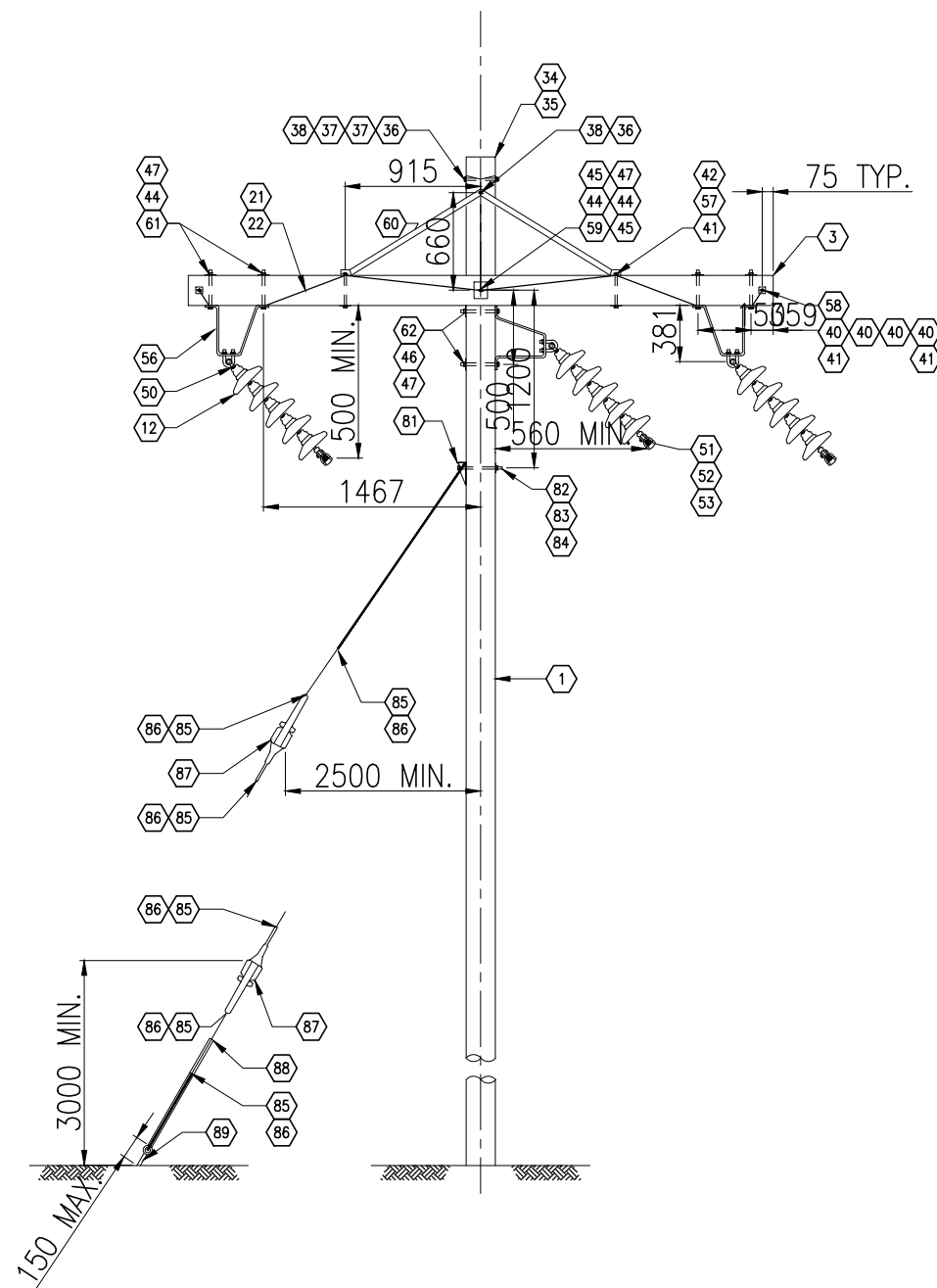
FILE NO.
V23201707

DWN SF
CKD TG
REV 0

OFFICE
EBA-VANC

DATE
May 7, 2013

11080-18-002



BILL OF MATERIALS FOR ONE STRUCTURE					
ITEM	QTY	UNIT	DESCRIPTION	MANUFACTURER	SPECIFICATION
1	1	EA	POLE, WOOD (CONFIRM REQUIRED LENGTH AT SITE), TREATED		
3	2	EA	CROSSARM, TREATED TIMBER, 4" X 8" X 13'-0"		
12	15	EA	SUSPENSION INSULATOR, GLASS, BALL SOCKET TYPE, 146 X 255 MM, 70KN, LEAKAGE DISTANCE 320 MM	SEDVER	NN070CB146
21	6	M	GROUNDING WIRE, BARE, #6 SOLID		
22	1	PKG	STAPLES, GALVANIZED, 38 X 9.5 MM (50 PER PKG)		
34	1	EA	POLE CAP, RAIN PROTECTIVE ALUMINUM		
35	8	EA	NAILS, COMMON, WIRE, GALVANIZED, 3" LONG		
36	2	EA	MACHINE BOLT, 5/8" Ø X 12" LONG, MIN. THREAD 6", C/W NUT		
37	2	EA	WASHER, CURVED, 3" X 3", FOR 5/8" Ø BOLT		
38	2	EA	NUT, PAL, FOR 5/8" Ø BOLT		
40	8	EA	WASHER, FLAT, 2" X 2", FOR 1/2" Ø BOLT		
41	8	EA	NUT, PAL, FOR 1/2" Ø BOLT		
42	4	EA	MACHINE BOLT, 1/2" Ø X 10" LONG, MIN. THREAD 4", C/W NUT		
44	6	EA	WASHER, FLAT, 4" X 5", FOR 3/4" Ø BOLT		
45	2	EA	GAIN, GRID, 3" X 6" FOR 3/4" BOLT, ONE SIDE CURVED, BOTH SPIKED		
46	2	EA	WASHER, CURVED, 4" X 5", FOR 3/4" Ø BOLT		
47	7	EA	NUT, PAL, FOR 3/4" Ø BOLT		
50	3	EA	CLEVIS, BALL, Y-TYPE, 90 LG, 3/4" Ø BOLT, 120KN		
51	3	EA	SOCKET EYE		
52	3	EA	CLAMP, SUSPENSION, UP TO 30'		
53	3	EA	ROD, ARMORED, PREFORMED		
56	3	EA	BRACKET, CORNER		
57	4	EA	WASHER, FLAT, 4" X 5", FOR 1/2" Ø BOLT		
58	2	EA	BOLT, DOUBLE ARMING, 1/2" Ø X 22" LONG, C/W 4 NUTS		
59	1	EA	MACHINE BOLT, 3/4" Ø X 22" LONG, MIN. THREAD 6", C/W NUT		
60	2	EA	CROSS ARM BRACE, COMPRESSION ANGLE TYPE, 1830 MM SPACING		
61	4	EA	MACHINE BOLT, 3/4" Ø X 10" LONG, MIN. THREAD 4", C/W NUT		
62	2	EA	MACHINE BOLT, 3/4" Ø X 12" LONG, MIN. THREAD 6", C/W NUT		

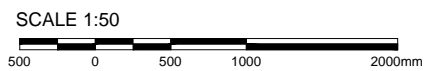
GUY ASSEMBLY FOR ONE STRUCTURE					
ITEM	QTY	UNIT	DESCRIPTION	MANUFACTURER	SPECIFICATION
81	1	EA	GUY HOOK, THIMBLE TYPE, HEAVY DUTY, 230 KN		
82	1	EA	MACHINE BOLT, 7/8" Ø X 16", GRADE 5 MIN. THREAD 6" C/W NUT		
83	1	EA	NUT, PAL, FOR 7/8" Ø BOLT		
84	1	EA	WASHER, CURVED, 5" X 5", FOR 7/8" Ø BOLT		
85	6	EA	GUY GRIP, SIZE 10		
86	AS REQ'D		GUY WIRE, SIZE 10, GRADE 1100		
87	2	EA	GUY STRAIN INSULATOR, GREY		
88	1	LOT	GUY GUARD, POLYETHYLENE TUBING		
89	1	EA	GUY ANCHOR		

NOTES
1. ALL DIMENSIONS ARE IN MILLIMETERS UNLESS OTHERWISE NOTED.



EAGLE GOLD PROJECT
YUKON TERRITORY

69kV Overhead Line Pole Type FS15 Flat 8° ~15°
Suspension Structure

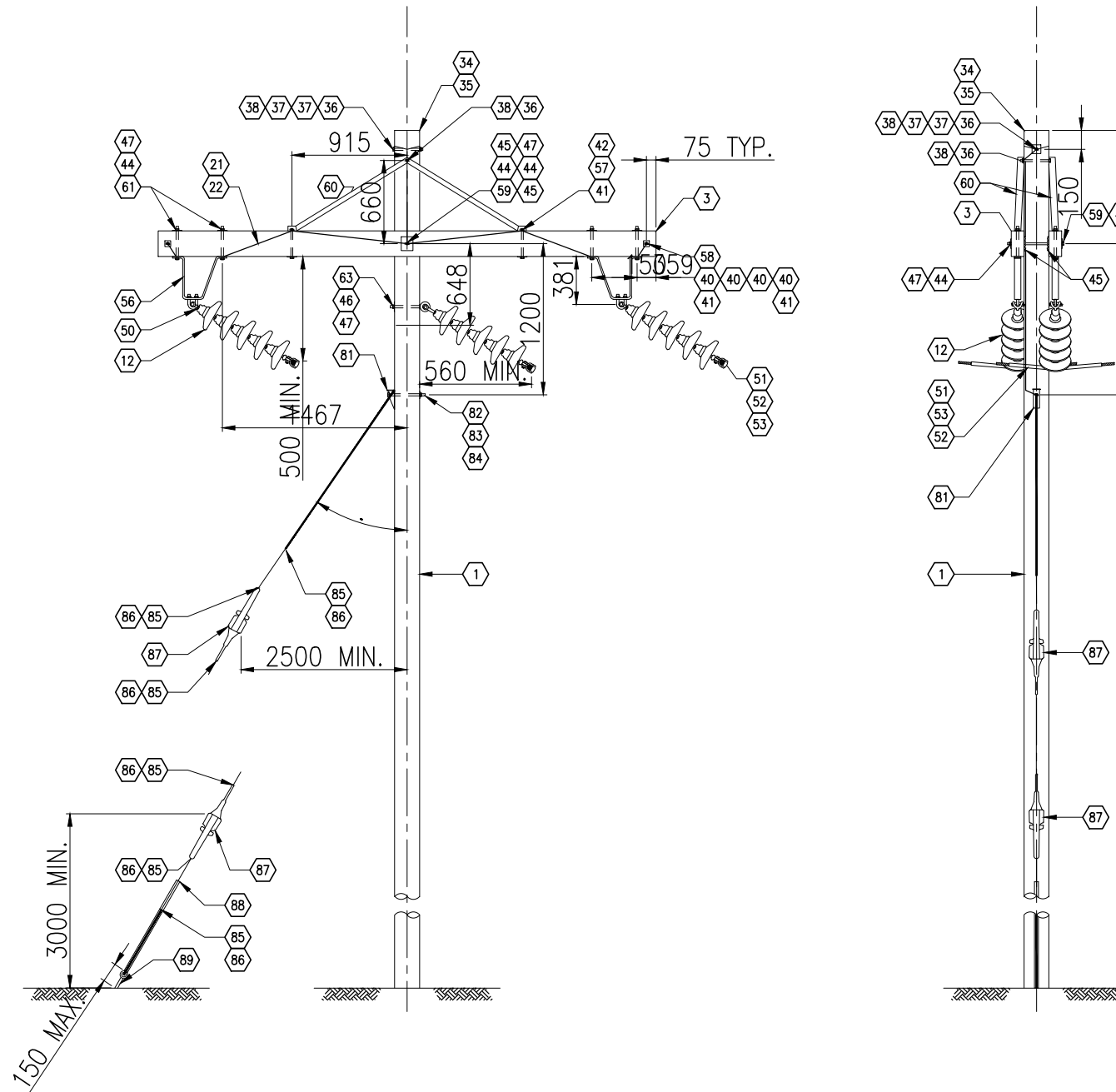


STATUS
ISSUED FOR REVIEW



PROJECTION	DATUM	FILE NO.	DWN	CKD	REV
		V23201707	SF	TG	0
OFFICE	DATE				
EBA-VANC	May 7, 2013				

11080-18-003



BILL OF MATERIALS FOR ONE STRUCTURE					
ITEM	QTY	UNIT	DESCRIPTION	MANUFACTURER	SPECIFICATION
1	1	EA	POLE, WOOD (CONFIRM REQUIRED LENGTH AT SITE), TREATED		
3	2	EA	CROSSARM, TREATED TIMBER, 4" X 8" X 13'-0"		
12	15	EA	SUSPENSION INSULATOR, GLASS, BALL SOCKET TYPE, 146 x 255 MM, 70kN, LEAKAGE DISTANCE 320 MM	SEDIVER	NN070CB146
21	6	M	GROUNDING WIRE, BARE, #6 SOLID		
22	1	PKG	STAPLES, GALVANIZED, 38 x 9.5 MM (50 PER PKG)		
34	1	EA	POLE CAP, RAIN PROTECTIVE ALUMINUM		
35	8	EA	NAILS, COMMON, WIRE, GALVANIZED, 3" LONG		
36	2	EA	MACHINE BOLT, 5/8" Ø x 12" LONG, MIN. THREAD 6", C/W NUT		
37	2	EA	WASHER, CURVED, 3" x 3", FOR 5/8" Ø BOLT		
38	2	EA	NUT, PAL., FOR 5/8" Ø BOLT		
40	8	EA	WASHER, FLAT, 2" x 2", FOR 1/2" Ø BOLT		
41	8	EA	NUT, PAL., FOR 1/2" Ø BOLT		
42	4	EA	MACHINE BOLT, 1/2" Ø x 10" LONG, MIN. THREAD 4", C/W NUT		
44	6	EA	WASHER, FLAT, 4" x 5", FOR 3/4" Ø BOLT		
45	2	EA	GAIN, GRID, 3" X 6" FOR 3/4" BOLT, ONE SIDE CURVED, BOTH SPIKED		
46	1	EA	WASHER, CURVED, 4" x 5", FOR 3/4" Ø BOLT		
47	6	EA	NUT, PAL., FOR 3/4" Ø BOLT		
50	3	EA	CLEVIS, BALL, Y-TYPE, 90 LG, 3/4" Ø BOLT, 120kN		
51	3	EA	SOCKET EYE		
52	3	EA	CLAMP, SUSPENSION, UP TO 30°		
53	3	EA	ROD, ARMORED, PREFORMED		
56	2	EA	BRACKET, CORNER		
57	4	EA	WASHER, FLAT, 4" x 5", FOR 1/2" Ø BOLT		
58	2	EA	BOLT, DOUBLE ARMING, 1/2" Ø x 22" LONG, C/W 4 NUTS		
59	1	EA	MACHINE BOLT, 3/4" Ø x 22" LONG, MIN. THREAD 6", C/W NUT		
60	2	EA	CROSS ARM BRACE, COMPRESSION ANGLE TYPE, 1830 MM SPACING		
61	4	EA	MACHINE BOLT, 3/4" Ø x 10" LONG, MIN. THREAD 4", C/W NUT		
63	1	EA	BOLT, SHOULDER EYE, 3/4" Ø x 12", C/W NUT		

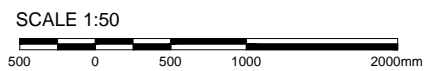
GUY ASSEMBLY FOR ONE STRUCTURE					
ITEM	QTY	UNIT	DESCRIPTION	MANUFACTURER	SPECIFICATION
81	1	EA	GUY HOOK, THIMBLE TYPE, HEAVY DUTY, 230 KN		
82	1	EA	MACHINE BOLT, 7/8" Ø x 16", GRADE 5 MIN. THREAD 6" C/W NUT		
83	1	EA	NUT, PAL., FOR 7/8" Ø BOLT		
84	1	EA	WASHER, CURVED, 5" x 5", FOR 7/8" Ø BOLT		
85	6	EA	GUY GRIP, SIZE 10		
86	AS REQ'D		GUY WIRE, SIZE 10, GRADE 1100		
87	2	EA	GUY STRAIN INSULATOR, GREY		
88	1	LOT	GUY GUARD, POLYETHYLENE TUBING		
89	1	EA	GUY ANCHOR		

NOTES
1. ALL DIMENSIONS ARE IN MILLIMETERS UNLESS OTHERWISE NOTED.



EAGLE GOLD PROJECT
YUKON TERRITORY

69kV Overhead Line Pole Type FS20 Flat 15° ~20°
Suspension Structure

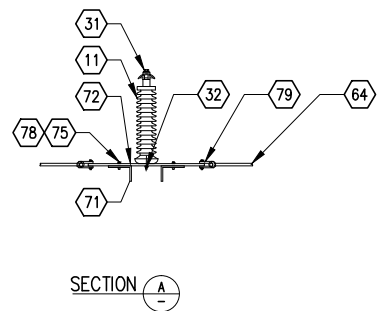
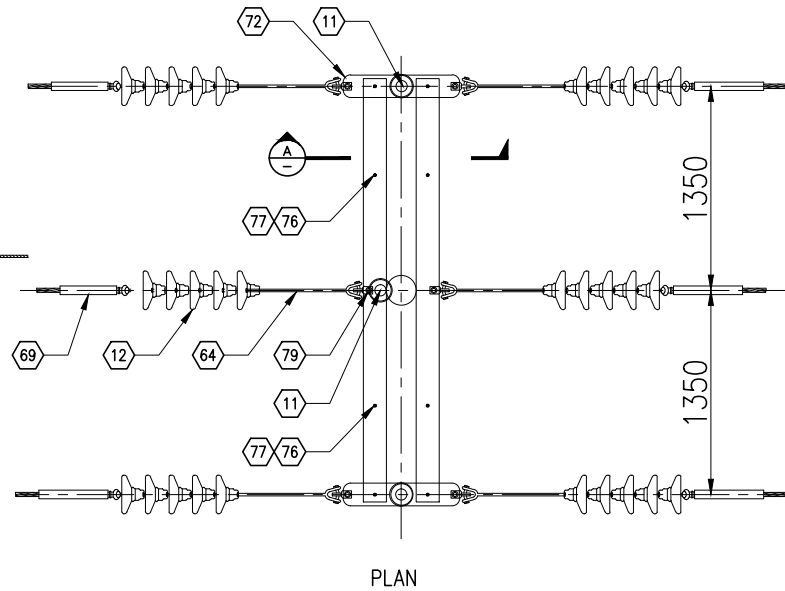
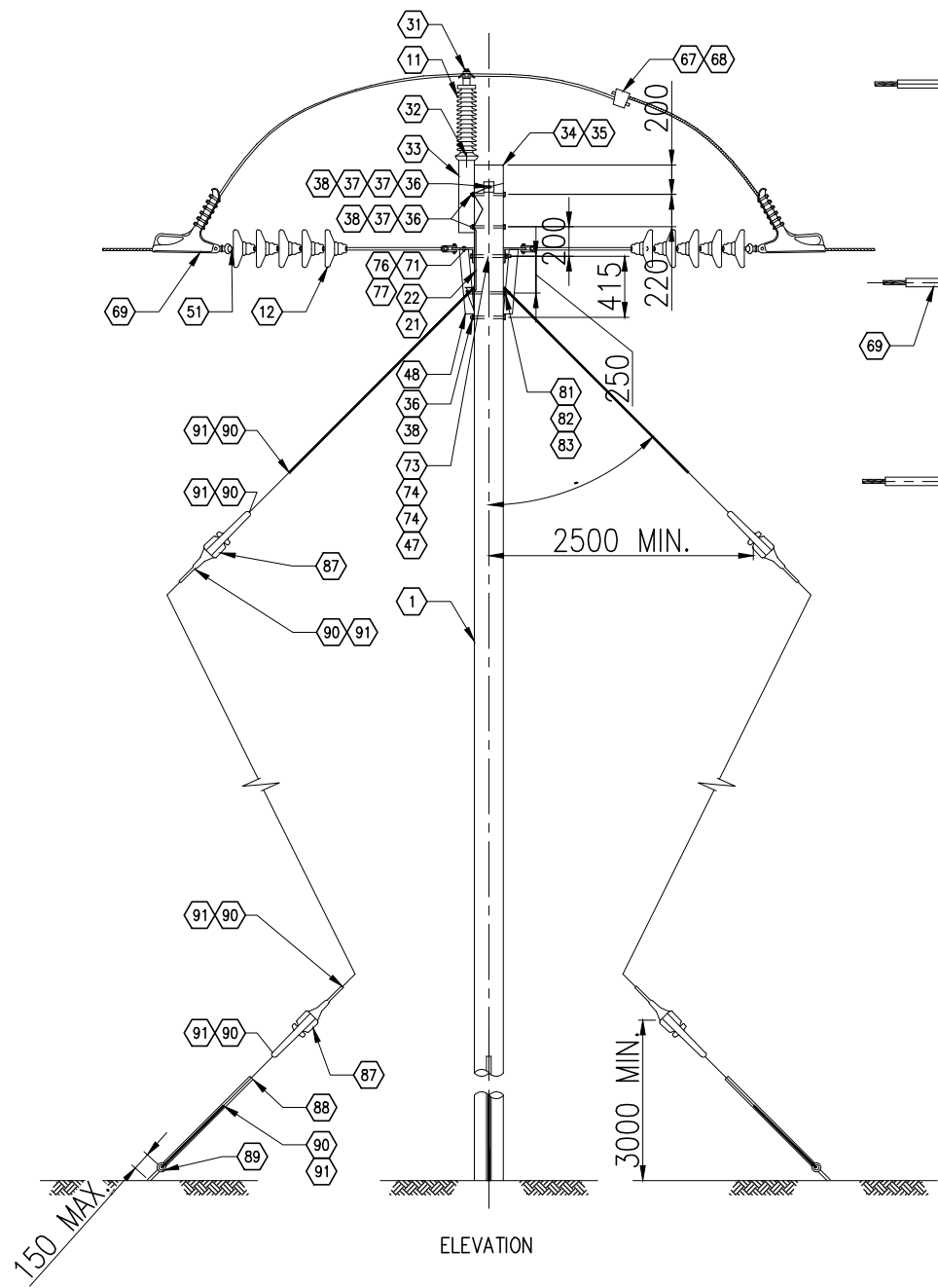


STATUS
ISSUED FOR REVIEW



PROJECTION	DATUM	FILE NO.	DWN	CKD	REV
		V23201707	SF	TG	0
OFFICE	DATE				
EBA-VANC	May 7, 2013				

Figure 1



BILL OF MATERIALS FOR ONE STRUCTURE					
ITEM	QTY	UNIT	DESCRIPTION	MANUFACTURER	SPECIFICATION
1	1	EA	POLE, WOOD (CONFIRM REQUIRED LENGTH AT SITE), TREATED		
11	3	EA	LINE POST INSULATOR, 69kV, PORCELAIN, CLAMP TOP, VERTICAL MOUNTING		
12	30	EA	SUSPENSION INSULATOR, GLASS, BALL SOCKET TYPE, 146 x 255 MM, 70kN, LEAKAGE DISTANCE 320 MM	SEDIWER	NN070CB146
21	6	M	GROUNDING WIRE, BARE, #6 SOLID		
22	1	PKG	STAPLES, GALVANIZED, 38 x 9.5 MM (50 PER PKG)		
31	3	EA	CLAMP, FOR 69kV LINE POST INSULATOR, ACSR #266.8 (PARTRIDGE)		
32	3	EA	STUD, 3/4", SHORT, FOR 69kV LINE POST INSULATOR		
33	1	EA	BRACKET, POLE TOP, FOR 69kV LINE POST INSULATOR, 5/8" Ø BOLT		
34	1	EA	POLE CAP, RAIN PROTECTIVE ALUMINUM		
35	8	EA	NAILS, COMMON, WIRE, GALVANIZED, 3" LONG		
36	4	EA	MACHINE BOLT, 5/8" Ø x 12" LONG, MIN. THREAD 6", C/W NUT		
37	4	EA	WASHER, CURVED, 3" x 3", FOR 5/8" Ø BOLT		
38	4	EA	NUT, PAL, FOR 5/8" Ø BOLT		
47	1	EA	NUT, PAL, FOR 3/4" Ø BOLT		
48	2	EA	BRACE, CROSSARM, COMPRESSION ANGLE, 1525 SPACING		
51	6	EA	SOCKET EYE		
64	6	EA	CLEVIS, BALL, Y-TYPE, 685 LG, 3/4" Ø BOLT, 120kN		
67	3	EA	SPLICE, AMPACT		
68	3	EA	CARTRIDGE, AMPACT		
69	6	EA	CLAMP, STRAIN, ASSEMBLY		
71	2	EA	CROSSARM, ANGLE, STEEL 6" x 4" x 3/8" x 2800 LG HT		
72	2	EA	PLATE, STRAIN, 150 x 5/8" x 770 LG		
73	1	EA	BOLT, MACHINE, 3/4" Ø x 14", MIN. THREAD 6", C/W NUT		
74	2	EA	GAIN, GRID, 4" x 6" FOR 3/4" Ø BOLT, SPIKED CURVED SIDE		
75	4	EA	BOLT, MACHINE, 3/4" Ø x 2 1/2", C/W NUT		
76	4	EA	BOLT, MACHINE, 1/2" Ø x 1 1/2", C/W NUT		
77	4	EA	WASHER, HELICAL SPRING, FOR 1/2" Ø BOLT		
78	4	EA	WASHER, HELICAL SPRING, FOR 3/4" Ø BOLT		
79	6	EA	SHACKLE, ANCHOR, 19 Ø, 27 OPEN, 102 LG, 3/4" Ø BOLT, 160 kN		

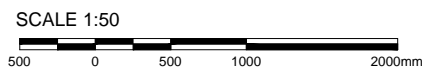
GUY ASSEMBLY FOR ONE STRUCTURE					
ITEM	QTY	UNIT	DESCRIPTION	MANUFACTURER	SPECIFICATION
81	2	EA	GUY HOOK, THIMBLE TYPE, HEAVY DUTY, 230 kN		
82	1	EA	MACHINE BOLT, 7/8" Ø x 16", GRADE 5 MIN. THREAD 6" C/W NUT		
83	1	EA	NUT, PAL, FOR 7/8" Ø BOLT		
87	4	EA	GUY STRAIN INSULATOR, GREY		
88	2	LOT	GUY GUARD, POLYETHYLENE TUBING		
89	2	EA	GUY ANCHOR		
90	12	EA	GUY GRIP, SIZE 12		
91	AS REQ'D		GUY WIRE, SIZE 12, GRADE 1300		

NOTES
1. ALL DIMENSIONS ARE IN MILLIMETERS UNLESS OTHERWISE NOTED.



EAGLE GOLD PROJECT
YUKON TERRITORY

69kV Overhead Line Pole Type FD45 Flat 0° ~45°
Dead End Structure

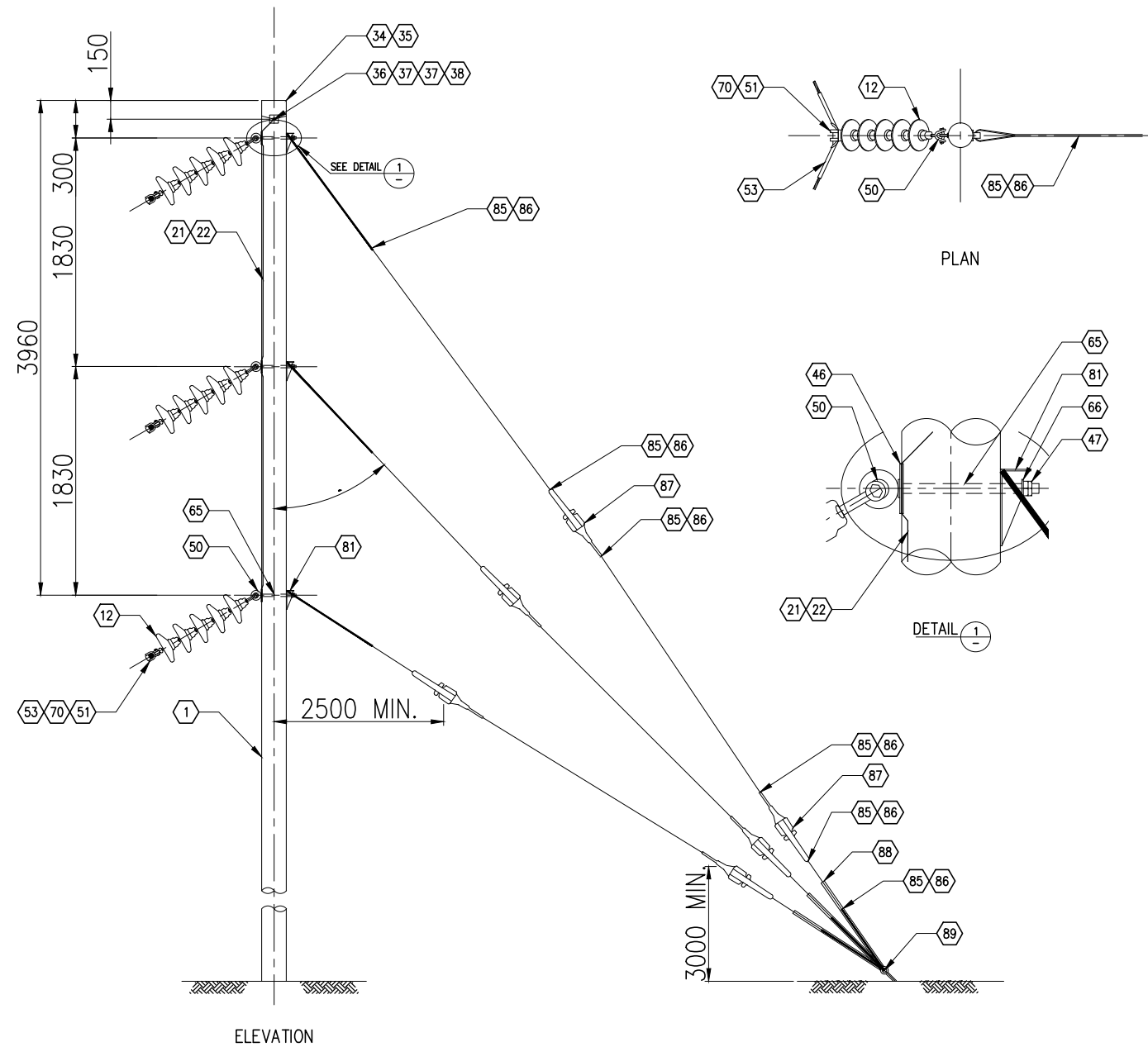


STATUS
ISSUED FOR REVIEW



PROJECTION	DATUM	FILE NO. V23201707	DWN SF	CKD TG	REV 0
OFFICE EBA-VANC		DATE May 7, 2013			

11080-18-005



BILL OF MATERIALS FOR ONE STRUCTURE					
ITEM	QTY	UNIT	DESCRIPTION	MANUFACTURER	SPECIFICATION
1	1	EA	POLE, WOOD (CONFIRM REQUIRED LENGTH AT SITE), TREATED		
12	15	EA	SUSPENSION INSULATOR, GLASS, BALL SOCKET TYPE, 146 x 255 MM, 70kN, LEAKAGE DISTANCE 320 MM	SEDIVER	NN070CB146
21	6	M	GROUNDING WIRE, BARE, #6 SOLID		
22	1	PKG	STAPLES, GALVANIZED, 38 x 9.5 MM (50 PER PKG)		
34	1	EA	POLE CAP, RAIN PROTECTIVE ALUMINUM		
35	8	EA	NAILS, COMMON, WIRE, GALVANIZED, 3" LONG		
36	1	EA	MACHINE BOLT, 5/8" ϕ x 12" LONG, MIN. THREAD 6", C/W NUT		
37	2	EA	WASHER, CURVED, 3" x 3", FOR 5/8" ϕ BOLT		
38	1	EA	NUT, PAL, FOR 5/8" ϕ BOLT		
46	3	EA	WASHER, CURVED, 4" x 5", FOR 3/4" ϕ BOLT		
47	3	EA	NUT, PAL, FOR 3/4" ϕ BOLT		
50	3	EA	CLEVIS, BALL, Y-TYPE, 90 LG, 3/4" ϕ BOLT, 120kN		
51	3	EA	SOCKET EYE		
53	3	EA	ROD, ARMORED, PREFORMED		
65	3	EA	BOLT, SHOULDER EYE, 3/4" ϕ x 16", C/W NUT		
66	3	EA	WASHER, 2" O.D., FLAT, FOR 3/4" ϕ BOLT		
70	3	EA	CLAMP, SUSPENSION, UP TO 60°		

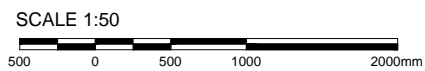
GUY ASSEMBLY FOR ONE STRUCTURE					
ITEM	QTY	UNIT	DESCRIPTION	MANUFACTURER	SPECIFICATION
81	3	EA	GUY HOOK, THIMBLE TYPE, HEAVY DUTY, 230 KN		
85	18	EA	GUY GRIP, SIZE 10		
86	AS REQ'D		GUY WIRE, SIZE 10, GRADE 1100		
87	6	EA	GUY STRAIN INSULATOR, GREY		
88	3	LOT	GUY GUARD, POLYETHYLENE TUBING		
89	1	EA	GUY ANCHOR		

NOTES
1. ALL DIMENSIONS ARE IN MILLIMETERS UNLESS OTHERWISE NOTED.



EAGLE GOLD PROJECT
YUKON TERRITORY

69kV Overhead Line Pole Type 60 Vertical 15° ~70°
Medium Angle Structure

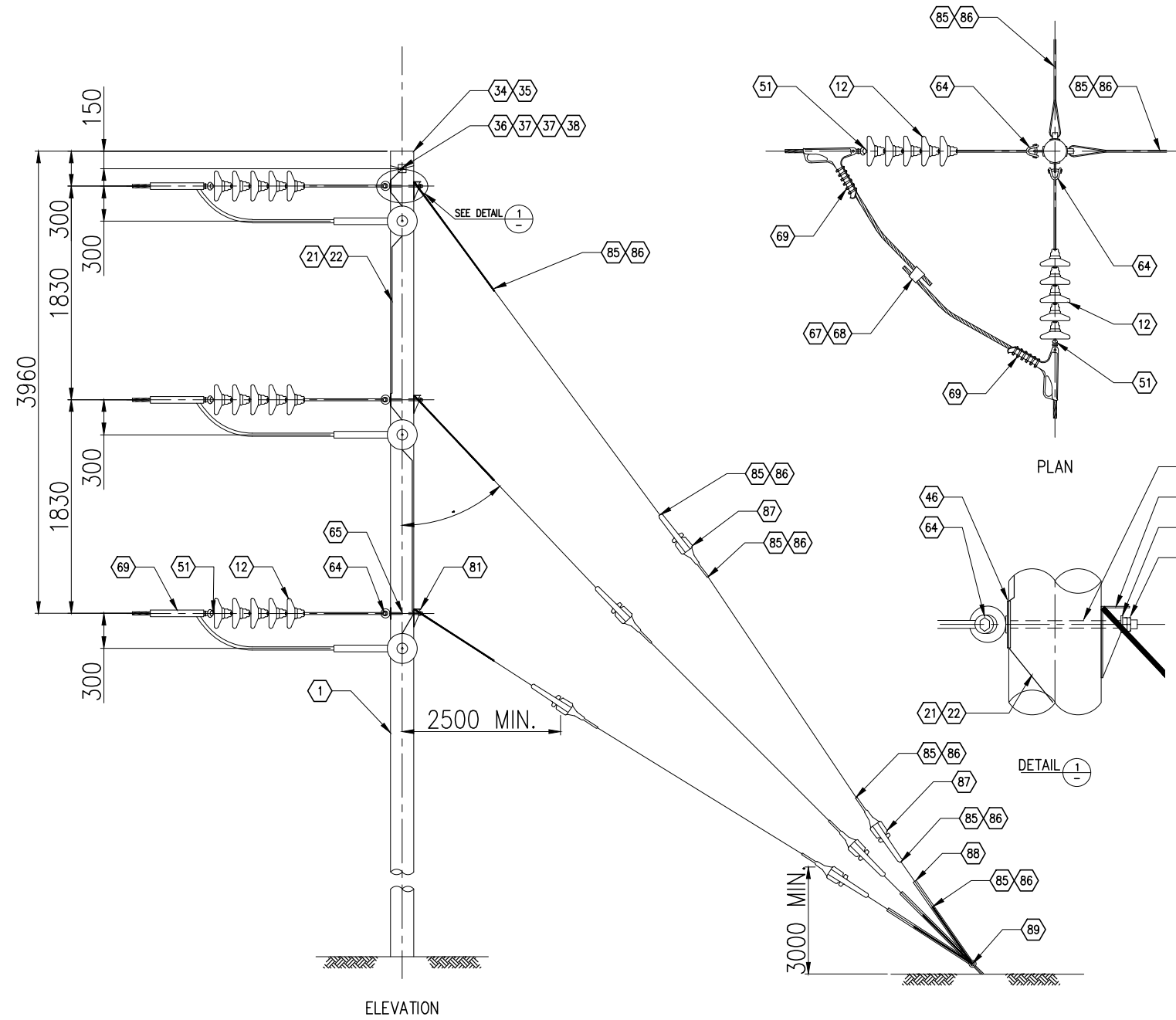


STATUS
ISSUED FOR REVIEW



FILE NO. V23201707	DWN SF	CKD TG	REV 0
OFFICE EBA-VANC	DATE May 7, 2013		

11080-18-006



BILL OF MATERIALS FOR ONE STRUCTURE					
ITEM	QTY	UNIT	DESCRIPTION	MANUFACTURER	SPECIFICATION
1	1	EA	POLE, WOOD (CONFIRM REQUIRED LENGTH AT SITE), TREATED		
12	30	EA	SUSPENSION INSULATOR, GLASS, BALL SOCKET TYPE, 146 x 255 MM, 70kN, LEAKAGE DISTANCE 320 MM	SEDIVER	NN070CB146
21	6	M	GROUNDING WIRE, BARE, #6 SOLID		
22	1	PKG	STAPLES, GALVANIZED, 38 x 9.5 MM (50 PER PKG)		
34	1	EA	POLE CAP, RAIN PROTECTIVE ALUMINUM		
35	8	EA	NAILS, COMMON, WIRE, GALVANIZED, 3" LONG		
36	1	EA	MACHINE BOLT, 5/8" Ø x 12" LONG, MIN. THREAD 6", C/W NUT		
37	2	EA	WASHER, CURVED, 3" x 3", FOR 5/8" Ø BOLT		
38	1	EA	NUT, PAL, FOR 5/8" Ø BOLT		
46	3	EA	WASHER, CURVED, 4" x 5", FOR 3/4" Ø BOLT		
47	3	EA	NUT, PAL, FOR 3/4" Ø BOLT		
51	6	EA	SOCKET EYE		
64	6	EA	CLEVIS, BALL, Y-TYPE, 685 LG, 3/4" Ø BOLT, 120kN		
65	3	EA	BOLT, SHOULDER EYE, 3/4" Ø x 16", C/W NUT		
66	3	EA	WASHER, 2" O.D., FLAT, FOR 3/4" Ø BOLT		
67	3	EA	SPLICE, AMPACT		
68	3	EA	CARTRIDGE, AMPACT		
69	6	EA	CLAMP, STRAIN, ASSEMBLY		

GUY ASSEMBLY FOR ONE STRUCTURE					
ITEM	QTY	UNIT	DESCRIPTION	MANUFACTURER	SPECIFICATION
81	6	EA	GUY HOOK, THIMBLE TYPE, HEAVY DUTY, 230 kN		
85	36	EA	GUY GRIP, SIZE 10		
86	AS REQ'D		GUY WIRE, SIZE 10, GRADE 1100		
87	12	EA	GUY STRAIN INSULATOR, GREY		
88	6	LOT	GUY GUARD, POLYETHYLENE TUBING		
89	2	EA	GUY ANCHOR		

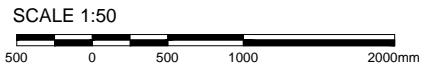
NOTES
 1. ALL DIMENSIONS ARE IN MILLIMETERS UNLESS OTHERWISE NOTED.



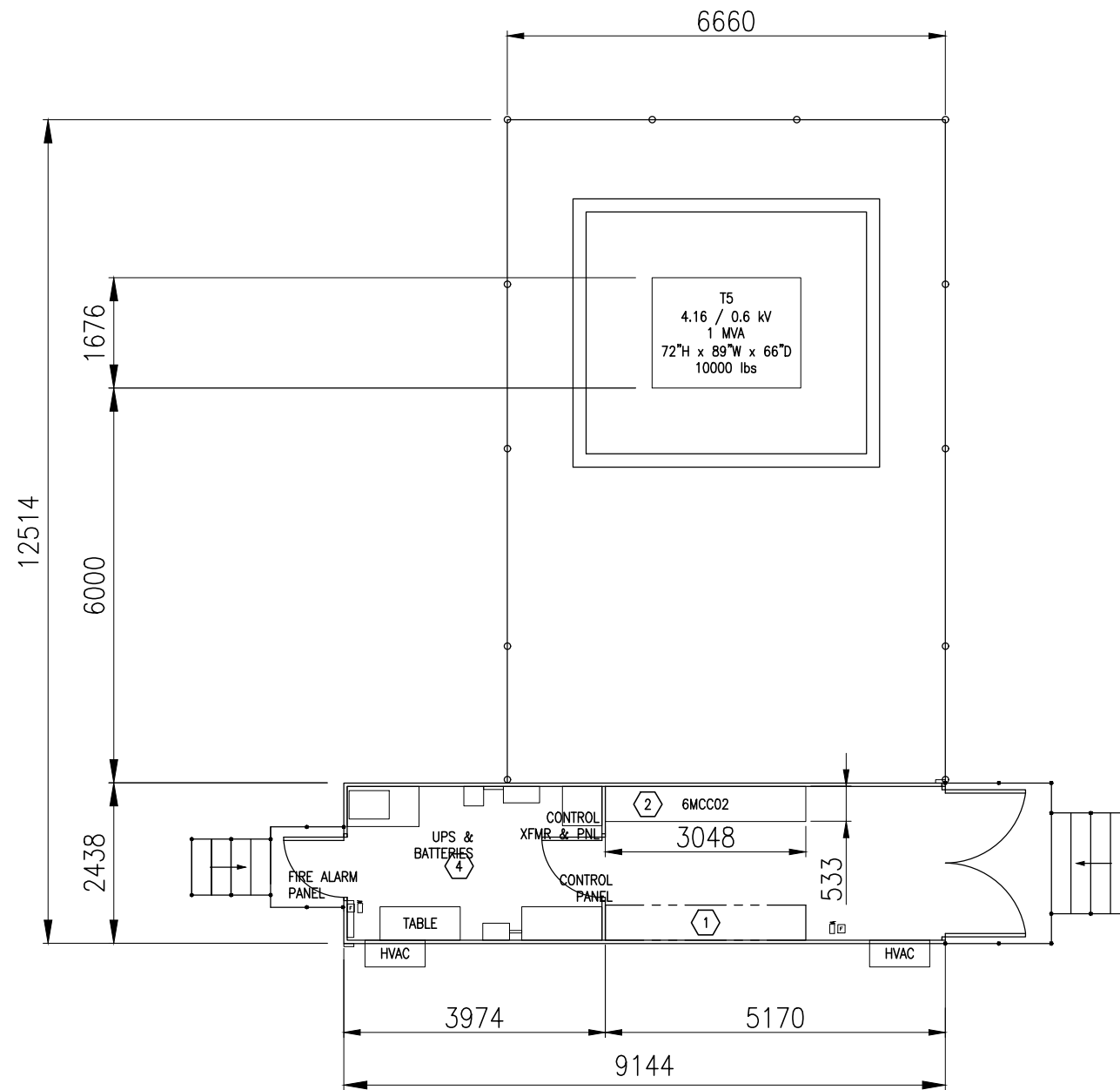
CLIENT
EAGLE GOLD PROJECT
YUKON TERRITORY
 69kV Overhead Line Pole Type VD90 Vertical 45° ~90°
 Dead End Structure



PROJECTION	DATUM	FILE NO.	DWN	CKD	REV
		V23201707	SF	TG	0
OFFICE		DATE		11080-18-007	
EBA-VANC		May 7, 2013			



STATUS
 ISSUED FOR REVIEW



BILL OF MATERIALS		
ITEM	QTY	DESCRIPTION
①	1	SPACE RESERVED FOR LOW VOLTAGE / CONTROL EQUIPMENT
②	1	LV MCC
③		RESERVED
④	1	INSTRUMENTATION & COMMUNICATION ROOM

NOTES

- REFER TO 02 10 00-TS SITE CONDITIONS & EQUIPMENT STANDARDS FOR SEISMIC AND ENVIRONMENTAL REQUIREMENTS.
- EQUIPMENT DIMENSIONS PROVIDED ARE APPROXIMATED TO RESERVE SPACE. VERIFY WITH ACTUAL EQUIPMENT DIMENSIONS.
- PROVIDE ADEQUATE SPACE ABOVE AND AROUND HEAT PRODUCING EQUIPMENT. VERIFY SPACING RECOMMENDATIONS WITH EQUIPMENT MANUFACTURER.
- HVAC AND OTHER BUILDING SERVICES EQUIPMENT MAY BE INSTALLED IN THE AREA MARKED SPACE RESERVED FOR LOW VOLTAGE/CONTROL EQUIPMENT.
- PROVIDE DOUBLE DOORS WITH REMOVABLE TRANSOM SIZED TO ALLOW REMOVAL OF LARGEST PIECE OF EQUIPMENT.
- HVAC SHALL BE PROVIDED WITH FILTERS AND BUILDING SHALL BE PRESSURIZED TO KEEP DUST OUT.

STATUS
ISSUED FOR REVIEW

CLIENT



EAGLE GOLD PROJECT
YUKON TERRITORY

Primary Crushing E-House &
Transformer Yard Layout Mine

PROJECTION

DATUM



FILE NO.
V23201707

DWN	CKD	REV
SF	TG	0

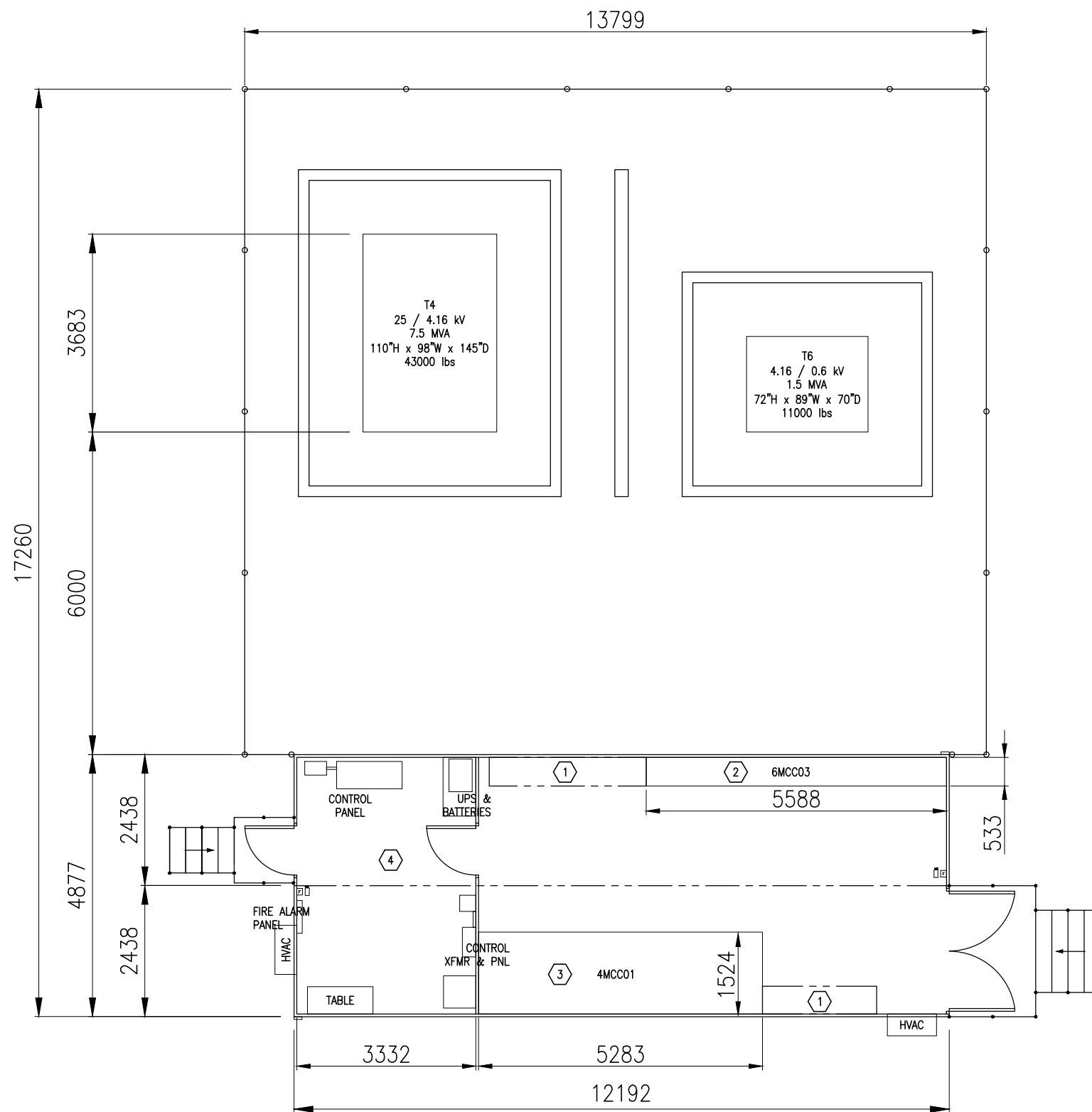
OFFICE
EBA-VANC

DATE
May 7, 2013

13120-18-050

SCALE 1:100





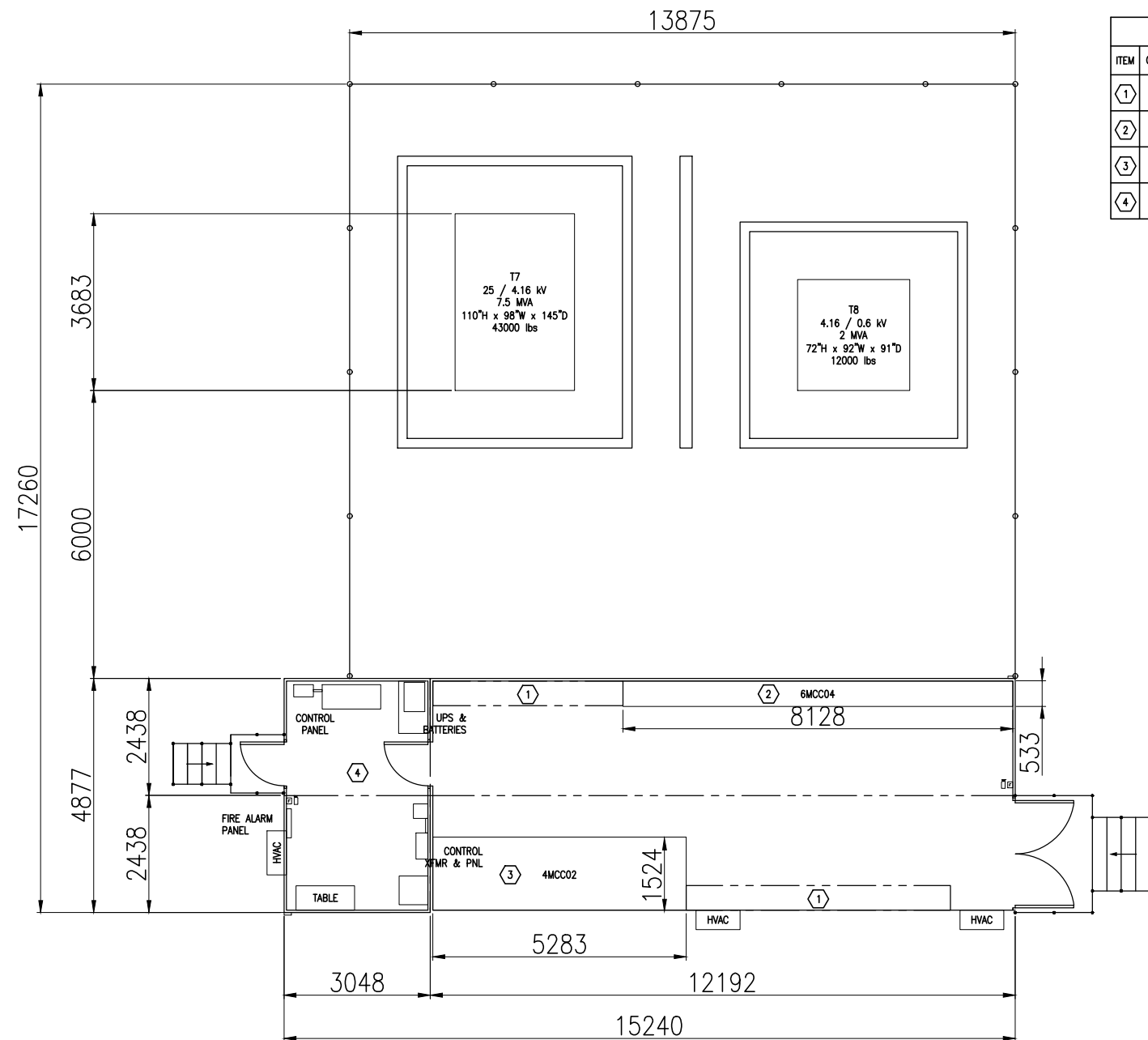
BILL OF MATERIALS		
ITEM	QTY	DESCRIPTION
①	2	SPACE RESERVED FOR LOW VOLTAGE / CONTROL EQUIPMENT
②	1	LV MCC
③	1	MV MCC
④	1	INSTRUMENTATION & COMMUNICATION ROOM

- NOTES**
- REFER TO 02 10 00-TS SITE CONDITIONS & EQUIPMENT STANDARDS FOR SEISMIC AND ENVIRONMENTAL REQUIREMENTS.
 - EQUIPMENT DIMENSIONS PROVIDED ARE APPROXIMATED TO RESERVE SPACE. VERIFY WITH ACTUAL EQUIPMENT DIMENSIONS.
 - PROVIDE ADEQUATE SPACE ABOVE AND AROUND HEAT PRODUCING EQUIPMENT. VERIFY SPACING RECOMMENDATIONS WITH EQUIPMENT MANUFACTURER.
 - HVAC AND OTHER BUILDING SERVICES EQUIPMENT MAY BE INSTALLED IN THE AREA MARKED SPACE RESERVED FOR LOW VOLTAGE/CONTROL EQUIPMENT.
 - PROVIDE DOUBLE DOORS WITH REMOVABLE TRANSOM SIZED TO ALLOW REMOVAL OF LARGEST PIECE OF EQUIPMENT.
 - HVAC SHALL BE PROVIDED WITH FILTERS AND BUILDING SHALL BE PRESSURIZED TO KEEP DUST OUT.

STATUS
ISSUED FOR REVIEW



		EAGLE GOLD PROJECT YUKON TERRITORY			
		Secondary Crushing E-House & Transformer Yard Layout Mine			
PROJECTION	DATUM	FILE NO. V23201707	DWN SF	CKD TG	REV 0
		OFFICE EBA-VANC	DATE May 7, 2013		13220-18-050



BILL OF MATERIALS		
ITEM	QTY	DESCRIPTION
①	2	SPACE RESERVED FOR LOW VOLTAGE / CONTROL EQUIPMENT
②	1	LV MCC
③	1	MV MCC
④	1	INSTRUMENTATION & COMMUNICATION ROOM

NOTES

- REFER TO 02 10 00-TS SITE CONDITIONS & EQUIPMENT STANDARDS FOR SEISMIC AND ENVIRONMENTAL REQUIREMENTS.
- EQUIPMENT DIMENSIONS PROVIDED ARE APPROXIMATED TO RESERVE SPACE. VERIFY WITH ACTUAL EQUIPMENT DIMENSIONS.
- PROVIDE ADEQUATE SPACE ABOVE AND AROUND HEAT PRODUCING EQUIPMENT. VERIFY SPACING RECOMMENDATIONS WITH EQUIPMENT MANUFACTURER.
- HVAC AND OTHER BUILDING SERVICES EQUIPMENT MAY BE INSTALLED IN THE AREA MARKED SPACE RESERVED FOR LOW VOLTAGE/CONTROL EQUIPMENT.
- PROVIDE DOUBLE DOORS WITH REMOVABLE TRANSOM SIZED TO ALLOW REMOVAL OF LARGEST PIECE OF EQUIPMENT.
- HVAC SHALL BE PROVIDED WITH FILTERS AND BUILDING SHALL BE PRESSURIZED TO KEEP DUST OUT.

STATUS
ISSUED FOR REVIEW

CLIENT



PROJECTION

DATUM



EAGLE GOLD PROJECT
YUKON TERRITORY

Tertiary Crushing E-House &
Transformer Yard Layout Mine

FILE NO.
V23201707

DWN
SF

CKD
TG

REV
0

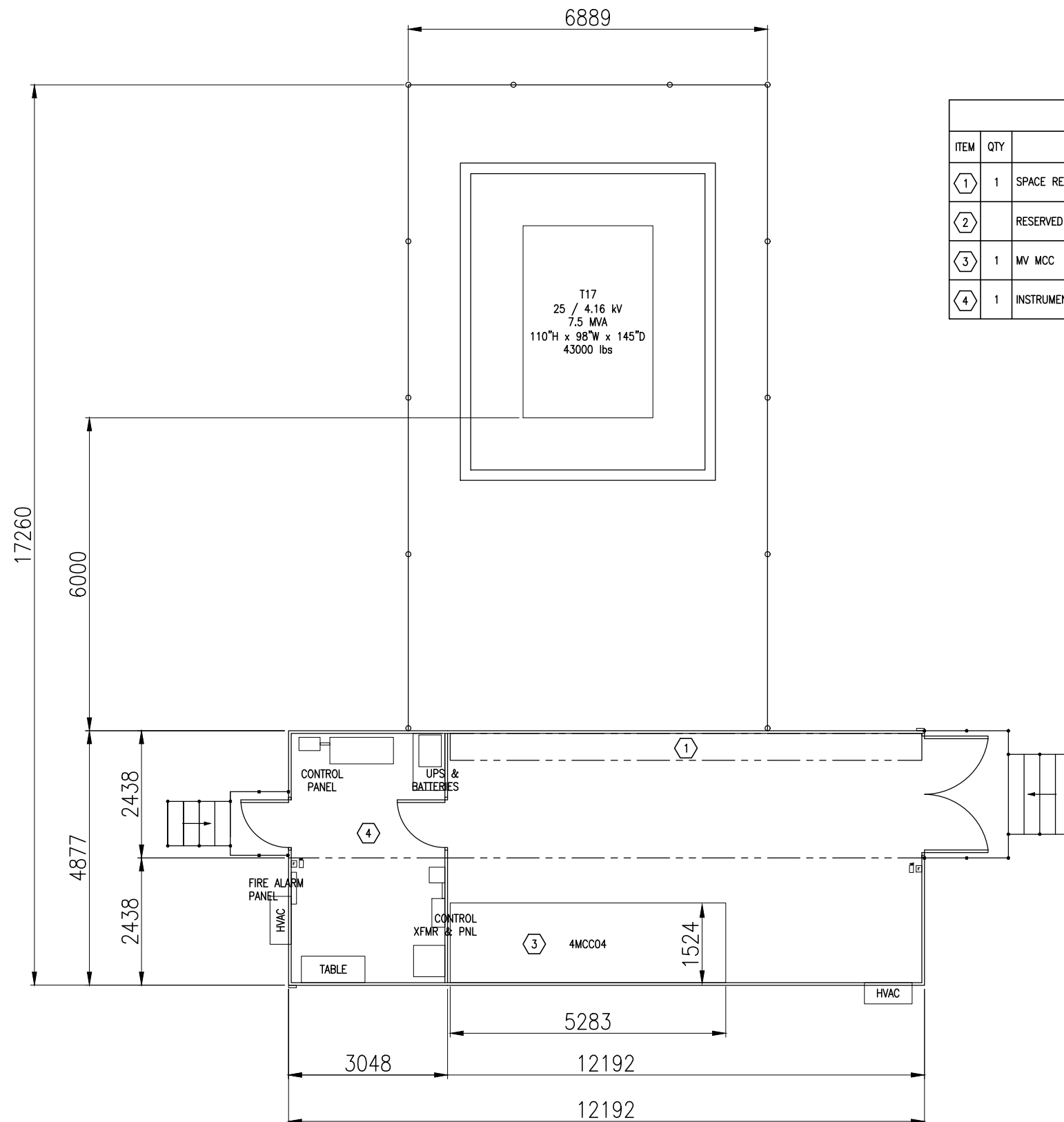
OFFICE
EBA-VANC

DATE
May 7, 2013

13320-18-050

SCALE 1:100





BILL OF MATERIALS		
ITEM	QTY	DESCRIPTION
①	1	SPACE RESERVED FOR LOW VOLTAGE / CONTROL EQUIPMENT
②		RESERVED
③	1	MV MCC
④	1	INSTRUMENTATION & COMMUNICATION ROOM

NOTES:

- REFER TO 02 10 00-TS SITE CONDITIONS & EQUIPMENT STANDARDS FOR SEISMIC AND ENVIRONMENTAL REQUIREMENTS.
- EQUIPMENT DIMENSIONS PROVIDED ARE APPROXIMATED TO RESERVE SPACE. VERIFY WITH ACTUAL EQUIPMENT DIMENSIONS.
- PROVIDE ADEQUATE SPACE ABOVE AND AROUND HEAT PRODUCING EQUIPMENT. VERIFY SPACING RECOMMENDATIONS WITH EQUIPMENT MANUFACTURER.
- HVAC AND OTHER BUILDING SERVICES EQUIPMENT MAY BE INSTALLED IN THE AREA MARKED SPACE RESERVED FOR LOW VOLTAGE/CONTROL EQUIPMENT.
- PROVIDE DOUBLE DOORS WITH REMOVABLE TRANSOM SIZED TO ALLOW REMOVAL OF LARGEST PIECE OF EQUIPMENT.
- HVAC SHALL BE PROVIDED WITH FILTERS AND BUILDING SHALL BE PRESSURIZED TO KEEP DUST OUT.

NOTES

- REFER TO 02 10 00-TS SITE CONDITIONS & EQUIPMENT STANDARDS FOR SEISMIC AND ENVIRONMENTAL REQUIREMENTS.
- EQUIPMENT DIMENSIONS PROVIDED ARE APPROXIMATED TO RESERVE SPACE. VERIFY WITH ACTUAL EQUIPMENT DIMENSIONS.
- PROVIDE ADEQUATE SPACE ABOVE AND AROUND HEAT PRODUCING EQUIPMENT. VERIFY SPACING RECOMMENDATIONS WITH EQUIPMENT MANUFACTURER.
- HVAC AND OTHER BUILDING SERVICES EQUIPMENT MAY BE INSTALLED IN THE AREA MARKED SPACE RESERVED FOR LOW VOLTAGE/CONTROL EQUIPMENT.
- PROVIDE DOUBLE DOORS WITH REMOVABLE TRANSOM SIZED TO ALLOW REMOVAL OF LARGEST PIECE OF EQUIPMENT.
- HVAC SHALL BE PROVIDED WITH FILTERS AND BUILDING SHALL BE PRESSURIZED TO KEEP DUST OUT.

STATUS
ISSUED FOR REVIEW

CLIENT



**EAGLE GOLD PROJECT
YUKON TERRITORY**

**Heap Leach E-House & Transformer
Yard Layout Mine**

PROJECTION

DATUM

FILE NO.

V23201707

DWN

SF

CKD

TG

REV

0

OFFICE

EBA-VANC

DATE

May 7, 2013

22110-18-050

SCALE 1:100

