



EAGLE GOLD PROJECT

CLAIMS AFFECTED BY CONSTRUCTION

Version 2013-01

DRAFT

MAY 2013

THIS PAGE INTENTIONALLY LEFT BLANK

DRAFT

TABLE OF CONTENTS

1	Introduction	1
1.1	Project Summary.....	1
1.2	Claims affected by construction	1

List of Tables

Table 1.2-1:	Summary of Claims.....	1
--------------	------------------------	---

List of Figures

- Figure 1.2-1: Claim Map for Eagle Gold Project Area
- Figure 1.2-2: Project Infrastructure General Arrangement with Mineral Claims

DRAFT

THIS PAGE INTENTIONALLY LEFT BLANK

1 INTRODUCTION

1.1 PROJECT SUMMARY

StrataGold Corporation (SGC), a directly held wholly owned subsidiary of Victoria Gold Corp. has proposed to construct, operate, close and reclaim a gold mine in central Yukon. The Eagle Gold Project (the 'Project') is located 85 km from Mayo, Yukon using existing highway and access roads. The Project will involve open pit mining at a production rate of approximately 10 million tonnes per year (Mt/y) ore, an average strip ratio (amount of waste: amount of ore) of 1.45:1.0 and gold extraction using a three stage crushing process, heap leaching, and a carbon adsorption, desorption, and recovery system over a 10 year mine life.

1.2 CLAIMS AFFECTED BY CONSTRUCTION

Stage 1 construction activities for the Project are located on claims wholly owned by SGC, with the exception of portions of the transmission line. Construction activities for the portions of the transmission line which are not within claims held by SGC will be conducted under permits independent of the Quartz Mining License.

Figure 1.2-1 shows the Project claims from the camp to the Silver Trail Highway as well as other SGC claims and mineral claims held by others. Figure 1.2-2 contains the overall site layout with respect to the SGC mining claims.

Table 1.2-1 provides a summary of the claims for the Project with corresponding use including buildings, site roads, heap leach facility, Dublin Gulch diversion channel, material and waste stockpiles, camp facilities and other associate infrastructure.

Table 1.2-1: Project Claims List and Use

Grant Number	Claim Name	Claim Nbr	Eagle Gold Mine Infrastructure
YA14987	DG	44	Heap leach facility
YA14989	DG	46	Dublin Gulch diversion channel
YA14992	DG	49	100 day stockpile; crushers; reclamation materials stockpile; secondary road; conveyors
YA14993	DG	50	Crushers; reclamation materials stockpile; secondary road
YA14994	DG	51	Dublin Gulch diversion channel; heap leach facility; reclamation materials stockpile; conveyors
YA14995	DG	52	Dublin Gulch diversion channel; Eagle Pup pond; heap leach facility; reclamation materials stockpile; secondary road
YA14996	DG	53	Dublin Gulch diversion channel; events ponds; Heap leach facility; process building; reclamation materials stockpile; secondary road
YA14997	DG	54	Heap leach facility
YA14998	DG	55	Water treatment plant; secondary road
YA17930	Smoky	1	100 day stockpile; main haul road; open pit; Platinum Gulch pond
YA17931	Smoky	2	100 day stockpile; main haul road; open pit; secondary road

Eagle Gold Project
 Claims Affected by Construction

Section 1: Introduction

Grant Number	Claim Name	Claim Nbr	Eagle Gold Mine Infrastructure
YA17932	Smoky	3	Fuel storage; main haul road; reclamation materials stockpile; secondary road; truck shop
YA17933	Smoky	4	100 day stockpile; reclamation materials stockpile; secondary road
YA17934	Smoky	5	Guard house; laydown; reclamation materials stockpile; secondary road; substation; transmission line
YA17935	Smoky	6	Camp; Dublin Gulch diversion channel; events ponds; laydown; lower Dublin south pond; reclamation materials stockpile
YA17937	Smoky	8	Camp; Dublin Gulch diversion channel; events ponds; laydown; lower Dublin north pond; secondary road
YA17956	Smoky	27	Transmission line; secondary road
YA17958	Smoky	29	Transmission line; secondary road; land treatment facility; landfill
YA17959	Smoky	30	Ice rich overburden storage area; transmission line
YA17968	Smoky	39	Ice rich overburden storage area; transmission line
YA17969	Smoky	40	Transmission line
YA17973	Smoky	48	Explosives storage facility; magazine storage facility; secondary road
YA17983	Smoky	66	Open pit
YA17984	Smoky	67	Open pit
YA30072	Smoky	44	Ice rich overburden storage area; transmission line
YA30073	Smoky	45	Main haul road; landfill; secondary road
YA30074	Smoky	46	Explosives storage facility; secondary road
YA30075	Smoky	47	Main haul road; secondary road
YA30076	Smoky	51	Open pit; main haul road
YA30077	Smoky	52	Open pit; main haul road
YA30078	Smoky	53	Open pit
YA30079	Smoky	54	Open pit
YA30080	Smoky	62	100 day storage area; crushers; main haul road; open pit
YA30081	Smoky	63	Open pit
YA30082	Smoky	64	Open pit
YA30083	Smoky	65	Open pit
YA43061	DG	100	Heap leach facility
YA43062	DG	101	Heap leach facility
YA43063	DG	102	Heap leach facility; process building; secondary road; water treatment plant
YA43064	DG	103	Heap leach facility
YA43120	Smoky	83	Dublin Gulch diversion channel; events ponds; secondary road; reclamation materials stockpile
YA43121	Smoky	84	Events ponds; secondary road; water treatment plant
YA43129	Smoky	92	Lower Dublin north pond

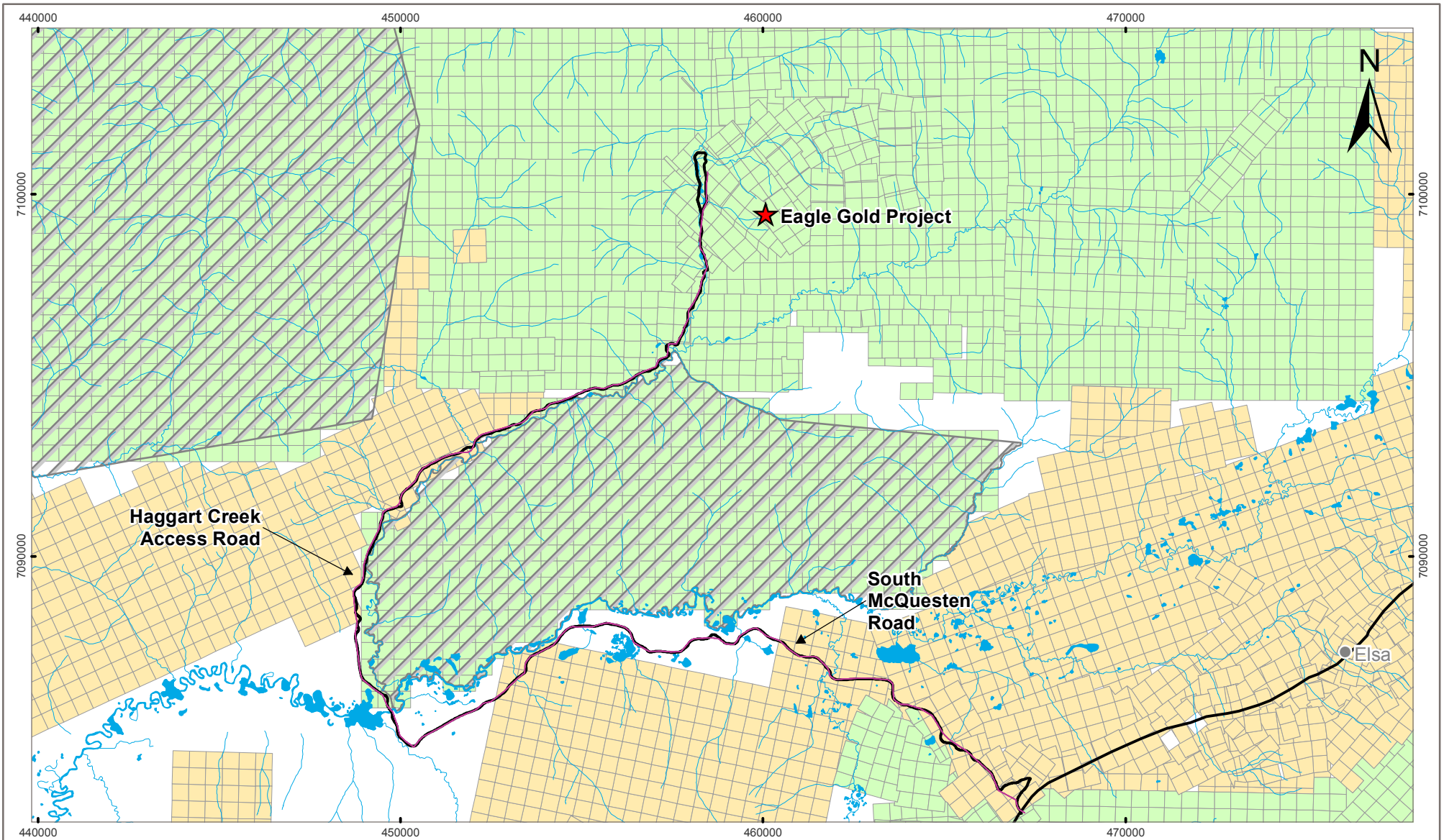
Grant Number	Claim Name	Claim Nbr	Eagle Gold Mine Infrastructure
YA43132	Smoky	95	Main haul road
YA43133	Smoky	96	Main haul road
YA43134	Smoky	97	Secondary road
YA43135	Smoky	98	Secondary road; transmission line
YA43144	Smoky	107	Ice rich overburden storage area
YA43145	Smoky	108	Ice rich overburden storage area; transmission line
YB18935	WEST	168	Transmission line
YB18937	WEST	170	Transmission line
YB18939	WEST	172	Transmission line
YB18949	WEST	182	Transmission line
YB18951	WEST	184	Transmission line
YB64630	Roni	1	Main haul road
YB64631	Roni	2	100 day stockpile; secondary road
YB64632	Roni	3	Open pit
YB64633	Roni	4	Open pit
YB64638	Roni	9	Heap leach facility; Dublin Gulch diversion channel
YC02855	Tin Dome	12	Secondary road
YC10707	Sun	10	Transmission line
YC10882	Sin	45	Transmission line
YC10893	Sin	56	Transmission line
YC11214	Dub	140	Magazine storage facility
YC11254	Dub	180	Transmission line
YC11281	Dub	207	Heap leach facility
YC11282	Dub	208	Heap leach facility; secondary road
YC11331	Dub	257	Secondary road
YC11332	Dub	258	Secondary road
YC11364	Dub	290	Transmission line
YC11365	Dub	291	Transmission line
YC38832	Dub	1536	Transmission line
YC38833	Dub	1537	Transmission line
YC38835	Dub	1539	Transmission line
YC38837	Dub	1541	Transmission line
YC38839	Dub	1543	Transmission line
YC38841	Dub	1545	Transmission line
YF33531	VBS	401	Transmission line
YF33552	VBS	422	Transmission line

Eagle Gold Project
Claims Affected by Construction

Section 1: Introduction

Grant Number	Claim Name	Claim Nbr	Eagle Gold Mine Infrastructure
YF33878	VBS	278	Transmission line
YF33879	VBS	279	Transmission line
YF33902	VBS	302	Transmission line
YF33903	VBS	303	Transmission line
YF33967	VBS	367	Transmission line
YF33969	VBS	369	Transmission line
YF33987	VBS	387	Transmission line
YF33989	VBS	389	Transmission line
YF33990	VBS	390	Transmission line
YF33996	VBS	396	Transmission line
YF33997	VBS	397	Transmission line
YF33998	VBS	398	Transmission line
YF33999	VBS	399	Transmission line

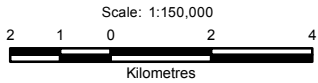
DRAFT



LEGEND

- ★ Eagle Gold Project
- StrataGold Claims
- Other Mineral Claims
- Nacho Nyak Dun Settlement Land
- Town / Village
- Road
- Transmission Line
- ~ Watercourse
- Waterbody

NOTES
 1. Data Sources: Government of Canada, StrataGold Corp, Yukon Geomatics.



PROJECTION UTM Zone 8	DATUM NAD83
FILE NO. V23201707	
CLIENT 	

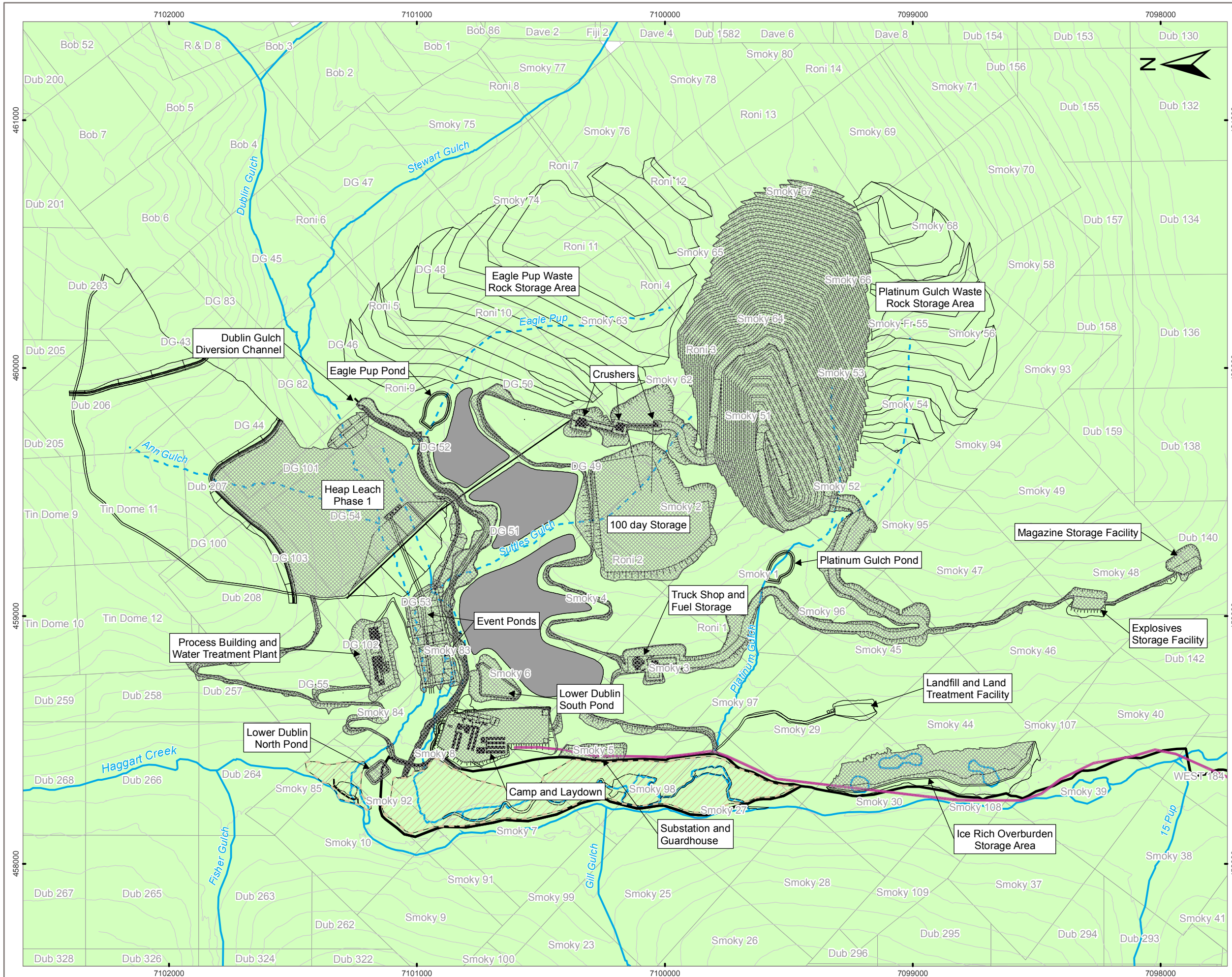
**EAGLE GOLD PROJECT
YUKON TERRITORY**

**Claim Map for
Eagle Gold Project Area**

PROJECT Eagle Gold	DWN SL	CKD IS	APVD IS	REV 0
OFFICE EBA_VANC	DATE May 15, 2013			

STATUS
ISSUED FOR REVIEW

Figure 1.2-1



LEGEND

- Site Infrastructure and Facilities
- Watercourse
- - - Watercourse (to be diverted or infilled)
- Fish Habitat Compensation Area
- Reclamation Materials Stockpile Area
- Extent of Clearing and Grubbing Activities During Stage 1 Construction
- StrataGold Claims
- Haggart Creek Access Road
- Transmission Line
- Contour (25 m)

NOTES

1. Data Source: StrataGold Corp
2. Contour data received from Underhill (February 2011) UTM NAD83.

STATUS
ISSUED FOR REVIEW

**EAGLE GOLD PROJECT
YUKON TERRITORY**

**Project Infrastructure
General Arrangement
with Mineral Claims**

PROJECTION UTM Zone 8	DATUM NAD83	CLIENT
Scale: 1:15,000 		
FILE NO. V23201707	DWN SL	CKD IS
PROJECT Eagle Gold	APVD IS	REV 0
OFFICE EBA_VANC	DATE May 15, 2013	

Figure 1.2-2