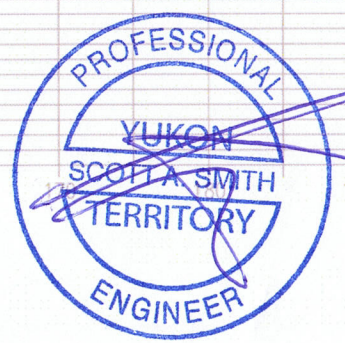

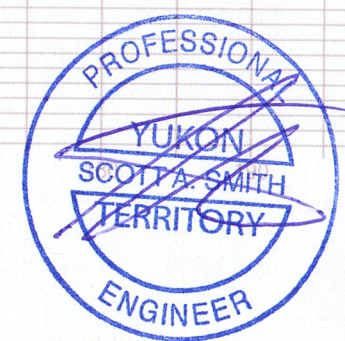
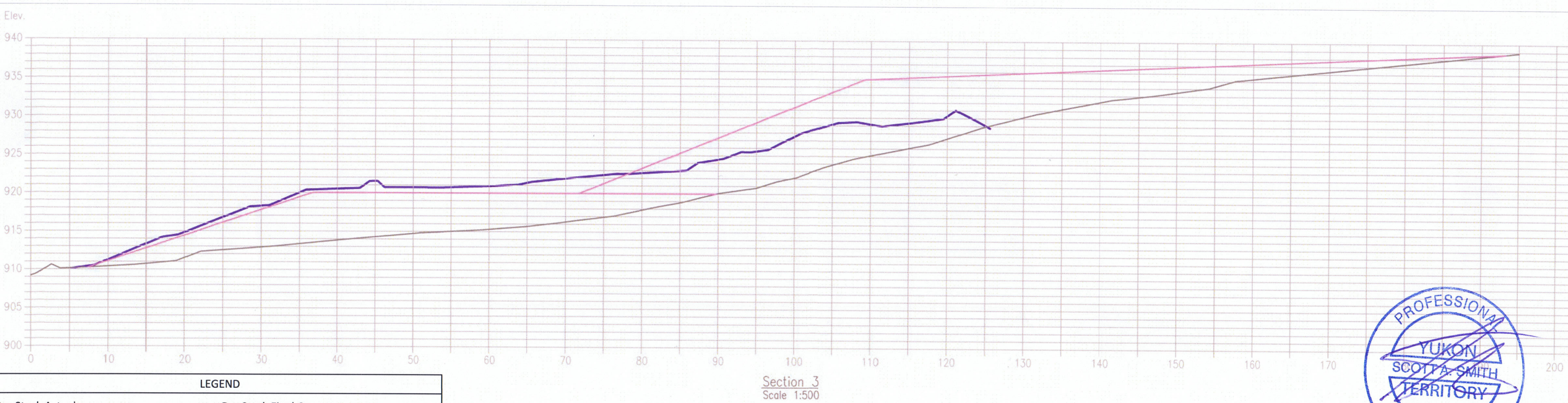
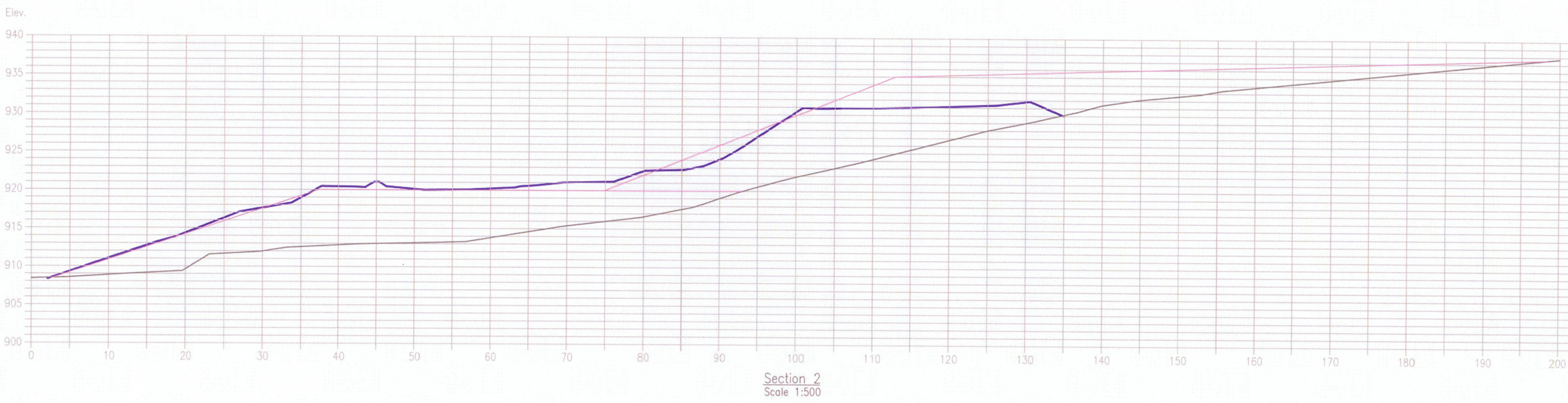


**LEGEND**


Dry Stack Actual	— (purple)	Dry Stack Final Crest	— (blue)
Dry Stack Final Design	— (pink)	Future Clearing	- - - (green)
Original Ground	— (brown)	Existing Clearing	— (light green)
Dry Stack Final Toe	— (red)	Future Berm	— (light blue)



 <p><b>ALEXCO RESOURCE CORP</b> Keno Hill District Mill</p>	DEPT.	APPROVED BY	DATE	COMMENTS	TITLE:	<p><b>DSTF</b> Design Plan Page 1 of 2</p>	
	SURVEY						Drawn by: D.Silander
	ENGINEERING						Date: March. 7, 2013
	GEOLOGY						Scale: As Noted
ALEXCO MANAGER					Approval:	Date:	
PROCON SUPER					File:		



LEGEND			
Dry Stack Actual	— (purple)	Dry Stack Final Crest	— (orange)
Dry Stack Final Design	— (pink)	Future Clearing	- - - (green)
Original Ground	— (brown)	Existing Clearing	— (light green)
Dry Stack Final Toe	— (red)	Future Berm	— (light blue)



**ALEXCO RESOURCE CORP**  
Keno Hill District Mill

DEPT.	APPROVED BY	DATE	COMMENTS
SURVEY			
ENGINEERING			
GEOLOGY			
ALEXCO MANAGER			
PROCON SUPER			

TITLE:	<b>DSTF</b>	
	Design Plan	
	Page 2 of 2	
Drawn by: D.Silander	Scale: 1:As Noted	
Date: Feb. 7, 2013	Approval:	Date:
File:		