

Memorandum

To: Alexco Resource Corp.

From: Catherine Henry & Holly Goulding, Access Consulting Group

CC: Kai Woloshyn, Alexco Resource Corp.

Date: August 29, 2014

Re: Noise Monitoring Data Summary, Keno, YT

INTRODUCTION

As part of the Keno Hill Silver District Mining Operations Noise Management Plan (the Plan) Alexco Keno Hill Mining Corp. (AKHM) has been monitoring noise levels in Keno City. The Plan was initially developed to address any potential noise effects that might occur with the addition of the two new mines, Lucky Queen and Onek 990. In addition to noise mitigation measures and the creation of a Noise Disturbance Notification Form and Noise Disturbance Register to track noise disturbance claims, AKHM committed to monitor noise levels within the community at various locations to assess the actual versus predicted noise levels and to determine if the noise abatement measures are effective. These noise data can now be used in the context of the Flame and Moth mine development.

The predicted noise levels were presented in the Noise Impact Assessment (NIA) completed by Patching Associates Acoustical Engineering Ltd (PAAE) conducted during the *Yukon Environmental and Socio-Economic Assessment Act* (YESAA) process (Project 2011-0315). The NIA identifies the noise sources from the current mining-related activities, noise receptors, and predicts the anticipated noise level from all existing sources and those associated with the addition of Lucky Queen and Onek 990 mining operations.

This memo presents noise monitoring results from April 2013 to June 2014.

NOISE RECEPTORS

AKHM has monitored noise at the five locations selected in the NIA as being potential noise receptors within the 2 km radius study area around Keno City. Starting in November 2013, noise has also been monitored at the Keno City campground. These locations are listed in Table 1 and shown in Figure 1.

Table 1 Representative Locations Assessed in Keno City

Monitoring Location	GPS Location	Description
R01	N63.90827 W135.29599	East end Residence, north side of Lightning Creek Road
R02	N63.91019 W135.29968	Residence, east side of Sign Post Road
R03	N63.91023 W135.30205	Town Center, north from the Snack Bar
R04	N63.91239 W135.30376	Residence, west side of Wernecke Road
R05	N63.90851 W135.30993	Residence, about 850m east from the Mill
Cmpgrnd	N63.90772 W135.29998	Keno City campground

The background noise levels experienced by these locations vary considerably, depending on location and local activities. Past and proposed mining operations are in addition to normal fluctuations in background levels. Climate parameters, such as relative humidity, temperature, and temperature inversions impact the sound level and propagation experienced by each of these receptors.

MONITORING TIMING

For the period from April 2013 to June 2014, a total of 23 monitoring events were carried out. Mining took place at Bellekeno, and milling at the Keno District Mill throughout 2013, until these were suspended on September 3rd. Operations at Onek 990 ceased at the end of May 2013. November 2013 through June 2014 data can be considered as baseline as no mining operations were taking place at that time. Exploration activities at Flame & Moth resumed on March 25, 2014.

RESULTS

The results from the 23 monitoring events from April 2013 to June 2014 are presented in Appendix A. All readings were taken using an Extech integrating sound level datalogger model 407780 to measure average dBA over 10 minutes. The wind speed, wind direction, temperature and precipitation data from the Keno District Mill weather station associated with each noise monitoring event have been reported as these can have a significant effect on measured noise levels. Any notable noise sources associated with the monitoring event were also documented.

Noise levels measured at all testing locations were well within or below the 50-90 dBA range deemed “what is socially acceptable for daytime noise limits” as defined in the past YESAB assessment for the Bellekeno Mine development (Project 2009-0030), with all measurements being below 70 dBA. Of the 11 measurements above 50 dBA, four occurred on April 8th, 2013 (R01, R02, R03, and R04) and two on May 19th, 2013 (R01 and R03). While this corresponds to the period of operations at Onek, only one observation associated with the measurements appears to be linked with mining operations (May 19th measurement at R03: ‘water truck went by’). In addition, observations for the May 19th event refer to creeks flowing, likely at their highest during spring freshet, and birds chirping, while wind conditions for the April 8th measurements were recorded as ‘Windy SSE’. The crusher was operating during most of the April 8th, most of the May 19th and all of the June 18th noise measurements. No crushing took place during measurements on April 10th, May 6th, July 24th, 2013 or during the winter, but preparation for mantle change out took place on July 24th. While the crusher could be a contributing noise source, other natural, anthropogenic or mine-related noise sources likely play an important role.

The other five measurements above 50dBA occurred in January (R05), April (R03), May (Cmpgrnd) and June (R02 and Cmpgrnd) 2014. The elevated January R05 measurement is associated with a grader driving by, while the activities documented during the April measurement at R03 include a loader driving by, a backup alarm, a car driving by, a car horn, people talking and a dog barking. The elevated May measurement at the campground is associated with the creek, which likely had high flows associated with spring freshet, while the June campground measurement was associated with wind in the trees and the creek. The activities documented during the June measurement at R02 include wind in the trees, a car driving by, a chainsaw, ravens, and people talking.

Figure 2 shows the noise levels measured compared to the predicted current and proposed mining operations noise levels plus ambient sound levels from the NIA. Many of the measurements exceeded the predicted levels, which range from 32 to 39 dBA, both in the period of mining operations and after operations had ceased. No mining or exploration activities took place between September 2013 and March 2014, this period can therefore be considered as baseline. As can be observed in Figure 2, the baseline noise levels can vary considerably with different levels of activity in Keno City. Baseline noise levels were greater than those predicted in the NIA on several occasions, indicating that many of the notable noise sources are not linked to Keno mining or milling operations.

Noise levels at the campground were around 30 dBA throughout the winter and increased to around 50 dBA in the spring. This increase is associated with natural sounds such as the creek flowing and birds chirping.

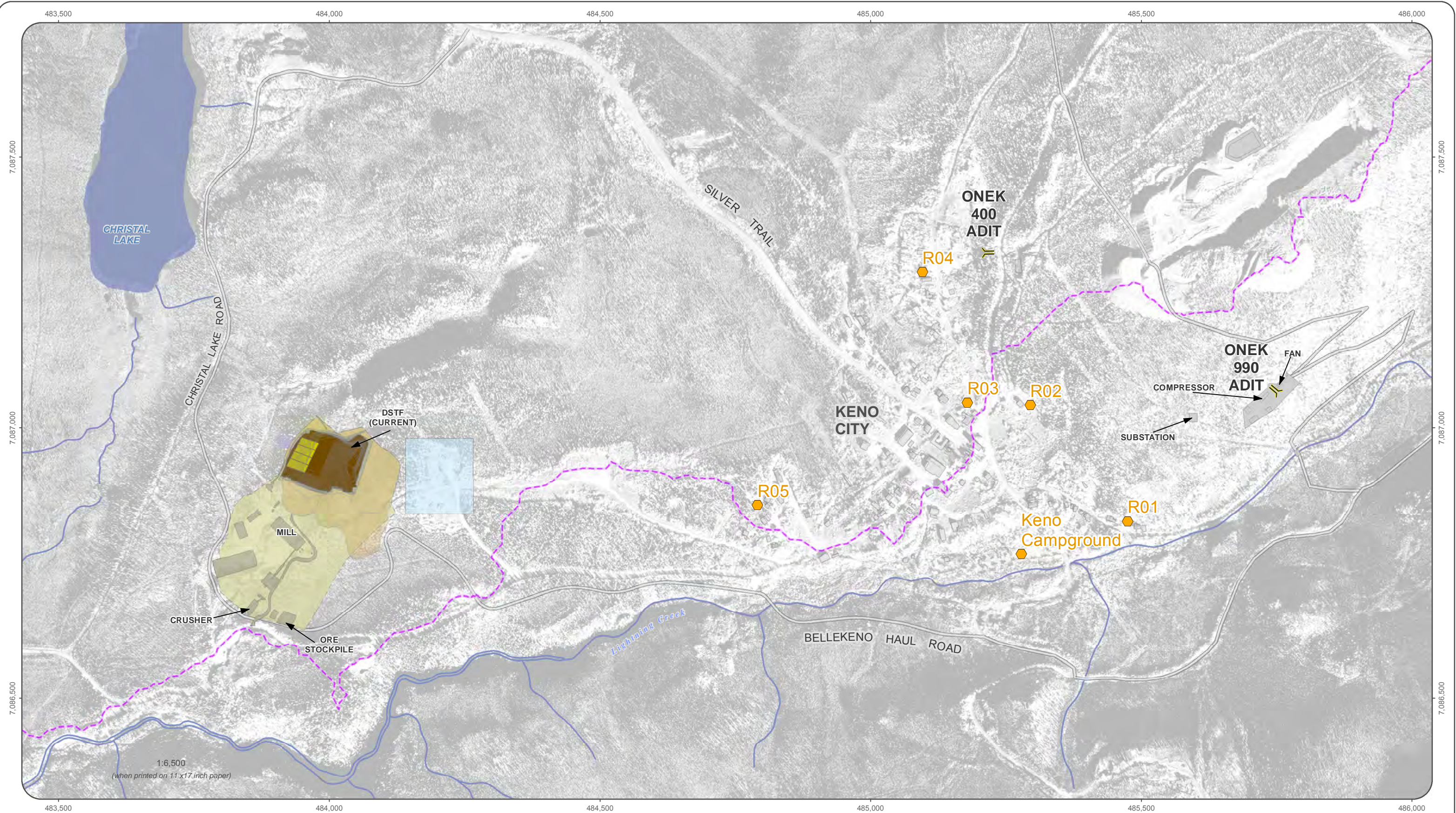
NOISE COMPLAINTS

No noise complaints received by Keno residents were provided by Alexco to Access Consulting.

CONCLUSION

Noise levels measured at all noise receptors were well within or below the 50-90 dBA range deemed to be socially acceptable for daytime noise limits. Compared to the predicted current and proposed mining operations noise levels plus ambient sound levels from the NIA, many of the measurements exceed the predicted levels, which range from 32 to 39 dBA, despite the temporary cessation of mining and milling operations in the Keno Hill Silver District between September 2013 and June 2014. It is recommended that proposed mining operations noise levels plus ambient sound levels generated in the NIA be revised using the noise monitoring data collected during the temporary closure period prior to the re-commencement of mining in the Keno Hill Silver District.

Given the short measurement interval of 10 minutes, measurements could have been influenced by fluctuations in background levels and climate parameters impacting noise levels and propagation. Thus, over a longer interval of measurement it is possible that lower noise levels might have been measured.



Aerial photography flight date: July 13th 2006. Ortho-rectification produced by Challenger Geomatics Ltd. Data obtained from EBA: "As built" spatial data: Mill pond (Y.E.S.), Mill structure, and current DSTF footprints, Roads (In House survey December 11th 2011). Design spatial data: Conveyance and water collection, diversion ditches and berm.

Datum: NAD 83; Projection: UTM Zone 8N

This drawing has been prepared for the use of Access Mining Consultants Ltd.'s client and may not be used, reproduced or relied upon by third parties, except as agreed by Access Mining Consultants Ltd. and its client, as required by law or for use of governmental reviewing agencies. Access Mining Consultants Ltd. accepts no responsibility, and denies any liability whatsoever, to any party that modifies this drawing without Access Mining Consultants Ltd.'s express written consent.

- | | | | | | |
|--|--------------------------|--|-------------------------------------|--|-------------------------------|
| | Noise Monitoring Station | | Watershed Boundaries | | Land Disposition Garbage Dump |
| | Roads | | Mill Site Footprint | | Buildings/Structures |
| | Watercourse | | DSTF Cover and Revegetation Phase I | | DSTF 322,000 Tonnes Design |
| | | | As Built, DSTF, Sept2013 | | |



KENO HILL SILVER DISTRICT MINING OPERATIONS

FIGURE 1
NOISE MONITORING STATIONS

MARCH 2014

I:\Keno_Area_Mines\FM\Map\02_Permit\YESAB\NoiseMonitoring\FM_NoiseMonManagement_20140318.mxd
(Last edited by: jpan; 3/18/2014/11:16 AM)

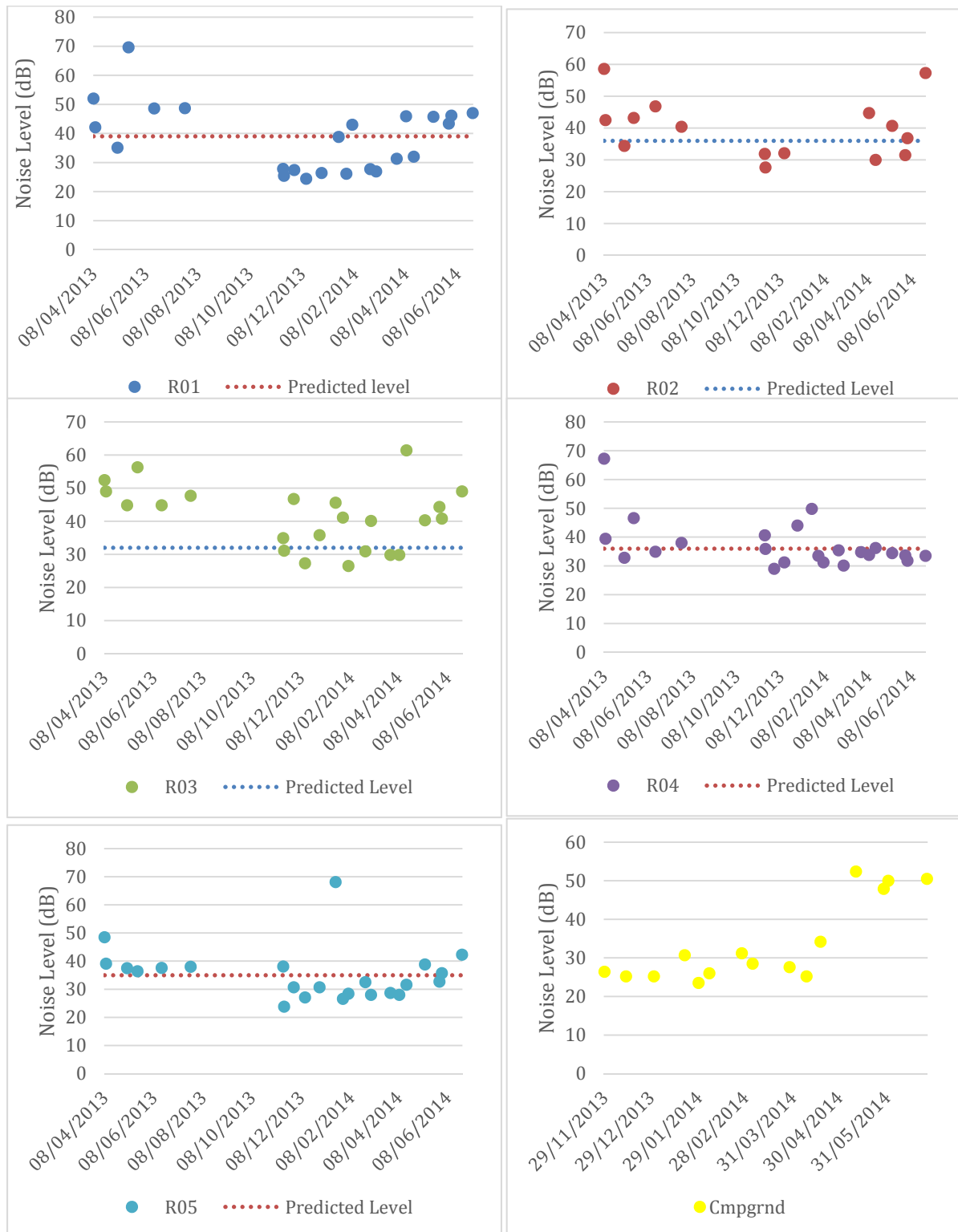


Figure 2 Keno Noise Monitoring Data

APPENDIX A

KENO NOISE MONITORING DATA

Keno Noise Monitoring Data

Date	Location	Time	Temp (°C)	Wind	Precipitation	DBA	Observations	Summary of Mining Activities
08/04/2013	R01	12:26	2	Windy SSE	None	52.0		Bellekeno Mine, Onek Mine, District Mill and Crusher operating
08/04/2013	R02	12:05	2	Windy SSE	None	58.6		Bellekeno Mine, Onek Mine, District Mill and Crusher operating
08/04/2013	R03	11:45	2	Windy SSE	None	52.4		Bellekeno Mine, Onek Mine, District Mill and Crusher operating
08/04/2013	R04	11:25	2	Windy SSE	None	67.2	A dog barked 2 times	Bellekeno Mine, Onek Mine, District Mill and Crusher operating
08/04/2013	R05	11:04	2	Windy SSE	None	48.5		Bellekeno Mine, Onek Mine, District Mill and Crusher operating
10/04/2013	R01	11:33	-6	Light SSW	None	42.1		Bellekeno Mine, Onek Mine and District Mill operating
10/04/2013	R02	13:00	-6	Light SSW	None	42.5		Bellekeno Mine, Onek Mine and District Mill operating
10/04/2013	R03	12:40	-6	Light SSW	None	49.0	Doors slamming. People talking	Bellekeno Mine, Onek Mine and District Mill operating
10/04/2013	R04	12:20	-6	Light SSW	None	39.4		Bellekeno Mine, Onek Mine and District Mill operating
10/04/2013	R05	12:00	-6	Light SSW	None	39.1		Bellekeno Mine, Onek Mine and District Mill operating
06/05/2013	R01	15:30	2	Wind West	None	35.1	Backup alarm at Onek. Tarps flapping in wind	Bellekeno Mine, Onek Mine and District Mill operating
06/05/2013	R02	15:30	2	Slight breeze	None	34.4		Bellekeno Mine, Onek Mine and District Mill operating
06/05/2013	R03	15:30	2	Windy	None	44.8	Dog barking. Boart truck	Bellekeno Mine, Onek Mine and District Mill operating
06/05/2013	R04	15:30	2	Slight breeze	None	32.8		Bellekeno Mine, Onek Mine and District Mill operating
06/05/2013	R05	15:30	2	Slight breeze	None	37.5	Dog barking	Bellekeno Mine, Onek Mine and District Mill operating
19/05/2013	R01	10:25	-2	Light (<10km/h) N	Light snow	69.6	Creek flowing loud. Squirrels making noise. Tarp flapping. Volvo going by on the BKR	Bellekeno Mine, District Mill and Crusher operating
19/05/2013	R02	10:10	-2	Light (<10km/h) E	Light snow	43.2	Creek flowing below. A few birds chirping. Boart pickup went by	Bellekeno Mine, District Mill and Crusher operating
19/05/2013	R03	9:55	-2	Light (<10km/h) E	Light snow	56.3	A few birds. Talking and trucks in town in the distance. Water truck went by	Bellekeno Mine, District Mill and Crusher operating
19/05/2013	R04	9:30	-2	Light (<10km/h) E	Light snow	46.6	Lots of birds calling and a woodpecker pecking close by	Bellekeno Mine, District Mill and Crusher operating
19/05/2013	R05	8:55	-2	Light (<10km/h) E	Light snow	36.4	A few birds and a squirrel chirping	Bellekeno Mine, District Mill and Crusher operating
18/06/2013	R01	16:25	22	Light (<10km/h) S	None	48.6	Creek flowing. Leaves rustling	Bellekeno Mine, District Mill and Crusher operating
18/06/2013	R02	16:10	22	Light (<10km/h) S	None	46.8	Volvo on BKR. 2 vehicles drove past. Gusts of wind rustling trees. Chainsaw nearby in town	Bellekeno Mine, District Mill and Crusher operating
18/06/2013	R03	15:55	22	Light (<10km/h) S	None	44.8	People talking and walking close by. 2 Vehicles driving through town and 1 driving by	Bellekeno Mine, District Mill and Crusher operating
18/06/2013	R04	15:40	21	Light (<10km/h) S	None	34.9	Wind rustling leaves. Birds calling	Bellekeno Mine, District Mill and Crusher operating
18/06/2013	R05	14:55	21	Light (<15km/h) S	None	37.6	Wind rustling leaves. Volvo on the BKR	Bellekeno Mine, District Mill and Crusher operating
24/07/2013	R01	11:07	23	light (<20km/h) S	None	48.7	Leaves rustling. Creek nearby. Birds chirping	Bellekeno Mine and District Mill operating
24/07/2013	R02	10:55	23	light (<10km/h) S	None	40.4	Three vehicles driving nearby. Leaves rustling	Bellekeno Mine and District Mill operating
24/07/2013	R03	10:43	23	light (<10km/h) S	None	47.7	Backup alarm at Mill. Leaves rustling. Someone in town hammering. Two vehicles drove by	Bellekeno Mine and District Mill operating
24/07/2013	R04	10:30	23	light (<10km/h) SE	None	38.0	Backup alarm at Mill. Mill crusher. Leaves rustling. Car drove by twice. Car on Silver Trail	Bellekeno Mine and District Mill operating
24/07/2013	R05	10:14	23	Calm	None	38.0	Backup alarm at Mill. Volvo down BKR. Mill crusher	Bellekeno Mine and District Mill operating
16/11/2013	R01	14:11	-20	Calm	None	27.8	Birds	Care and maintenance activities
16/11/2013	R02	13:51	-20	Calm	None	31.9	Squirrel, ravens, birds noise	Care and maintenance activities
16/11/2013	R03	13:35	-20	Calm	None	34.9	Squirrel, ravens, birds noise+ truck	Care and maintenance activities
16/11/2013	R04	13:20	-20	Calm	None	40.6	Lots of ravens activity, birds.	Care and maintenance activities
16/11/2013	R05	14:27	-20	Calm	None	38.1	Birds, truck plus door slamming + human voice + dog barking. All at about 200 meters from sound meter.	Care and maintenance activities
17/11/2013	R01	12:46	-30	Calm	None	25.4	Birds	Care and maintenance activities
17/11/2013	R02	12:25	-30	Calm	None	27.6	Birds, squirrel and vehicle.	Care and maintenance activities
17/11/2013	R03	12:07	-30	Calm	None	31.1	Ravens, squirrel and vehicle.	Care and maintenance activities
17/11/2013	R04	11:48	-30	Calm	None	35.9	Ravens	Care and maintenance activities
17/11/2013	R05	13:01	-30	Calm	None	23.8	Quiet	Care and maintenance activities
29/11/2013	Cmpgrnd	15:08	-23	Calm	None	26.4	Chainsaw in town, birds chirping	Care and maintenance activities
29/11/2013	R01	14:52	-23	Calm	None	27.4	Birds chirping, snowmobile in distance	Care and maintenance activities
29/11/2013	R03	14:36	-23	Calm	None	46.7	Ravens, chainsaw and dog barking in the distance, water truck drove by and backed up (alarm) nearby squirrels and little birds in distance, ravens flying by, someone coughing, doors closing nearby, dog barking	Care and maintenance activities
29/11/2013	R04	14:20	-23	Calm	None	29.0	Raven calling, snowmobile in distance, squirrel nearby	Care and maintenance activities
13/12/2013	Cmpgrnd	10:55	-20	N-W Calm	None	25.2	Quiet, birds signing once.	Care and maintenance activities
13/12/2013	R01	10:35	-20	N-W Calm	None	24.4	Quiet	Care and maintenance activities
13/12/2013	R02	10:17	-20	N-W Calm	None	32.1	Raven, birds, squirrel.	Care and maintenance activities
13/12/2013	R03	10:02	-20	N-W Calm	None	27.3	Raven, birds, squirrel.	Care and maintenance activities
13/12/2013	R04	9:44	-20	N-W Calm	None	31.2	Raven flying and walking around. Birds signing.	Care and maintenance activities
13/12/2013	R05	11:13	-20	N-W Calm	None	27.1	Quiet, squirrel.	Care and maintenance activities
31/12/2013	R05	13:52	-18	calm	None	30.7	A few little birds chirping	Care and maintenance activities
31/12/2013	R04	14:06	-18	Calm	None	44.0	lots of ravens flying, calling. Dog chewing on bone nearby. Person walking by, closing door	Care and maintenance activities
31/12/2013	R03	14:20	-17	Light (<10km/h)S	None	35.8	Two vehicles drove through town. Flagpole dinging in the wind. People talking, walking in town	Care and maintenance activities
31/12/2013	R01	14:34	-17	Calm	None	26.4	Little birds chirping. Raven flew by	Care and maintenance activities
31/12/2013	Cmpgrnd	14:49	-17	Calm	None	25.2	Ravens calling in distance. Someone coughing. Little birds chirping	Care and maintenance activities
20/01/2014	R04	14:04	-14	Calm	None	49.8	Distant grader. Birds. Vehicle	Care and maintenance activities
20/01/2014	R03	14:24	-13	Calm	None	45.6	Distant grader. Birds	Care and maintenance activities
20/01/2014	Cmpgrnd	14:39	-13	Calm	None	30.7	Distant grader	Care and maintenance activities
20/01/2014	R01	15:13	-14	Calm	None	38.8	Distant grader. Vehicle	Care and maintenance activities
20/01/2014	R05	14:56	-14	Calm	None	68.1	Grader went by	Care and maintenance activities
29/01/2014	R05	15:07	-12	Calm	None	26.6	Squirrels, whiskeyjack calling nearby	Care and maintenance activities
29/01/2014	R04	15:23	-12	Calm	None	33.5	Small bird chirping, ravens calling and flying by	Care and maintenance activities
29/01/2014	R03	15:36	-12	Calm	None	41.1	Ravens calling, truck driving by, squirrel chatting, small bird chirping	Care and maintenance activities

Keno Noise Monitoring Data

Date	Location	Time	Temp (°C)	Wind	Precipitation	D&A	Observations	Summary of Mining Activities
29/01/2014	R01	15:50	-12	Calm	None	26.1	Squirrel chatting, door closing in distance, birds calling, neighbour getting firewood	Care and maintenance activities
29/01/2014	Cmpgrnd	16:06	-12	Calm	None	23.5	Squirrel chatting, bird chirping, ravens flying over and calling	Care and maintenance activities
05/02/2014	R05	12:55	-20	light (5km/h)	None	28.4	Raven calling, squirrel chattering	Care and maintenance activities
05/02/2014	R04	13:12	-20	light(<5km/h)	None	31.2	Small bird chirping, ravens calling and flying, door closing in distance X3, neighbour getting firewood	Care and maintenance activities
05/02/2014	R03	13:27	-20	light(<5km/h)	None	26.5	Ravens calling in distance. Squirrel chattering, small birds, truck creaking	Care and maintenance activities
05/02/2014	R01	13:40	-18	light(<5km/h)	None	43.0	Squirrel chattering, ice inside old dump truck (beside sample site) cracked loudly, birds chirping	Care and maintenance activities
05/02/2014	Cmpgrnd	13:59	-19	light(<5km/h)	None	26.0	Small birds chirping, ravens in distance	Care and maintenance activities
26/02/2014	R05	14:14	-9	Calm	None	32.5	Water truck running nearby, driving. Squirrel chattering, little birds calling	Care and maintenance activities
26/02/2014	R04	14:31	-8	Calm	None	35.4	Ravens calling, person walking by and into house	Care and maintenance activities
26/02/2014	R03	14:56	-8	Calm	None	30.9	Lots of squirrels chattering, dog barking in distance, small birds chirping, radio from neighbours house, raven calling	Care and maintenance activities
26/02/2014	R01	15:10	-8	Calm	None	27.7	Little birds chirping. Squirrels	Care and maintenance activities
26/02/2014	Cmpgrnd	15:26	-8	Calm	None	31.2	Someone chainsawing in town. Birds chirping	Care and maintenance activities
05/03/2014	R05	14:19	-14	Calm	None	28.0	Raven calling in distance. Lots of little birds chirping nearby	Care and maintenance activities
05/03/2014	R04	14:37	-14	Slight breeze	None	30.1	Ravens calling nearby. Squirrels chattering. Helicopter in distance. Little birds chirping. Ravens flying by	Care and maintenance activities
05/03/2014	R03	14:50	-13	light (<10km/h)	None	40.1	Vehicle in town idling. Lots of little birds chirping. Raven calling. Flags tinging on flagpoles. Helicopter in distance. Vehicle driving through town and by twice.	Care and maintenance activities
05/03/2014	R01	15:04	-13	calm	None	26.9	Lots of little birds chorping. Ravens in distance. Helicopter faintly in distance	Care and maintenance activities
05/03/2014	Cmpgrnd	15:19	-14	very slight breeze	None	28.5	Little birds chirping. Ravens in distance. Helicopter in distance. Backup alarm in town	Care and maintenance activities
29/03/2014	R05	14:31	-3	Slight breeze	None	28.7	Lots of small birds calling nearby. Squirrel chattering	Care and maintenance activities
29/03/2014	R04	14:48	0	light (10 km/h)	None	34.8	Ravens calling closely. Small birds calling. Diamond drill and equipment working in distance. Wind chimes. Someone scraping snow	Care and maintenance activities
29/03/2014	R03	15:00	0	light (10 km/h)	None	29.8	Flags hitting flagpoles. Lots of small birds calling nearby. Raven calling. Squirrel chattering. Squirrel climbing on sign nearby	Care and maintenance activities
29/03/2014	R01	15:13	0	Slight breeze	None	31.3	Small birds. Squirrel chattering. Steel pipe made sound as it expanded	Care and maintenance activities
29/03/2014	Cmpgrnd	15:34	0	Slight breeze	None	27.6	Small birds calling. Bulldozer (drillers) going down Duncan creek road in distance. Someone working on something in town. Raven calling.	Care and maintenance activities
09/04/2014	R01	10:04	-10	Calm	None	45.9	Pickup , backup alarm. birds	Care and maintenance activities
09/04/2014	R02	9:55	-10	Calm	None	44.7	Water truck x 2, delivering.	Care and maintenance activities
09/04/2014	R03	9:24	-10	Calm	None	29.8	Water truck x 2, delivering.	Care and maintenance activities
09/04/2014	R04	9:00	-10	Calm	None	33.8	Ravens	Care and maintenance activities
09/04/2014	R05	10:47	-10	Calm	None	28.0	Ravens	Care and maintenance activities
09/04/2014	Cmpgrnd	10:32	-10	Calm	None	25.2	Squirrel	Care and maintenance activities
18/04/2014	R01	15:43	2	Calm	None	32.0	Birds, loader, backup alarm far away.	Care and maintenance activities
18/04/2014	R02	16:22	2	Calm	snow/rain	30.0	Car, birds	Care and maintenance activities
18/04/2014	R03	15:20	2	Calm	snow	61.4	Loader, backup alarm. Car +horn. People talking, dog barking	Care and maintenance activities
18/04/2014	R04	15:04	2	Calm	snow	36.2	Ravens, birds	Care and maintenance activities
18/04/2014	R05	16:37	2	Calm	None	31.6	Birds	Care and maintenance activities
18/04/2014	Cmpgrnd	15:04	2	Calm	rain/snow	34.2	Birds	Care and maintenance activities
11/05/2014	R01	9:14		strong N wind	none	45.7	Birds, creek	Care and maintenance activities
11/05/2014	R02	8:58		Light N wind	none	40.7	Birds, car, house doors slamming.	Care and maintenance activities
11/05/2014	R03	8:42		Light N wind	none	40.3	Birds	Care and maintenance activities
11/05/2014	R04	8:27		calme	none	34.4	Birds	Care and maintenance activities
11/05/2014	R05	10:21		Light N wind	none	38.8	Wind in trees, bear or moose cracking branches.	Care and maintenance activities
11/05/2014	Cmpgrnd	9:30		Light N wind	none	52.4	Creek	Care and maintenance activities
29/05/2014	R01	10:50		Light SW wind	none	43.4	Creek	Care and maintenance activities
29/05/2014	R02	10:30		Light SW wind	none	31.5	Raven, truck.	Care and maintenance activities
29/05/2014	R03	9:50		Light SW wind	none	44.3	Raven, car, truck running idle,starting.	Care and maintenance activities
29/05/2014	R04	9:40		Light SW wind	none	33.6	Ravens	Care and maintenance activities
29/05/2014	R05	11:40		Light SW wind	none	32.7	Birds	Care and maintenance activities
29/05/2014	Cmpgrnd	11:20		Light SW wind	none	47.9	Creek	Care and maintenance activities
01/06/2014	R01	15:49		strong wind all	none	46.1	Creek, wind, dog barking	Care and maintenance activities
01/06/2014	R02	15:33		strong wind all	none	36.8	Doors slamming x 2.	Care and maintenance activities
01/06/2014	R03	15:20		strong wind all	none	40.8	Truck, trailer, horn	Care and maintenance activities
01/06/2014	R04	15:03		light wind all	none	31.8	Atv far away	Care and maintenance activities
01/06/2014	R05	16:18		strong wind all	none	35.7	Silent	Care and maintenance activities
01/06/2014	Cmpgrnd	16:03		strong wind all	none	50.0	Creek	Care and maintenance activities
26/06/2014	R01	12:52		strong N wind	none	47.0	Wind in trees,creek, birds.	Care and maintenance activities