

BMC Minerals

Community Dinner and Presentation

- BMC Minerals will be hosting a community dinner on January 12th at the School (gathering room) followed by an update on our work in 2015 and our plans for 2016 for the Kudz Ze Kayah Project
- Dinner will start at 5 pm and the presentation at 6 pm

For additional information please contact Kelli Bergh at kdbergh@gmail.com or 778-233-7058

BMC Minerals

Elders Tour of Kudz Ze Kayah

- **BMC Minerals will host an Elders tour of Kudze Ze Kayah, on June 22, 2016**
- **Transportation will be provided from Ross River to KZK return**
- **We will depart from the band office at 9 am, June 22**
- **Enjoy a spectacular view of KZK from a helicopter**
- **Tour the core buildings**
- **Lunch at 12 pm at the KZK camp**

Please submit your names to Kathlene Suza at 969-2716 or 334-3462

BMC Minerals

Elders Tour of Kudz Ze Kayah

- **BMC Minerals will host a second Elders tour of Kudze Ze Kayah, on August 1, 2016**
- **Transportation will be provided from Ross River to KZK return**
- **We will depart from the band office at 9 am, August 1st**
- **Enjoy a spectacular view of KZK from a helicopter**
- **Tour the core buildings**
- **Lunch at 12 pm at the KZK camp**

Please submit your names to Kathlene Suza at 969-2716 or 334-3462

October 20, 2016

Ross River Dena Council
Ross River
Y0B 1S0

ATTENTION: Chief Jack Caesar

Re: Request for Meeting November 14 regarding Kudz Ze Kayah Project

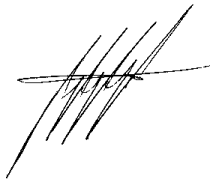
Dear Chief Caesar,

Now that we have completed our Prefeasibility Study on the Kudz Ze Kayah Project, BMC is planning another round of community consultations with all affected First Nations and residents of affected communities. As part of this process, we would like to suggest a meeting with yourself and your Council from 3:00 to 5:00 at your Band office Ross River on November 14, 2016. Following this meeting, we are proposing to conduct a community Open House at the Ross River Hope Centre from 6:30 to 8:30.

We will soon be sending you a copy of our Project Overview document, which provides details about the Kudz Ze Kayah Project Proposal, so that you may have an opportunity to review the document and be prepared to discuss the Project at our meeting. This meeting would be in addition to the commitments we made to you regarding providing you with the financial capacity to undertake your own technical review of our Project Proposal to YESAB.

We would appreciate you circulating this notice to your Council, and I will call you next week to discuss and hear how many of you will be available for this important meeting.

Sincerely,



Rob McIntyre, Senior Advisor
BMC Minerals



BMC Minerals (No.1) Ltd

2016 10 28

Ross River Dena Council
General Delivery
Ross River, YT Y0B 1S0

ATTENTION: Chief Jack Caesar

Re:

BMC Proj

Dear Norman,

As per our meeting yesterday when I gave you a copy of the Project Overview, I am sending you one more copy of BMC's Project Overview for your Council members. For your information, I am also sending a copy to the following TK Team members: Norman Sterriah, Norman Barichello and Josh Barichello.

We're looking forward to seeing all of you at the meeting in Ross River on November 14.

Sincerely,

A handwritten signature in black ink, appearing to read 'Rob McIntyre', with several horizontal strokes below the name.

Rob McIntyre

Senior Advisor



BMC Minerals (No.1) Ltd

2016 10 28

Ross River Dena Council
General Delivery
Ross River, YT Y0B 1S0

ATTENTION: Josh Barichello

Re: BMC Project Overview

Dear Josh,

I am sending you a copy of BMC's Project Overview so that you may prepare for the BMC meeting on November 14.

I'm looking forward to seeing all of you at the meeting in Ross River on November 14.

Sincerely,

A handwritten signature in black ink, consisting of several overlapping, slanted lines that form the name 'Rob McIntyre'.

Rob McIntyre
Senior Advisor



BMC Minerals (No.1) Ltd

2016 10 28

Norman Barichello
Box 11244
Whitehorse, YT Y1A 6N4

Dear Norman,

I am sending you a copy of BMC's Project Overview so that you may prepare for the BMC meeting on November 14.

We're looking forward to seeing all of you at the meeting in Ross River on November 14.

Sincerely,

A handwritten signature in black ink, consisting of several overlapping, slanted lines that form a stylized, abstract representation of the name 'Rob McIntyre'.

Rob McIntyre
Senior Advisor



BMC Minerals (No.1) Ltd

2016 10 28

Ross River Dena Council
General Delivery
Ross River, YT Y0B 1S0

ATTENTION: Norman Sterriah

Re: BMC Project Overview

Dear Norman,

I am sending you a copy of BMC's Project Overview so that you may prepare for the BMC meeting on November 14.

We're looking forward to seeing all of you at the meeting in Ross River on November 14.

Sincerely,

A handwritten signature in black ink, consisting of several overlapping, slanted lines that form the name 'Rob McIntyre'.

Rob McIntyre
Senior Advisor



INVITATION TO PARTICIPATE IN COMMUNITY ENGAGEMENT Kudz Ze Kayah Mine Project

COMMUNITY TOUR NOV. 14 – NOV. 18, 2016

BMC Minerals is continuing community engagement regarding the proposed Kudz Ze Kayah Mine Project. With the technical studies and engineering work to support our Pre-feasibility Study of the Kudz Ze Kayah Project complete, BMC Minerals is preparing a Project Proposal for submission to the Executive Committee of YESAB early next year. In support of the development of that submission, BMC has prepared a Project Overview.

Members of our project team are hosting a series of community meetings. You can provide feedback and learn more about the project by: Attending a community meeting (see schedule below); Calling: 867-336-3537; Providing a written submission by email: robm@bmcm minerals.com or Mail: # 530-1130 West Pender Street, Vancouver, BC V6E 4A4.

For more complete project information, or to view a copy of the Project Overview document, please visit www.kudzzekayah.com

Nov. 14	PRESENTATION AND OPEN HOUSE	6:30-8:30	ROSS RIVER HOPE CENTRE
Nov. 15	PRESENTATION AND OPEN HOUSE	6:30-8:30	FARO REC. CENTRE
Nov. 16	PRESENTATION AND OPEN HOUSE	6:30-8:30	WHITEHORSE, HIGH COUNTRY INN
Nov. 17	PRESENTATION AND OPEN HOUSE	6:30-8:30	WATSON LAKE REC CENTRE

CKRW Radio advertising:

To run 15 times, 3xday from Nov. 2 to Nov. 14

BMC Minerals is holding a series of Community Open Houses between November 14th and 18th in Ross River, Faro, Whitehorse, and Watson Lake. Each community's open house begins at 6:30pm, and presentations include an outline of the Project Plan for the BMC Minerals Kudz Ze Kayah Mine project, followed by a poster session allowing one-on-one interaction with member of the BMC team. For more information on the KZK Project and the upcoming open houses, visit [kudz ze kayah dot com](http://kudzze.kayah.com).

BMC meeting with Ross River Dena Council

Chief & Council Boardroom

Ross River, December 6th, 2016

Draft Agenda

1. KZK project –
 - a. Presentation of KZK project including mine plan
 - b. update on current status, next steps - (eg permitting, PFS study, etc.)
2. Technical review of YESAB Project Proposal
 - a. Proposed Procedure & Timing of review
 - b. RRDC technical assistance to review YESAB submission: Dr. Mohammedelhasan or Dena Cho Environmental?
3. Exploration MOU, SEPA, and TK Protocol – next steps
4. Type B Water Licence application – information
5. Interim TK study
6. Update on the EMR/RRDC negotiations on the RRDC Draft Land Use Management Plan.
7. Other items

Rob McIntyre

From: Rob McIntyre
Sent: November 30, 2016 4:09 PM
To: 'jackcaesar21@gmail.com'; jennycasars53@gmail.com; 'vernasukon@gmail.com'; 'dredies.rrdc@gmail.com'
Cc: Kelli Bergh; 'Dorothy Dick'; 'Kathlene Suza'; 'Nancy McIntyre'
Subject: FW: Meeting and open house in Ross River next week
Attachments: draft agenda for CC meeting Dec 6 2016.docx

Sorry, my mistake in last email about meeting time: we are **meeting Chief & Council at 2:00 p.m.** not 4:00 p.m.
See you then, Cheers,
Rob

From: Rob McIntyre
Sent: November 30, 2016 3:59 PM
To: 'jackcaesar21@gmail.com' <jackcaesar21@gmail.com>; 'dredies.rrdc@gmail.com' <dredies.rrdc@gmail.com>; 'jenny' <caesar53@gmail.com>; 'vernasukon@gmail.com' <vernasukon@gmail.com>
Cc: 'Dorothy Dick' <dorothy.dick@gmail.com>; Scott Donaldson <scottd@bmcminerals.com>; Kelli Bergh <kellib@bmcminerals.com>; 'Kathlene Suza' <kat.suza@northwestel.net>; Jim Newton <jimn@bmcminerals.com>
Subject: Meeting and open house in Ross River next week

Chief Caesar and Council,
Thank you for agreeing to meet with us at 4:00 pm on December 6th to present information and hear your views regarding the KZK Project. We attach the proposed agenda for ease of reference; I also understand you may have some other items you wish to speak about.

We will also be holding a public Open House for residents of Ross River from 5:30 to 7:30 pm at the Hope Centre. At the Open House we will be giving a detailed presentation on the KZK mine plan; we also offer to give this presentation to Chief & Council if you wish.

Best Regards,
Rob



Robert L. McIntyre | Vice President, External Affairs
BMC Minerals (No. 1) Ltd. www.bmcminerals.com
530 - 1130 West Pender St. Vancouver, BC V6E 4A4
robm@bmcminerals.com Cell: 867-336-3537

Rob McIntyre

From: Rob McIntyre
Sent: November 30, 2016 3:59 PM
To: 'jackcaesar21@gmail.com'; 'dredies.rrdc@gmail.com'; 'jenny'; 'vernaukon@gmail.com'
Cc: 'Dorothy Dick'; Scott Donaldson; Kelli Bergh; 'Kathlene Suza'; Jim Newton
Subject: Meeting and open house in Ross River next week
Attachments: draft agenda for CC meeting Dec 6 2016.docx

Chief Caesar and Council,

Thank you for agreeing to meet with us at 4:00 pm on December 6th to present information and hear your views regarding the KZK Project. We attach the proposed agenda for ease of reference; I also understand you may have some other items you wish to speak about.

We will also be holding a public Open House for residents of Ross River from 5:30 to 7:30 pm at the Hope Centre. At the Open House we will be giving a detailed presentation on the KZK mine plan; we also offer to give this presentation to Chief & Council if you wish.

Best Regards,
Rob



Robert L. McIntyre | Vice President, External Affairs
BMC Minerals (No. 1) Ltd. www.bmcminerals.com
530 - 1130 West Pender St. Vancouver, BC V6E 4A4
robm@bmcminerals.com Cell: 867-336-3537

Radio Ads for Dec 6/16 Ross River Open House

Radio spots to run Dec. 2, 5 and 6 – 3 x day (9 spots) in the top spots morning, noon and end of day.

BMC Minerals invites all residents of Ross River to it's Community Open House for Dinner, Presentation and Discussion Period on Tuesday, December 6 from 5:30 to 7:30 at the Ross River Hope Centre.

The presentation will include an outline of the Project Plan for the BMC Minerals Kudz Ze Kayah Mine project, followed by a poster session which will allow one-on-one interaction with members of the BMC team. The KZK project is a proposed open pit zinc copper mine, and is located approximately 110 km SE of Ross River, and 24 km S of Finlayson Lake. More information on the KZK Project and the upcoming open houses can be obtained by visiting kudzzekayah.com.



BMC Minerals Group

April 2015

Ross River Presentation

Strictly Private and Confidential

Introduction

Strong Partnership

- BMC Minerals Group (“BMC”) was founded in 2014 through a partnership between its highly experienced management team and Barclays Natural Resource Investments (“BNRI”)

Attractive Focus

- Focused on the development of base metals projects (primarily zinc, copper, lead)
- Initial focus is on Western Canada

Defined Business Plan

- Specifically focused on projects which are post-resource definition / pre-feasibility study (“PFS”) stage
- Working within the local community to complete environmental other baseline studies, completion of feasibility and permitting requirements and if economic, bringing the mines into production, thereby providing long term value to both the company and the community

Cornerstone Asset

- BMC acquired Kudz Ze Kayah (“KZK”) in January 2015 from Teck Resources
- KZK is a PFS stage zinc-copper-gold-silver-lead development asset with resource upside (KZK is a VMS-type deposit)

Funding

- Shareholders have provided sufficient initial funds to enact the business plan.

BMC Senior Management Team

BMC management is very experienced and have previously developed a number of mines into production



■ **Gary Comb (*Executive Chairman*)**

- ▶ A Mechanical Engineer, Gary has 30 years mining industry experience in Australia and has extensive mine operations and contract mining experience



■ **Scott Donaldson (*CEO*)**

- ▶ A Mining Engineer with 25 years experience mining in Australia and New Zealand (open-cut and underground mining) in various base metals, gold, coal and chromite. Has extensive mine construction, operations and contract mining experience.



■ **Neil Martin (*Exploration Manager*)**

- ▶ 25 years experience in mineral exploration across base metals, gold, iron ore and coal in Australia and Asia, and holds a PhD in Economic Geology focussed on VMS deposit analysis and evaluation

Community / Stakeholders Relations – **What we believe in!**

BMC believes that an open and mutually beneficial relationship between the Company, Local Communities and other stakeholders is of paramount importance and is a first priority in project development

BMC Key Commitments...

- *Respect local issues and culture*
- *Respect the environment*
- *Listen as a key component of consultation*
- *Promote a positive legacy by working together with local community (leave a legacy we can be proud of and that the local community is happy with)*
- *Promote enhanced business opportunities and local involvement*
- *Provide training, work skills and increased opportunity for employment at supervisory and management level*
- *Cultural Awareness*

...Achieved By

- ✓ Managers to lead by example
- ✓ Being a “Good Neighbour”
- ✓ Strong community relationships
- ✓ Establish business alliances, employment and practical training initiatives in the work place
- ✓ Cross cultural awareness, induction, training and education in local Indigenous culture and work-place relationships
- ✓ Project staff to understand local community issues and to take these in to consideration when making decisions
- ✓ Management of heritage issues to be given high priority

- ✓ **Invest real money** in the ground with **local involvement**
- ✓ Advance the projects while being **sensitive to local matters**
- ✓ Expand resource with development and step out drilling
- ✓ Final design and operating philosophy at all stages to be **responsibly designed** and **to leave a positive legacy**
- ✓ **Listen**

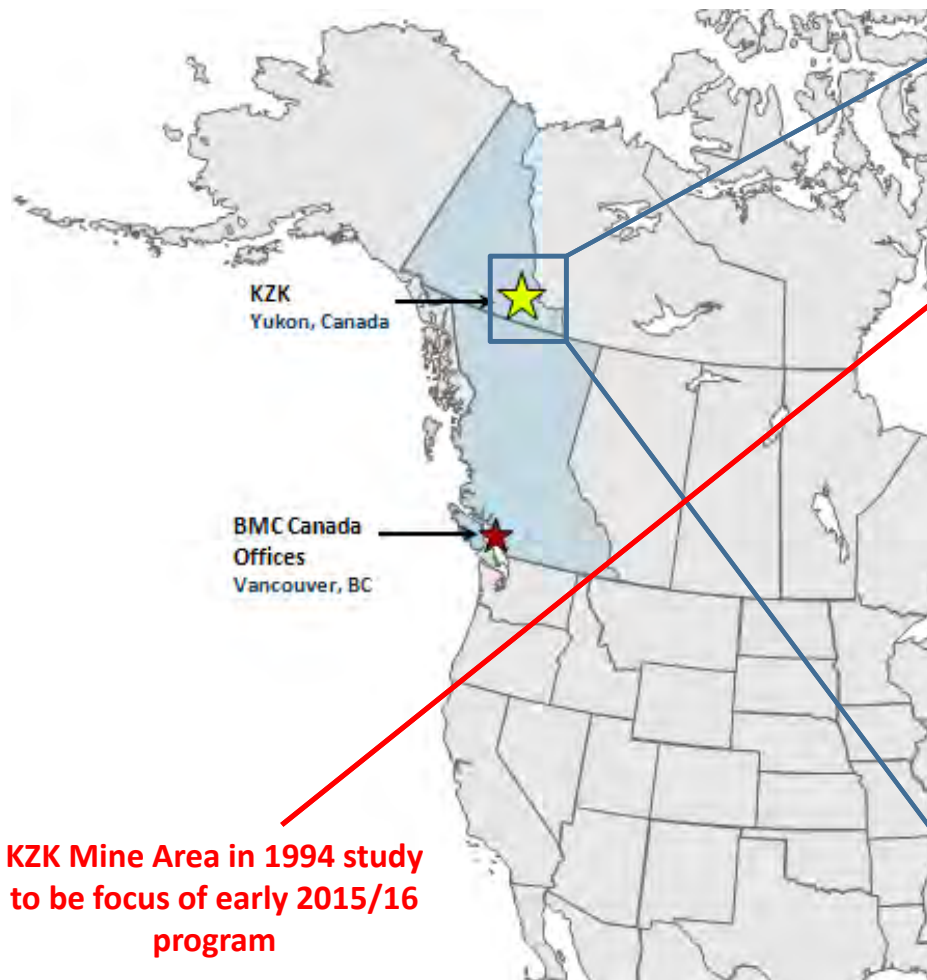
KZK Overview – **What we think we know today!**

KZK is a VMS-type deposit, which is BMC's specialty given its experience.

- KZK has been idle since 1995 when Cominco completed a mining study on a 2,950 tonnes per day (tpd) open pit operation
- Undertake full environmental, socio-economic and heritage studies to support the project environmental assessment
- BMC plans to complete required permitting (including First Nations consultation), drill development targets, and complete a Feasibility Study on KZK
- BMC will work to expand the resource so as to increase the potential for a longer life mine and greater legacy benefits
- BMC will work towards constructing and operating the KZK project rather than just acquire mineral claims, but this will require further permitting once the 2015/16 exploration and environmental work is complete
- Mineralisation in ABM (KZK) deposit is ~ 13 Mt containing copper, zinc, lead, gold and silver and this area will be the focus of 2015 work

KZK – Location

KZK is accessible by road and the asset has good access to existing infrastructure such as water, paved highways, excess port capacity (in Skagway / Stewart ports), contractors and labour



Exploration and the KZK Potential Development Timeline



KZK	2015				2016				2017				2018				2019				2020			
	Q1	Q2	Q3	Q4	Q1	Q2	Q3	Q4	Q1	Q2	Q3	Q4	Q1	Q2	Q3	Q4	Q1	Q2	Q3	Q4	Q1	Q2	Q3	Q4
Closing	█																							
Setup	█	█																						
Base Line Studies for EA	█	█	█	█	█	█	█	█	█	█	█	█												
Drilling / Development			█	█	█	█	█	█																
PFS		█	█	█	█	█	█	█																
Permit Approvals						█	█	█	█	█	█	█												
BFS							█	█	█	█	█	█												
Construction / Exit Decision													█											
Construction													█	█	█	█	█	█	█	█				
Ramp Up																					█	█		
Steady State Operations																								█

KZK Resource Targets

- BMC has located 3 initial targets for adjacent resource extensions
 - ▶ ABM East (near main KZK deposit, on other side of late-stage faults)
 - ▶ GP4F deposit extension (near R15 deposit)
 - ▶ Pelly area (near Wolverine)
- BMC's aim is to add to the existing geological resource by the end of 2016
- A proven resource upside would have the potential to increase the economics of a KZK operation by extending the mine life
- This would have a positive impact by providing a more sustainable operation



Key KZK Milestones

- ✓ Commence drill program in 2015 (confirming current resource to JORC levels, testing proximal resource extensions and gaining core for metallurgical testing)
- ✓ Re-log existing drill core on site
- ✓ Update KZK resource estimate
- ✓ Update historical metallurgical work
- ✓ Begin baseline studies (Environmental, Socio-economic, Traditional Knowledge, Heritage) for the Environmental Assessment (EA) and ensure local community involvement
- ✓ Continue discussions with Kaska Nation around implementation of the existing SEPA obligations
- ✓ Complete Pre Feasibility Study in 2016 to support commencement of application for Quartz Mining License
- ✓ Complete Definitive Feasibility Study by early 2017

Project Study History

- Environmental and Social Baseline Studies were conducted in the 1990s
- Environmental and Social Impact Assessment was completed in the 1990s (*under the Canadian Environmental Assessment Act*)
- Water Licence was issued in the 1990s

Environmental Study Requirements

- A Project Proposal and Decision Document is required by the Yukon Environmental and Socio-economic Assessment Board before a mining licence can be issued
- Environmental and social baseline studies in 2015/2016 will build and add to the data collected in the 1990s to support the Project Proposal submission
- Studies will incorporate Kaska Nation and community feedback and participation

Planned Environmental Baseline Studies

Topic	Sub-Components	Timing
Geophysical Environment	<ul style="list-style-type: none"> • Soils • Terrain • Metal Leaching and Acid Rock Drainage 	Summer 2015 and ongoing
Atmospheric Environment	<ul style="list-style-type: none"> • Acoustic • Air Quality • Green House Gas Emissions • Climate 	Spring 2015 and ongoing
Aquatic Environment	<ul style="list-style-type: none"> • Surface Water Quantity • Surface Water Quality • Groundwater Quantity • Groundwater Quality • Sediment Quality • Benthic Invertebrates • Fish 	Before freshet 2015 and ongoing

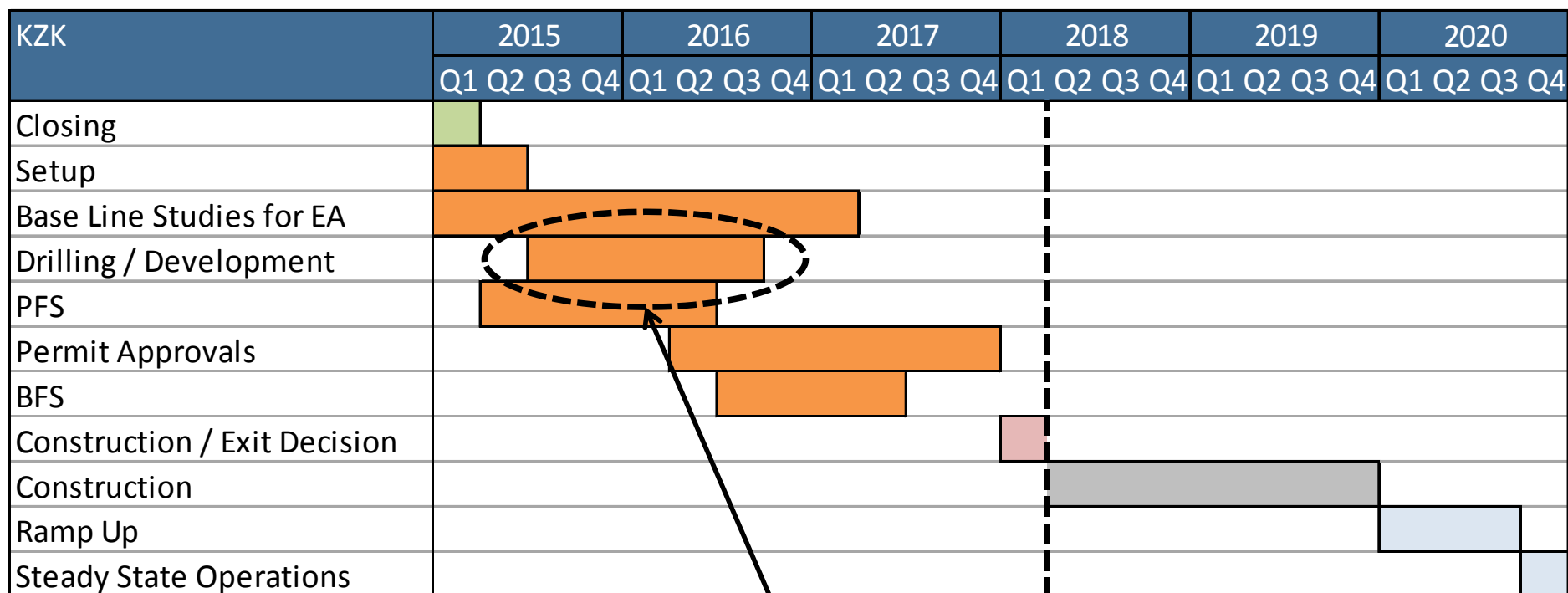
Planned Environmental Baseline Studies (Continued)

Topic	Sub-Components	
Wildlife	<ul style="list-style-type: none">• Caribou• Moose• Grizzly, Furbearers• Migratory Birds• Birds of Prey• Breeding Birds• Species at Risk	Seasonal 2015/2016
Vegetation	<ul style="list-style-type: none">• Ecological Communities of Concern Species of Concern/at Risk• Invasive Species• Wetlands	Summer 2015

Planned Socio-Economic Studies

Topic	Timing (to initiate study)
Employment and Economy	Spring 2015
Land and Resource Use	Spring 2015
Traditional Land and Resource Use	Spring 2015
Community and Regional Infrastructure	Spring 2015
Heritage	Summer 2015
Health	Summer 2015 and ongoing

Exploration and the KZK Potential Development Timeline



2015 & 2016 Exploration

ABM Deposit



Land-based (skid) drilling – focus of ABM deposit exploration work



(examples for illustration only)

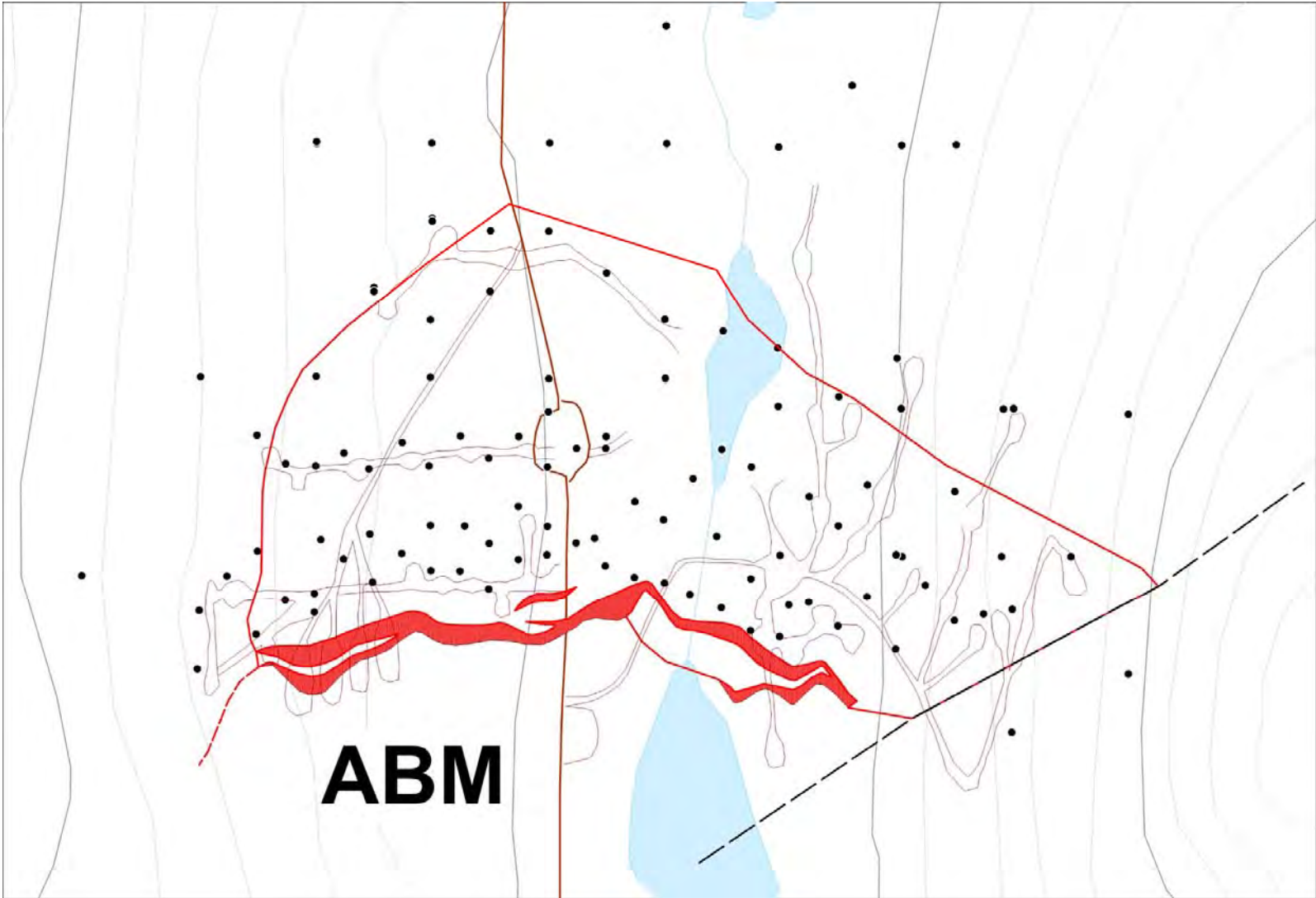
Drill Core – Invaluable Information



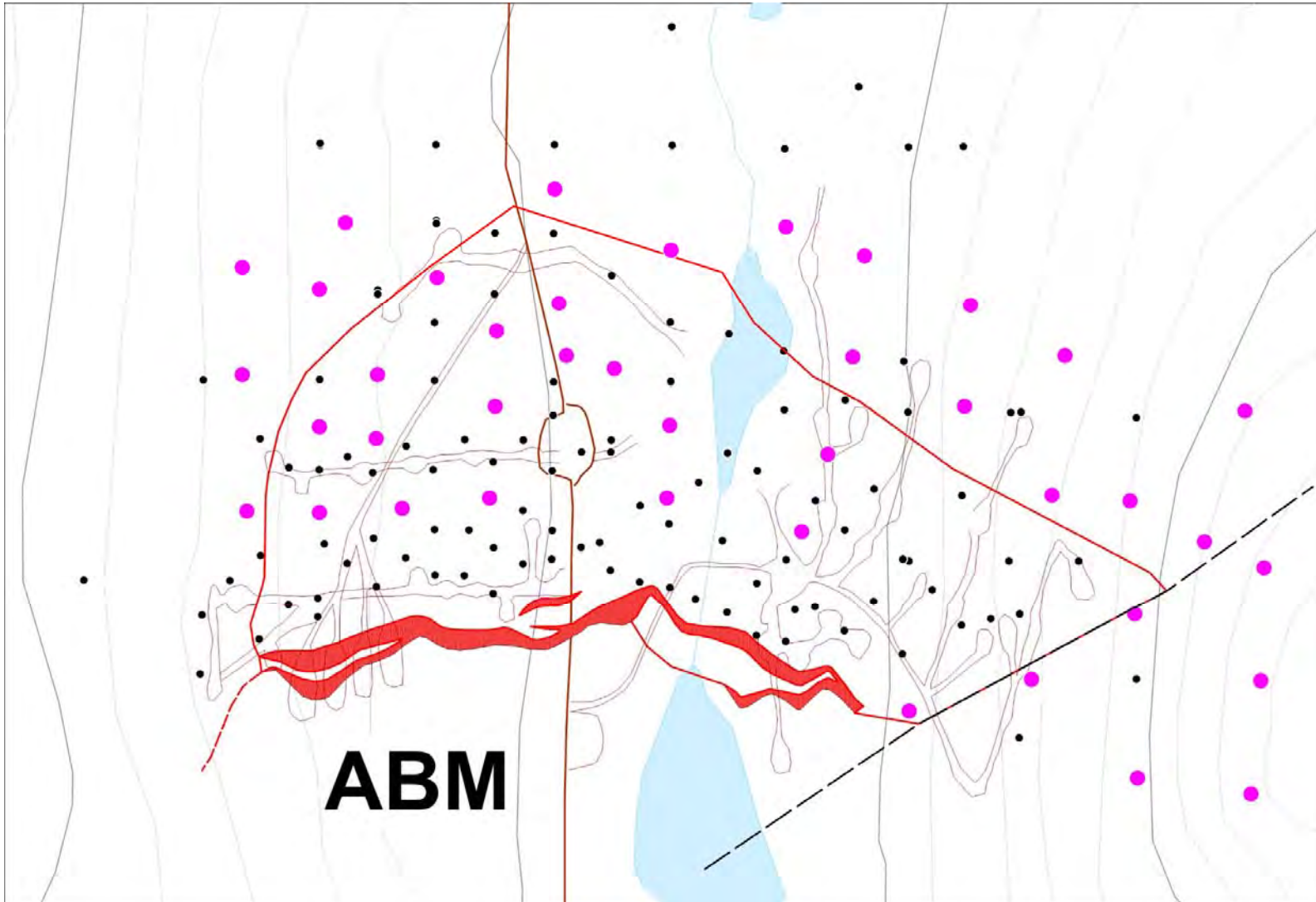
Typical Drilling Program Core Shack – logging, sampling



Existing Drill Holes – ABM Deposit



Proposed 2015 & 2016 ABM Drill Hole Locations



Soil Sampling



(example for illustration only)

Prospecting – basic method used to discover ABM



(example for illustration only)



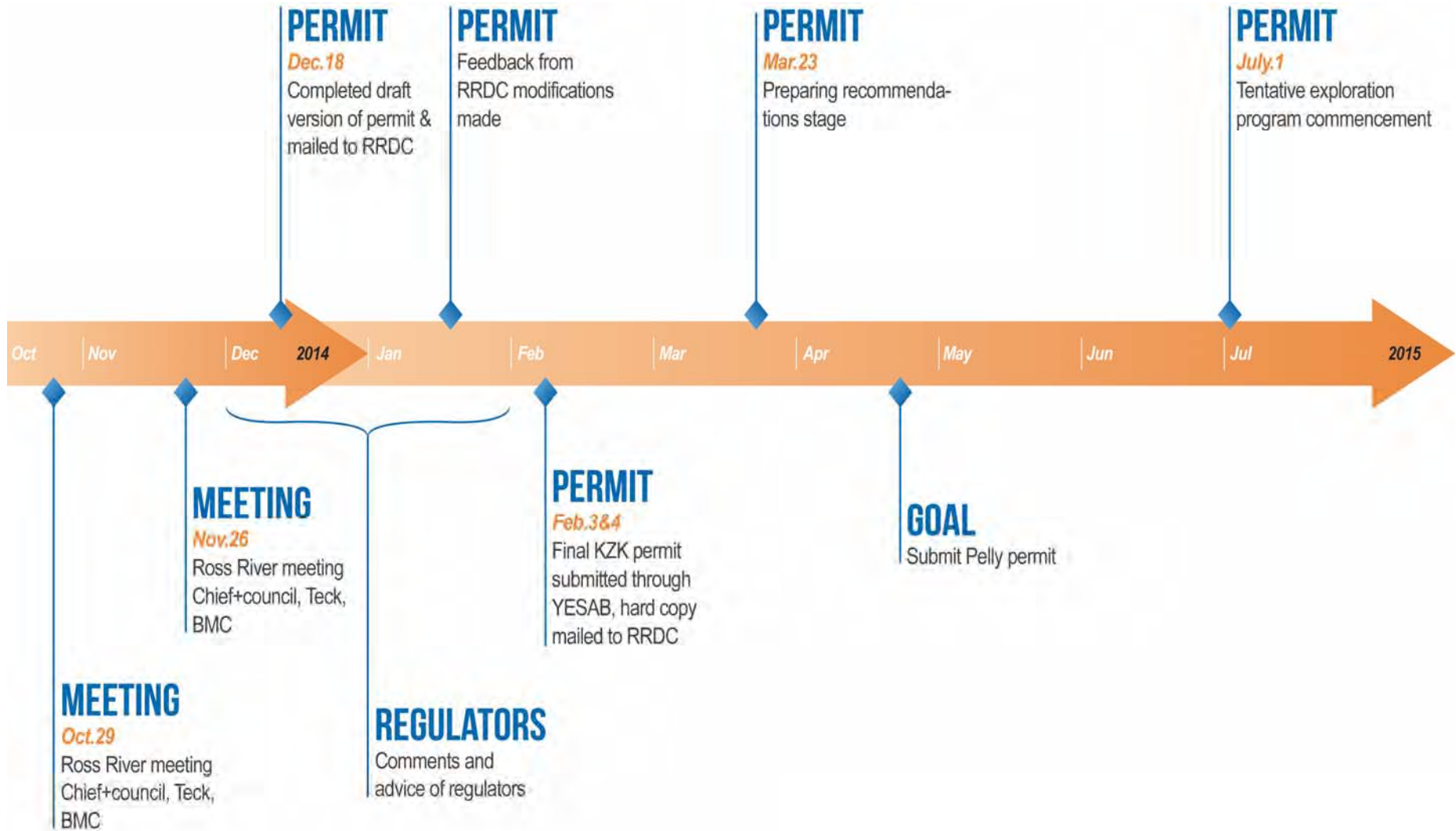
(example for illustration only)

Helicopter-supported drilling



(examples for illustration only)

Exploration Permitting Process



Appendix

Disclaimer

Disclaimer:

This Presentation and other information which you are given at the time of presentation, in whatever form, do not constitute or form part of any offer or invitation to sell or issue, or any solicitation of any offer to purchase or subscribe for, any shares in BMC, nor shall it or any part of it form the basis of, or be relied upon in connection with, any contract or commitment whatsoever. No part of the contents of this Presentation is to be taken as any form of commitment on the part of the Company to proceed with any transaction, and the right is reserved to terminate any discussions or negotiations with any prospective investors. The distribution of this Presentation in certain jurisdictions may be restricted by law. No action has been taken or will be taken by the Company, by the existing shareholders or by any professional adviser to the Company, that would permit an offer of shares or possession or distribution of this Presentation where action for that purpose is required. Persons into whose possession this Presentation comes should inform themselves about, and observe, any such restrictions. Any failure to comply with these restrictions may constitute a violation of the securities laws of any such jurisdiction.

In no circumstances the Company will be responsible for any costs, losses or expenses incurred in connection with any appraisal or investigation of the Company. In furnishing this Presentation, the Company does not undertake or agree to any obligation to provide the recipient with access to any additional information or to update this Presentation or to correct any inaccuracies in, or omissions from, this Presentation that may become apparent.

This Presentation has been prepared by the Company and all reasonable care has been taken to ensure that the facts stated in the Presentation are true and accurate in all material respects to the best of the directors' knowledge, information and belief and that the opinions expressed are fair and reasonable. No reliance can be placed for any purpose whatsoever on the information contained in this Presentation or on its completeness. Certain figures noted herein are illustrative projections and are based on a number of assumptions, and no figures should be regarded as a profit forecast.

This Presentation includes resource and exploration target estimates that are not Joint Ore Reserves Committee ("JORC") or 43-101 compliant. The KZK resource estimation presented is based on a study completed in 1995. The Company has taken reasonable care that the resource estimations stated in the Presentation are accurate to the best of the directors' knowledge.

This Presentation contains forward-looking statements, which are based on BMC's current expectations and assumptions and involve known and unknown risks and uncertainties that could cause actual results, performance or events to differ materially from those expressed or implied in such statements. It is believed that the expectations reflected in these statements are reasonable, but they may be affected by a number of variables, which could cause actual results or trends to differ materially. Each forward-looking statement speaks only as of the date of the particular statement. Except as required by law, the Company disclaims any obligation or undertaking to release publicly any updates or revisions to any forward-looking statements contained herein to reflect any change in the Company's expectations with regard thereto or any change in events, conditions or circumstances on which any such statement is based.

In this presentation, "the Company" and "BMC" refer to BMC (UK) Limited and/or its subsidiaries, unless otherwise indicated or the context otherwise requires.

BMC Minerals

Kudz Ze Kayah Project 2015-2016

2015 Exploration

- 49 person camp construction in early July.
- 4 drill rigs on site (2 heli-rigs).
- Drilled 24,500 meters in 135 holes – mix of resource and hydrogeological related drilling.



2015 Exploration *(continued)*

- Airborne surveys (~600 km of line)
- Ground-based gravity survey (~100 km of line)
- Surveys of tote road and drill locations
- Down hole Electromagnetic Surveys
- LIDAR surveys
- ~23,000 m of historical drill core re-logged



2015 Environmental Baseline Studies

Climate and Air Quality



Surface Water Quality and Quantity



2015 Environmental Baseline Studies *(continued)*

Groundwater Quality and Flow



Aquatic Ecosystems and Resources



Terrain and Soils



Vegetation Cover and Composition



2015 Environmental Baseline Studies *(Continued)*

2015 Environmental Baseline Studies *(Continued)*

Wildlife and Wildlife Habitat



Heritage Resources



Community Participation

RRDC Involvement

- As of Nov 1st, 2015
- 821+ days worked
- \$205,152+ wages paid
- \$525,395 spent at RRDC suppliers
- \$525,426 + spent on RRDC contractors
- One full time employee (Gatekeeper and Community Facilitator)



Community Participation *(continued)*

Community Dinner & Presentation



- Held in early April
- Approximately 70 people attended

Community BBQ



- Held in mid October
- Approximately 100 people attended

Plans For Winter-2015



- Evaluation of this years exploration program and planning of 2016 Field Season
- Working towards a Pre-Feasibility in 1st Quarter 2016
- Trade-off Studies
- Preliminary designs for Tailings Facility
- Closure concepts
- Open pit design work
- Underground design work
- Metallurgical test work
- Continued environmental studies

2016 Exploration

Kudz Ze Kayah

Diamond Drilling

Ground Geophysics

Geological Mapping

Pelly Claims

Diamond Drilling

Airborne Geophysics

Ground Geophysics

Geological Mapping

2016 Environmental Program

- Aquatics studies for existing water licence
- Ongoing surface and groundwater sampling
- Ongoing seasonal wildlife Studies
- Traditional Knowledge Study (by RRDC)
- Prepare Project Proposal



Questions?





Presentation for RRDC Elders Sept
27th 2016





Presentation for RRDC Elders

Part 1: Who we are and what have we been doing so far?





BMC Minerals – Who are we?

- BMC purchased the Kudz Ze Kayah project in January 2015.
- BMC is a medium sized private company that specialises in exploring mineral deposits and developing good ones into successful mines;
- Over the last 30 years the managers have developed an international reputation for responsible and ethical behaviour and have been involved in the successful development of 6 mines into production;
- BMC has solid financial backing from an international resource fund;
- BMC has strong policies on local involvement and positive legacies for our projects.



We are proud to have been building a strong First Nation relationship

- BMC established relationship with RRDC BEFORE purchasing the project;
- Exploration Memorandum of Understanding with Kaska Nation;
- Socio-Economic Participation Agreement in place to enhance local benefits and ensure Kaska participation;
- Contracts preferentially awarded to Kaska and Yukon businesses;
- Over 70% of current major contracts are with businesses associated with Kaska and other First Nations.
- *All major contracts have local employment and training clauses*





We have stood by our commitment to use local contractors and Kaska business partners





We've supported Kaska and First Nations businesses

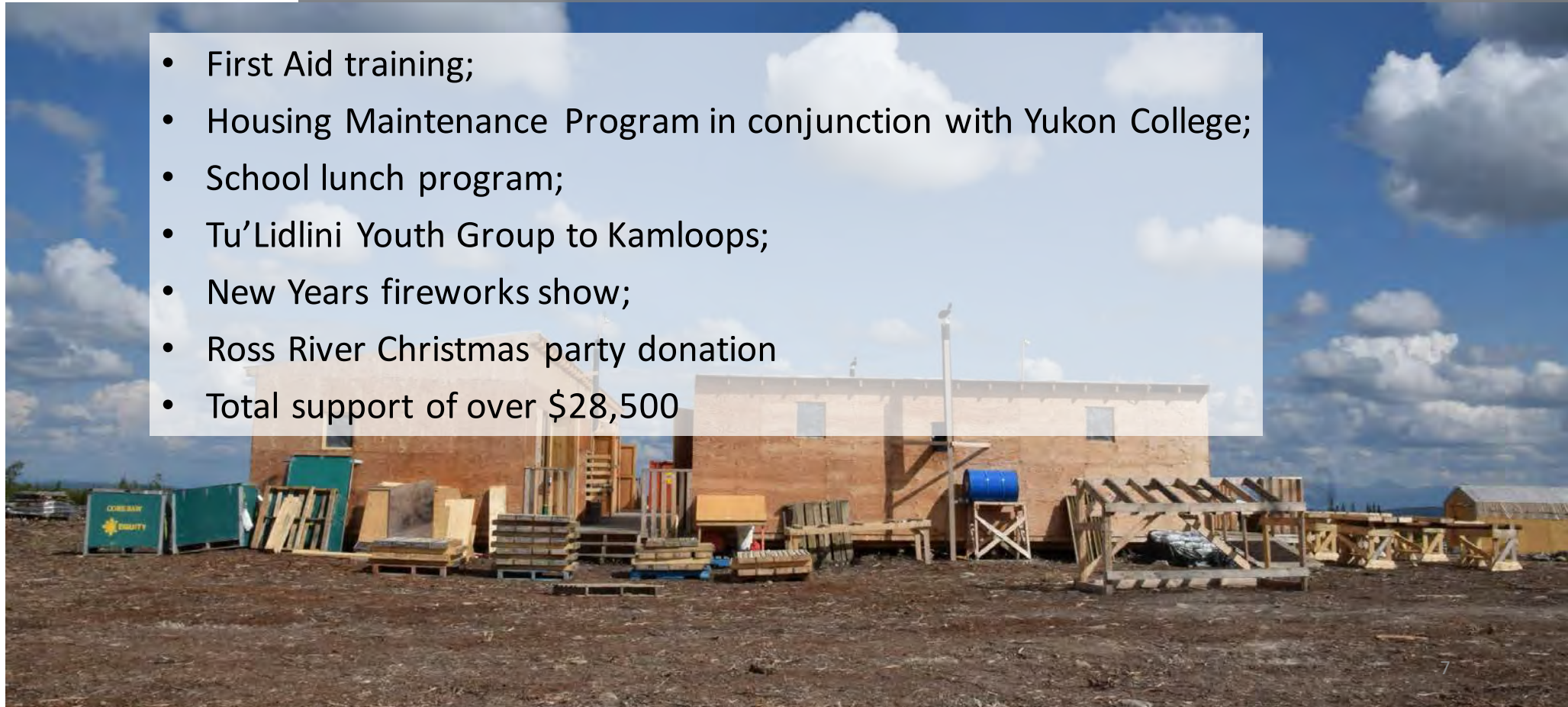
- Ross River General Store – Supplies and Lumber.
- Tu Lidlini – Fuel, Propane and Logistics support.
- Moon Construction – Equipment Hire and Road Maintenance contract.
- McCleod Contracting – Equipment Hire & Drill Pad Construction contract.
- New Age Drilling – Major drilling contractor.
- Total Expended on Kaska suppliers in 2015 was \$1.53 Million.





We've supported training & community programs and events

- First Aid training;
- Housing Maintenance Program in conjunction with Yukon College;
- School lunch program;
- Tu'Lidlini Youth Group to Kamloops;
- New Years fireworks show;
- Ross River Christmas party donation
- Total support of over \$28,500





We're encouraging the next generation of managers



We are motivated to ensure Kaska children gain technical and business skills to be qualified to be potential future managers.





We're encouraging the next generation of managers

- We have implemented a Mentor Program to assist Kaska to gain and to keep employment with the company.
- We have also initiated a Kaska Education Scholarship Program with RRDC, committing to a 3 year program with a total value of \$75,000.





From small beginnings





Using lumber supplied from the Ross River store ...



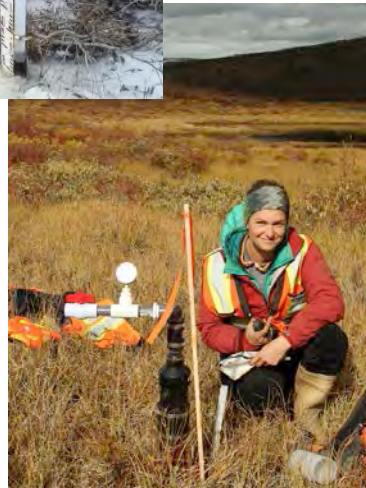
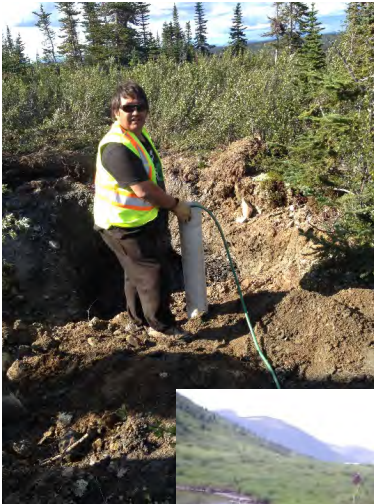


We completed the Kudz Ze Kayah camp in July 2015



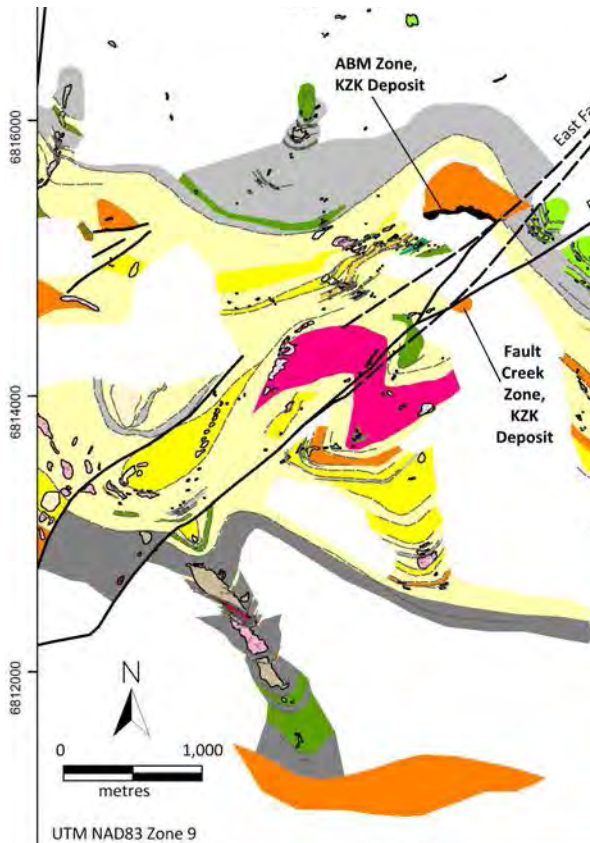


We started Environmental Baseline Studies in 2015
and continued them through 2016



- Climate
- Fish and Aquatic Ecosystems
- Vegetation, Terrain, Soils
- Wildlife and Wildlife Habitat
- Surface and Groundwater
- Heritage Resources

We began Preliminary Engineering studies in 2016



- Process of full consultation implemented from early 2015;
- All exploration permit applications have been reviewed by RRDC prior to submission to YTG: this policy will continue for all mining permits;
- Targeting project life over 10 years;
- Processing test work complete, secondary work underway
- Test work focused on minimisation of chemicals but maximisation of mineral recovery;
- Standard flotation plant with dry stacked tailings (no wet dam);
- Mine permitting and construction process to take +/- 5 years;
- Open pit and underground mining;
- Transport of concentrate likely to be through Stewart Port;
- Direct employment likely to be over 300 people.



KZK drilling completed, future drilling more regional

- ~40,000m of drilling at KZK 2015/16;
- Decision on 2017 targets yet to be made but consideration for Pelly, Wolf and GP4F;
- Progressive rehabilitation of exploration disturbance;
- 2017 drilling likely to be less than 5,000m.





Our commitment to you

We promise we will continue to:

- Respect your people, be sensitive towards your culture, and hear what you say;
- Respect and care for the land, the water, the fish and the wildlife;
- Learn about your heritage, and embrace your Traditional Knowledge to help us understand what's important;
- Work with you so that when mining is done, we will leave a legacy we can all be proud of;
- Provide opportunities for local people (with a special focus on young people) and for local businesses;
- Provide training, mentoring and incentives towards increased opportunities for employment at management level.



Part 2: Where would we like to go from here?

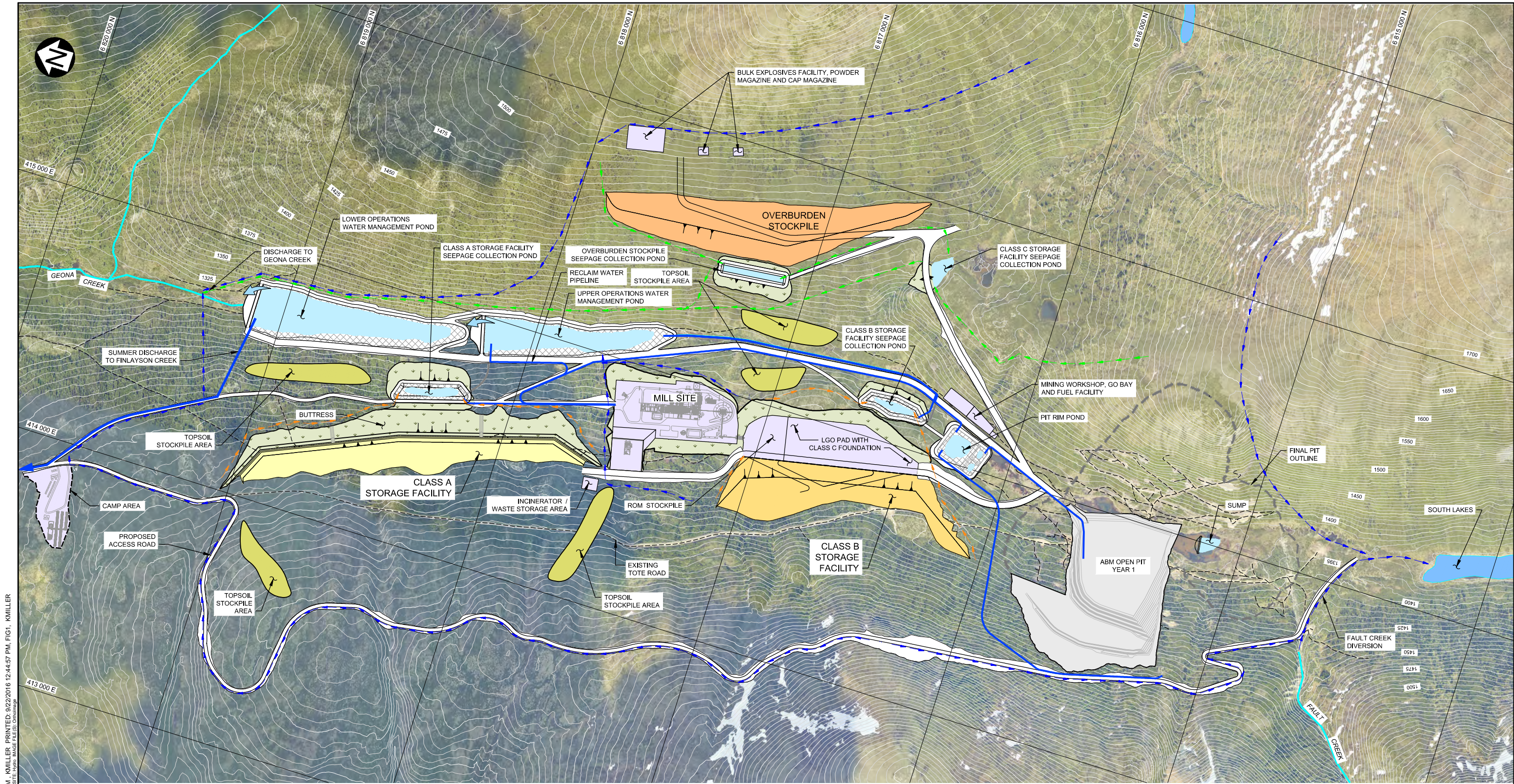
Video Presentation Part 2.

<https://drive.google.com/file/d/0B4xPwefU-k15QnZnMW5YV09RU2s/view?usp=sharing>





*dry stack slide (s) to talk to then back to
video*



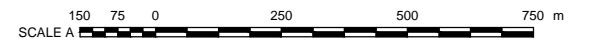
SAVED: M:\1101\0064002\AA\cadd\FIGS\B28_9\222016 12:02:48 PM - KWILLER PRINTED: 9/22/2016 12:44:57 PM, FIG1, KWILLER
 XREF FILE(S): V:\DPO\CONT-5.dwg, Civil Facilities, C:\Road, C:\PIT, V:\TRAL\HYDRO, MILL SITE, hydro, IMAGE FILE(S): Otr\img

- NOTES:**
- COORDINATE GRID IS UTM NAD 83 9N.
 - TOPOGRAPHIC DETAIL BASED ON INFORMATION PROVIDED BY BMC 02 FEB' 2016.
 - CONTOUR INTERVAL IS 5 METRES.
 - ALL ELEVATIONS ARE IN METRES, UNLESS NOTED OTHERWISE.

LEGEND:

	WATER		RIVER / STREAM / DRAINAGE
	CLASS A STORAGE FACILITY		PROPOSED ROAD
	CLASS B & C STORAGE FACILITIES		HISTORICAL ACCESS ROAD
	OVERBURDEN STOCKPILE		DIVERSION DITCH (NON CONTACT)
	TOPSOIL STOCKPILE AREA		DIVERSION DITCH (CONTACT CLASS A & B)
	OPEN PIT		DIVERSION DITCH (CONTACT CLASS C)
	RECLAIMED / PROGRESSIVE CLOSURE		DEWATERING PIPELINE
	FACILITIES BY OTHERS		

PLAN
SCALE A

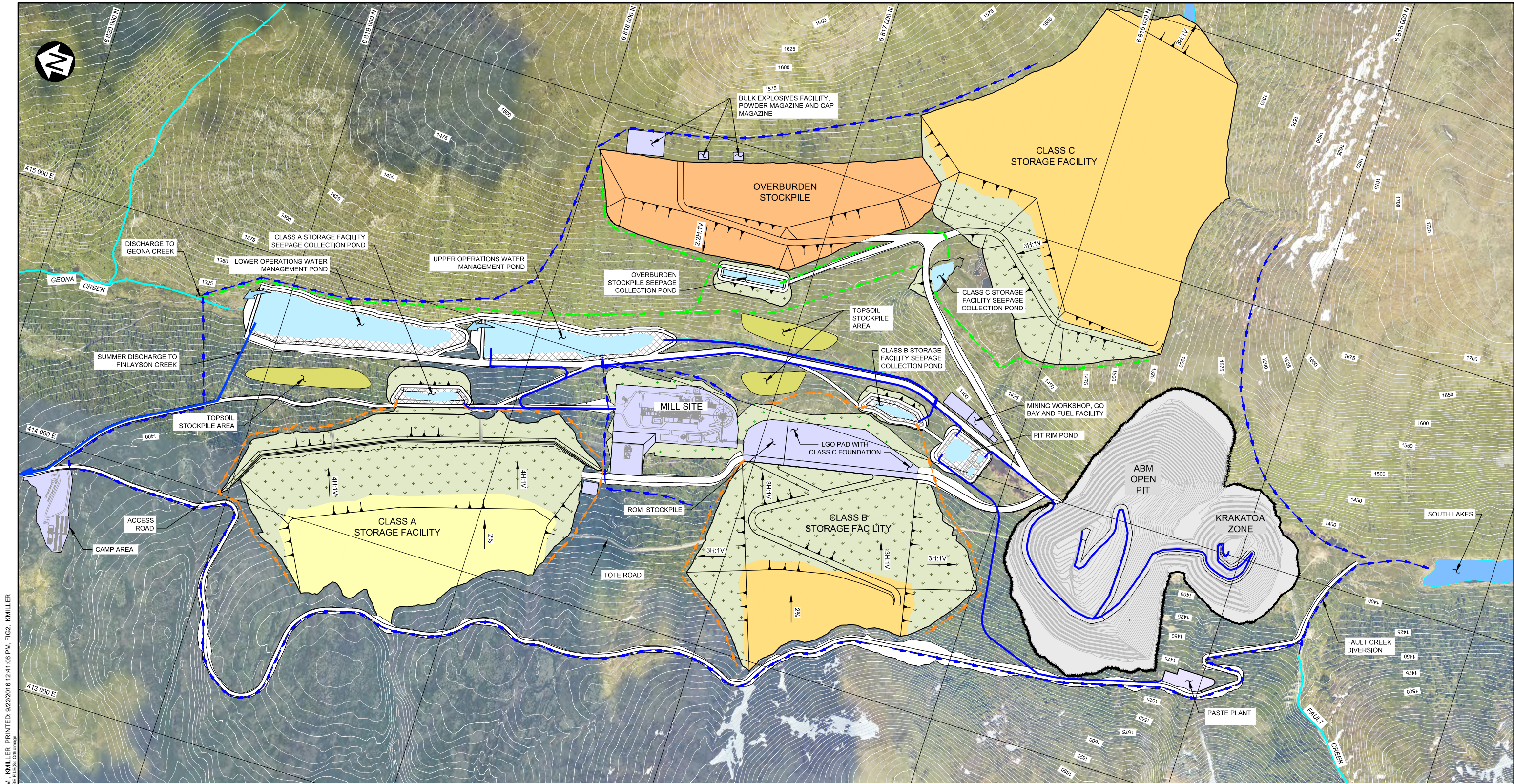


DRAFT

PRELIMINARY FOR DISCUSSION ONLY

REV	DATE	DESCRIPTION	DESIGNED	DRAWN	REVIEWED
B	22SEPT16	PRELIMINARY FOR DISCUSSION ONLY - DRAFT	MAP	KJM	LJG
A	20SEPT16	PRELIMINARY FOR DISCUSSION ONLY - DRAFT	MAP	KJM	LJG

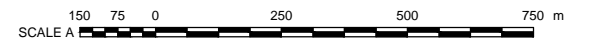
BMC MINERALS (NO.1) LTD.	
KUDZE ZE KAYAH PROJECT	
GENERAL ARRANGEMENT YEAR 1	
Knight Piésold CONSULTING	P/A NO. VA101-640/02
FIGURE 1	REF NO. REV B



- NOTES:**
1. COORDINATE GRID IS UTM NAD 83 9N.
 2. TOPOGRAPHIC DETAIL BASED ON INFORMATION PROVIDED BY BMC FEBRUARY 02, 2016.
 3. PIT SHELLS PROVIDED BY BMC MINERALS (NO.1) LTD. APRIL 8, 2016.
 4. CONTOUR INTERVAL IS 5 METRES.
 5. ALL ELEVATIONS ARE IN METRES, UNLESS NOTED OTHERWISE.
 6. CONCURRENT RECLAMATION OF CLASS A STORAGE FACILITY NOT SHOWN.
 7. CULVERTS ARE REQUIRED WHERE DITCHES CROSS ROADS.

- LEGEND:**
- WATER
 - CLASS A STORAGE FACILITY
 - CLASS B & C STORAGE FACILITIES
 - OVERBURDEN STOCKPILE
 - TOPSOIL STOCKPILE AREA
 - OPEN PIT
 - RECLAIMED / PROGRESSIVE CLOSURE
 - FACILITIES BY OTHERS
 - RIVER / STREAM / DRAINAGE
 - PROPOSED ROAD
 - DIVERSION DITCH (NON CONTACT)
 - DIVERSION DITCH (CONTACT CLASS A & B)
 - DIVERSION DITCH (CONTACT CLASS C)
 - DEWATERING PIPELINE

PLAN
SCALE A



DRAFT

PRELIMINARY FOR DISCUSSION ONLY

SAVED: M:\11010064002\AA\cadd\FIGS\B29_9\202016 12:15:12 PM - KWILLER PRINTED: 9/22/2016 12:41:06 PM, FIG2, KWILLER
 XREF FILES: V:\DPO\CONT-5.dwg, Civil Facilities, C:\Road, H:\INFO\MILL SITE IMAGE FILES\

REV	DATE	DESCRIPTION	DESIGNED	DRAWN	REVIEWED
B	22SEPT16	PRELIMINARY FOR DISCUSSION ONLY - DRAFT	MAP	KJM	LJG
A	20SEPT16	PRELIMINARY FOR DISCUSSION ONLY - DRAFT	MAP	KJM	LJG

BMC MINERALS (NO.1) LTD.					
KUDZE ZE KAYAH PROJECT					
GENERAL ARRANGEMENT YEAR 10					
	<table border="1" style="width: 100%;"> <tr> <td style="font-size: small;">P/A NO.</td> <td style="font-size: small;">REF. NO.</td> </tr> <tr> <td style="font-size: small;">VA101-640/02</td> <td style="font-size: small;">-</td> </tr> </table>	P/A NO.	REF. NO.	VA101-640/02	-
P/A NO.	REF. NO.				
VA101-640/02	-				
FIGURE 2					
REV	B				

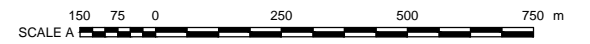


SAVED: M:\11010064002\AA\cadd\FIGS\B30_9/22/2016 11:06:57 AM - KWILLER PRINTED: 9/22/2016 12:49:01 PM, FIG3, KWILLER
 XREF FILE(S): V:\DPO\CONT-5.dwg Civil Facilities; H:\civ\H1010064002\AA\cadd\FIGS\B30_9/22/2016 11:06:57 AM - KWILLER
 IMAGE FILE(S): Orthophoto

- NOTES:**
1. COORDINATE GRID IS UTM NAD 83 9N.
 2. TOPOGRAPHIC DETAIL BASED ON INFORMATION PROVIDED BY BC FEBRUARY 02, 2016.
 3. PIT SHELLS PROVIDED BY BC MINERALS (NO.1) LTD. APRIL 8, 2016.
 4. CONTOUR INTERVAL IS 5 METRES.
 5. ALL ELEVATIONS ARE IN METRES, UNLESS NOTED OTHERWISE.

- LEGEND:**
- WATER
 - STORAGE FACILITY - RECLAIMED WITH CLASS C MATERIAL AND REVEGETATED
 - OPEN PIT
 - RIVER / STREAM / DRAINAGE
 - ACCESS ROAD
 - DIVERSION DITCH (CLOSURE)
 - WATER TREATMENT PIPELINE

PLAN
SCALE A

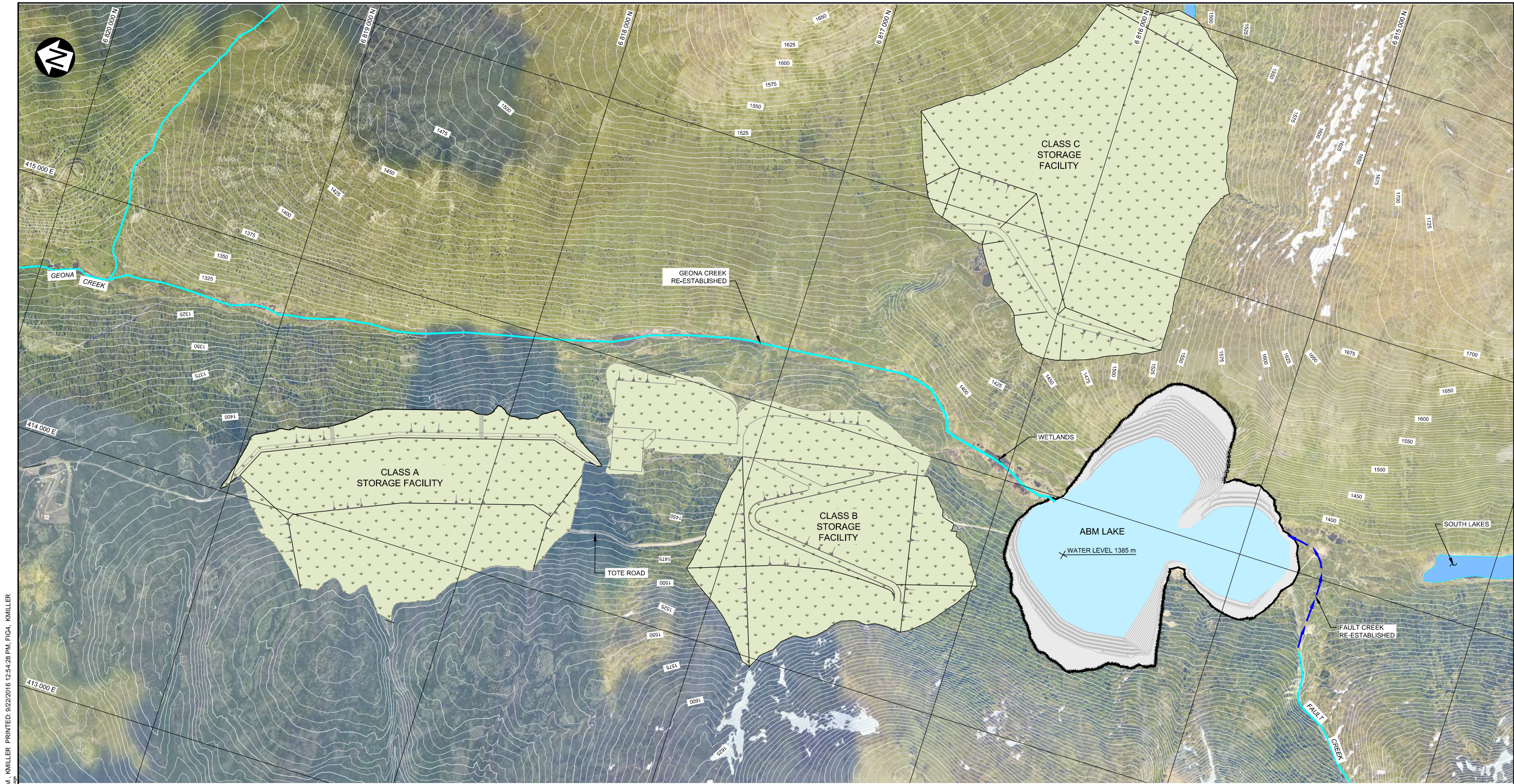


DRAFT

PRELIMINARY FOR DISCUSSION ONLY

REV	DATE	DESCRIPTION	DESIGNED	DRAWN	REVIEWED
B	22SEPT16	PRELIMINARY FOR DISCUSSION ONLY - DRAFT	MAP	KJM	LJG
A	20SEPT16	PRELIMINARY FOR DISCUSSION ONLY - DRAFT	MAP	KJM	LJG

BMC MINERALS (NO.1) LTD.	
KUDZ ZE KAYAH PROJECT	
GENERAL ARRANGEMENT CLOSURE	
<i>Knight Piésold</i> CONSULTING	<small>P/A NO.</small> VA101-640/02 <small>REF. NO.</small> FIGURE 3 <small>REV</small> B

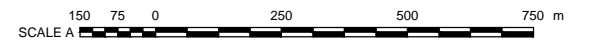


SAVED: M:\11010064002\AA\cadd\FIGS\B31_9/22/2016 12:51:51 PM - KWILLER PRINTED: 9/22/2016 12:54:28 PM, FIG4, KWILLER
 XREF FILE(S): Civil Facilities; Hydro; V:\HYDRO_V\TOPD.CONT-5.dwg IMAGE FILE(S): Orthophoto

- NOTES:**
1. COORDINATE GRID IS UTM NAD 83 9N.
 2. TOPOGRAPHIC DETAIL BASED ON INFORMATION PROVIDED BY BC FEBRUARY 02, 2016.
 3. PIT SHELLS PROVIDED BY BC MINERALS (NO.1) LTD. APRIL 8, 2016.
 4. CONTOUR INTERVAL IS 5 METRES.
 5. ALL ELEVATIONS ARE IN METRES, UNLESS NOTED OTHERWISE.

- LEGEND:**
- WATER
 - STORAGE FACILITY - RECLAIMED WITH CLASS C MATERIAL AND REVEGETATED
 - OPEN PIT
 - RIVER / STREAM / DRAINAGE

PLAN
SCALE A

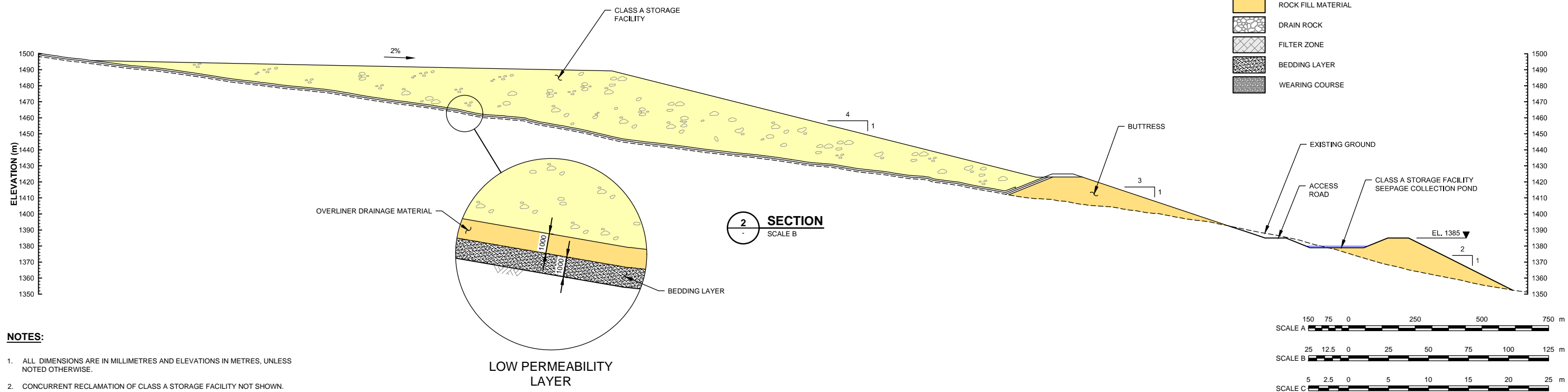
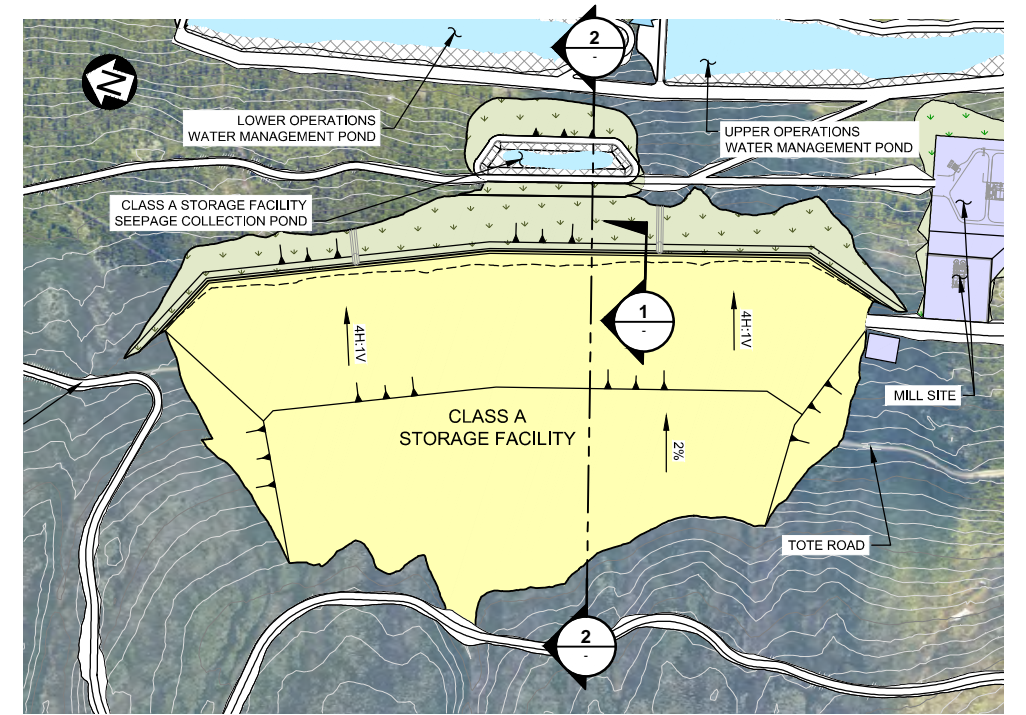
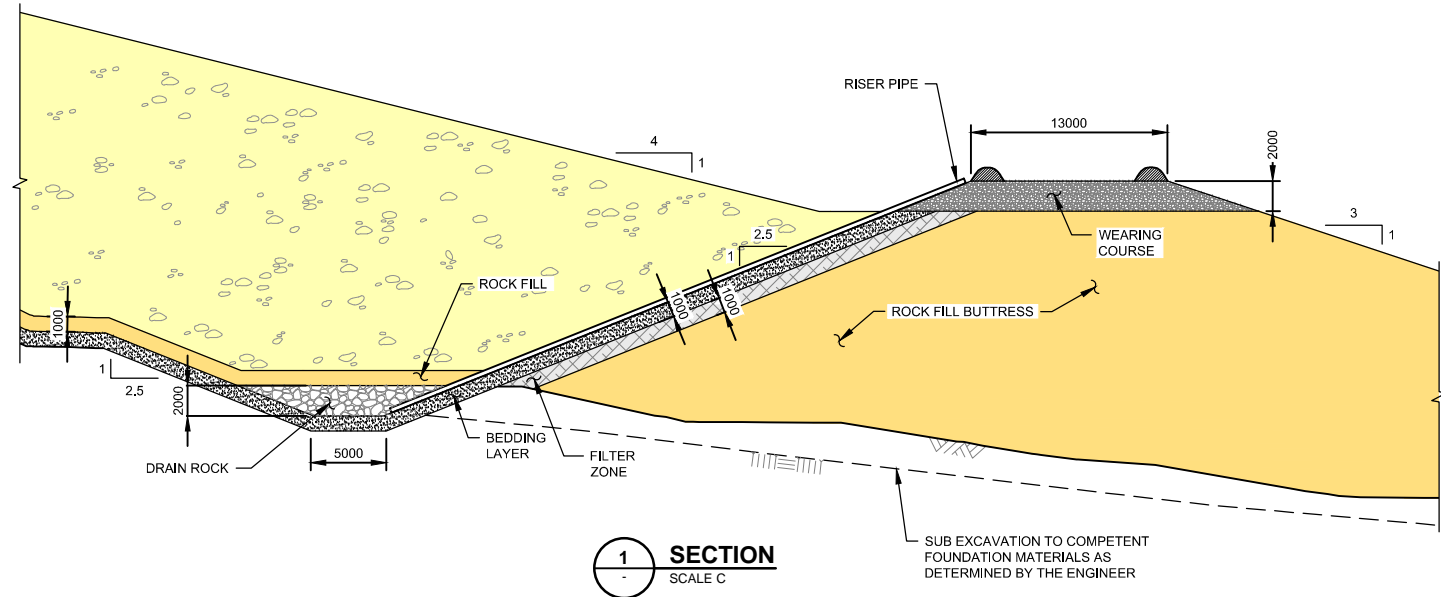


DRAFT

PRELIMINARY FOR DISCUSSION ONLY

BMC MINERALS (NO.1) LTD.	
KUDZ ZE KAYAH PROJECT	
GENERAL ARRANGEMENT POST CLOSURE	
<i>Knight Piésold</i> CONSULTING	<small>P/A NO.</small> VA101-640/02 <small>REF NO.</small> FIGURE 4 <small>REV</small> B

REV	DATE	DESCRIPTION	DESIGNED	DRAWN	REVIEWED
B	22SEPT16	PRELIMINARY FOR DISCUSSION ONLY - DRAFT	MAP	KJM	LJG
A	20SEPT16	PRELIMINARY FOR DISCUSSION ONLY - DRAFT	MAP	KJM	LJG



- NOTES:**
- ALL DIMENSIONS ARE IN MILLIMETRES AND ELEVATIONS IN METRES, UNLESS NOTED OTHERWISE.
 - CONCURRENT RECLAMATION OF CLASS A STORAGE FACILITY NOT SHOWN.

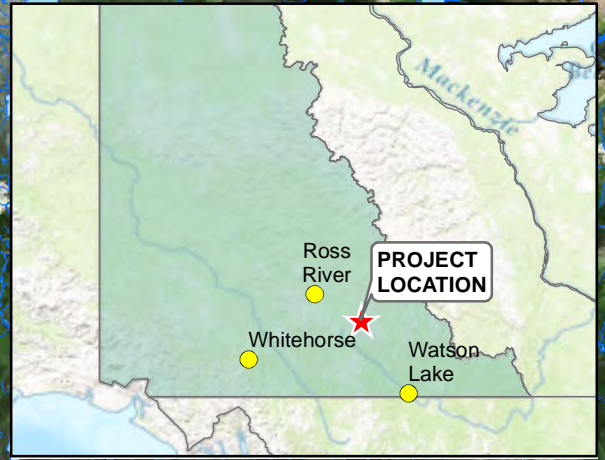
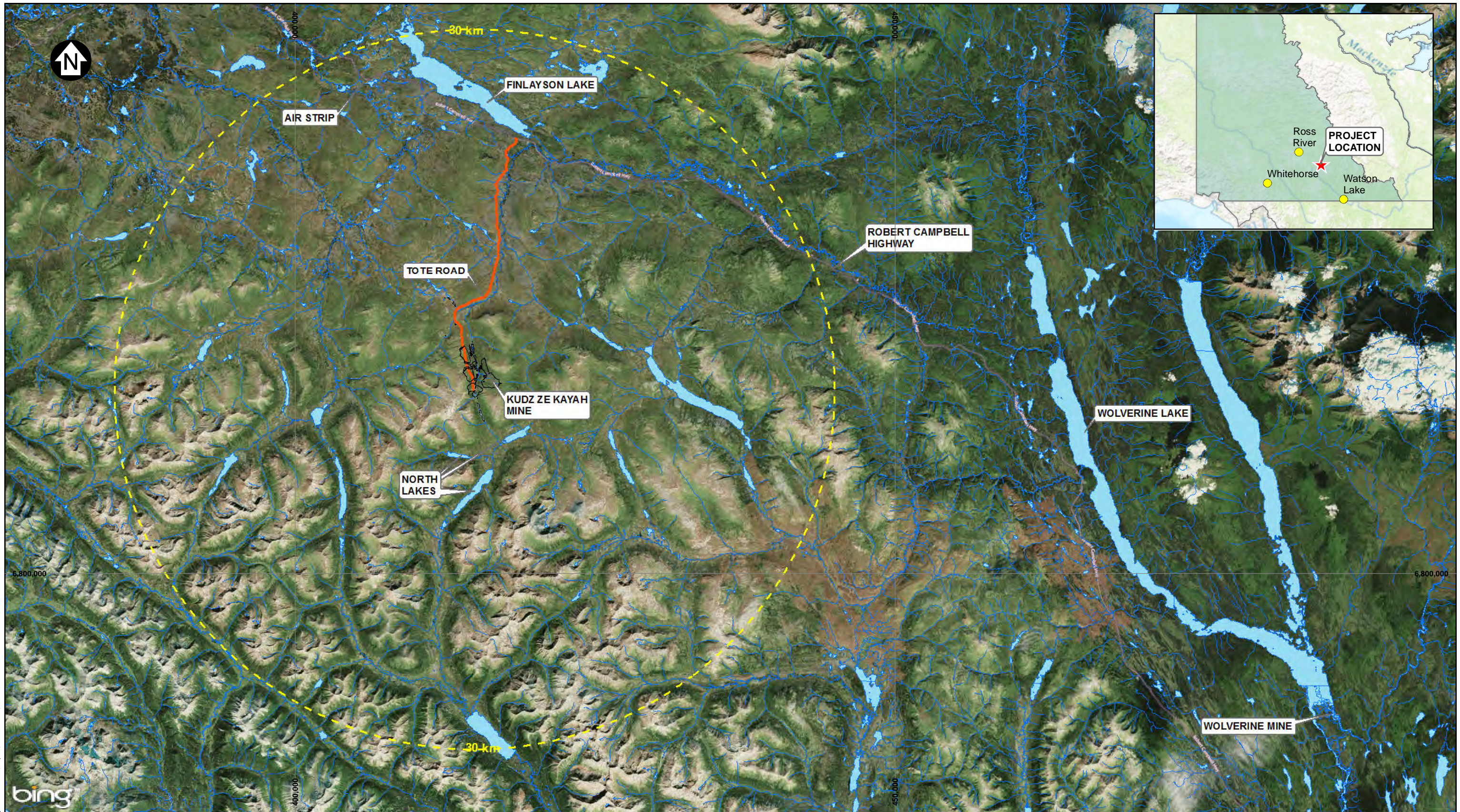
DRAFT

PRELIMINARY FOR DISCUSSION ONLY

SAVED: M:\11010064002\AA\cad\FIGS\B16_9/22/2016 9:59:38 AM - KMILLER PRINTED: 9/22/2016 12:58:44 PM - FIG2 - KMILLER
 XREF FILE(S): V:\DPO\CONT-5.dwg; Civil Facilities; C:\Road; Hubs; V:\HROD; ML\SITE IMAGE FILE(S): D:\Image

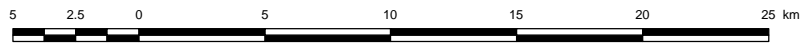
REV	DATE	DESCRIPTION	DESIGNED	DRAWN	REVIEWED
B	22SEPT16	PRELIMINARY FOR DISCUSSION ONLY - DRAFT	MAP	KJM	LJG
A	20SEPT16	PRELIMINARY FOR DISCUSSION ONLY - DRAFT	MAP	KJM	LJG

BMC MINERALS (NO.1) LTD.		
KUDZ ZE KAYAH PROJECT		
CLASS A CROSS SECTION YEAR 10		
Knight Piésold CONSULTING	P/A NO. VA101-640/02	REF. NO. -
	FIGURE 5	
		REV B



LEGEND:

- RIVER
- LAKE
- ROAD
- 30 KM AREA
- FACILITIES



NOTES:

1. BASE MAP: BING ONLINE AND GEO YUKON DATA.
2. COORDINATE GRID IS IN METRES. COORDINATE SYSTEM: NAD 1983 UTM ZONE 9N.
3. THIS FIGURE IS PRODUCED AT A NOMINAL SCALE OF 1:300,000 FOR 11x17 (TABLOID) PAPER. ACTUAL SCALE MAY DIFFER ACCORDING TO CHANGES IN PRINTER SETTINGS OR PRINTED PAPER SIZE.

DRAFT

REV	DATE	DESCRIPTION	DESIGNED	DRAWN	REVIEWED
B	22SEP16	ISSUED FOR INFORMATION	MAP	KK	-

BMC MINERALS (NO.1) LTD

KUDZ ZE KAYAH PROJECT

PROJECT LOCATION MAP

Knight Piésold
CONSULTING

P/A NO. VAxxx-xx/x	REF NO. -
FIGURE 6	
REV	B

SAVED: M:\101\0064\02\A\GIS\Figs\Fig6_ProjectLocation.mxd, Sep 22, 2016 1:16 PM, k.krauszova