

From: Kelli Bergh
To: cao@watsonlake.ca
Cc: (email addresses redacted)
Subject: BMC Minerals Kudz Ze Kayah Project
Date: December-28-15 10:11:35 AM

Hello David

My name is Kelli Bergh and I work for a company called BMC Minerals. We have the Kudz Ze Kayah Mine Project which is located approximately 260 km northwest of Watson Lake. The project has a long history in the Yukon. BMC acquired the property in January 2015 from Teck Resources. KZK is a prefeasibility study (PFS) zinc-copper-gold-silver-lead development. We met with Chief Morris and Cindy Porter of LFN in the spring of 2015 to discuss the project and our exploration plans for the year. We are now ready to engage the entire Watson Lake community regarding our plans. We plan to hold a community dinner and meeting on January 11th to present our project and our plans for 2016. The meeting will be at the Community Hall from 5 to 8 pm.

Would your mayor and council members be available that afternoon for us to meet? We would like to provide you with the following information:

- BMC Corporate Overview
- Summary of 2015 Project Activities (Exploration, Environmental, Community)
- Anticipated Project Timelines
- Anticipated 2016 Project Activities
- Overview of our Engagement Plan

I would have sent you this email earlier but your receptionist indicated that you were away until today.

I look forward to hearing from you.

Sincerely,
Kelli Bergh BSc, MET, RP Bio
Manager of Environment and Community Engagement
778-233-7058

From: Ingrid Combs
To: ["Kelli Bergh"](#)
Subject: RE: BMC Minerals - Community Meeting advertisement
Date: December-31-15 8:31:49 AM
Attachments: [image001.gif](#)

Hi Kelli,

Thank you for your email, we have shortened the content as it came out to 46 seconds.

This is what fits into 30 seconds... let me know if that is acceptable.....thank you...

BMC Minerals will be holding a community meeting on January 13th from 7 pm to 9 pm at the Yukon Inn.

This presentation by BMC Minerals describes the proposed Kudz Ze Kayah Mine Project, followed by a question and answer period.

The project is a proposed open pit zinc copper mine, located approximately 110 km southeast of Ross River, and 24 km south of Finlayson Lake.

For additional information regarding the project or the upcoming meeting, please contact Kelli Bergh at kellib@bmcminerals.com or 778-233-7058.

If we star on January 4th and finish on January 13th , having 3 ads a day for 10 days will give you 30 ads at \$20.00/ per ad for the total of \$600.00+gst

I need to know where is this order being billed to, also because the company does not have an account with us it will needs to be prepaid before it goes on air.

Please let me know if you have any questions.

Thanks.

Ingrid Combs
Sales Coordinator
867-668-6100 ext. 222

rush logo



From: Kelli Bergh [mailto:kdbergh@gmail.com]
Sent: December-30-15 1:36 PM
To: ingrid@ckrw.com
Subject: BMC Minerals - Community Meeting advertisement

Hi Ingrid

As discussed yesterday, attached is the draft radio add.

Can you please modify it as you see fit and let me know how much it will cost to run from the 1st to the 12th.

Thanks,

Kelli

778-233-7058

BMC Minerals

INVITATION TO PARTICIPATE IN COMMUNITY ENGAGEMENT

Kudz Ze Kayah Mine Project

January 11th to 14th, 2016

BMC Minerals is conducting community engagement regarding the proposed Kudz Ze Kayah Mine Project. As part of this engagement, BMC Minerals will present information about the company, the history of the project, exploration work conducted in 2015 and our plans for 2016.

The Kudz Ze Kayah Project is located approximately 110 km southeast of Ross River and 24 km south west of the Robert Campbell Highway near Finlayson Lake, Yukon.

An Initial Environmental Evaluation was undertaken for the project in the 1990's and a Type A Water License was subsequently issued. The proposed KZK mine, although designed with leading edge science and technology of the day, was nevertheless assessed and permitted under an earlier regulatory regime. BMC intends to improve the design, mitigation and management strategies for the project as we prepare to enter YESAA in 2016. Input from the community will inform these designs and strategies.

You can provide feedback and learn more about the project by:

- Attending a community meeting (see schedule below)
- **Calling:** 778-233-7058
- Providing a **written submission** through:

Fax: 778-379-9263 | **Email:** kellib@bmcminerals.com | **Mail:** 530 - 1130 West Pender St. Vancouver, BC V6E 4A4

Community Engagement Schedule:

Date	Event Type	Time	Location
Monday, January 11th	Dinner & Presentation	4 pm – 6 pm	Faro - Recreation Centre
Tuesday, January 12th	Dinner & Presentation	5 pm – 8 pm	Ross River – School
Wednesday, January 13th	Dessert & Presentation	7 pm – 9 pm	Whitehorse – Yukon Inn
Thursday, January 14th	Dinner & Presentation	5 pm – 8 pm	Watson Lake – Community Centre

BMC Minerals

Community Dinner and Presentation

- BMC Minerals will be hosting a community dinner on January 11th in Faro at the Rec Centre followed by an update on our work in 2015 on the Kudz Ze Kayah Project
- Dinner will start at 4 pm and the presentation at 5 pm

For additional information please contact Kelli Bergh at kdbergh@gmail.com or 778-233-7058

BMC Minerals

Community Dinner and Presentation

- BMC Minerals will be hosting a community dinner on January 12th at the School (gathering room) followed by an update on our work in 2015 and our plans for 2016 for the Kudz Ze Kayah Project
- Dinner will start at 5 pm and the presentation at 6 pm

For additional information please contact Kelli Bergh at kdbergh@gmail.com or 778-233-7058

BMC Minerals

Community Dinner and Presentation

- BMC Minerals will be hosting a community dinner on January 14th in Watson Lake at the Community Center followed by an update on our work in 2015 on the Kudz Ze Kayah Project
- Dinner will start at 5 pm and the presentation at 6 pm

For additional information please contact Kelli Bergh at kdbergh@gmail.com or 778-233-7058

Community Presentation

January 2016

Presentation Objectives

- Provide overview of BMC Minerals and our commitment to community engagement
- Provide general overview of history of the project
- Provide our preliminary project schedule
- Summarize 2015 exploration and environmental progress
- Provide overview of our plans for 2016

Introduction

Strong Partnership

- BMC Minerals Group (“BMC”) was founded in 2014 through a partnership between its highly experienced management team and Global Natural Resource Investments (“GNRI”)

Attractive Focus

- Focused on the development of base metals projects (primarily zinc, copper, lead)
- Initial focus is on Western Canada.

Defined Business Plan

- Specifically focused on projects which are post-resource definition / pre-feasibility study (“PFS”) stage.
- Working within the local community to complete environmental other baseline studies, completion of feasibility and permitting requirements and if economic, bringing the mines into production, thereby providing long term value to both the company and the community.

Cornerstone Asset

- BMC acquired Kudz Ze Kayah (“KZK”) in January 2015 from TECK Resources.
- KZK is a PFS stage zinc-copper-gold-silver-lead development asset with resource upside (KZK is a VMS-type deposit).

Funding

- Shareholders have provided sufficient initial funds to enact the business plan.

BMC Senior Management Team

BMC management is very experienced and have previously developed a number of mines into production



Gary Comb (*Executive Chairman*)

- ▶ A Mechanical Engineer, Gary has 30 years mining industry experience in Australia and has extensive mine operations and contract mining experience
-



Scott Donaldson (*CEO*)

- ▶ A Mining Engineer with 25 years experience mining in Australia and New Zealand (open-cut and underground mining) in various base metals, gold, coal and chromite. Has extensive mine construction, operations and contract mining experience.
-



Neil Martin (*Executive Director*)

- ▶ 25 years experience in mineral exploration across base metals, gold, iron ore and coal in Australia and Asia, and holds a PhD in Economic Geology focussed on VMS deposit analysis and evaluation
-

Community / Stakeholders Relations – What we believe in!

BMC believes that an open and mutually beneficial relationship between the Company, Local Communities and other stakeholders is of paramount importance and is a first priority in project development

BMC KEY COMMITMENTS...

- *Respect local issues and culture*
- *Respect the environment*
- *Listen as a key component of consultation*
- *Promote a positive legacy by working together with local community (leave a legacy we can be proud of and that the local community is happy with)*
- *Promote enhanced business opportunities and local involvement*
- *Provide training, work skills and increased opportunity for employment at supervisory and management level*
- *Cultural Awareness*

...ACHIEVED BY

- ✓ Managers to lead by example
- ✓ Being a “Good Neighbour”
- ✓ Strong community relationships
- ✓ Establish business alliances, employment and practical training initiatives in the work place
- ✓ Cross cultural awareness, induction, training and education in local Indigenous culture and work-place relationships
- ✓ Project staff to understand local community issues and to take these in to consideration when making decisions
- ✓ Management of heritage issues to be given high priority

KZK - LOCATION

KZK is accessible by road and the asset has good access



KZK Area in 1994 study to be focus of early 2015/16 program



KZK Overview – What we think we know today!

KZK is a Zinc, Copper, Lead deposit, which is BMC's specialty given its experience.

- KZK has been idle since the mid to late 90's when Cominco completed a mining study on a 3,000 tonnes per day open pit operation based around the ABM deposit.
- Undertake full environmental, socio-economic and heritage studies to support the project environmental assessment.
- BMC plans to complete required permitting (including First Nations consultation), drill development targets, and complete a Feasibility Study on KZK.

- BMC will work to expand the resource so as to increase the potential for a longer life mine and greater legacy benefits.
- BMC will work towards constructing and operating the KZK project rather than just acquire mineral claims, but this will require further permitting once the 2015/16 exploration and environmental work is complete.
- Mineralization in the ABM deposit is ~ 13 Mt containing copper, zinc, lead, gold and silver and this area has been the focus of 2015 work.

KZK – Key 2015 Milestones

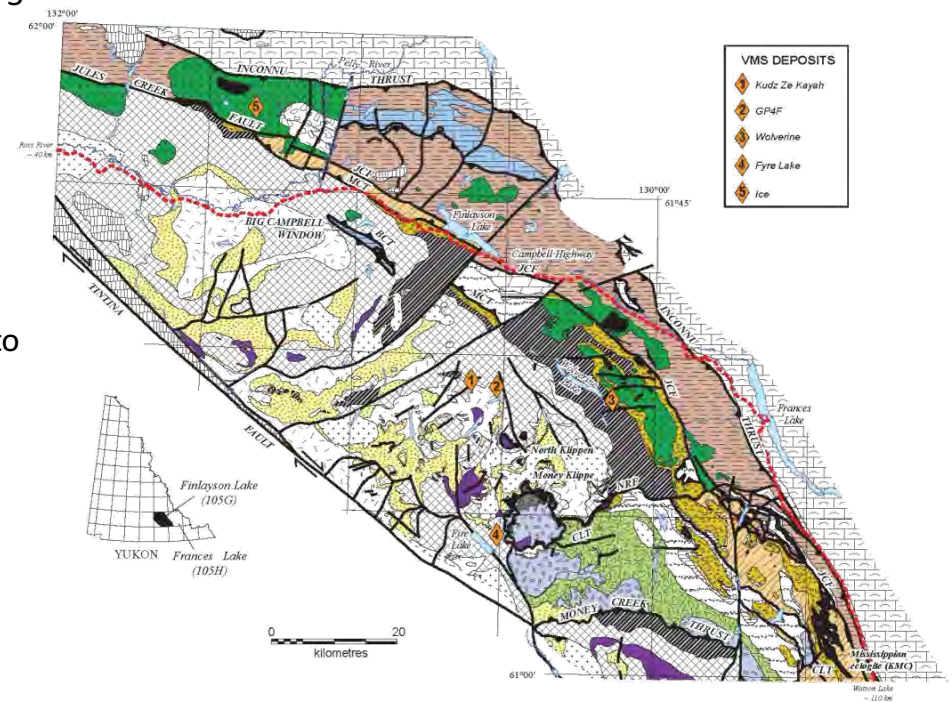
- ✓ Commenced drill program in 2015 (confirming previous resource estimates, testing proximal resource extensions and gaining core for metallurgical testing)
- ✓ Re-logged existing drill core on site
- ✓ Update KZK resource estimate
- ✓ Update historical metallurgical work
- ✓ Began baseline studies (Environmental, Socio-economic, Heritage) for the Environmental Assessment (EA)
- ✓ Worked with Kaska Nation on the implementation of the existing SEPA obligations

KZK POTENTIAL DEVELOPMENT TIMELINE

KZK	2015				2016				2017				2018				2019				2020				2021			
	Q1	Q2	Q3	Q4	Q1	Q2	Q3	Q4	Q1	Q2	Q3	Q4	Q1	Q2	Q3	Q4	Q1	Q2	Q3	Q4	Q1	Q2	Q3	Q4	Q1	Q2	Q3	Q4
Closing																												
Project Planning																												
Baseline Studies for EA																												
Exploration																												
Pre-Feasibility Study																												
Permit Approvals																												
Feasibility Study																												
Construction Decision																												
Construction																												
Ramp Up																												
Steady State Operation																												

KZK - History

- Finlayson VMS District
 - Upper Devonian (~376 Ma) to Permian (~275 Ma) back-arc basin
 - Host to at least 5 significant VMS deposits
- Grassroots Discovery of the ABM Deposit by Cominco in 1994
 - Sparked major staking rush
 - Continuous advanced exploration through to 1998 resulted in:
 - 31,888 m drilled
 - Definition of inferred resources
 - Class A water licence
 - Cominco-Teck merger put project into dormant phase



From Murphy et al. 2006

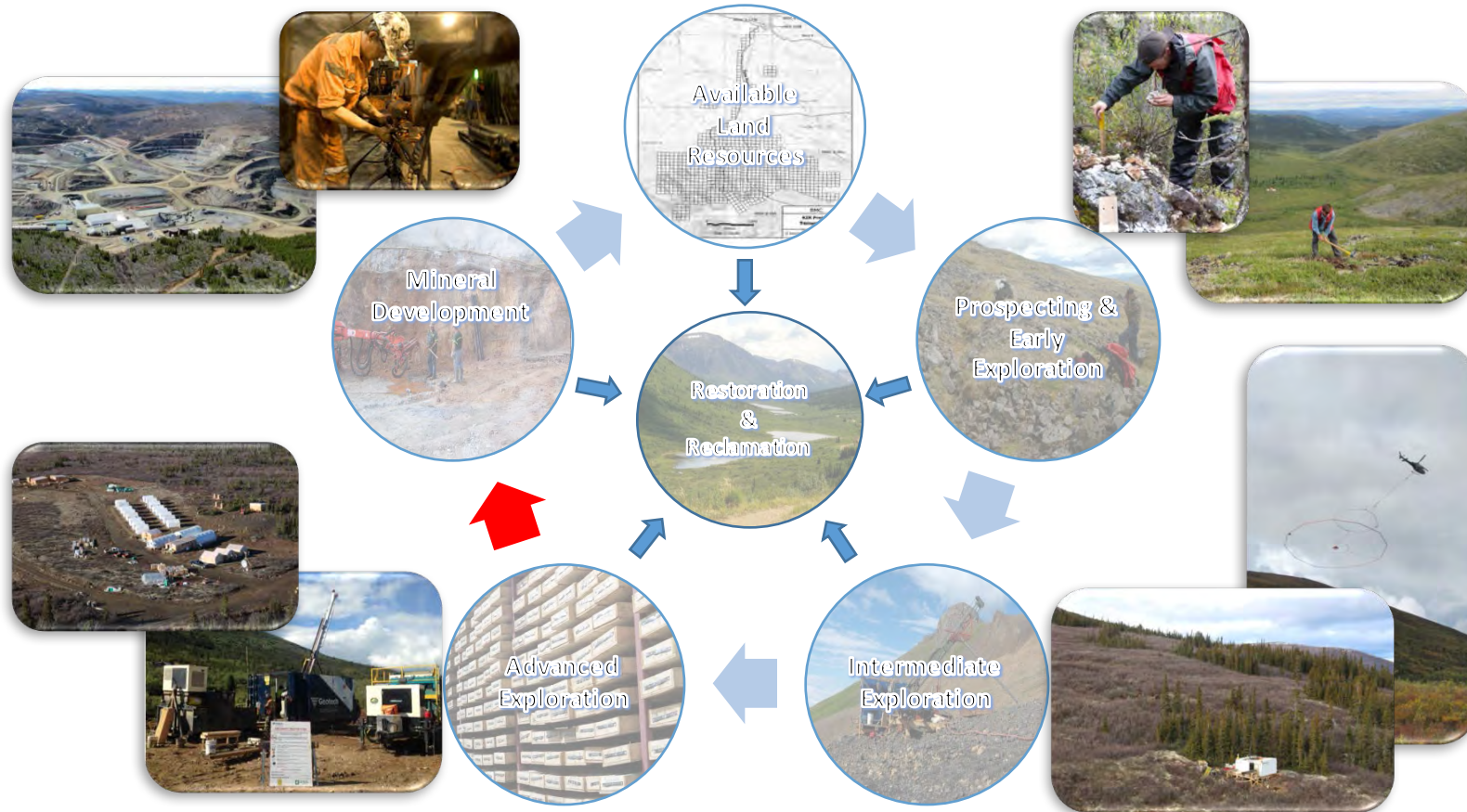
ABM Deposit

Mineralization

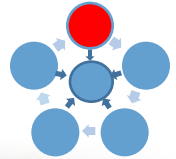
- 700 m x 400 m x 20 m tabular body of massive sulphide
 - Dips northward a moderate 30-35 degrees
 - Significant economic minerals consist of
 - Sphalerite – zinc
 - Galena – lead
 - Chalcopyrite – copper
 - Electrum – silver and gold



Mineral Development Life Cycle

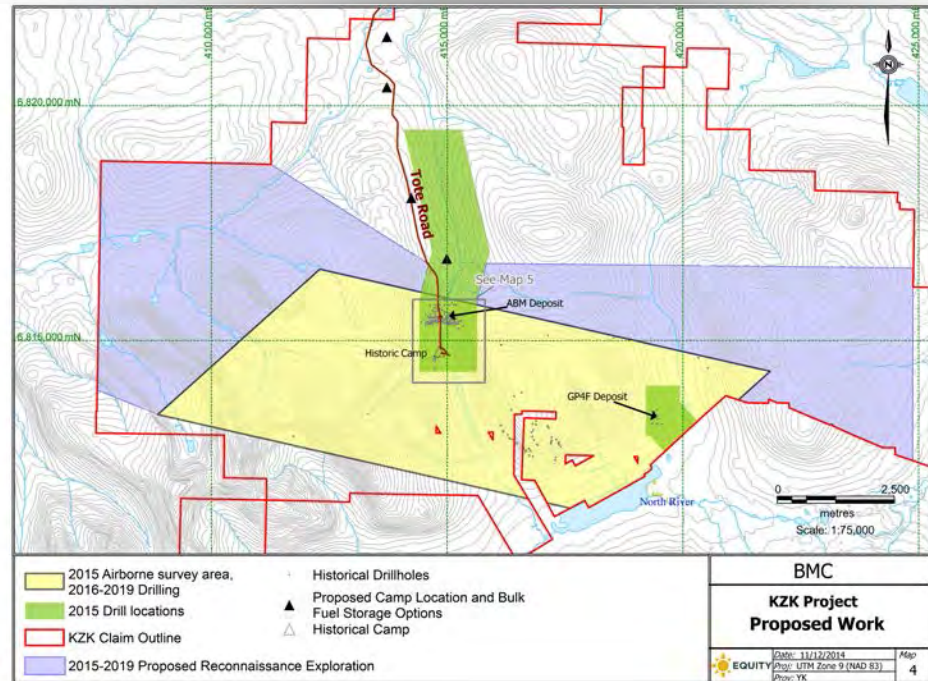


KZK – Exploration Permitting

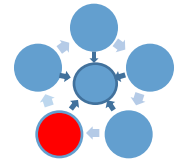


Exploration Program 2015

- Class 3 Quartz Mining Land Use Approval LQ00424
 - Obtained June 29, 2015, expires June 28, 2020
 - Temporary Exploration Camp – 49 People
 - Up to 230,000 m of diamond drilling from up to 800 sites
 - Up to 700 line km of cut line (<1.0 m width)
 - Up to 50 km of access trail
 - Baseline studies
 - Reclamation is progressive and on-going



KZK – A HOME AWAY FROM HOME

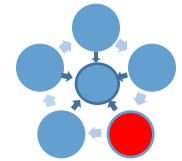


Exploration Program 2015

- Construction of 49 person exploration camp
 - 16 stick-framed insulated canvas sleepers – 4 person per tent
 - Three office tents
 - Two dries/wash house
 - Core processing facility
 - Drilled water well – with filtration and UV treatment
 - Grey water septic field

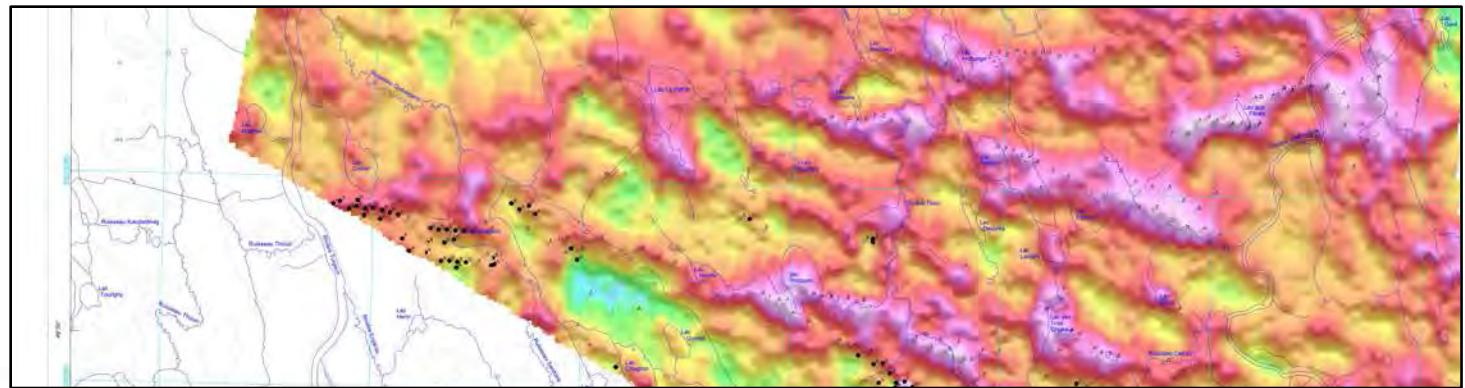


Geophysics – Developing Additional Targets

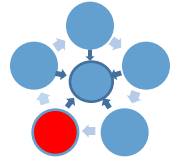


Exploration Program 2015

- Effective tool for collecting data and developing new targets for diamond drilling
- Airborne Geophysics – 267 line km VTEM (Versatile Time Domain Electromagnetic) Survey
- Ground Geophysics
 - Ground Gravity - ~80 line km
 - Down Hole Electro Magnetic Survey



Drill Core – Valuable Information

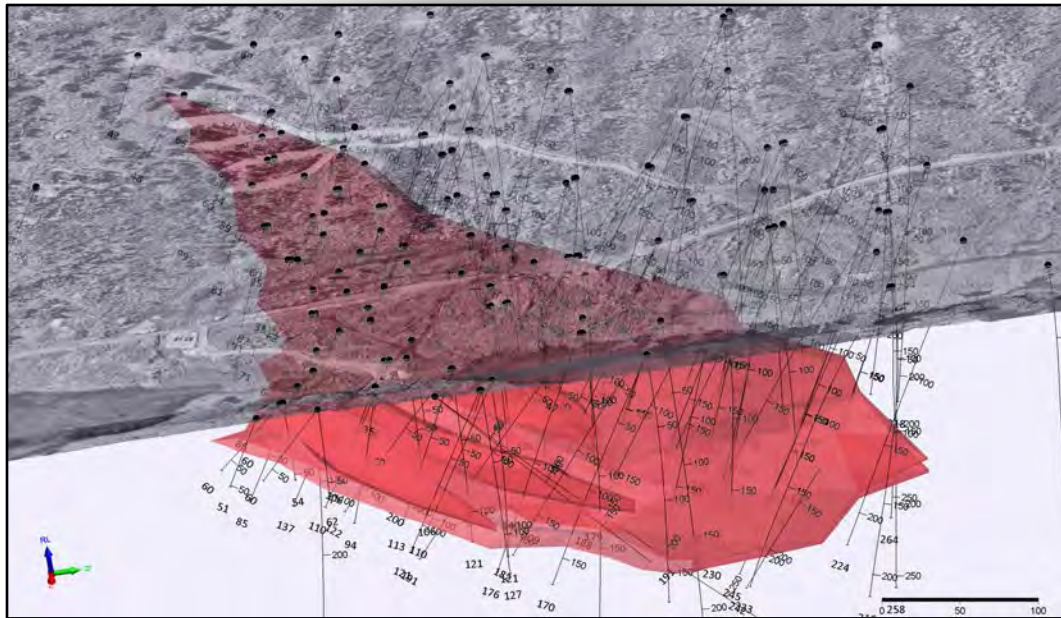
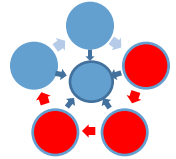


Exploration Program 2015

- Re logged ~23,000 m of Historical Core
 - Re-analysed select samples throughout the deposit
- Diamond Drilling - 2015
 - 3 skid mounted, 1 helicopter supported
 - Drilled 25,966 m in 139 holes.
 - Includes deposit definition, resource expansion, exploration, hydrogeological and geotechnical drill holes.



2016 – Exploration Activities



- Mineral Resource Estimate
 - Use 2015 and Cominco data
 - Extrapolate grades across the volume of mineralized material to determine contained metal
- Additional diamond drilling ~15,000 m
 - Around ABM resource expansion – skid mounted drills
 - Exploration and discovery (??) – helicopter supported
- Additional geophysical surveys
- Geological mapping and focused studies

Local Participation

RRDC Involvement

- RRDC suppliers
- RRDC contractors
- One full time BMC employee
(Gatekeeper and Community Facilitator)



Yukon Involvement

- Yukon suppliers
- Yukon contractors



Community Participation *(continued)*

Community Dinner & Presentation



- Held in early April
- Approximately 70 people attended

Community BBQ



- Held in mid October
- Approximately 100 people attended

KZK Environmental Program

Environmental Overview

Project Study History

- Environmental and Social Baseline Studies were conducted in the 1990's.
- Environmental and Social Impact Assessment was completed in the 1990's (*under the Canadian Environmental Assessment Act*).
- Type A Water Licence was issued in the 1990's.

Environmental Study Requirements

- A Project Proposal and Decision Document is required by the Yukon Environmental and Socio-economic Assessment Board before a mining licence can be issued.
- Environmental and social baseline studies in 2015/2016 will build and add to the data collected in the 1990's to support the Project Proposal submission.
- Studies will incorporate, Government, Kaska Nation and community feedback and participation.

Summary of Baseline Studies

Climate and Air Quality

Noise Levels

Surface Water Quality and Quantity

Groundwater Quality and Flow

Aquatic Ecosystems and Resources

Terrain and Soils

Vegetation Cover and Composition

Wildlife and Wildlife Habitat

Heritage Resources

Socio-Economics

Climate and Air Quality



- Two meteorological stations were installed at the site in 1995 and collected 6 months of continuous data.
- A new weather station was installed at the site in September 2015.
- The station includes a 10-meter mast, datalogger, satellite communication, total precipitation gauge, wind sensor, temperature and relative humidity sensor, barometric pressure sensor.

Noise Levels

- The project is located in a remote wilderness area, baseline noise levels are quiet and dominated by sounds of nature (e.g., wind, rustling of vegetation, chirping birds etc.)
- There are no permanent residents or seasonally used cabins in the project area.
- The noise baseline study will involve summarizing the ambient day time and nighttime sound levels for other remote areas similar to the project site.

Surface Water Quality and Quantity



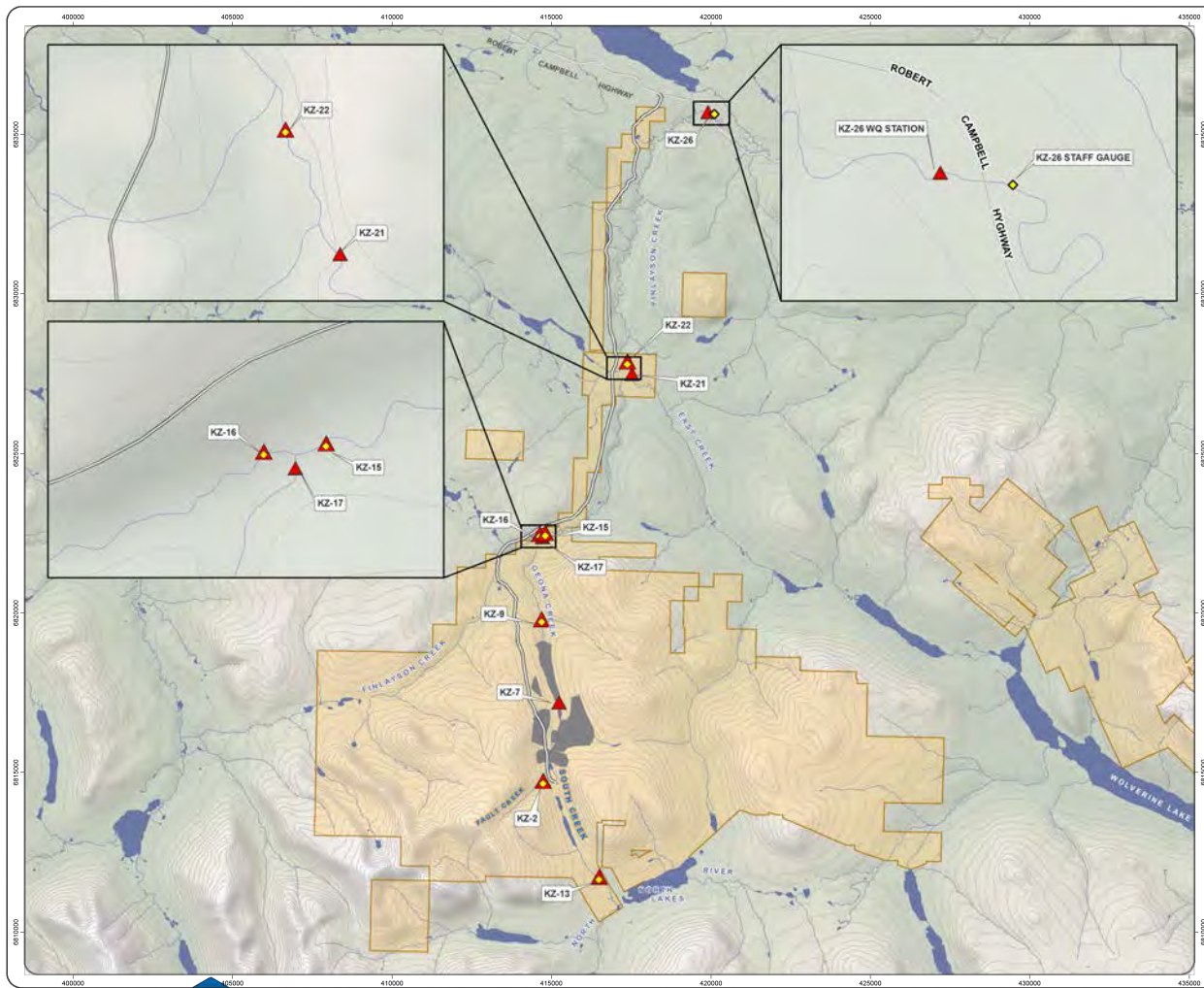
Surface Water Quality

- In 1994/1995 28 sites were sampled for water quality.
- Between 2002 and 2014 8 sites have been sampled 8 times as part of the water licence requirements.
- Monthly monitoring at 10 sites began in 2015 and will continue through the assessment process.

Surface Water Quality and Quantity *(continued)*

- The sites being monitoring include those from the water licence.
- 5 Artesian seeps at the site are also being sampled.





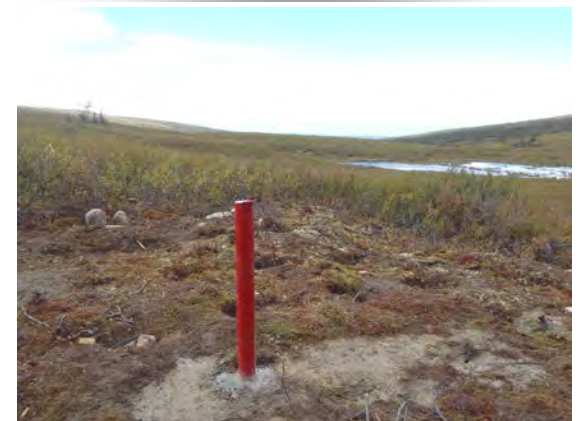
HYDROMETRIC STATIONS	ASSOCIATE D WQ STATION
South Creek	KZ13
Fault Creek	KZ2
Geona Creek	KZ-9
Finlayson Creek (west of confluence with Geona)	KZ16
Finlayson Creek (east of confluence with Geona)	KZ-15
Upper Finlayson Creek	KZ22
Lower Finlayson Creek	KZ26

Surface Water Quality and Quantity *(continued)*



Groundwater Quality and Flow

- Ten new groundwater wells were installed at the site (5 of them are nested).
- From the historical wells 13 have been redeveloped and sampled.
- Water levels and samples are being collected quarterly from the new and old wells.
- Select seeps/springs are being sampled.



Groundwater Quality and Flow *(Continued)*

- Packer tests (constant head injection tests) were conducted during well drilling in select exploration boreholes.
- Two pumping wells were installed and testing has been completed.
- Vibrating wire piezometers were installed in select boreholes.



Aquatic Ecosystems and Resources

An extensive aquatic ecosystems and resources program was conducted in 1994 and 1995:

- Fish surveys were conducted in (in early spring, late spring, summer and fall).
- Sediment samples were collected at 8 water quality sites in 1994 and 6 water quality sites in 1995.
- A benthic invertebrate sampling program was conducted at 12 of the water quality sites in 1995.
- In 1995, planktonic invertebrates were sampled in the lakes and ponds of the project area. In total, 7 sites were sampled.



Aquatic Ecosystems and Resources *(Continued)*

The following table summarizes the aquatic ecosystems and resources data that was collected every other year between 2002-2014.

Site	Water Quality	Stream Sediments	Benthic Invertebrates	BI Tissues	Fish	Fish Tissues
KZ-7	√	√				
KZ-9	√	√	√			
KZ-15	√	√	√	√	√	√
KZ-16	√	√	√	√	√	√
KZ-17	√	√	√			
KZ-21	√	√	√			
KZ-26	√	√	√	√	√	√
KZ-27	√	√	√			

Aquatic Ecosystems and Resources *(Continued)*

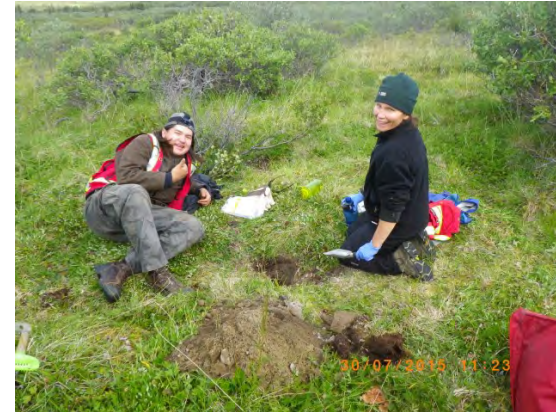
In 2015:

- Fish and fish habitat studies were aimed at delineating spawning and over-wintering habitat in Geona Creek, Finlayson Creek and the North Lakes system.
- Benthic invertebrate data were collected in Geona Creek.
- Periphyton sampling will be carried out in Geona Creek, Finlayson Creek as well as in the North Lakes.



Terrain and Soils

- Existing surficial geology and baseline soil information will be summarized.
- It will include an of update the existing overburden assessment and permafrost assessment with supplemental field data.
- Terrain mapping using aerial photo interpretation.



Terrain and Soils *(Continued)*

- evaluation of soil landscape and characterization
- sampling from representative soil locations for chemical analysis for metals and suitability parameters
- assess the capability of the soil to support potential site reclamation activities

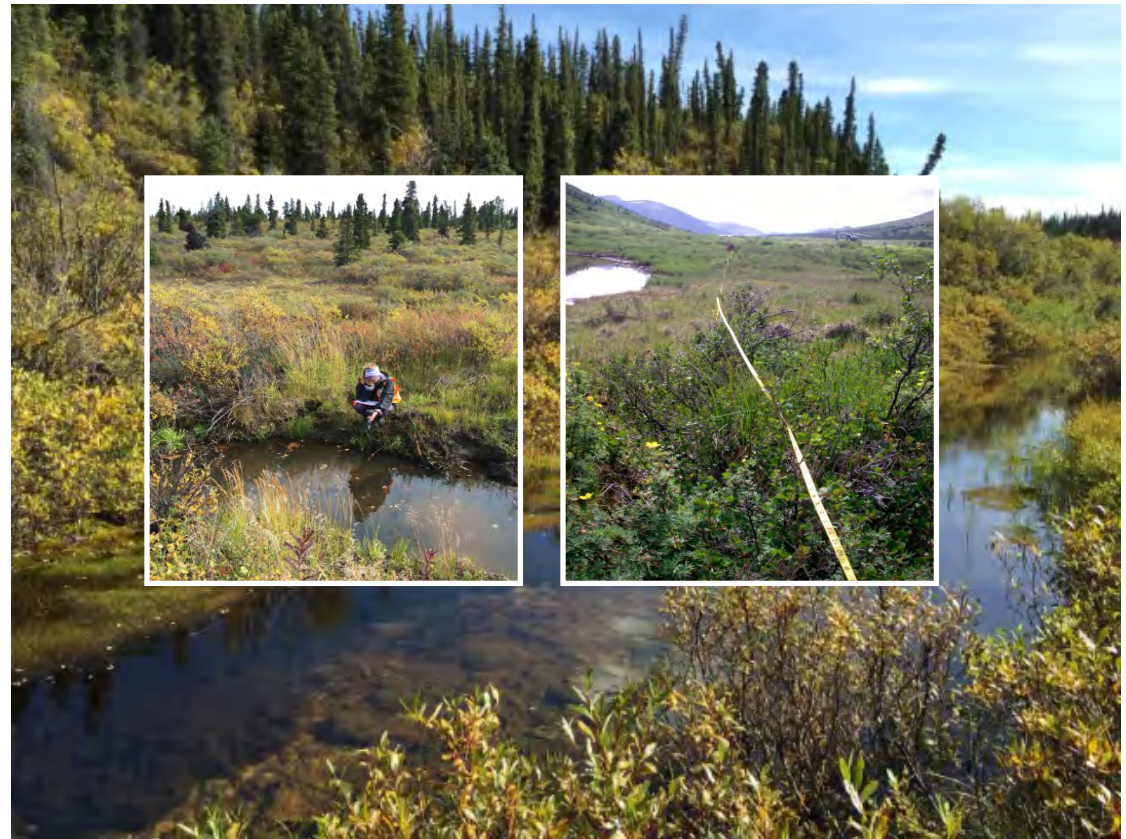


Vegetation Cover and Composition *(Continued)*

- Vegetation surveys, mapping and metals analysis of vegetation were conducted in the 1990's.
- In order to supplement the work from the 1990's.

This summer we initiated the following:

- Soil and plant tissue sampling
- Stand density and volume estimates.
- Survey of invasive plants along roads and camp areas.
- Treatment Wetland Evaluation
- TEM mapping of project site and along tote road.
- Rare plant surveys.



Vegetation Cover and Composition (*Continued*)

- The project area was also surveyed for invasive species



Wildlife and Wildlife Habitat

Wildlife surveys for the project were conducted in the 1990's.

Moose

- Early-winter (post-rut) aerial surveys (early November)
- Late-winter aerial surveys (late February/early March)



Wildlife and Wildlife Habitat (*Continued*)

- Motion sensor video camera was installed at a known mineral lick



Wildlife and Wildlife Habitat (*Continued*)

- Caribou
 - Post-calving aerial surveys (June/July)
 - Rut aerial surveys (early October);
 - Late-winter aerial survey (Late February/early March)
- Grizzly bear den in spring
- Ground based breeding bird point counts conducted in June
- Wetlands and lakes were visited to record observations and locate possible breeding, molting and staging areas for waterfowl
- Other surveys included: Raptors, Pika, Bats, Amphibians, Wolverine
 - track surveys



Heritage Resources



- In 1995, a heritage study was conducted in collaboration with the Ross River Dena Council (RRDC)
- A Heritage Resource Impact Assessment of the project was conducted in August 2015.
- The team assessed potential areas in and near each of the known component footprints and additional areas of high potential within the larger study area.



Socio-Economics

- The baseline socio-economic data collected in the 1990's is now out of date.
- The scope of the baseline study will be based those interests identified during the consultation and engagement process. Initial interests that are likely to be included are:
 - Land and resource use;
 - Traditional activities and culture;
 - Employment and economy;
 - Infrastructure and services; and
 - Human health and well-being.

Planned Works for 2016

- ✓ Complete Pre Feasibility Study in Q1 2016 to support commencement of application for Quartz Mining License
- ✓ Finalize Traditional Knowledge agreement and initiate TK study (Kaska Lead)
- ✓ Additional exploration activities to find more mineralization at KZK
- ✓ Additional community meetings to present the project description and seek feedback on design and mitigation measures
- ✓ Submit project proposal for executive committee review (Q4 2016)

Acknowledgments of Our Local Contractors

Tu'Lidlini – fuel, expediting, general project support

McLeod Contracting - earthworks

Moon Contracting – earthworks

Ross River Dena Store – camp materials, supplies, groceries

Aurora Geosciences – geophysical surveys

Challenger Geomatics – surveys

Small's Expediting – expediting

Alkan Air – fixed wing air support

Tintina Air – fixed wing air support

EBA Tetrattech – Hydrogeology and Socio-economics

Access Environmental Consultants – Environmental baseline studies

TransNorth – helicopter support

Horizon Helicopters – helicopter support

Ecofor – Heritage Assessment

Mercer Contracting – Climate Stations installation

K&K Truck Rentals – Field trucks

Total North – Communications

ALX Exploration Services – Field Materials

Valley B&B

High Country Inn

All our local **field crews**

Midnight Sun - groundwater pump tests

For Additional Information:

Call: 778-379-9262 or 778-233-7058

Fax: 778-379-9263

Email: info@bmcminerals.com or kellib@bmcminerals.com

Mail: 530 - 1130 West Pender St.

Vancouver, BC V6E 4A4

WEB: www.bmcminerals.com

Employment Enquiries: hr@bmcminerals.com

DISCLAIMER

Disclaimer:

This Presentation and other information which you are given at the time of presentation, in whatever form, do not constitute or form part of any offer or invitation to sell or issue, or any solicitation of any offer to purchase or subscribe for, any shares in BMC, nor shall it or any part of it form the basis of, or be relied upon in connection with, any contract or commitment whatsoever. No part of the contents of this Presentation is to be taken as any form of commitment on the part of the Company to proceed with any transaction, and the right is reserved to terminate any discussions or negotiations with any prospective investors. The distribution of this Presentation in certain jurisdictions may be restricted by law. No action has been taken or will be taken by the Company, by the existing shareholders or by any professional adviser to the Company, that would permit an offer of shares or possession or distribution of this Presentation where action for that purpose is required. Persons into whose possession this Presentation comes should inform themselves about, and observe, any such restrictions. Any failure to comply with these restrictions may constitute a violation of the securities laws of any such jurisdiction.

In no circumstances the Company will be responsible for any costs, losses or expenses incurred in connection with any appraisal or investigation of the Company. In furnishing this Presentation, the Company does not undertake or agree to any obligation to provide the recipient with access to any additional information or to update this Presentation or to correct any inaccuracies in, or omissions from, this Presentation that may become apparent.

This Presentation has been prepared by the Company and all reasonable care has been taken to ensure that the facts stated in the Presentation are true and accurate in all material respects to the best of the directors' knowledge, information and belief and that the opinions expressed are fair and reasonable. No reliance can be placed for any purpose whatsoever on the information contained in this Presentation or on its completeness. Certain figures noted herein are illustrative projections and are based on a number of assumptions, and no figures should be regarded as a profit forecast.

This Presentation includes resource and exploration target estimates that are not Joint Ore Reserves Committee ("JORC") or 43-101 compliant. The KZK resource estimation presented is based on a study completed in 1995. The Company has taken reasonable care that the resource estimations stated in the Presentation are accurate to the best of the directors' knowledge.

This Presentation contains forward-looking statements, which are based on BMC's current expectations and assumptions and involve known and unknown risks and uncertainties that could cause actual results, performance or events to differ materially from those expressed or implied in such statements. It is believed that the expectations reflected in these statements are reasonable, but they may be affected by a number of variables, which could cause actual results or trends to differ materially. Each forward-looking statement speaks only as of the date of the particular statement. Except as required by law, the Company disclaims any obligation or undertaking to release publicly any updates or revisions to any forward-looking statements contained herein to reflect any change in the Company's expectations with regard thereto or any change in events, conditions or circumstances on which any such statement is based.

In this presentation, "the Company" and "BMC" refer to BMC (UK) Limited and/or its subsidiaries, unless otherwise indicated or the context otherwise requires.