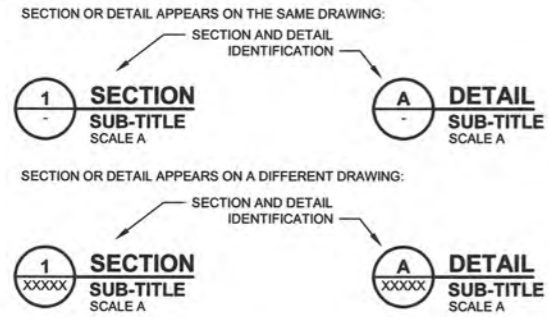
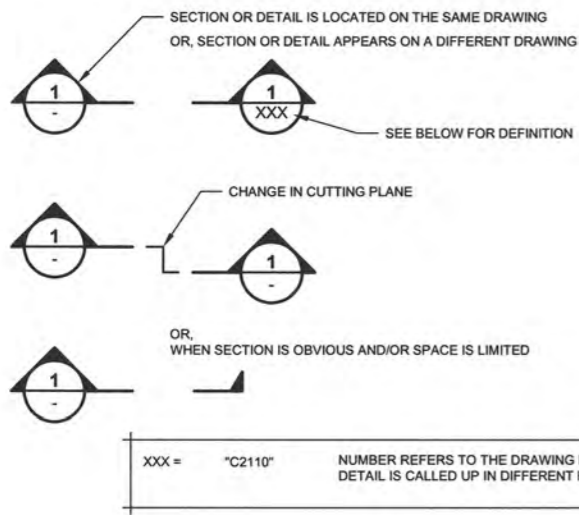


XREF FILES: IMAGE FILES:
 SAVVED: M:\10100640\2\Acad\DWGS\C001\C001_10/19/2016 9:05:40 AM, KMILLER PRINTED: 10/20/2016 10:39:51 AM, C001, KMILLER

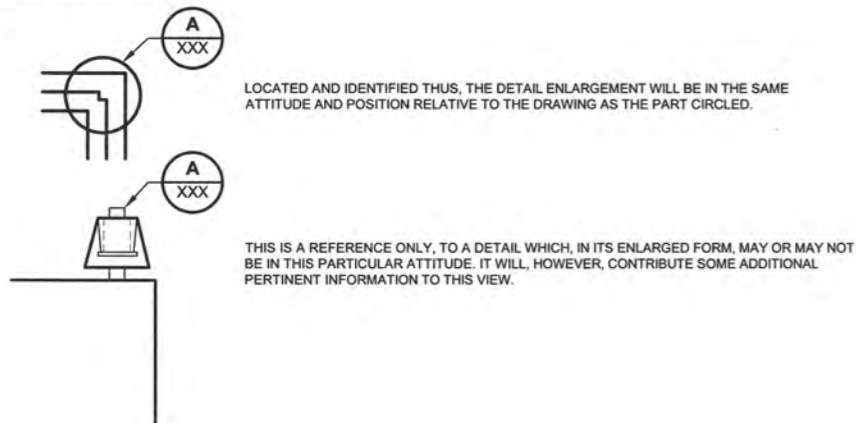
SECTIONAL VIEW AND DETAIL IDENTIFICATION



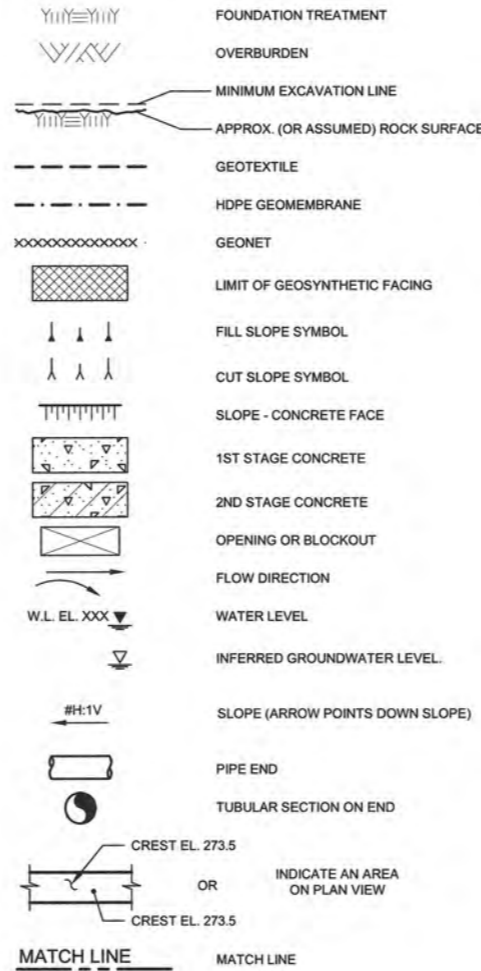
SECTION LOCATION ARROWS



DETAIL REFERENCE



LEGEND



ABBREVIATIONS

APPROX.	APPROXIMATE
BM	BEAM
BTW	BETWEEN
C/C	CENTER TO CENTER
CJ	CONSTRUCTION JOINT
COL.	COLUMN
CONC.	CONCRETE
CONTR. JT.	CONTRACTION JOINT
CSP	CORRUGATED STEEL PIPE
CTR	CENTER
CTF	CEMENTED TAILINGS FACILITY
DIA. OR Ø	DIAMETER
DN	DOWN
EA.	EACH
EL	ELEVATION IN METERS
EMB.	EMBANKMENT
EQ.	EQUAL
EXP. JT.	EXPANSION JOINT
GWA	GROUND WATER
ID	INSIDE DIAMETER
m	METER
mm	MILLIMETER
MRSF	MINE ROCK STORAGE FACILITY
NA	NOT APPLICABLE
NCWR	NON-CONTACT WATER RESERVOIR
NTS	NOT TO SCALE
OD	OUTSIDE DIAMETER
OPNG	OPENING
PWP	PROCESS WATER POND
R	RADIUS
REQ'D	REQUIRED
SOL	SETTING OUT LINE
SP	SPACING
SR	SHORT RADIUS
TMF	TAILINGS MANAGEMENT FACILITY
TYP.	TYPICAL
UNO	UNLESS NOTED OTHERWISE
W/	WITH
W/S	WATERSTOP
XXS	STEEL PIPE WEIGHT

FOR INFORMATION ONLY
 NOT FOR CONSTRUCTION

- DISCLAIMER -

THIS DRAWING WAS PREPARED BY KNIGHT PIESOLD LTD. FOR THE ACCOUNT OF THE CLIENT LISTED ON THIS DRAWING. THE MATERIAL ON IT REFLECTS KNIGHT PIESOLD'S BEST JUDGMENT IN THE LIGHT OF THE INFORMATION SUPPLIED TO IT AT THE TIME OF PREPARATION. ANY USE OF THIS DRAWING BY ANY OTHER PARTY WITHOUT THE WRITTEN CONSENT OF KNIGHT PIESOLD IS PROHIBITED. KNIGHT PIESOLD ACCEPTS NO RESPONSIBILITY FOR DAMAGES OF ANY KIND, INCLUDING CONSEQUENTIAL DAMAGES, ARISING FROM THE USE OF THIS DRAWING AS A RESULT OF DECISIONS MADE OR ACTIONS TAKEN BY ANY OTHER PARTY. COPIES RESULTING FROM ELECTRONIC TRANSFER OR REPRODUCTION OF THIS DRAWING ARE UNCONTROLLED AND MAY NOT BE THE MOST RECENT REVISIONS.

Knights Piésold
CONSULTING

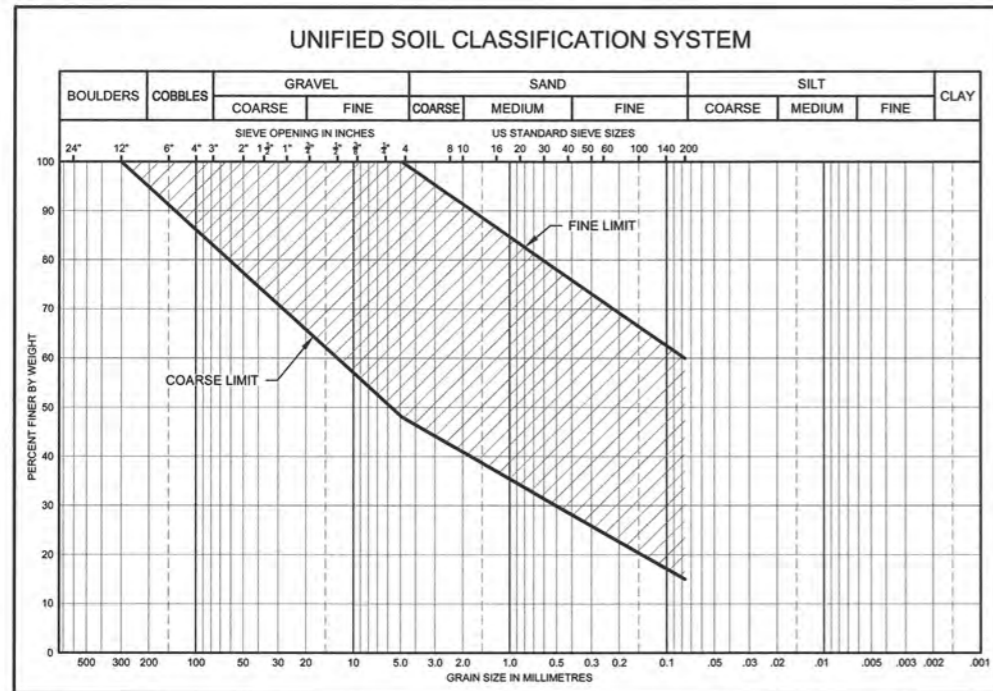
BMC MINERALS (NO. 1) LTD.

KUDZ ZE KAYAH PROJECT

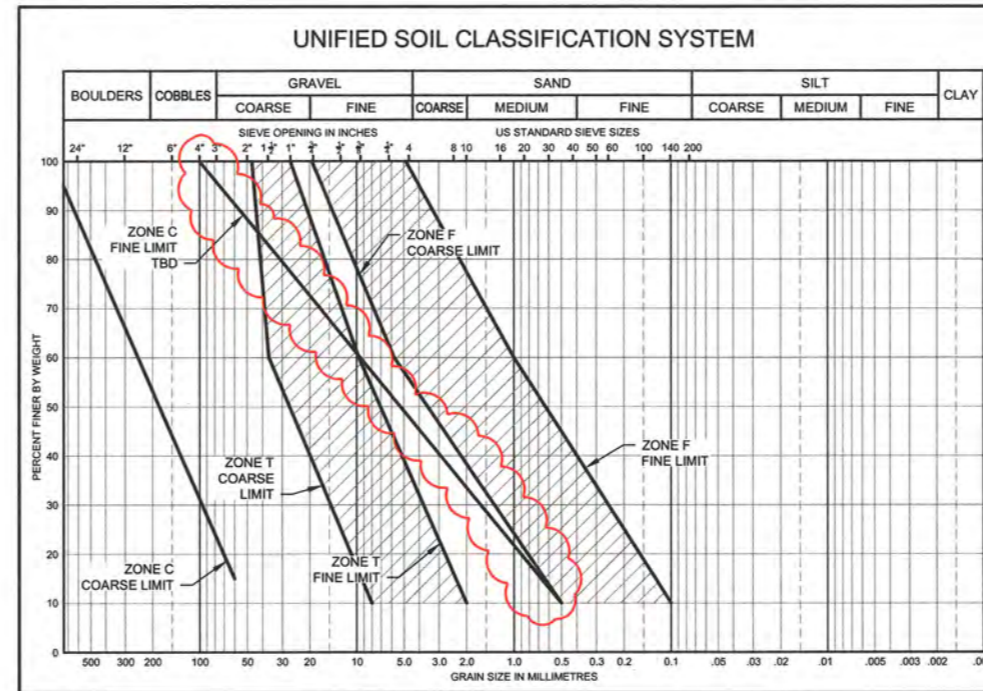
INDEX SHEET

L.J. GALBRAITH
 TERRITORY
 ENGINEER

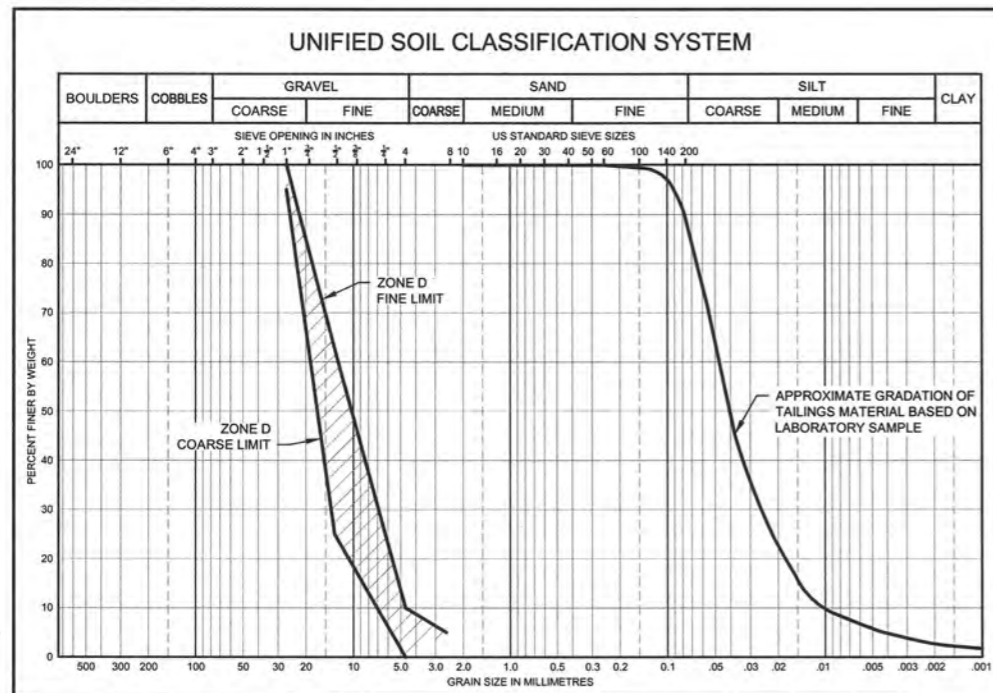
DRG. NO.	DESCRIPTION	REV	DATE	DESCRIPTION	DESIGNED	DRAWN	REVIEWED	APPROVED	REV	DATE	ISSUED WITH REPORT	MAP	KJM	REV	APPROVED
	REFERENCE DRAWINGS			REVISIONS											



ZONE S



ZONE F, T, C



ZONE D, A

MATERIAL PLACEMENT AND COMPACTION REQUIREMENTS			
ZONE	MATERIAL TYPE	LOCATIONS	PLACING AND COMPACTION REQUIREMENTS
S	GLACIAL TILL	CORE ZONE	PLACED AND SPREAD IN MAXIMUM 300 MM THICK LAYERS (AFTER COMPACTION), VIBRATORY COMPACTED TO 95% OF STANDARD PROCTOR MAXIMUM DRY DENSITY AND SUITABLE MOISTURE CONTENT OR AS APPROVED BY THE ENGINEER
F	FILTER SAND	CHIMNEY DRAIN	PLACED AND SPREAD IN MAXIMUM 600 MM THICK LAYERS AND COMPACTED WITH MINIMUM 4 PASSES OF 10 TON SMOOTH DRUM VIBRATORY ROLLER, OR AS APPROVED BY THE ENGINEER
T	GRAVEL	TRANSITION ZONE	PLACED AND SPREAD IN MAXIMUM 600 MM THICK LAYERS AND COMPACTED WITH MINIMUM 4 PASSES OF 10 TON SMOOTH DRUM VIBRATORY ROLLER, OR AS APPROVED BY THE ENGINEER
C	WASTE ROCK	SHELL ZONE	PLACED AND SPREAD IN MAXIMUM 1000 MM THICK LAYERS AND COMPACTED BY SELECTIVE ROUTING OF MINE HAUL TRUCKS.
D	DRAINAGE GRAVEL	DRAINS	PLACED AROUND DRAINAGE PIPES AND WRAPPED WITH GEOTEXTILE.
A	TAILINGS	CLASS A STORAGE FACILITY	PLACED, MOISTURE CONDITIONED AND SPREAD IN MAXIMUM 300 MM THICK LAYERS (AFTER COMPACTION), VIBRATORY COMPACTED TO 95% OF STANDARD PROCTOR MAXIMUM DRY DENSITY AND SUITABLE MOISTURE CONTENT OR AS APPROVED BY THE ENGINEER

**FOR INFORMATION ONLY
NOT FOR CONSTRUCTION**

- DISCLAIMER -

**Knight Piésold
CONSULTING**

BMC MINERALS (NO. 1) LTD.

KUDZ ZE KAYAH PROJECT

**CONSTRUCTION MATERIAL
SPECIFICATIONS**

YUKON
L.J. GALBRAITH
ENGINEER

027 20/16

VA101-640/2

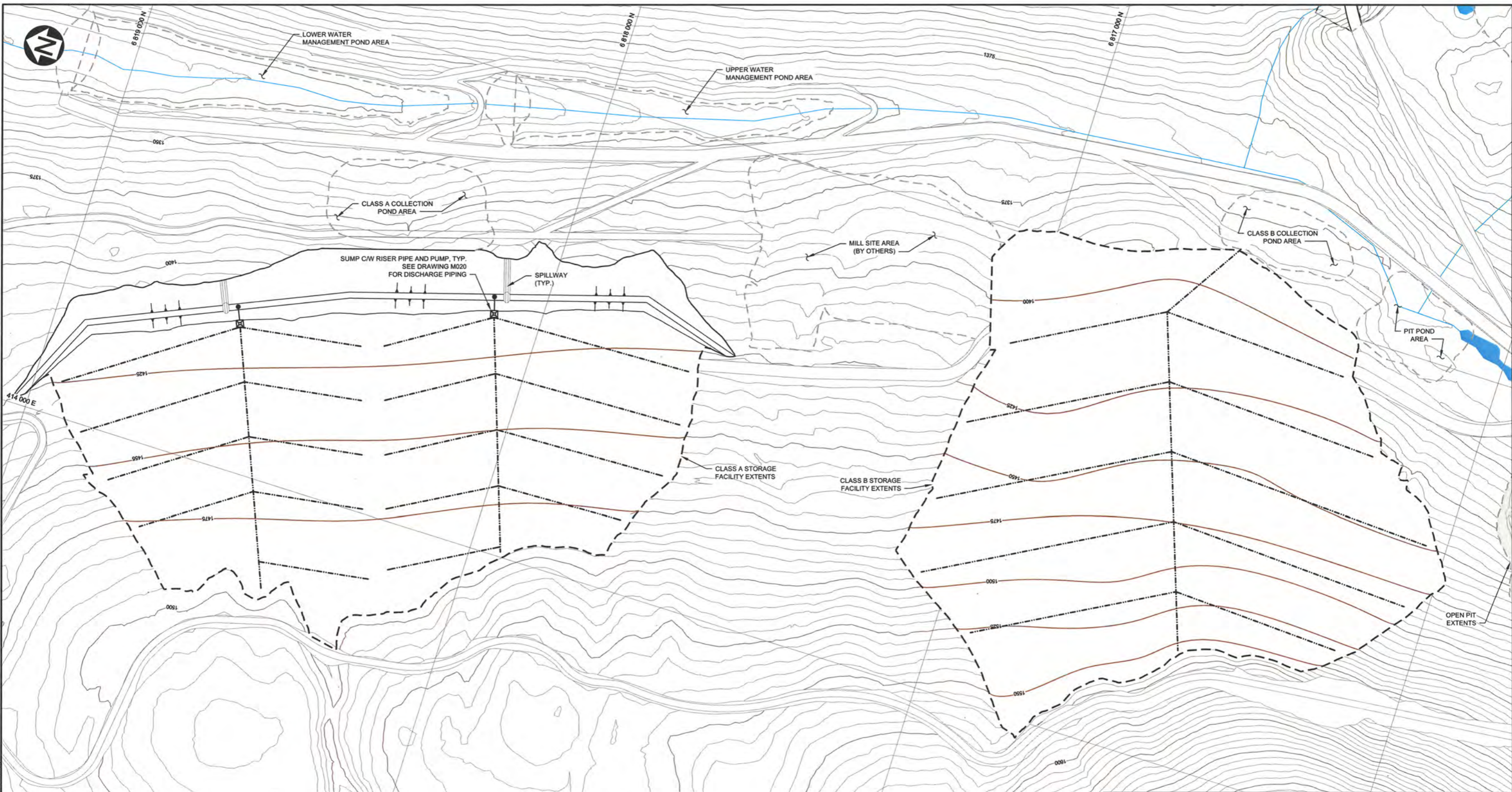
C010

0

SAVED: M:\1\10100640\2\A\Acad\DWG\SS\010\C010_10202016 10:45:56 AM, C010, KMILLER XREF FILES: IMAGE FILES: hahog.pdf

DRG. NO.	DESCRIPTION	REV	DATE	DESCRIPTION	DESIGNED	DRAWN	REVIEWED	APPROVED	REV	DATE	DESCRIPTION	MAP	KJM	REVIEWED	APPROVED	P/A NO.	DRAWING NO.	REVISION	
	REFERENCE DRAWINGS			REVISIONS					0	21OCT'16	ISSUED WITH REPORT						VA101-640/2	C010	0

SAVED: M:\1101006402\VA\Acad\DWGS\C230\C230_1019192016 9:28:34 AM - KMILLER PRINTED: 10/20/2016 10:53:50 AM, C230, KMILLER
 XREF FILES: V:\TRAIL\VA\POPC-CONT-5.dwg, C:\Users\kmiller\OneDrive\Documents\VA\POPC-CONT-5.dwg



PLAN
SCALE A



- NOTES:**
1. COORDINATE GRID IS UTM NAD 83 9N.
 2. TOPOGRAPHIC DETAIL BASED ON INFORMATION PROVIDED BY BMC FEBRUARY 02, 2016.
 3. PIT SHELLS PROVIDED BY BMC MINERALS (NO.1) LTD. APRIL 8, 2016.
 4. CONTOUR INTERVAL IS 5 METRES.
 5. ALL ELEVATIONS ARE IN METRES, UNLESS NOTED OTHERWISE.

- LEGEND:**
- STORAGE FACILITY OUTLINE
 - - - - ZONE C FRENCH DRAIN

FOR INFORMATION ONLY
 NOT FOR CONSTRUCTION

- DISCLAIMER -

THIS DRAWING WAS PREPARED BY KNIGHT PIESOLD LTD. FOR THE ACCOUNT OF THE CLIENT LISTED ON THIS DRAWING. THE MATERIAL ON IT REFLECTS KNIGHT PIESOLD'S BEST JUDGMENT IN THE LIGHT OF THE INFORMATION AVAILABLE TO IT AT THE TIME OF PREPARATION. ANY USE WHICH A THIRD PARTY MAKES OF THIS DRAWING OR ANY RELIANCE ON OR DECISIONS TO BE MADE THEREON ARE THE RESPONSIBILITY OF SUCH PARTY. KNIGHT PIESOLD ACCEPTS NO LIABILITY FOR DAMAGES OF ANY KIND OR CONSEQUENCES AS A RESULT OF ANY SUCH USE OR RELIANCE. THIS DRAWING IS UNCONTROLLED AND MAY NOT BE USED FOR REPRODUCTION OR REPRODUCTION OF THIS DRAWING WITHOUT THE MOST RECENT REVISION OF THIS DRAWING.

Knight Piésold
CONSULTING

BMC MINERALS (NO. 1) LTD.

KUDZ ZE KAYAH PROJECT

GRADING PLAN, SEEPAGE COLLECTION SYSTEM AND OVERLINER DRAINAGE

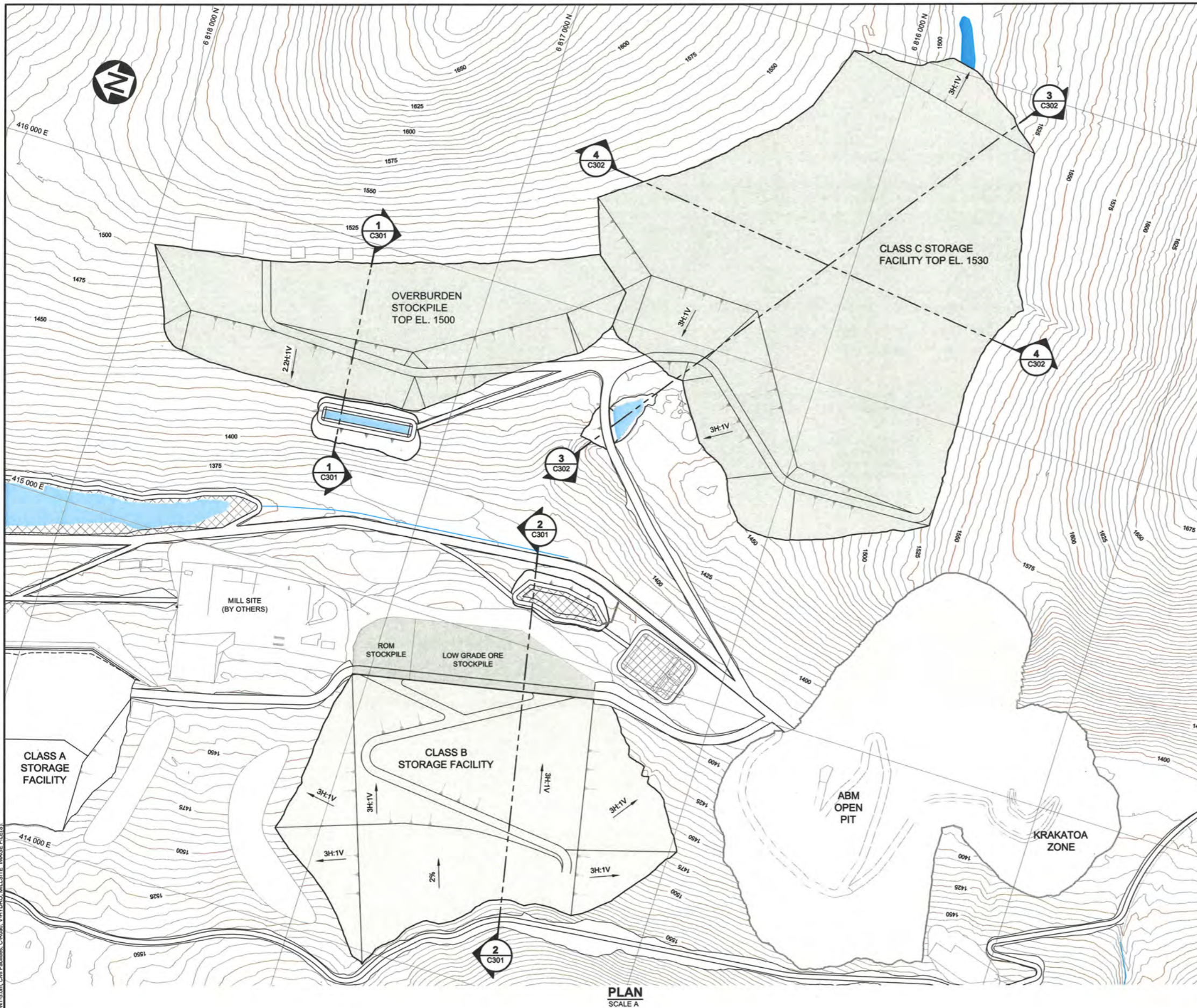
YUKON TERRITORY
ENGINEER

L.J. GALBRAITH
027 2/16

PIA NO. **VA101-640/2** DRAWING NO. **C230** REVISION **0**

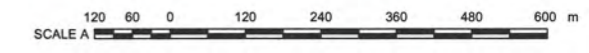
DRG. NO.	DESCRIPTION	REV	DATE	DESCRIPTION	DESIGNED	DRAWN	REVIEWED	APPROVED	ISSUED WITH REPORT	MAP	KJM	JHA	JHA
	REFERENCE DRAWINGS			REVISIONS					0	21OCT16			
				REVISIONS									

SAVED: M:\110100640\02\VA\acad\DWG\C300-C302-101919\2016 9:42:20 AM, KMILLER PRINTED: 10/20/2016 11:02:22 AM, C300, KMILLER XREF FILE(S): V:\DPO\CONT-5\m Civil Facilities, C:\Road, V:\HYDRO, MILL SITE IMAGE FILE(S)



- NOTES:**
1. COORDINATE GRID IS UTM NAD 83 9N.
 2. TOPOGRAPHIC DETAIL BASED ON INFORMATION PROVIDED BY BMC FEBRUARY 02, 2016.
 3. CONTOUR INTERVAL IS 5 METRES.
 4. ALL ELEVATIONS ARE IN METRES, UNLESS NOTED OTHERWISE.

**FOR INFORMATION ONLY
NOT FOR CONSTRUCTION**



PLAN
SCALE A

DISCLAIMER
THIS DRAWING WAS PREPARED BY KNIGHT PIESOLD LTD. FOR THE ACCOUNT OF THE CLIENT LISTED ON THIS DRAWING. THE MATERIAL ON IT REFLECTS KNIGHT PIESOLD'S BEST JUDGEMENT IN THE LIGHT OF THE INFORMATION AVAILABLE TO IT AT THE TIME OF PREPARATION AND IS NOT TO BE USED FOR ANY OTHER PURPOSES WITHOUT THE WRITTEN CONSENT OF KNIGHT PIESOLD. KNIGHT PIESOLD ACCEPTS NO RESPONSIBILITY FOR DAMAGES OR LOSSES OF ANY KIND, INCLUDING REVENUE, ARISING FROM THE USE OF THIS DRAWING. COPIES RESULTING FROM THIS DRAWING ARE UNCONTROLLED AND MAY NOT BE THE MOST RECENT REVISION OF THIS DRAWING.

YUKON TERRITORY ENGINEER
L. GALBRATH
02/1/16

Knicht Piesold CONSULTING

BMC MINERALS (NO. 1) LTD.

KUDZ ZE KAYAH PROJECT

OVERBURDEN STOCKPILE, CLASS B AND CLASS C STORAGE FACILITIES PLAN

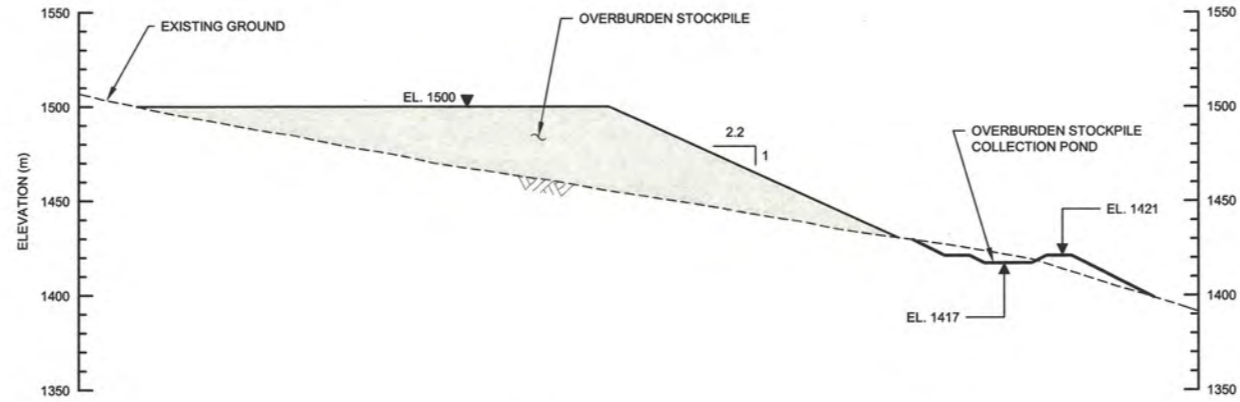
P/A NO. **VA101-640/2** DRAWING NO. **C300** REVISION **0**

DRG. NO.	DESCRIPTION	REV	DATE	DESCRIPTION	DESIGNED	DRAWN	REVIEWED	APPROVED
C302	CLASS C STORAGE FACILITY - SECTIONS 3 & 4							
C301	OVERBURDEN STOCKPILE AND CLASS B STORAGE FACILITY - SECTIONS 1 & 2							

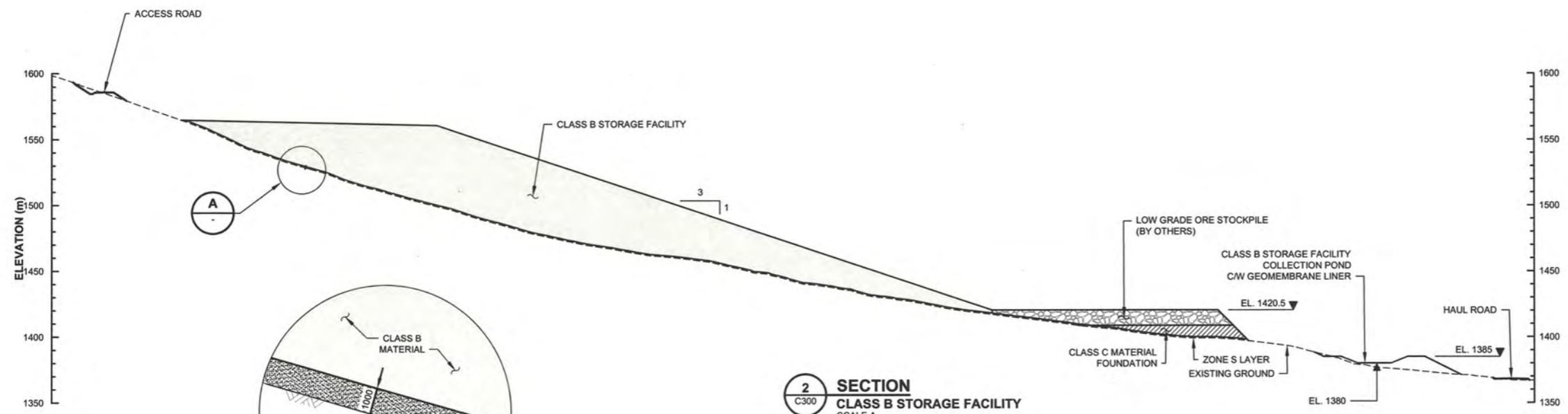
REV	DATE	DESCRIPTION	DESIGNED	DRAWN	REVIEWED	APPROVED
0	21OCT'16	ISSUED WITH REPORT				

REV	DATE	DESCRIPTION	DESIGNED	DRAWN	REVIEWED	APPROVED
0	21OCT'16	ISSUED WITH REPORT				

SAVEN: M:\10100640\02\AA\Acad\DWGS\C300-C302\C300-C302.dwg, 10/19/2016 9:42:20 AM, KMILLER, PRINTED: 10/20/2016 11:03:00 AM, C301, KMILLER
 XREF FILE(S): V:\DPO\CONT-5.Dwg; C:\HW\DWG\MILLSTE_IMAGE FILES

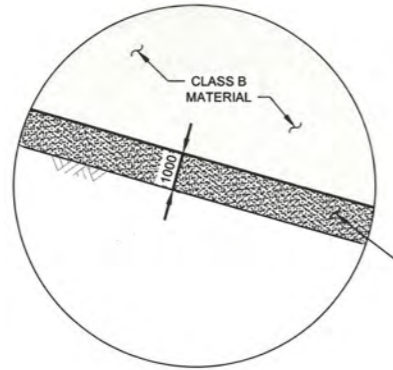


1 SECTION
OVERBURDEN STOCKPILE
 SCALE A



2 SECTION
CLASS B STORAGE FACILITY
 SCALE A

- LEGEND:**
- CLASS B MATERIAL
 - DRAIN ROCK
 - ZONE S (BEDDING LAYER)
 - CLASS C MATERIAL



A DETAIL
 NTS



- NOTES:**
- ALL ELEVATIONS ARE IN METRES, UNLESS NOTED OTHERWISE.
 - BENCHES NOT SHOWN.

FOR INFORMATION ONLY
 NOT FOR CONSTRUCTION

- DISCLAIMER -

THIS DRAWING WAS PREPARED BY KNIGHT PIESOLD LTD FOR THE ACCOUNT OF THE CLIENT LISTED ON THIS DRAWING. THE MATERIAL ON IT REFLECTS KNIGHT PIESOLD'S BEST JUDGEMENT IN THE LIGHT OF THE INFORMATION AVAILABLE TO IT AT THE TIME OF PREPARATION. ANY USE WHICH A THIRD PARTY MAKES OF THIS DRAWING OR ANY RELIANCE ON OR DECISIONS TO BE MADE BASED ON IT ARE THE RESPONSIBILITY OF SUCH THIRD PARTY. KNIGHT PIESOLD ACCEPTS NO LIABILITY FOR DAMAGES OF ANY KIND, INCLUDING CONSEQUENTIAL DAMAGES, ARISING FROM THE USE OF THIS DRAWING AS A BASIS FOR ANY DECISIONS MADE OR FOR ANY ELEVATION, DIMENSION OR REPRODUCTION THEREOF. THIS DRAWING IS UNCONTROLLED AND MAY NOT BE THE MOST RECENT REVISION OF THIS DRAWING.

Knigh Piesold
CONSULTING

BMC MINERALS (NO. 1) LTD.
 KUDZ ZE KAYAH PROJECT
 OVERBURDEN STOCKPILE AND
 CLASS B STORAGE FACILITY
 SECTION 1 AND 2

L.J. GALBRAITH
TERRITORY
ENGINEER

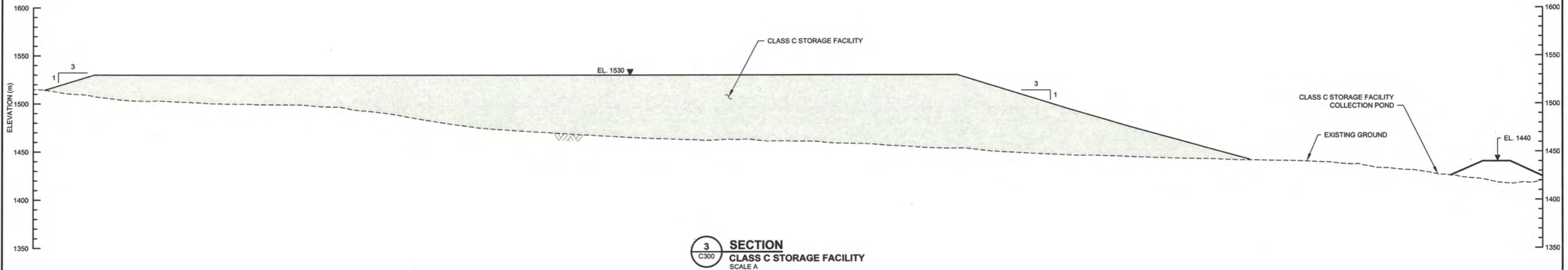
P/A NO. **VA101-640/2**

DRAWING NO. **C301**

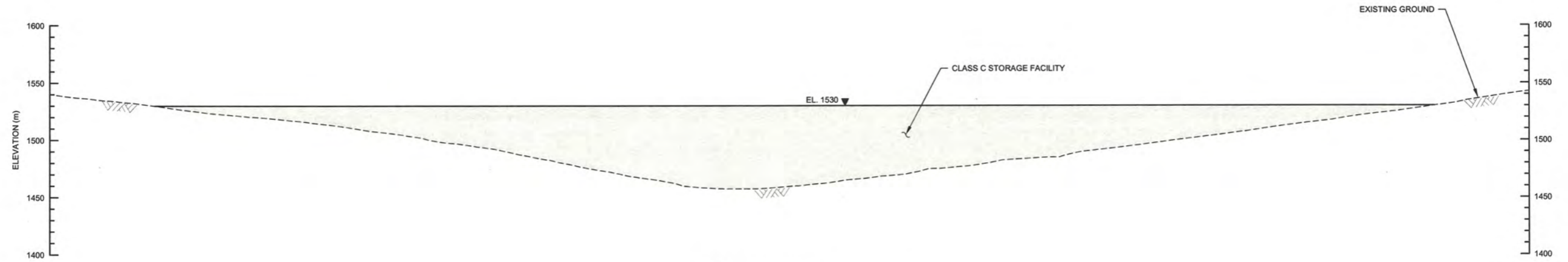
REVISION **0**

C300 OVERBURDEN STOCKPILE, CLASS B AND CLASS C STORAGE FACILITIES - PLAN		DESIGNED				DRAWN				REVIEWED				APPROVED				ISSUED WITH REPORT				MAP				KJM				Jed				Jed					
DRG. NO.	DESCRIPTION	REV	DATE	DESCRIPTION	DESIGNED	DRAWN	REVIEWED	APPROVED	REV	DATE	DESCRIPTION	DESIGNED	DRAWN	REVIEWED	APPROVED	REV	DATE	DESCRIPTION	DESIGNED	DRAWN	REVIEWED	APPROVED	REV	DATE	DESCRIPTION	DESIGNED	DRAWN	REVIEWED	APPROVED	REV	DATE	DESCRIPTION	DESIGNED	DRAWN	REVIEWED	APPROVED			
	REFERENCE DRAWINGS																																						

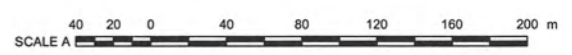
SAVED: M:\11010064\02\VA\Acad\DWG\C300-C302_10\19\2016 9:42:20 AM - KMILLER PRINTED: 10/20/2016 11:03:49 AM, C302, KMILLER
 XREF FILES: V:\PC\CONT-3.dwg, Civil Facilities, C-302, V-HYDRO; MILL SITE IMAGE FILES



3 SECTION
C300 CLASS C STORAGE FACILITY
 SCALE A



4 SECTION
C300 CLASS C STORAGE FACILITY
 SCALE A



NOTES:

- 1. ALL ELEVATIONS ARE IN METRES, UNLESS NOTED OTHERWISE.
- 2. BENCHES NOT SHOWN.

**FOR INFORMATION ONLY
 NOT FOR CONSTRUCTION**

DISCLAIMER
 THIS DRAWING WAS PREPARED BY KNIGHT PIESOLD LTD. FOR THE ACCOUNT OF THE CLIENT LISTED ON THIS DRAWING. THE MATERIAL ON IT REFLECTS KNIGHT PIESOLD'S BEST JUDGEMENT IN THE LIGHT OF THE INFORMATION AVAILABLE TO IT AT THE TIME OF PREPARATION AND NOT THAT OF THE PARTY MAKES OF THIS DRAWING OR ANY PART THEREOF OR OF ANYTHING THEREON OR THEREIN OR OF THE RESOURCES OF ANY OTHER PARTY. KNIGHT PIESOLD ACCEPTS NO LIABILITY FOR DAMAGES OF ANY KIND SUFFERED BY THE THIRD PARTY AS A RESULT OF THE WORKS MADE IN ACCORDANCE WITH THIS DRAWING. COPIES RESULTING FROM ELECTRONIC TRANSFER OR REPRODUCTION OF THIS DRAWING ARE UNCONTROLLED AND MAY NOT BE THE MOST RECENT REVISION OF THIS DRAWING.

L. J. GALBRAITH
 TERRITORY ENGINEER
 02/20/16

Knicht Piesold CONSULTING

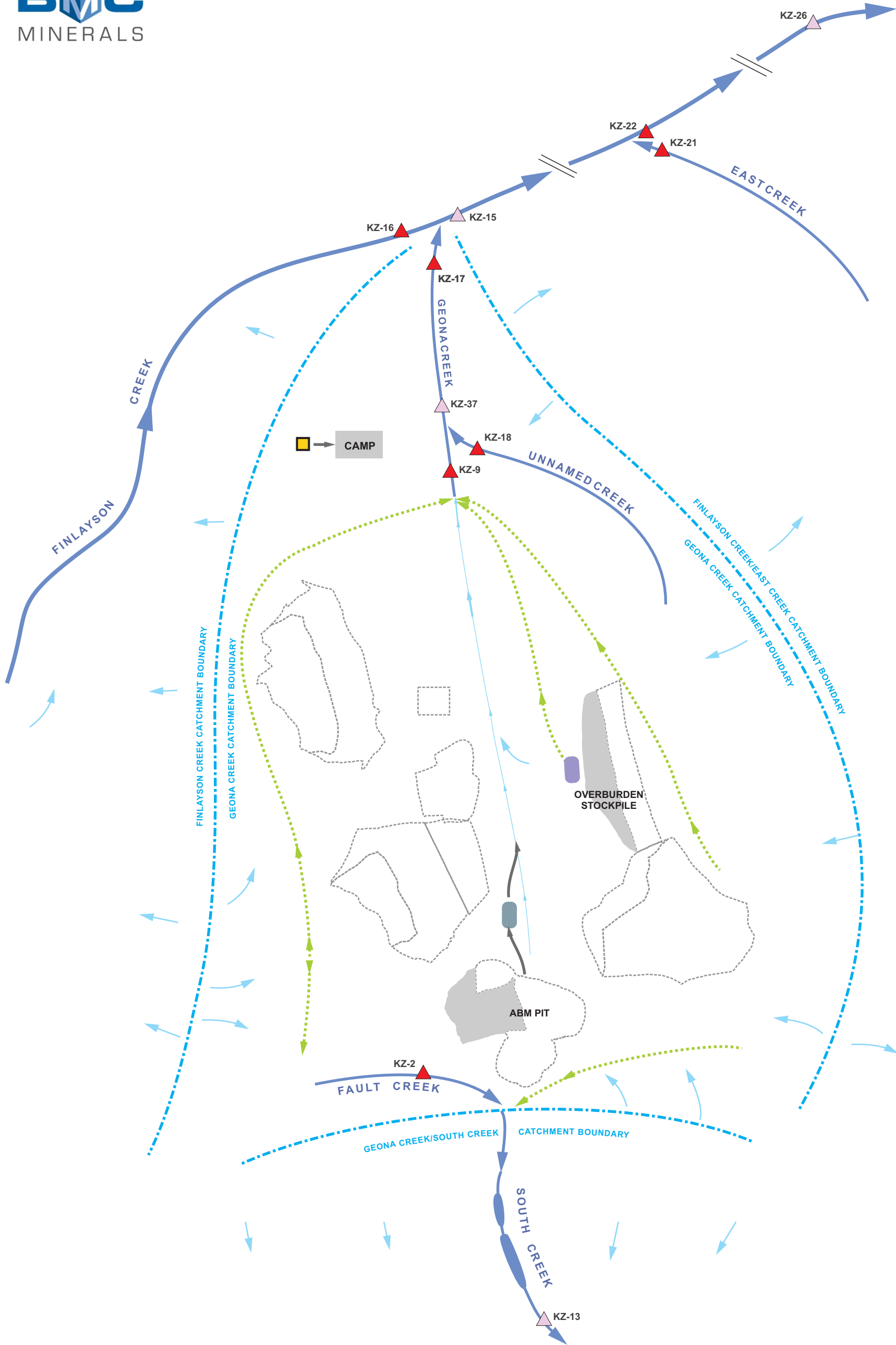
0

KUDZ ZE KAYAH PROJECT

CLASS C STORAGE FACILITY SECTION 3 AND 4

VA101-640/2 C302 0

C300	OVERBURDEN STOCKPILE, CLASS B AND CLASS C STORAGE FACILITIES - PLAN	0	21OCT'16	ISSUED WITH REPORT	MAP	KJM	
DRG. NO.	DESCRIPTION	REV	DATE	DESCRIPTION	DESIGNED	DRAWN	REVIEWED
	REFERENCE DRAWINGS			REVISIONS			
				REVISIONS			



This drawing has been prepared for the use of Alexco Environmental Group's client and may not be used, reproduced or relied upon by third parties, except as agreed by Alexco Environmental Group and its client, as required by law or for use of governmental reviewing agencies. Alexco Environmental Group accepts no responsibility, and denies any liability whatsoever, to any party that modifies this drawing without Alexco Environmental Group's express written consent.

CONCEPTUAL DRAWING AND FOR ILLUSTRATION PURPOSES ONLY; FEATURES ARE NOT TO SCALE



- | | | | |
|--|----------------------------------|--|------------------------|
| | Surface Water Monitoring Station | | Pipeline |
| | Modelled Location | | Watercourse |
| | Groundwater Well | | Diversion Ditch |
| | Storage Facility Collection Pond | | Catchment |
| | Pit Rim Pond | | Surface Flow Direction |
| | Year 1 Mine Feature Footprint | | |
| | Year 10 Mine Feature Footprint | | |

WMP - Water Management Pond
WTP - Water Treatment Plant

KUDZ ZE KAYAH PROJECT

CONSTRUCTION WATER MANAGEMENT SCHEMATIC

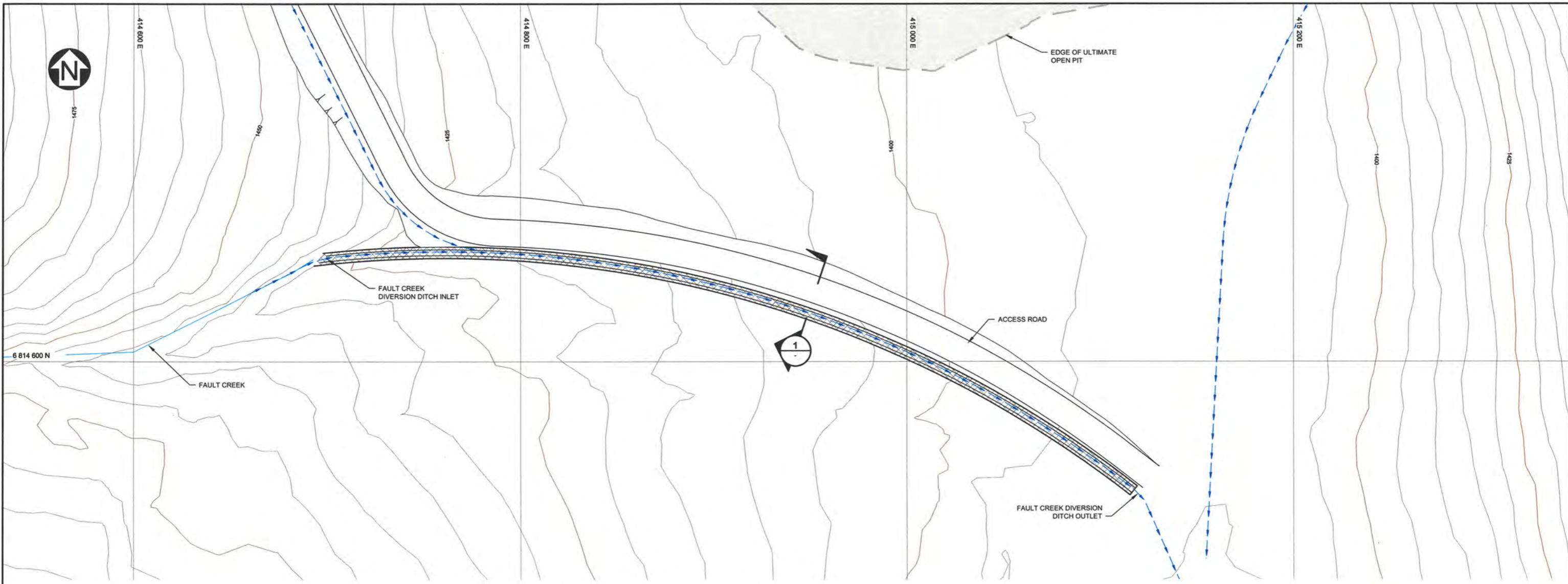
DRAWN BY GIS

JANUARY 2017

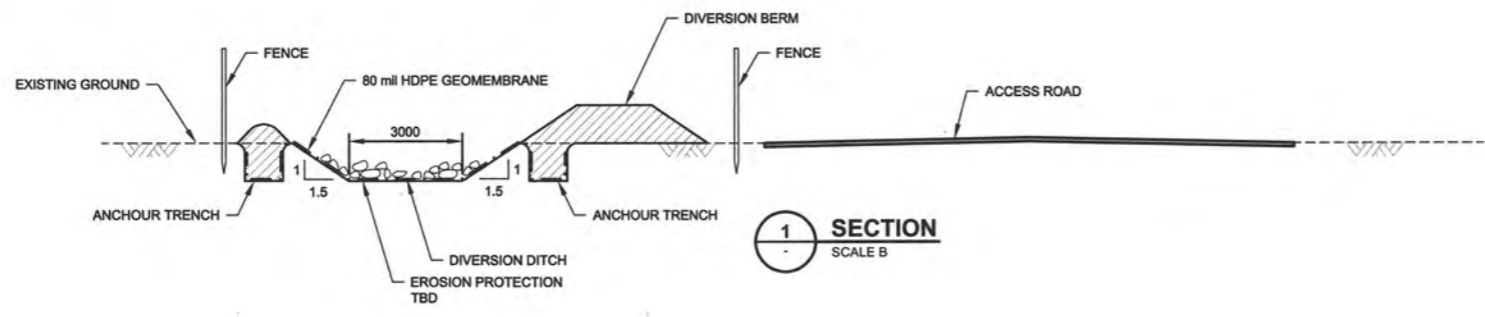
VERIFIED BY KW

D:\Project\AP\Projects\Kudz_Ze_Kayah\Presentations\Water Management\Water Quality Predictions\Water_quality_prediction_schematics_MFA_V2_20160226.doc

SAVED: M:\11010064002\A\A\cadd\DWG\CS60\CS60_10/19/2016 12:01:25 PM . KMILLER PRINTED: 10/20/2016 11:21:17 AM. c560, KMILLER XREF FILE(S): V:\TPOC\CONT-5.Dwg; Civil Facilities; C-Road; Hydro; V:\HYDRO IMAGE FILE(S):



PLAN
SCALE A



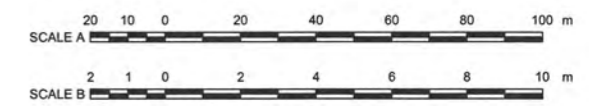
SECTION
SCALE B

LEGEND:

- HDPE GEOMEMBRANE (PLAN)
- HDPE GEOMEMBRANE (PROFILE)

NOTES:

1. COORDINATE GRID IS UTM NAD 83 9N.
2. TOPOGRAPHIC DETAIL BASED ON INFORMATION PROVIDED BY BMC FEBRUARY 02, 2016.
3. PIT SHELLS PROVIDED BY BMC MINERALS (NO.1) LTD. APRIL 8, 2016.
4. CONTOUR INTERVAL IS 5 METRES.
5. ALL ELEVATIONS ARE IN METRES, UNLESS NOTED OTHERWISE.



**FOR INFORMATION ONLY
NOT FOR CONSTRUCTION**

- DISCLAIMER -

THIS DRAWING WAS PREPARED BY KNIGHT PIESOLD LTD. FOR THE ACCOUNT OF THE CLIENT LISTED ON THIS DRAWING. THE MATERIAL ON IT REFLECTS KNIGHT PIESOLD'S BEST JUDGEMENT IN THE LIGHT OF THE INFORMATION AVAILABLE TO IT AT THE TIME OF PREPARATION. ANY USE WHICH A THIRD PARTY MAKES OF THIS DRAWING, OR ANY RELIANCE ON OR DECISIONS TO BE MADE THEREON, ARE THE RESPONSIBILITY OF SUCH THIRD PARTY. KNIGHT PIESOLD ACCEPTS NO LIABILITY FOR DAMAGES, IF ANY, SUFFERED BY OR INCURRED AS A RESULT OF ERRORS MADE OR OMISSIONS BASED ON SUCH DRAWING. COPYING OR REPRODUCTION OF THIS DRAWING OR ANY PART THEREOF WITHOUT THE WRITTEN PERMISSION OF KNIGHT PIESOLD IS STRICTLY PROHIBITED AND MAY BE SUBJECT TO LEGAL ACTION.

Knicht Piesold
CONSULTING

0

KUDZ ZE KAYAH PROJECT

WATER MANAGEMENT SYSTEM

**FAULT CREEK DIVERSION
PLAN AND SECTION**

L. GALBRAITH
TERRITORY
ENGINEER

VA101-640/2

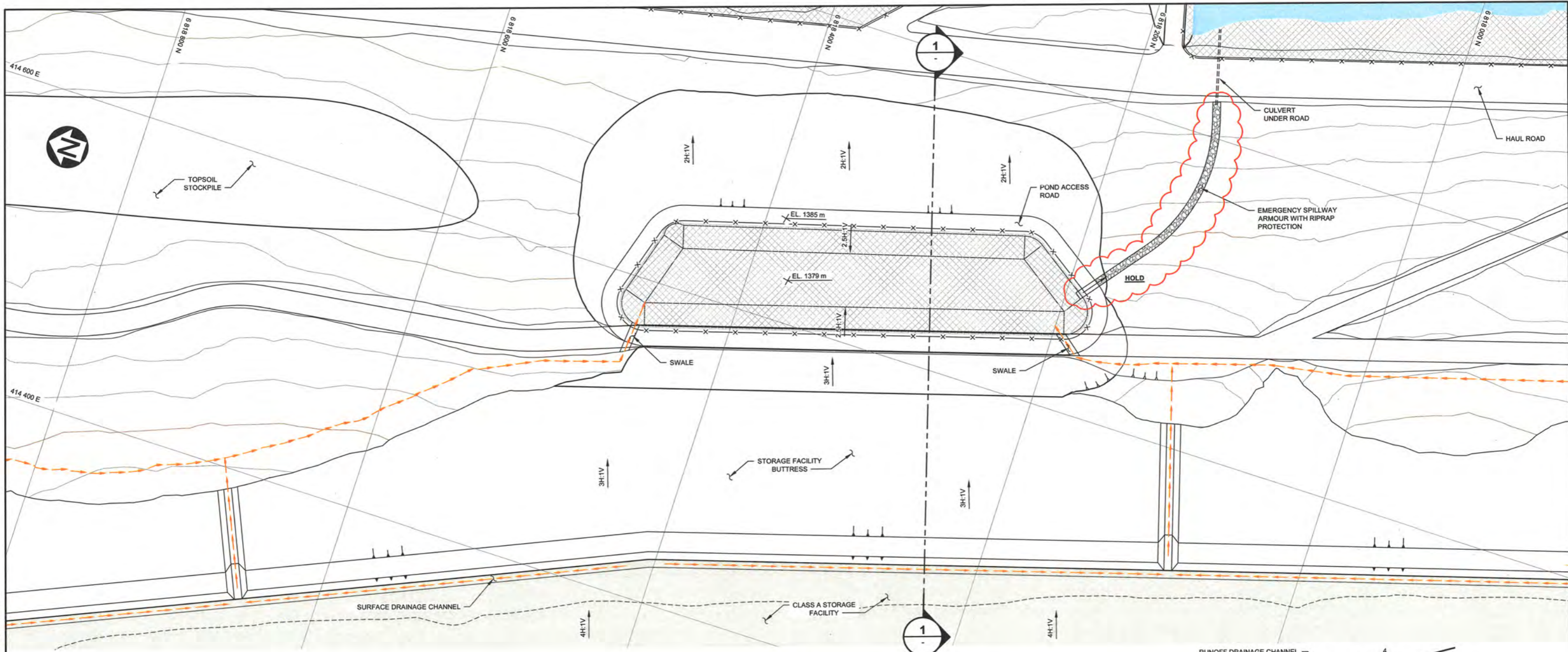
C560

0

DRG. NO.	DESCRIPTION	REV	DATE	DESIGNED	DRAWN	REVIEWED	APPROVED
	REFERENCE DRAWINGS						
	REVISIONS						

REV	DATE	DESCRIPTION	DESIGNED	DRAWN	REVIEWED	APPROVED
0	21OCT'16	ISSUED WITH REPORT				
		REVISIONS				

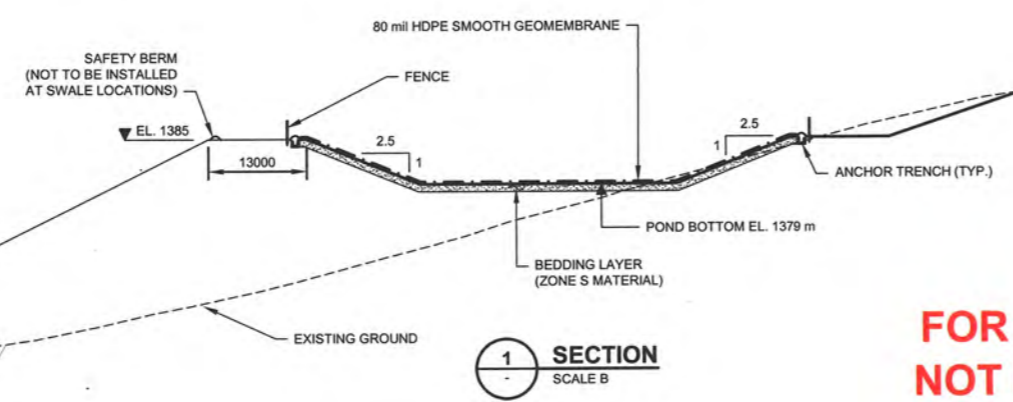
SAVED: M:\101006402\BMC\DWG\C510_10192016_10-17-16_43 AM - KMILLER PRINTED: 10/20/2016 11:10:34 AM, C510, KMILLER
 XREF FILES: C:\Program Files\Autodesk\LT2016\bin\acadiso.plt; C:\Program Files\Autodesk\LT2016\bin\acadiso.plt; C:\Program Files\Autodesk\LT2016\bin\acadiso.plt; C:\Program Files\Autodesk\LT2016\bin\acadiso.plt



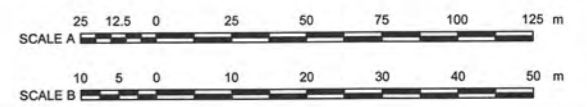
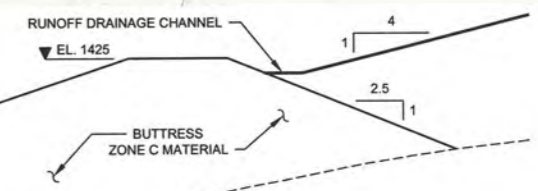
- NOTES:**
1. COORDINATE GRID IS UTM NAD 83 9N.
 2. TOPOGRAPHIC DETAIL BASED ON INFORMATION PROVIDED BY BMC FEBRUARY 02, 2016.
 3. CONTOUR INTERVAL IS 5 METRES.
 4. DIMENSIONS ARE IN MILLIMETRES AND ELEVATIONS ARE IN METRES, UNLESS NOTED OTHERWISE.

PLAN
SCALE A

- LEGEND:**
- HDPE GEOMEMBRANE (PLAN)
 - HDPE GEOMEMBRANE (PROFILE)
 - RIPRAP ARMOURING
 - ZONE S
 - FENCE LINE
 - SEEPAGE COLLECTION DITCH



SECTION
SCALE B



FOR INFORMATION ONLY
 NOT FOR CONSTRUCTION

-- DISCLAIMER --
 THIS DRAWING WAS PREPARED BY KNIGHT PIESOLD LTD. FOR THE ACCOUNT OF THE CLIENT LISTED ON THIS DRAWING. THE FACILITY ON IT REFLECTS KNIGHT PIESOLD'S BEST JUDGEMENT IN THE LIGHT OF THE INFORMATION AVAILABLE TO IT AT THE TIME OF PREPARATION. ANY USE WHICH A THIRD PARTY MAKES OF THIS DRAWING, OR ANY RELIANCE ON OR DECISIONS TO BE MADE BASED ON IT, ARE THE RESPONSIBILITY OF SUCH THIRD PARTY. KNIGHT PIESOLD ACCEPTS NO LIABILITY FOR ANY DAMAGES, IF ANY, SUFFERED OR INCURRED AS A RESULT OF SUCH USES. THIS DRAWING IS BASED ON FIELD SURVEY DATA AND COPIES. REPRODUCTION OF THIS DRAWING, IN WHOLE OR IN PART, WITHOUT THE WRITTEN CONSENT OF KNIGHT PIESOLD IS UNAUTHORIZED AND MAY BE THE MOST RECENT REVISION OF THIS DRAWING.

L.J. GALBRAITH
 TERRITORY ENGINEER
 027 20/16

Knight Piésold
 CONSULTING

BMC MINERALS (NO. 1) LTD.

KUDZ ZE KAYAH PROJECT

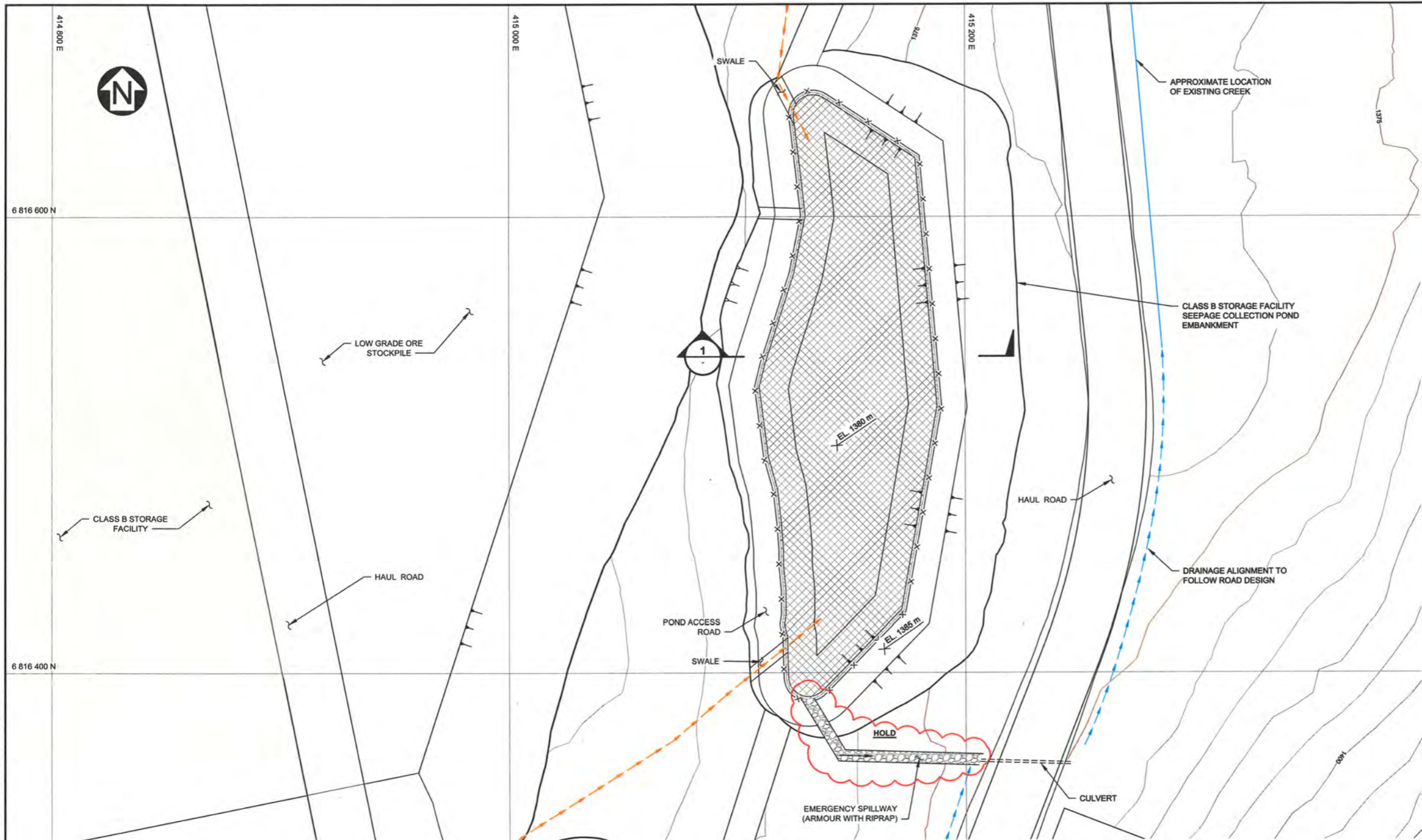
WATER MANAGEMENT SYSTEM
 CLASS A STORAGE FACILITY
 COLLECTION POND
 PLAN AND SECTION

DRAWING NO. **VA101-640/2** REVISION **0**
 C510

DRG. NO.	DESCRIPTION	REV.	DATE	DESCRIPTION	DESIGNED	DRAWN	REVIEWED	APPROVED
	REFERENCE DRAWINGS							
	REVISIONS							

REV.	DATE	DESCRIPTION	DESIGNED	DRAWN	REVIEWED	APPROVED
0	21OCT16	ISSUED WITH REPORT	MAP	KJM		

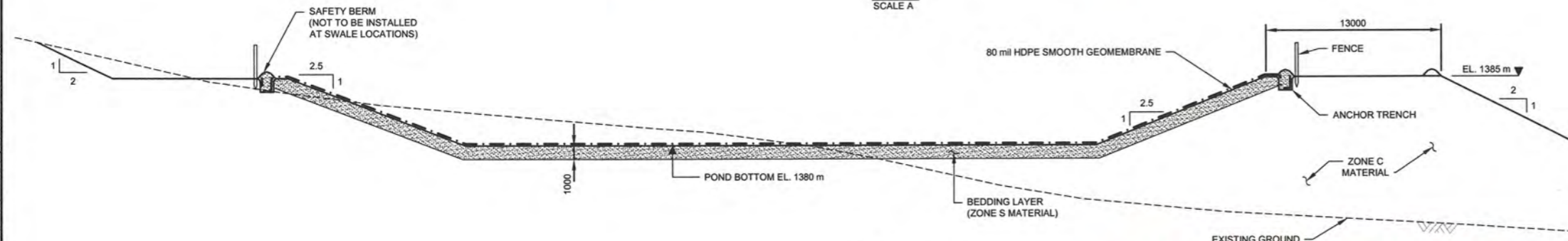
SAVED: M:\11010064\02\VA\cadd\DWGS\C520\C520, 10/19/2016 11:39:47 AM - KMILLER PRINTED: 10/20/2016 11:12:25 AM, c520, KMILLER
 XREF FILE(S): Civil Facilities, V:\TOPCO-CONT-5.0m, C:\Roads, V:\HYDRO, Images, MILL SITE, IMAGE FILE(S)



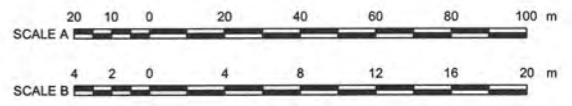
PLAN
SCALE A

- LEGEND:**
- HDPE GEOMEMBRANE (PLAN)
 - HDPE GEOMEMBRANE (PROFILE)
 - RIPRAP ARMOURING
 - ZONE S
 - FENCE LINE
 - SEEPAGE COLLECTION DITCH
 - DRAINAGE TO WATER MANAGEMENT POND

- NOTES:**
1. COORDINATE GRID IS UTM NAD 83 9N.
 2. TOPOGRAPHIC DETAIL BASED ON INFORMATION PROVIDED BY BMC FEBRUARY 02, 2016.
 3. CONTOUR INTERVAL IS 5 METRES.
 4. DIMENSIONS ARE IN MILLIMETRES AND ELEVATIONS ARE IN METRES, UNLESS NOTED OTHERWISE.



SECTION
SCALE B



**FOR INFORMATION ONLY
NOT FOR CONSTRUCTION**

DISCLAIMER
 THIS DRAWING WAS PREPARED BY KNIGHT PIESOLD LTD. FOR THE ACCOUNT OF THE CLIENT LISTED ON THIS DRAWING. THE MATERIAL ON IT REFLECTS KNIGHT PIESOLD'S BEST JUDGEMENT IN THE LIGHT OF THE INFORMATION AVAILABLE TO IT AT THE TIME OF PREPARATION. ANY USE WHICH A THIRD PARTY MAKES OF THIS DRAWING OR ANY RELIANCE ON OR DECISIONS TO BE MADE BASED ON IT, ARE THE RESPONSIBILITY OF THAT PARTY. KNIGHT PIESOLD ACCEPTS NO RESPONSIBILITY FOR DAMAGES, IF ANY, SUFFERED BY ANY PARTY AS A RESULT OF ANY USE OF THIS DRAWING. ELECTRONIC TRANSMISSION OF THIS DRAWING IS UNCONTROLLED AND MAY NOT BE THE MOST RECENT REVISION OF THIS DRAWING.

L.J. GALBRAITH
L.J. GALBRAITH
 TERRITORY
 027 20/16
 ENGINEER

Knights Piesold CONSULTING

BMC MINERALS (NO. 1) LTD.

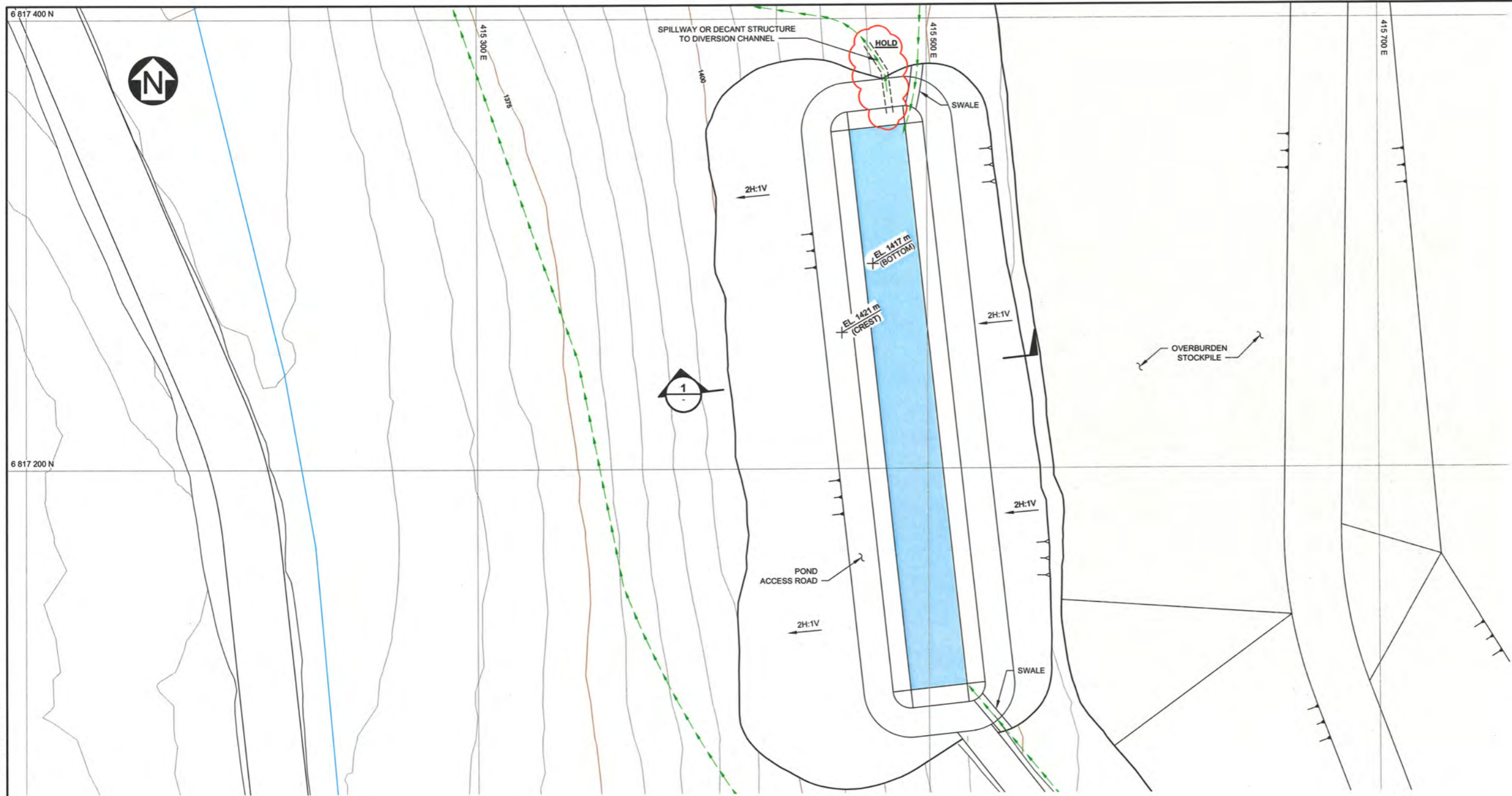
KUDZ ZE KAYAH PROJECT

**WATER MANAGEMENT SYSTEM
CLASS B STORAGE FACILITY
COLLECTION POND
PLAN AND SECTION**

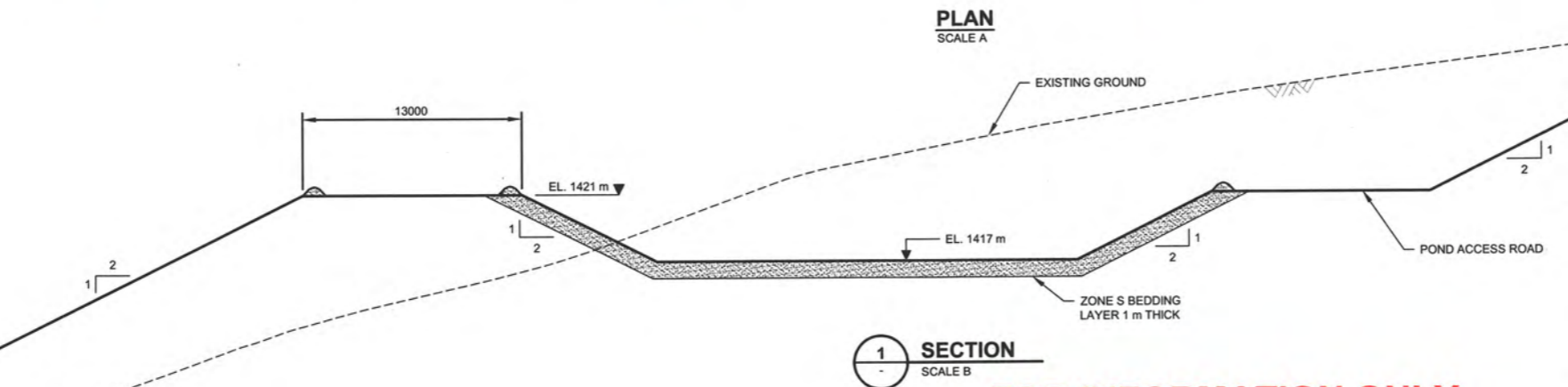
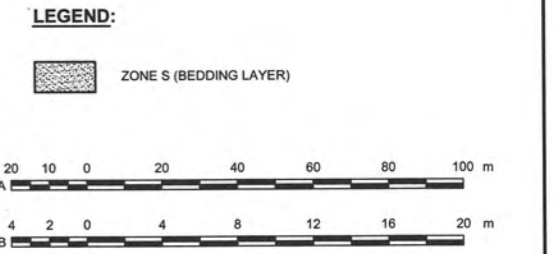
DRG. NO. **VA101-640/2** DRAWING NO. **C520** REVISION **0**

DRG. NO.	DESCRIPTION	REV	DATE	DESCRIPTION	DESIGNED	DRAWN	REVIEWED	APPROVED	REV	DATE	DESCRIPTION	DESIGNED	DRAWN	REVIEWED	APPROVED
	REFERENCE DRAWINGS								0	21OCT'16	ISSUED WITH REPORT	MAP	KJM		
				REVISIONS							REVISIONS				

SAVED: N:\101\00640\2\VA101-640\DWG\SS\CS40\C540_10/19/2016 11:48:09 AM - KMILLER PRINTED: 10/20/2016 11:15:47 AM, C540, KMILLER
 XREF FILE(S): Civil Facilities; C-Road; V:\HYDRO; Hydro; IMAGE FILE(S);



- NOTES:**
- COORDINATE GRID IS UTM NAD 83 9N.
 - TOPOGRAPHIC DETAIL BASED ON INFORMATION PROVIDED BY BMC FEBRUARY 02, 2016.
 - CONTOUR INTERVAL IS 5 METRES.
 - ALL DIMENSIONS ARE IN MILLIMETRES AND ELEVATIONS ARE IN METRES, UNLESS NOTED OTHERWISE.



FOR INFORMATION ONLY
 NOT FOR CONSTRUCTION

-- DISCLAIMER --

THIS DRAWING WAS PREPARED BY KNIGHT PIESOLD LTD. FOR THE ACCOUNT OF THE CLIENT LISTED ON THIS DRAWING. THE MATERIAL ON IT REFLECTS KNIGHT PIESOLD'S BEST JUDGEMENT IN THE LIGHT OF THE INFORMATION AVAILABLE TO IT AT THE TIME OF PREPARATION. ANY USE WHICH A THIRD PARTY MAKES OF THIS DRAWING, OR ANY RELIANCE ON OR DECISIONS TO BE MADE THEREON, ARE THE RESPONSIBILITY OF SUCH THIRD PARTY. KNIGHT PIESOLD ACCEPTS NO LIABILITY FOR DAMAGES, INCLUDING CONSEQUENTIAL DAMAGES, AS A RESULT OF ANY ERRORS OR OMISSIONS MADE OR BASED ON THIS DRAWING. REPRODUCTION OF THIS DRAWING FOR ANY PURPOSES WITHOUT THE WRITTEN PERMISSION OF KNIGHT PIESOLD IS UNAUTHORIZED AND MAY NOT BE THE MOST RECENT REVISION OF THIS DRAWING.

L.J. GALBRAITH
 TERRITORY ENGINEER
 02/20/16

Knight Piésold
 CONSULTING

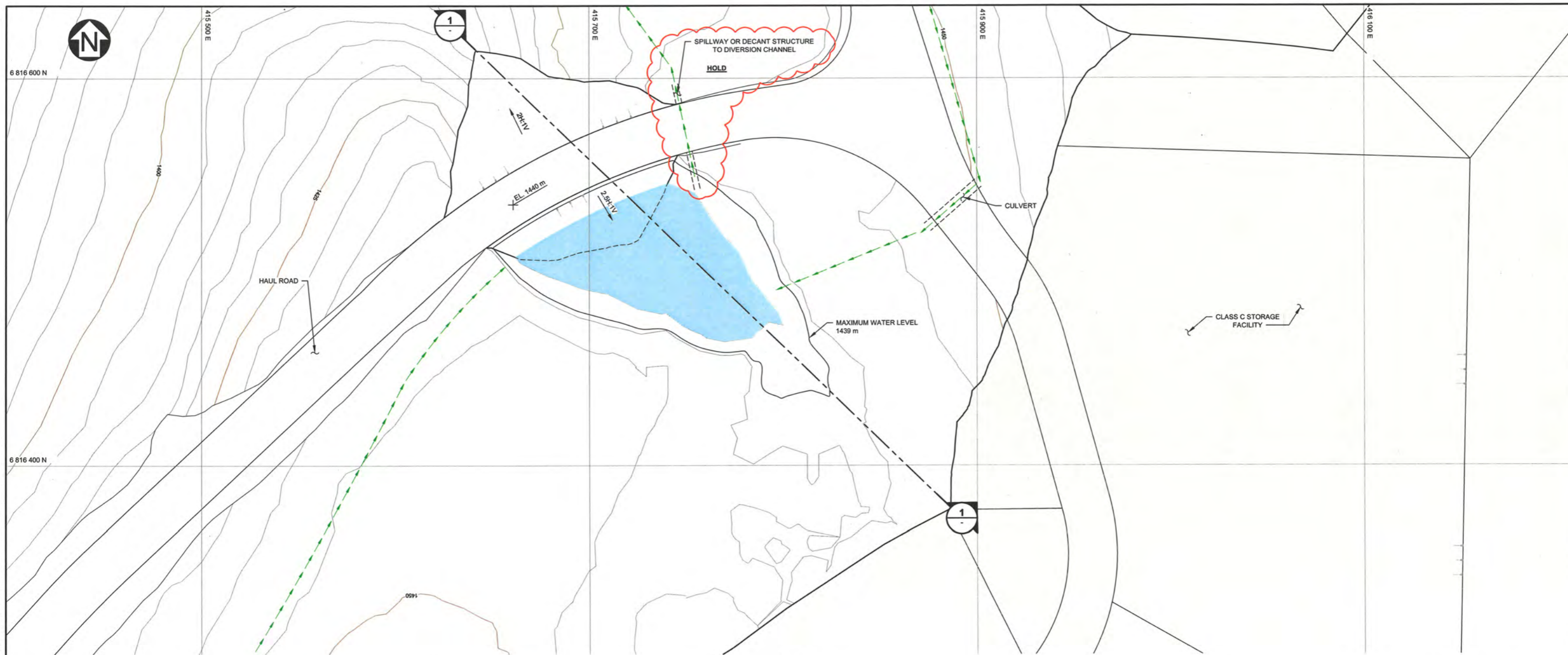
BMC MINERALS (NO. 1) LTD.
 KUDZ ZE KAYAH PROJECT
 WATER MANAGEMENT SYSTEM
 OVERBURDEN STOCKPILE
 COLLECTION POND
 PLAN AND SECTION

DRG. NO.	DESCRIPTION	REV	DATE	DESIGNED	DRAWN	REVIEWED	APPROVED
REFERENCE DRAWINGS				REVISIONS			

REV	DATE	DESCRIPTION	DESIGNED	DRAWN	REVIEWED	APPROVED
0	21OCT16	ISSUED WITH REPORT	MAP	KJM		
REVISIONS				REVISIONS		

PIA NO. VA101-640/2
 DRAWING NO. C540
 REVISION 0

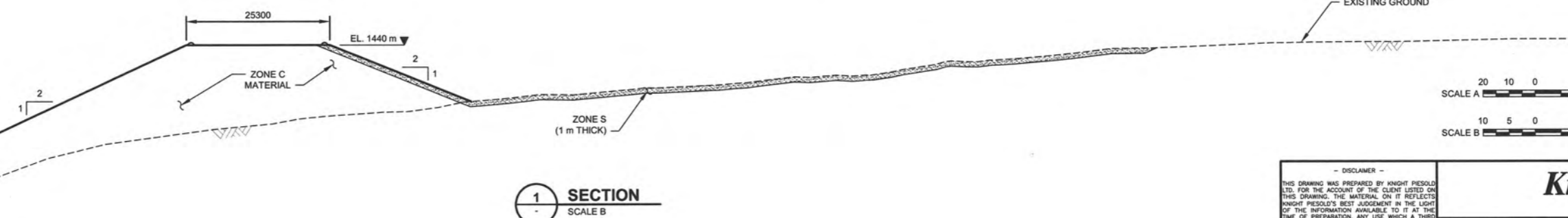
SAVED: M:\1101006402\A\Acad\DWGS\C530\10192016 11:44:31 AM - KMILLER PRINTED: 10/20/2016 11:14:03 AM, C630, KMILLER
 XREF FILE(S): Civil Facilities, C:Road, V:TOPD-CONT-5,0m, VARYDRC, Hydro, IMAGE FILE(S):



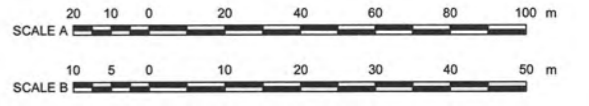
PLAN
SCALE A

LEGEND:

ZONE S (BEDDING LAYER)



SECTION
SCALE B



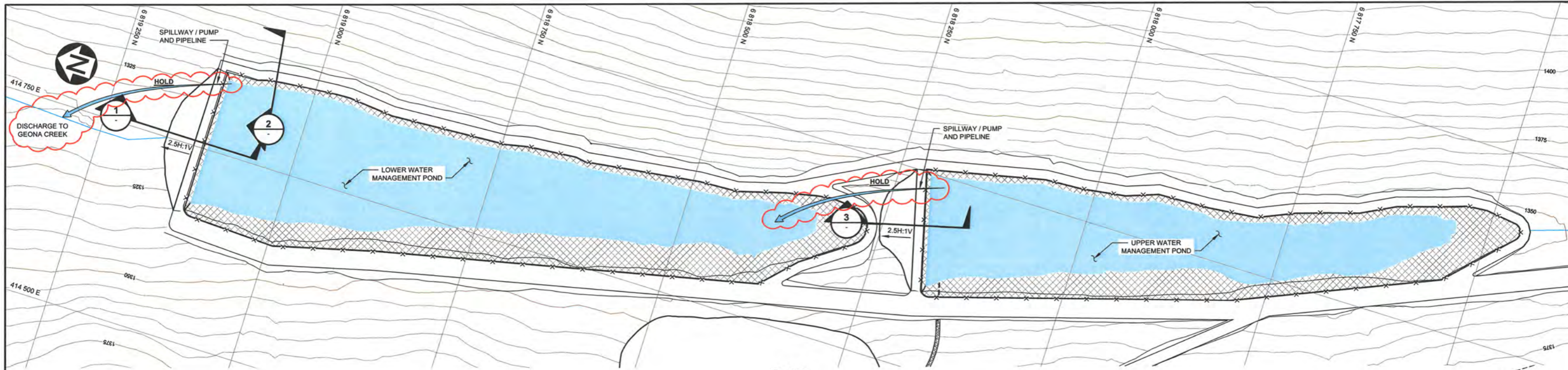
- NOTES:**
- COORDINATE GRID IS UTM NAD 83 9N.
 - TOPOGRAPHIC DETAIL BASED ON INFORMATION PROVIDED BY BMC FEBRUARY 02, 2016.
 - CONTOUR INTERVAL IS 5 METRES.
 - ALL DIMENSIONS ARE IN MILLIMETRES AND ELEVATIONS ARE IN METRES, UNLESS NOTED OTHERWISE.

**FOR INFORMATION ONLY
NOT FOR CONSTRUCTION**

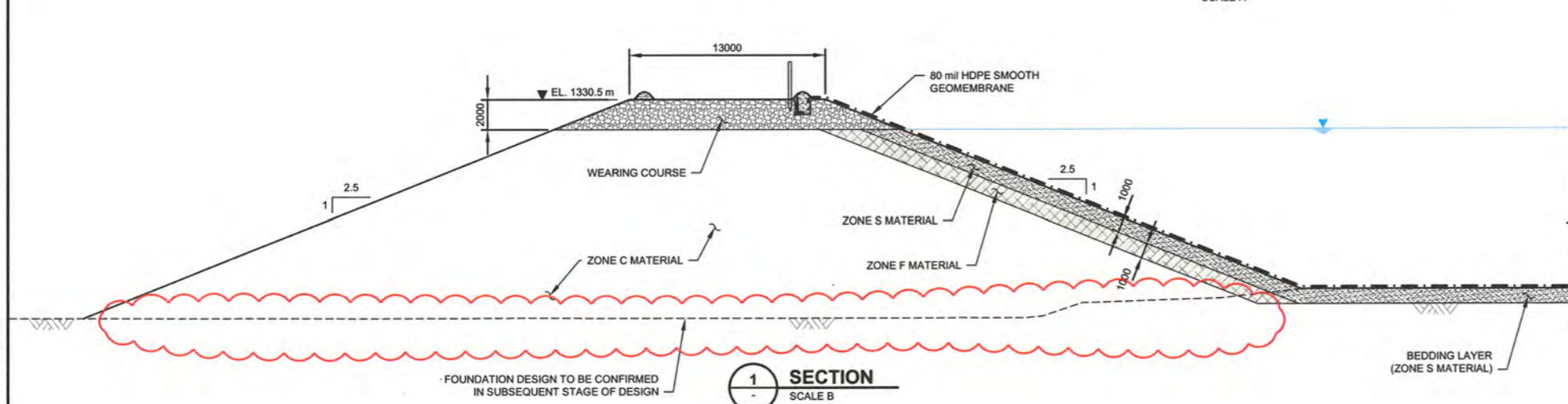
<p align="center">- DISCLAIMER -</p> <p><small>THIS DRAWING WAS PREPARED BY KNIGHT PIESOLD LTD. FOR THE ACCOUNT OF THE CLIENT LISTED ON THIS DRAWING. THE MATERIAL ON IT REFLECTS KNIGHT PIESOLD'S BEST JUDGEMENT IN THE LIGHT OF THE INFORMATION AVAILABLE TO IT AT THE TIME OF PREPARATION. ANY USE WHICH A THIRD PARTY MAKES OF THIS DRAWING OR ANY RELIANCE ON OR DECISIONS TO BE MADE THEREON ARE THE RESPONSIBILITY OF SUCH THIRD PARTY. KNIGHT PIESOLD ACCEPTS NO LIABILITY FOR DAMAGES, IF ANY, SUFFERED BY ANY PARTY AS A RESULT OF SUCH USE OR ACTION. BASED ON THE DRAWING, REPRODUCTION OR ELECTRONIC TRANSFER OR REPRODUCTION OF THIS DRAWING IS UNCONTROLLED AND MAY NOT BE THE MOST RECENT REVISION OF THIS DRAWING.</small></p>		<p>Knight Piesold CONSULTING</p>	
		<p>BMC MINERALS (NO. 1) LTD.</p>	
		<p>KUDZ ZE KAYAH PROJECT</p>	
		<p>WATER MANAGEMENT SYSTEM CLASS C STORAGE FACILITY COLLECTION POND PLAN AND SECTION</p>	
<p align="center"> </p>	<p>PIA NO.</p> <p>VA101-640/2</p>	<p>DRAWING NO.</p> <p>C530</p>	<p>REVISION</p> <p>0</p>

DRG. NO.	DESCRIPTION	REV	DATE	DESIGNED	DRAWN	REVIEWED	APPROVED
	REFERENCE DRAWINGS						
	REVISIONS						

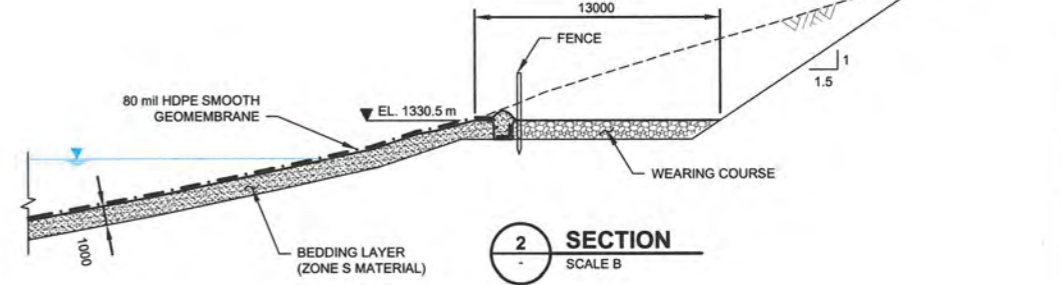
REV	DATE	DESCRIPTION	DESIGNED	DRAWN	REVIEWED	APPROVED
0	21OCT16	ISSUED WITH REPORT	MAP	KJM		
		REVISIONS				



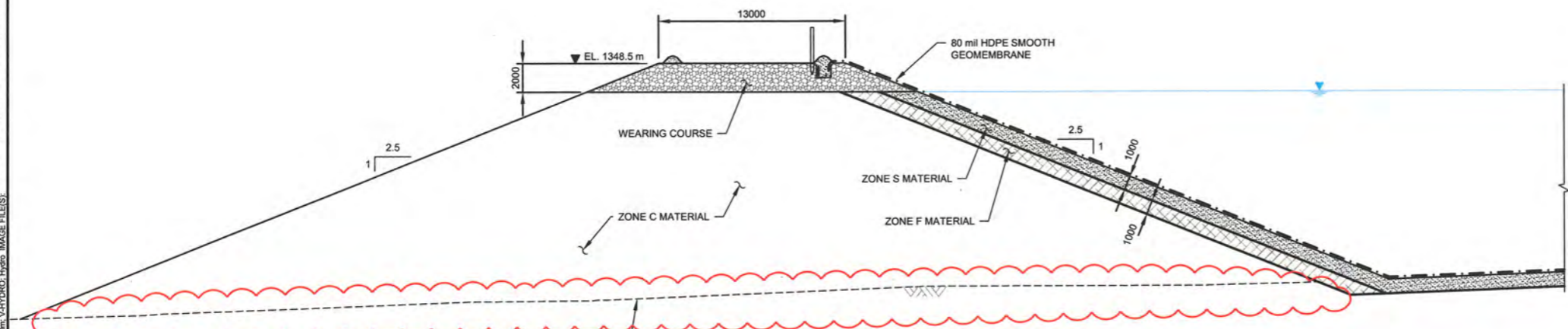
PLAN
SCALE A



1 SECTION
SCALE B

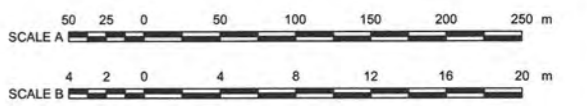


2 SECTION
SCALE B



3 SECTION
SCALE B

- LEGEND:**
- HDPE GEOMEMBRANE (PLAN)
 - HDPE GEOMEMBRANE (PROFILE)
 - RIPRAP ARMOURING
 - ZONE F
 - ZONE S (BEDDING LAYER)
 - WEARING COURSE
 - FENCE LINE



- NOTES:**
- COORDINATE GRID IS UTM NAD 83 9N.
 - TOPOGRAPHIC DETAIL BASED ON INFORMATION PROVIDED BY BMC FEBRUARY 02, 2016.
 - CONTOUR INTERVAL IS 5 METRES.
 - ALL DIMENSIONS ARE IN MILLIMETRES AND ELEVATIONS ARE IN METRES, UNLESS NOTED OTHERWISE.

FOUNDATION DESIGN TO BE CONFIRMED IN SUBSEQUENT STAGE OF DESIGN

**FOR INFORMATION ONLY
NOT FOR CONSTRUCTION**

**Knigh Piésold
CONSULTING**

BMC MINERALS (NO. 1) LTD.

KUDZ ZE KAYAH PROJECT

**WATER MANAGEMENT SYSTEM
WATER MANAGEMENT PONDS
PLAN AND SECTIONS**

DISCLAIMER

THIS DRAWING WAS PREPARED BY KNIGHT PIESOLD LTD. FOR THE ACCOUNT OF THE CLIENT LISTED ON THIS DRAWING. THE MATERIAL ON IT REFLECTS KNIGHT PIESOLD'S BEST JUDGEMENT IN THE LIGHT OF THE INFORMATION AVAILABLE TO IT AT THE TIME OF PREPARATION. ANY USE WHICH A THIRD PARTY MAKES OF THIS DRAWING, RELYING ON OR DECISIONS TO BE MADE BASED THEREON, THE RESPONSIBILITY OF SUCH THIRD PARTIES. KNIGHT PIESOLD ACCEPTS NO LIABILITY FOR DAMAGES, IF ANY, SUFFERED BY ANY PARTY AS A RESULT OF ANY SUCH USE. THIS DRAWING IS A REGISTERED DOCUMENT AND ANY UNCONTROLLED REPRODUCTION OF THE DRAWING IS UNCONTROLLED AND MAY NOT BE THE MOST RECENT REVISION OF THIS DRAWING.

L.J. GALBRAITH
TERRITORY
ENGINEER
027 20/16

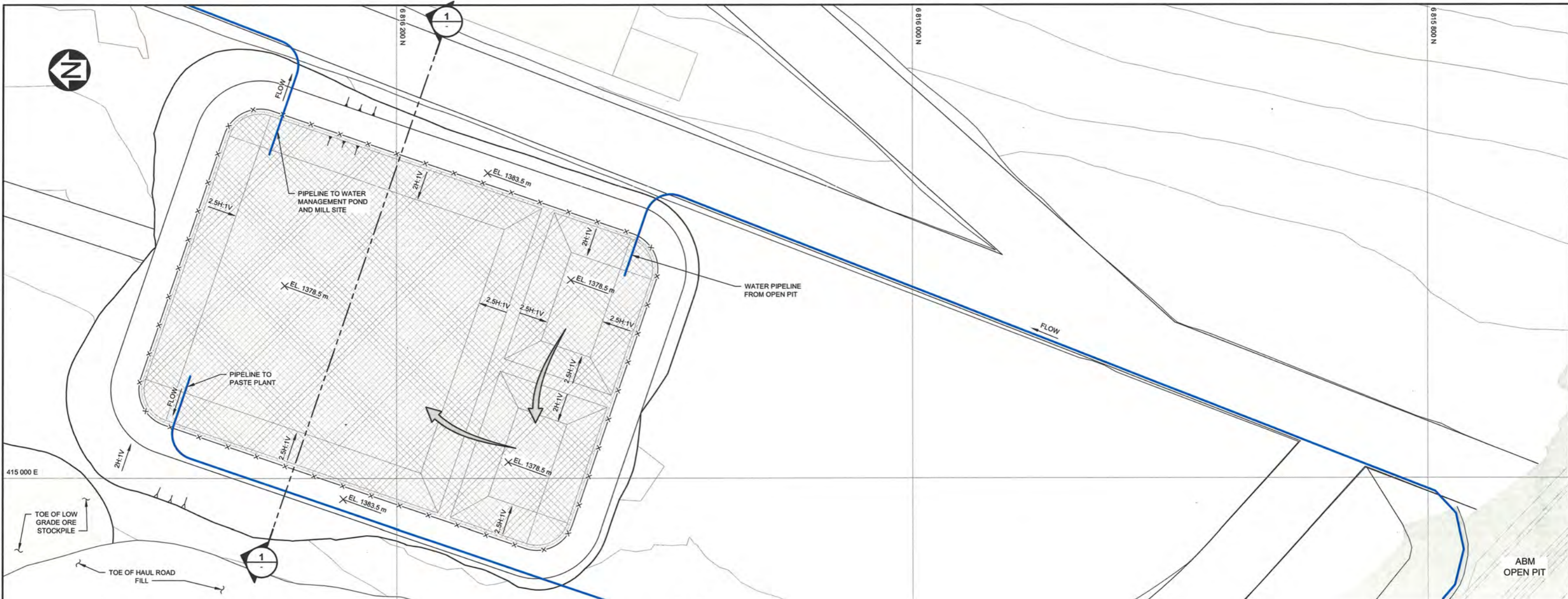
PIA NO. **VA101-640/2**

DRAWING NO. **C500**

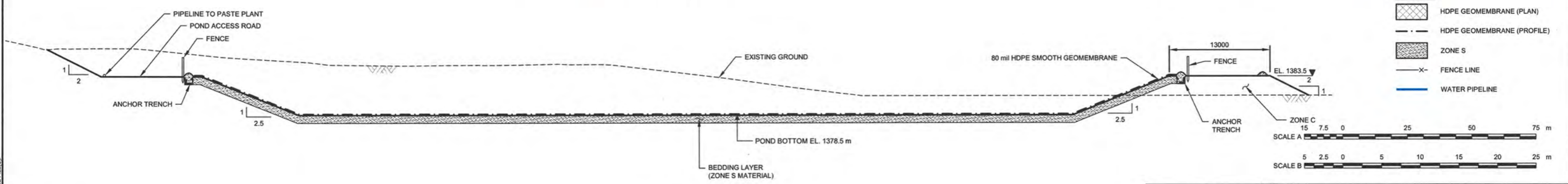
REVISION **0**

DRG. NO.	DESCRIPTION	REV	DATE	DESIGNED	DRAWN	REVIEWED	APPROVED	REV	DATE	DESCRIPTION	DESIGNED	DRAWN	REVIEWED	APPROVED
	REFERENCE DRAWINGS							0	21OCT16	ISSUED WITH REPORT	MAP	KJM		
	REVISIONS													
	REVISIONS													

SAVED: M:\1101006402\A\Acad\DWGS\C500\C500_10/19/2016 10:10:43 AM - KMILLER PRINTED: 10/20/2016 11:08:28 AM, C500, KMILLER
 XREF FILES: C:\Users\kmiller\OneDrive\Documents\VA101-640\2.dwg, V:\TOP\CONTR\5.dwg, V:\VARD\02\1.dwg, IMAGE FILESET

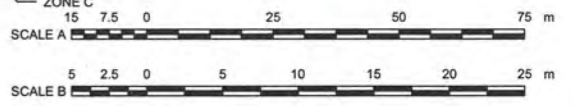


PLAN
SCALE A



SECTION
SCALE B

- LEGEND:**
- HDPE GEOMEMBRANE (PLAN)
 - HDPE GEOMEMBRANE (PROFILE)
 - ZONE S
 - FENCE LINE
 - WATER PIPELINE



- NOTES:**
1. COORDINATE GRID IS UTM NAD 83 9N.
 2. TOPOGRAPHIC DETAIL BASED ON INFORMATION PROVIDED BY BMC FEBRUARY 02, 2016.
 3. CONTOUR INTERVAL IS 5 METRES.
 4. DIMENSIONS ARE IN MILLIMETRES AND ELEVATIONS ARE IN METRES, UNLESS NOTED OTHERWISE.
 5. PIT RIM POND STORAGE REQUIREMENT TO BE CONFIRMED IN FUTURE STUDIES.

**FOR INFORMATION ONLY
NOT FOR CONSTRUCTION**

- DISCLAIMER -

THIS DRAWING WAS PREPARED BY KNIGHT PIESOLD LTD. FOR THE ACCOUNT OF THE CLIENT LISTED ON THIS DRAWING. THE FACILITY OR IT REFLECTS KNIGHT PIESOLD'S BEST JUDGEMENT IN THE LIGHT OF THE INFORMATION AVAILABLE TO IT AT THE TIME OF PREPARATION. ANY USE WHICH A THIRD PARTY MAKES OF THIS DRAWING, OR ANY RELIANCE ON OR DECISIONS TO BE MADE THEREFROM, ARE THE RESPONSIBILITY OF SUCH THIRD PARTY. KNIGHT PIESOLD ACCEPTS NO LIABILITY FOR DAMAGES, DIRECT, INCIDENTAL OR OTHERWISE, AS A RESULT OF SUCH USE. REPRODUCTION OF THIS DRAWING OR ANY PART THEREOF WITHOUT THE WRITTEN PERMISSION OF KNIGHT PIESOLD IS STRICTLY PROHIBITED. THIS DRAWING IS UNCONTROLLED AND MAY NOT BE THE MOST RECENT REVISION OF THIS DRAWING.

Knicht Piesold
CONSULTING

BMC MINERALS (NO. 1) LTD.

KUDZ ZE KAYAH PROJECT

WATER MANAGEMENT SYSTEM

**PIT RIM POND
PLAN AND SECTION**

L. GALBRAITH
TERRITORY
ENGINEER
02/20/16

DRG. NO.	DESCRIPTION	REV	DATE	DESCRIPTION	DESIGNED	DRAWN	REVIEWED	APPROVED
REFERENCE DRAWINGS				REVISIONS				

REV	DATE	DESCRIPTION	DESIGNED	DRAWN	REVIEWED	APPROVED
0	21OCT'16	ISSUED WITH REPORT	MAP	KJM	[Signature]	[Signature]
REVISIONS				REVISIONS		

PIA NO. **VA101-640/2** DRAWING NO. **C545** REVISION **0**

SAVED: M:\10100640\02\A\CAD\DWG\SS\C545_10\19\2016 11:51:21 AM . KMILLER PRINTED: 10/20/2016 11:17:28 AM. C545_KMILLER
 XREF FILE(S): Civil Facilities_V2\PC\CONT-5.dwg; C-Road_Hydro_Hydro_MILL SITE IMAGE FILE(S):