

January 18, 2008

Chief Liard MacMillan  
Liard First Nation  
Box 386  
Watson Lake, YT  
YOA 1C0

Dear Chief MacMillan:

**Subject: North American Tungsten's MacTung Property and meetings with  
the Liard First Nation.**

North American Tungsten Corporation (NATC) is currently planning to develop its MacTung property at the Macmillan Pass, Yukon, located off the North Canal Road. Therefore, NATC will be submitting a Project Description and an application under the *Yukon Environmental and Socio-economic Assessment Act (YESAA)*.

NATC understands that the MacTung property is located within your traditional territory. NATC would therefore be pleased to meet with the Liard First Nation Chief and Council to discuss the proposed project. NATC would also be very pleased to invite your members to attend additional information meetings, if you feel this would be beneficial. At these meetings NATC would work with the First Nation members to identify environmental, social, and economic areas of interests and investigate methods to ensure that the project proceeds in the most positive way possible.

If agreeable, NATC representatives would meet with Liard First Nation Chief and Council in the middle of February to discuss the project and the best way to liaise with the your members. Our consultant, EBA Engineering Consultants Ltd., will make the necessary arrangements on our behalf and will contact your office within the next few days.

Yours sincerely,  
North American Tungsten Corporation Ltd.



Mr. Wade Stogran  
Vice-President of Environmental and Corporate Affairs  
Email: [wstogran@natungsten.com](mailto:wstogran@natungsten.com)

Cc: Yukon Environmental and Socio-Economic Assessment Board

# Meeting Minutes

**North American  
Tungsten Corporation  
Ltd.**

Purpose: Liard First Nation – MacTung Property

Date: January 29, 2008

Time: 1300 hrs

Location: North American Tungsten Boardroom, 1640-1188 West Georgia Street, Vancouver, BC

Attendees: Chief Liard MacMillan – Chief of Liard First Nation (LFN)  
Anne Maje-Raider – Ex-Chief of LFN  
Ron Mackie – Technical Expert  
Mary Porter – LFN Development Corporation (LFNDC)  
Jim Wolftail – LFN Land and Resource Portfolio  
Laurie Allen – LFN Director of Land and Resources and Land Claims  
Darrell Stuart – LFN Justice Portfolio  
Alex Morisson – General Manager of LFNDC  
Trevor Harding – Consultant  
Randy Lewis – Consultant, Capacity Building, LFNDC Mining and Reclamation

Steven Leahy – Chairman and Chief Executive Officer  
Britt Reid - Chief Operating Officer  
Wade Stogran – Vice President Environmental and Corporate Affairs

---

Steven Leahy: Need to focus on high level discussions.  
Need good agreement instead of CEPA or MOU.  
Moving forward, NAT needs certainty.  
Would like to investigate LFN making inuksuks from CanTung ore for distribution by IOC.

Chief Liard MacMillan: Caring for the people is the first priority.  
Want to be a one window approach to FN interface.  
LFN part of Kaska First Nation.  
100% overlap of traditional lands with RRDC.  
There are RRDC members that are included in LFN.  
Want to maintain some level of autonomy and self government.  
In the past Ross River has acted on LFN behalf for mining but it hasn't worked well.  
No other party can represent LFN.  
If mining wants to operate in traditional territory then they will have to deal with LFN.  
Yukon Zinc – Wolverine Project was negotiated with RRDC and they received most of the benefits from the CEPA.  
Selwyn Resources want to negotiate with LFN and RRDC at the same time.  
LFN cant move forward on oil and gas without RRDC.  
LFN and RRDC are in negotiations to share.

**NORTH AMERICAN TUNGSTEN CORPORATION LTD**  
A WORLD CLASS TUNGSTEN COMPANY



Mactung – the future

February 19, 2008

**NORTH AMERICAN TUNGSTEN CORPORATION LTD**  
A WORLD CLASS TUNGSTEN COMPANY

4

**North American Tungsten Corporation Ltd**

- Why Tungsten?
- North American Tungsten
- Cantung
- Mactung

TSX VENTURE EXCHANGE: NTC

**NORTH AMERICAN TUNGSTEN CORPORATION LTD**  
A WORLD CLASS TUNGSTEN COMPANY

2

**Why Tungsten?**

TSX VENTURE EXCHANGE: NTC

**NORTH AMERICAN TUNGSTEN CORPORATION LTD**  
A WORLD CLASS TUNGSTEN COMPANY

4

**Unique Metal**

- Tungsten is unique – hardest metal – highest melting temperature – more dense than lead and uranium – corrosion resistant – environmentally benign.
- Tungsten is mostly used in hard metal construction but has many existing and growing applications:
  - Lead Replacement
  - Radiation Shielding
  - Electronics
  - Ballistics
- Many tungsten applications have no substitution and do not provide a scrap source i.e., tungsten carbide drill bits.

TSX VENTURE EXCHANGE: NTC

**NORTH AMERICAN TUNGSTEN CORPORATION LTD** A WORLD CLASS TUNGSTEN COMPANY

### Tungsten Industrial Products

TSX VENTURE EXCHANGE: NTC

**NORTH AMERICAN TUNGSTEN CORPORATION LTD** A WORLD CLASS TUNGSTEN COMPANY

### Applications

2006 Ford Tungsten GT Limited Edition

TSX VENTURE EXCHANGE: NTC

**NORTH AMERICAN TUNGSTEN CORPORATION LTD** A WORLD CLASS TUNGSTEN COMPANY

### Applications

BEHETTA 391  
 IMP: C15, 8 80 YDS  
 TWS: 4, 25, 02, 2, 70"  
 #5 10 1240 FFG  
 14K120 90%

TSX VENTURE EXCHANGE: NTC

**NORTH AMERICAN TUNGSTEN CORPORATION LTD** A WORLD CLASS TUNGSTEN COMPANY

### APT (ammonium para tungstate) Price

Year	APT Price (US\$/MTU)
2001	~75
2002	~55
2003	~65
2004	~95
2005	~265
2006	~245
2007	~255

TSX VENTURE EXCHANGE: NTC

2

**NORTH AMERICAN TUNGSTEN**  
CORPORATION LTD

A WORLD CLASS TUNGSTEN COMPANY

# North American Tungsten

TSX VENTURE EXCHANGE: NTC

**NORTH AMERICAN TUNGSTEN**  
CORPORATION LTD

A WORLD CLASS TUNGSTEN COMPANY

## North American Tungsten


- Head Office in Vancouver
- Project office in Whitehorse
- Operating mine – Cantung
- 200+ employees
- Mine in development – Mactung

TSX VENTURE EXCHANGE: NTC

**NORTH AMERICAN TUNGSTEN**  
CORPORATION LTD

A WORLD CLASS TUNGSTEN COMPANY

## Property Locations



TSX VENTURE EXCHANGE: NTC

**NORTH AMERICAN TUNGSTEN**  
CORPORATION LTD

A WORLD CLASS TUNGSTEN COMPANY

## Cantung / Mactung



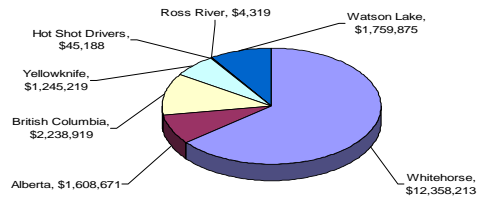
TSX VENTURE EXCHANGE: NTC

# Cantung



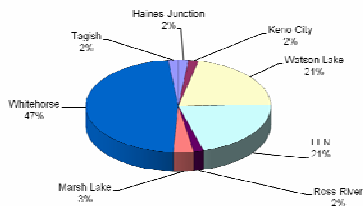
## Cantung

**Cantung - Purchase Values by Community 2005 - 2007**



## Cantung Yukon Employees (57/200)

**Yukon Employees at Cantung January 2008**



# Mactung



**Mactung Deposit**

- Over \$25.0 million spent on the Mactung Deposit
- Estimated production startup in 2012
- World's largest known high grade tungsten ore body
- Estimated 10 year underground mine life
- Potential additional 20 years



**Mactung Deposit**

- 89% of mineral resource in Yukon
- Underground mine operation, camp, site infrastructure, mill, tailings disposal and water supply in Yukon
- Site access alternatives under study
  - (1) Yukon via new road from Mac Pass Airstrip
  - (2) NWT access over existing access road
  - (3) Air service alternatives MacPass or Tishu River, NWT



**Mactung**



Mactung deposit  
View of Mt. Sagar looking east  
and southwest toward the deposit. (Photo: NTC)



**Mill Conception**



Mill Conception  
3D rendering of mill



### Mactung



### Mactung Benefit to the Community

- Direct employment and potential associated businesses
- Education and Training
- Tax Revenue
- While caring for the environment and supporting traditional ways



### Mactung Benefit to the Community

- Direct employment and potential associated businesses
  - Transportation – Hot shots and cargo
  - Food services
  - Camp and vehicle maintenance
  - Environmental monitoring



### Mactung Benefit to the Community

- Education and Training
  - Basic training as required
  - Training in equipment operations
  - Training for surface and underground
  - Health and Safety training
  - Apprenticeship potential







A WORLD CLASS TUNGSTEN COMPANY

### Mactung Benefit to the Community

- The project will pay taxes and royalties to the federal and Yukon Government
- Significant workforce during construction
- There will be approximately 250 direct employees and 30 contract employees
- There will be secondary jobs and businesses supported
- The project will allow the development of infrastructure such as roads, bridges, etc.
- Mactung will contribute about three round trips a day including concentrate and supply trucks



TSX VENTURE EXCHANGE: NTC



A WORLD CLASS TUNGSTEN COMPANY

### Mactung Environmental Vision

- Environment
  - Compliant with laws and international standards
    - Developed in consultation with government and local communities
    - Water quality maintained during and following operations
    - Mine closure planned and executed to minimize impacts



TSX VENTURE EXCHANGE: NTC



A WORLD CLASS TUNGSTEN COMPANY

### Mactung Environmental Vision

- Environmental Studies
  - Fisheries and Aquatic Resources
  - Archaeological Investigations
  - Vegetation and Ecosystem Land Classification
  - Rare Plant Survey and Ecosystem Land Classification Update



TSX VENTURE EXCHANGE: NTC



A WORLD CLASS TUNGSTEN COMPANY

### Mactung Environmental Vision

- Environmental Studies
  - Terrain and Surficial Geology
  - Wildlife
  - Hydrometeorological Survey
  - Water Quality Sampling Program



TSX VENTURE EXCHANGE: NTC



A WORLD CLASS TUNGSTEN COMPANY

### Environmental Studies - Wildlife



TSX VENTURE EXCHANGE: NTC



A WORLD CLASS TUNGSTEN COMPANY

### Environmental Studies - Hydrology



TSX VENTURE EXCHANGE: NTC



A WORLD CLASS TUNGSTEN COMPANY

### Environmental Studies - Archaeological

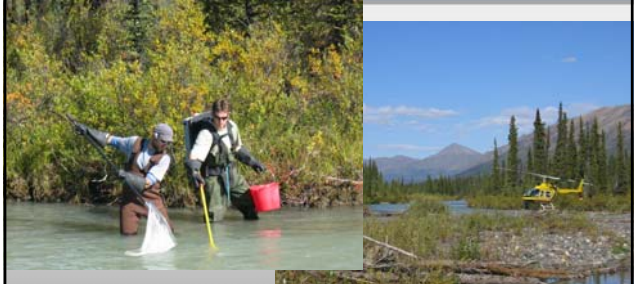


TSX VENTURE EXCHANGE: NTC



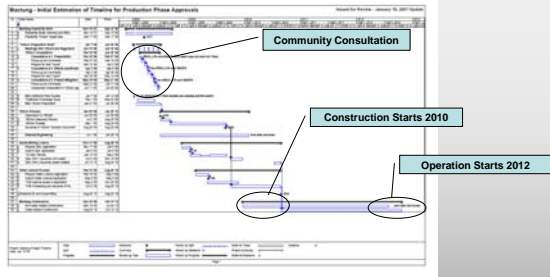
A WORLD CLASS TUNGSTEN COMPANY

### Environmental Studies - Fisheries



TSX VENTURE EXCHANGE: NTC

### Mactung Project Schedule



### Louvicourt Mine During Operation



### Louvicourt Mine Following Closure



### Louvicourt Tailings Facilities



**Glenn Rudman**

---

**From:** Wade Stogran [wstogran@natungsten.com]  
**Sent:** Wednesday, May 28, 2008 1:44 PM  
**To:** 'Alex Morrison'  
**Cc:** Glenn Rudman; Bengt Pettersson  
**Subject:** Community consultation with LFN  
**Follow Up Flag:** Follow up  
**Flag Status:** Red

Alex: To confirm earlier discussions regarding conducting community consultations at Watson Lake, KJ Golder could work with EBA to set up meetings in Watson Lake for North American Tungsten. The purpose of the meetings would be to present information on the Mactung mine and answer any questions. I would suggest the KJ Golder discuss the requirements directly with EBA and then send me a quote. I envision that KJ Golder could look after all of the Watson Lake specific arrangements such as distributing pamphlets, booking halls, procuring food, etc. Please ask the KJ Golder representative to contact me also to discuss the arrangements. The phone number for EBA is (867) 668-2071 and the extension for Glenn is 236 and the extension for Bengt is 235.

If you have any questions, please do not hesitate to call at your convenience.

Cheers.

*Wade*

S. Wade Stogran, R.P.Bio.  
Vice-President of Environmental and Corporate Affairs  
North American Tungsten Corporation Ltd.  
#1640 - 1188 West Georgia Street  
Vancouver, British Columbia  
V6E 4A2  
Tel: 604-684-5300  
Fax: 604-684-2992  
Email: wstogran@natungsten.com  
Web Site: www.northamericantungsten.com

## Glenn Rudman

---

**From:** Glenn Rudman  
**Sent:** Monday, June 09, 2008 5:02 PM  
**To:** Alex Morrison (am\_lfndc@yahoo.ca)  
**Cc:** Wade Stogran  
**Subject:** NATC community meetings in Watson Lake

Hello Alex,

I'm contacting you on behalf of North American Tungsten Corporation regarding the possibility of holding community meetings in Watson Lake regarding the Mactung Project (located close to the Yukon /NWT border).

I'm aware there has been some correspondence between you and Wade Stogran about this and I have also spoken with Jeff Bailey regarding the role of Keyehnejuh and Golder.

I would be very happy to make the necessary arrangements for a community meeting in Watson Lake, but I wanted to first check with LFNDC and LFN Chief and Council if we need to agree on the nature and content of the meeting. From the point of view of North American Tungsten, the meeting would be held to inform all attendees about the Mactung Project and seek their views on the project, particularly with respect to the environmental, social and economic implications of the development.

Also, I understand that the Parks Canada Agency has been in contact with LFN regarding potential TK gathering in relation to the proposed extension to the Nahanni National Park. As TK gathering has to be considered in relation to the Mactung Project, there may be opportunities for all of us to work together for maximum efficiency.

I hope we have an opportunity to discuss these topics over the next few days.

Yours sincerely,

Glenn

### **Glenn Rudman B.Sc., M.Sc.**

Environmental Scientist  
p. 867.668.2071 x236 • f. 867.668.4349  
e. [grudman@eba.ca](mailto:grudman@eba.ca)

EBA Engineering Consultants Ltd.  
Calcite Business Centre, Unit 6, 151 Industrial Road  
Whitehorse, Yukon Y1A 2V3 • CANADA

**CREATING AND DELIVERING BETTER SOLUTIONS**

[www.eba.ca](http://www.eba.ca)

## Glenn Rudman

---

**From:** Glenn Rudman  
**Sent:** Wednesday, July 02, 2008 1:07 PM  
**To:** 'Alex Morrison (am\_ifndc@yahoo.ca)'  
**Cc:** 'Wade Stogran'  
**Subject:** MacTung Project Information

**Attachments:** MacTung project information (June 2008).pdf

Hi Alex,

On behalf of North American Tungsten Corporation please find attached some information regarding the MacTung property. I will also deliver some hard copies of this information to your office in Whitehorse and send some copies to the LFN office in Watson Lake.

The handout will be updated over the next couple of months and I will forward copies of the updated information as it becomes available.

If you have any questions please do not hesitate to call me.

Kind regards,

Glenn



MacTung project  
information (J...

### **Glenn Rudman B.Sc., M.Sc.**

Environmental Scientist  
p. 867.668.2071 x236 • f. 867.668.4349  
e. [grudman@eba.ca](mailto:grudman@eba.ca)

EBA Engineering Consultants Ltd.  
Calcite Business Centre, Unit 6, 151 Industrial Road  
Whitehorse, Yukon Y1A 2V3 • CANADA

**CREATING AND DELIVERING BETTER SOLUTIONS**

[www.eba.ca](http://www.eba.ca)

### **Introduction**

North American Tungsten Corporation (NATC) proposes to mine for tungsten at the Mactung property near MacMillan Pass within four years. There are many steps that are required before the mine can move into production, including public consultation at several stages. The information below provides some background on the project proposal and details of people to contact if you would like further information or have any questions about the proposed project.

### **North American Tungsten Corporation – The Company**

NATC is based in Vancouver and is focused on the mining of Tungsten at its Cantung property in NWT and the development of the tungsten deposit at Mactung. The company is a public company and trades on the TSX Venture exchange.

The Company's goals for the Mactung property are:

- To have a feasibility study completed by the Fall 2008
- To reach a production decision by late Fall 2009
- To have a mine and mill in operation in late 2012; producing up to 2,000 tonnes of ore per day

The company is currently raising financing to take the Mactung project into production. NATC has recently announced that Hunan Nonferrous Metals Corporation (HSE:2626; "Hunan Nonferrous"), a company based in China, will acquire approximately 9.9% of the issued and outstanding shares of NATC.

### **Mactung Property – Location, History and Ownership**

The proposed mine site is located in the Yukon very close to the border with NWT, north of MacMillan Pass at latitude 63° 17' N. The site is approximately 250 km by road north east of Ross River, about six hours by vehicle.

The Mactung tungsten deposit, which contains a mineral resource of more than 30 million tonnes, grading 0.88% tungsten trioxide (43-101 compliant report available), is comparable to some of the largest tungsten deposits in the world. The deposit was discovered and staked in 1962 and over the following 20 years an extensive exploration and property evaluation program was completed. Diamond drilling and an exploration adit for bulk sampling and an underground drilling program were completed in 1973. A mineral reserve was delineated that showed that about 90% of the ore body is on the Yukon side of the Yukon and NWT border. Extensive analytical and metallurgical testing was conducted as well as small pilot plant programs to evaluate the economics of the project. Climate and environmental base line data were also collected and analyzed to initiate the permitting process in the early 1980's. At the time, the property did not go into production due to a significant downturn in the price of tungsten caused by the over supply of tungsten to the world market by China.



*Tungsten has many uses including machine parts, fishing weights and armaments.*



In 2005, after two decades of inactivity, NATC resumed work on the project with a 6,000 m surface diamond drilling programme designed to test the extension of the main underground deposit. This led to the new resource estimate in April of 2007 that is quoted above. During the same time period EBA Engineering resumed the baseline environmental studies to support data collected some twenty years before by Amax, a previous owner of the property. This information will be used for environmental assessment and permit applications that are expected to be submitted later this year.



*About 90% of the ore body at MacTung is in the Yukon.*

In May 2007 Wardrop Engineering of Vancouver was retained to review the economics of the project. This work was partly funded by the Yukon Territorial Government. The review was completed in October of 2007 and a final feasibility study is now in progress. Below is a summary of the main features of the proposed mine operation:

### **Mine Construction**

Information regarding the construction of the mine and its associated infrastructure is being developed. Currently, the plan is to start constructing the access road, camp accommodation and power plant in mid-2010. Other facilities include the water pump house, mill and dams. The construction phase is expected to take approximately two years. Further information on the construction phase will be provided later in 2008.

### **Mine Operations**

The mine is planned to deliver ore at the rate of 2,000 tonnes per day and 730,000 tonnes per year for the estimated underground mine life of 10 years. The mined ore will be crushed and delivered to the process plant via a conveyor belt system. NATC is investigating the feasibility of extending the mine life by a further 20 years by using open pit mining methods after the underground mining is completed.

The mine is planned to operate on two 10 hour shifts per day and 365 days per year with a total workforce of approximately 250 people. The anticipated labour crew rotation is three weeks on/three weeks off based on a fly in/fly out schedule. Based on this rotation, the number of staff at the mine at any one time will be approximately 150.

During a pre-production period of approximately two years, two primary ramps will be developed. The ramp near the plant will act as a service corridor for the ore conveyor belt and for personnel and equipment to access the mine. The conveyor connects to an underground crushing station. Another ramp will be used to blow ventilation air into the underground workings. From the ramps, a series of underground access ramps, cross-cuts and drifts will branch out to connect to the ore body.

To mine the ore, Long Hole Blast and Cut & Fill underground mining methods are planned. In sequence with ore extraction, mined-out areas will be stabilized with backfill from dewatered plant tailings and mine waste rock. Remote controlled load-haul-dump equipment will load broken ore into 30 tonne haul trucks. The ore will be hauled to a primary crusher. The empty truck will be loaded with tailings from a nearby stockpile and will then haul the tailings back through another route to backfill the mined area.

### **Process Operations**

Primary crushing will be performed underground with a jaw crusher then conveyed to a coarse ore storage bin at the surface via the main access portal. Secondary and tertiary crushing will be carried out in the processing plant at the surface using cone crushers.



Fine ore will be transported to a fine ore bin in the grinding area then fed to conventional rod mills (for additional crushing) with size classification by screens. The grinding circuit product will go to a thickener, where the thickener underflow will be processed to remove sulphide minerals with wet magnetic separators followed by bulk sulphide flotation.

After the removal of sulphides, the process stream will then be split into three size fractions – coarse, fine and slimes. The products will undergo a gravity concentration process using spirals and tables to produce a scheelite concentrate. The gravity concentrate will then be submitted to a flotation step to further remove sulphide minerals. The clean gravity concentrate will be dewatered to produce a dry product which will be sent to high intensity magnetic separators for final cleaning and then bagged for shipment. The gravity tailings fraction will be thickened in a conventional thickener. Thickener underflow will be processed in a flotation circuit to recover scheelite that is too fine for gravity concentration. Final scheelite flotation concentrate will be dewatered to a dry product and bagged for shipment.

Scheelite flotation tailings will be dewatered using a thickener and filters. The filter cake produced will then either be transported underground by conveyors to be used as backfill, or transported to the dry stacked tailings site on the surface.

It is anticipated that 42% (3.4 million tonnes) of the mine tailings will be returned underground and used as backfill. The remaining tailings will be dry stacked on the surface.

### **Tungsten Markets**

Concentrate is produced and bagged as either clean gravity concentrate or flotation concentrate. Bagged concentrates will be trucked to Edmonton for shipment to Europe, and to Vancouver for shipment to Asia.

### **The Mine and the Environment**

NATC recognizes the importance of environmental stewardship as part of its business practices. The company considers good environmental management to be a corporate priority. Environmental concerns are included in the decision-making process throughout the company.

Sufficient resources will be devoted to environmental protection to ensure that environmental risks are minimized, that the environment and public welfare are protected during and after the company's activities, and that it complies with all regulatory requirements for its operation.

In 2006 and 2007, with assistance from EBA Engineering Consultants Ltd, the company collected baseline environmental data, including information on wildlife (birds, sheep, caribou, moose, fish), water quality, soil, and archaeology. More studies are planned for 2008 for different locations in and close to the property, including groundwater and surface water studies and wildlife surveys.

### **Employment, Training and the Local Economy**

It is anticipated that 250 people will be employed at the mine when it is operating. The jobs will include geologists, engineers, drillers, underground miners, mill operators, heavy equipment operators, maintenance personnel, assayers, environmental scientists, camp cooks



*Excellent environmental stewardship is a corporate priority for NATC.*



*Environmental work such as fish studies is being completed at the MacTung property.*

and managers and auxiliary staff. It is anticipated that most staff will rotate on a three week shift and will be accommodated at the mine during the work shift.

The company will provide appropriate training and education programs for new employees at the mine site. This will include training for specific work duties, health and safety and other related programs. This will build capacity in local communities and improve opportunities for future mining-related employment in the region.

Employment and contracts with local businesses in Ross River, Faro and other communities will increase when the mine moves into production.

### **Mine Reclamation and Closure**

A Mine Abandonment and Reclamation Plan will be developed as part of the process for mine permitting and mine development. The purpose of the plan is to ensure that a minimum area is disturbed during the construction and operation of the mine and that there will be little to no evidence that mining occurred on the site following closure. The execution of the plan will also ensure that there will be no impacts to the environment following the closure of the mine. The general objectives of the plan are to ensure the chemical and physical stability of the site and that the future use and aesthetics of the property are maintained. Progressive reclamation will be conducted at the mine to minimize long and short term impacts and the cost required for final closure. The amount of money required to close the site at any given time by a third party contractor will be made available to the government by NATC prior to construction to ensure that no negative environmental legacy will be left by the mine.

### **Traditional Use in the Area**

NATC appreciates and welcomes the interest and participation of local communities in the exploration and development of the Mactung tungsten deposit. The company is confident that both local communities and the company will benefit from the mutual respect, cooperation and support that are currently enjoyed by both parties.

The area around the Mactung property is used for hunting moose, caribou and bears. Although hunting will not be permitted by NATC within its property, NATC will respect traditional uses of the land in the vicinity of the mine and manage the mine to minimize any adverse effects on the wildlife in the area.

The company recognizes it will be mining within the traditional area of the Kaska and Na-Cho Nyak Dun First Nations and therefore will respect the heritage and the Traditional Knowledge of the area.

### **The Consultation Process**

There are three opportunities for community input regarding the mine proposal.

- Before the project proposal is submitted to the Yukon Environmental and Socio-economic Assessment Board (YESAB);
- During YESAB's assessment process; and
- During the regulatory process for permits and licences

Before regulatory approvals can be issued, the project proposal must be assessed under the Yukon Environmental and Socio-economic Assessment Act (YESAA). This project will be assessed by the Executive Committee of the Yukon Environmental and Socio-economic Assessment Board (YESAB). The process is expected to take approximately one year from the time the project proposal is submitted and the information is deemed adequate for assessment. It is anticipated that the complete project proposal will be submitted to YESAB in late fall, 2008.

Community consultation is an essential element of a project proposal under YESAA. Once the application has been submitted there will be further opportunities to comment on the project through the YESAA process.

Once the YESAA assessment is completed, the company will apply for the permits and licences that are required for the project. For instance, a quartz mining licence and a water licence will be required. A number of other permits and licences will also be required before the mine production can begin. The process for approving some of the permits and licences will also require consultation with communities.

### **Contacts**

If you have any questions or comments about the proposed Mactung project proposal please contact one of the following:

Wade Stogran  
Vice-President of Environmental and Corporate Affairs  
North American Tungsten Corporation  
#1640 – 1188 West Georgia St.  
Vancouver, B.C.  
V6E 4A2  
T: 604-684-5300  
F: 604-684-2992  
E: wstogran@natungsten.com

Glenn Rudman  
EBA Engineering Consultants, Whitehorse  
6 – 151 Industrial Road  
Whitehorse, Yukon  
Y1A 2V3  
T: 867-668-2071 x236  
F: 867-668-4349  
E: grudman@eba.ca

**If you would like to provide comments or ask questions regarding the MacTung Project before the project proposal is submitted to YESAB please contact the above BEFORE September 1, 2008.**

July 8, 2008

W23101110.004

Chief Liard McMillan  
Liard First Nation  
Box 328  
Watson Lake  
Yukon. YOA 1C0

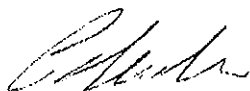
Dear Chief McMillan,

**Subject: Information handouts - MacTung Project, MacMillan Pass, Yukon**

On behalf of North American Tungsten Corporation (NATC), please find enclosed some information handouts regarding the proposed MacTung project that can be made available to your members. If you would like more handouts, please let me know and I'll arrange to have some sent to you. As more information becomes available about the project, updated handouts will be forwarded to you.

If you have any questions about the MacTung project please do not hesitate to contact either myself or Wade Stogran, Vice-President of Corporate and Environmental Affairs, NATC.

Yours sincerely,



Glenn Rudman  
EBA Engineering Consultants Ltd.  
T: 867-668-2071  
E: [grudman@eba.ca](mailto:grudman@eba.ca)

Wade Stogran  
Vice-President of Environmental and Corporate Affairs  
North American Tungsten Corporation  
T: 604-684-5300  
E: [wstogran@natungsten.com](mailto:wstogran@natungsten.com)

Enc. Information Handouts -- MacTung Project



**Glenn Rudman**

---

**From:** Wade Stogran [wstogran@natungsten.com]  
**Sent:** Friday, July 11, 2008 4:27 PM  
**To:** Glenn Rudman; Bengt Pettersson  
**Subject:** FW: Hand Games

fyi

*Wade*

**From:** Alex Morrison [mailto:am\_lfndc@yahoo.ca]  
**Sent:** Friday, July 11, 2008 4:24 PM  
**To:** Wade Stogran  
**Subject:** Re: Hand Games

Wade,

Perfect, we will be able to spend time with council.

A

Alex Morrison  
General Manager  
Liard First Nation Development Corporation

Watson Lake: (867) 536-7611  
WL Fax: (867) 536-2332  
Whitehorse: (867) 668-6850  
Cell: (867) 332-7848

--- On **Fri, 7/11/08**, **Wade Stogran** <wstogran@natungsten.com> wrote:

From: Wade Stogran <wstogran@natungsten.com>  
Subject: Hand Games  
To: "Alex Morrison" <am\_lfndc@yahoo.ca>, lallen@northwestel.net  
Cc: "Britt Reid" <breid@natungsten.com>, "Glenn Rudman" <grudman@eba.ca>, "Bengt Pettersson" <bpettersson@eba.ca>, cscott@natungsten.com  
Received: Friday, July 11, 2008, 7:17 PM

Alex: This is to confirm that I will be arriving in Whitehorse on July 17 at 1300 hrs, renting a car and driving to Watson Lake, staying at the Belvedere Hotel Thursday night. I am booked to leave Whitehorse on Sunday July 20 at about 1900 hrs. Please let me know if you think that this will be sufficient time to set up the booth, etc. I also trust that there will be sufficient time to meet with Chief Liard and Council.

10/29/2008

**Glenn Rudman**

---

**From:** Wade Stogran [wstogran@natungsten.com]  
**Sent:** Tuesday, July 15, 2008 4:59 PM  
**To:** 'Laurie Allen'  
**Subject:** RE: Community meeting with LFN  
**Follow Up Flag:** Follow up  
**Flag Status:** Red

Hi Laurie: That is too bad, I had looked forward to input from the community.

I suppose that I will see you on Friday and we can chat?

Cheers.

*Wade*

**From:** Laurie Allen [mailto:lallen@kaska.ca]  
**Sent:** Tuesday, July 15, 2008 3:50 PM  
**To:** Wade Stogran  
**Subject:** RE: Community meeting with LFN

Hi Wade, I spoke with Chief McMillan in regards to community meetings. At this time, as our community has gone through so much and we are in the middle of summer, Liard First Nation's decision is to not have any meetings in the near future.

Laurie

-----Original Message-----

**From:** Wade Stogran [mailto:wstogran@natungsten.com]  
**Sent:** Wednesday, July 02, 2008 8:55 AM  
**To:** Laurie Allen  
**Subject:** Community meeting with LFN

Laurie: Some time ago we discussed the possibility of attending a meeting during July 7 through 11, or from July 14 through 18. I was wondering if either of these were still a possibility?

Cheers.

*Wade*

S. Wade Stogran, R.P.Bio.  
Vice-President of Environmental and Corporate Affairs  
North American Tungsten Corporation Ltd.  
#1640 - 1188 West Georgia Street  
Vancouver, British Columbia  
V6E 4A2  
Tel: 604-684-5300  
Fax: 604-684-2992  
Email: wstogran@natungsten.com  
Web Site: www.northamericantungsten.com

## Glenn Rudman

---

**From:** Wade Stogran [wstogran@natungsten.com]  
**Sent:** Friday, July 25, 2008 3:45 PM  
**To:** ktreception@northwestel.net  
**Cc:** Glenn Rudman; 'Dale J Eftoda'; 'N.A.T. - Britt Reid'  
**Subject:** Kaska General Assembly

Agnes Ball: It was a pleasure talking with you earlier today and I look forward to seeing you at the Kaska General Assembly. As we discussed, we had a booth at the Handgames and the booth was covered by a small gazebo, which was made available by LFNDC. We also had a table in front of the booth that was provided with the gazebo. The one gazebo with a table should again be sufficient for our booth in this venue. At other similar functions we have sponsored a meal at which we gave a small informal presentation to update people on the project of our progress. If you think this appropriate, please let me know and I can have a small presentation ready.

If you have any questions or comments, please do not hesitate to call or email at your convenience. My contact information is presented below.

Have a good weekend.

Thanks.

*Wade*

S. Wade Stogran, R.P.Bio.  
Vice-President of Environmental and Corporate Affairs  
North American Tungsten Corporation Ltd.  
#1640 - 1188 West Georgia Street  
Vancouver, British Columbia  
V6E 4A2  
Tel: 604-684-5300  
Fax: 604-684-2992  
Email: wstogran@natungsten.com  
Web Site: www.northamericantungsten.com



133 D Industrial Road,  
Whitehorse, YT Y1A 2V2  
Phone: (867) 668-6850 / 668-3030  
Fax: (867) 668-6831/668-3040

## FAX COVER SHEET

**To:** North American Tungsten  
**Fax #:** 604-684-2992  
**Number of Pages:** 5  
**From:** Alex Morrison, General Manager  
**Attention:** Wade Stogran

### Comments:

We thank you forehand for your serious consideration to our request, and we hope you will consider working together to access the many resources available for advancing our initiative.

Sincerely,

Alex Morrison  
General Manger





133 D Industrial Road,  
Whitehorse, YT Y1A 2V2  
Phone: (867) 668-6850 / 668-3030  
Fax: (867) 668-6831/668-3040

August 31, 2008

Wade Stogran  
North American Lungsten  
Suite 1640 1188 West Georgia Street  
Vancouver B.C.  
V6E 4A2

Dear Mr. Stogran,

The Liard First Nation Development Corporation (LFNDC) is hosting a Kaska Mining Forum on Employment & Training on October, 21<sup>st</sup>, 22<sup>nd</sup>, & 23<sup>rd</sup> of 2008 in Watson Lake. I have attached a background document with the proposed agenda for your review. The attachment also outlines our objectives for this event, which is specifically focused on capacity building and human resource requirements for the present and for future mining exploration & development. With the amount of mining activity currently underway in the traditional territory, educating and training a skilled work force is a priority for LFNDC.

LFNDC also feels that this event will provide the mining industry with the opportunity to present an overview of their operation to the students and the general public. More importantly, the mining industry will have the opportunity to present an overview of training, employment, and career opportunities currently being presented within their operation.

Therefore, LFNDC is formally requesting your participation, and a financial contribution of \$2,500 towards the event. I have asked our Project Consultant (Doug Van Bibber) to contact you by phone, or email to discuss our request, and to seek your involvement in the Kaska Mining Forum on Employment & Training.

If you have any questions or concerns, please don't hesitate to call Doug Van Bibber at our office in Whitehorse.

Sincerely,

A handwritten signature in black ink, appearing to be "Alex Morrison".

Alex Morrison  
General Manager

Cc Chief Liard McMillan, Liard First Nation

## North American Tungsten Corporation. Mining Proposal for Mactung

October 2008

### **Introduction**

North American Tungsten Corporation (NATC) proposes to mine and process tungsten ore at the Mactung property near MacMillan Pass, Yukon, within five years. The property location is provided on the (Figure 2) plan. There are many steps that are required before the mine can move into production, including public consultation at several stages. The information below provides background on the project proposal and details of the people to contact if you would like further information or have any questions about the proposed project.

### **North American Tungsten Corporation – The Company**

NATC is based in Vancouver and is focused on mining tungsten ore at its Cantung property in NWT and the development of the tungsten deposit at Mactung. The company is a public company and trades on the TSX Venture exchange.

The Company's goals for the Mactung property are:

- To have a feasibility study completed by the Fall 2008
- To reach a production decision by late Fall 2009
- To have a mine and mill in operation in 2013; processing up to 2,000 tonnes of ore per day

The company is currently raising funds to take the Mactung project into production. NATC announced earlier in 2008 that Hunan Nonferrous Metals Corporation (HSE:2626; "Hunan Nonferrous"), a company based in China, will acquire approximately 9.9% of the issued and outstanding shares of NATC.

### **Mactung Property – Location, History and Ownership**

The proposed mine site is located in the Yukon very close to the border with NWT, north of MacMillan Pass at latitude 63° 17' N. The site is approximately 250 km by road north east of Ross River, about six hours by vehicle. See attached map (Figure 2).

The Mactung tungsten deposit, which contains a mineral resource of 33 million tonnes, grading 0.88% tungsten trioxide (43-101 compliant report available), is comparable to some of the largest tungsten deposits in the world. The deposit was discovered and staked in 1962 and over the following 20 years an extensive exploration and property evaluation program was completed. Diamond drilling and an exploration adit for bulk sampling and an underground drilling program were completed in 1973. Extensive analytical and metallurgical testing was conducted as well as small pilot plant programs to evaluate the economics of the project. Climate and environmental baseline data were also collected and analyzed to initiate the permitting process in the early 1980's. At the time, the property did not go into production due to a significant downturn in the price of tungsten caused by the over supply of tungsten to the world market by China.

In 2005, after two decades of inactivity, NATC resumed work on the project with a 6,000 m surface diamond drilling programme designed to test the extension of the main underground deposit. This led to the new resource estimate in April of 2007 that is quoted above. During the same time period EBA Engineering resumed the baseline environmental studies to support data collected some twenty years before by Amax, a previous owner of the property. This information will be used for environmental assessment and permit applications that are expected to be submitted later this year.



*Tungsten has many uses including machine parts, fishing weights and armaments.*

## North American Tungsten Corporation. Mining Proposal for Mactung

October 2008



*About 90% of the ore body at Mactung is in the Yukon.*

In May 2007 Wardrop Engineering of Vancouver was retained to review the economics of the project. This work was partly funded by the Yukon Territorial Government. The economic update review was completed in October of 2007 and a bankable feasibility study is now in progress. Below is a summary of the main features of the proposed mine operation:

### **Mine Construction**

Construction of the mine infrastructure is scheduled to begin in the first half of 2010 and take approximately 27 months to complete. This will depend on the timely completion of the environmental and socio-economic assessment and permitting processes. The main infrastructure required for the project is listed below and is shown in Figures 1 and 2, attached:

- 48 km of upgraded and new access roads to provide access from the existing North Canal Road to the project site
- Upgrade to the MacMillan Pass airstrip (wider and longer) to accommodate larger aircraft
- A pumping station at a tributary of the Hess River to provide fresh water for the mine
- A water pipeline from the pumping station to the mine site (approximately 10 km)
- On-site waste disposal systems such as a sewage treatment plant and garbage incinerators
- Truckshop/warehouse, administration buildings, mill, bunkhouse complex and mess hall
- A power plant for five diesel generators with heat recovery systems to promote fuel efficiency
- The construction of a dam to collect water from the dry-stack tailings facility, mill and surrounding area for re-use
- A telecommunications system to aid on-site safety and comfort.
- Wind power generation is currently being investigated for the site to off set some diesel consumption

### **Mine Operations**

The mine is planned to process ore at the rate of 2,000 tonnes per day and 730,000 tonnes per year for the estimated underground mine life of 11 years. The mined ore will be crushed and delivered to the process plant via a conveyor belt system. NATC is investigating the feasibility of extending the mine life by a further 15 years by using open pit mining methods after the underground mining is completed.

The mine is planned to operate on two 12 hour shifts per day and 365 days per year with a total workforce of approximately 250 people. The anticipated labour crew rotation is three weeks on/three weeks off, based on a fly in/fly out schedule. Based on this rotation, the number of staff at the mine at any one time will be approximately 150.

During a pre-production period of approximately two and a half years, two primary ramps will be developed. The ramp near the plant will act as a service corridor for the ore conveyor belt and for personnel and equipment to access the mine. The conveyor connects to an underground crushing station. Another ramp will be used to provide ventilation air into the underground workings. From the ramps, a series of underground access ramps, cross-cuts and drifts will branch out to connect to the ore body.

To mine the ore, Long Hole Blast and Cut & Fill underground mining methods are planned. In sequence with ore extraction, mined-out areas will be stabilized with backfill from dewatered mill tailings (waste material from the mill) and mine waste rock. Remote controlled load-haul-dump equipment will load broken ore into 30 tonne haul

## North American Tungsten Corporation. Mining Proposal for Mactung

---

October 2008

trucks. The ore will be hauled to a primary crusher. The empty truck will be loaded with tailings from a nearby stockpile and will then haul the tailings through another route to backfill the mined area.

### Ore Process Operations

The mined ore will be first crushed underground with a jaw crusher then conveyed to a coarse ore storage bin at the surface via the main access portal. Secondary and tertiary crushing will be carried out in the processing plant at the surface using cone crushers. The crushed ore will be transported to a fine ore bin in the grinding area then fed to conventional rod mills (for grinding) and classified according to size using screens.

After the crushing and grinding there will be three processes to extract the scheelite, which is the mineral that contains tungsten. The three processes used are magnetic and gravity separation, and flotation (a process where minerals are brought to the top of a wet mixture and skimmed off the top).

The finely ground ore will be consolidated (thickened). The consolidated material will then be processed to remove unwanted sulphide minerals with magnetic separators and bulk sulphide flotation. The sulphides will become part of the tailings (waste product from the mill).

After the removal of sulphides, the process stream will then be split into three sizes – coarse, fine and slimes. These products will undergo a gravity concentration process using a centrifugal system (spirals) and tables to produce a scheelite gravity concentrate.

The gravity concentrate will then be processed again (flotation step) to further remove sulphide minerals. The clean gravity concentrate will be filtered and dried to remove water (dewatered) to produce a dry product which will be sent to high intensity magnetic separators for final cleaning. The final product is a sandy/silt-sized material which is then bagged for shipment.

The gravity tailings will be thickened. The thickened tailings will be processed in a flotation circuit to recover scheelite that is too fine for gravity concentration. The final scheelite flotation concentrate will be dewatered to a dry product and bagged for shipment (silt/clay-sized particles). Scheelite flotation tailings (the waste product) will be dewatered using presses and filters. The filtered 'cake' will then either be transported underground by conveyors to be used as backfill, or transported to the dry-stacked tailings site on the surface.

It is anticipated that 50% of the mine tailings (waste from the mill) will be returned underground and used as backfill. The remaining tailings will be dry-stacked on the surface. The waste rock produced as part of the underground mining will also be used as backfill material underground.

### Tungsten Markets and Transport

Bagged concentrates will be trucked to Edmonton for shipment to Europe and USA, and to Vancouver for shipment to Asia. Approximately four trucks per day will arrive at and depart from the site. Two trucks will haul the tungsten concentrate (Scheelite), while the other two will haul fuel and supplies. The North Canol Road will be used to transport the concentrate to Ross River, then the Robert Campbell Highway (South) will be used to Watson Lake, then the Alaska Highway.



*Environmental work such as fish studies have been completed at the Mactung property.*

## North American Tungsten Corporation. Mining Proposal for Mactung

---

October 2008

### **The Mine and the Environment**

NATC recognizes the importance of environmental stewardship as part of its business practices. The company considers good environmental management to be a corporate priority. Environmental concerns are included in the decision-making process throughout the company.

Sufficient resources will be devoted to environmental protection to ensure that environmental risks are minimized, that the environment and public welfare are protected during and after the company's activities, and that it complies with all regulatory requirements for its operation.

In 2006 and 2007, with assistance from EBA Engineering Consultants Ltd, the company collected baseline environmental data, including information on wildlife (birds, sheep, caribou, moose, fish), water quality, soil, and archaeology. Further studies were completed in 2008 for different locations in and close to the property and for the proposed access route.

### **Employment, Training and the Local Economy**

It is anticipated that 250 people will be employed at the mine when it is operating. The jobs will include geologists, engineers, drillers, underground miners, mill operators, heavy equipment operators, maintenance personnel, assayers, environmental scientists, camp cooks, managers and auxiliary staff. Many of the workers will be transferred from NATC's existing mine at Cantung in NWT. However, additional personnel will be employed from the Yukon and wider labour market. It is anticipated that most staff will rotate on a three week shift and will be accommodated at the mine during the work shift.

The company will provide appropriate training and education programs for new employees at the mine site. This will include training for specific work duties, health and safety and other related programs. This will build capacity in local communities and improve opportunities for future mining-related employment in the region.

Employment and contracts with local businesses in Ross River, Faro, Whitehorse, and other communities will increase as the mine progresses from the construction phase to the production phase.



*Excellent environmental stewardship is a corporate priority for NATC.*

### **Mine Reclamation and Closure**

A Mine Abandonment and Reclamation Plan will be developed as part of the process for mine permitting and mine development. The purpose of the plan is to ensure that a minimum area is disturbed during the construction and operation of the mine and that the land be returned as close to its natural state as possible after closure. The general objectives of the plan are to ensure the chemical and physical stability of the site and that the future use and aesthetics of the property are maintained. Progressive reclamation will be conducted at the mine to minimize long and short term impacts and the cost required for final closure. The surface tailings will be capped in accordance with industry best practices. The dam and related ageing pond will be decommissioned and the natural drainage pattern will be returned to the site, including making the diverted stream continuous again from its headwaters. The amount of money required to close the site at any given time by a third party contractor will be made available to the government by NATC prior to construction to ensure that no negative environmental legacy will be left by the mine. Periodic inspection and monitoring of the site will be required as per the Metal Mining Effluent Regulations (MMER) for a period of three years following closure.



## **North American Tungsten Corporation. Mining Proposal for Mactung**

---

October 2008

### **Traditional Use in the Area**

NATC appreciates and welcomes the interest and participation of local communities in the exploration and development of the Mactung tungsten deposit. The company is confident that both local communities and the company will benefit from the mutual respect, cooperation and support that are currently enjoyed by both parties.

The area around the Mactung property is used for hunting moose, caribou and bears. Although hunting will not be permitted by NATC within its property, NATC will respect traditional uses of the land in the vicinity of the mine and manage the mine to minimize any adverse effects on the wildlife in the area. The company recognizes it will be mining within the traditional area of the Kaska and Na-Cho Nyak Dun First Nations and therefore will respect the heritage and the Traditional Knowledge of the area.

### **The Consultation Process**

There are three opportunities for community input regarding the mine proposal.

- Before the project proposal is submitted to the Yukon Environmental and Socio-economic Assessment Board (YESAB);
- During YESAB's assessment process; and
- During the regulatory process for permits and licences

Before regulatory approvals can be issued, the project proposal must be assessed under the Yukon Environmental and Socio-economic Assessment Act (YESAA). This project will be assessed by the Executive Committee of the Yukon Environmental and Socio-economic Assessment Board (YESAB). The process is expected to take approximately one year from the time the project proposal is submitted and the information is deemed adequate for assessment. It is anticipated that the complete project proposal will be submitted to YESAB in late fall, 2008.

Community consultation is an essential element of a project proposal under YESAA. Once the application has been submitted there will be further opportunities to comment on the project through the YESAA process.

Once the YESAA assessment is completed and a final decision document is issued by the Government of Yukon and other decision bodies, the company will apply for the permits and licences that are required for the project. For instance, a quartz mining licence and a water licence will be required. A number of other permits and licences will also be required before the mine production can begin. The process for approving some of the permits and licences will also require consultation with communities.

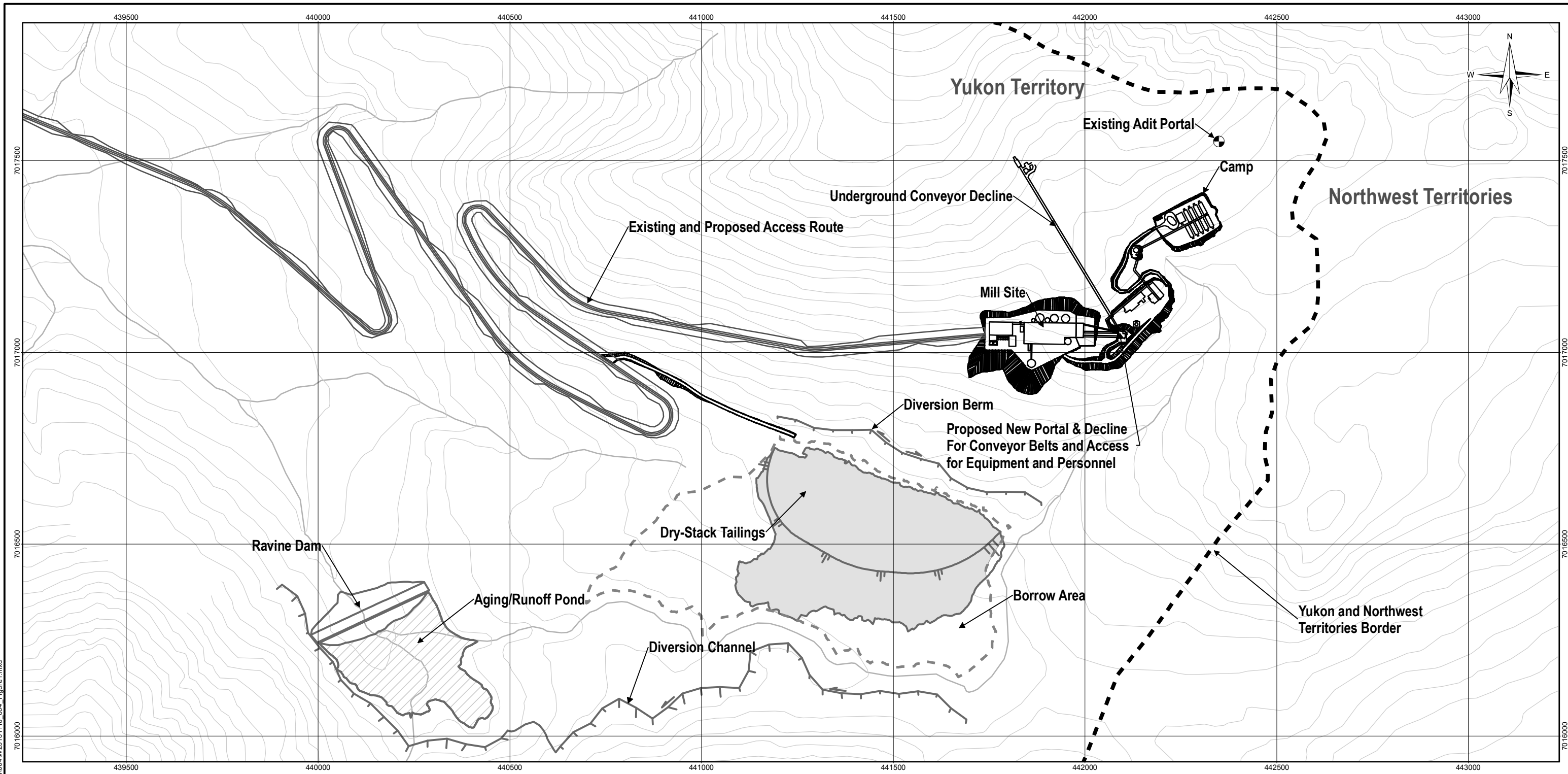
### **Contacts**

If you have any questions or comments about the proposed Mactung project proposal please contact one of the following:

Wade Stogran  
Vice-President of Environmental and Corporate Affairs  
North American Tungsten Corporation  
#1640 – 1188 West Georgia St.  
Vancouver, B.C.  
V6E 4A2  
T: 604-684-5300  
F: 604-684-2992  
E: wstogran@natungsten.com

Glenn Rudman  
Environmental Scientist  
EBA Engineering Consultants, Whitehorse  
6 – 151 Industrial Road  
Whitehorse, Yukon  
Y1A 2V3  
T: 867-668-2071 x236  
F: 867-668-4349  
E: grudman@eba.ca

**If you would like to provide comments or ask questions regarding the Mactung Project before the project proposal is submitted to YESAB, please contact the above BEFORE November 7, 2008.**

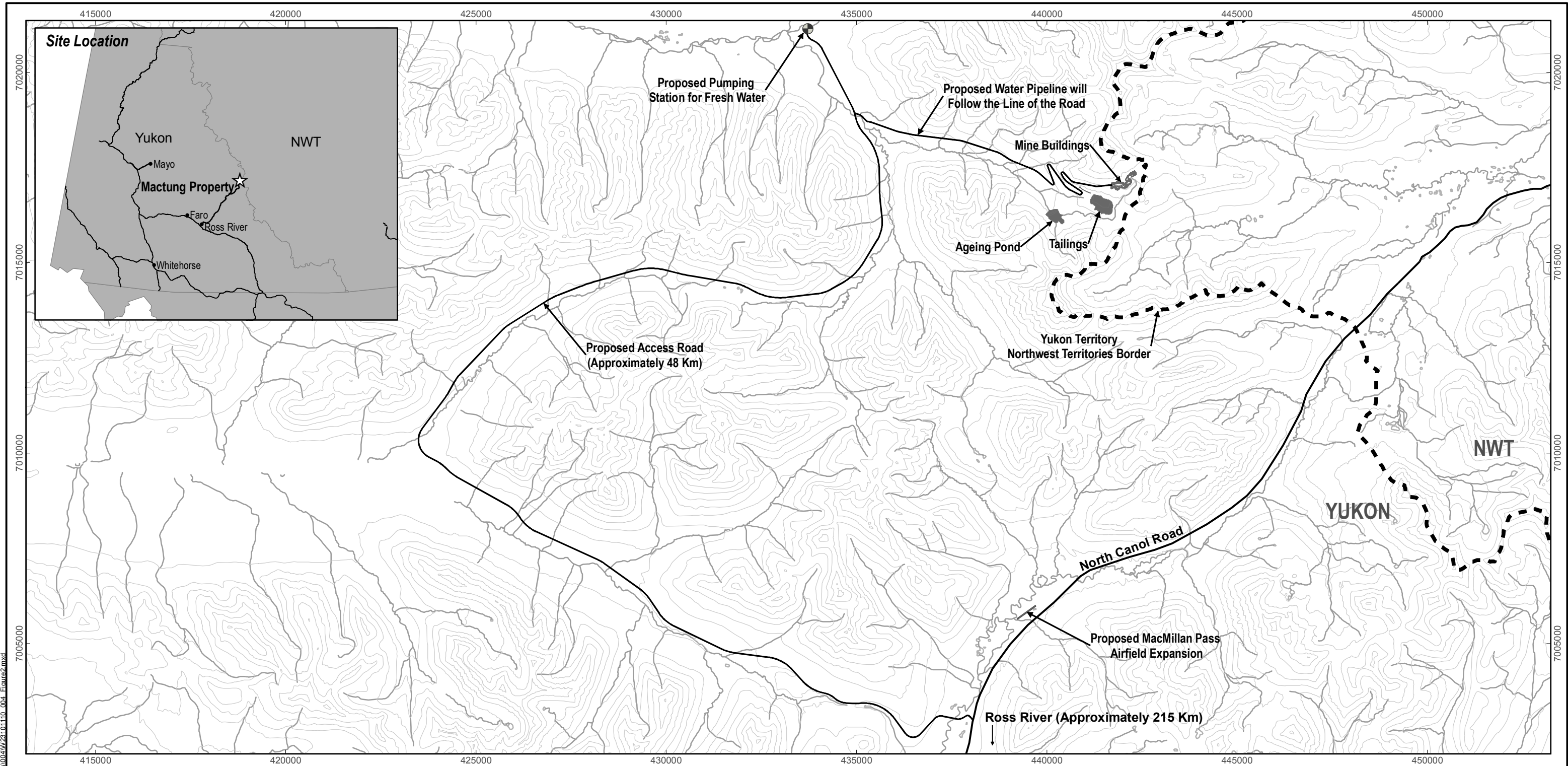


Q:\Vancouver\GIS\ENVIRONMENTAL\W231\W23101110\_Mactung\_APM\Map04\W23101110\_004\_Figure1.mxd

**NOTES**  
Base data source: Wardrop

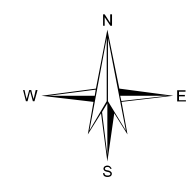
<b>MACTUNG</b>			
<b>Proposed Site Plan</b>			
PROJECTION UTM Zone 9	DATUM NAD83		
Scale: 1:10,000			
Metres			
FILE NO. W23101110_004_Figure1.mxd	EBA Engineering Consultants Ltd.		
PROJECT NO. W23101110.004	DWN MEZ	CKD GR	REV 0
OFFICE EBA-VANC	DATE October 10, 2008		
			<b>Figure 1</b>





G:\Vancouver\GIS\ENVIRONMENTAL\W231\W23101110\_Mactung\_APM\Map04\W23101110\_004\_Figure2.mxd

**NOTES**  
Base data source: Wardrop



MACTUNG			
Proposed Site Layout and Access Roads			
PROJECTION UTM Zone 9	DATUM NAD83		
Scale: 1:100,000			
FILE NO. W23101110_004_Figure2.mxd	EBA Engineering Consultants Ltd.		
PROJECT NO. W23101110.004	DWN MEZ	CKD GR	REV 0
OFFICE EBA-VANC	DATE October 10, 2008		
			<b>Figure 2</b>



**NORTH AMERICAN TUNGSTEN CORPORATION LTD**  
A WORLD CLASS TUNGSTEN COMPANY

**Mactung – the future**



October, 2008

**NORTH AMERICAN TUNGSTEN CORPORATION LTD**  
A WORLD CLASS TUNGSTEN COMPANY

**North American Tungsten**

TSX VENTURE EXCHANGE: NTC

**NORTH AMERICAN TUNGSTEN CORPORATION LTD**  
A WORLD CLASS TUNGSTEN COMPANY


**North American Tungsten**

- Head Office in Vancouver
- Project office in Whitehorse
- Operating mine – Cantung
- 200+ employees
- Mine in development – Mactung

TSX VENTURE EXCHANGE: NTC

**NORTH AMERICAN TUNGSTEN CORPORATION LTD**  
A WORLD CLASS TUNGSTEN COMPANY

**Property Locations**



TSX VENTURE EXCHANGE: NTC

**NORTH AMERICAN TUNGSTEN CORPORATION LTD**  
A WORLD CLASS TUNGSTEN COMPANY

**Cantung / Mactung**

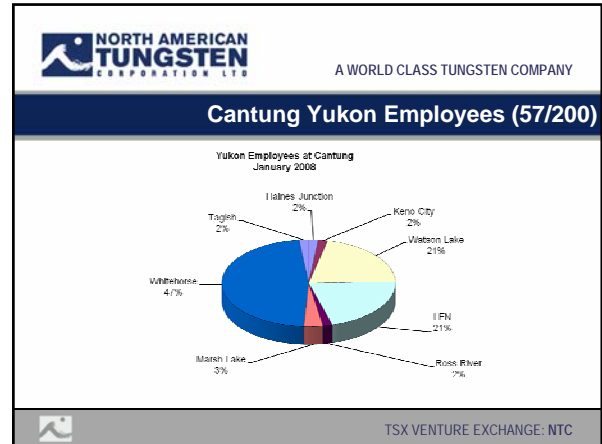
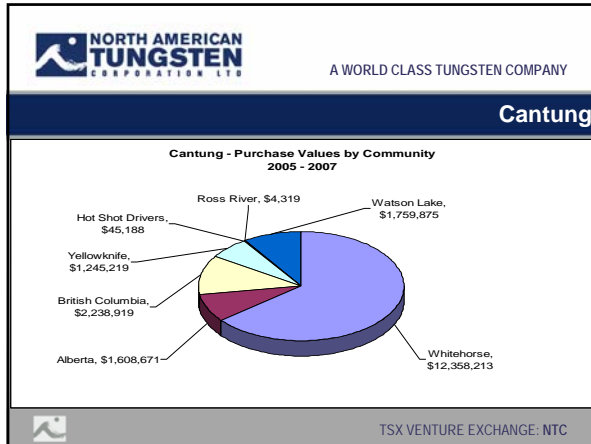


TSX VENTURE EXCHANGE: NTC

**NORTH AMERICAN TUNGSTEN CORPORATION LTD**  
A WORLD CLASS TUNGSTEN COMPANY

**Cantung**

TSX VENTURE EXCHANGE: NTC



**NORTH AMERICAN TUNGSTEN CORPORATION LTD**  
A WORLD CLASS TUNGSTEN COMPANY

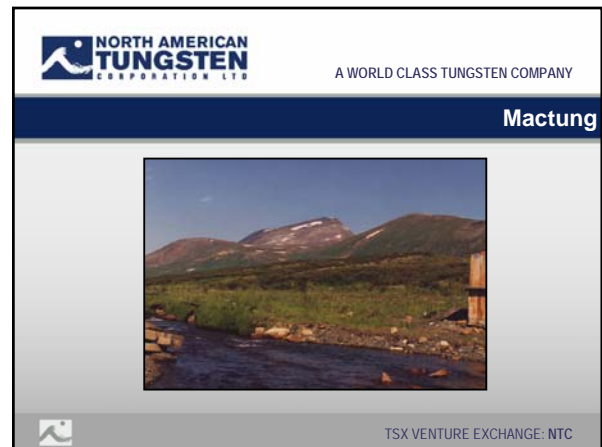
2

# Mactung

TSX VENTURE EXCHANGE: NTC

- NORTH AMERICAN TUNGSTEN CORPORATION LTD**  
A WORLD CLASS TUNGSTEN COMPANY
- ### Mactung Deposit
- Over \$25.0 million spent on the Mactung Deposit
  - Estimated production startup in 2012
  - World's largest known high grade tungsten ore body
  - Estimated 10 year underground mine life
  - Potential additional 20 years
- TSX VENTURE EXCHANGE: NTC

- NORTH AMERICAN TUNGSTEN CORPORATION LTD**  
A WORLD CLASS TUNGSTEN COMPANY
- ### Mactung Deposit
- 89% of mineral resource in Yukon
  - Underground mine operation, camp, site infrastructure, mill, tailings disposal and water supply in Yukon
  - Site access alternatives under study
    - (1) Yukon via new road from Mac Pass Airstrip
    - (2) NWT access over existing access road
    - (3) Air service alternatives MacPass or Tischu River, NWT
- TSX VENTURE EXCHANGE: NTC



**NORTH AMERICAN TUNGSTEN CORPORATION LTD**  
A WORLD CLASS TUNGSTEN COMPANY

**MacMillan Pass Airfield Upgrade**

- The airstrip will be upgraded from a 1500' x 50' strip to a 4000' x 100' strip.
- NATC will upgrade the airstrip and lease it from the Yukon government during the operation of mine. After closure, the airstrip will return to the Yukon Government to operate.

TSX VENTURE EXCHANGE: NTC



**NORTH AMERICAN TUNGSTEN CORPORATION LTD**  
A WORLD CLASS TUNGSTEN COMPANY

**MacMillan Pass Airfield Upgrade**

TSX VENTURE EXCHANGE: NTC

**NORTH AMERICAN TUNGSTEN CORPORATION LTD**  
A WORLD CLASS TUNGSTEN COMPANY

**Mactung Access Road**

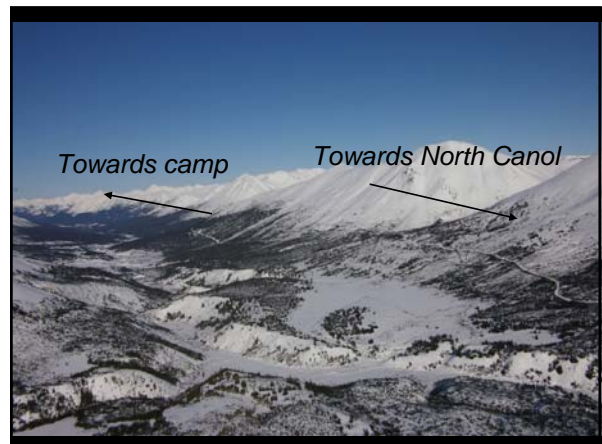
- The Mactung site will be accessible by the Upper Canol road that the Yukon Government is currently upgrading.
- An access road will be constructed from Upper Canol Road to the mill site.
- The access road will be approximately 8 m wide and 35 km long.

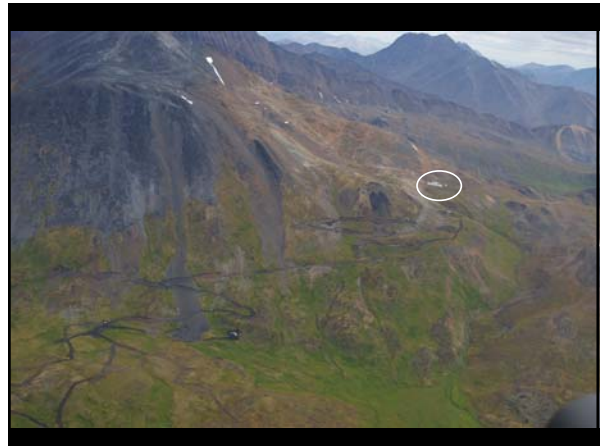
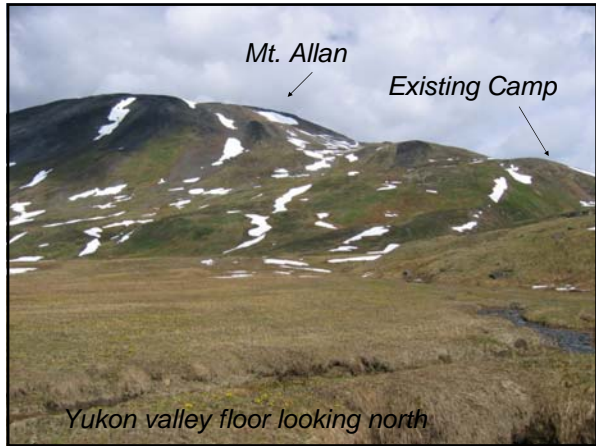
TSX VENTURE EXCHANGE: NTC

**NORTH AMERICAN TUNGSTEN CORPORATION LTD**  
A WORLD CLASS TUNGSTEN COMPANY

**MacMillan Access Road**

TSX VENTURE EXCHANGE: NTC



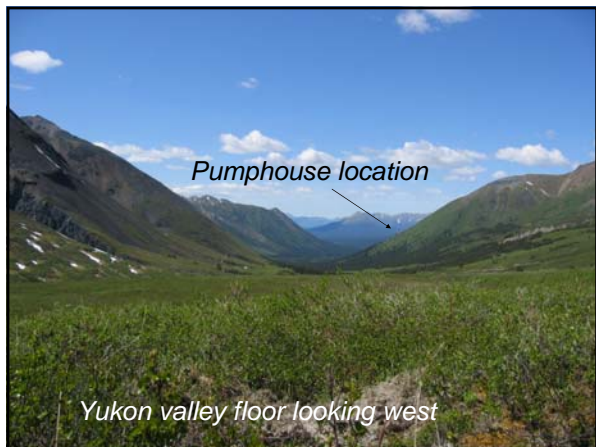


**NORTH AMERICAN TUNGSTEN CORPORATION LTD** A WORLD CLASS TUNGSTEN COMPANY

**Mactung Water Supply**

- Water supply will come from Tributary C of the Hess River by a pipeline.
- The water demand will be approximately 10% of the available flow in the river.

TSX VENTURE EXCHANGE: NTC



**NORTH AMERICAN TUNGSTEN CORPORATION LTD** A WORLD CLASS TUNGSTEN COMPANY

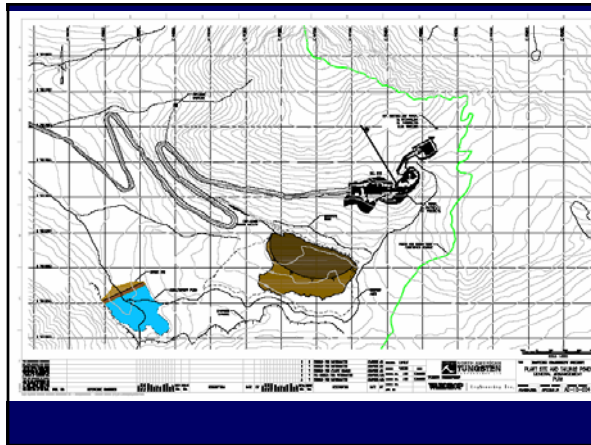
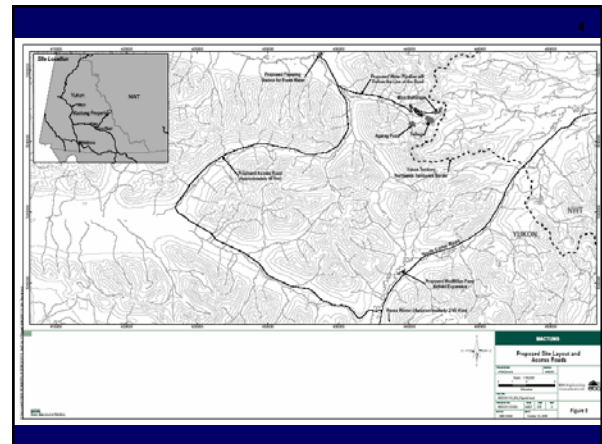
**Mactung Water Supply**

TSX VENTURE EXCHANGE: NTC

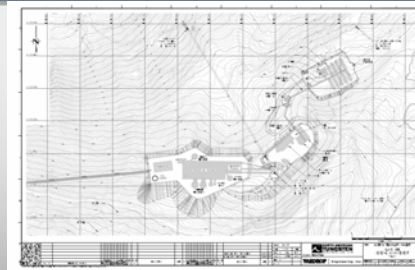


### Mactung Mill Site

- Mill site will consist of the following:
  - Process Mill Building with laboratory
  - Powerhouse
  - Truckshop/Warehouse
  - Administration Building
  - 150 person camp
- All buildings will be connected by an enclosed walkway doubling as a pipe bridge. Pipes with flammable fluids will not be in the enclosure.



### Mactung Mill Site



### Mactung Processing Plant

- The mill will process about 2,000 tonnes per day.
- Three-stage crushing circuit consists of a primary jaw crusher, secondary and tertiary cone crushers.
- Two-stage grinding circuit consists of two rod mills.
- The processing circuit consists of sulphide magnetic separation, bulk sulphide flotation, gravity separation (spirals and tables), scheelite flotation, and scheelite concentrate dewatering.



### Mactung Benefit to the Community

- Direct employment and potential associated businesses
- Education and Training
- Tax Revenue
- While caring for the environment and supporting traditional ways



**NORTH AMERICAN TUNGSTEN CORPORATION LTD**  
A WORLD CLASS TUNGSTEN COMPANY

**Mactung Benefit to the Community**

- Direct employment and potential associated businesses
  - Transportation – Hot shots and cargo
  - Food services
  - Camp and vehicle maintenance
  - Environmental monitoring

TSX VENTURE EXCHANGE: NTC

*Contract type – construction phase*

- Slide removed as confidential

*Peak labour demand during construction. July-August, 2011*

- Slide removed as confidential

*Operating cost summary*

- Slide removed as confidential

*Employment figures, Yukon – 2006 census data*

	Yukon	Ross River	Faro	Mayo	Watson Lake
2006 Census Population	30,372	313	341	248	1,207
% Aboriginal Population	25%	86%	16%	52%	52%
December 2007 "Health Care" Population	32,714	349	372	423	1,596
Total Labour Force	18,895	165	175	150	700
Natural Resource Industry Labour Force	5.1%	21.2%	17.1%	10.0%	11.4%
Trades, Operators & Primary Industry Occupations	19.7%	33.3%	28.6%	26.7%	26.4%
Employment Rate	71%	56%	56%	64%	60%
Unemployment Rate	9.4%	21%	16%	17%	20%

**NORTH AMERICAN TUNGSTEN CORPORATION LTD**  
A WORLD CLASS TUNGSTEN COMPANY

**Mactung Benefit to the Community**

- Education and Training
  - Basic training as required
  - Training in equipment operations
  - Training for surface and underground
  - Health and Safety training
  - Apprenticeship potential

TSX VENTURE EXCHANGE: NTC

**NORTH AMERICAN TUNGSTEN CORPORATION LTD**  
A WORLD CLASS TUNGSTEN COMPANY

**Mactung Benefit to the Community**

- The project will pay taxes and royalties to the federal and Yukon Government
- Significant workforce during construction
- There will be approximately 250 direct employees and 30 contract employees
- There will be secondary jobs and businesses supported
- The project will allow the development of infrastructure such as roads, bridges, etc.
- Mactung will contribute about three round trips a day including concentrate and supply trucks

TSX VENTURE EXCHANGE: NTC

**NORTH AMERICAN TUNGSTEN CORPORATION LTD**  
A WORLD CLASS TUNGSTEN COMPANY

**Mactung Environmental Vision**

- Environment
  - Compliant with laws and international standards
    - Developed in consultation with government and local communities
    - Water quality maintained during and following operations
    - Mine closure planned and executed to minimize impacts

TSX VENTURE EXCHANGE: NTC

**NORTH AMERICAN TUNGSTEN CORPORATION LTD**  
A WORLD CLASS TUNGSTEN COMPANY

**Mactung Environmental Vision**

- Environmental Studies
  - Fisheries and Aquatic Resources
  - Archaeological Investigations
  - Vegetation and Ecosystem Land Classification
  - Rare Plant Survey and Ecosystem Land Classification Update

TSX VENTURE EXCHANGE: NTC

**NORTH AMERICAN TUNGSTEN CORPORATION LTD**  
A WORLD CLASS TUNGSTEN COMPANY

**Mactung Environmental Vision**

- Environmental Studies
  - Terrain and Surficial Geology
  - Wildlife
  - Hydrometeorological Survey
  - Water Quality Sampling Program

TSX VENTURE EXCHANGE: NTC

**NORTH AMERICAN TUNGSTEN CORPORATION LTD**  
A WORLD CLASS TUNGSTEN COMPANY


**Environmental Studies - Wildlife**



TSX VENTURE EXCHANGE: NTC

**NORTH AMERICAN TUNGSTEN CORPORATION LTD**  
A WORLD CLASS TUNGSTEN COMPANY


**Environmental Studies - Hydrology**



TSX VENTURE EXCHANGE: NTC

**NORTH AMERICAN TUNGSTEN CORPORATION LTD** A WORLD CLASS TUNGSTEN COMPANY


### Environmental Studies - Archaeological



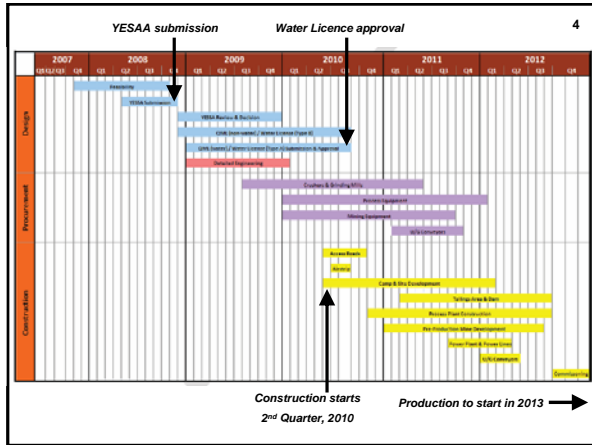
TSX VENTURE EXCHANGE: NTC

**NORTH AMERICAN TUNGSTEN CORPORATION LTD** A WORLD CLASS TUNGSTEN COMPANY

### Environmental Studies - Fisheries



TSX VENTURE EXCHANGE: NTC



**NORTH AMERICAN TUNGSTEN CORPORATION LTD** A WORLD CLASS TUNGSTEN COMPANY

### Mactung Objective

# Our Objective - Working together for the future!

TSX VENTURE EXCHANGE: NTC

**NORTH AMERICAN TUNGSTEN CORPORATION LTD** A WORLD CLASS TUNGSTEN COMPANY

### North American Tungsten

Wade Stogran  
 North American Tungsten  
 Vice President Environmental and Corporate Affairs  
[wstogran@natungsten.com](mailto:wstogran@natungsten.com)  
 604-684-5300  
[www.natungsten.com](http://www.natungsten.com)

TSX VENTURE EXCHANGE: NTC



**Glenn Rudman**

---

**From:** Wade Stogran [wstogran@natungsten.com]  
**Sent:** Monday, October 27, 2008 9:03 AM  
**To:** 'Liard McMillan'  
**Cc:** 'Alex Morrison'  
**Subject:** WL Conference

Chief Liard: It was a pleasure seeing you and Alex again, at the conference in Watson Lake. I was quite impressed with the quality the conference and the attendance, especially considering the short time line for the organization. I was especially interested in the many comments from the Elders in the community and found them to be very insightful. The round table on social issues was also very interesting and well run.

Prior to the conference, and at the beginning of the conference, you suggested that I would have a chance to meet with yourself and Council to perhaps give a more in depth presentation on the Mactung project and be available to answer any questions or concerns. I assumed that the meeting would be held during the week of the conference, however, given the very busy schedule of everybody there, I was not surprised that we could not get together. Would it be possible to have the meeting described above within the near future?

Thank you for your help and understanding.

*Wade*

**From:** Alex Morrison [mailto:am\_lfndc@yahoo.ca]  
**Sent:** Thursday, November 06, 2008 3:32 PM  
**To:** Liard McMillan  
**Cc:** Wade Stogran; Sheila Chief and Council  
**Subject:** MEETING WITH NAT

Liard,

I had a telephone conversation with Wade from NAT. NAT requests a meeting with LFN council on or about the 20th of November to discuss Mactung and Cantung. Can we set up that meeting? Wade can be in the Yukon during the latter part of that week. Please advise.

Alex Morrison  
General Manager  
Liard First Nation Development Corporation

Watson Lake: (867) 536-7611  
WL Fax: (867) 536-2332  
Whitehorse: (867) 668-6850  
Cell: (867) 332-7848

---

Now with a new friend-happy design! Try the new **Yahoo! Canada Messenger**

11/17/2008

**Glenn Rudman**

---

**From:** Wade Stogran [wstogran@natungsten.com]

**Sent:** Tuesday, November 11, 2008 7:24 AM

**To:** Alex Morrison

**Subject:** Chief and Council meeting

Alex: I am making reservations for the Chief and Council meeting that we talked about for November 20. I will be arriving in Whitehorse from Yellowknife at about 1430 hrs on November 19. I am assuming that the meeting would be in Watson Lake, so I will rent a car to drive there that afternoon and stay at the Belvedere. There are no planes out in the evening anymore, so I will leave Whitehorse at about 1430 on November 21.

Cheers

*Wade*

**Minutes of Meeting between Liard First Nation (LFN)  
and North American Tungsten Corporation Limited(NATCL)**

Whitehorse LFNDC Office, Industrial Blvd.  
Watson Lake LFN Executive Offices via teleconference

Friday November 21, 2008  
11:30 AM

**Present:**

**In Person:** Chief Liard McMillan, LFN  
Wade Stogran, Vice President of Environmental and Corporate Affairs, NATCL  
Alex Morrison, LFN Development Corporation.  
Luigi Zanasi, socio-economic consultant (contracted to NATCL)

**Via teleconference:**

Sheila Caesar  
Jim Wolftail  
Tom Cove  
Sam Donnelly

Chief McMillan opened the meeting by stating that the purpose of the meeting was to discuss, among other things, the funding application for negotiating a Socio-Economic Participation Agreement (SEPA) and turned the meeting over to Wade Stogran.

Wade Stogran stated that this meeting was mainly about the Mactung project as everyone was familiar with the situation at Cantung. Wade presented an update to participants on what has been completed to date regarding the Mactung project and the YESAB project proposal. Among the highlights is that over \$25 million has been spent to date on the project since discovery in 1962. The plan is to complete the permitting to allow construction to start in 2010. However, the start date may be dependent on the state of the economy and availability of financing. NATCL prepared a handout describing the proposed Mactung project and additional copies were provided to be distributed to others.

***Action: Alex Morrison to distribute Mactung handout to meeting participants in Watson Lake.***

In response to a question by Chief McMillan, Wade Stogran stated that there are approximately 18 to 24 months of mineable reserves at Cantung, but that additional ore intersections have been found.

There were some questions about the status of reclamation at Cantung from Chief MacMillan and Alex Morrison. Wade Stogran stated that progressive reclamation is currently ongoing and that the reclamation cost is fully bonded. Alex Morrison pointed out that there was a whole ream of things that could be done with the mine equipment and that LFN wanted to do some planning around turning the mine into a tourist attraction after the closure. Wade agreed and informed the meeting participants that Parks Canada and the government of the NWT are planning to send people to look at the mine to gauge what infrastructure could be retained for the venture. The road and mine would be the main gateway into the expanded Nahanni Park. Part of NATCL's reclamation plan is to decommission all site roads. All of the Nahanni Range Road is public road and it is not known what the plans are of the government regarding the road after mine closure.

Wade informed the meeting that NATCL's YESAB project proposal for Mactung would be submitted in mid December and that LFN would be provided a copy as soon as it is ready.

**Action: NATCL to provide copy of YESAB project proposal submission to LFN as soon as it is ready.**

On a question about the Chinese financing deal, Wade Stogran informed the meeting that that deal was ended at the initiative of NATCL, which allows NATCL to look for other sources of financing.

Chief McMillan asked if NATCL is still shipping ore from Cantung. The answer was yes, NATCL is shipping ore as usual and is now financially better with the lower Canadian dollar and reduced fuel costs.

Chief McMillan asked about the Cantung water license. Wade Stogran responded that NATCL had applied for a renewal of the existing water license in the NWT and had done consultation with the affected NWT communities (Nahanni Butte & Fort Liard). A draft permit has been issued by the NWT water board but contains some provisions that require further discussion.

### ***SEPA discussion***

Wade Stogran mentioned the exchange of emails with Ron Gartshore on the funding application for SEPA negotiations. Alex Morrison reiterated that they want to follow the same process as with Selwyn. Alex also expressed the interest of LFN to take advantage of business opportunities related to Mactung starting in 2010. Wade reiterated the company's view that it is simply good business for NATCL to hire locally and do business with local businesses. As an example of potential LFN participation Alex explained that LFNDC is examining the tax advantages of locating power supplies in the Lower Post Reserve.

Chief McMillan reiterated that there must be a joint application for funding for the SEPA, but the SEPA was not absolutely essential. LFN has worked with NATCL for a number of years and the relationship has been good depending on which individuals were involved. The SEPA must also look at consultation obligations. LFN finds it hard to respond, as it needs the capacity to do so (e.g. technical review or traditional knowledge).

LFN agreed to write a support letter for RRDC on their SEPA application for Selwyn however LFN reiterated that LFN had committed to sharing some of the SEPA resources that it will from INAC for Selwyn once LFN receives it but LFN has interpreted the intention of RRDC to write a letter applying for separate funding as a signal that they would rather receive their own funds and that they do not require LFN to share its SEPA funds directly with RRDC.

LFN wants SEPA negotiating funds for NATCL specific to LFN identified to ensure that LFN can participate in a meaningful fashion, while RRDC can maintain the lead on the file.

The SEPA is to be a government to industry agreement between the First Nation and the company, but the LFN Development Corporation will benefit.

Chief McMillan asked for minutes to be produced of the current meeting and that copies be provided to the Ross River Dena Council.

**Action: NATCL is to forward copies of the minutes to RRDC once they are completed and agreed upon.**

Chief McMillan stated that he would write a letter to support RRDC's request for separate SEPA negotiation funding for negotiations with Selwyn Resources.

On Mactung, Chief McMillan stated that LFN wants to be at the table but respects the fact that the mine is in Ross River's "backyard". LFN does not want to lose any of its rights, but wants to be working together with RRDC and NATCL. LFN has no qualms about RRDC playing the lead role and the bulk of the benefits should go to Ross River, but LFN should receive some benefits. LFN does not want closed-door meetings, and should RRDC choose to exclude LFN, LFN will protect its interests. Therefore, LFN is OK with Ross River playing the lead role and with a larger percentage of the funds going to Ross River, but LFN also needs SEPA negotiation funding.

Wade Stogran reiterated that NATCL tried to play as transparent a role as possible, as was done in drafting the MOU.

Chief McMillan asked the other council members if they agreed with his position and they all stated that yes, it was acceptable.

Tom Cove asked how long before the YESAA process is completed. Wade Stogran responded that NATCL expected to have completed the YESAA process by the end of 2009, and obtain the water and quartz license in the second quarter of 2010.

Chief McMillan asked if there was any information that could be sent out yet. Wade Stogran responded that the available information had already been sent, and the YESAB project proposal submission will be sent to LFN as soon as it is ready.

Chief McMillan asked if the YESAB submission is for the whole project including final reclamation. Wade Stogran responded that it was.

Tom Cove noted that there are two consultation processes: the first is the YESAB process and the second is consultation and accommodation with respect to aboriginal title and rights. LFN needs resources to participate in both and needs to find some funding to ensure that LFN has the ability to meet timelines. There is a need to review funding resources. Luigi Zanasi noted that additional funds might be available from YESAB. Tom said that LFN only gets core funding of \$100,000 from YESAB which is used to review a very large number of small projects and nobody should think that LFN's review of a major mine could possibly come from those limited funds.

Chief McMillan suggested that the decisions relating the duty to consult and accommodate from the Haida and the Taku River cases be reviewed as they have implications for the company. It is important that LFN has the capacity to participate in these consultations and to share the capacity with Ross River.

Chief McMillan stated that LFN is attempting to negotiate an intergovernmental agreement on Nahanni Park with Parks Canada and wants to participate economically in the park.

Chief McMillan noted that the ore concentrate would be transported through Watson Lake.

Chief McMillan noted that LFN needs to see demonstration that this is a real project and will consult in good faith as long as company does and respects that LFN are the occupants of the land.

Chief McMillan thanked the company for its past support for community events and asked for a small financial contribution to the elders' (15 December) and youth (16 December) Christmas parties. He noted that Yukon Zinc contributed \$2,000. Wade Stogran agreed to bring the request forward and did not foresee any problem. LFN staff Christmas party is to be held on December 12. It would be a good idea for the company to have a representative at the party to meeting with members and family.

***Action: Wade Stogran is to bring forward the request for funding of the elders' and youths' Christmas parties.***

Alex Morrison noted that he and Wade Stogran had been working on the development of an underground mining course at Cantung, which is 90% complete. Alex noted that Wade had been a strong advocate of hiring local miners.

Wade thanked the Chief and Council for taking the time to meet with NATCL and that he would take requests back to his NATCL colleagues.