

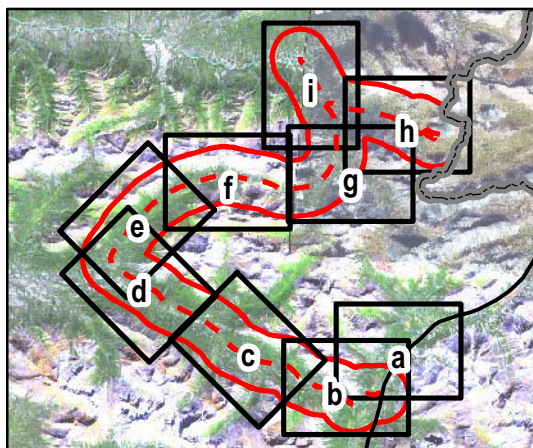
LEGEND

- North Canal Road
- Proposed Access Road
- Contours (20m)
- NWT-Yukon Territory Border
- Vegetation Road Local Study Area
- Aerodrome 200m Buffer
- Proposed Mine Site Infrastructure
- Ecological Land Classification

NOTES

Base data source: QuickBird, Landsat, NTS 1:50,000

ISSUED FOR USE



MACTUNG

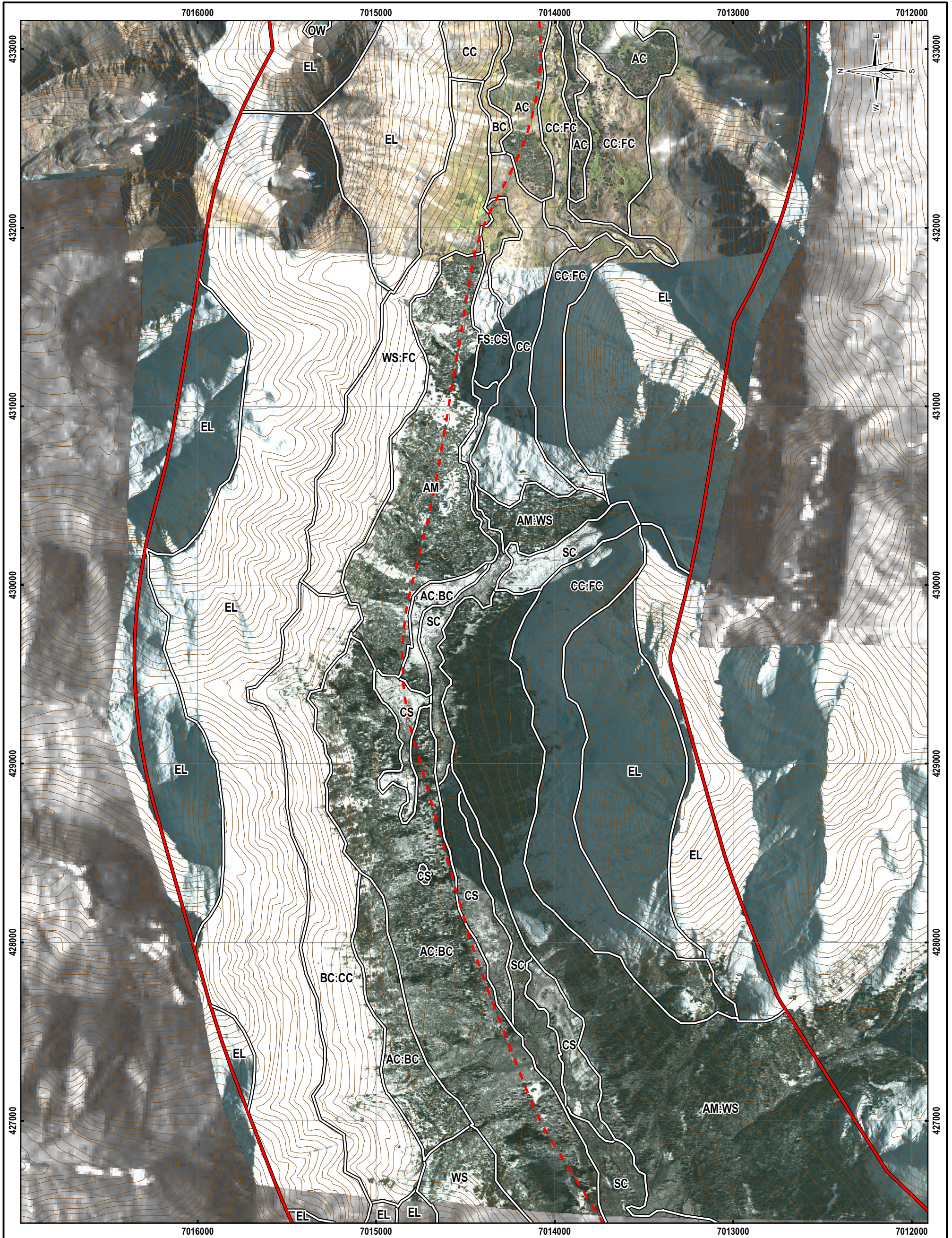
Ecosystem Units

PROJECTION UTM Zone 9	DATUM NAD83
Scale: 1:20,000	



FILE NO. W23101021_017_Veg_ELCSeries.mxd			
PROJECT NO. W23101021.017	DWN MEZ	CKD JS	REV 0
OFFICE EBA-VANC	DATE December 3, 2008		

Figure 5e



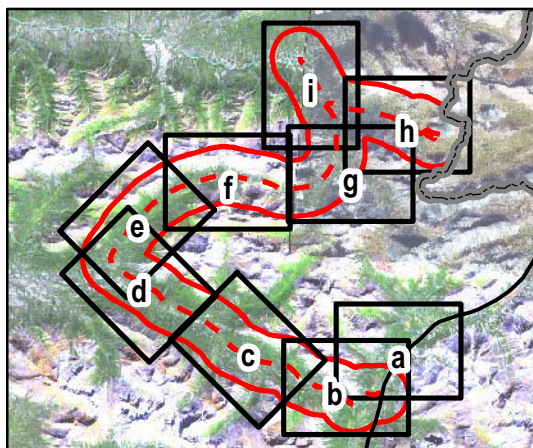
LEGEND

- North Canal Road
- Proposed Access Road
- Contours (20m)
- NWT-Yukon Territory Border
- Vegetation Road Local Study Area
- Aerodrome 200m Buffer
- Proposed Mine Site Infrastructure
- Ecological Land Classification

NOTES

Base data source: QuickBird, Landsat, NTS 1:50,000

ISSUED FOR USE



MACTUNG

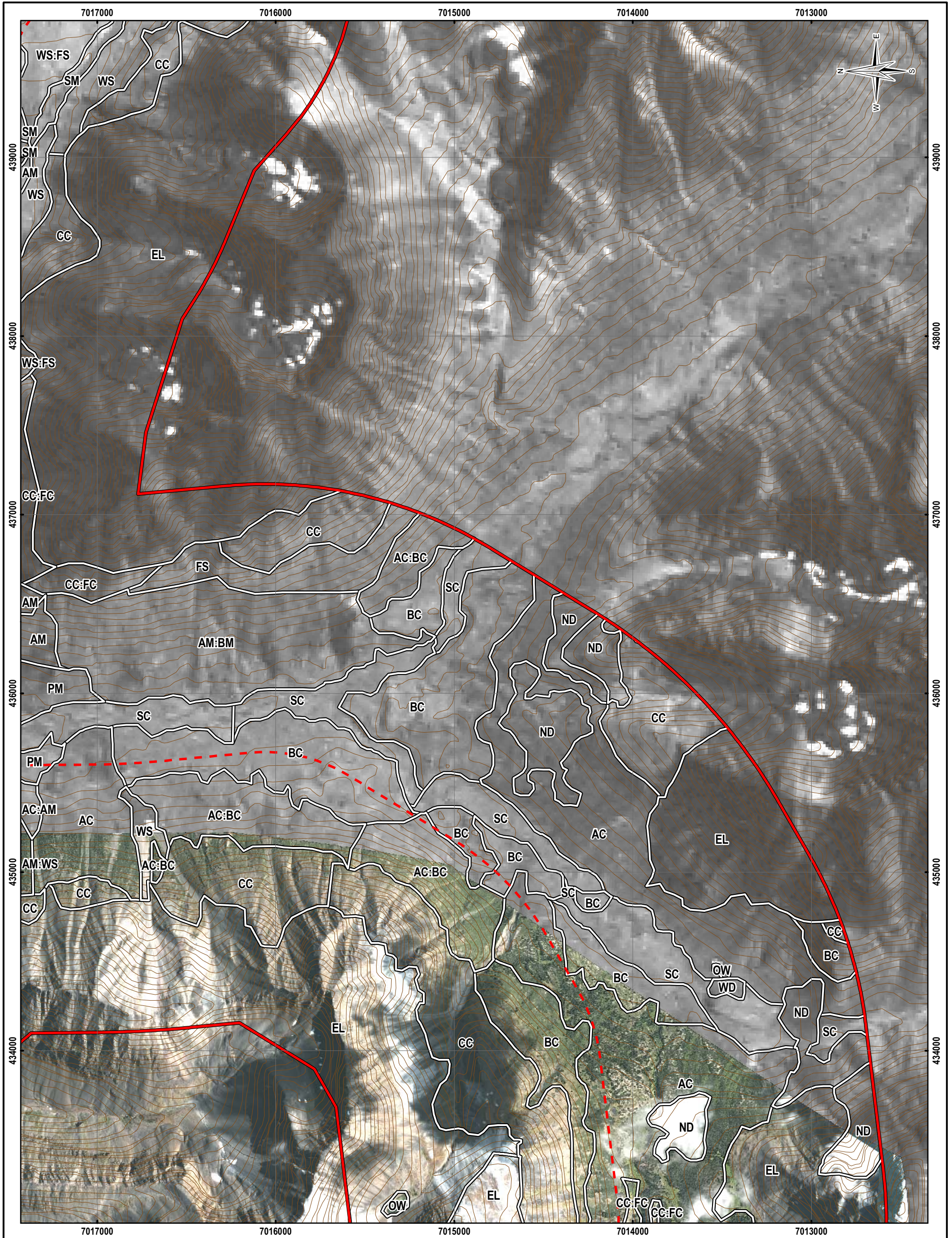
Ecosystem Units

PROJECTION UTM Zone 9	DATUM NAD83
Scale: 1:20,000	

EBA Engineering Consultants Ltd.

FILE NO. W23101021_017_Veg_ELCSeries.mxd			
PROJECT NO. W23101021.017	DWN MEZ	CKD JS	REV 0
OFFICE EBA-VANC	DATE December 3, 2008		

Figure 5f



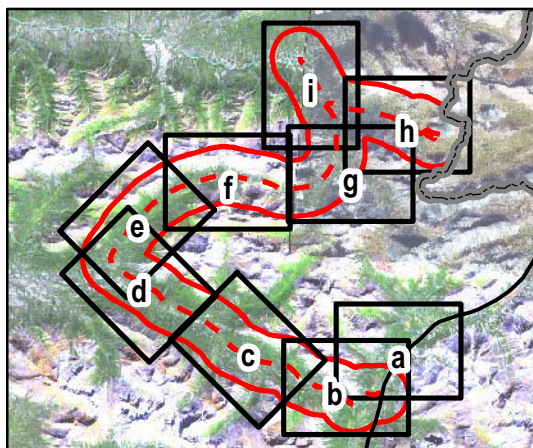
LEGEND

- North Canal Road
- Proposed Access Road
- Contours (20m)
- NWT-Yukon Territory Border
- Vegetation Road Local Study Area
- Aerodrome 200m Buffer
- Proposed Mine Site Infrastructure
- Ecological Land Classification

NOTES

Base data source: QuickBird, Landsat, NTS 1:50,000

ISSUED FOR USE



MACTUNG

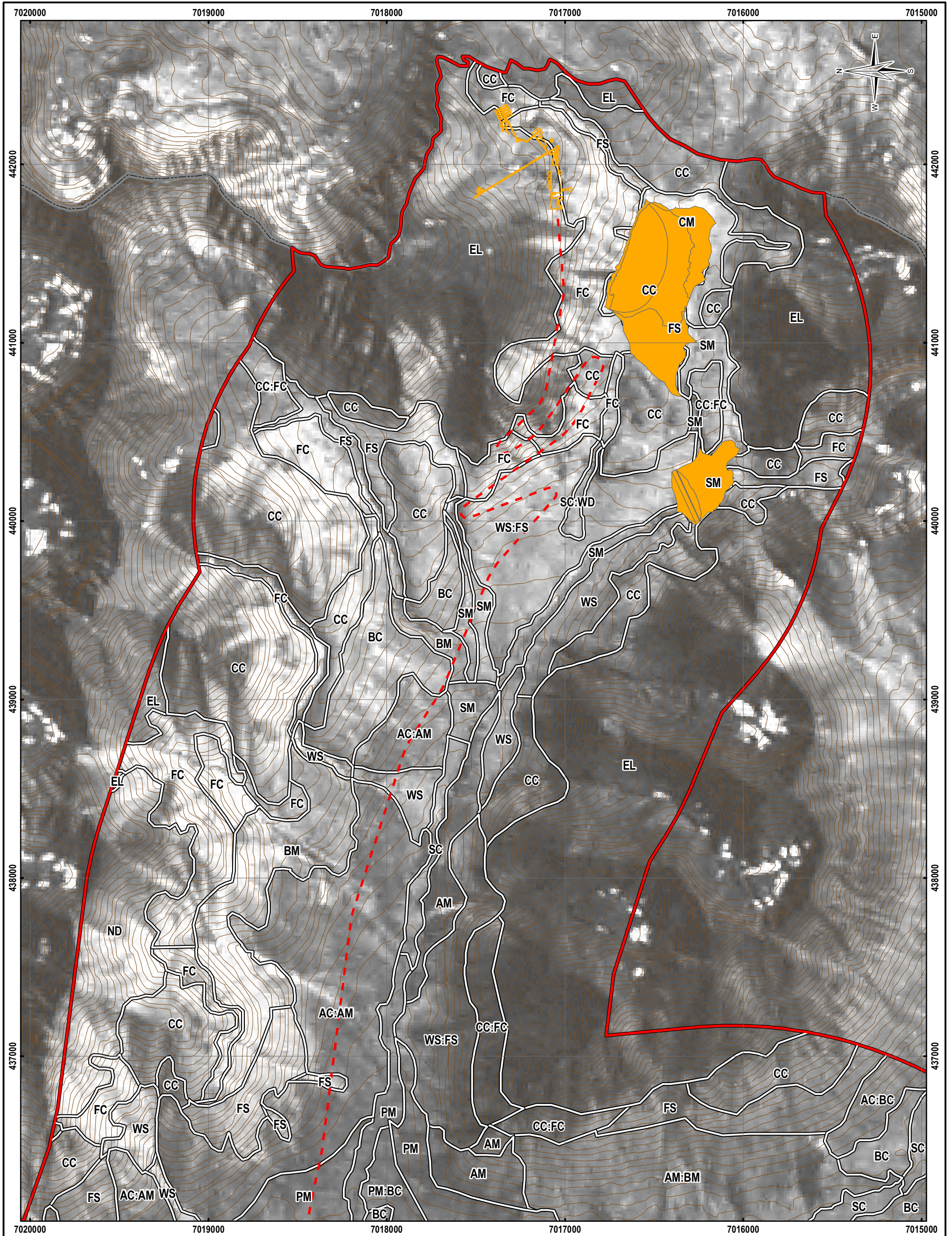
Ecosystem Units

PROJECTION UTM Zone 9	DATUM NAD83
Scale: 1:20,000	

EBA Engineering Consultants Ltd.

FILE NO. W23101021_017_Veg_ELCSeries.mxd			
PROJECT NO. W23101021.017	DWN MEZ	CKD JS	REV 0
OFFICE EBA-VANC	DATE December 3, 2008		

Figure 5g



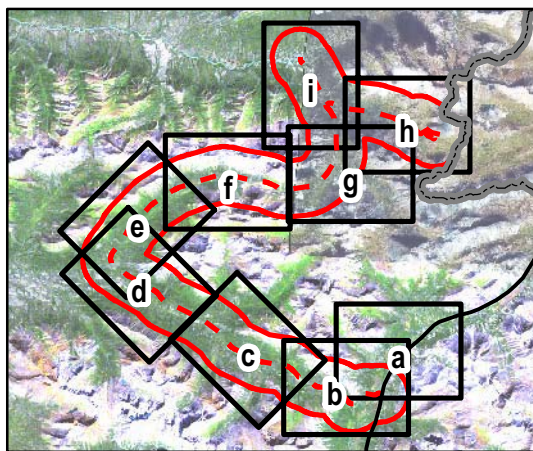
LEGEND

- North Canol Road
- Proposed Access Road
- Contours (20m)
- NWT-Yukon Territory Border
- Vegetation Road Local Study Area
- Aerodrome 200m Buffer
- Proposed Mine Site Infrastructure
- Ecological Land Classification

NOTES

Base data source: QuickBird, Landsat, NTS 1:50,000

ISSUED FOR USE



MACTUNG

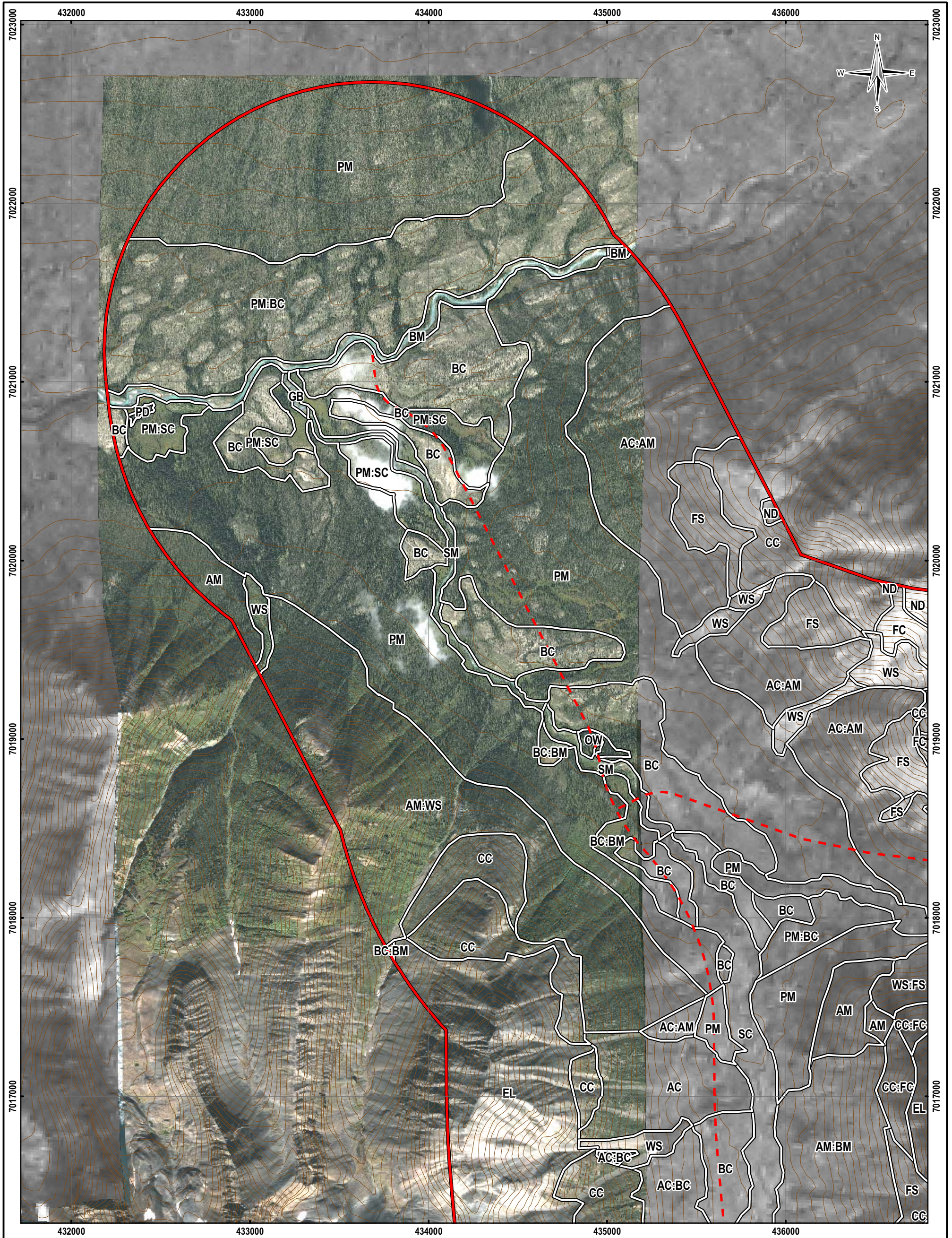
Ecosystem Units

PROJECTION UTM Zone 9	DATUM NAD83
Scale: 1:20,000	
Meters	



FILE NO. W23101021_017_Veg_ELCSeries.mxd			
PROJECT NO. W23101021.017	DWN MEZ	CKD JS	REV 0
OFFICE EBA-VANC	DATE December 3, 2008		

Figure 5h



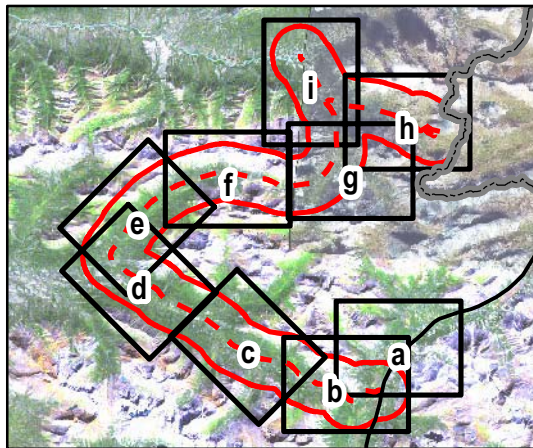
LEGEND

- North Canal Road
- Proposed Access Road
- Contours (20m)
- NWT-Yukon Territory Border
- Vegetation Road Local Study Area
- Aerodrome 200m Buffer
- Proposed Mine Site Infrastructure
- Ecological Land Classification

NOTES

Base data source: QuickBird, Landsat, NTS 1:50,000

ISSUED FOR USE



MACTUNG

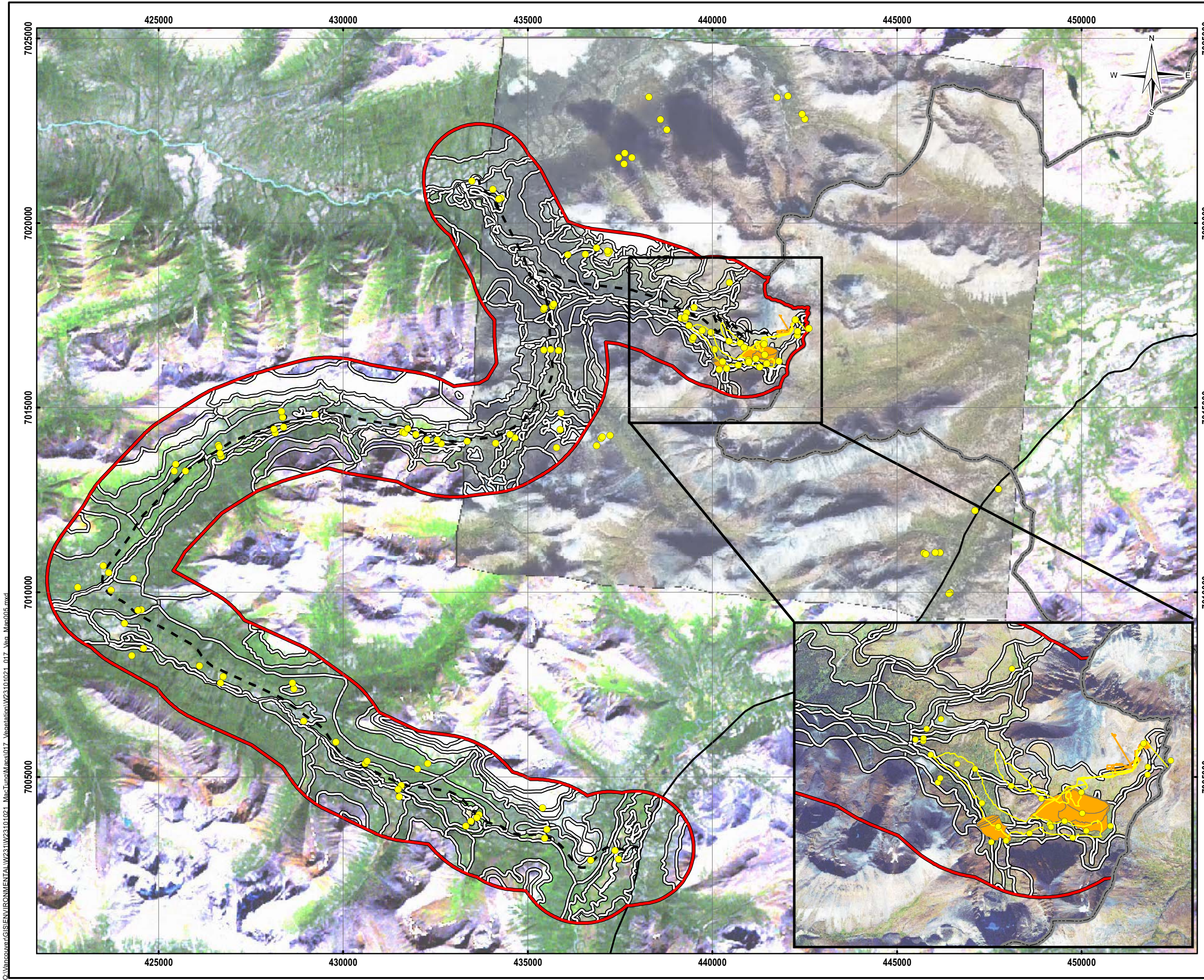
Ecosystem Units

PROJECTION UTM Zone 9	DATUM NAD83
Scale: 1:20,000	
Meters	



FILE NO. W23101021_017_Veg_ELCSeries.mxd			
PROJECT NO. W23101021.017	DWN MEZ	CKD JS	REV 0
OFFICE EBA-VANC	DATE December 3, 2008		

Figure 5i



- LEGEND**
- Vegetation Plots
 - Rare Plant Survey Tracks (2007)
 - North Canal Road
 - Proposed Access Road
 - NWT-Yukon Territory Border
 - Proposed Mine Site Infrastructure
 - Ecological Land Classification
 - Vegetation Local Study Area

ISSUED FOR USE

NOTES
Base data source: Site Plan adapted from original provided by Wardrop

MACTUNG

Rare Plant Survey

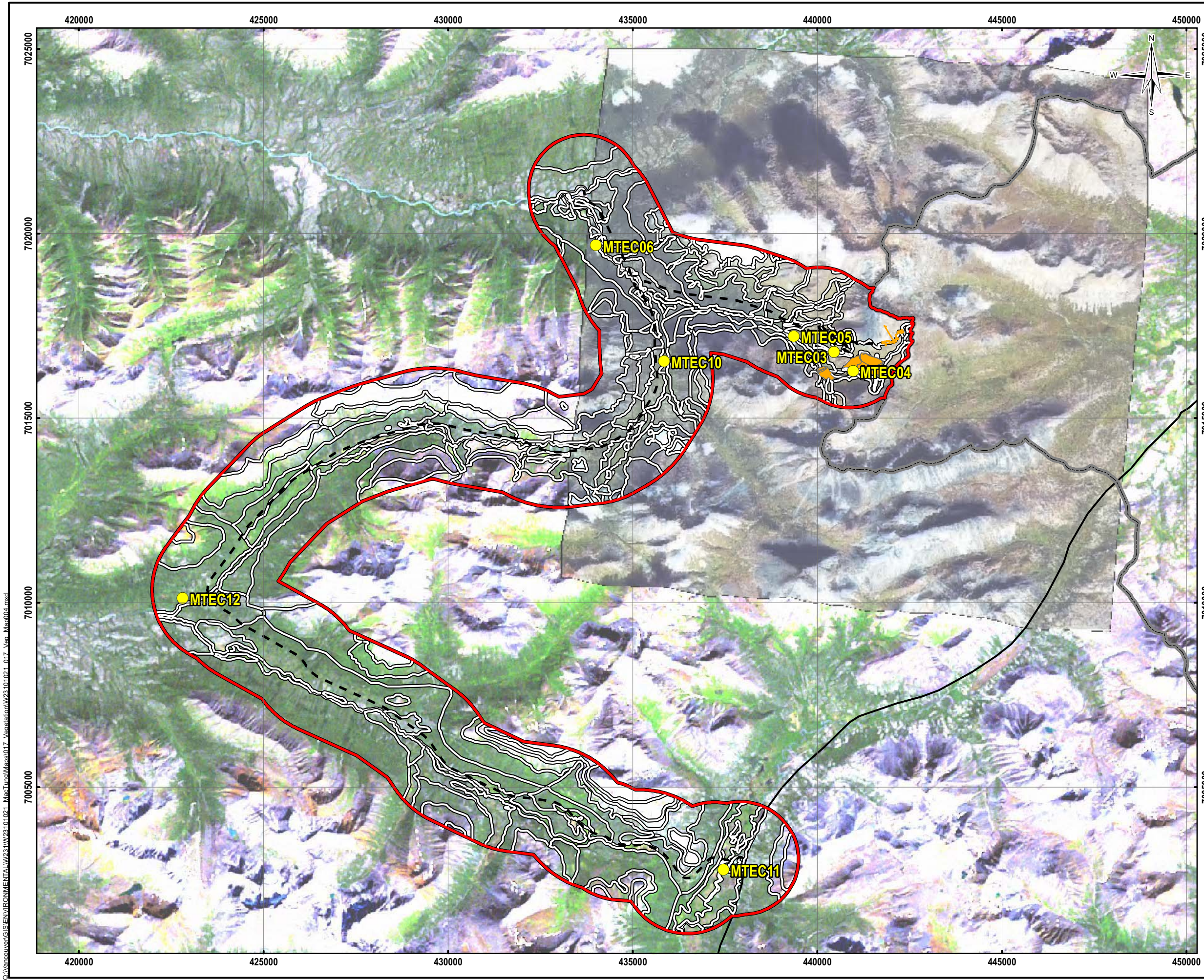
PROJECTION UTM Zone 9	DATUM NAD83
Scale: 1:100,000	

EBA Engineering Consultants Ltd.

FILE NO. W23101021_017_Veg_Map005.mxd			
PROJECT NO. W23101021.017	DWN MEZ	CKD JS	REV 0
OFFICE EBA-VANC	DATE December 3, 2008		

Figure 6

C:\Vancouver\GIS\ENVIRONMENTAL\W23101021_Mactung\Map005.mxd



LEGEND

- Trace Element Concentration Samples
- North Canal Road
- - - Proposed Access Road
- ▬ NWT-Yukon Border
- Proposed Mine Site Infrastructure
- Ecological Land Classification
- ▭ Vegetation Local Study Area

ISSUED FOR USE

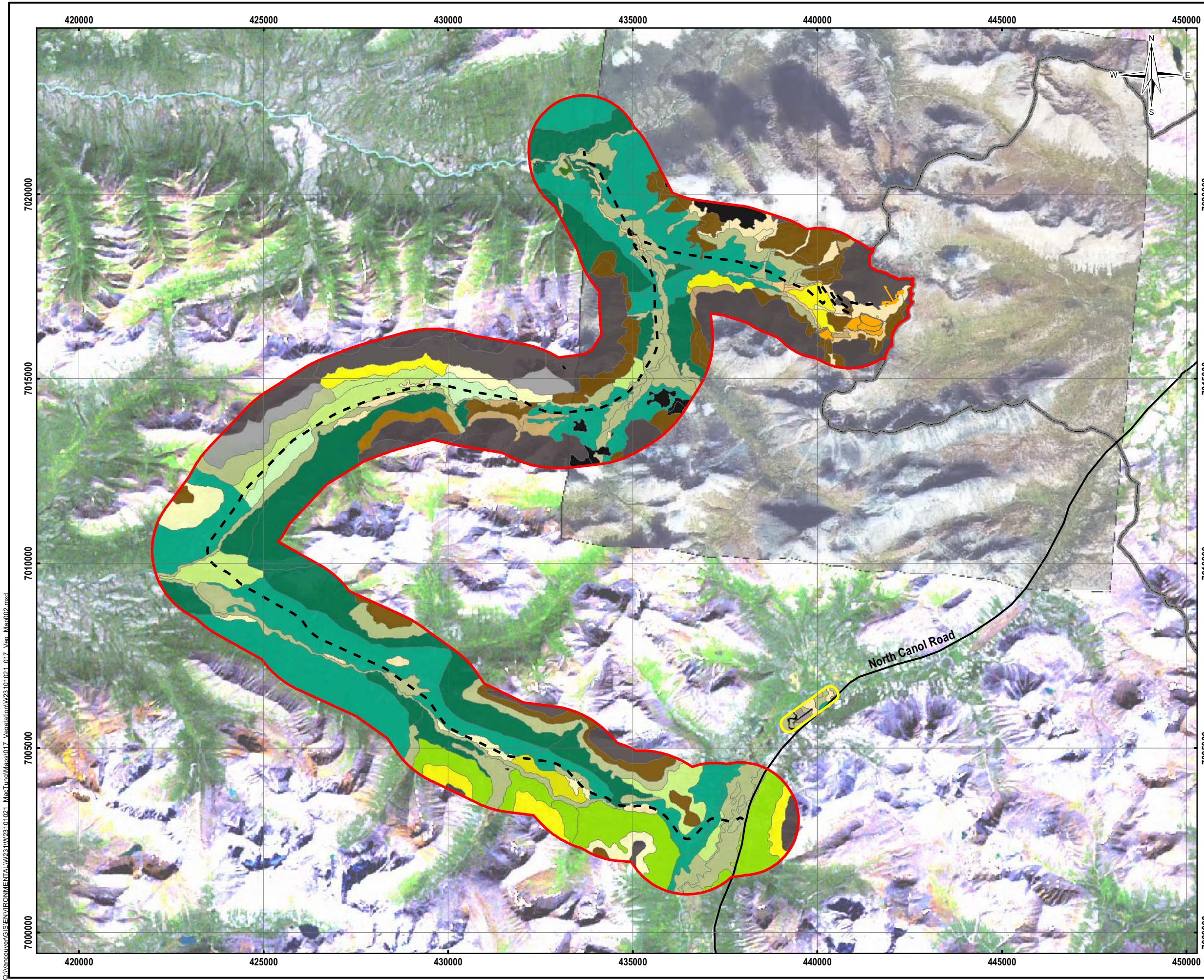
NOTES
Base data source: Site Plan adapted from original provided by Wardrop

MACTUNG

Trace Element Concentrations

PROJECTION UTM Zone 9	DATUM NAD83		
Scale: 1:100,000			
FILE NO. W23101021_017_Veg_Map004.mxd			
PROJECT NO. W23101021.017	DWN MEZ	CKD JS	REV 0
OFFICE EBA-VANC	DATE December 3, 2008		
EBA Engineering Consultants Ltd.			Figure 7

Q:\Vancouver\GIS\ENVIRONMENTAL\W23101021_Mactung\Maps\017_Veg_Map004.mxd



LEGEND

- North Canol Road
- - - Proposed Access Road
- NWT-Yukon Territory Border
- Proposed Mine Site Infrastructure
- Vegetation Local Study Area
- Aerodrome 200m Buffer

Structural Stage

- No Value
- 1
- 1a
- 1b
- 2a
- 2b
- 2b:2d
- 2d
- 2d:2b
- 3a
- 3a:2b
- 3a:2d
- 3b
- 3b:3a
- 5
- 5:3a
- 6
- 6:2b
- 6:3a

ISSUED FOR USE

NOTES
Base data source: Site Plan Drawing adapted from original provided by Wardrop

MACTUNG

Structural Stages

PROJECTION UTM Zone 9	DATUM NAD83	
Scale: 1:100,000		
FILE NO. W23101021_017_Veg_Map002.mxd		
PROJECT NO. W23101110.001		
OFFICE EBA-VANC		
DWN MEZ	CKD JS	REV 0
DATE December 3, 2008		Figure 8

Q:\Vancouver\GIS\ENVIRONMENTAL\W23101110_017_Veg_Map002.mxd