

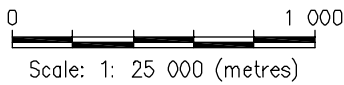
FIGURES | December 2008 - 42207.mxd | BY: BOB RICHMOND

C:\p\montreal\DIVISIONS\2007\Office\W23101110\08\08\ACAD\Drawings\W23101110\08\08\Yossa\Figures\SD-Drawings.dwg



NOTE: Background imagery provided courtesy of Google Earth and is shown for visual presentation only.

ISSUED FOR USE



MACTUNG
Decommissioning and Closure Plan

Ross River Staging Areas

PROJECT NO: W23101110.003	DWN BR	CHK SCD	REV 0
CLIENT: EBA-WHSE	DATE: DECEMBER 2008		

Figure 5

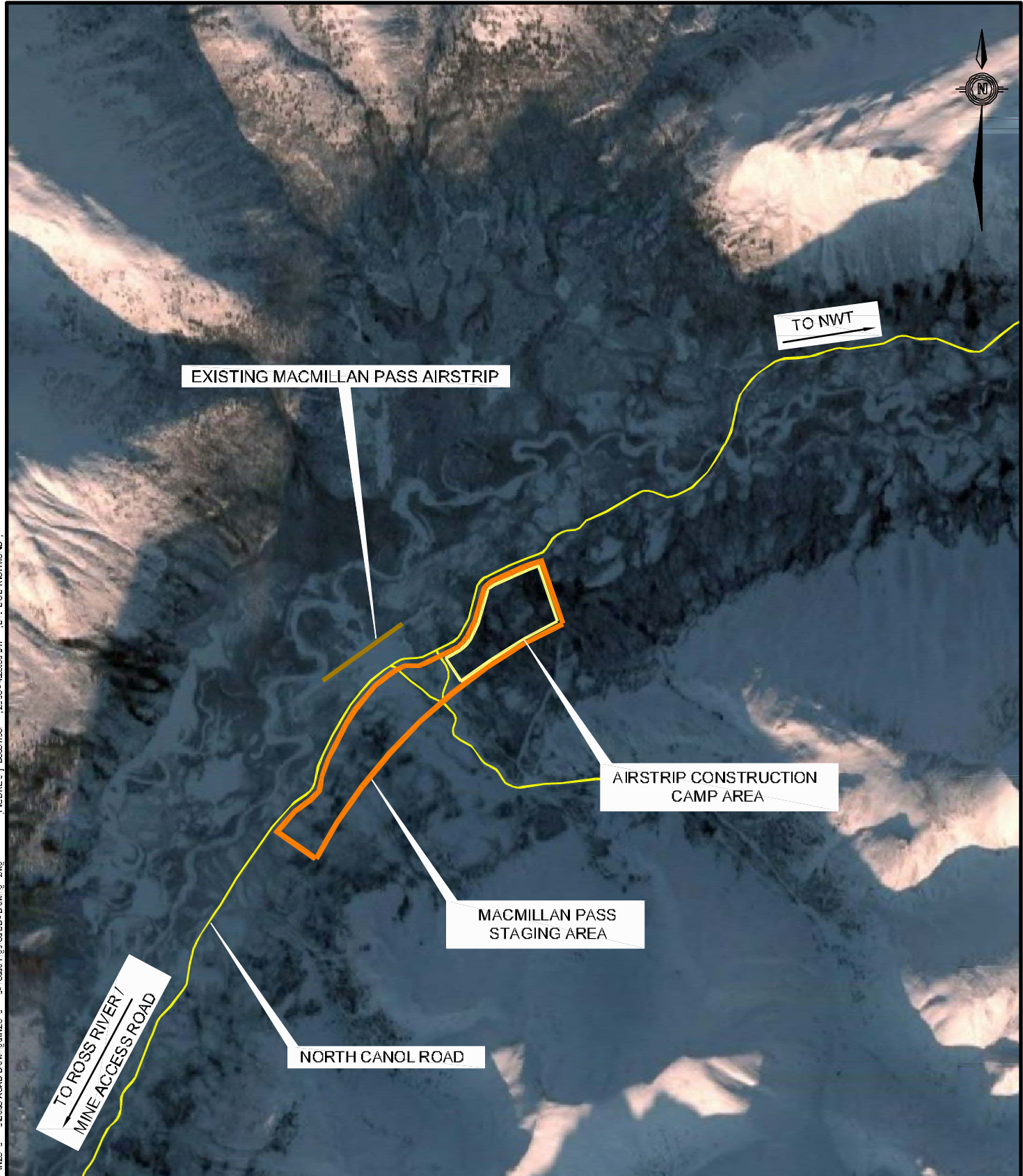


FIGURE 6 | December 2008 - 423:39 am | BY: BOB RICHMOND
C:\p\m\01\01\DIVISIONS\2007\01\01\018\ss\ACAD Drawings\1\23\01\01\018\ss\Figures\SD-Drawing.dwg

Google
NOTE: Background imagery provided courtesy of Google Earth and is shown for visual presentation only.

ISSUED FOR USE

0 1 000
Scale: 1: 25 000 (metres)

Client



EBA Engineering Consultants Ltd.



MACTUNG
Decommissioning and Closure Plan

MacMillan Pass Staging and Camp Area

PROJECT NO: W23101110.003	DWN BR	CD SCD	REV 0	Figure 6
CLIENT: EBA-WHSE	DATE: DECEMBER 2008			