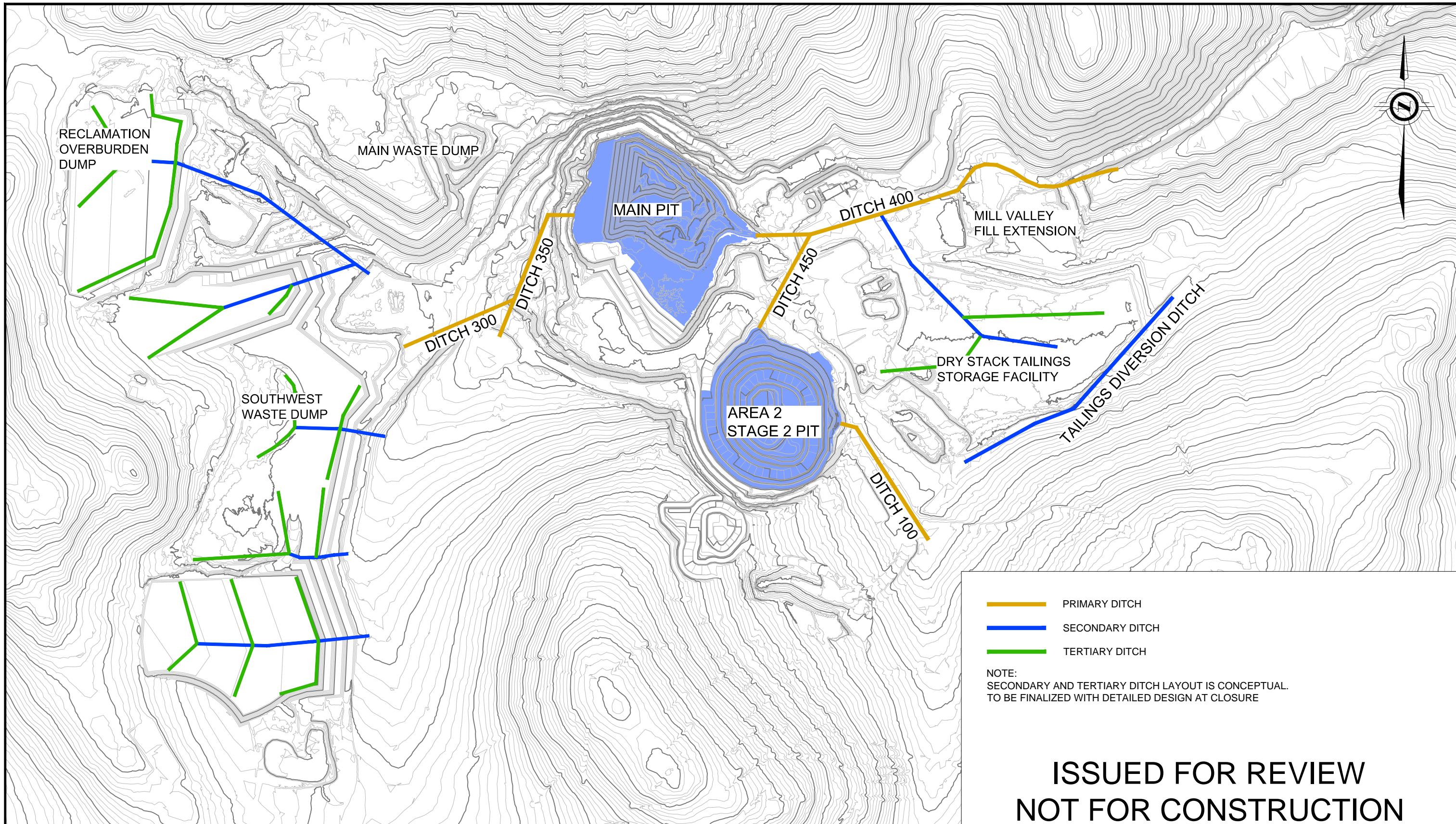


APPENDIX F
DESIGN DRAWINGS



- PRIMARY DITCH
- SECONDARY DITCH
- TERTIARY DITCH

NOTE:
SECONDARY AND TERTIARY DITCH LAYOUT IS CONCEPTUAL.
TO BE FINALIZED WITH DETAILED DESIGN AT CLOSURE

**ISSUED FOR REVIEW
NOT FOR CONSTRUCTION**

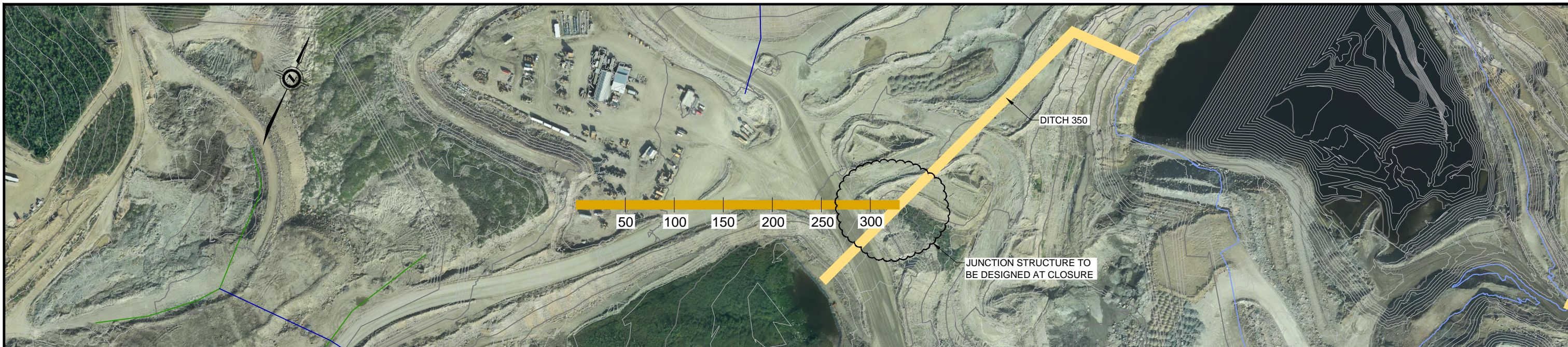
This drawing has been prepared for the use of Access Mining Consultants Ltd.'s client and may not be used, reproduced or relied upon by third parties, except as agreed by Access Mining Consultants Ltd. and its client, as required by law for use of governmental reviewing agencies. Access Mining Consultants Ltd. accepts no responsibility and denies any liability whatsoever, to any party that modifies this drawing without Access Mining Consultants Ltd.'s express written consent.

2013-09-13	ISSUED FOR REVIEW	00	KB	JT
DATE	ISSUE/REVISION	REV. No.	DRW.	APP.

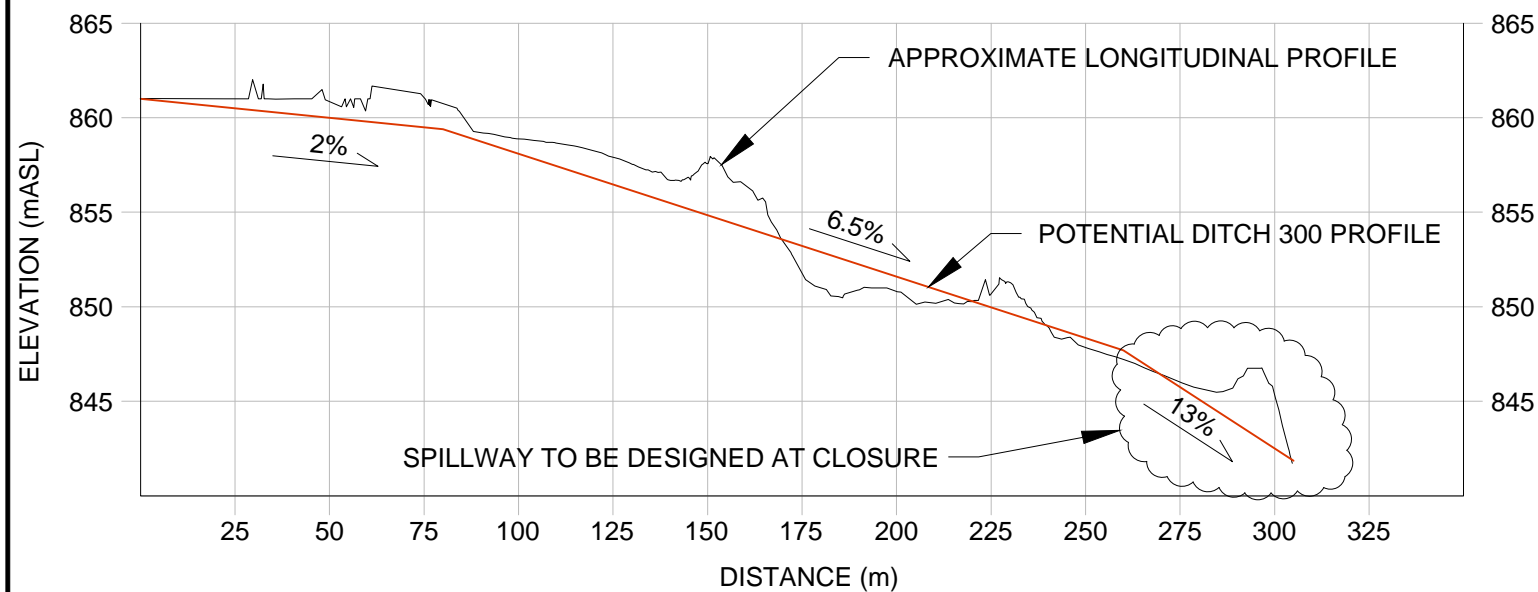


PROJECT NAME: Minto Mine Phase IV Reclamation and Closure Plan Revision 4.0	DESIGNED BY: D. Morissette	ACCESS PROJECT NO: MIN-11-01	CLIENT REF.:
DRAWING NAME: SITE PLAN	DRAWN BY: K. Boldt	DRAWING SCALE: 1:10000	
	CHECKED BY: J. Theriault	DRAWING NO: 01	REV.: 00

C:\Users\lboldt\Projects\Minto\CAD Drawings\MINTO-11-01-D01.dwg



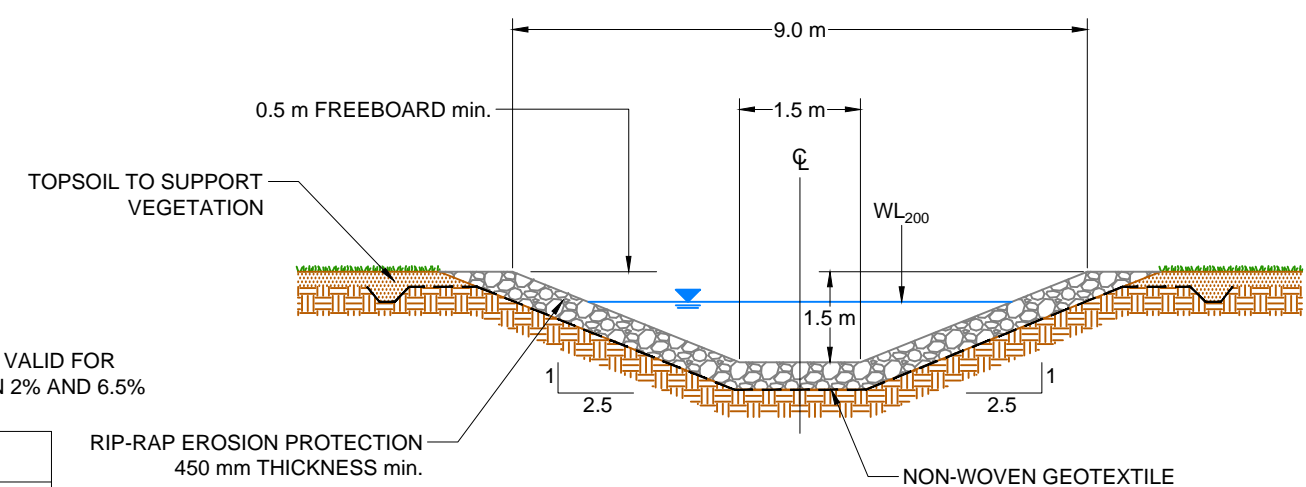
DITCH 300 PLAN VIEW
1:4000 SCALE



DITCH 300 PROFILE VIEW

5X VERTICAL EXAGGERATION
1:2000 SCALE

**ISSUED FOR REVIEW
NOT FOR CONSTRUCTION**



DITCH 300 TYPICAL SECTION
NOT TO SCALE

NOTE:
TYPICAL SECTION VALID FOR
SLOPES BETWEEN 2% AND 6.5%

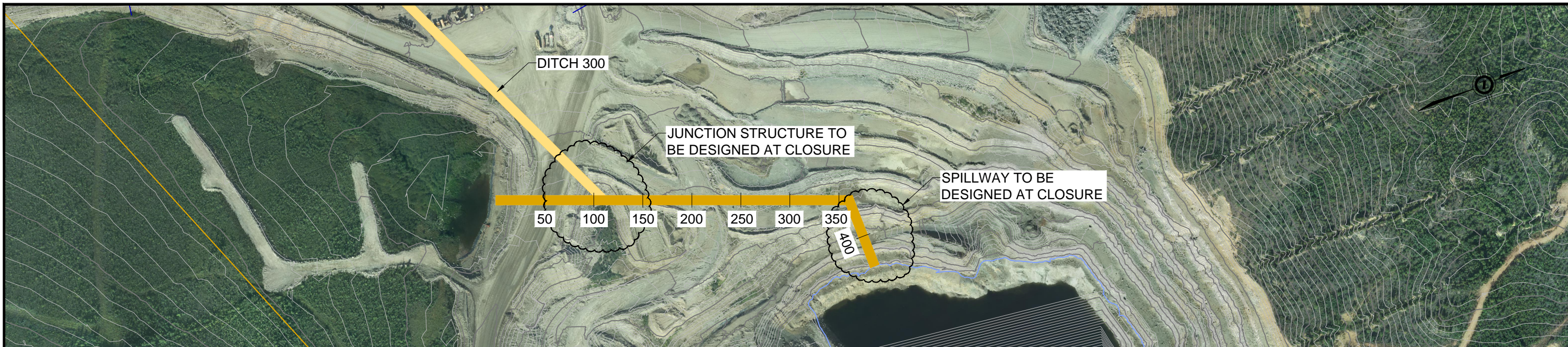
RIP-RAP	
MIN SIZE	200 mm
D ₅₀	300 mm
MAX SIZE	500 mm

This drawing has been prepared for the use of Access Mining Consultants Ltd.'s client and may not be used, reproduced or relied upon by third parties, except as agreed by Access Mining Consultants Ltd. and its client, as required by law for use of governmental reviewing agencies. Access Mining Consultants Ltd. accepts no responsibility and denies any liability whatsoever, to any party that modifies this drawing without Access Mining Consultants Ltd.'s express written consent.

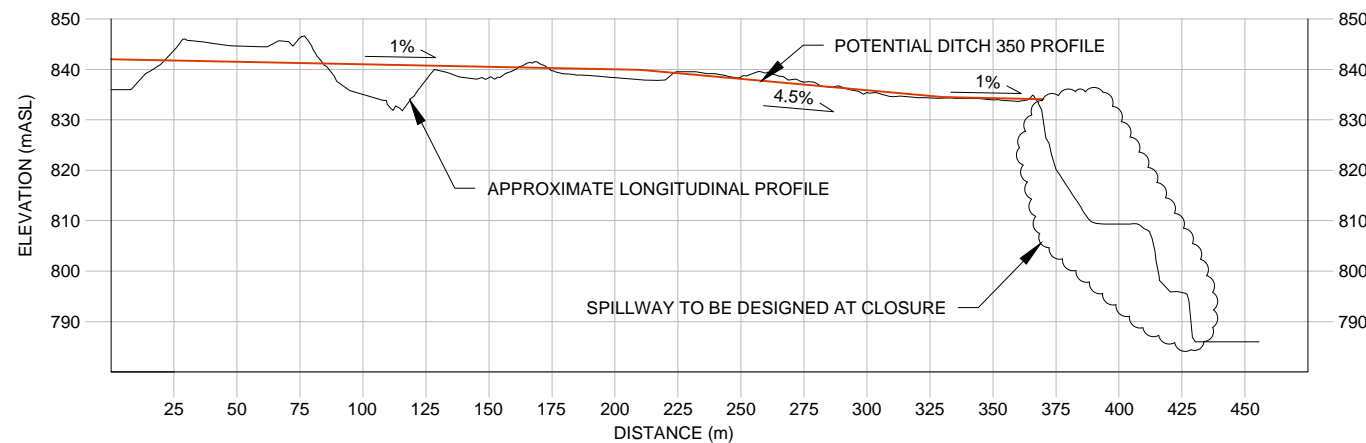
DATE	ISSUE/REVISION	REV. No.	DRW.	APP.
2013-09-13	ISSUED FOR REVIEW	00	KB	JT



PROJECT NAME: Minto Mine Phase IV Reclamation and Closure Plan Revision 4.0	DESIGNED BY: D. Morissette	ACCESS PROJECT NO: MIN-11-01	CLIENT REF.:
DRAWING NAME: DITCH 300 PLAN AND PROFILE	DRAWN BY: K. Boldt	DRAWING SCALE:	
	CHECKED BY: J. Theriault	DRAWING NO: 02	REV.: 00



DITCH 350 PLAN VIEW
1:4000 SCALE



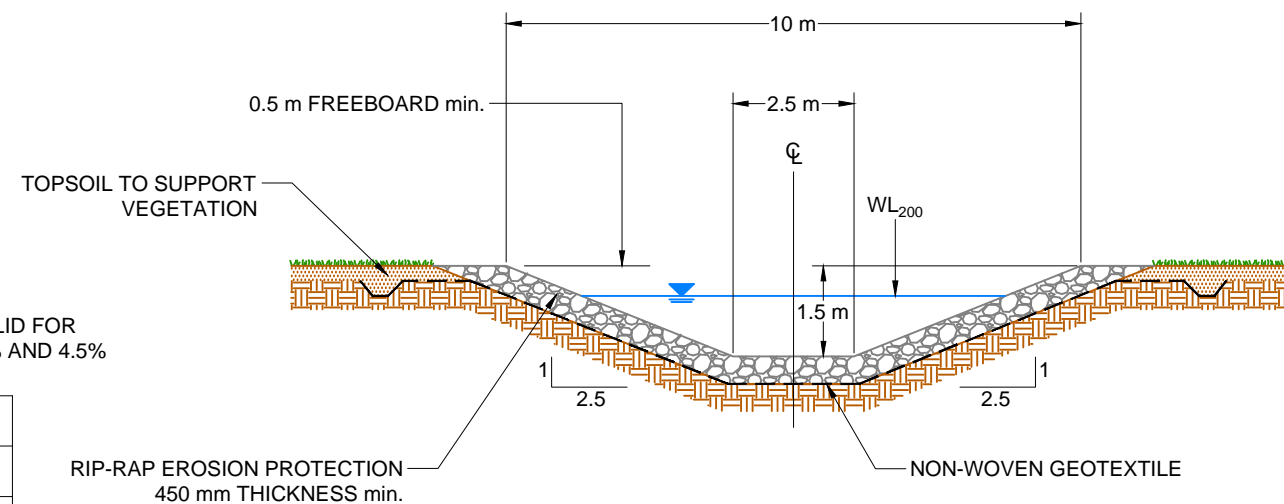
DITCH 350 PROFILE VIEW

2X VERTICAL EXAGGERATION
1:3000 SCALE

NOTE:
TYPICAL SECTION VALID FOR
SLOPES BETWEEN 1% AND 4.5%

RIP-RAP	
MIN SIZE	200 mm
D ₅₀	300 mm
MAX SIZE	500 mm

**ISSUED FOR REVIEW
NOT FOR CONSTRUCTION**



DITCH 350 TYPICAL SECTION
NOT TO SCALE

This drawing has been prepared for the use of Access Mining Consultants Ltd.'s client and may not be used, reproduced or relied upon by third parties, except as agreed by Access Mining Consultants Ltd. and its client, as required by law for use of governmental reviewing agencies. Access Mining Consultants Ltd. accepts no responsibility and denies any liability whatsoever, to any party that modifies this drawing without Access Mining Consultants Ltd.'s express written consent.

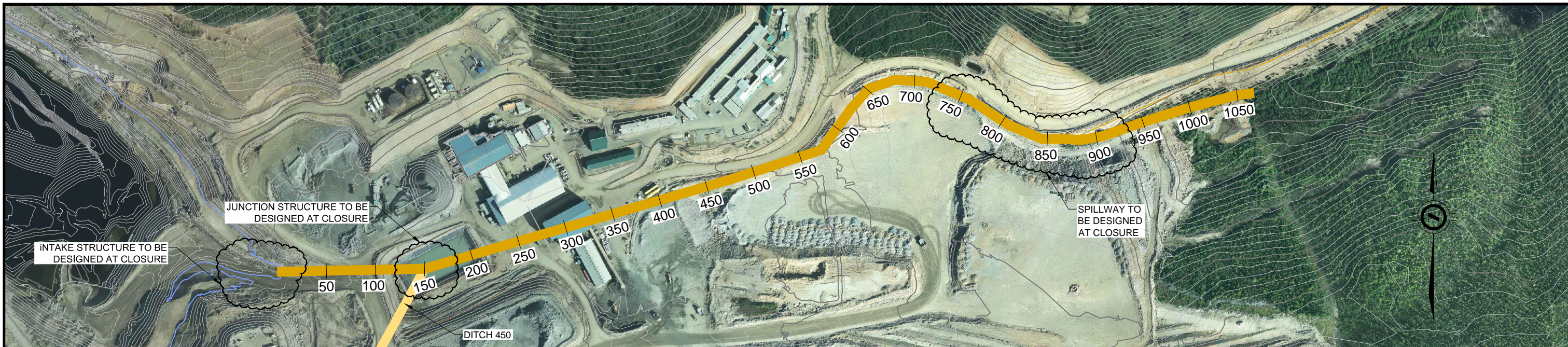
DATE	ISSUE/REVISION	REV. No.	DRW.	APP.
2013-09-13	ISSUED FOR REVIEW	00	KB	JT



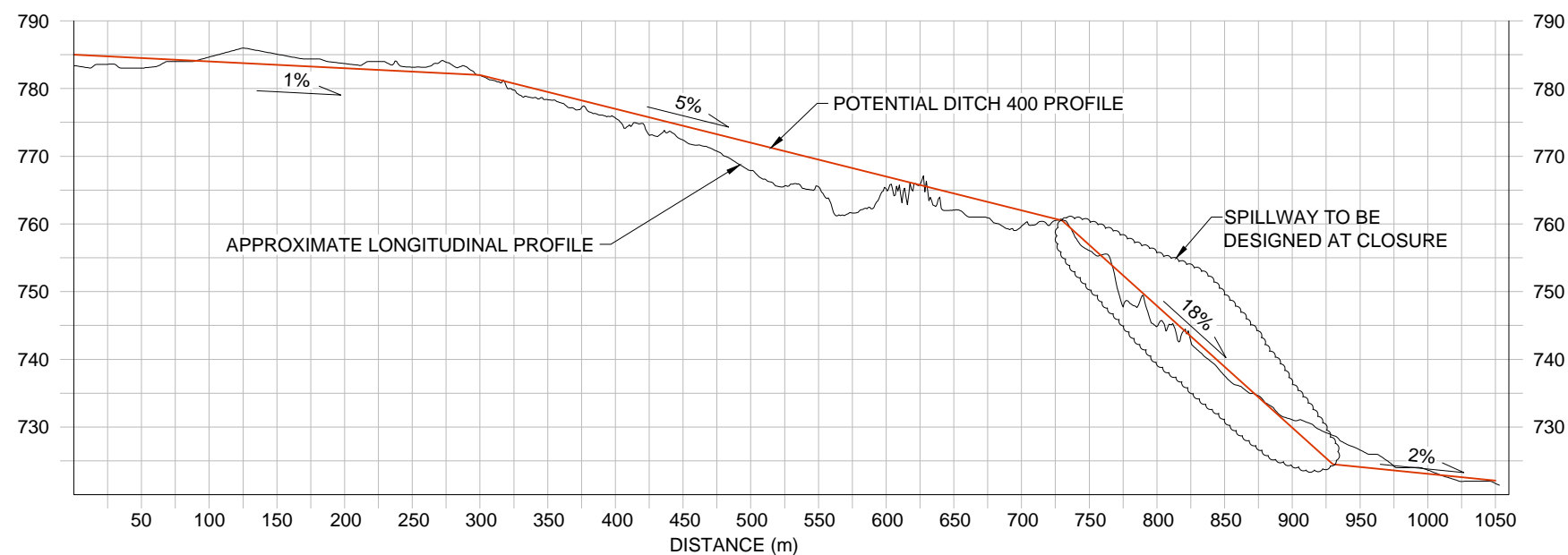
PROJECT NAME:
**Minto Mine Phase IV
Reclamation and Closure Plan**
Revision 4.0

DRAWING NAME:
**DITCH 350
PLAN AND PROFILE**

DESIGNED BY: D. Morissette	ACCESS PROJECT NO: MIN-11-01	CLIENT REF.:
DRAWN BY: K. Boldt	DRAWING SCALE:	
CHECKED BY: J. Theriault	DRAWING NO: 03	REV.: 00



DITCH 400 PLAN VIEW
1:4000 SCALE

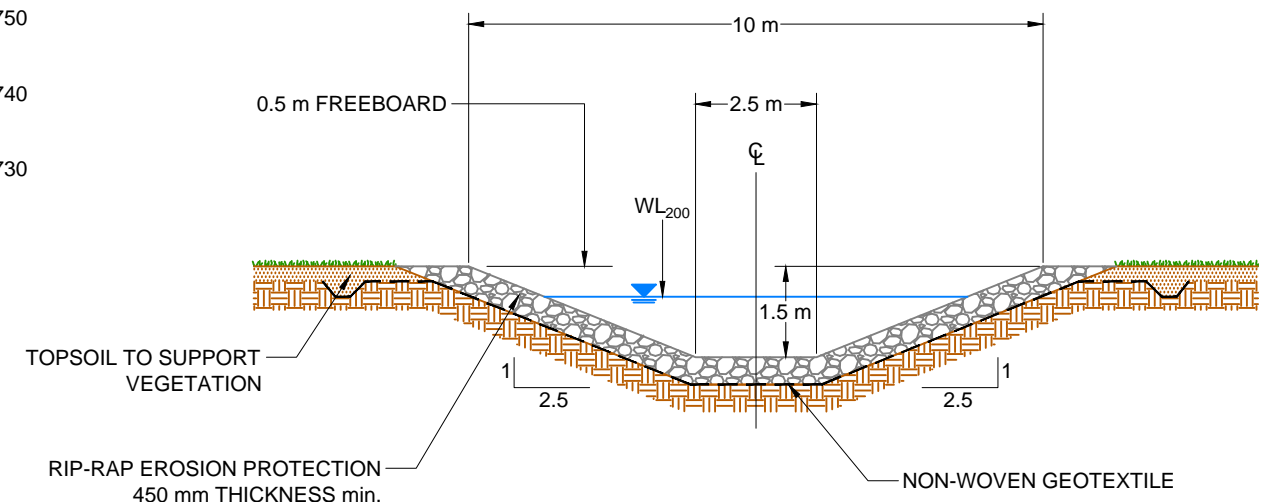


DITCH 400 PROFILE VIEW
5X VERTICAL EXAGGERATION
1:5000 SCALE

NOTE:
TYPICAL SECTION VALID FOR
SLOPES BETWEEN 1% AND 5%

RIP-RAP	
MIN SIZE	200 mm
D ₅₀	300 mm
MAX SIZE	500 mm

**ISSUED FOR REVIEW
NOT FOR CONSTRUCTION**



DITCH 400 TYPICAL SECTION
NOT TO SCALE

This drawing has been prepared for the use of Access Mining Consultants Ltd.'s client and may not be used, reproduced or relied upon by third parties, except as agreed by Access Mining Consultants Ltd. and its client, as required by law for use of governmental reviewing agencies. Access Mining Consultants Ltd. accepts no responsibility, and denies any liability whatsoever, to any party that modifies this drawing without Access Mining Consultants Ltd.'s express written consent.

DATE	ISSUE/REVISION	REV. No.	DRW.	APP.
2013-09-13	ISSUED FOR REVIEW	00	KB	JT



PROJECT NAME:
**Minto Mine Phase IV
Reclamation and Closure Plan**
Revision 4.0

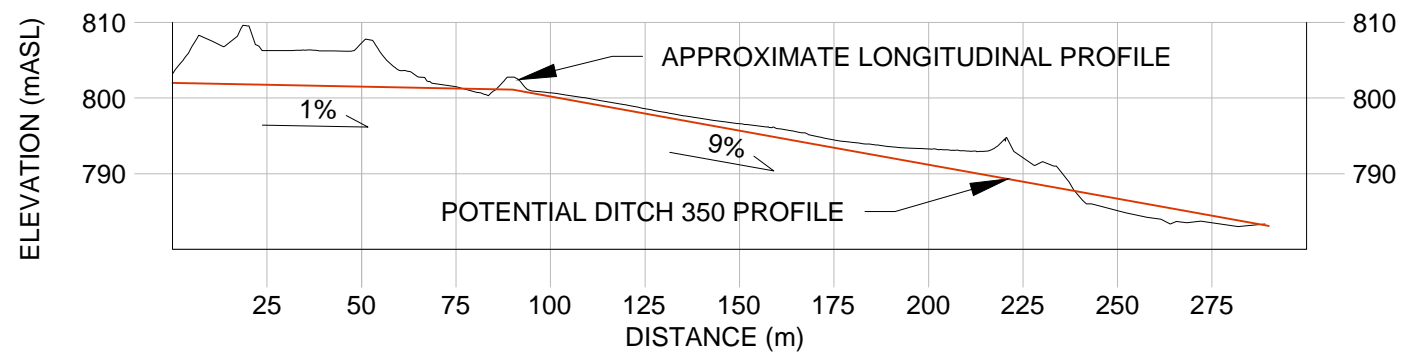
DRAWING NAME:
**DITCH 400
PLAN AND PROFILE**

DESIGNED BY: D. Morissette	ACCESS PROJECT NO: MIN-11-01	CLIENT REF.:
DRAWN BY: K. Boldt	DRAWING SCALE:	
CHECKED BY: J. Theriault	DRAWING NO: 04	REV.: 00



DITCH 450 PLAN VIEW
1:4000 SCALE

**ISSUED FOR REVIEW
NOT FOR CONSTRUCTION**

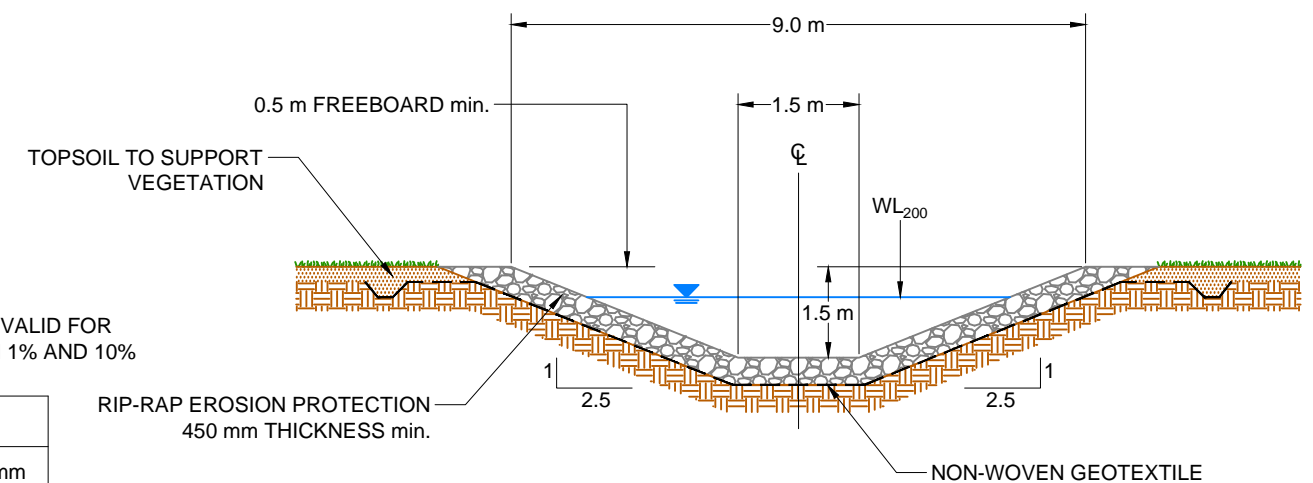


DITCH 450 PROFILE VIEW

2X VERTICAL EXAGGERATION
1:2000 SCALE

NOTE:
TYPICAL SECTION VALID FOR
SLOPES BETWEEN 1% AND 10%

RIP-RAP	
MIN SIZE	200 mm
D ₅₀	300 mm
MAX SIZE	500 mm



DITCH 450 TYPICAL SECTION
NOT TO SCALE

This drawing has been prepared for the use of Access Mining Consultants Ltd.'s client and may not be used, reproduced or relied upon by third parties, except as agreed by Access Mining Consultants Ltd. and its client, as required by law for use of governmental reviewing agencies. Access Mining Consultants Ltd. accepts no responsibility and denies any liability whatsoever, to any party that modifies this drawing without Access Mining Consultants Ltd.'s express written consent.

DATE	ISSUE/REVISION	REV. No.	DRW.	APP.
2013-09-13	ISSUED FOR REVIEW	00	KB	JT



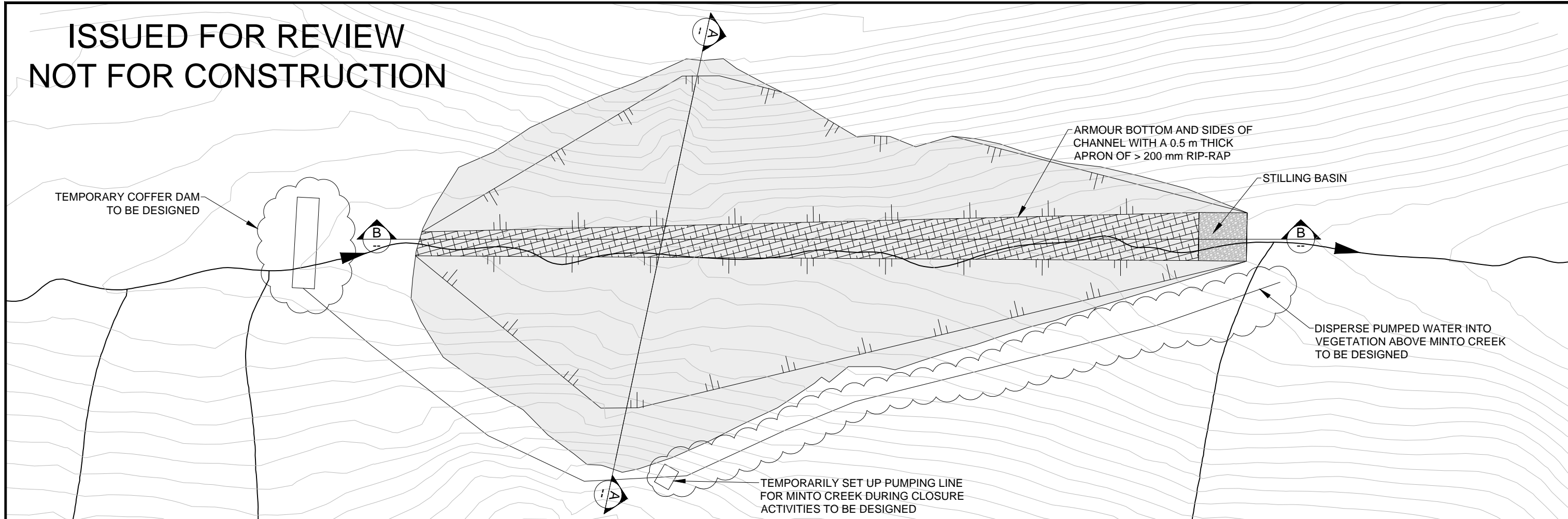
PROJECT NAME:
**Minto Mine Phase IV
Reclamation and Closure Plan**
Revision 4.0

DRAWING NAME:
**DITCH 450
PLAN AND PROFILE**

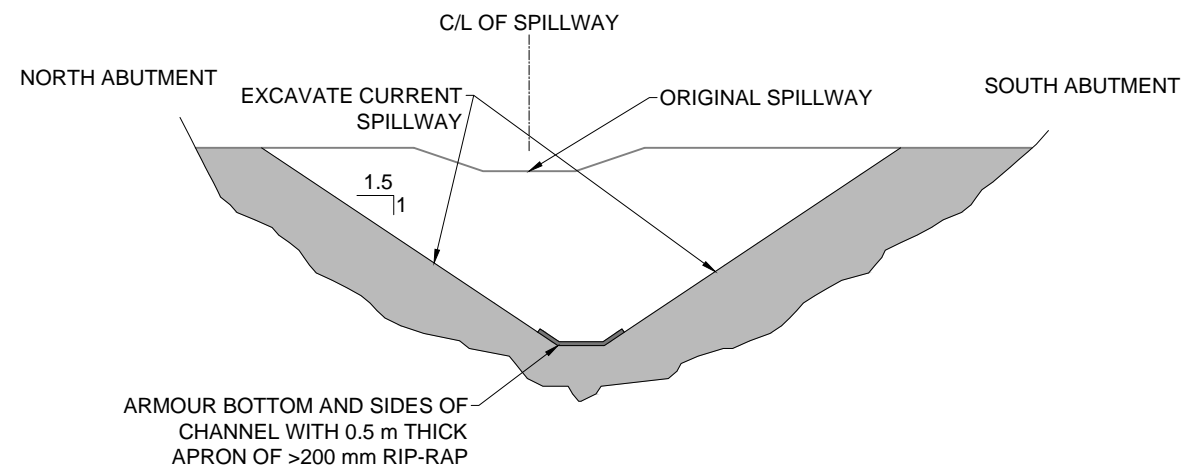
DESIGNED BY: D. Morissette	ACCESS PROJECT NO: MIN-11-01	CLIENT REF.:
DRAWN BY: K. Boldt	DRAWING SCALE:	
CHECKED BY: J. Theriault	DRAWING NO: 05	REV.: 00

C:\Users\lboldt\Projects\Minto\CAD Drawings\MINTO-11-01-005.dwg

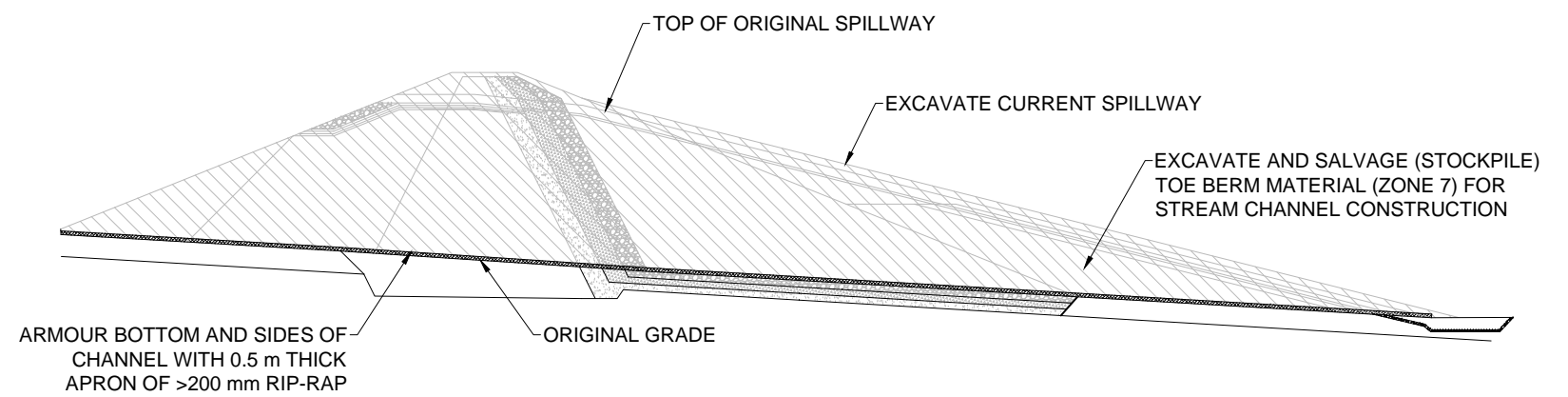
**ISSUED FOR REVIEW
NOT FOR CONSTRUCTION**



PLAN VIEW - WATER STORAGE POND DAM - TO BE REMOVED



A SECTION - CENTRELINE OF DAM CREST



B WATER STORAGE POND DAM - TO BE REMOVED

NOTE:
DRAWING REPRODUCED IN PART FROM FIGURE 6-19 OF MINTO MINE DECOMMISSIONING AND RECLAMATION PLAN ver. 3.2

This drawing has been prepared for the use of Access Mining Consultants Ltd.'s client and may not be used, reproduced or relied upon by third parties, except as agreed by Access Mining Consultants Ltd. and its client, as required by law for use of governmental reviewing agencies. Access Mining Consultants Ltd. accepts no responsibility and denies any liability whatsoever, to any party that modifies this drawing without Access Mining Consultants Ltd.'s express written consent.

2013-09-13	ISSUED FOR REVIEW	00	KB	JT	
DATE	ISSUE/REVISION	REV. No.	DRW.	APP.	



PROJECT NAME:
**Minto Mine Phase IV
Reclamation and Closure Plan**
Revision 4.0

DRAWING NAME:
**REMOVAL OF WATER
STORAGE POND DAM
AT CLOSURE**

DESIGNED BY: EBA	ACCESS PROJECT NO: MIN-11-01	CLIENT REF.:
DRAWN BY: K. Boldt	DRAWING SCALE: 1:1000	
CHECKED BY: J. Theriault	DRAWING NO: 06	REV.: 00

C:\Users\boldt\Projects\Minto\CAD\Drawings\MINTO-11-01-006.dwg