

APPENDIX I

Approach to Primary Data Collection

Appendix I

Approach to Primary Data Collection

Primary data is defined in this Study as information collected directly from first-hand experience through the use of social science methods. Primary data was collected from the communities of Pelly Crossing and Minto within the LSA. Primary data was collected using an adaptive, community-based process established with SFN during the Minto *Selkirk First Nation Traditional Knowledge Study* (KCB 2011) and from ongoing engagement with the SFN community. The community-based approach was designed to facilitate meaningful community involvement and foster a transparent study process. Study activities that illustrate its approach included:

- holding a community meeting to provide information about the Study and to ‘kick-off’ Study activities with the SFN community;
- maintaining an inclusive approach to Study participation, whereby all SFN citizens were invited to participate in the Study, in addition to key knowledge holders, service workers, and LSA residents;
- advertising Study events through community postings; letters; and meetings; and
- communicating project developments to the SFN community through newsletters, meetings, and handouts.

As established in the *Selkirk First Nation Traditional Knowledge Study* (KCB 2011) following a request from SFN Elders, all Study meetings were open to the entire SFN community to promote learning and transparency. The adaptive nature of the Study was further demonstrated through the addition of such activities during the Study as:

- conducting additional meetings with the SFN community and councils (i.e., SFN Elders Council);
- utilizing multiple data collection methods (i.e., one-on-one interviews, small group interviews, community meetings, etc.); and
- arranging data collection events in appropriate settings (i.e., interviewee workplace, interviewee home, etc.).

In an effort to demonstrate the principle of reciprocity, which is recognized as an important component of Aboriginal collaborative research (Hankins and Ross 2008), participants were given a personalized, custom-made, handwritten thank you card to express appreciation for their contributions and involvement following Study events. SFN citizens and interviewees representing their own and/or family interests were given honoraria by Minto in appreciation of their valuable contributions and time spent being interviewed by the Study’s research team.

Methodological Framework

The Study’s methodological framework provided a visual guide to how the Study would be conducted, what methods and products were proposed, when Study events were planned to be conducted, and why Study events were planned, with respect to the various phases of work (Figure 1). Over the course of the Study, the original timeline was adjusted with respect to scheduling, availability and Study developments. The Study timeline was extended from October 2012 to June 2013. The Study’s trip schedule was also adjusted with respect to community consideration, availability and scheduling. ‘Data verification’ proposed to be the central focus of Trip 4 was conducted as part of Trip 3 and data verification was completed over- the-phone with remaining interviewees. At the time that this report was prepared, Trip 4 and 5 had not been conducted, but discussions with Minto and SFN to conduct these trips following the publication report have been ongoing to facilitate further discussion with SFN and SFN leadership (Trip 4) and to present the results of the report to the community (Trip 5).



Figure 1 Socio-economic Study Methodological Framework

Community Communications

Community Postings

Community postings were used to advertise Study events and activities. Examples are provided in Figure 2 and Figure 3.



The image shows a community posting for a meeting. It features a yellow background with a blue wavy border at the top and bottom, and red wavy borders on the left and right sides. At the top, there is a photograph of a river flowing through a landscape with green trees and mountains in the distance under a blue sky with white clouds. Below the photo, the title "Minto Mine Socio-Economic Study Community Meeting" is written in a bold, blue, sans-serif font. Underneath the title, there are four sections of text, each starting with a bolded word: "Who:", "What:", "When:", and "Where:". The "Why:" section is a longer paragraph. At the bottom, there are two lines of text providing contact information for Teri-Lee and Deanna, including phone numbers and email addresses.

**Minto Mine
Socio-Economic Study
Community Meeting**

Who: Everyone is welcome!

What: We would like to share study information with you, speak with you and learn from you.

When: Tuesday, August 14, 2012 from 1:00 pm – 2:30 pm

Where: Link Building

Why: A socio-economic study looks at the potential effects a project may have on people and communities. The knowledge shared in this study will be used by Minto Ex to prepare the Application for the Yukon Environmental and Socio-Economic Assessment Board (YESAB) in order to seek approval to extend the life of the Minto Mine.

For more information about this event, please contact Teri-Lee at:
Phone: 867-537-3043, Email: yukonme30@hotmail.com

For more information about this study, please contact Deanna at:
Phone: 604-251-8528, Email: dyim@klohn.com

Figure 2 Community Posting, August 14, 2012 Community Meeting

**Minto Mine Phase 5 / 6
Community Meeting**



Who: Everyone is welcome!
When: Tuesday, October 16, 2012
Where: Link Building
What: A Community Information Meeting and Open House
Community Presentation: 2:00pm and 5:30pm
(the same presentation)
Open House: 3:00pm to 5:00pm
Community Dinner: 5:00pm
Why: To learn more about the Minto Mine Phase 5 / 6 Project and the ongoing Socio-Economic Study.

We hope to see you there!

**For more information, please contact Deanna Yim at:
Phone: 604-251-8528, Email: dyim@klohn.com**



**CAPSTONE
MINING CORP.**
MINTO MINE

Figure 3 Community Posting, October 16, 2012 Community Meeting

[Newsletters](#)

Newsletters providing an update on Study progress and activities were provided to the SFN community in Pelly Crossing in October 2012 about the Study and about the Phase V/VI proposed

project (Appendix I-A). These newsletters were distributed through the Canada Post to mailboxes in Pelly Crossing, and made available at Study events.

Community Handouts

Handouts were provided to the community at all Study events (Appendix I-B). These handouts included such materials as a copy of the presentation, copies of project newsletter(s), YESAB fact sheets, and Minto Mine project information.

Study Activities and Trips

Study activities began with the SFN community in May 2012 and were completed in January 2013. During this time, three trips to the Pelly Crossing community and one trip to Whitehorse were conducted by members of the Study's research team.

Trip 1- May 2012

A community meeting was conducted on May 31, 2012 to introduce the Study to the SFN community.

Trip 2- August 2012

A trip to Pelly Crossing was conducted from August 14, 2012 to August 17, 2012 to begin primary socio-economic data collection for the Study. A community meeting and a meeting with the SFN Elders Council was conducted during this trip to share about the Study with the SFN community.

Trip 3- October 2012

The Study's third trip was conducted from October 16, 2012 to October 22, 2012 in Pelly Crossing, to continue socio-economic data collection and verification activities.

Trip 4- January 2013

This trip was planned in response to an invitation to present a brief overview of the Study to SFN citizens residing in Whitehorse, at an SFN meeting held in Whitehorse. No data was collected during this trip.

Recording Methods

Researchers sought the most culturally appropriate and relevant recording methods to respectfully work, and engage, with SFN citizens. Hand written notes were the main recording method used during all data collection events. The majority of data collection events involved more than one researcher. Notes were cross-referenced between researchers, wherever possible. Video and audio digital recordings were not taken during any of the Study's events.

Data Validation and Confirmation

Digital summaries of all interviews were compiled and prepared from the notes of researchers. All digital summaries were returned to interviewed individuals for content verification and confirmation.

The interviewee confirmation process provided each interviewee an opportunity to revise and confirm their contributions before their inclusion in the Study. The research team gave interviewees the option of reviewing their contributions independently or orally with a member of the Study's research team. All revisions made by interviewees were accepted and used for subsequent reporting and archiving (where applicable).

Protection and Rights of Interviewees and their Contributions

Protecting and respecting the rights and contributions of all Study participants was an important principle of the Study. The following sections detail how this was achieved.

Informed Consent

Two versions of the Study's Informed Consent Form were developed using the SFN Traditional Knowledge Study Informed Consent Form, from the Minto *Selkirk First Nation Traditional Knowledge Study* (KCB 2011), as a template. The two versions of the Informed Consent Form were designed for *SFN Community Members*, and *Administration, Agency and/or Organization Staff*, respectively (Appendix I-C). The two versions were prepared in consideration of the different types of interviewees.

The Informed Consent Form was reviewed and discussed with each interviewee at the beginning of an interview. That review and discussion was undertaken in a consistent manner for all interviewees, regardless of which form was used. The discussion also included the following topics:

- the Study's purpose and funding source;
- participants rights (including ownership and protection of contributions);
- confidentiality;
- why their involvement was sought; and
- storage and archiving of contributions.

At all interviews, KCB researchers read the Informed Consent Form out loud with interviewees.¹ The interviewee was always given the opportunity to comment and ask questions at any time. If and when the interviewee was comfortable with the Informed Consent Form, they could provide their written (by signing the document) or oral consent. If a written consent was given, two copies of the Informed Consent Form were signed. One copy was kept by the interviewee and the other by the KCB researcher, so that all parties involved had a copy of the same document. One interviewee provided their oral consent to have their contributions considered in the Study once the Informed Consent Form was read and discussed, as they felt that the oral consent was more appropriate for them than a written consent. This individual's contributions will be considered in the Study.

¹ At one interview with a service provider, the ICF was not read out loud prior to the beginning of the interview.

Informed Consent Forms were not reviewed or required from individuals who contributed information at various public events (i.e. community meetings, Elders Council meeting, etc.), as this was considered to be ‘public information’ since it was shared at a public community event.

Not all interviewees signed an Informed Consent Form, following a review and discussion of its content. Researchers respected each individual’s decision to sign or not sign the document. Some interviewees representing various service agencies did not want to sign an Informed Consent Form despite wanting their contributions to be considered in the Study. As these individuals were providing public data on behalf of their service agency, their contributions will still be included in the Study; however, their contributions will not be archived and their names will not be publicly acknowledged.

Participation and Involvement

Participation in this Study was voluntary. As outlined in the Study’s Informed Consent Form, if at any time, or for any reason, an interviewee decided to cease their involvement with the Study they dictated whether or not their contributions would be used.

Confidentiality

The identity and contributions of interviewees was held in confidence by the Study research team and only used for the Phase V/Phase VI YESAA proposal, in the manner decided and outlined by each interviewee in their respective Informed Consent Form. Each interviewee decided whether or not they wanted their name to appear in the Study’s findings. In the absence of a signed Informed Consent Form, the interviewee’s name was not revealed and contributions will not be included in the SFN archives.

Storage and Archiving of Contributions

All contributions gathered in this Study were securely stored. Computer files were password protected and written files were kept in a locked file cabinet in the KCB, Vancouver office. In each interviewee’s Informed Consent Form, they outlined whether or not they wanted their contributions to be archived in the SFN archives at the completion of the Study. All interviewees who designated their contributions for the SFN archives will have their Study materials (i.e., summarized notes) prepared and given to the SFN archives, with any restrictions listed in their signed Informed Consent Form.

REFERENCES

- Klohn Crippen Berger (KCB). 2011. Selkirk First Nation Traditional Knowledge Study: Baseline Report (Draft).
- Hankins, D. L., & Ross, J. 2008. Research on Native Terms: Navigation and Participation Issues for Native Scholars in Community Research. In C. Wilmsen, W. Elmendorf, L. Fisher, J. Ross, B. Sarathy & G. Wells (Eds.), *Partnerships for Empowerment: Participatory Research for Community-based Natural Resource Management* (pp. 239-257). Sterling: Earthscan.

APPENDIX I-A

Newsletters

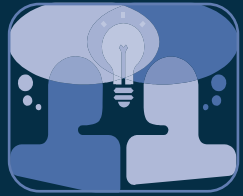
How Can I Get More Information and Share My Ideas?

There are several opportunities for you to provide your comments about the Phase 5/6 Proposal including:

- Before the proposal is submitted to YESAB;
- During the YESAB assessment process; and
- During the regulatory process for permits and licences,

Please feel free to contact the Minto Mine team at anytime to share your comments. If you would like more information about the Minto Mine, or the Phase 5/6 Proposal, please feel free to contact **Jennie Gjertsen** or **Ron Light**.

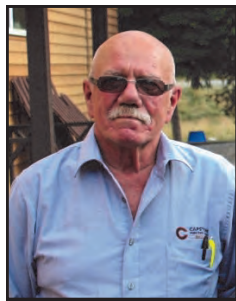
If you would like more information about the Minto Phase 5/6 Socio-economic Study, please contact **Deanna Higginson**.



Minto Mine Contact Information

CAPSTONE MINING CORP. Minto Mine

P.O. Box 33174, Whitehorse, Yukon, Canada, Y1A 6S1



Ron K. Light,
Minto Mine General Manager
Phone: 604.759.4639
Cell Phone: 604.319-0456
Fax: 604.759.0861
Email: rlight@capstonemining.com



Jennie Gjertsen,
Minto Mine Environmental Manager
Phone: 604.759.0860 (ext. 462)
Toll Free Phone: 866.684.8894
Email: jennieg@mintomine.com
Website: www.capstonemining.com

Minto Phase 5/6 Socio-economic Study Team Contact Information



Debra Lamash,
Socio-economic Study Project Manager
Phone: 604.669.3800
Fax: 604.669.3835
Email: dlamash@klohn.com
Website: www.klohn.com



Teri-Lee Isaac
*SFN—Minto Socio-economic Study
Community Researcher*
Phone: 867.537.3043
Email: yukonme30@hotmail.com



Deanna Higginson (Yim),
Socio-Environmental Study Researcher
Phone: 604.669.3800
Email: dhigginson@klohn.com



Mary Smulders,
Socio-Environmental Study Researcher
Phone: 604.669.3800
Email: msmulders@klohn.com



Minto Mine Community Newsletter

OCTOBER 2012



This issue

Recent Community Events **P.1**

Phase 5/6 Fast Facts **P.2-3**

Minto Mine Job and Training Info **P.3**

Contact Information **P.4**

Introducing New Minto Mine Team Members

Ron Light, *Minto Mine General Manager*

Ron joined the Minto team on July 4, 2012, and brings over 40 years of experience in mine management, engineering, operations, maintenance, and mine expansions in both open pit and underground mining. Welcome Ron!



Jennie Gjertsen, *Minto Mine Environmental Manager*

Jennie joined the Minto team in November 2011, and is responsible for managing the environmental requirements at the Minto Mine site. Jennie has worked in the Yukon mining sector as an Environmental Coordinator for the past five years. Welcome Jennie!

Recent Minto Mine Community Events

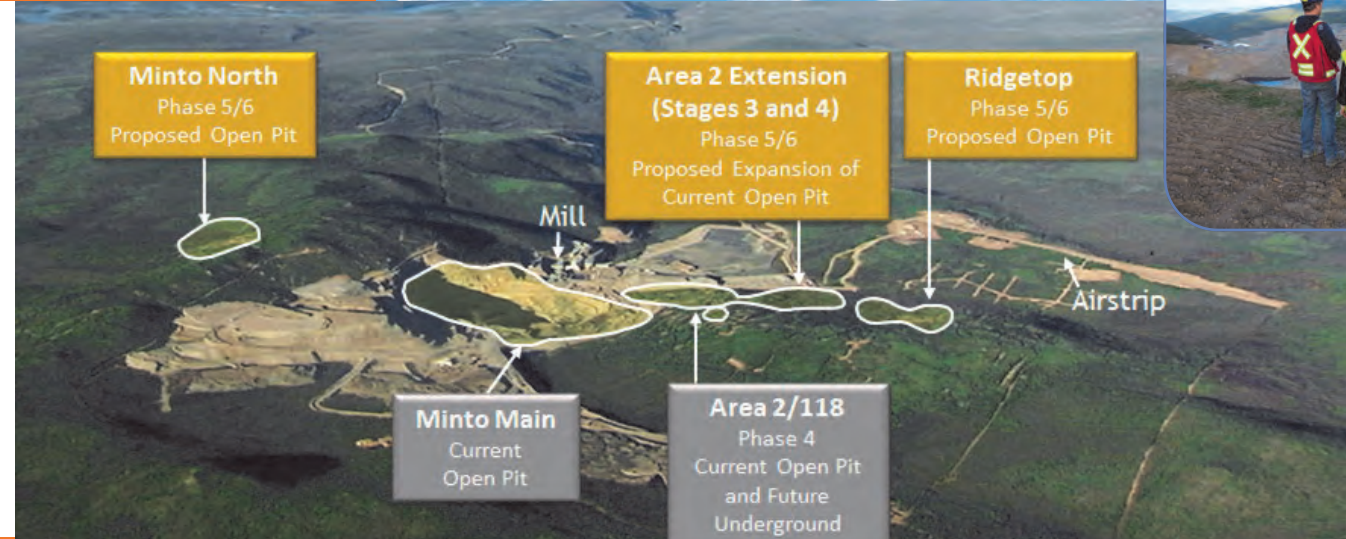
On October 16, 2012 the Minto team held a community meeting at the Link Building in Pelly Crossing, to share information about the Minto Mine and the Phase 5/6 Proposal.

About 35 Selkirk First Nation (SFN) members attended the meeting. Many good questions were asked and valuable feedback was provided. A community dinner was shared following the meeting.





Minto Mine Phase 5/6 Fast Facts



What is Phase 5/6?

Phase 5/6 is a proposed expansion of the current Phase 4 operations at the Minto Mine that would:

- extend surface mining until 2017;
- include underground mining until 2019; and
- involve milling of stockpiled ore to 2022.

Phase 5/6 includes:

- creating two new open pits known as 'Ridgetop' and 'Minto North';
- expanding the current 'Area 2' pit;
- starting underground mining; and,
- expanding waste rock disposal areas within the existing mine footprint.

Phase 5/6 Consultation

SFN community consultation is a key element of the Minto Mine's Phase 5/6 Proposal to YESAB.

Minto Mine has already been using input from the SFN in planning in a number of areas including water management and fisheries.

Minto Mine welcomes and appreciates interest from everyone interested in the mine. Future communications will share how feedback is used in the Phase 5/6 Proposal.

What Studies Are Being Completed for the Phase 5/6 YESAB Proposal?

Many studies are being completed by the Minto Mine as part of their current Phase 4 operations and in preparation for their Phase 5/6 Proposal. Some of these studies are:



Water Quality Monitoring
(surface and groundwater)



Engineering and Economic Studies
(stability, drilling, etc.)



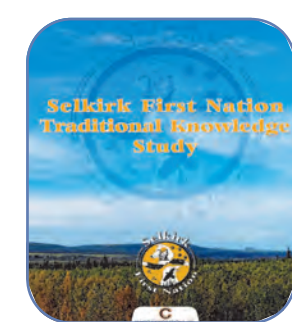
Fisheries and Aquatic Invertebrate Monitoring



Wildlife Surveys



Vegetation and Soils Surveys



SFN Traditional Knowledge Study

Has Phase 5/6 Been Approved?

No, before Phase 5/6 can be approved the Minto Mine must submit a Proposal to the Yukon Environmental and Socio-economic Assessment Board (YESAB) for the expansion. The Proposal must include such things as a project description, engineering information, information on potential environmental and socio-economic effects and mitigation measures. Some of the studies that Minto is conducting with SFN to gather this information include:

- The Minto— SFN Traditional Knowledge Study;
- The Minto Phase 5/6 Socio-economic Study; and
- Consultation activities.

Minto Mine Jobs and Training

Potential jobs and training opportunities are posted by the Minto Human Resources (HR) team through the Minto Mine Employment Liaison. Job postings are available in the SFN Administration Building.

Mary McGinty is the Minto Mine Employment Liaison, based in Pelly Crossing. Her email address is: mintoliation@selkirkfn.com.

Please feel free to get in touch with Minto HR (hr@mintomine.com) or Mary to discuss potential jobs and training opportunities.

The Minto Mine Team is working to complete their Phase 5/6 Proposal and submit it to YESAB by the end of 2012.

The Minto Mine Phase 5/6 Socio-economic Study Community Newsletter

October 2012

Why is the Minto Phase 5/6 Socio-economic Study Being Done?

Minto wants to expand the Minto Mine to extend the life of the mine. The knowledge shared in this study will be used by Minto to prepare the Phase 5/6 Proposal required by the Yukon Environmental and Socio-economic Assessment Board (YESAB) prior to project approval.

This study will also be used to try and make the proposed expansion better for people, the community, and the Minto Mine.

What Do We Want to Learn From this Study?

We want to better understand the social and economic conditions of SFN members and communities, by learning about your values and what is important to you and your family.

We are working with the SFN community to achieve our study's goal, and have been meeting with community members and service workers to learn more about values important to you (presented on the other side of this page). We call the values that are important to you 'Valued Socio-economic Components' or VSCs.

We have looked at the current Phase 5/6 project description and have developed a preliminary list of VSCs that may potentially be influenced by the proposed Phase 5/6 project. This list is constantly being updated to reflect feedback from the SFN community.

We understand that these values can mean different things to different people, and we'd like to know what they mean to you!

Please complete the back page of this newsletter and return to Teri-Lee Isaac, to contribute your voice to this study and to potentially win one of two prizes!

Some pictures taken during our data collection trip in August.

Summary of Study Events to Date

May 31, 2012

Community Kick-Off Meeting

October 16, 2012

A presentation was given at the Minto Mine Community Meeting.

August 14-17, 2012

A Community Meeting and Elders Council Meeting presentation was given. Interviews with community members began.

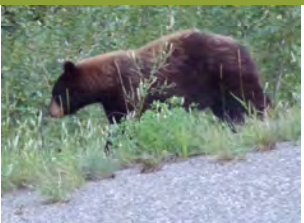
October 22-25, 2012

Data collection and interviews with community members continue.

Return this sheet to Teri-Lee Isaac (phone: 867.537.3043) by 12pm on Friday, November 2, 2012, for a chance to win!

Return for a chance to win 1 of 2 draw PRIZES!

Name: _____ Phone number: _____



Business Opportunities
1 2 3 4 5

Fish, Animals and Wilderness
1 2 3 4 5

SFN Language and Culture
1 2 3 4 5

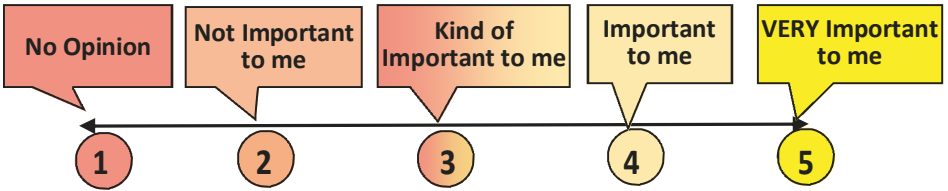
SFN Traditional Knowledge & Traditional Use Activities
1 2 3 4 5

Education and Training
1 2 3 4 5

We would like to hear from YOU, to better understand how YOU think these values might be affected by the proposed Minto Mine Phase 5/6 project.



Please rate the importance of these values in YOUR life, by *circling* a number on the scale listed below each value according to how you feel:



SFN Traditional Economy
1 2 3 4 5



SFN Community Wellness
1 2 3 4 5

Can you please tell us about each of the values that you rated as **4** or **5**?

Value: _____. This value is important to me because,

Value: _____. This value is important to me because,

Value: _____. This value is important to me because,



SFN Leadership and Governance
1 2 3 4 5

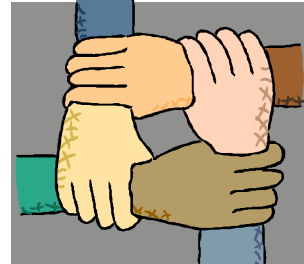


Job Opportunities
1 2 3 4 5

(Please attach additional sheets, if needed!)



SFN Community Growth & Economic Sustainability
1 2 3 4 5



SFN Community Justice & Safety
1 2 3 4 5



Dust
1 2 3 4 5



Noise
1 2 3 4 5



Your Economic Future
1 2 3 4 5