

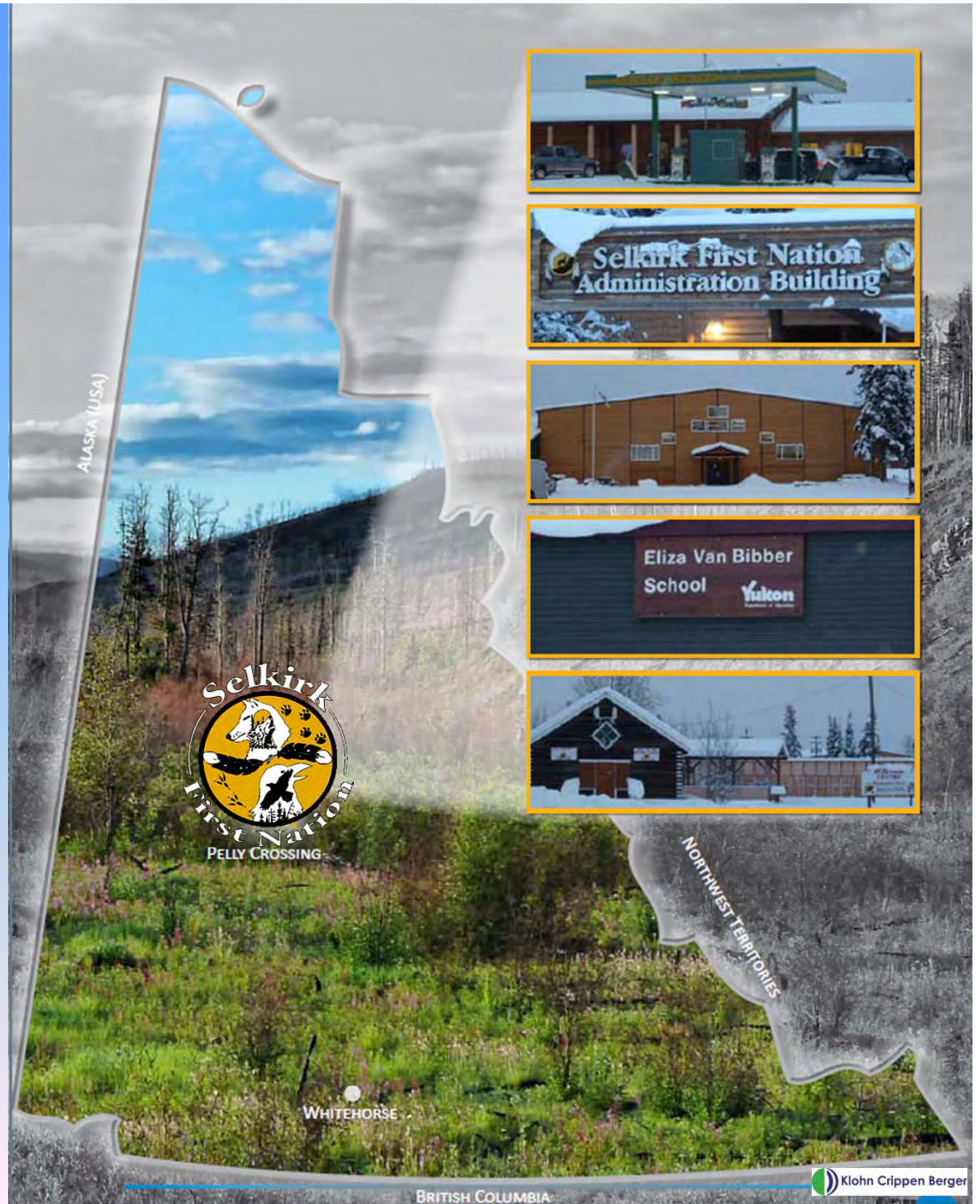
APPENDIX I-B

Handouts

Minto Mine Phase 5 Socio-Economic Study Overview

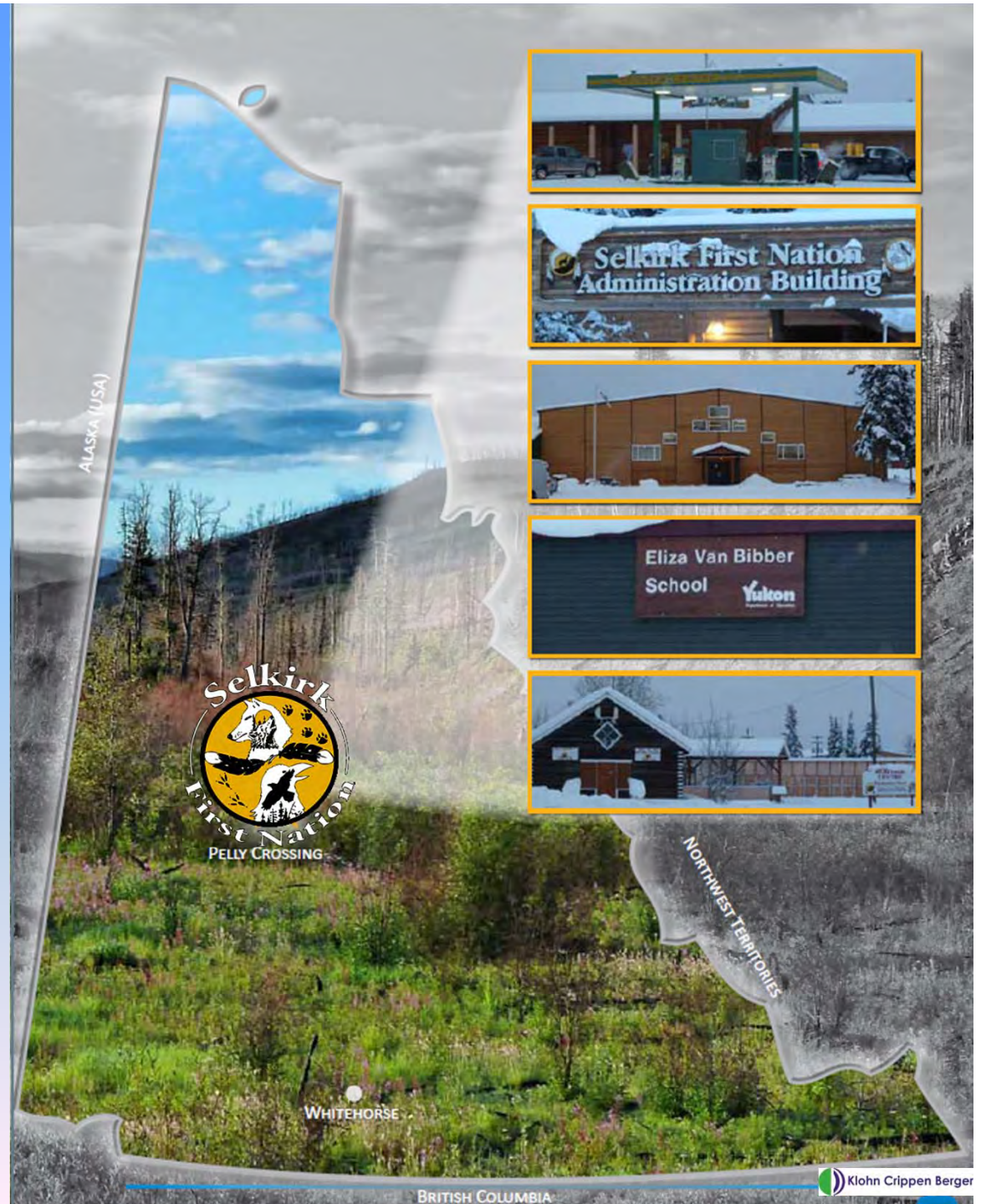
Name: _____

May 31, 2012

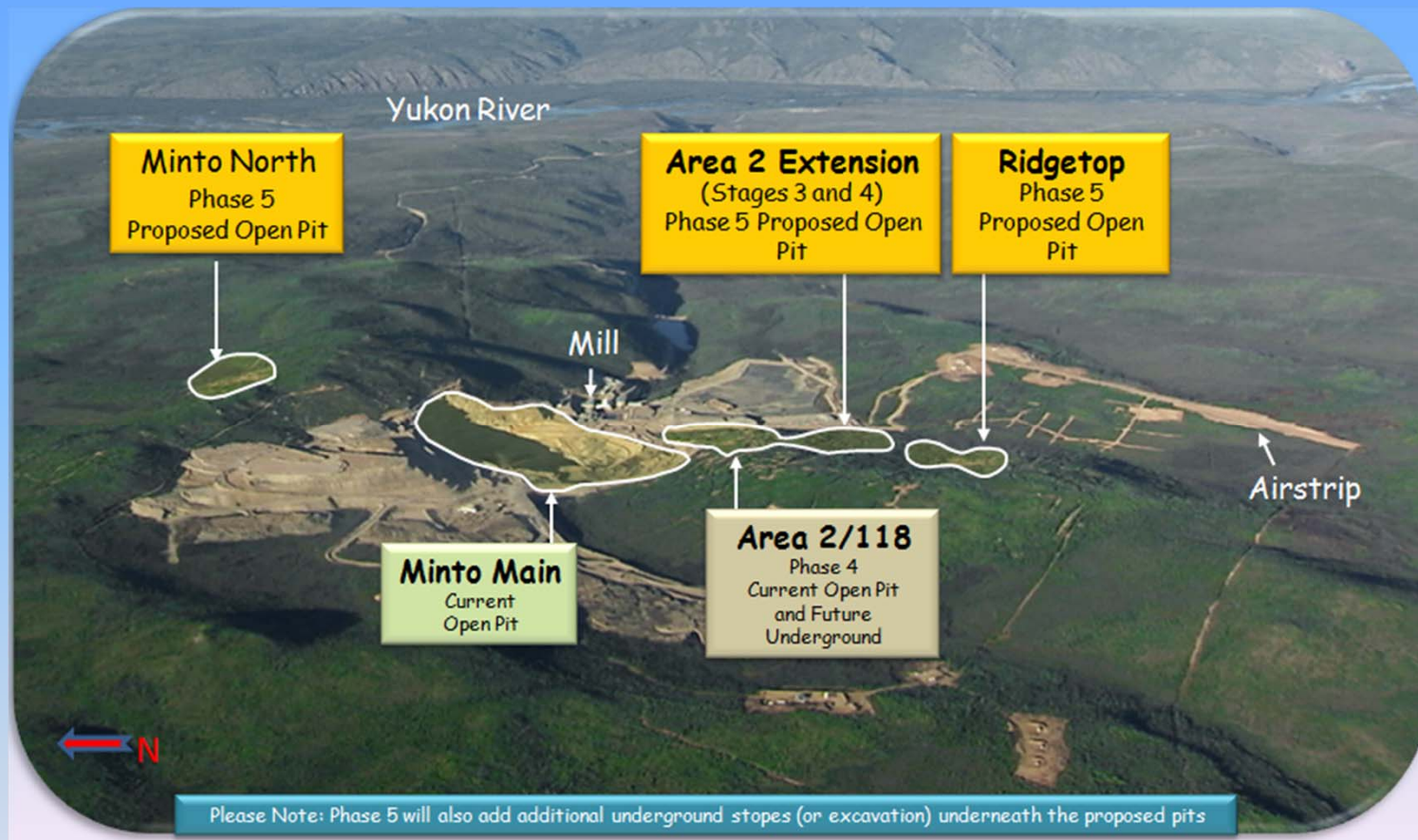


What is a Socio-Economic Study?

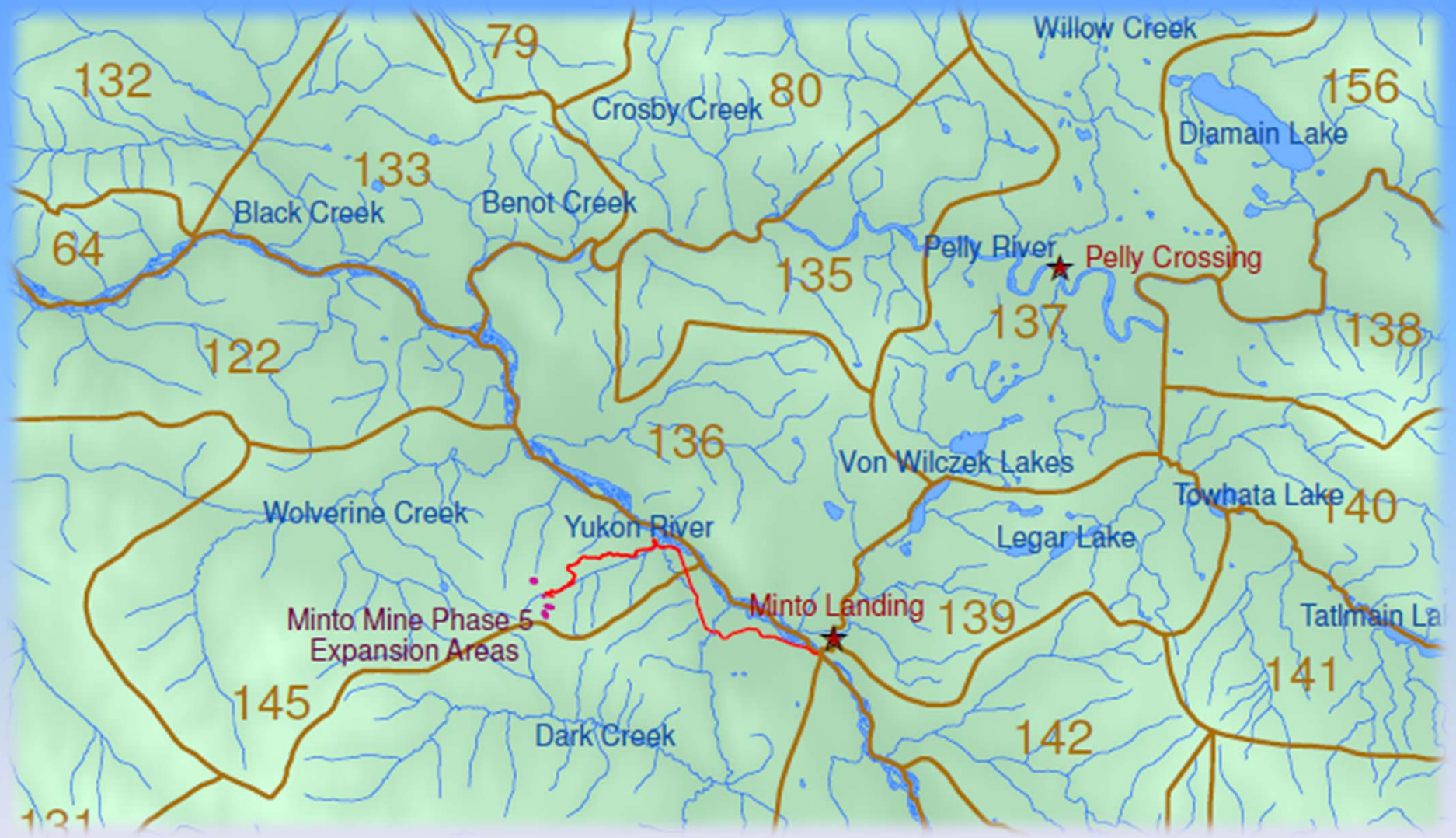
A socio-economic study looks at the effects that a project or activity can have on people and communities.



Why Are We Conducting A Socio-Economic Study?



The socio-economic study is being conducted as part of the Minto Ex Phase 5 Yukon Environmental and Socio-Economic Assessment Board (YESAB) application to extend the life of the Minto Mine.



'Socio' or Social

The "social" part of a socio-economic study considers:

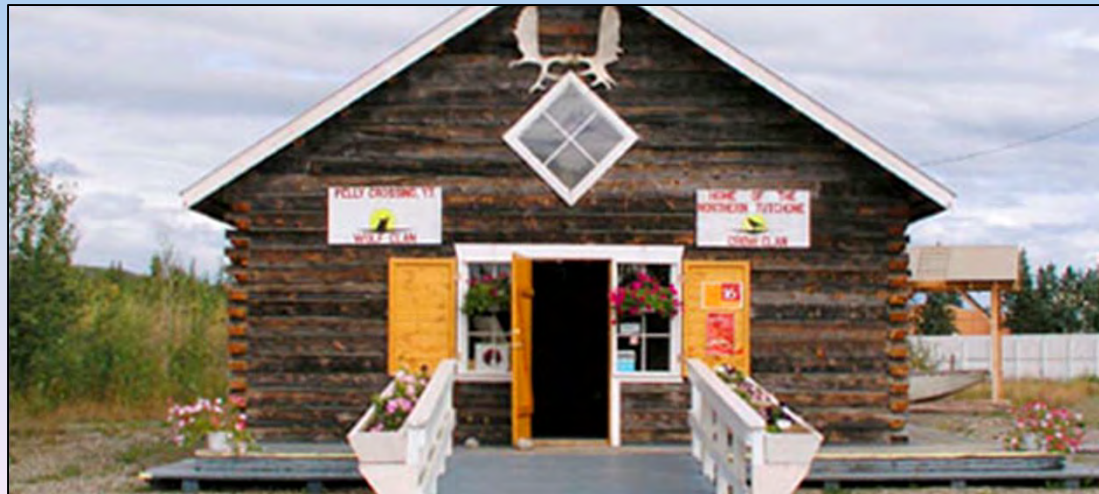
- Housing
- Population
- Demographics (e.g. age, gender, etc.)
- Community Services
- Emergency Services
- Culture and Heritage
- Transportation/Traffic
- Education
- Health
- Wellness



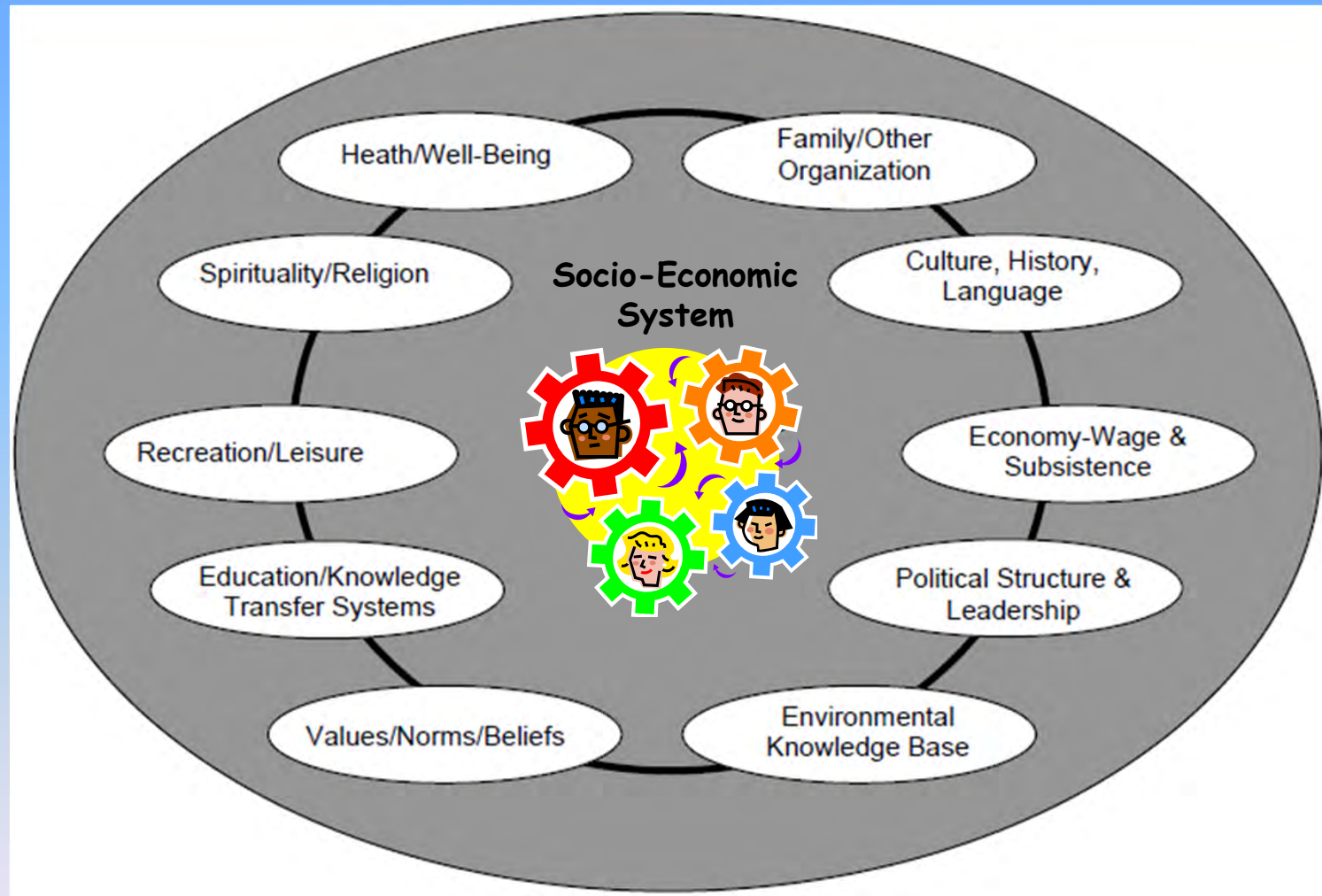
Economic

The “economic” part of a socio-economic study considers:

- Employment
- Income
- Business Development
- Other Economic Sectors
(e.g., trapping, tourism, etc.)

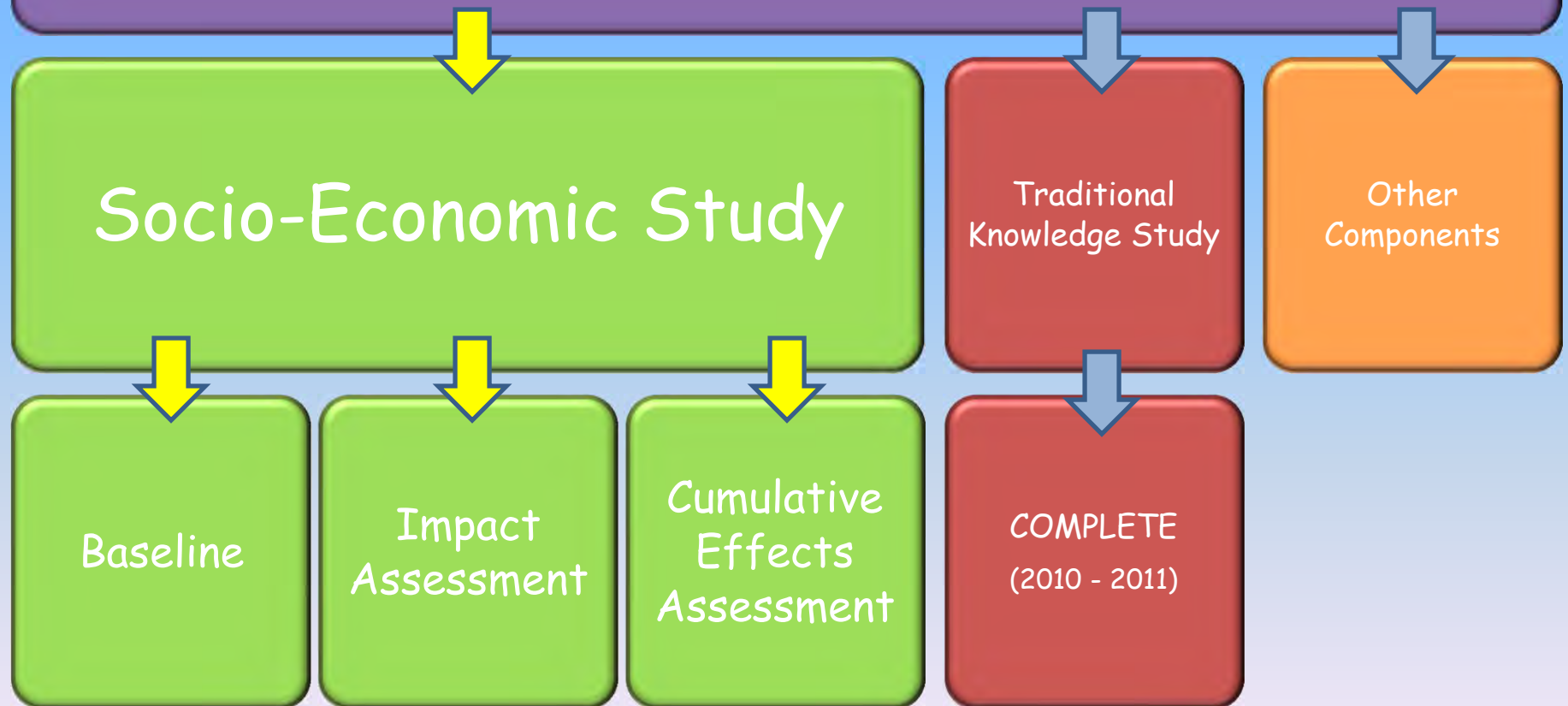


Socio-Economic System



YESAB. 2006. *Guide to Socio-Economic Effects Assessments*. Available at: <http://www.yesab.ca/publications/documents/SEEAfinal200606.pdf>

Minto Phase 5 YESAB Application



Goals of the Socio-Economic Study

Baseline

a) To learn about and document the current Selkirk First Nation (SFN) economy, health, culture, traditions, lifestyles and heritage resources;

Impact
Assessment

b) To assess how the proposed Minto Mine expansion may effect SFN economy, health, culture, traditions, lifestyles and heritage resources; and

Cumulative
Effects
Assessment

c) To assess how the proposed Minto Mine expansion may contribute to cumulative effects.

What is a Socio-Economic Baseline?

- Describes the current social and economic conditions in areas that could be affected by the project.
- Provides a 'benchmark' that future socio-economic studies can be compared against.
- Considers a wide range of items.
- Focuses on items important to people and communities- these are called 'Valued Socio-Economic Components' or VESECs.



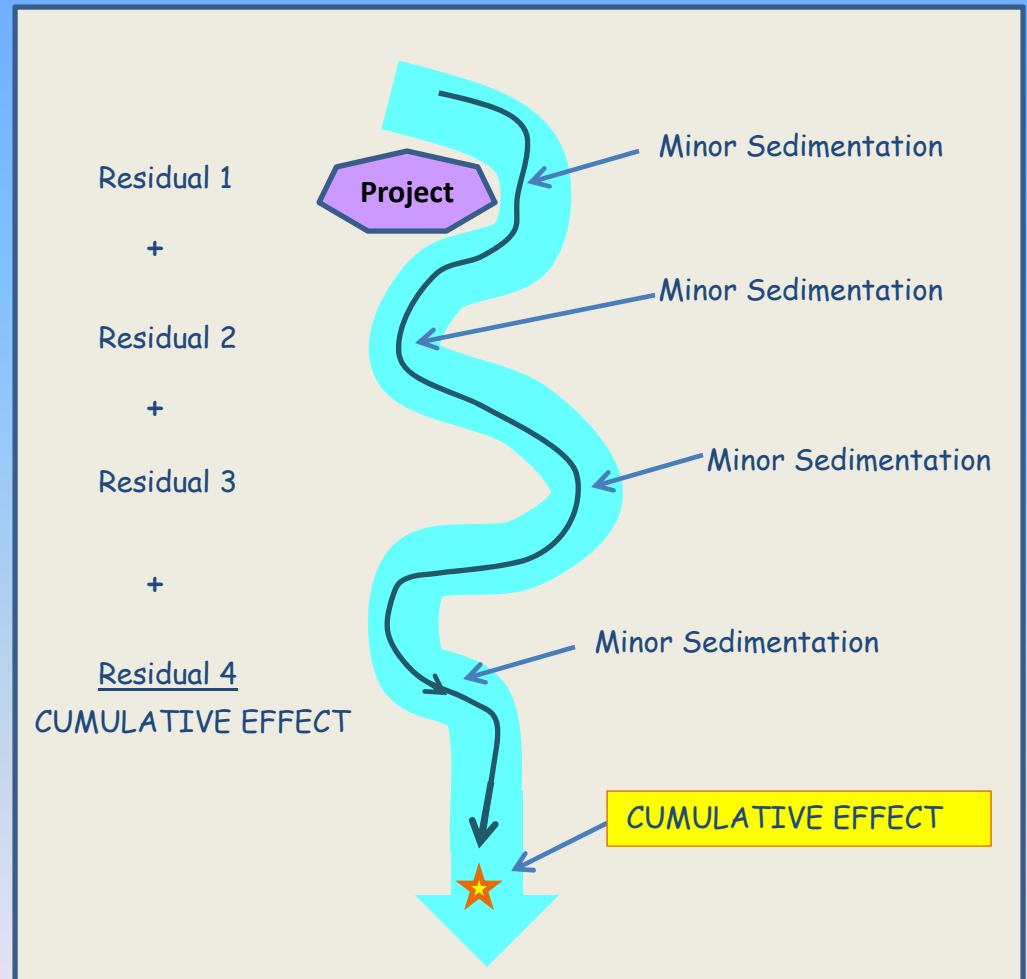
What is a Socio-Economic Impact Assessment?

- Considers how a project affects:
 - people;
 - their communities; and
 - the land they live on.
- We will work with you to assess the potential **social & economic** effects of the proposed Minto Mine expansion on the Selkirk First Nation members and community.



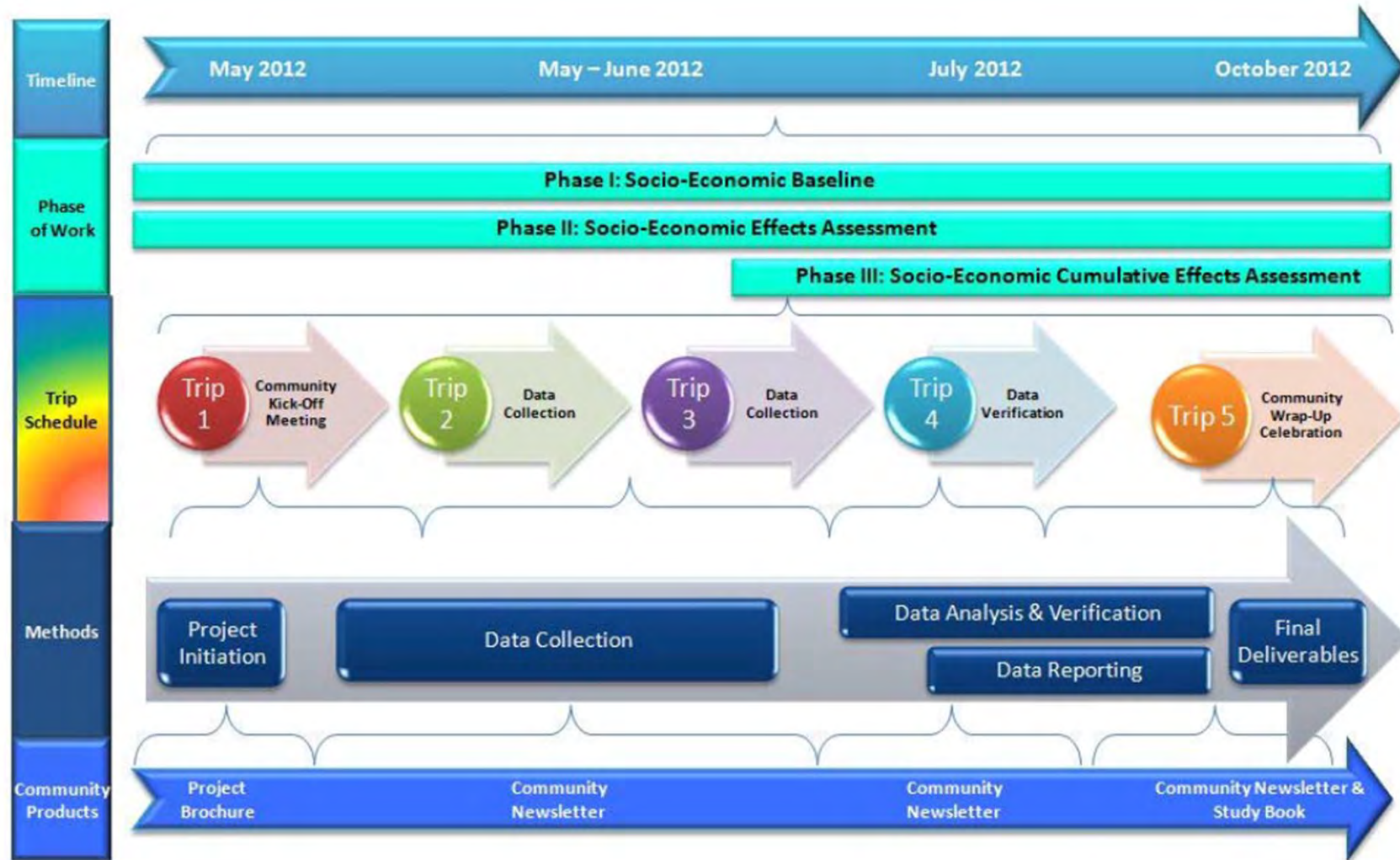
What is a Cumulative Effects Assessment?

- Considers how a project, in combination with other projects, affects:
 - people;
 - their communities; and
 - the land they live on.
- Considers the effects that remain after attempts have been made to reduce or eliminate the effects. These are called “residual effects”.
- We identify any residual effects of the mine expansion and consider whether they could combine with those of other projects to produce cumulative effects.



Source: YESAB. 2005. Assessment of Cumulative Effects. Available at: <http://www.yesab.ca/documents/Cumulativeeffectsfactsheet2.pdf>

How Will We Achieve our Goals?





Data Collection



Protecting and respecting the rights and contributions of all members and organizations involved, is a key component of this study.

- An **Informed Consent Form** is being developed which will outline processes and procedures to be followed, with respect to protecting and respecting team members and their contributions.
- Protocols will developed with involved agencies, as necessary, to outline measures that protect and respect the data being shared with the study.
- Involvement with the study is voluntary.



Data Collection



Socio-economic data will be gathered by conducting interviews with individuals and representatives from organizations and groups, which may include (but not limited to):

- the SFN community;
- the SFN Administration and Departments;
- SFN community service agencies (i.e. RCMP, Health Center, Schools, etc.); and
- SFN and Pelly Crossing businesses.

Information will also be collected by doing research and literature reviews (to access information like statistics).

What Will We Do With the Data?




We will analyze the gathered data to prepare the baseline, effects assessment and cumulative effects assessment.

We use it to try and make the proposed expansion project better for people, the community and Minto Ex.



We will share what we learn in the Minto Ex Phase 5 Application submitted to YESAB.



Minto Mine Phase 5 Socio-Economic Baseline

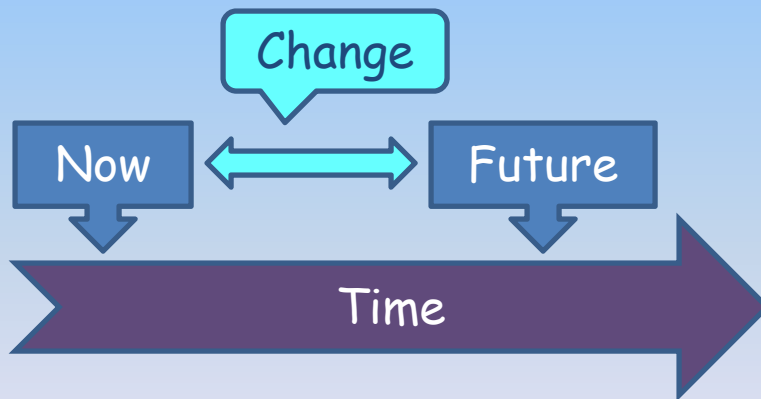
What is a Socio-Economic Baseline?

- Describes the current social and economic conditions in areas that could be affected by the project either directly or indirectly.
- Local and regional study areas will be defined.



What is a Socio-Economic Baseline?

- Provides a 'benchmark' that future socio-economic studies can be compared against.



What is a Socio-Economic Baseline?

- The socio-economic baseline focuses on areas and issues of importance to the local and regional study areas, these are called:

'Valued Socio-Economic Components'
or
'VESECs'



What are VESECs?

- **VESECs** are “parts of the local environment and socio-economic fabric that are valued because of their ecological and/or socio-economic importance¹.”
- **VESECs** can reflect many different things, what **VESECs** have in common is that they reflect important components of the social and/or economic system.



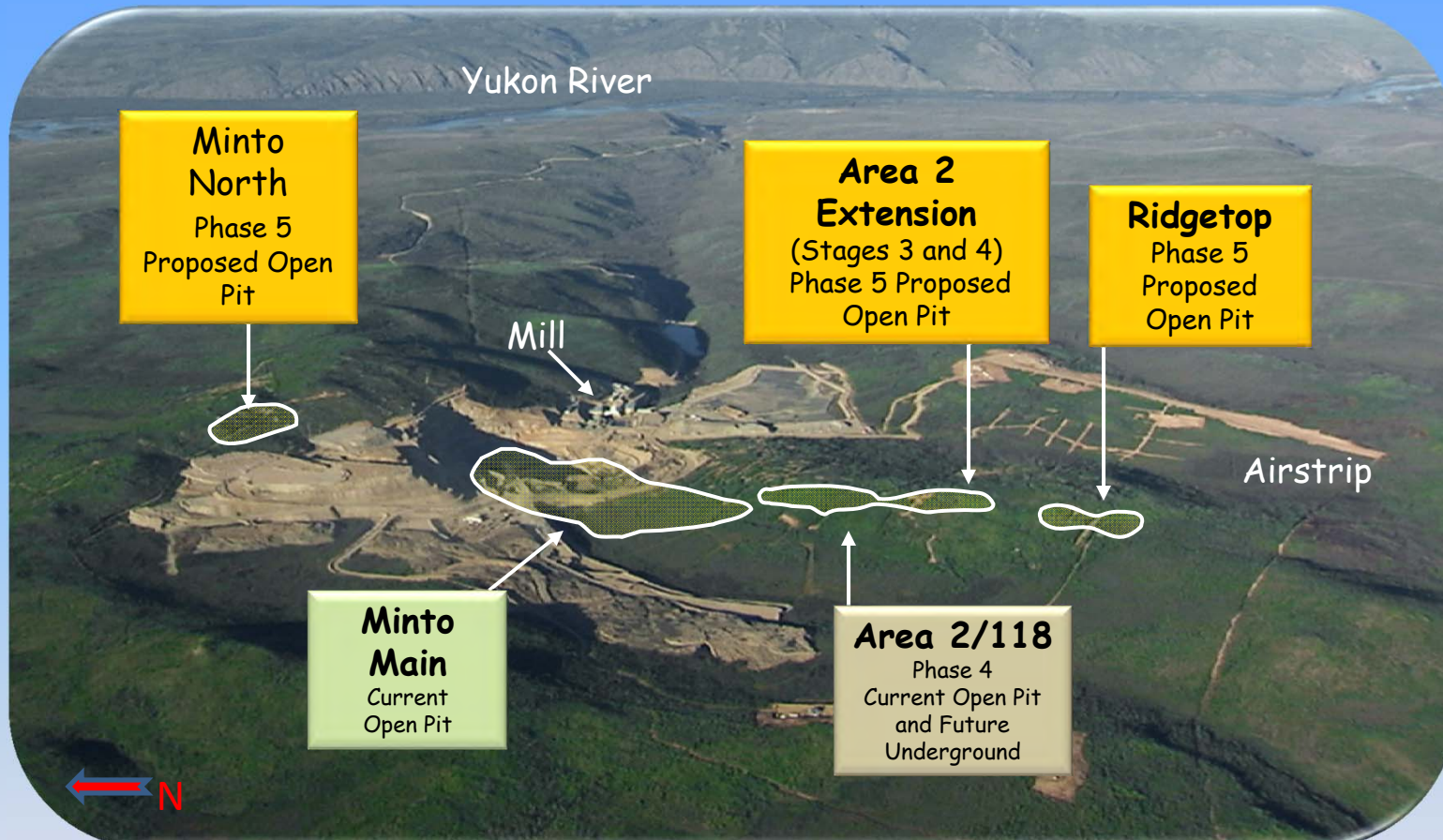
¹YESAB. 2006. *Guide to Socio-economic Effects Assessments*. Available at: <http://www.yesab.ca/publications/documents/SEEAfinal200606.pdf>

Why are VESECs Important?

- **VESECs** are important because they are recognized by the public as being of value.
- **VESECs** can:
 - be important parts of, or connections to, the social-economic system;
 - have economic value; and/or
 - have a role in maintaining the quality of life in a community.



Preliminary Minto Mine Phase 5 VESECs



Please Note: Phase 5 will also add additional underground stopes (or excavation) underneath the proposed pits

A list of 14 preliminary Minto Mine Phase 5 VESECs were developed based on the Minto Mine Phase 5 Project Description.

List of 14 Preliminary Minto Mine Phase 5 VESECs

1. Business Opportunities

2. Dust

3. Education and Training

4. Employment Income

5. Employment Opportunities

6. Noise

7. SFN Community Growth

8. SFN Community Justice and Safety

9. SFN Community Wellness

10. SFN Community Economic Vitality

11. SFN Member Economic Vitality

12. SFN Political Structure and Leadership

13. Traditional Use Activity

14. Wilderness

What do YOU value?

1. Business Opportunities

2. Dust

3. Education and Training

4. Employment Income

5. Employment Opportunities

6. Noise

7. SFN Community Growth

8. SFN Community Justice and Safety

9. SFN Community Wellness

10. SFN Community Economic Vitality

11. SFN Member Economic Vitality

12. SFN Political Structure and Leadership

13. Traditional Use Activity

14. Wilderness

How might these values be affected by the proposed Minto Mine Phase 5 Expansion, and why?

1. Business Opportunities

2. Dust

3. Education and Training

4. Employment Income

5. Employment Opportunities

6. Noise

7. SFN Community Growth

8. SFN Community Justice and Safety

9. SFN Community Wellness

10. SFN Community Economic Vitality

11. SFN Member Economic Vitality

12. SFN Political Structure and Leadership

13. Traditional Use Activity

14. Wilderness

How can potential positive effects be improved and potential negative effects be reduced or eliminated?

1. Business Opportunities

2. Dust

3. Education and Training

4. Employment Income

5. Employment Opportunities

6. Noise

7. SFN Community Growth

8. SFN Community Justice and Safety

9. SFN Community Wellness

10. SFN Community Economic Vitality

11. SFN Member Economic Vitality

12. SFN Political Structure and Leadership

13. Traditional Use Activity

14. Wilderness

If you have concerns, are they based on: your own experience, other studies, or information passed on to you from someone else?

1. Business Opportunities

2. Dust

3. Education and Training

4. Employment Income

5. Employment Opportunities

6. Noise

7. SFN Community Growth

8. SFN Community Justice and Safety

9. SFN Community Wellness

10. SFN Community Economic Vitality

11. SFN Member Economic Vitality

12. SFN Political Structure and Leadership

13. Traditional Use Activity

14. Wilderness

Questions





Questions / Comments



Teri-Lee Isaac,
*SFN - Minto Socio-Economic Study Community
Researcher*
Phone: 867.537.3043
Email: yukonme30@hotmail.com

Jennie Gjertsen,
Minto Ex Environmental Coordinator
Phone: 604.759.0860 (ext. 462),
Toll Free Phone: 866.684.8894
Email: jennieg@mintomine.com
Website: www.capstonemining.com



Debra Lamash,
Socio-Economic Study Project Manager
Phone: 604.669.3800, Fax: 604.669.3835
Email: dlamash@klohn.com
Website: www.klohn.com



Deanna Yim,
Socio-Environmental Study Researcher
Phone: 250.669.3800
Email: dyim@klohn.com

Minto Mine Phase 5 / Phase 6

Socio-Economic Study Overview

Name: _____

August 14, 2012

ALASKA (USA)



WHITEHORSE



NORTHWEST TERRITORIES

BRITISH COLUMBIA

What is a Socio-Economic Study?

A socio-economic study looks at the effects that a project or activity can have on people and communities.



What is Phase 5 / Phase 6?

When we met in the spring, we were discussing the socio-economic study related to the proposed Phase 5 expansion at the Minto Mine.

Since that time, planning has advanced and the proposed expansion now includes Phase 5 and Phase 6. The name of this study has been adjusted to reflect this development and is now known as the '***Minto Mine Phase 5 / Phase 6 Socio-Economic Study***'. The major changes are related to the underground part of the project.



Yukon River

Minto North
Phase 5
Proposed Open Pit

**Area 2 Extension
(Stages 3 and 4)**
Phase 5
Proposed Open Pit

Ridgetop
Phase 5
Proposed Open Pit

Mill

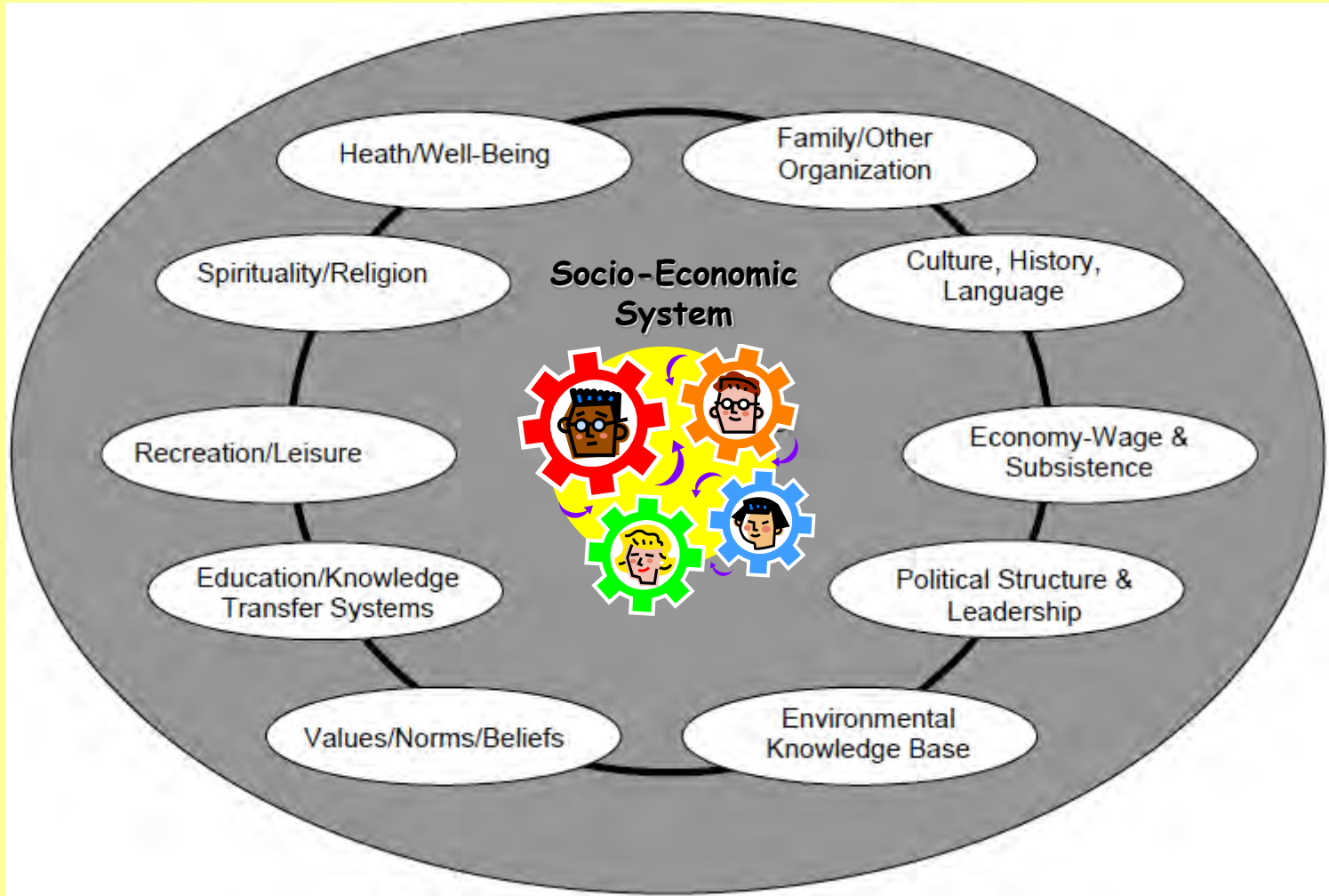
Minto Main
Current
Open Pit

Area 2/118
Phase 4
Current Open Pit
and Future Underground

Airstrip

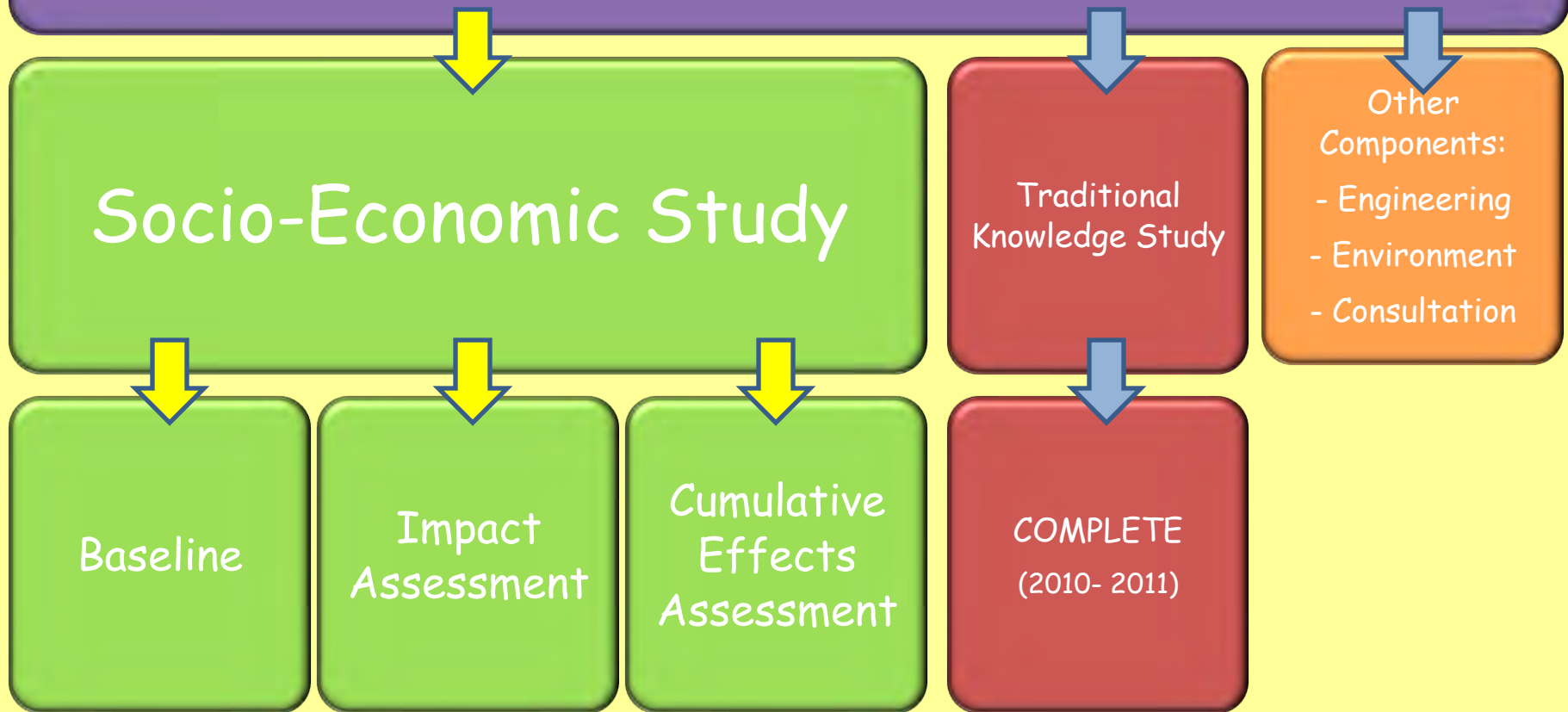
Phase 5 will also add additional underground stopes underneath the proposed pits

Socio-Economic System



YESAB. 2006. Guide to Socio-Economic Effects Assessments. Available at: <http://www.yesab.ca/publications/documents/SEEAfinal200606.pdf>

Minto YESAB Application



Goals of the Phase 5 / Phase 6 Socio-Economic Study

Baseline

- a) To learn about and document current SFN economy, health, culture, traditions, lifestyles, heritage resources, and any other items important to the SFN;

Impact
Assessment

- b) To assess how the proposed Minto Mine expansion may affect the items identified above; and,

Cumulative
Effects
Assessment

- c) To assess how the proposed Minto Mine expansion may contribute to cumulative effects.

What is a Socio-Economic Baseline?

- Describes the current social and economic conditions in areas that could be affected by the project.
- Provides a 'benchmark' that future socio-economic studies can be compared against.
- Considers a wide range of values.
- Focuses on items important to people and communities, these are called 'Valued Socio-Economic Components' or VSCs.



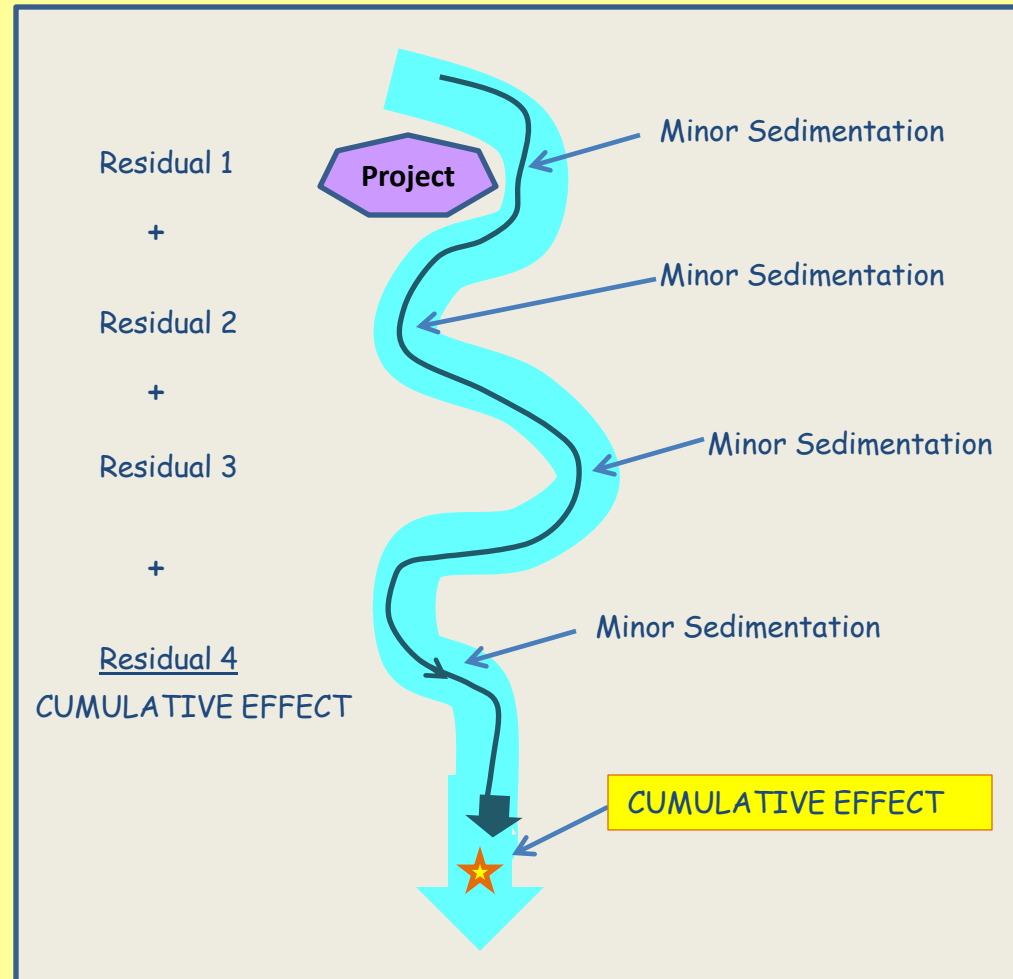
What is a Socio-Economic Impact Assessment?

- Considers how a project affects:
 - people;
 - their communities; and
 - the land they live on.
- We will work with you to assess the potential **social & economic** effects of the proposed Minto Mine expansion on the SFN people and community.



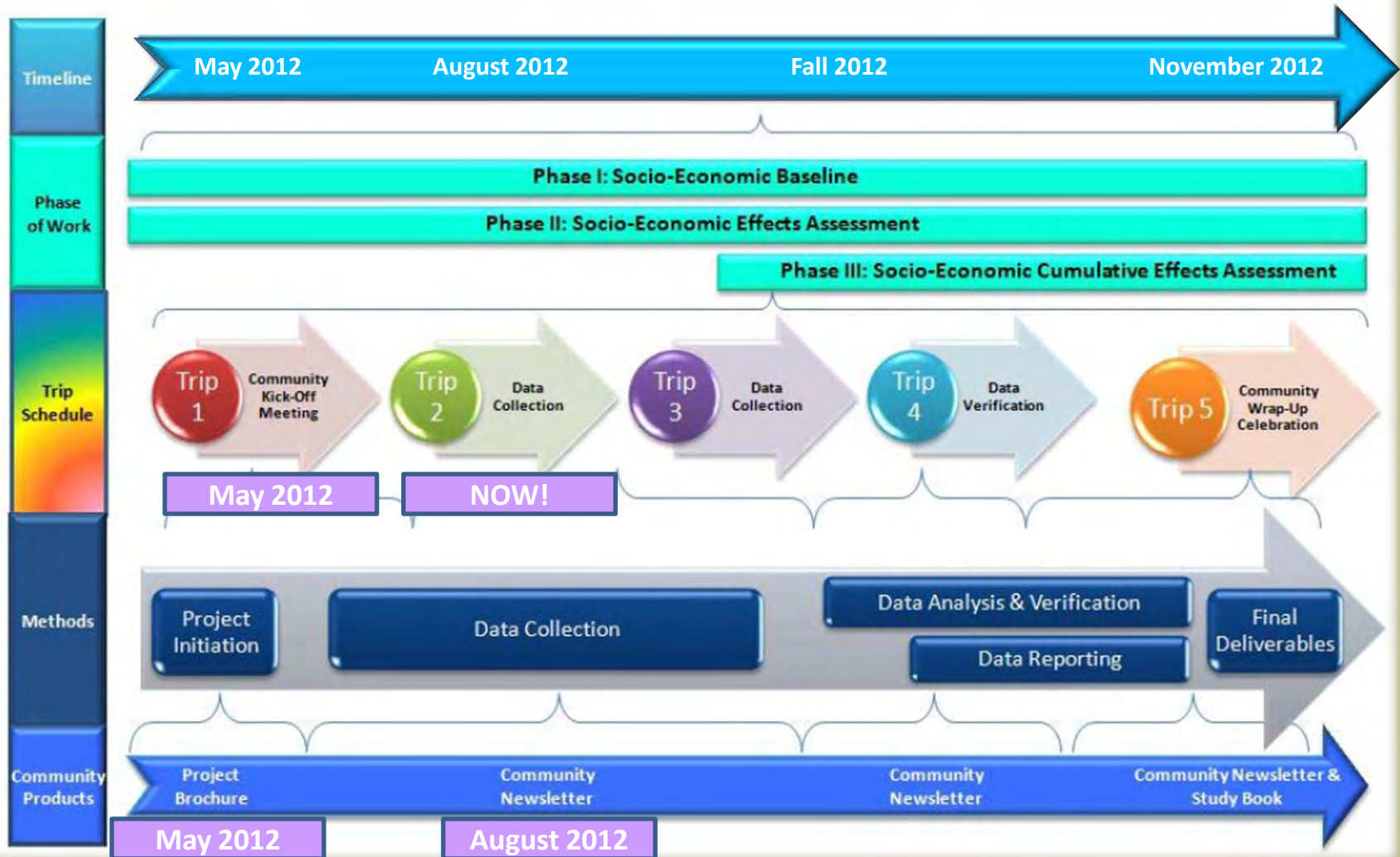
What is a Cumulative Effects Assessment?

- Considers how the residual effects of the project, in combination with the residual effects of other projects, affect people, communities and the land.
- Residual effects are the effects that remain after attempts have been made to reduce or eliminate project effects.
- We assess cumulative effects because when residual effects are considered together they can have a greater impact than when each is considered separately.



Source: YESAB, 2005. Assessment of Cumulative Effects

What Stage Are We At Now?



Trip
1

Community
Kick-Off
Meeting

Community Meeting:

May 31, 2012

- Meeting Summary:

- The Community Meeting was held in the Link Building.
- The presentation was given twice. Once at 1 pm and again at 5 pm to increase the opportunity for community members to attend.
- A community dinner was provided before the 5 pm presentation.
- Approximately 30 community members in total, attended this meeting.



Trip
1

Community
Kick-Off
Meeting

Community Meeting:

May 31, 2012

- Working Together to Shape this Study:**

Valuable feedback and comments were shared with the Minto Socio-Economic Study Research team at the last community meeting:



What We Heard From the Community

How We Responded

Valuable information about the preliminary list of Phase 5 / Phase 6 VSCs was shared through posters and feedback forms.

We have documented this information, considered it, and will continue to build on it as the study develops.

A suggestion was made at the last community meeting to hold another community meeting about this Study.

This meeting was organized.

A suggestion was made to invite SFN family representatives to participate in the Study, to help ensure equal representation from the community.

SFN family representatives were sent individual letters of invitation to participate in this data gathering trip.



Trip 2

Data Collection

Data Collection

Socio-economic data will be gathered by conducting interviews with individuals and representatives from organizations and groups, which may include (but not limited to):

- the SFN community;
- the SFN Administration and Departments;
- SFN community service agencies (e.g., RCMP, Health Center, Schools, etc.); and
- SFN and Pelly Crossing businesses.

Information will also be collected by doing research and literature reviews to access information like statistics.

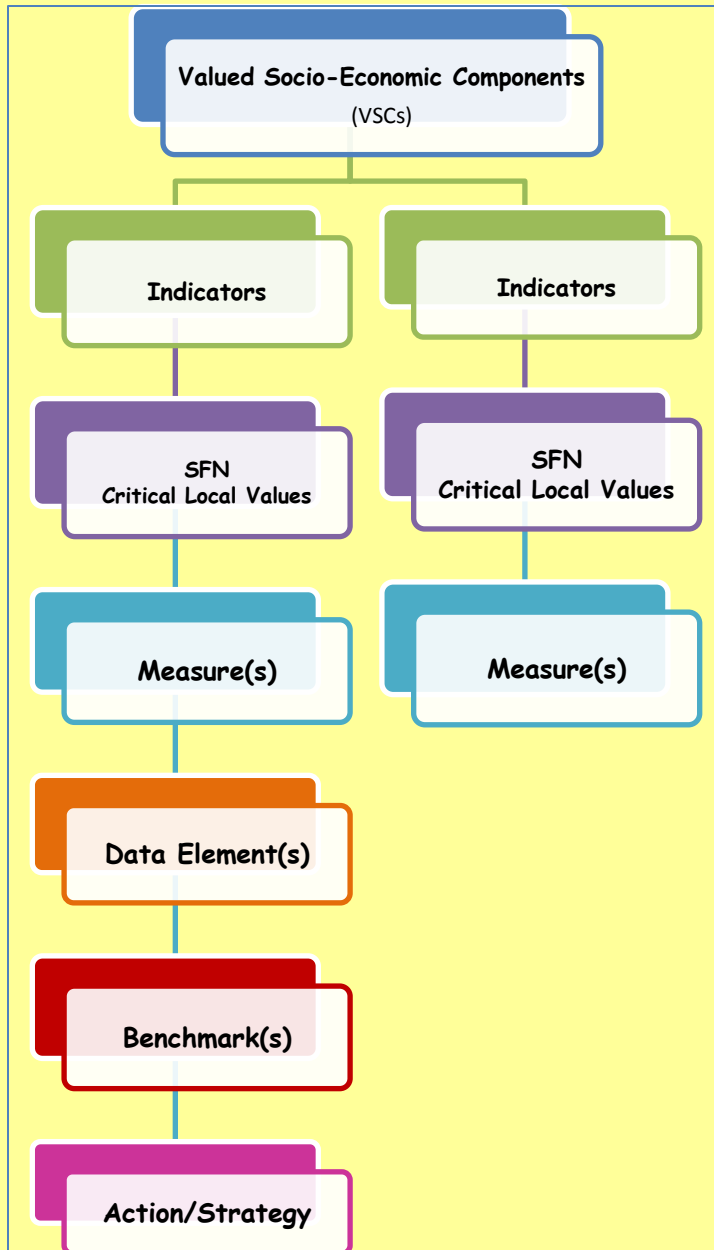
Data Analysis

We will analyze the data using a local-level 'Criteria and Indicator' (C&I) Framework which is a tool that can be used to document, assess and monitor VSCs.

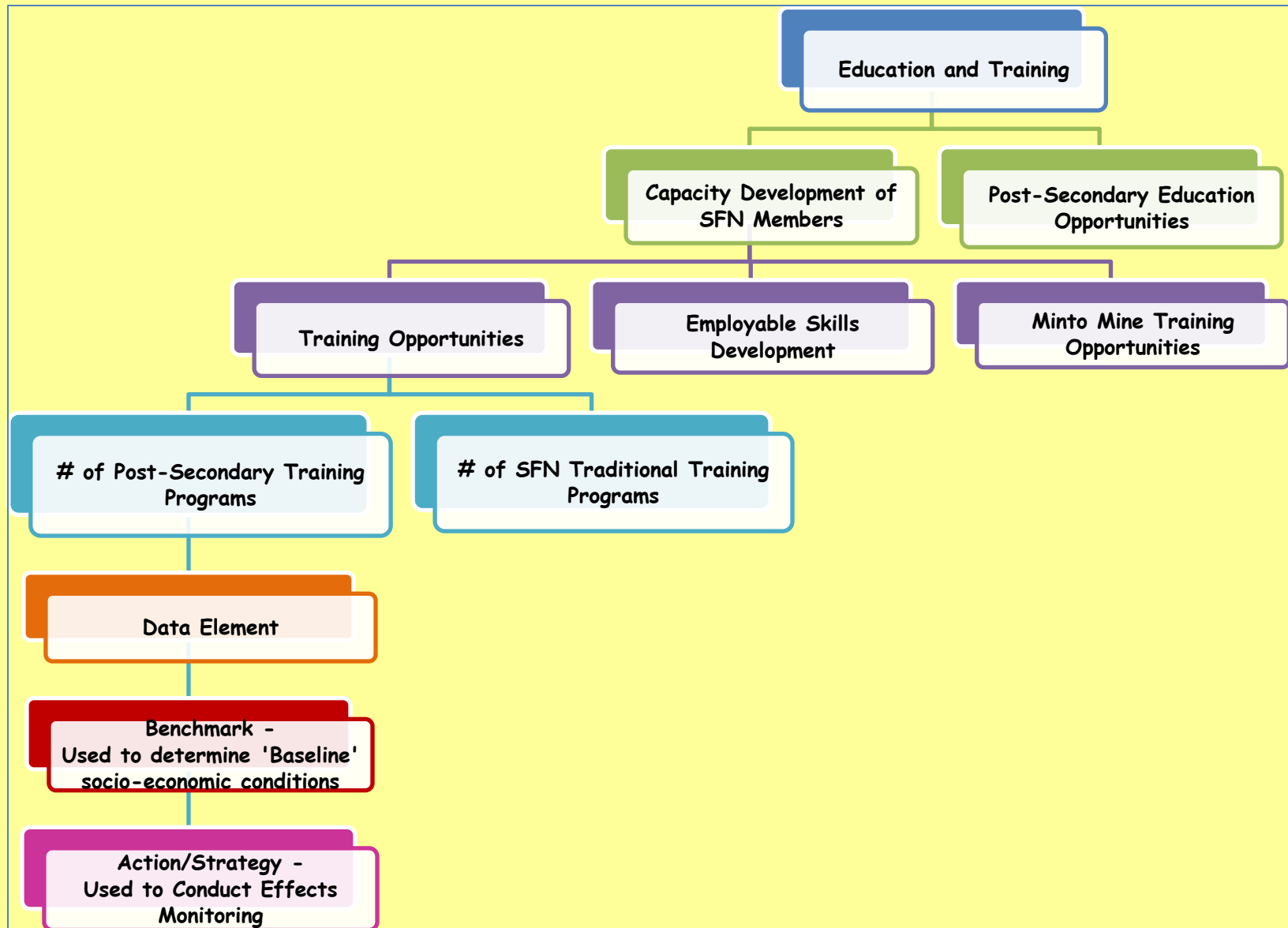
C&I frameworks are commonly used to develop and identify social, economic and ecological sustainability.

We will use the framework to try and make the proposed project better for people, the community, and Minto Ex.

We will share what we learn with you and include it in the Minto Ex Phase 5 / Phase 6 YESAB Application.



An Example



List of Preliminary Minto Mine Phase 5 / Phase 6 VSCs

1. Business Opportunities

2. Dust

3. Education and Training

4. Employment Income

5. Employment Opportunities

6. Noise

7. SFN Community Growth

8. SFN Community Justice and Safety

9. SFN Community Wellness

10. SFN Community Economic Vitality

11. SFN Member Economic Vitality

12. SFN Political Structure and Leadership

13. Traditional Use Activity

14. Wilderness



What do YOU value?

1. Business Opportunities
2. Dust
3. Education and Training
4. Employment Income
5. Employment Opportunities
6. Noise
7. SFN Community Growth
8. SFN Community Justice and Safety
9. SFN Community Wellness
10. SFN Community Economic Vitality
11. SFN Member Economic Vitality
12. SFN Political Structure and Leadership
13. Traditional Use Activity
14. Wilderness

How might these values be affected by the proposed Minto Mine Expansion, and why?

1. Business Opportunities

2. Dust

3. Education and Training

4. Employment Income

5. Employment Opportunities

6. Noise

7. SFN Community Growth

8. SFN Community Justice and Safety

9. SFN Community Wellness

10. SFN Community Economic Vitality

11. SFN Member Economic Vitality

12. SFN Political Structure and Leadership

13. Traditional Use Activity

14. Wilderness



How can potential positive effects be improved and potential negative effects be reduced or eliminated?

1. Business Opportunities

2. Dust

3. Education and Training

4. Employment Income

5. Employment Opportunities

6. Noise

7. SFN Community Growth

8. SFN Community Justice and Safety

9. SFN Community Wellness

10. SFN Community Economic Vitality

11. SFN Member Economic Vitality

12. SFN Political Structure and Leadership

13. Traditional Use Activity

14. Wilderness



If you have concerns, are they based on: your own experience, other studies, or information passed on to you from someone else?

1. Business Opportunities

2. Dust

3. Education and Training

4. Employment Income

5. Employment Opportunities

6. Noise

7. SFN Community Growth

8. SFN Community Justice and Safety

9. SFN Community Wellness

10. SFN Community Economic Vitality

11. SFN Member Economic Vitality

12. SFN Political Structure and Leadership

13. Traditional Use Activity

14. Wilderness





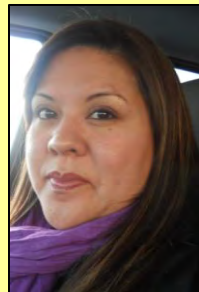
Questions / Comments



Jennie Gjertsen,
Minto Ex Environmental Manager
Phone: 604.759.0860 (ext. 462),
Toll Free Phone: 866.684.8894
Email: jennieg@mintomine.com
Website: www.capstonemining.com



Debra Lamash,
Socio-Economic Study Project Manager
Phone: 604.669.3800, Fax: 604.669.3835
Email: dlamash@klohn.com
Website: www.klohn.com



Teri-Lee Isaac,
*SFN - Minto Socio-Economic Study Community
Researcher*
Phone: 867.537.3043
Email: yukonme30@hotmail.com



Deanna Yim,
Socio-Environmental Study Researcher
Phone: 250.669.3800
Email: dyim@klohn.com

Minto Mine Phase 5/6

Socio-Economic Study Update

Name: _____

October 16, 2012

ALASKA (USA)



WHITEHORSE



NORTHWEST TERRITORIES