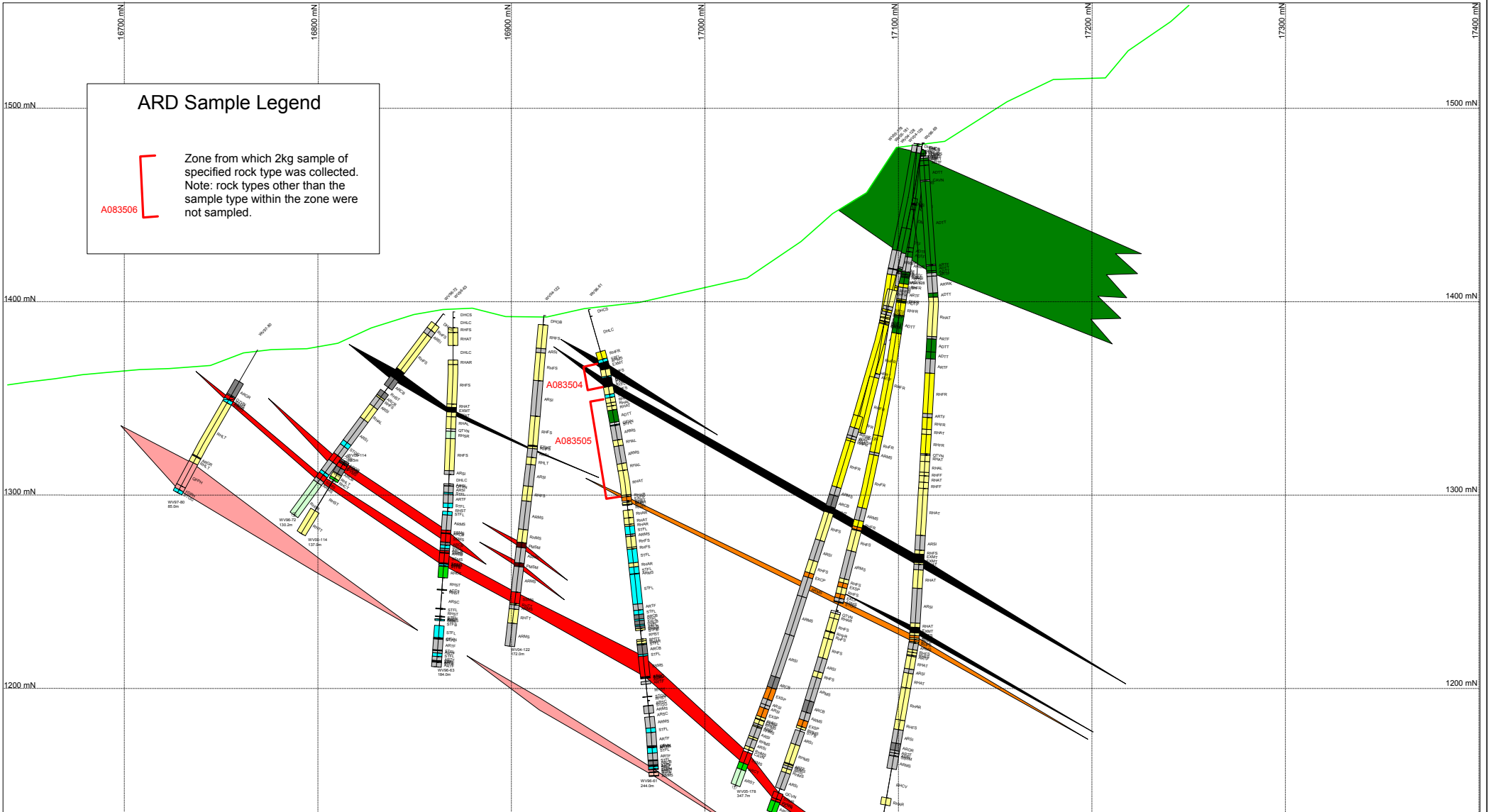


ARD Sample Legend

[Zone from which 2kg sample of specified rock type was collected.
 Note: rock types other than the sample type within the zone were not sampled.

A083506



Wolverine Deposit Legend

RHFS Siliceous Rhyolite	EXCP Calcite Pyrite Exhalite (alteration)	ADMS Undifferentiated Andesite
RHMS Massive Rhyolite	EXSP Silica Pyrite Exhalite (alteration)	ADTF Andesite Tuff
RHFR Fragmental Rhyolite	EXMT Magnesite Exhalite (alteration)	ADFF Andesite Ash Tuff
RHAT Argillaceous Lapilli Tuff	EXMP Magnesite Pyrite Exhalite (alteration)	ADTF Andesite Lapilli Tuff
RHLT Rhyolite Lapilli Tuff	SSMS Massive Sulfide	ARMS Massive Argillite
RHFA Rhyolite Ash Tuff	PYMS Pyrite-Rich Massive Sulfide	ARSH Carbonaceous Argillite
RHAL Banded Lapilli-Ash Tuff	SPMS Sphalerite-Rich Massive Sulfide	ARSG Interbedded Rhyolite and Argillite
RHTT Rhyolite Tuff	CPMS Chalcopyrite-Rich Massive Sulfide	ARGR Graphic Argillite
RHCT Chlorite Altered Rhyolite Tuff	CSMS Chalcopyrite, Sphalerite-Rich Massive Sulfide	ARSI Siliceous Argillite
RHRK Sericite Altered Rhyolite Lapilli Tuff	PMMS Plymetalic Massive Sulfide	ARPT Tufaceous Argillite
RHCL Chlorite Altered Rhyolite Lapilli Tuff	PVMS Pyrite-Rich Semi-Massive Sulfide	ARQE Black Quartz-Eye Bearing Argillite
RPAT Argillaceous Quartz-Eye Feldspar Crystal Tuff	CPSM Chalcopyrite-Rich Semi-Massive Sulfide	RHAR Interbedded Rhyolite and Argillite
RPQL Quartz-Eye Rhyolite Lapilli Tuff	CSMS Chalcopyrite, Sphalerite-Rich Semi-Massive Sulfide	ARRH Interbedded Rhyolite and Argillite
RPTE Quartz-Eye Feldspar Crystal Tuff	PMSM Polymetallic Semi-Massive Sulfide	ARWK Interbedded Black Argillite/Greywacke
FDPA Feldspar Porphyry	QTVN Quartz Vein	STFL Structure - Fault
QFPA Quartz-Feldspar Porphyry	CAVN Calcite Vein	STGG Structure - Fault Gouge

Yukon Zinc Corporation

Wolverine Deposit
 Drill Profiles
 Section 16350E

Date: 19/10/2006
 Author: Desirous
 Office: Vancouver
 Drawing: L_16350E
 Scale: 1:1000
 Projection: UTM NAD 27 Zone 9

