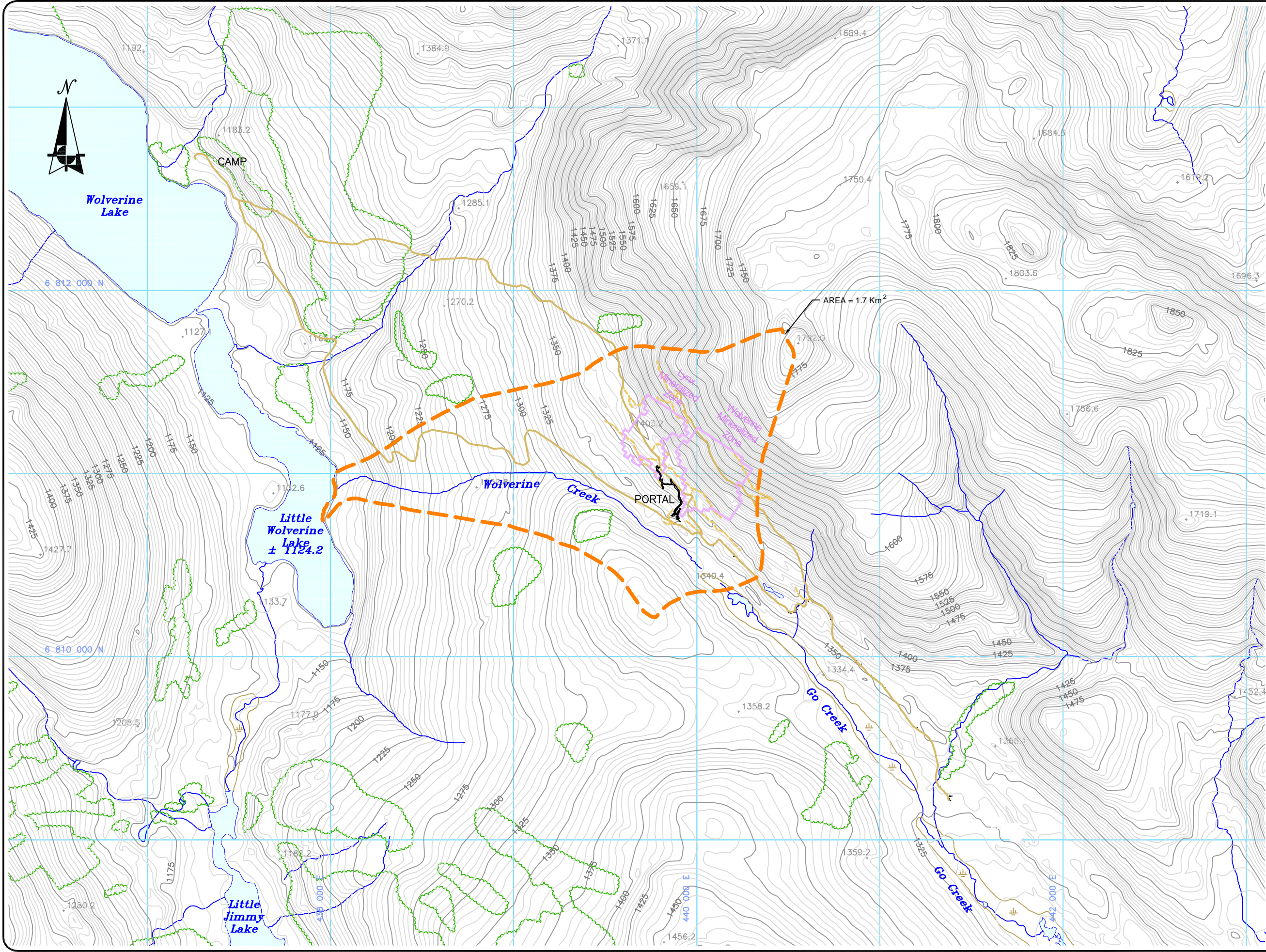


Path: C:\GLL-Yukon Zinc\Rush Edits\ Plotted on: Feb 15, 2006-12:30pm Edited by: Charone Concepts Ltd



LEGEND:

- GROUND SURFACE CONTOUR (M ASL) - 5m INTERVAL
- DRAINAGE
- ROAD - MAIN
- ROAD - DRILL ACCESS
- TREES
- MINERALIZED ZONE
- MINE GROUNDWATER LOCAL STUDY AREA (WOLVERINE CREEK WATERSHED)
- TEST MINE UNDERGROUND WORKINGS

- Data Sources:**
1. Proposed Roads, contour and drainage data provided by Expatriate Resources on September 22, 2004
 2. Claims and mineralized zones from drawings provided by Yukon Zinc Corporation
 3. Wolverine Creek watershed boundary provided by Madrone Environmental Services Ltd.
 4. Underground workings provided by Yukon Zinc Corporation on Jan 27, 2006

REVIEWED BY : DJ/RF/RM
 PREPARED BY : PW/CCL
 DATE ISSUED : JANUARY, 2006
 PROJECT NO. : 50-288
 FILE NAME : 50288_B6_06aJan31_04r3.dwg
 REVISION : 3



Wolverine Project

**Figure 6.4-1
MINE GROUNDWATER
STUDY AREA**

Date: JANUARY, 2006
 Projection: UTM Zone 9, NAD 27
 File Name: 50288_B6_06aJan31_04r3.dwg

0 100 200 400 600 800m
 Scale 1:20,000