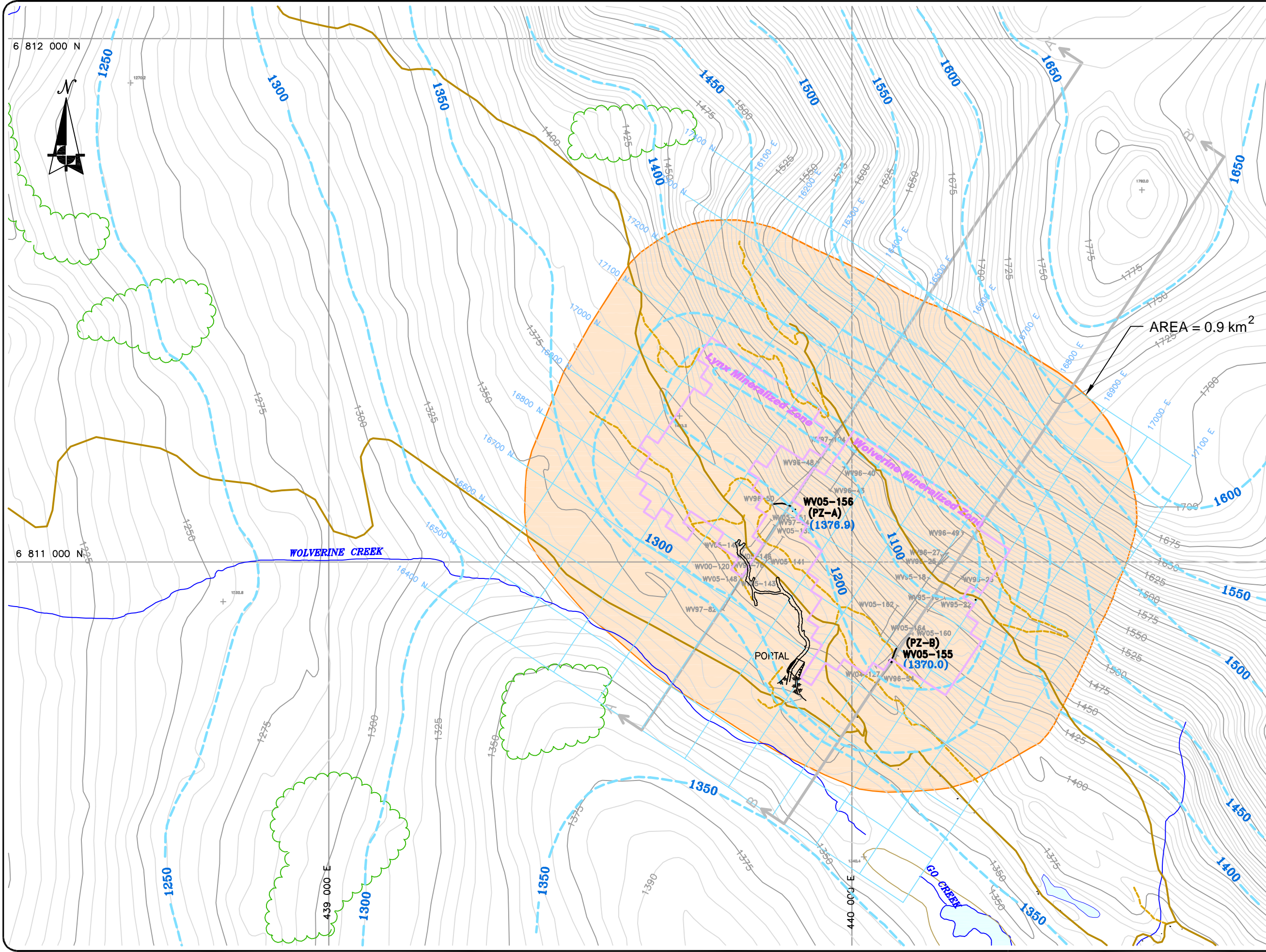


Path: C:\GILL-Yukon Zinc\Rush Edits\ Plotted on: Feb 15, 2006-12:29pm Edited by: Charone Concepts Ltd



LEGEND:

- GROUND SURFACE CONTOUR (M ASL) - 5m INTERVAL
- DRAINAGE
- ROAD - MAIN
- ROAD - DRILL ACCESS
- APPROXIMATE INFERRED GROUNDWATER QUIPOTENTIAL LINE (M ASL)
- MINERALIZED ZONE
- TEST MINE UNDERGROUND WORKINGS
- AREA OF POTENTIAL GROUNDWATER DEPRESSION
- CROSS SECTION LINES
- PIEZOMETER INSTALLED BY GARTNER LEE IN APRIL 2005 (PROJECTED TO SURFACE)
- WV05-155**
(1370.0) GROUNDWATER ELEVATION MEASURED ON JULY 1, 2005 (M ASL)
- ON-SECTION DIAMOND DRILL HOLE (PROJECTED TO SURFACE)
- WV97-100

NOTE:
GROUNDWATER CONTOURS AS A RESULT OF MINE DEWATERING ARE INFERRED FROM LIMITED DATA AND ANALYTICAL EQUATIONS

- Data Sources:**
1. Proposed Roads, contour and drainage data provided by Expatriate Resources on September 22, 2004
 2. Claims and mineralized zones from drawings provided by Yukon Zinc Corporation
 3. Wolverine Creek watershed boundary provided by Madrone Environmental Services Ltd.
 4. Underground workings provided by Yukon Zinc Corporation on Jan 27, 2006

REVIEWED BY : DJ/RF/RM
 PREPARED BY : PW/CCL
 DATE ISSUED : JANUARY, 2006
 PROJECT NO. : 50-288
 FILE NAME : 50288_B6_06aJan31_07r3.dwg
 REVISION : 3



Wolverine Project

**Figure 6.4-12
 POTENTIAL GROUNDWATER
 DEPRESSION PLAN**

Date: JANUARY, 2006
 Projection: UTM Zone 9, NAD 27 File Name: 50288_B6_06aJan31_07r3.dwg

0 50 100 200 300m
 Scale 1:7,000