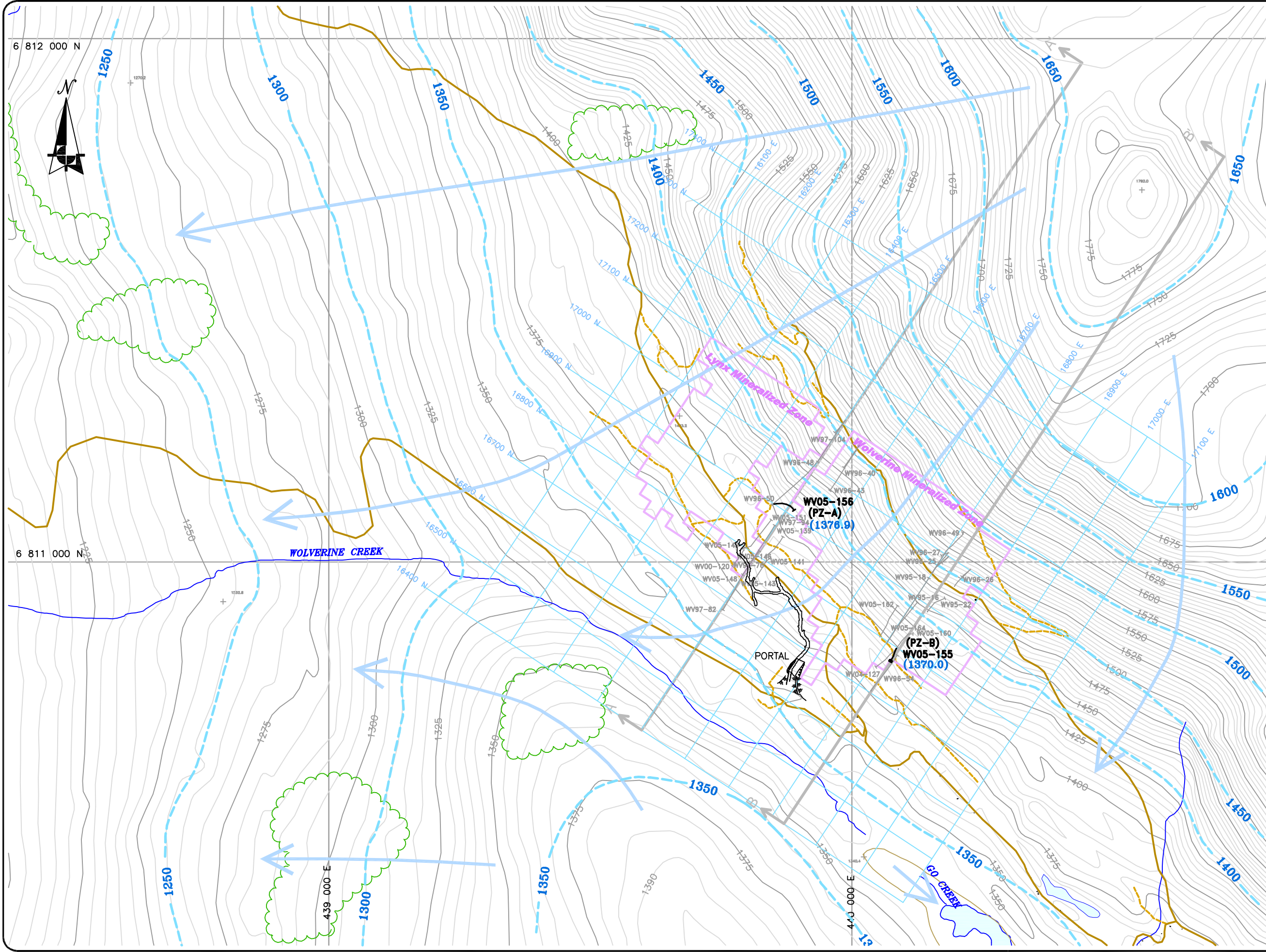


Path: C:\GLL-Yukon Zinc\Rush Edits\ Plotted on: Feb 15, 2006-12:27pm Edited by: Charone Concepts Ltd



LEGEND:

- GROUND SURFACE CONTOUR (M ASL) - 5m INTERVAL
- DRAINAGE
- ROAD - MAIN
- ROAD - DRILL ACCESS
- INFERRED GROUNDWATER EQUIPOTENTIAL LINE (M ASL)
- MINERALIZED ZONE
- TEST MINE UNDERGROUND WORKINGS
- INFERRED GROUNDWATER FLOW DIRECTION (JULY 1, 2005)
- CROSS SECTION LINES
- PIEZOMETER INSTALLED BY GARTNER LEE IN APRIL 2005 (PROJECTED TO SURFACE)
- WV05-155**
(1370.0) GROUNDWATER ELEVATION MEASURED ON JULY 1, 2005 (M ASL)
- ON-SECTION DIAMOND DRILL HOLE (PROJECTED TO SURFACE)
- WV97-100**

- Data Sources:**
- Proposed Roads, contour and drainage data provided by Expatriate Resources on September 22, 2004
 - Claims and mineralized zones from drawings provided by Yukon Zinc Corporation
 - Wolverine Creek watershed boundary provided by Madrone Environmental Services Ltd.
 - Underground workings provided by Yukon Zinc Corporation on Jan 27, 2006

REVIEWED BY : DJ/RF/RM
 PREPARED BY : PW/CCL
 DATE ISSUED : JANUARY, 2006
 PROJECT NO. : 50-288
 FILE NAME : 50288_B6_06aJan31_01r3.dwg
 REVISION : 3



Wolverine Project

**Figure 6.4-2
 CONCEPTUAL
 HYDROGEOLOGIC MODEL
 PLAN**

Date: JANUARY, 2006

Projection: UTM Zone 9, NAD 27	File Name: 50288_B6_06aJan31_01r3.dwg
--------------------------------	---------------------------------------

0 50 100 200 300m
 Scale 1:7,000