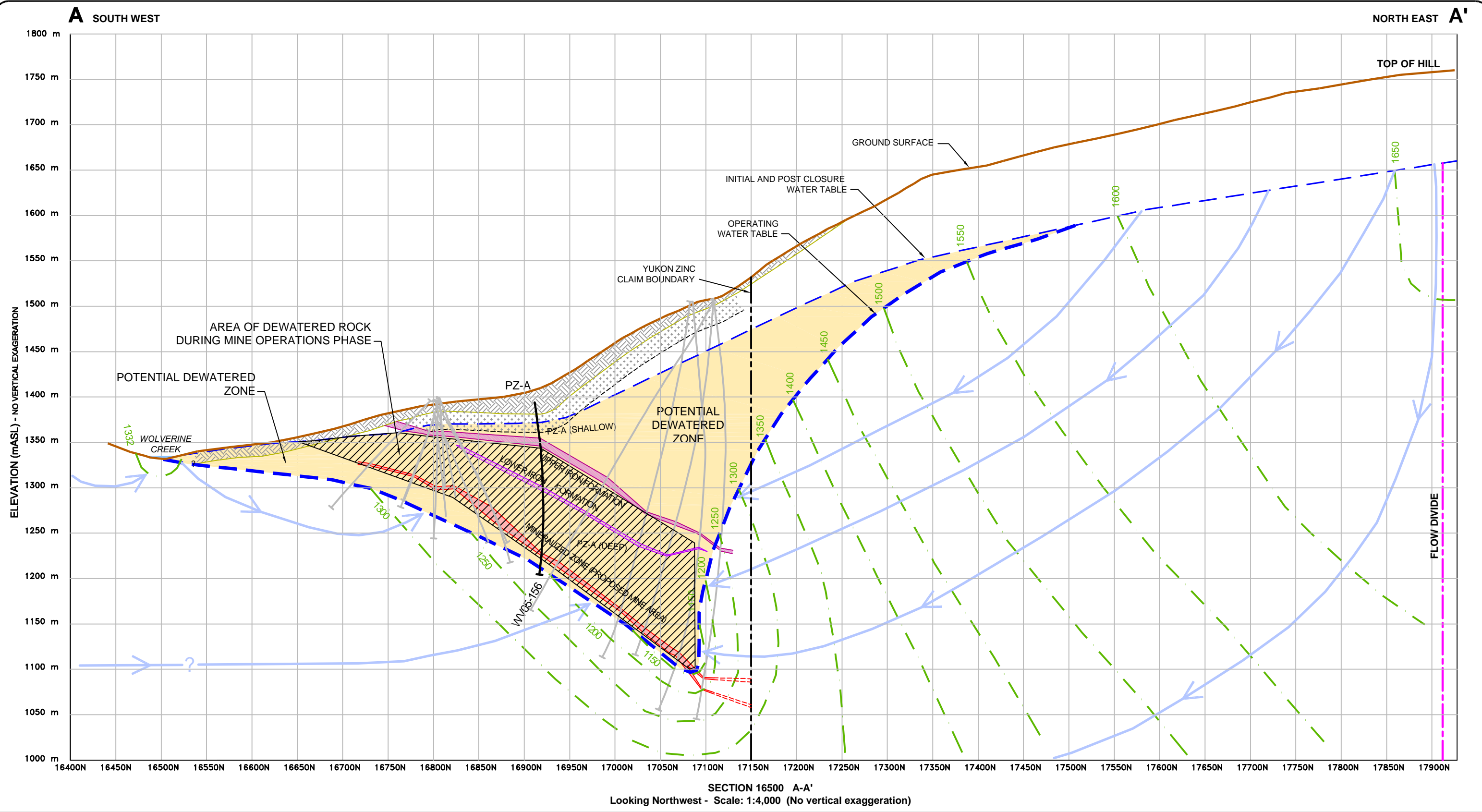


Path: C:\GIL-Yukon Zinc\Rush Edits\ Plotted on: Feb 15, 2006-12:30pm Edited by: Charone Concepts Ltd



SECTION 16500 A-A'
Looking Northwest - Scale: 1:4,000 (No vertical exaggeration)

LEGEND:	
	OVERBURDEN
	SHALLOW WEATHERED BEDROCK
	UPPER IRON FORMATION
	LOWER IRON FORMATION
	MINERALIZED ZONE
	GROUND WATER FLOW DIVIDE
	INFERRED GROUNDWATER EQUIPOTENTIAL LINE
	INFERRED GROUNDWATER FLOW DIRECTION
	INFERRED WATER TABLE DURING MINE OPERATION
	WATER TABLE - SUMMER 2005
	PZ-A PIEZOMETER INSTALLED BY GARTNER LEE IN APRIL 2005
	K = HYDRAULIC CONDUCTIVITY (cm/s)
	EXPLORATION DIAMOND DRILL HOLE DRILLED BY OTHERS

PZ-A PIEZOMETER INSTALLED BY GARTNER LEE IN APRIL 2005
POINT OF GROUNDWATER ELEVATION MEASUREMENT

K = HYDRAULIC CONDUCTIVITY (cm/s)

EXPLORATION DIAMOND DRILL HOLE DRILLED BY OTHERS

REVIEWED BY: DJ/RF/RM
PREPARED BY: PW/CCL
DATE ISSUED: JANUARY, 2006
PROJECT NUMBER: 50-288
FILE NAME: 50288_B6_06aJan31_06r3.dwg
REVISION: 3

File Name: 50288_B6_06aJan31_06r3.dwg	Date: JANUARY, 2006
Notes: 1. Hydrostratigraphic layers to be used for interpretation purposes only. Thickness and extent may vary significantly between boreholes. 2. Inferred groundwater equipotential and flow directions based on limited data and analytical equations.	Projection: N/A
Data Sources: Base Cross Sections Provided by Yukon Zinc Corporation	

Yukon Zinc
CORPORATION

Wolverine Project

Figure 6.4-8
CONCEPTUAL HYDROGEOLOGIC MODEL
CROSS SECTION A-A' (Operating)